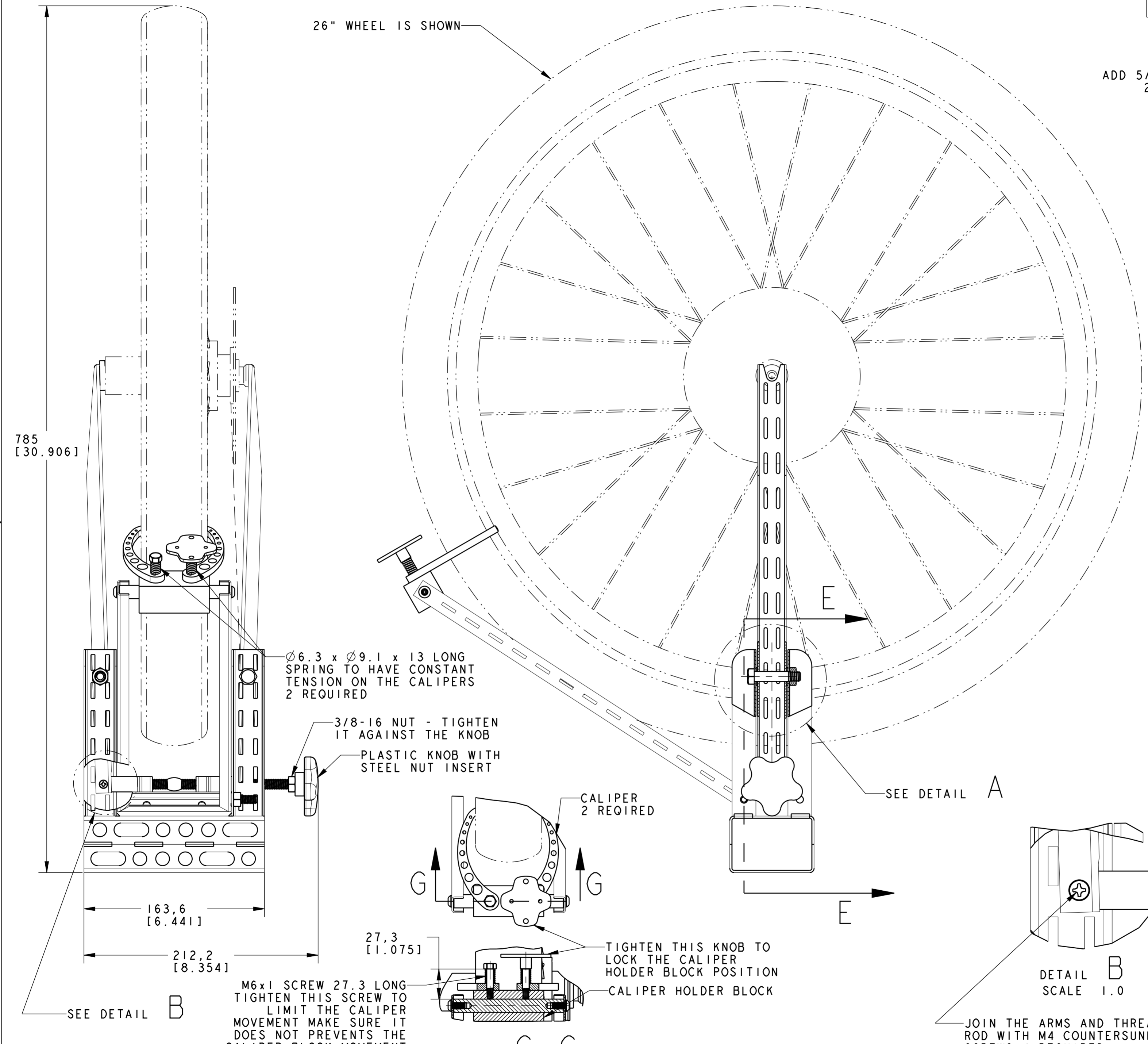
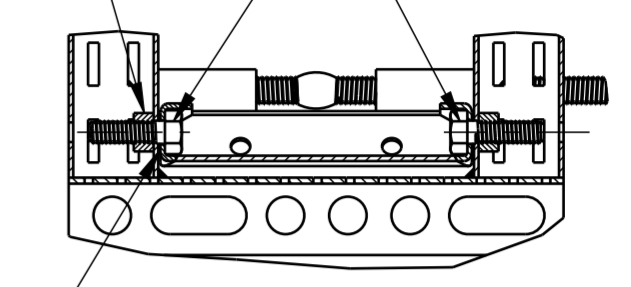


PART NO. **TRUING STAND**



ADD 5/16-18 NUT 2 REQUIRED

ADD 5/16-18 BOLT 2 REQUIRED 25.4 LONG



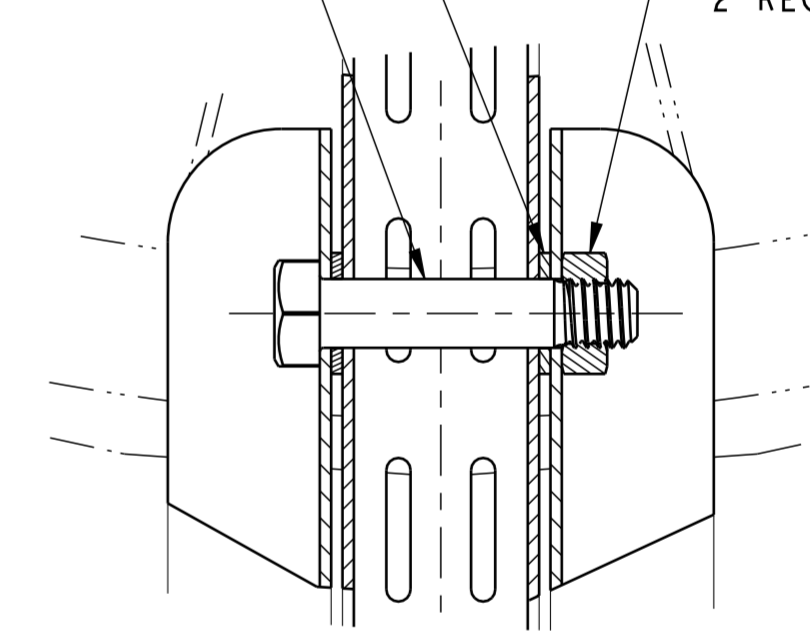
ADD WASHER FOR PROPER SPACING
 $\varnothing 8.0 \times \varnothing 12.0 \times 0.7$ - 2 REQUIRED

SECTION E - E

3/8-16 SHOULDER BOLT 42.0 LONG 2 REQUIRED

1.5 THICK WASHER ADD ONE TO EACH SIDE OF THE ARM 4 REQUIRED

3/8-16 NUT 2 REQUIRED



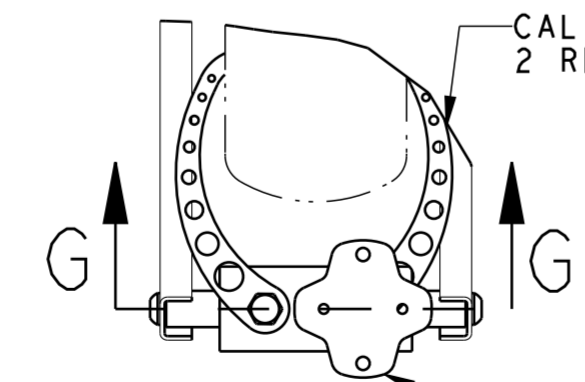
DETAIL A SCALE 1.0

$\varnothing 6.3 \times \varnothing 9.1 \times 13$ LONG SPRING TO HAVE CONSTANT TENSION ON THE CALIPERS 2 REQUIRED

3/8-16 NUT - TIGHTEN IT AGAINST THE KNOB

PLASTIC KNOB WITH STEEL NUT INSERT

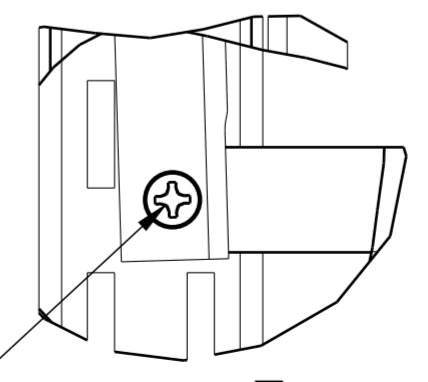
CALIPER 2 REQUIRED



TIGHTEN THIS KNOB TO LOCK THE CALIPER HOLDER BLOCK POSITION

CALIPER HOLDER BLOCK

M6x1 SCREW 27.3 LONG TIGHTEN THIS SCREW TO LIMIT THE CALIPER MOVEMENT MAKE SURE IT DOES NOT PREVENTS THE CALIPER BLOCK MOVEMENT

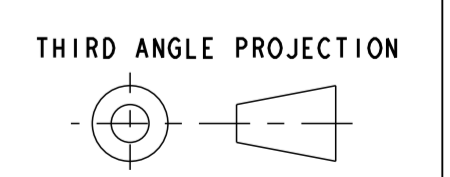
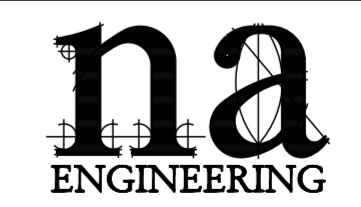


DETAIL B SCALE 1.0

JOIN THE ARMS AND THREADED ROD WITH M4 COUNTERSUNK SCREWS 4 REQUIRED

DIMENSIONS ARE IN MILLIMETERS U.O.S.

FROM 0.5 UP TO 3	OVER 3 UP TO 6	OVER 6 UP TO 30	OVER 30 UP TO 120	OVER 120 UP TO 400	OVER 400 UP TO 2000
±0.1	±0.1	±0.2	±0.3	±0.5	±0.8



DR NAGY A	07FE12	MATERIAL	SCALE
CK NAGY A	07FE12		0.4

TRUING STAND

PART NO. **TRUING STAND** ORG SIZE **A1**