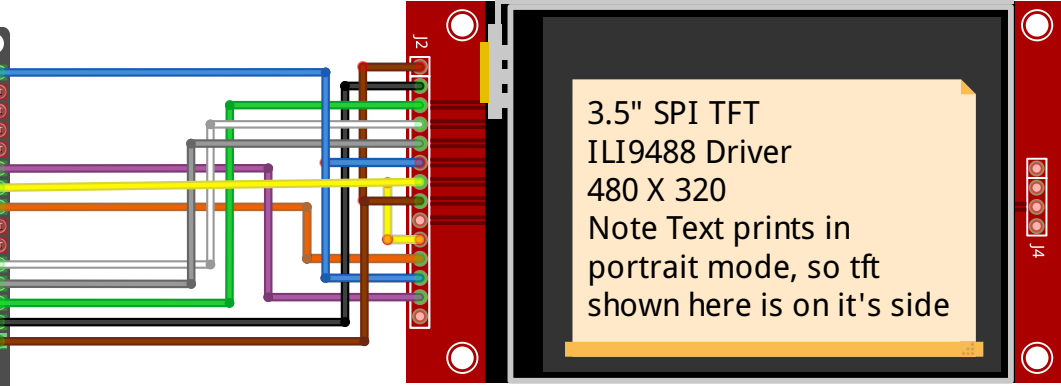
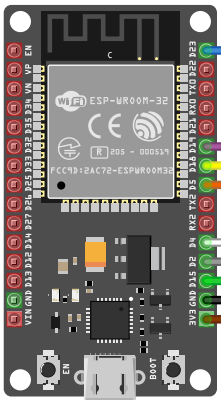


TFT pins in order	ESP32	Wire Colour	
TFT_VDD	3V3	Brown	
TFT_GND	GND	Black	
TFT_CS	15	green	Chip select
TFT_RESET	4	white	Reset pin
TFT_RS	2	Grey	Data Command
TFT_SDA (MOSI)	23	blue	SDA
TFT_SCL	18	yellow	
TFT_BL_EN	3V3	Brown	
TFT_SDO (MISO)		do no connect	
Touch_DCLK	18	yellow	
Touch_CS	5	orange	
Touch_DIN	23	blue	MOSI
Touch_DOUT	19	violet	MISO
Touch_PENIRQ		do not connect	



3.5" SPI TFT
 ILI9488 Driver
 480 X 320
 Note Text prints in
 portrait mode, so tft
 shown here is on it's side

V1.0
 ILI8488 board
 with green esp32 breakout board for
 tft