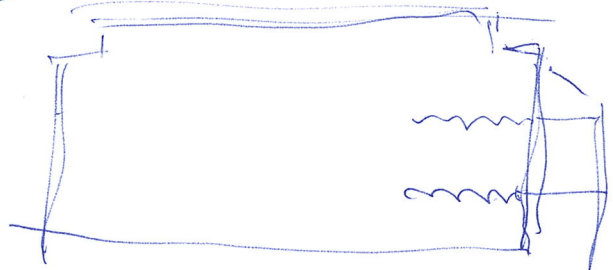
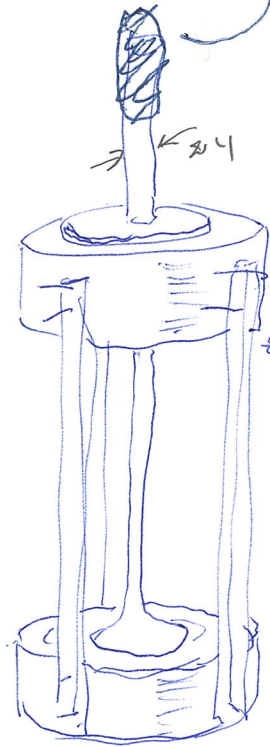


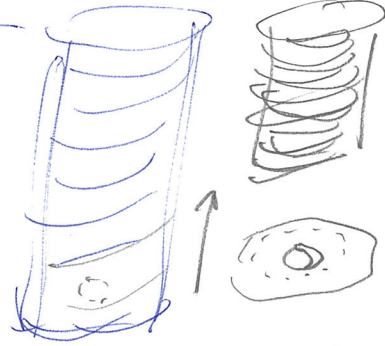
Handtag!?

duck typning
 turnings fast
 rörligt

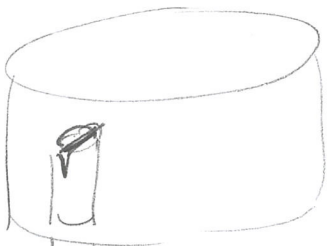


Behöver inte sätts fast!!

Köper stanna var ändå!



skyddsuff



kvastskäft?
 dammsugarrör?

behöver inte för plats helt och hållet!

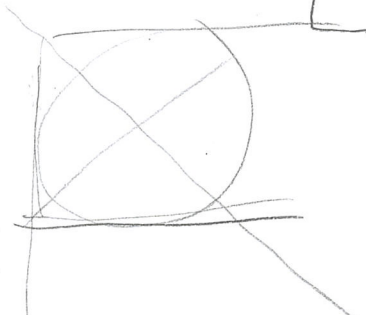
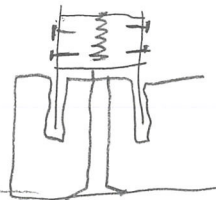
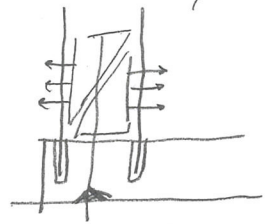


stängklämma?
 sadelklämmor?

rörmonterkit?
 ref?

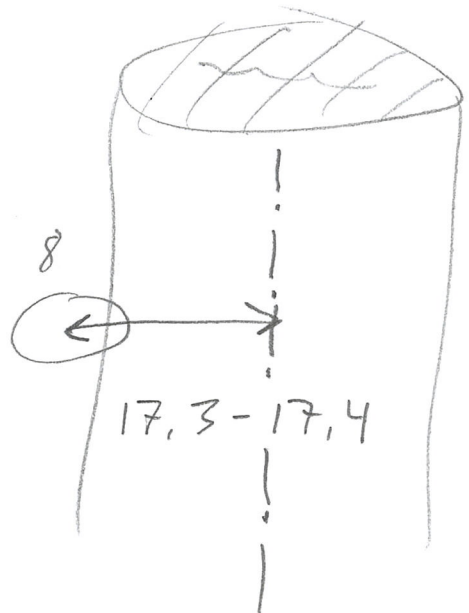
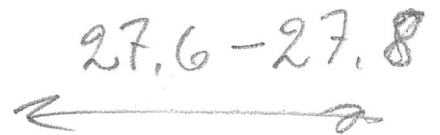
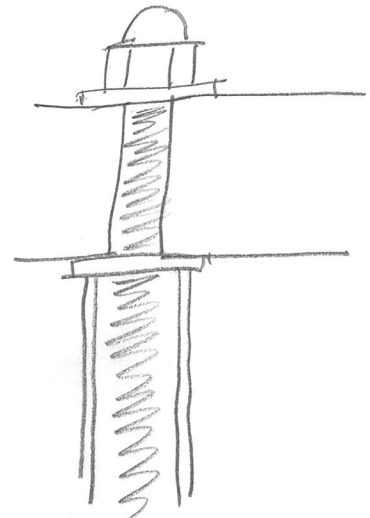
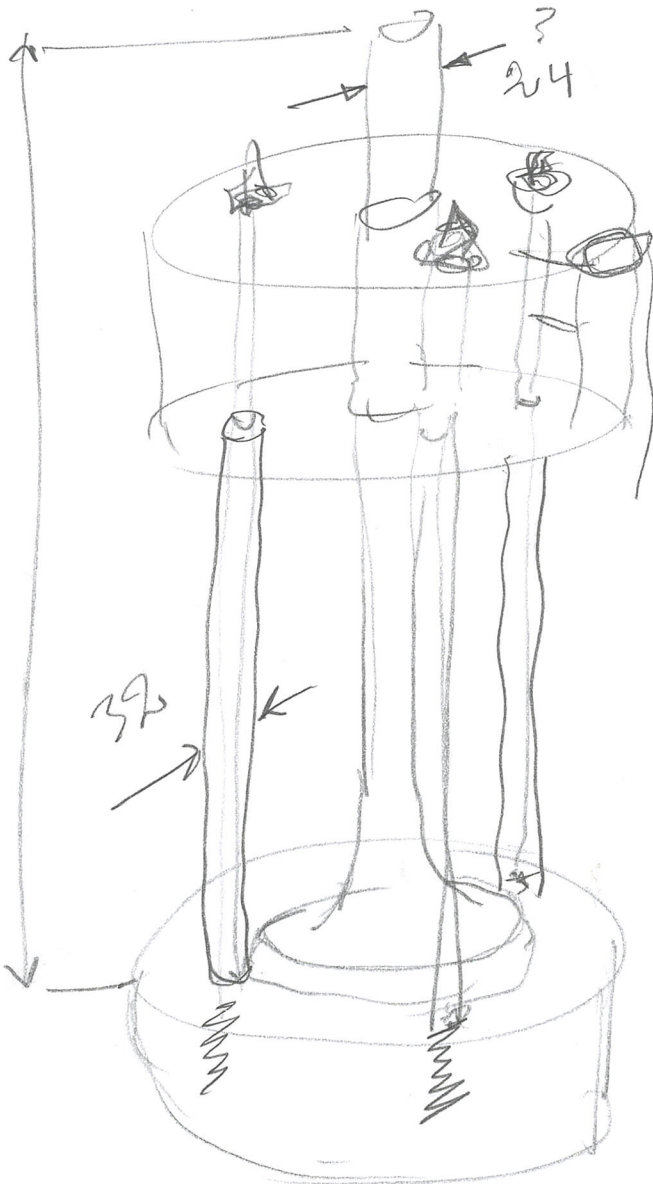
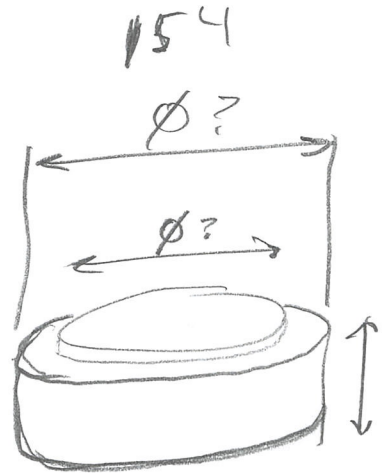


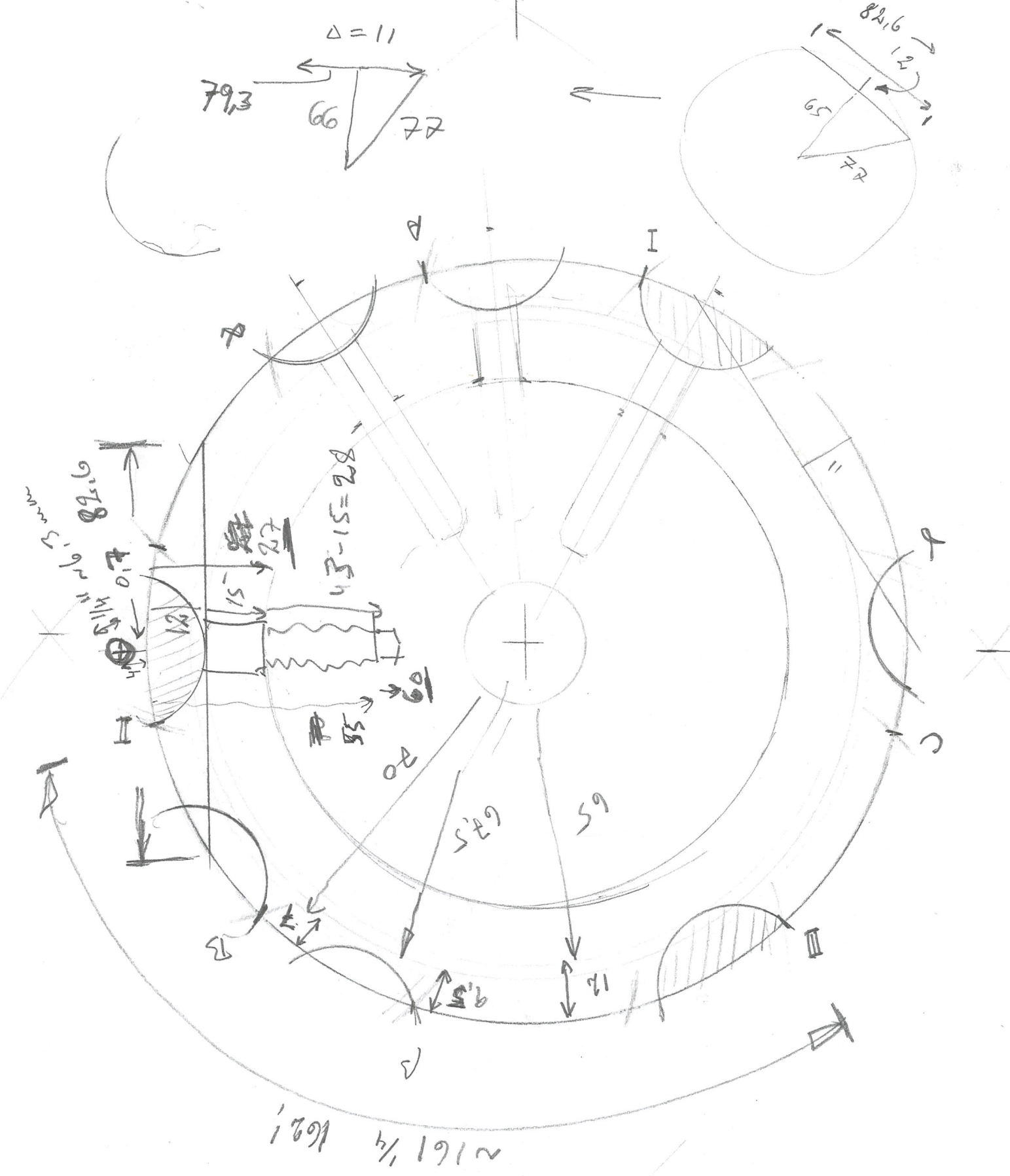
"cykelstyre"





$$\frac{154 - 24}{2} = 65$$



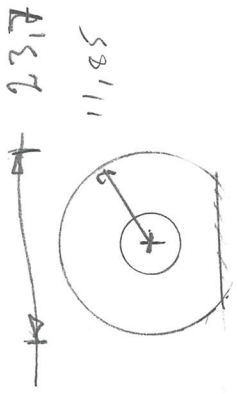


$$\frac{163 \frac{1}{2}}{100 + 60 + 3 \frac{1}{2}} = \frac{3}{490}$$

$$\frac{163 \frac{1}{2}}{100 + 60 + 3 \frac{1}{2}} = \frac{3}{490}$$

$$154 \leftarrow 98h$$

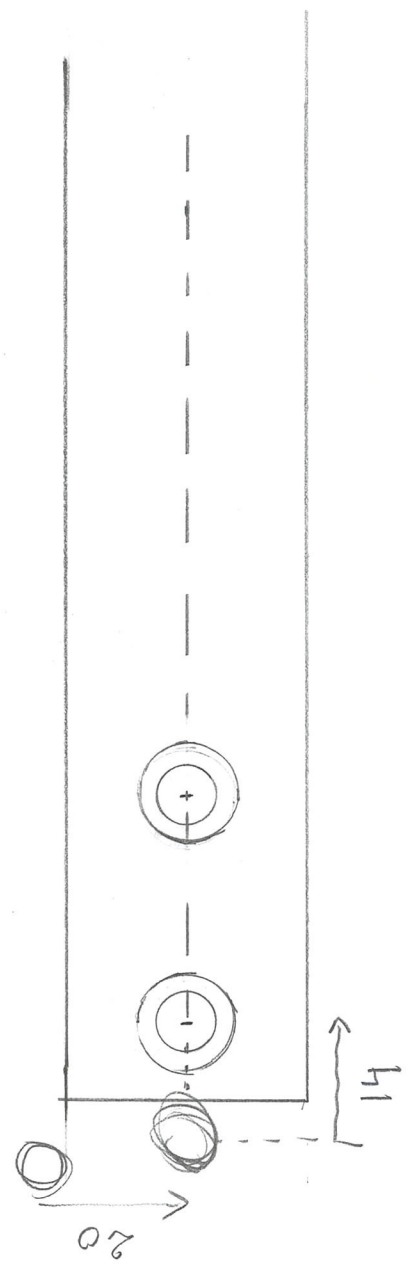
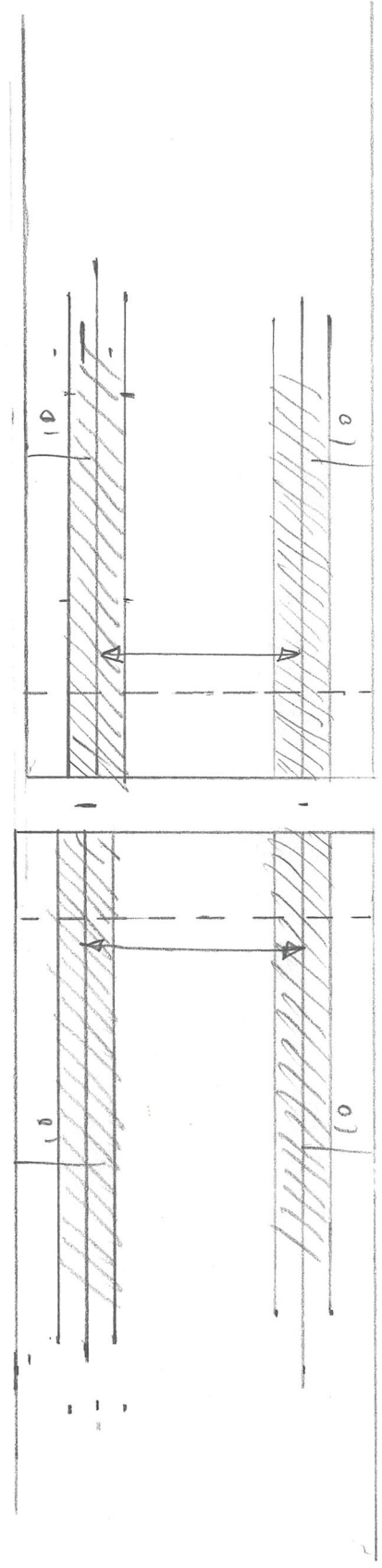
$$\frac{3}{490} \rightarrow 162 \frac{1}{2}$$



497 51.4
 2'64

2'97

3'14



Vikter

obörnat, osägar

Ventilen	3220
övre fönstret	1100
nedre fönstret	1130
bräckor	67
maskinskrav	330
	<hr/>
	Σ 5847

Stålrör	2 x 255	} 697
alrör	187	
	<hr/>	
		Σ 6544