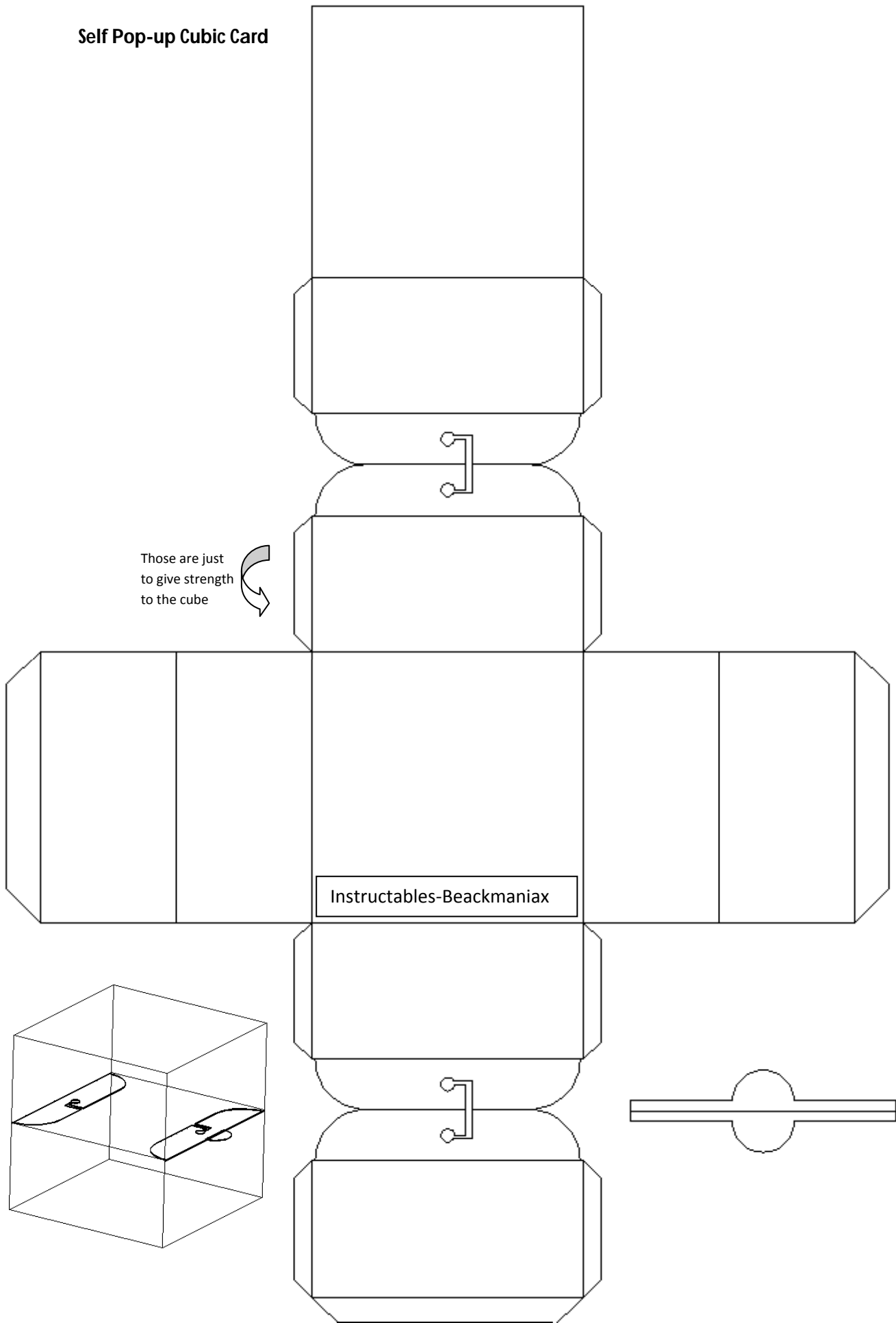


Self Pop-up Cubic Card



STEPS;

- 1.-PRINT AND PASTE ON CARD BOARD (ALSO YOU CAN CHANGE THE SIZE)**
- 2.-CUT THE MODEL**
- 3.-REMARK THE FOLDS WITH A PEN**
- 4.-FOLD AND PASTE**
- 5.-PAINT THE FACES WITH THE DESIRED MESSAGE EVEN YOU CAN PRINT PHOTOS AND PASTE THEM IN THE FACES (YOU CAN DO THIS BEFORE YOU START TO GLUE THE CUBE)**
- 6.-PUT THE RUBBER BAND IN PLACE (YOU CAN DO THIS BEFORE YOU PASTE THE LATERAL FACES)**
- 7.-SEE THE HOW TO ON (www.instructables.com/id/Self-Pop-up-Cubic-Card/)**