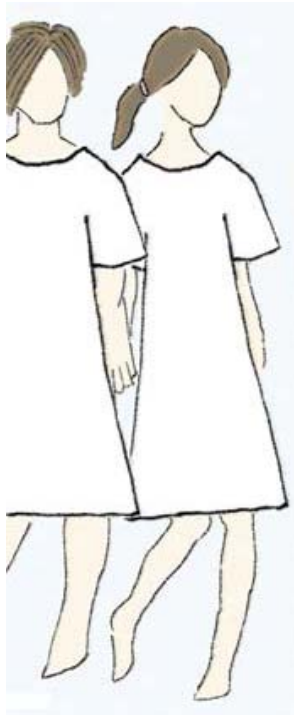


Last Minute Multi-purpose Emergency Panic Costume



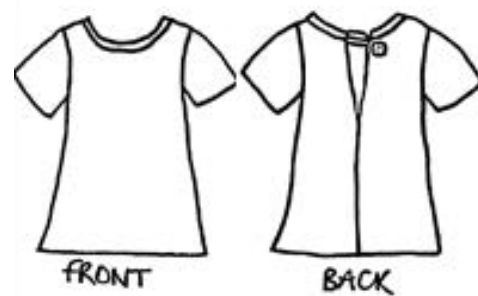
A unisex tunic with back button fastening.

Multisized to fit ages 3-4, 5-6, 7-8, 9-10 and 11-12.

Essentials

Fabric for tunic
Matching thread
1m bias binding
button

Construction



Fabric*

For ages 3-4, 5-6, you will need 1m / 39 ½ inches.

For ages 7-8, 9-10, 11-12, you will need 1.25m / 49 ½ inches.

Fabric must be at least 115cm / 45 inches wide.

*This is the amount for plain fabric; patterned fabrics may require a larger amount to pattern match.

Suggested Fabrics

cottons*, polycottons, linens.

* I used calico, it looks more old-fashioned and authentic.

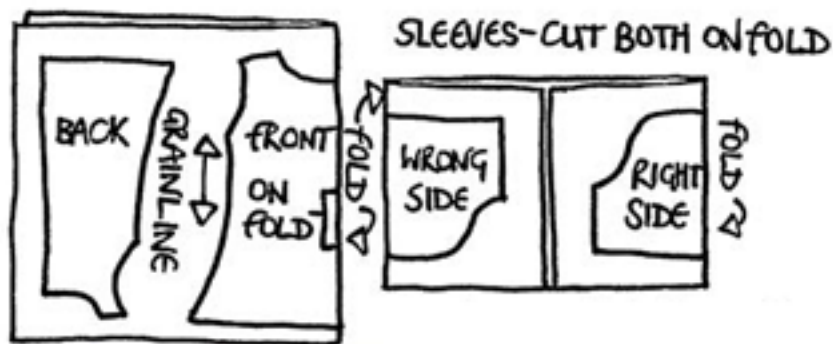
Pattern Instructions

Print and assemble the pattern pieces. Assemble them as shown below.

A1	A2	A3	A4	A5	A6	A7
B1	B2	B3	B4	B5		

Do not alter the settings on your printer. The pattern sheets have a metric grid for reference. There is a degree of overlap between sheets to help with assembly, you will need to trim some pieces before sticking them together.

Cut the pattern pieces out of the assembled and stuck together sheets.

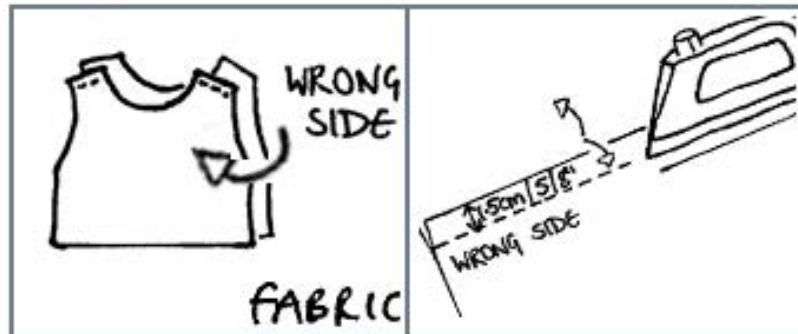


Fold your fabric, wrong sides together, right sides showing. Fold in half along the grainline (the natural direction of the weave of the fabric).

Place and pin the pattern pieces for the tunic pattern, on or off the fold as indicated. With the remaining fabric cut out the sleeve pieces, both on the fold as shown.

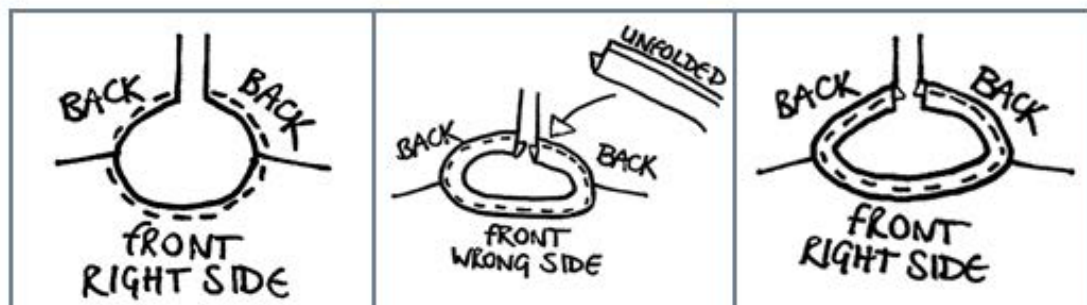
Panic costume pattern instructions

Sewing the shoulder seams



Take the fabric pieces for the top (front, back left and right), right sides facing inwards, wrong sides facing outwards and pin across the shoulder seams. Sew across the shoulder seams with a 1.5cm / 5/8 " seam allowance. Press the seams open.

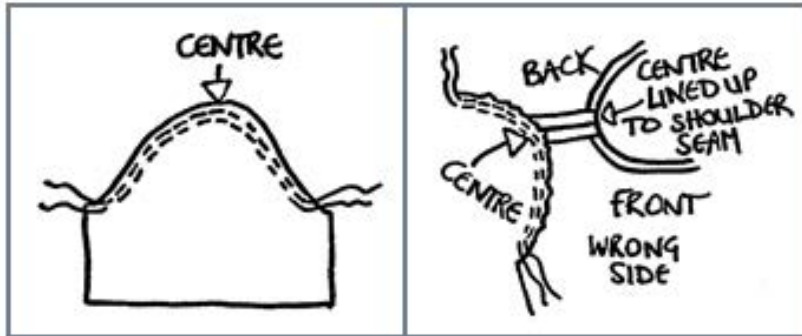
Sew the bias binding around the neckline



First, sew around the neckline 5mm / 1/4 " from the edge. This is called staystitching, and will maintain the curve of the neckline. With the wrong side of the tunic facing, unfold the bottom part of the bias binding and sew around the neckline, attaching the binding to the wrong side of the neckline.

Turn the tunic round, so that the right side is facing. Fold the binding over the neckline edge; the bottom edge of the binding remains unfolded to give a neat finish. Sew the binding to the neckline on the right side, trimming any excess to match the tunic fabric ends.

Sleeves



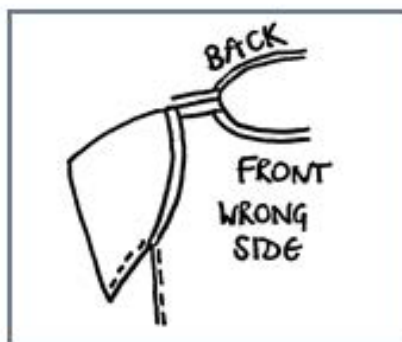
Match the centre of the sleeve top edge with the shoulder seam.

Select a long stitch on the sewing machine. Being sure to leave a length of thread at the start and end of the stitching, sew around the curved portion of the sleeve 5mm / $\frac{1}{4}$ " from the edge. Sew another curve ~ 2mm / $\frac{1}{8}$ " on the inside of the previous one.

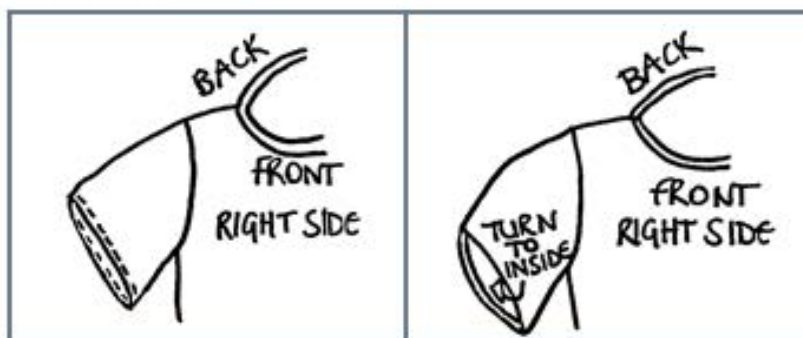
Mark the centre line of each sleeve with a pin, or in another way. Gently pulling the threads at each end of the rows of stitching will gather the edge of the sleeve. The aim is to match the curve of the sleeve with the curve of the armhole of the tunic.

Sew each sleeve in place with a 1.5cm / $\frac{5}{8}$ " seam and press open. Remember to sew the seams on the wrong side of the fabric.

Sewing up the sides of the sleeves and tunic



For both sides of the tunic, and each sleeve. Sew on the wrong side of the tunic and sleeve. Starting at the end of each sleeve, sew the sides of the sleeve continuing down the sides of the tunic with a 1.5cm / $\frac{5}{8}$ " seam. Press the seams open.

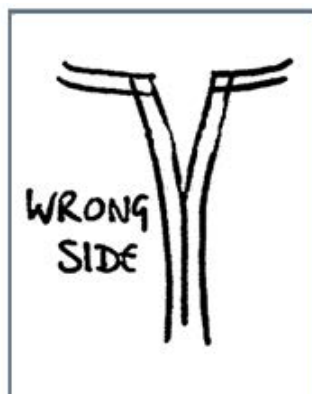


Finishing the sleeves

For each sleeve.

Sew around the bottom edge of the sleeve 5mm / ¼ " from the edge. Trim the fabric close to the stitching line, making sure not to cut into it. Turn the bottom edge towards the wrong side twice, by 5mm / ¼ " each time. Sew around the bottom edge to fix it in place. Press the bottom edge of the sleeve.

Sewing up the centre back seam.

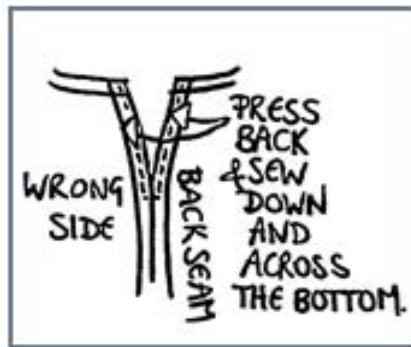


Pin the centre back seam together, with the right sides together, wrong sides facing out. Ensure the necklines meet at the top.

Starting: 20cm / 8" for age 3-4
 22cm / 8 ½ " for age 5-6
 24cm / 9 ½ " for age 7-8
 26cm / 10 ¼ " for age 9-10
 28cm / 11" for age 11-12

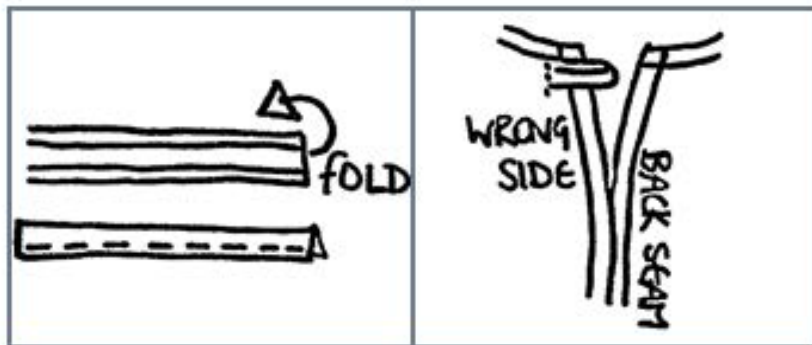
From the top, sew down the centre back with a 1.5cm / 5/8 " seam allowance to the bottom edge. Press the seam open, carrying on to include the unsewn area at the top of the tunic.

Sewing the back opening



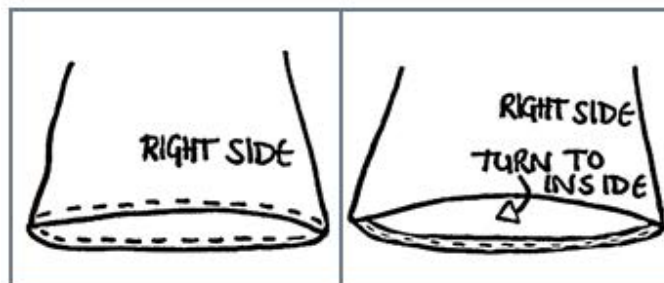
Sew down and across the bottom edge of the back opening to fix it in place.

Attaching the button and loop fastening.

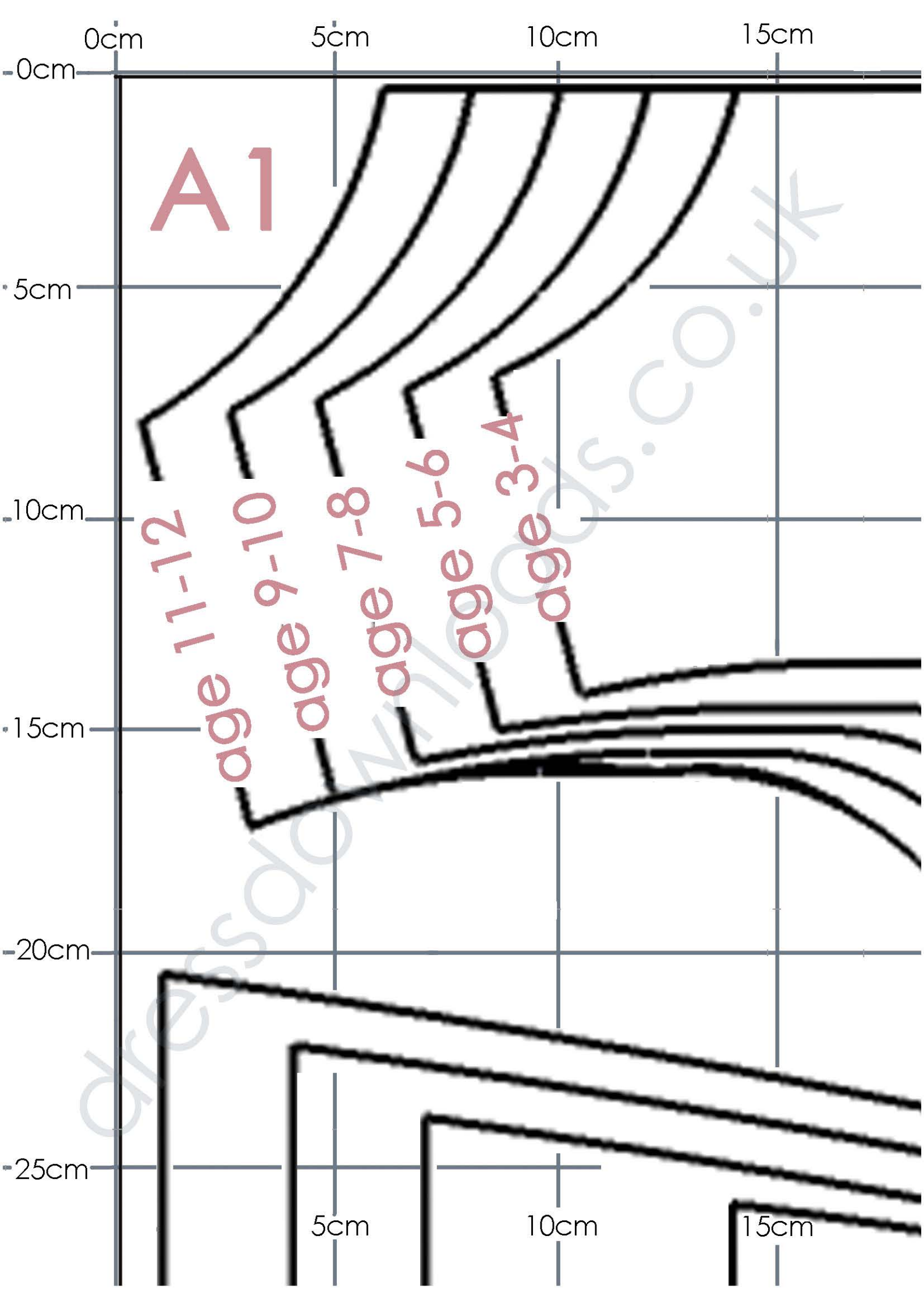


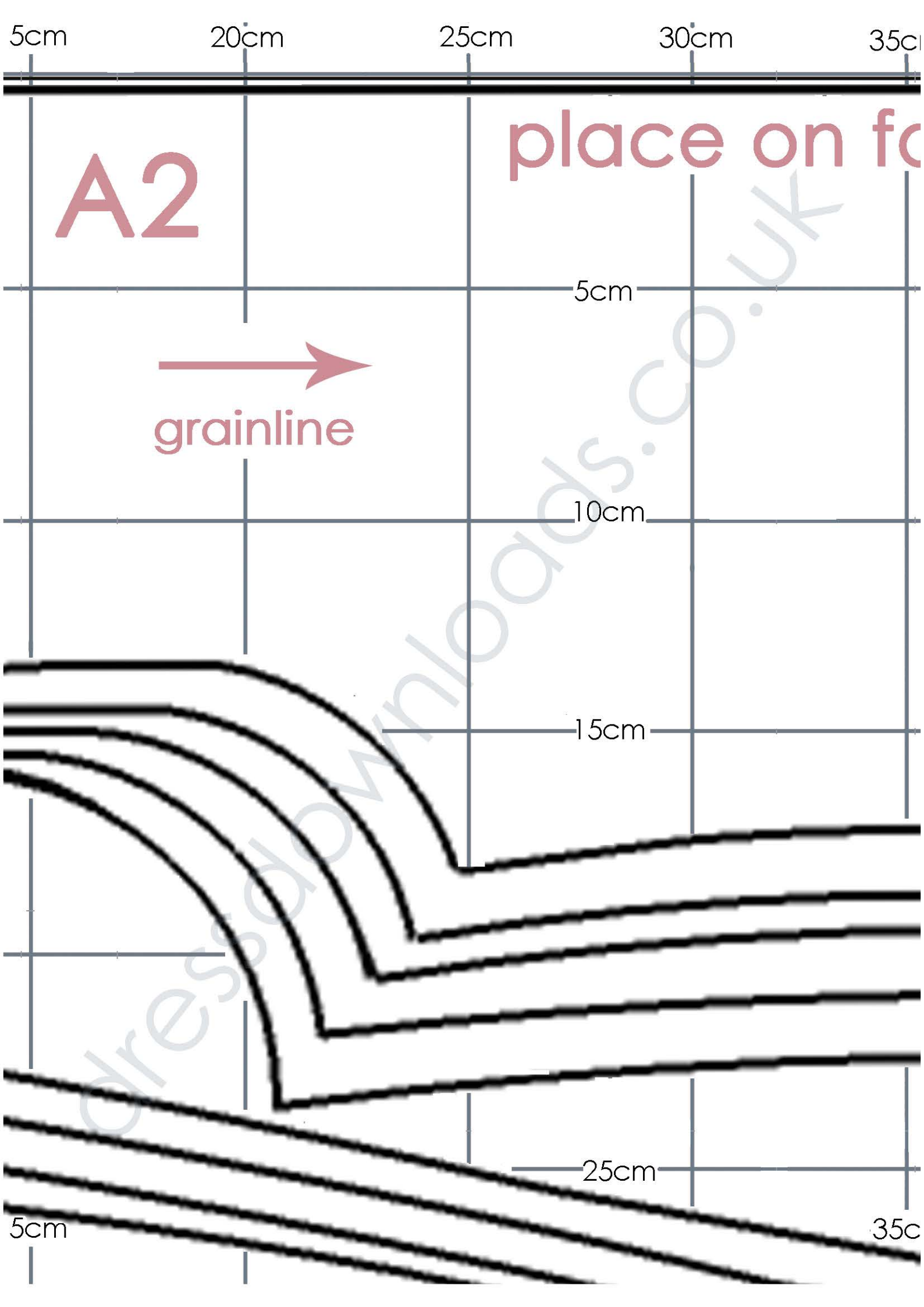
Cut a 10cm / 4" length of the bias binding. Fold it in half as shown, and sew along the length. This will be used to form the loop. Fold the sewn binding in half and sew to one of the back edges of the tunic on the wrong side. Sew the button on the right side of the opposite edge of the back opening.

Bottom hem.



Sew along the bottom edge of the tunic 5mm / ¼ " from the bottom. Trim any excess fabric being sure not to cut across the stitching. Turn the bottom edge towards the wrong side twice, by 5mm / ¼ " each time. Sew around the bottom edge to fix it in place. Press the bottom hem to complete the tunic.





35cm

40cm

45cm

50cm

n fold

A3

5cm

10cm

15cm

panic costume

front

25cm

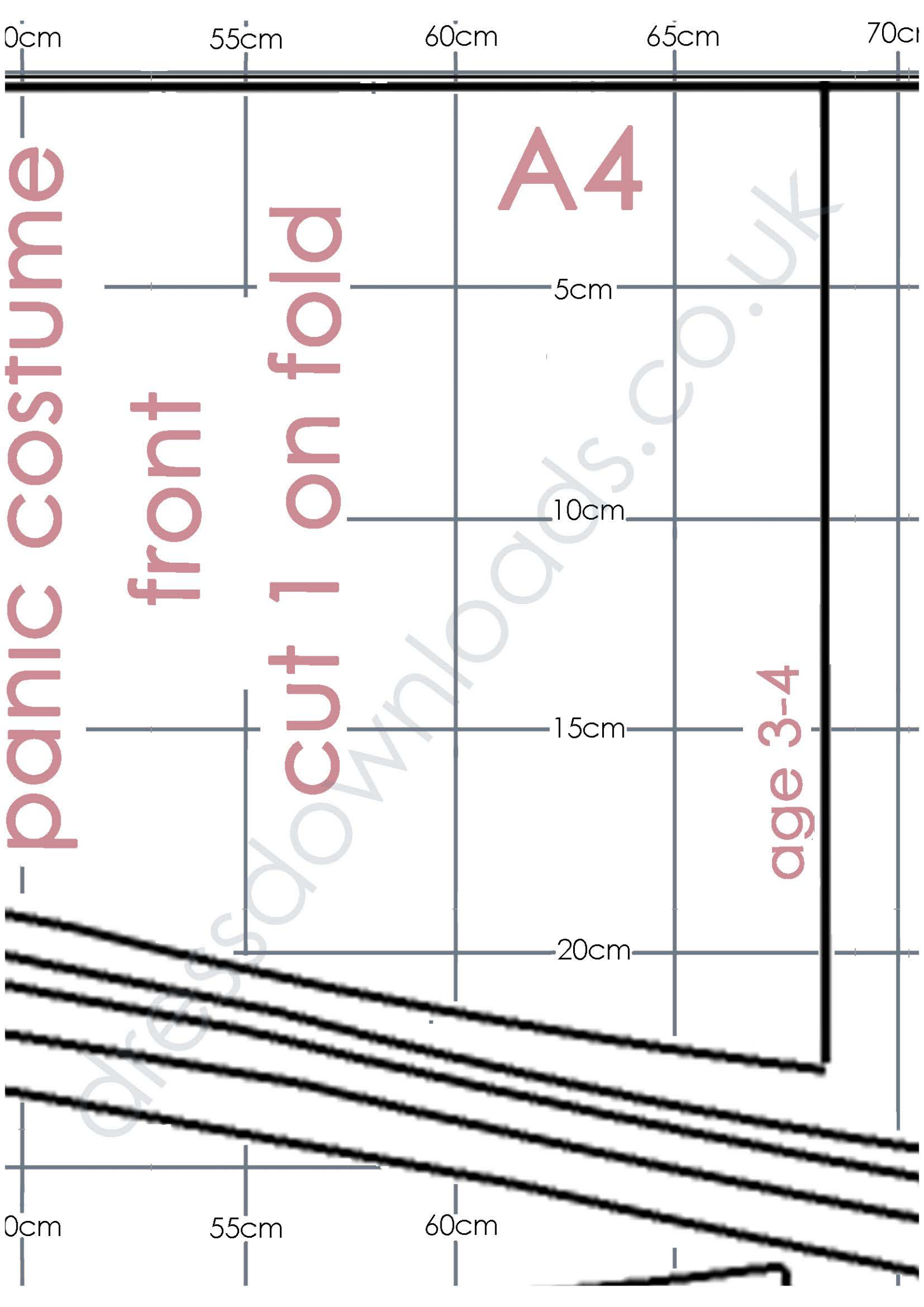
35cm

40cm

45cm

50cm





70cm

75cm

80cm

85cm

A5

5cm

10cm

15cm

20cm

age 5-6

age 7-8

age 9-10

age 11-12

80cm

85cm

age 5-6

dressdownloads.co.uk

85cm

90cm

95cm

100cm

1

A6

5cm

10cm

age 11-12

panic costu

sleeve

cut 2 on fo

25cm

85cm

90cm

95cm

100cm

1

age 11-12

Dressdowntrends.co.uk

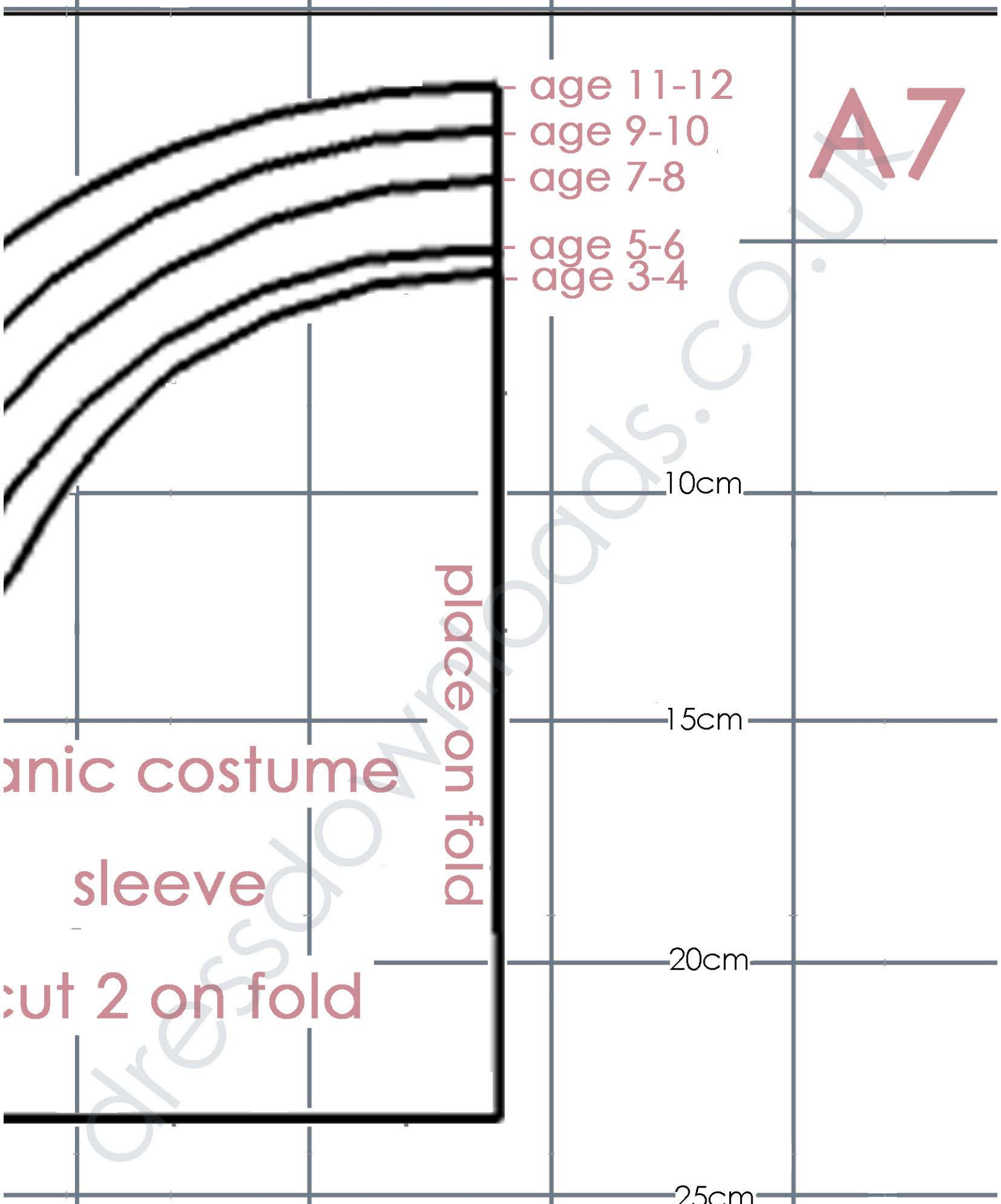
100cm

105cm

110cm

115cm

1



age 11-12

age 9-10

age 7-8

age 5-6

age 3-4

A7

10cm

15cm

20cm

25cm

anic costume

sleeve

cut 2 on fold

place on fold

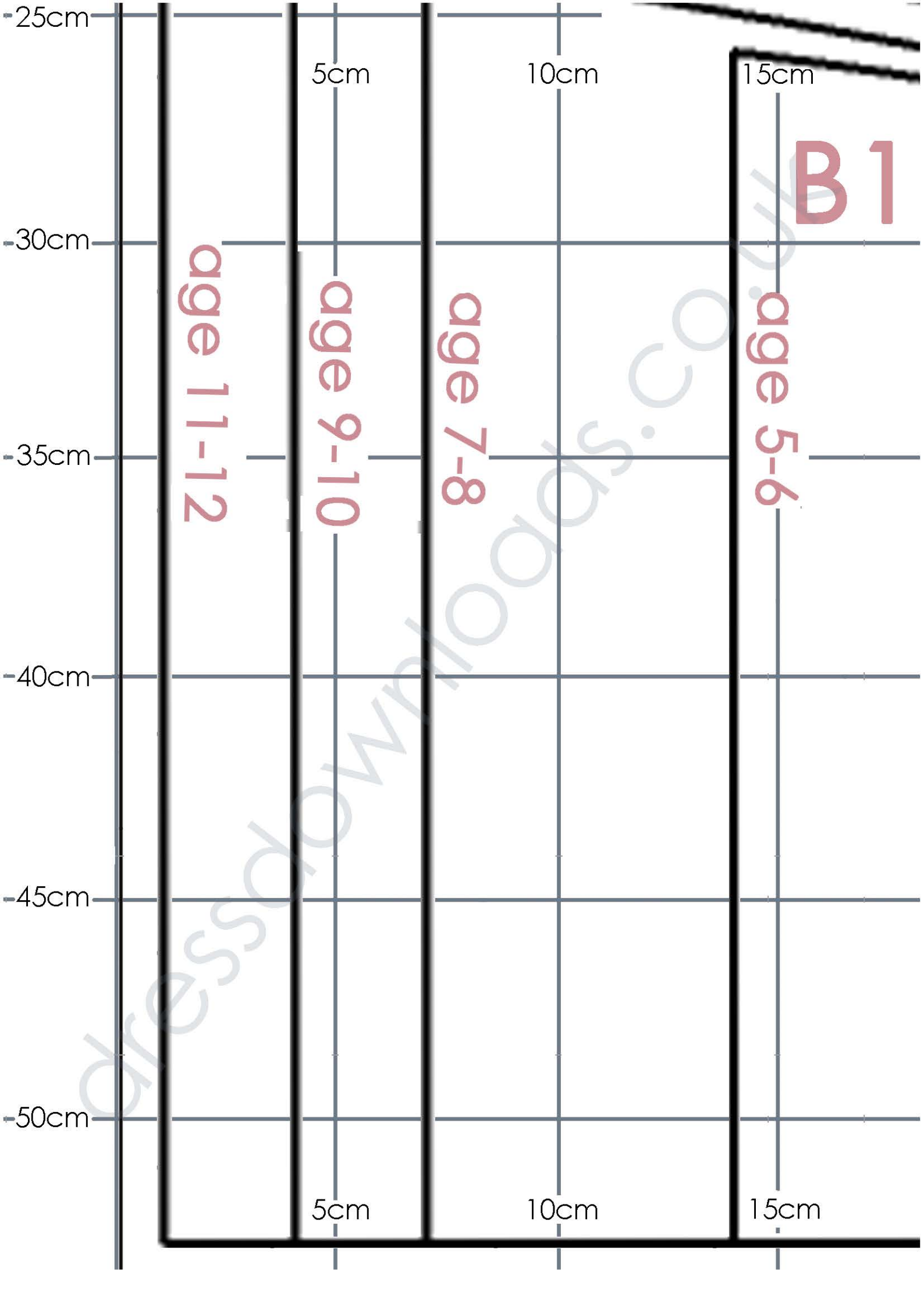
100cm

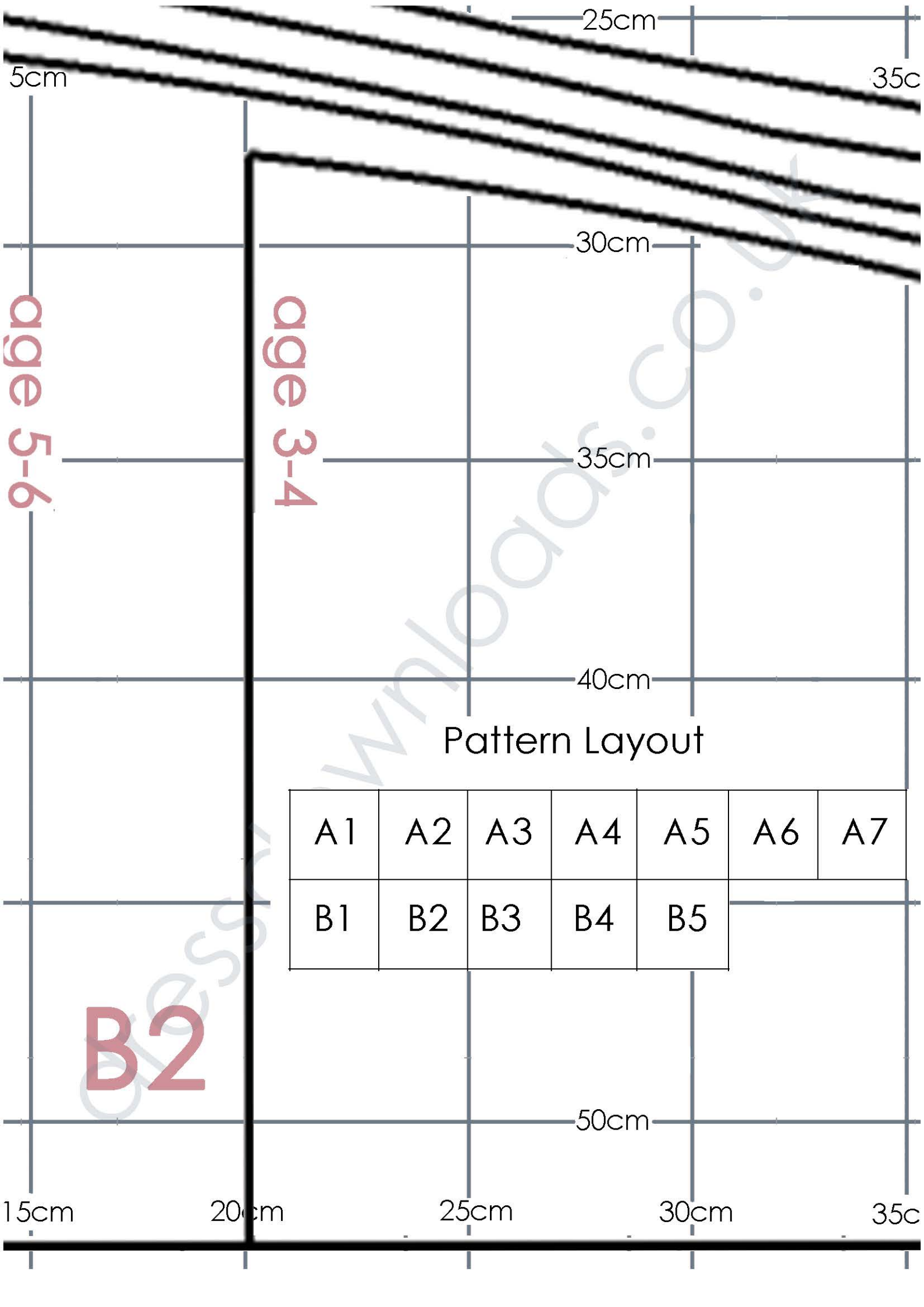
105cm

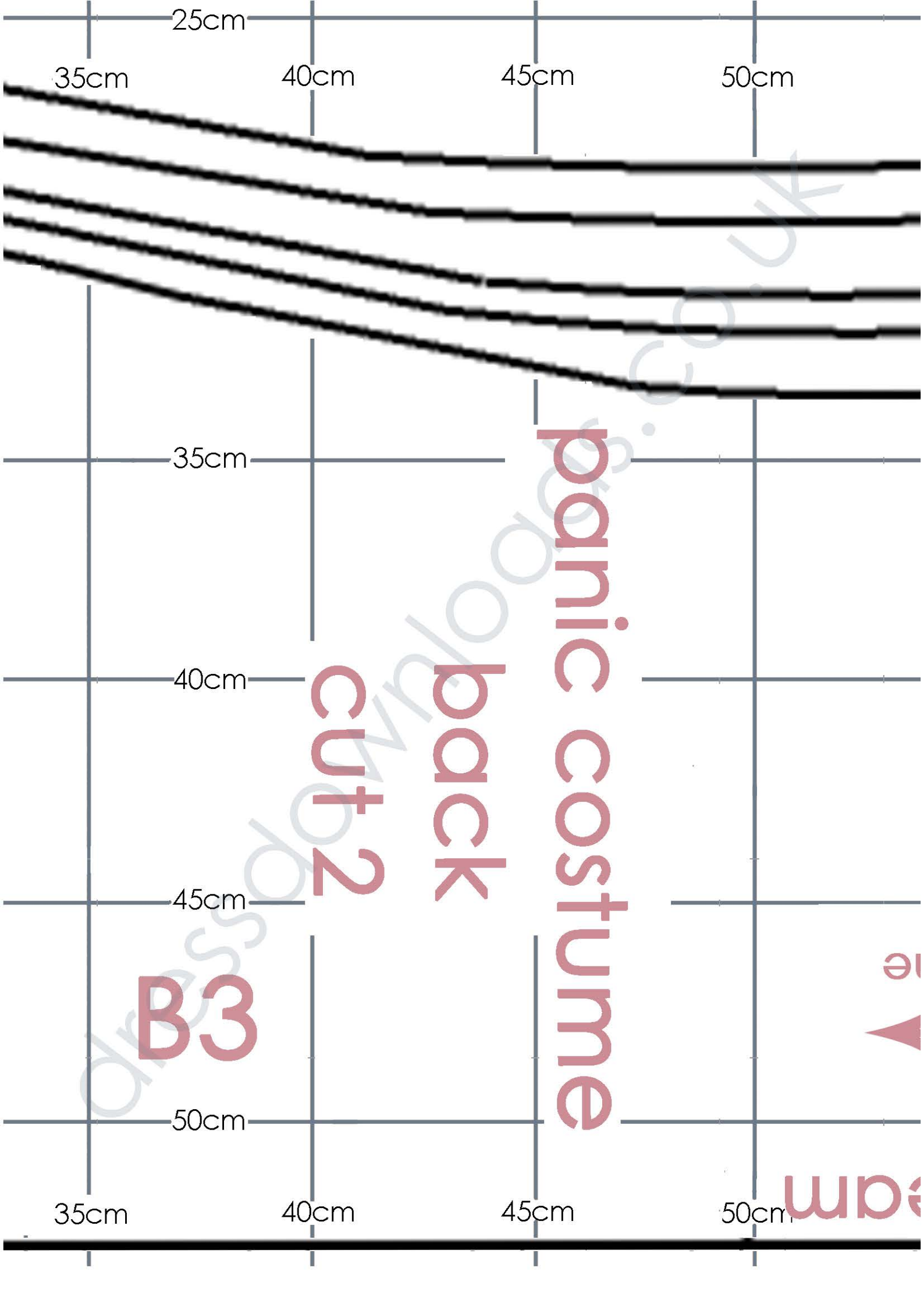
110cm

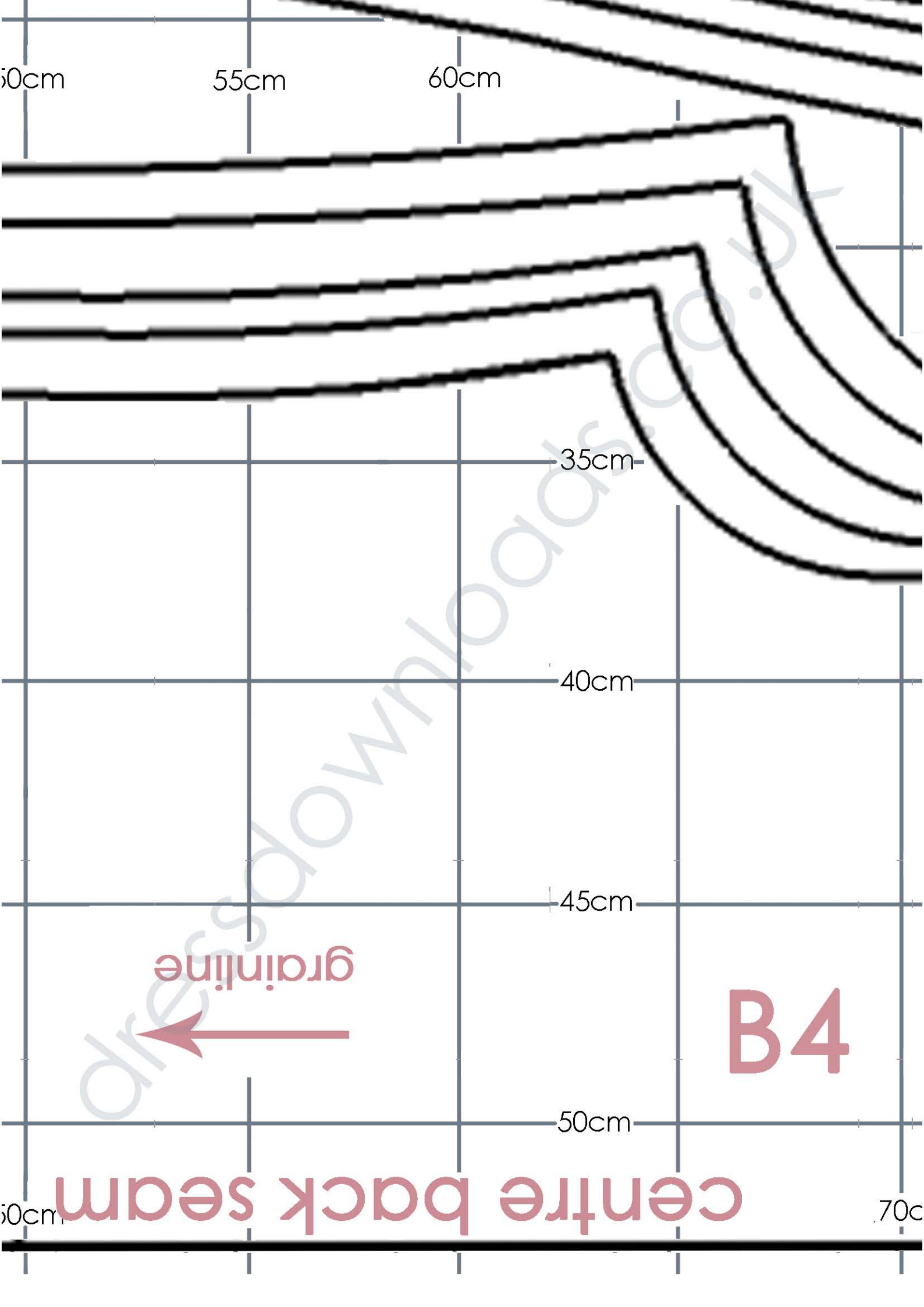
115cm

1









50cm

55cm

60cm

35cm

40cm

45cm

50cm

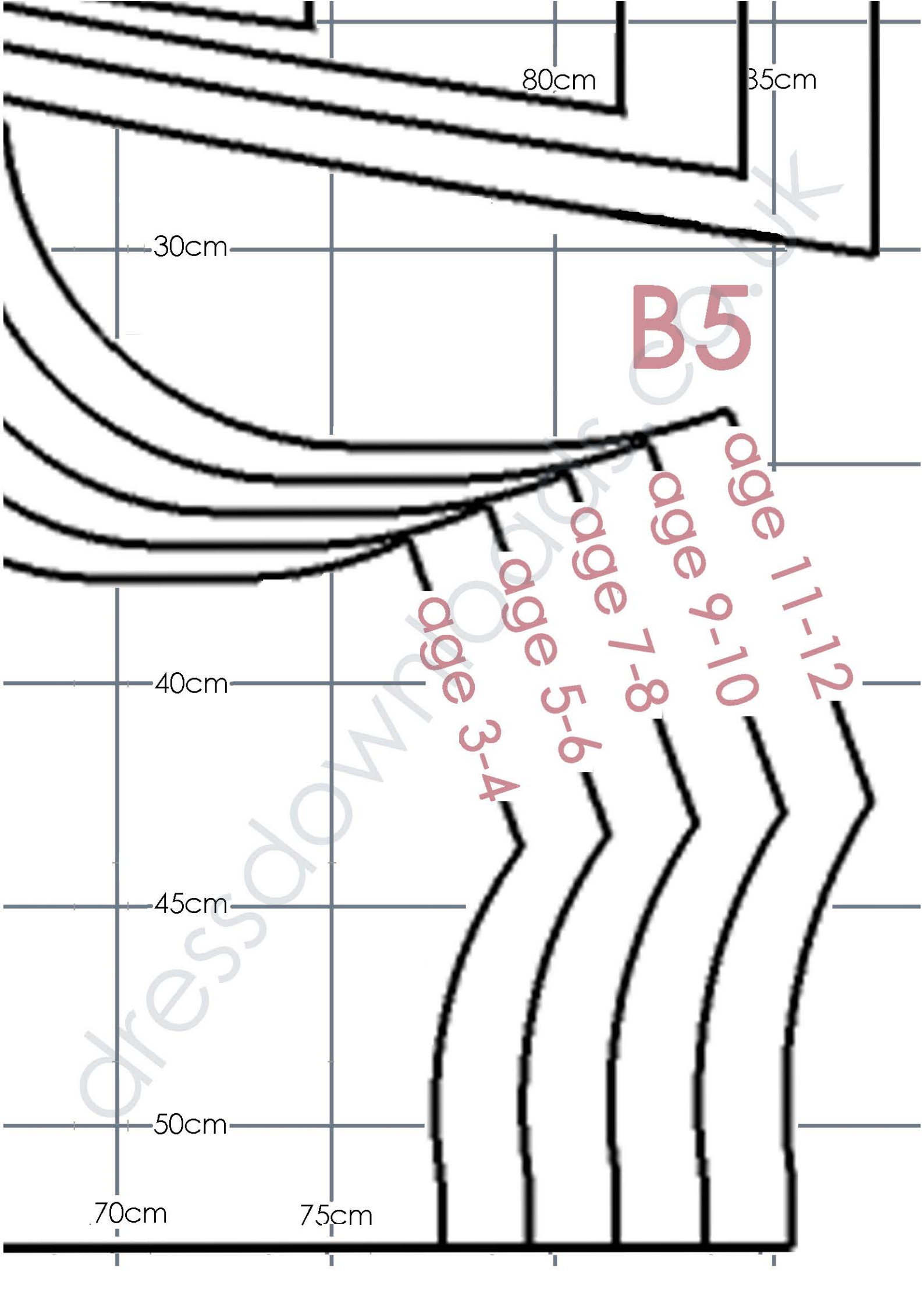
70cm

centre back seam

grainline



B4



80cm

35cm

30cm

B5

age 3-4

age 5-6

age 7-8

age 9-10

age 11-12

40cm

45cm

50cm

70cm

75cm