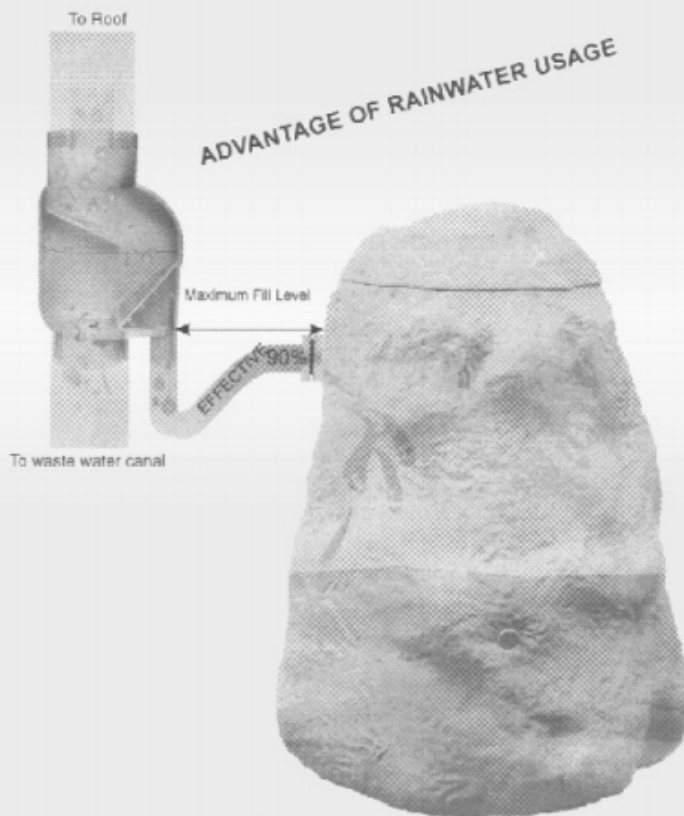
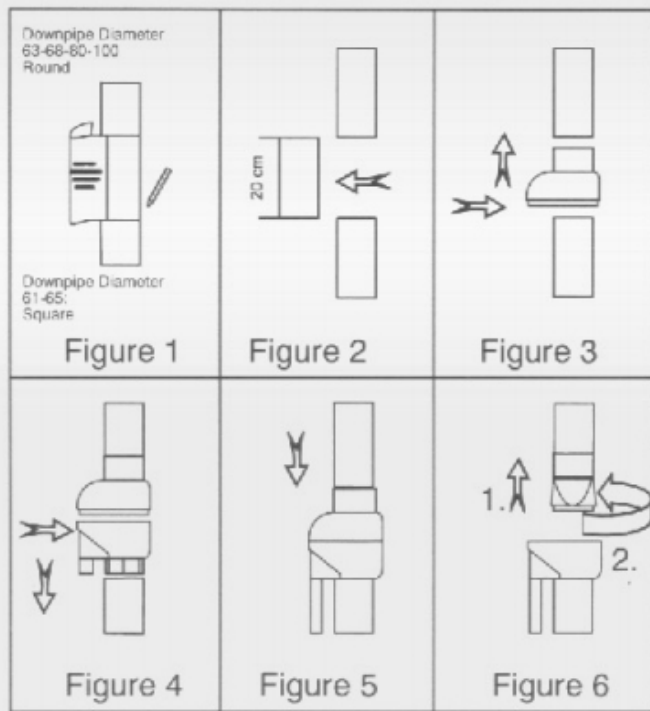


FOLLOWING ITEMS INCLUDED:

- FILTER T33 Top and Bottom
- Sieve 0,2mm
- Reducer to fit Filter fitting
- Connector 5/4"
- Flexible Hose 5/4"
- One piece Hose Clip
- U-Rubber Seal
- Winter Plug
- Instruction Manual

INSTRUCTION MANUAL  
FOR  
DOWNPIPE FILTER T 33

INSTALLATION OF FILTER IN DOWNPIPE



Dear Customer Congratulations on your decision to purchase

Our Rainwater Filter In the choice of material and during the Production process we gave special attention to ensure long term functionality

**Rainwater usage with our filters** The filter has a high effectiveness (90%) ensuring that the Water Butt is filled very quickly Even during short showers as usual in sommer months

**Note for Installation Automatic fill stop function** the filte can be used for automatic

Filling of water butts if you wish to use the automatic fill sstop function the installation height Of the filter is important.the bottom edge of the filter should be appx 4 cm under the top edge Of the water butt ( see large illustration) the water butt will only be filled to this level **Winter Use** If no water is to be collected during winter months the winter stop plug should Be fitted into the hose connection in the filter.After each frost period the correct fit of the filter in the downpipe should be checked

Installation Guide 1.Choose installation height if fill stop automatic is required mark the height of the butt top on the downpipe using a spirt level,from this marking measure 15cm upwards and mark and 5cm downwards and mark you can use this manual see Fig.1

2.Cut the downpipe at the top and dottom marks and remove see Fig.2

3.Instll Filter choose reduction according to downpipe diameter not required

reductions should be cut out with a sharp knife top fixpart of filter in the downpipe see Fig 3. 3, as tight as possible fix bottom part of filter in the downpipe see Fig. 4. put in sieve and test if loose press top and botom part of filter together making sure fit is tight see Fig.5

4.if required secure filter to downpipe using pipe clips make sure that there is at least 12cm between top of filter and pipe clip

5. Instaall hose connector in the water butt ( screw outside seal inside) do not make the hole in the water butt to large

6. Imediatley connect the included hose to the water butt and filter the hose is fixed to the

hose connection using a hose clip normally no clip is requiredd on the filter side of the connection

7. To empty the sieve push top part of filter upwards and turn towars wall see Fig.6