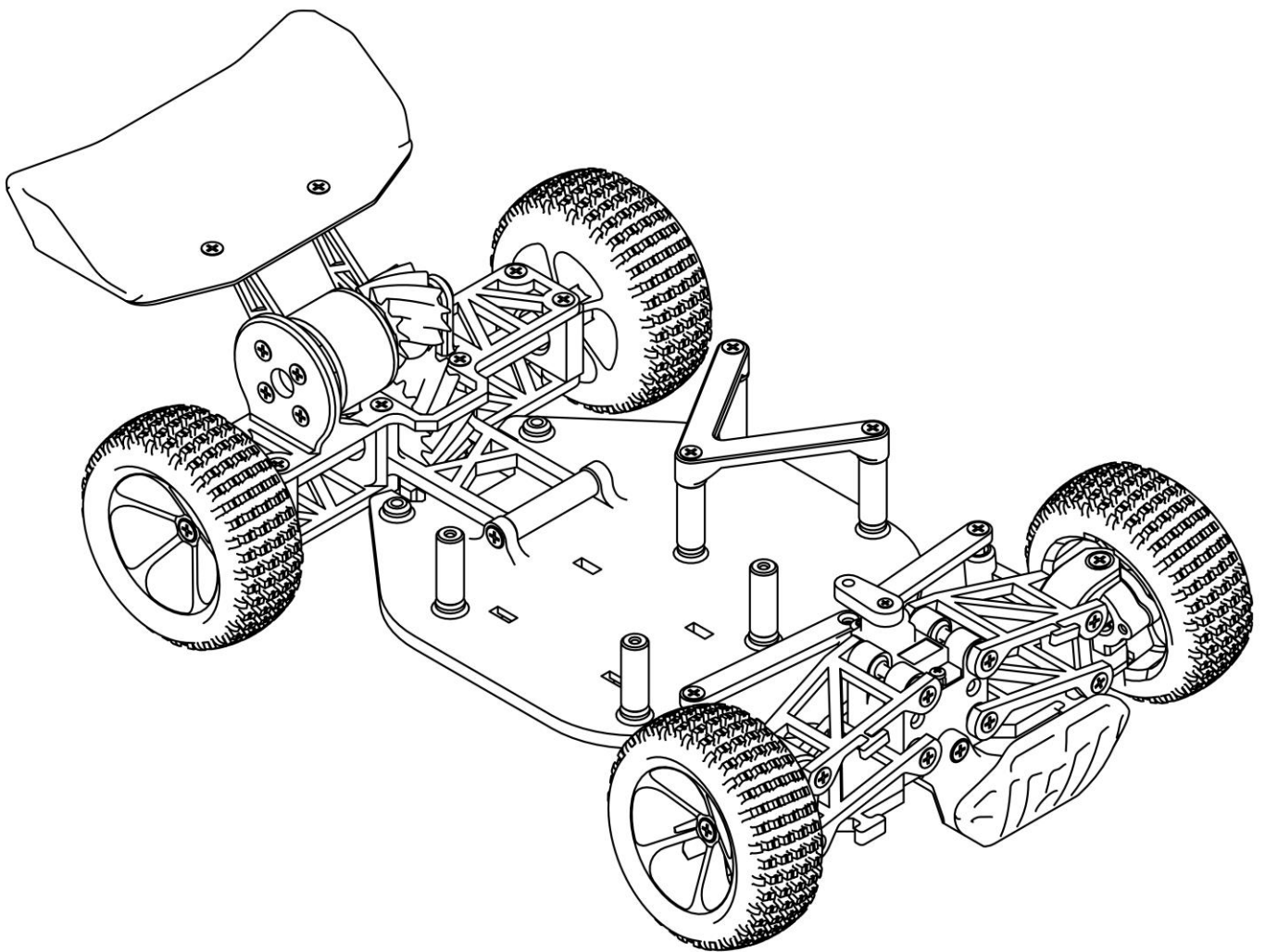


ASSEMBLY INSTRUCTION

CARDUINO II

FULLY 3D PRINTABLE, ARDUINO BASED RC CAR



Design By

Elia Cannizzaro (IG: @enginel_i_3d)

Step 1) Rear Suspension Assembly

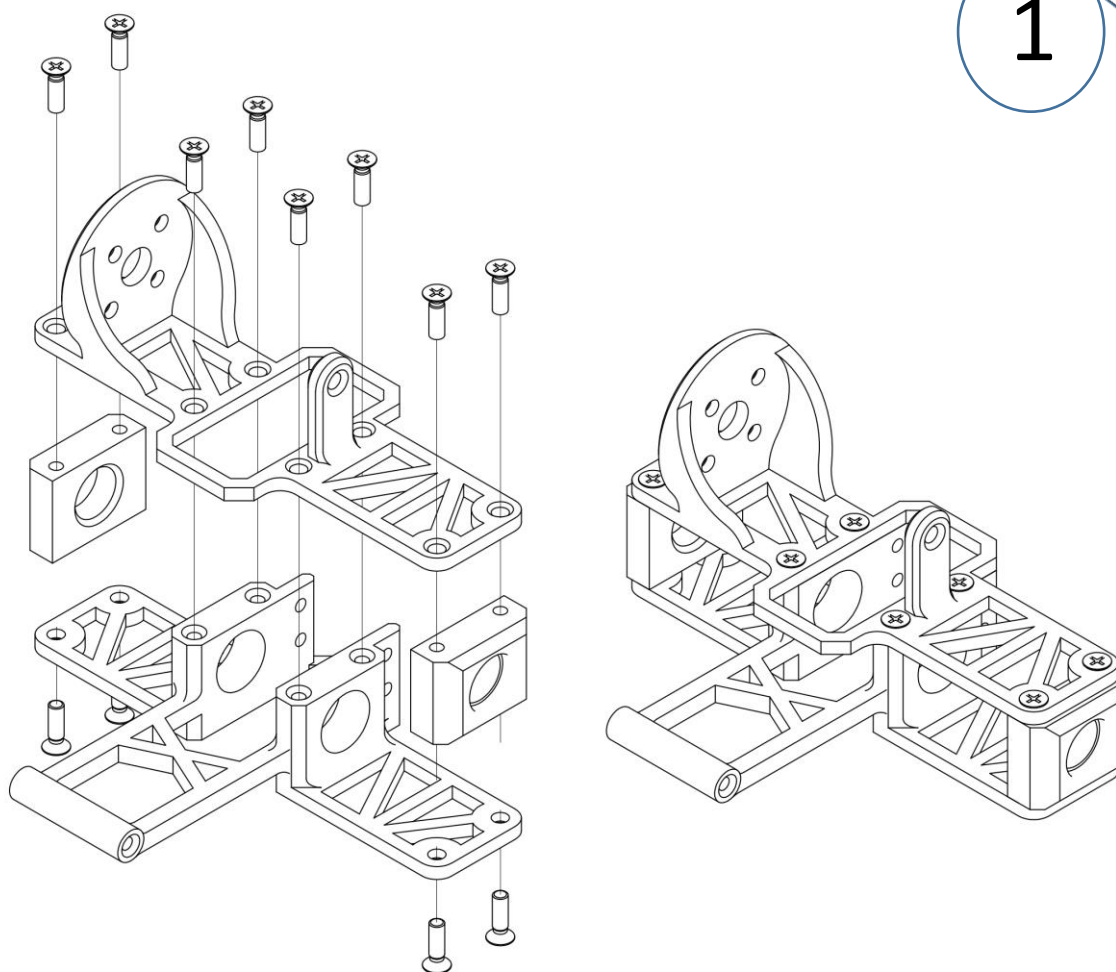
Printed parts list:

- RearSuspension_Bottom
- RearSuspension_Upper
- RearSuspension_Hub x2
- Rear_Wheel x2
- Rear_Shaft
- CrownGear
- Rear_WingMount (Left and Right)
- Rear_Wing (1 or 2)

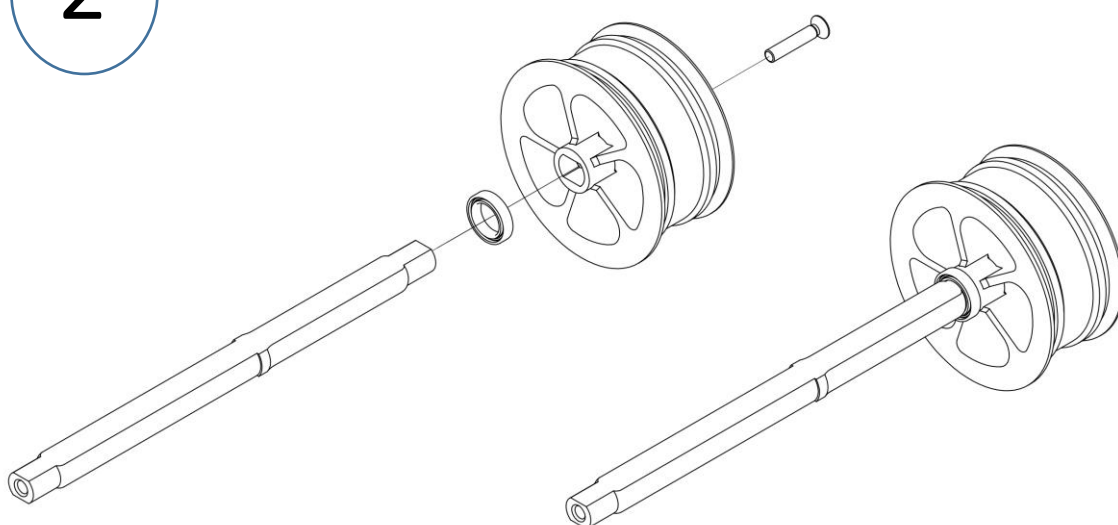
Non printed parts list

- 8x12x3.5 ball bearing x2
- M3x10 - M3x20 screws

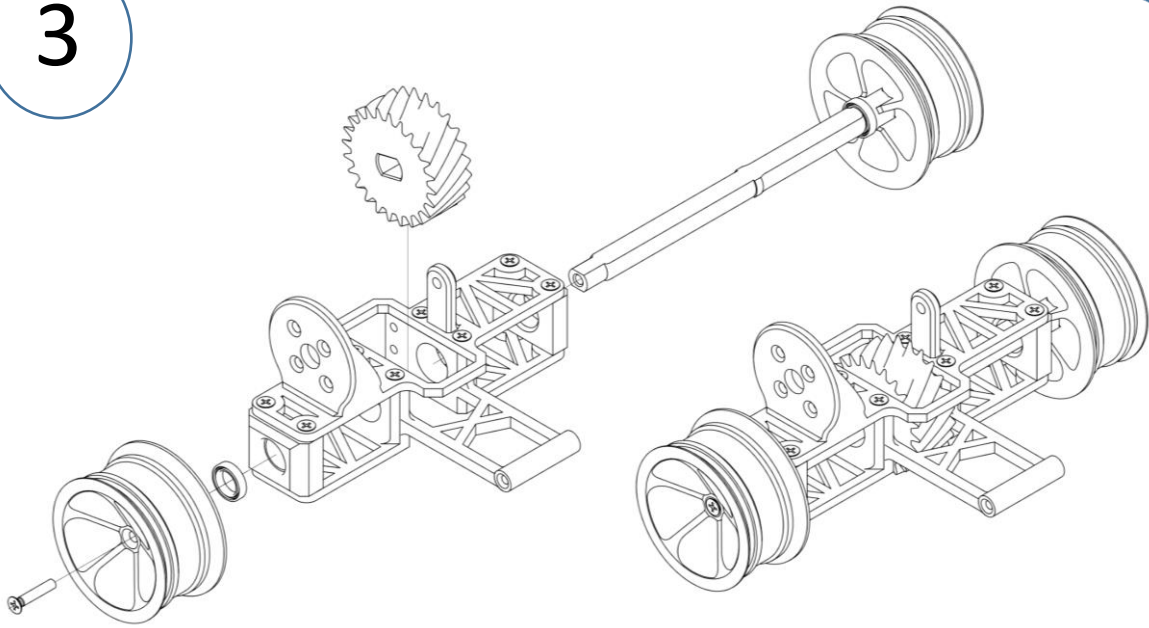
1



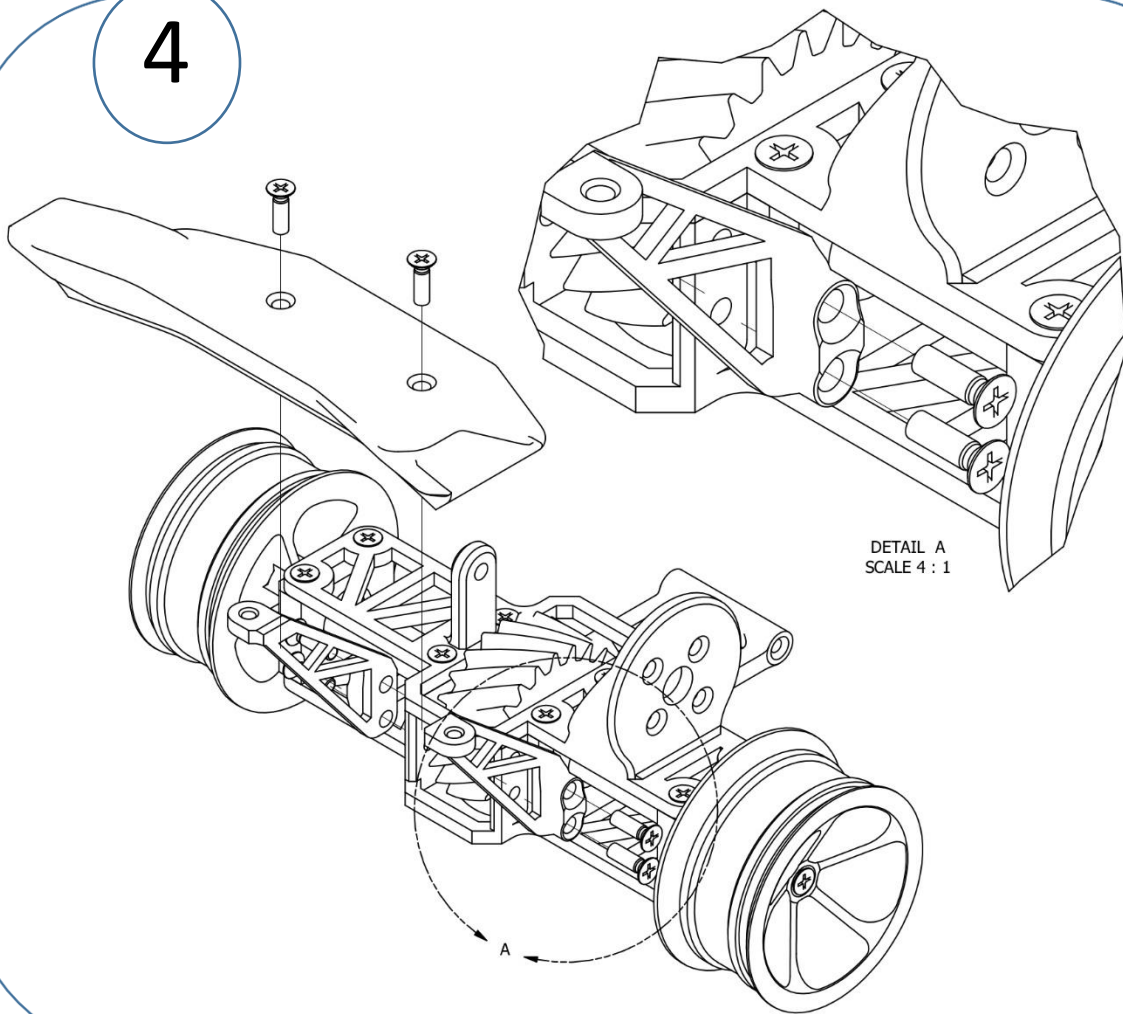
2



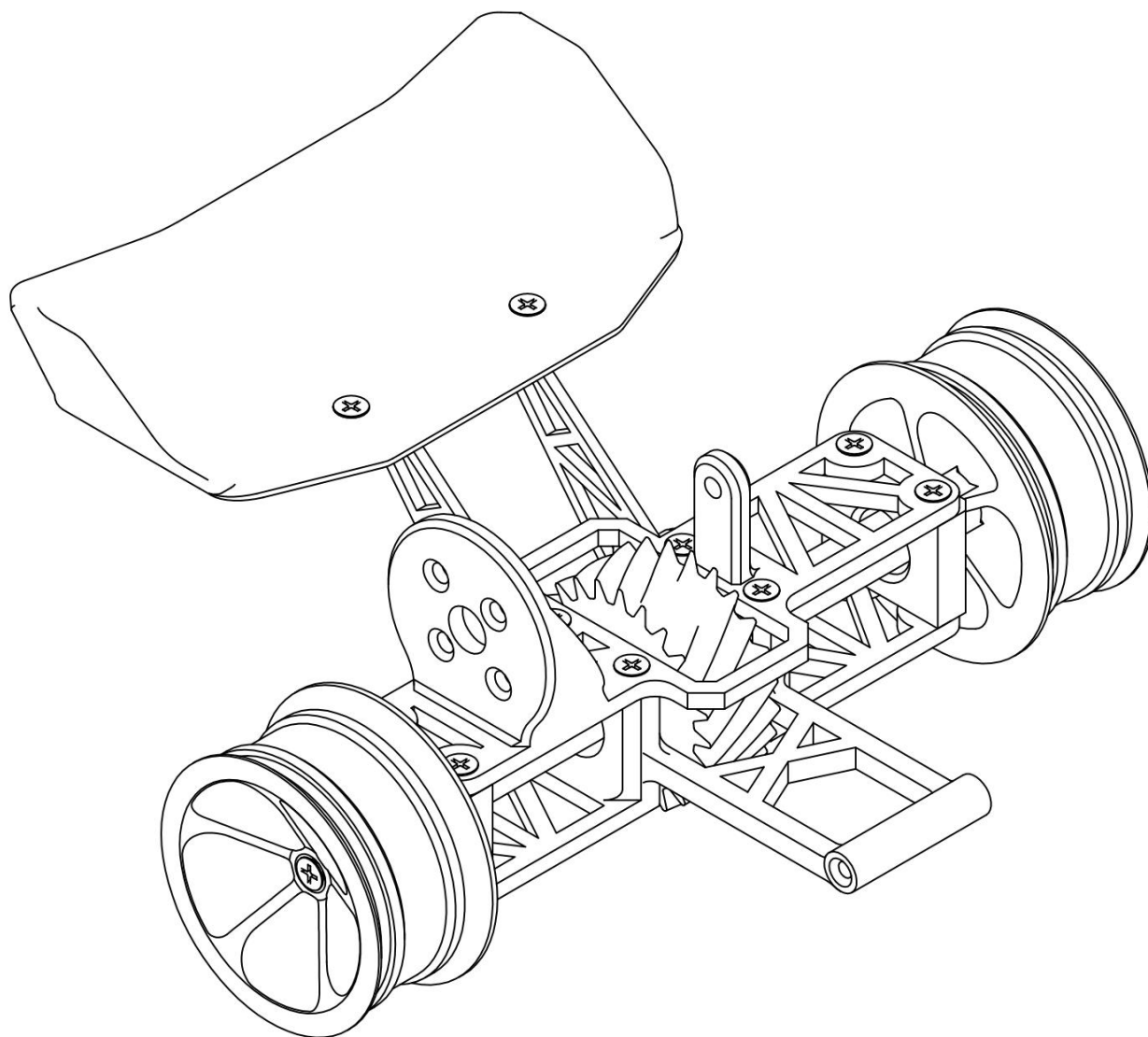
3



4



Rear Suspension Assembly



Step 2) Front Suspension Assembly

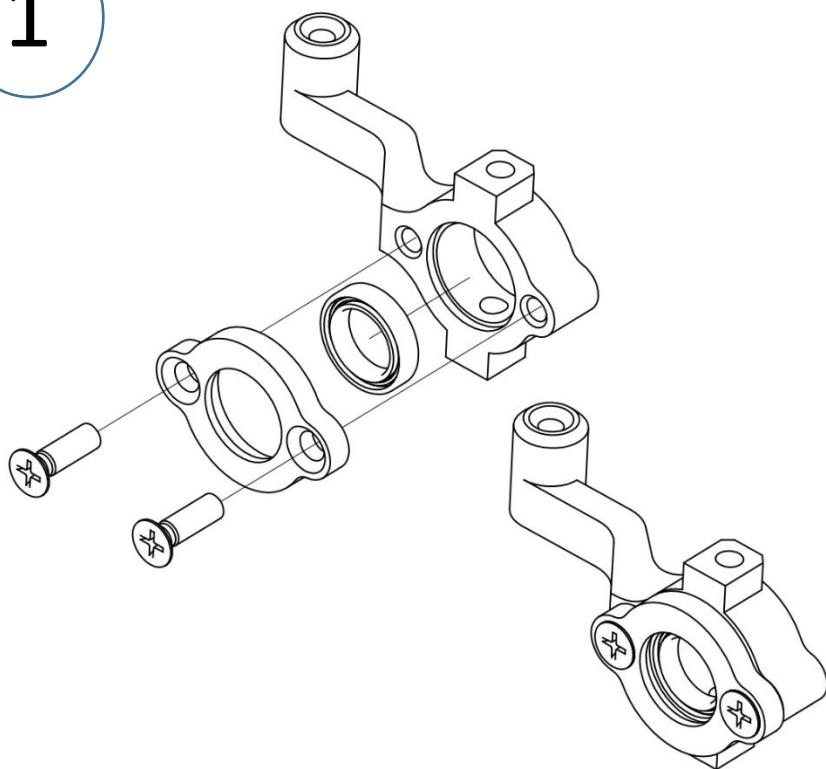
Printed parts list:

- Front_Hub (Right and Left)
- Front_HubLock x2
- Front_Wheel x2
- Front_WheelLock x2
- Chassis
- Front_SuspensionBottom (Right and Left)
- Front_SuspensionUpper (Right and Left)
- Front_HubMount x2

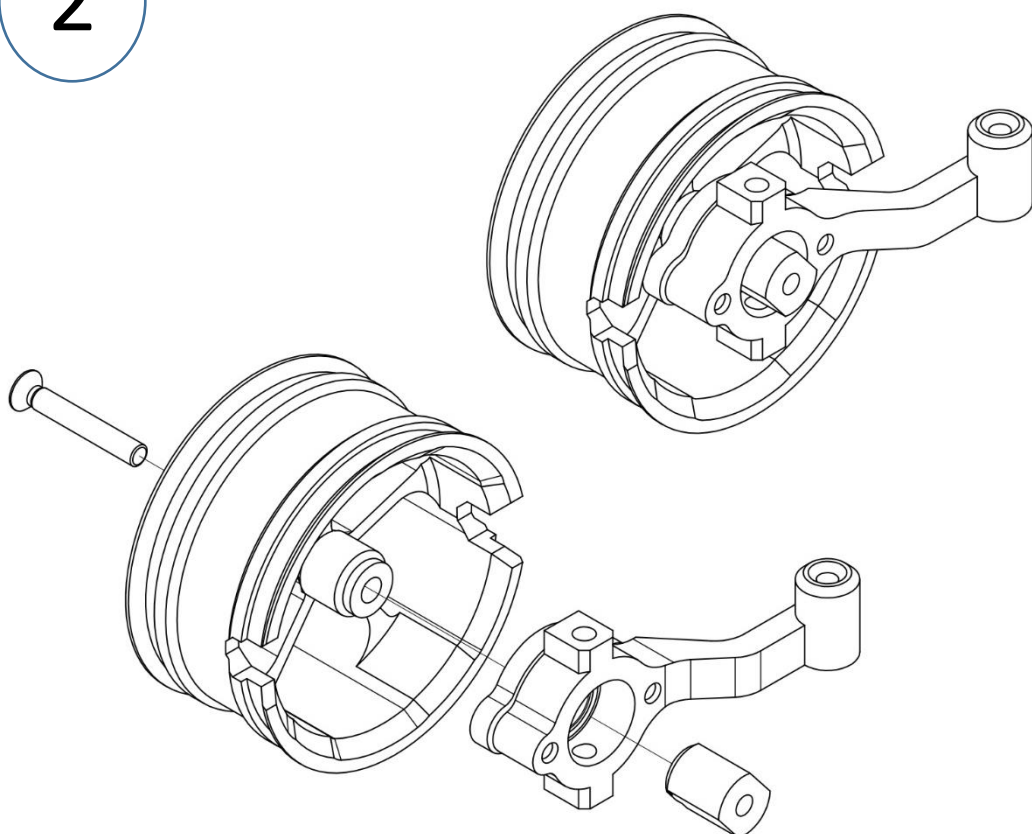
Non printed parts list

- 8x12x3.5 ball bearing x2
- M3x10 - M3x16-20 screws

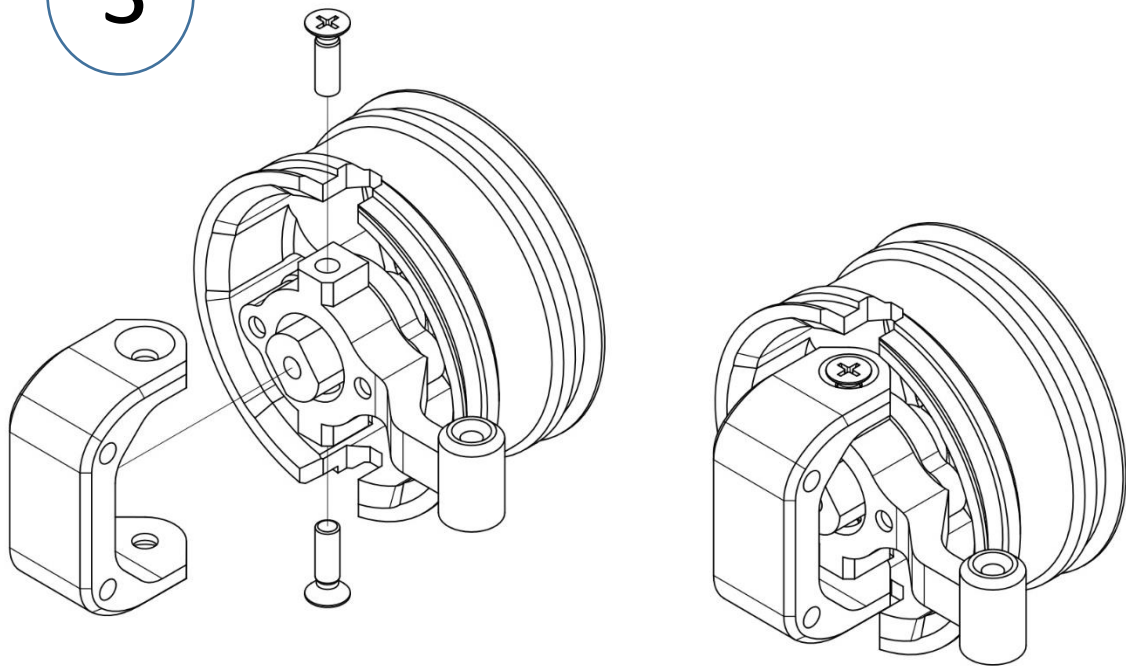
1



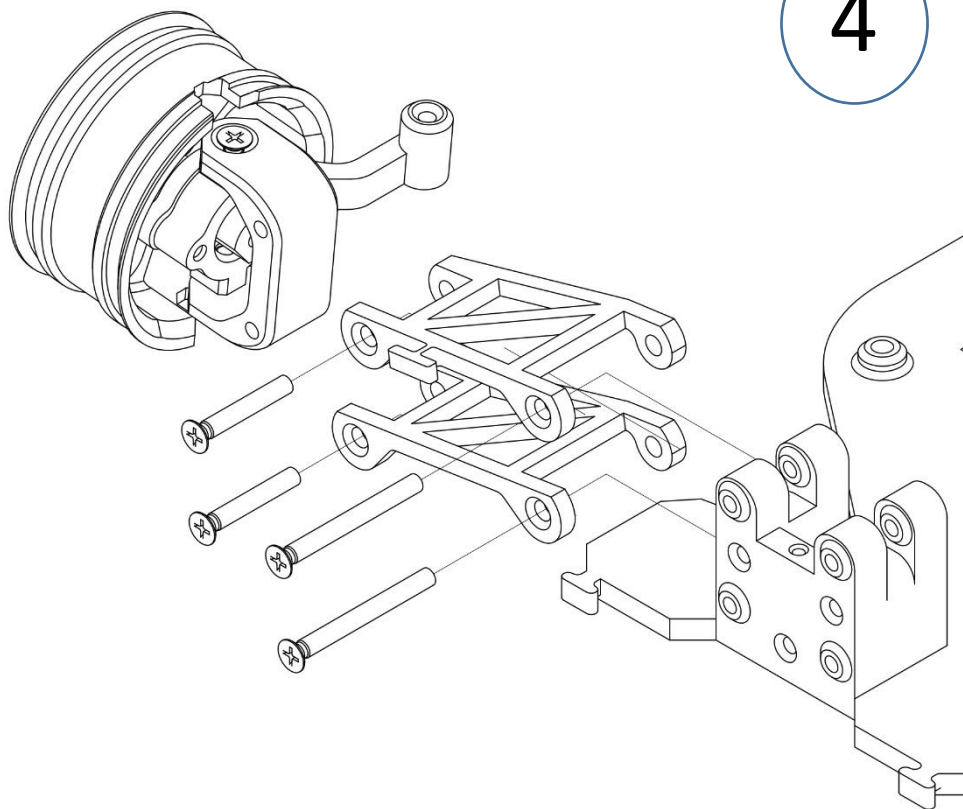
2



3



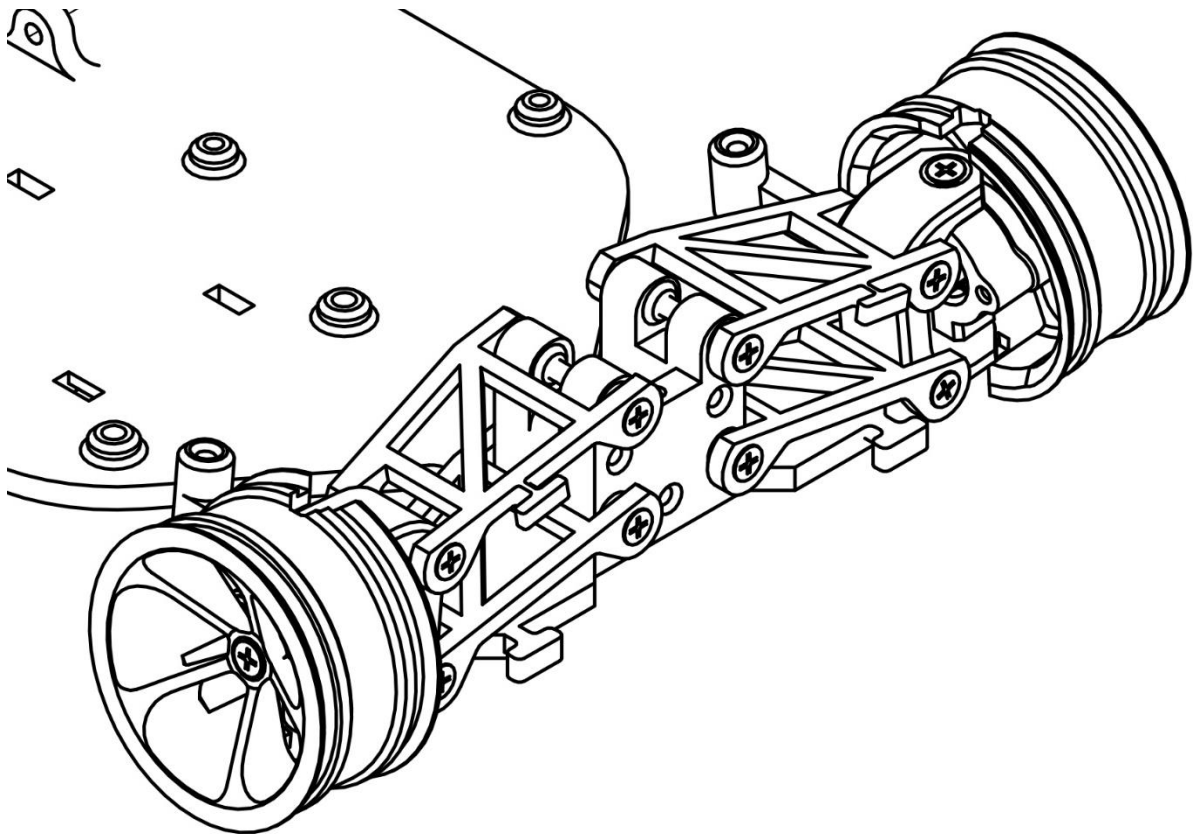
4



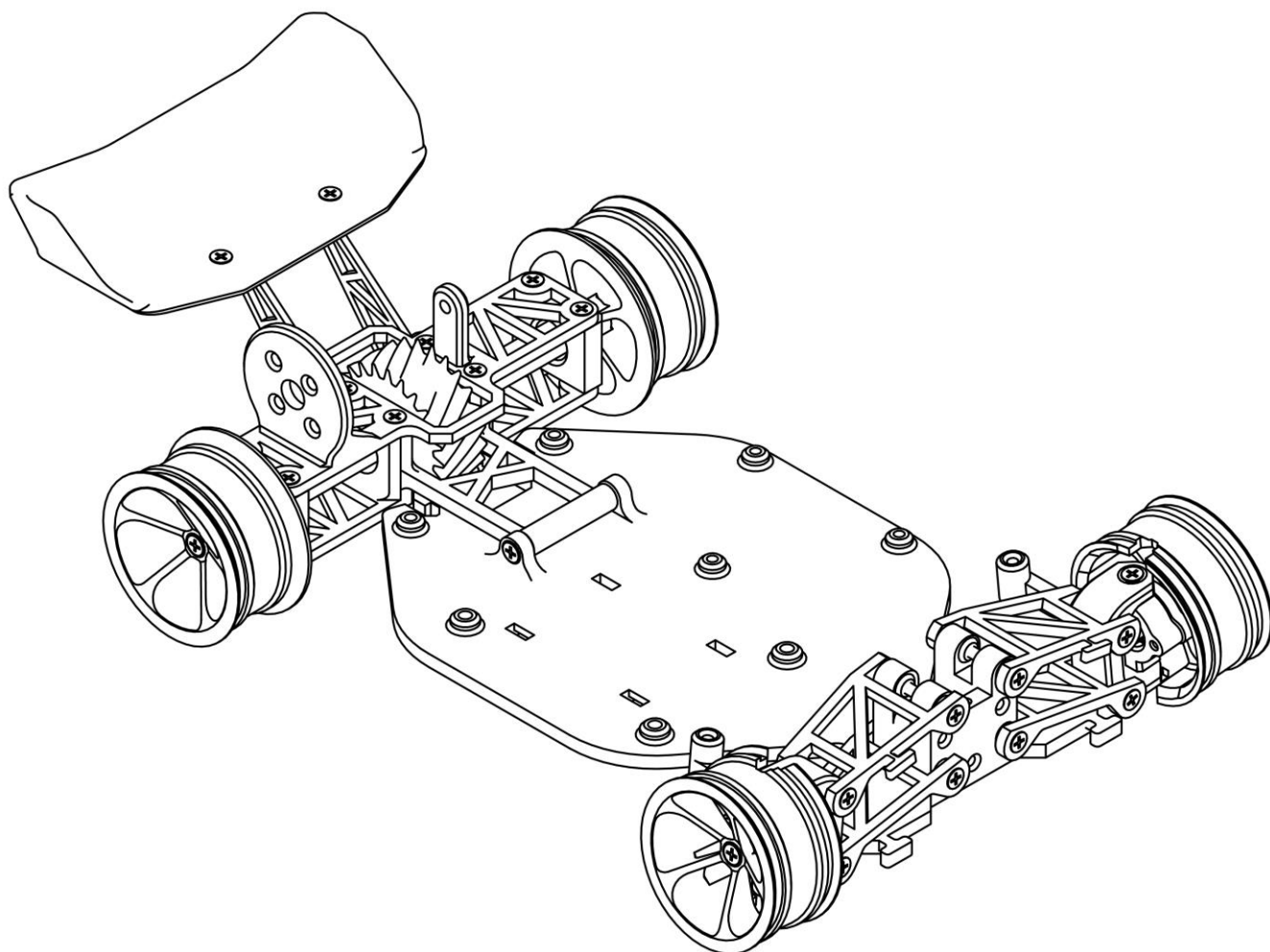
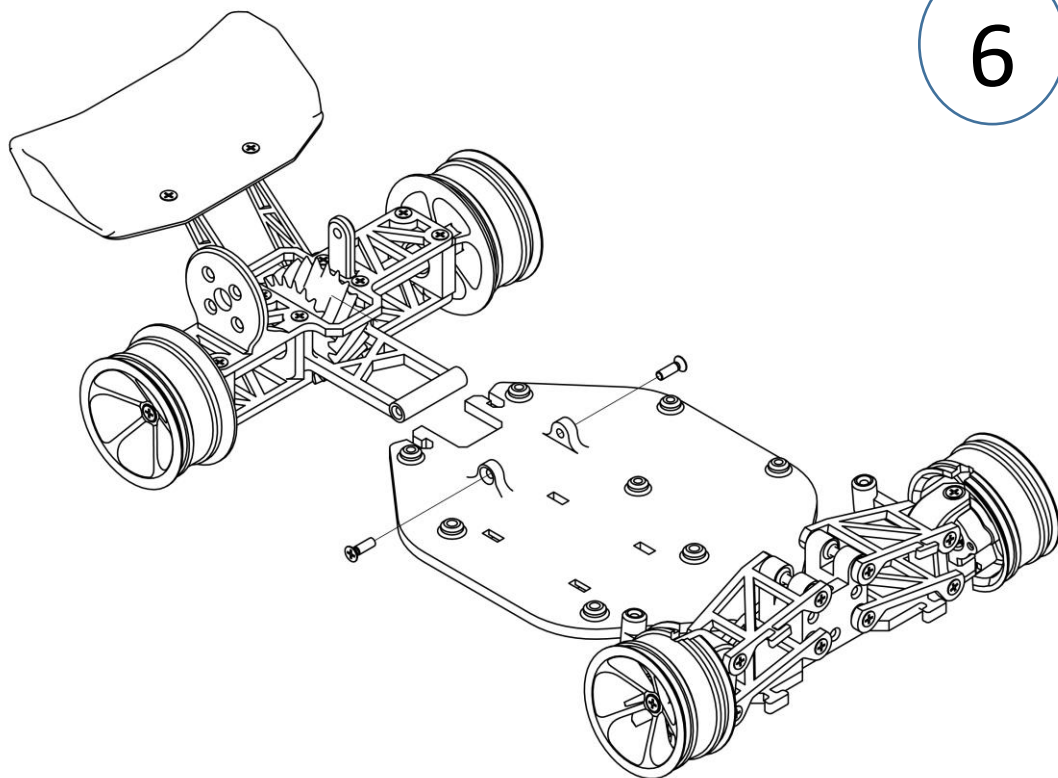
5

Repeat the Front suspension assembly process for the Left components

Front Suspension Assembly



6



Step 3) Final Assembly

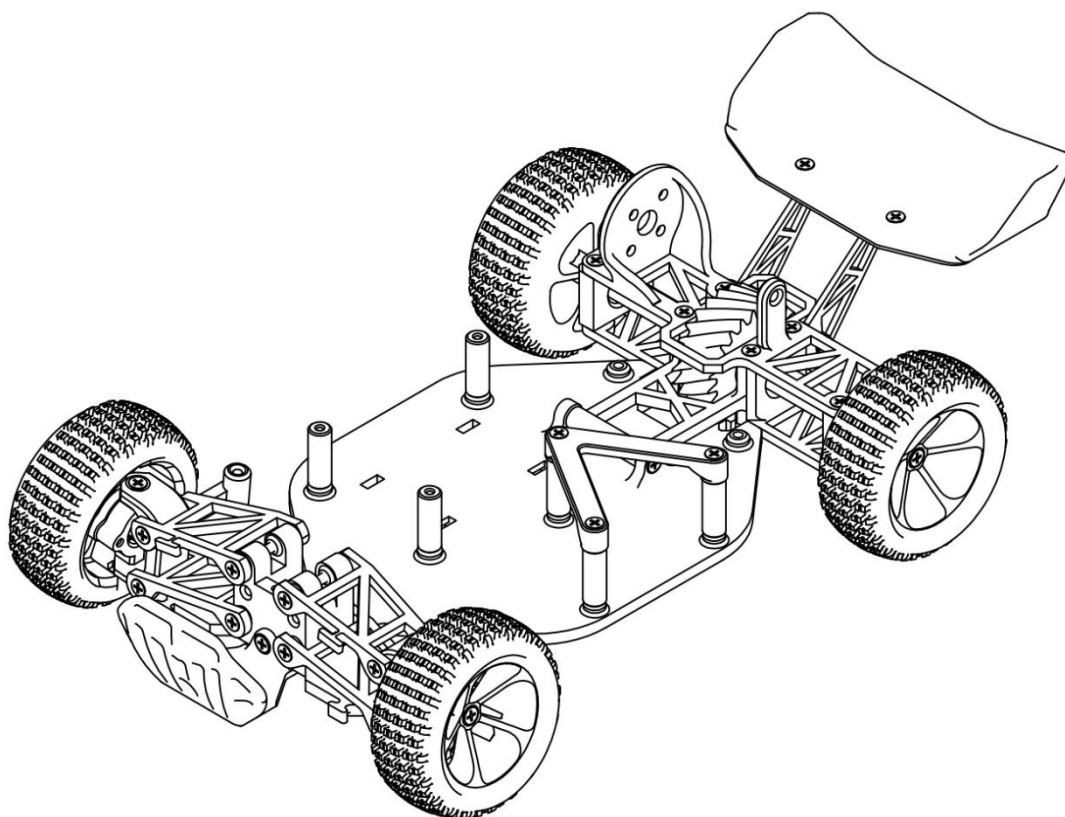
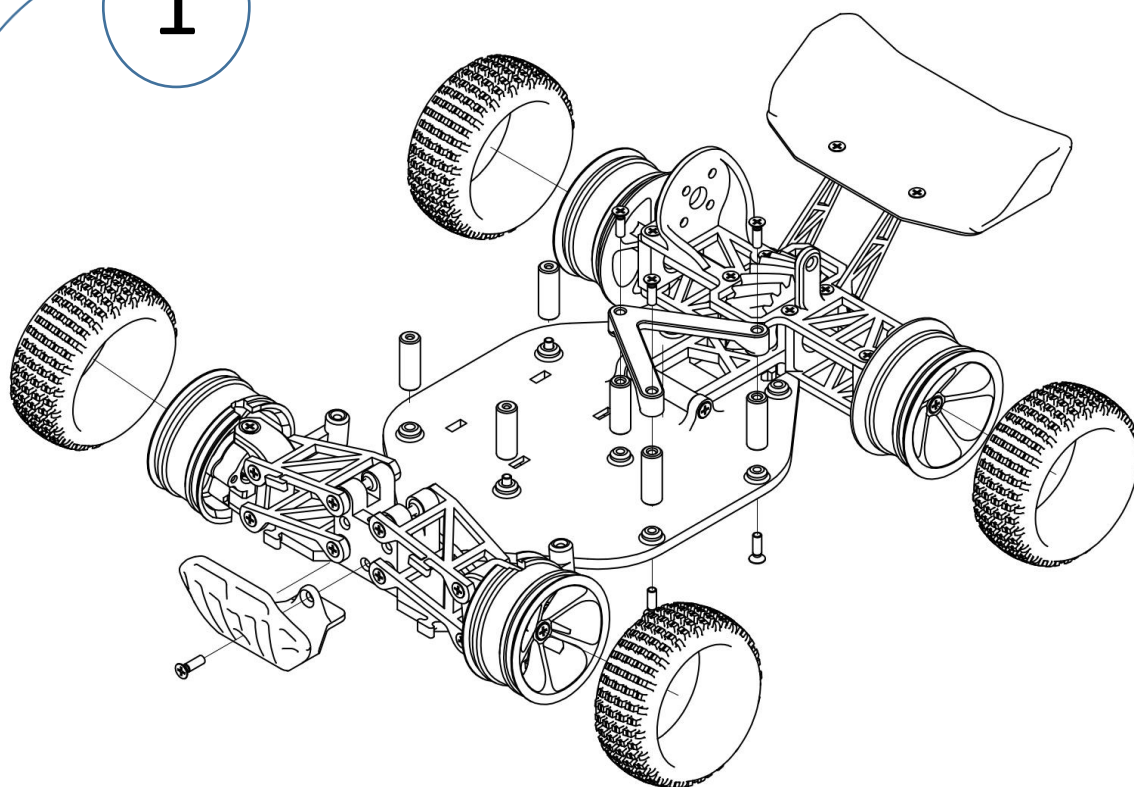
Printed parts list:

- BatteryColumn x3
- ElectronicsColumn x3
- ElectronicsMount
- FrontBumper (1 or 2)
- SteeringLink x2
- SteeringLever
- PinionGear

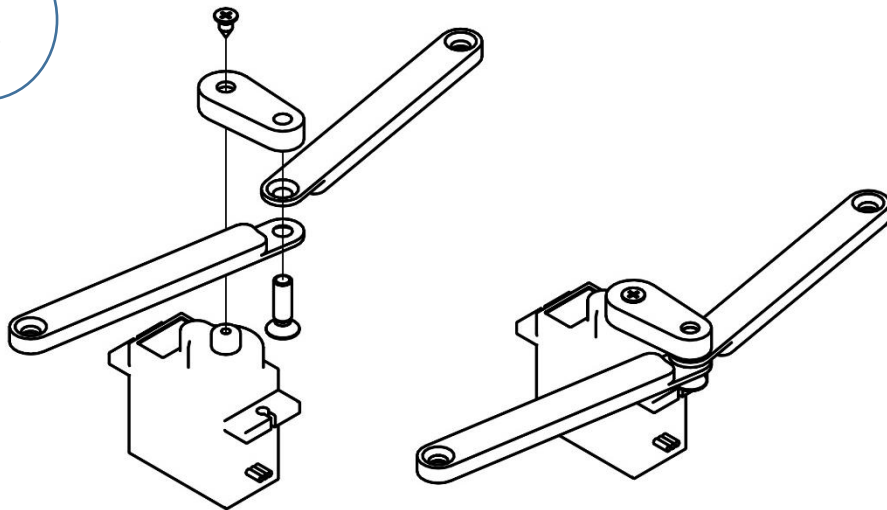
Non printed parts list

- M3x10 screws
- Offroad A959 Tyres x4
- Sg90 servo + servo screws
- 1000 kV A2212 BL motor + mounting screws

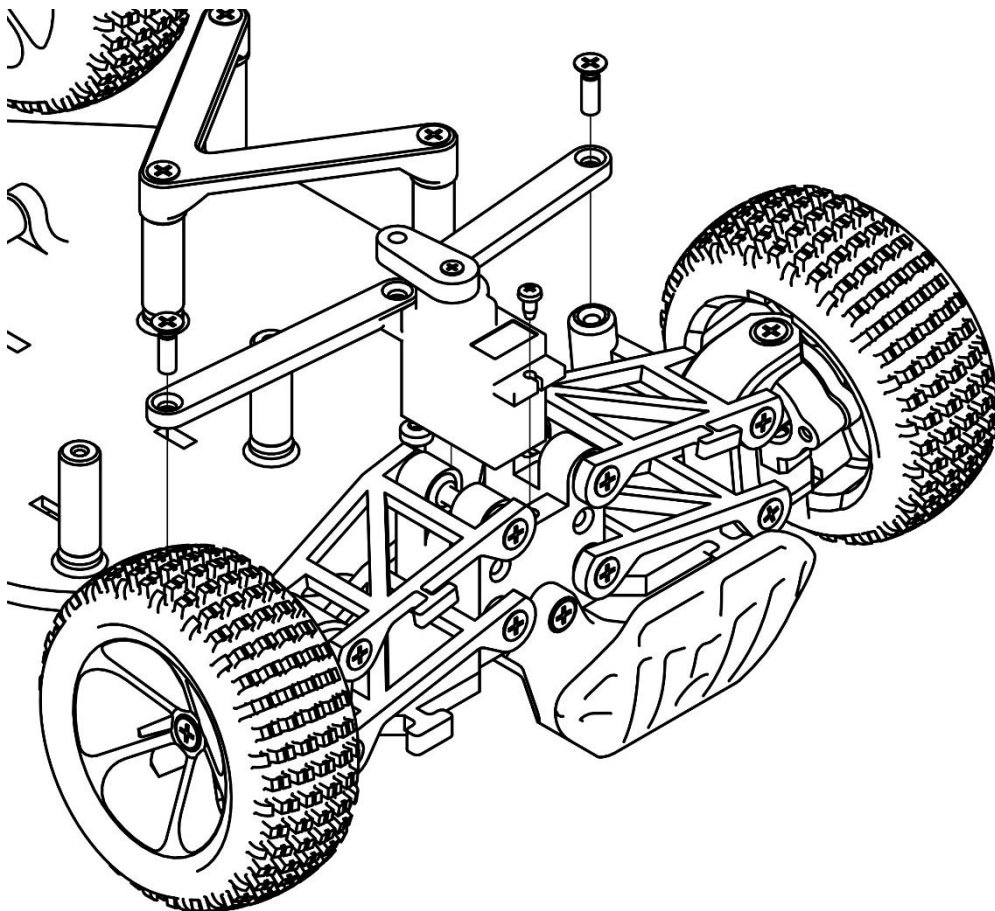
1



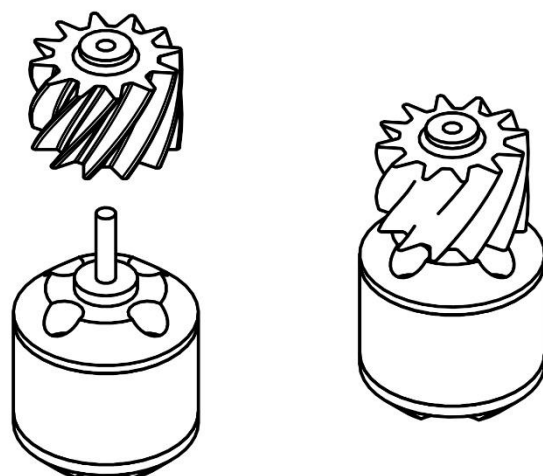
2



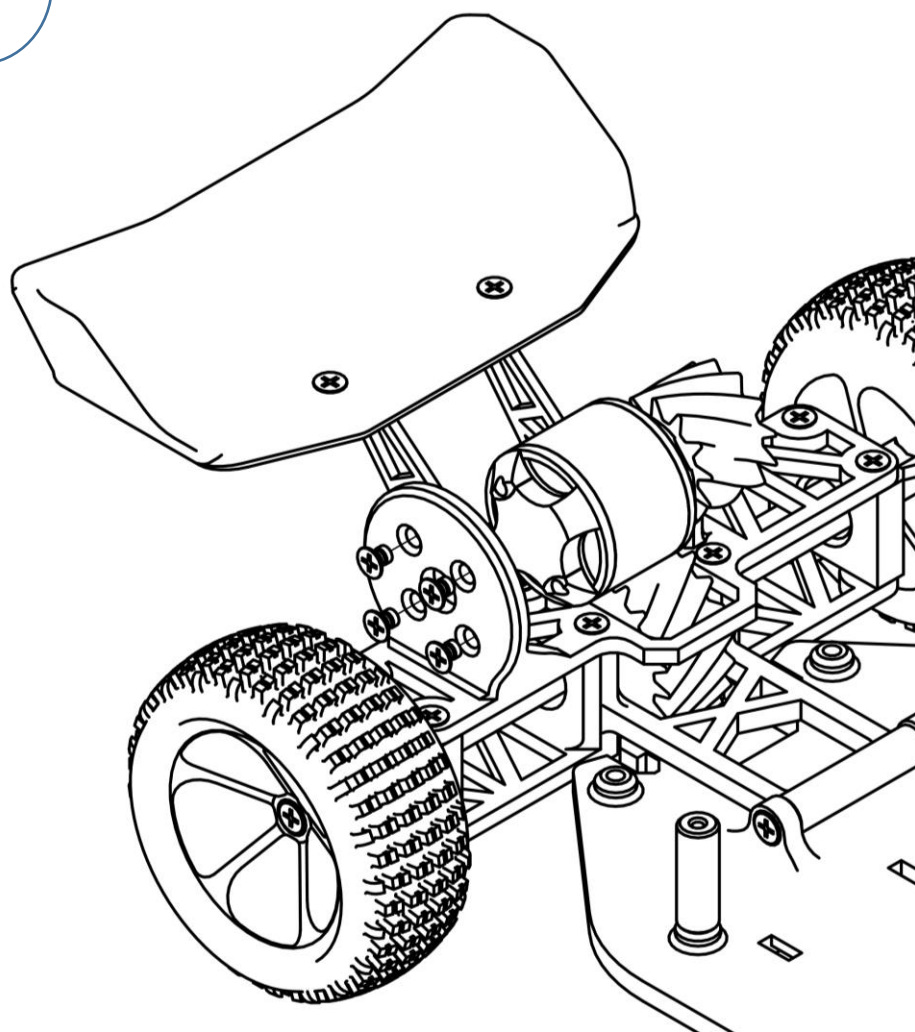
3



4



5



Final Assembly

