

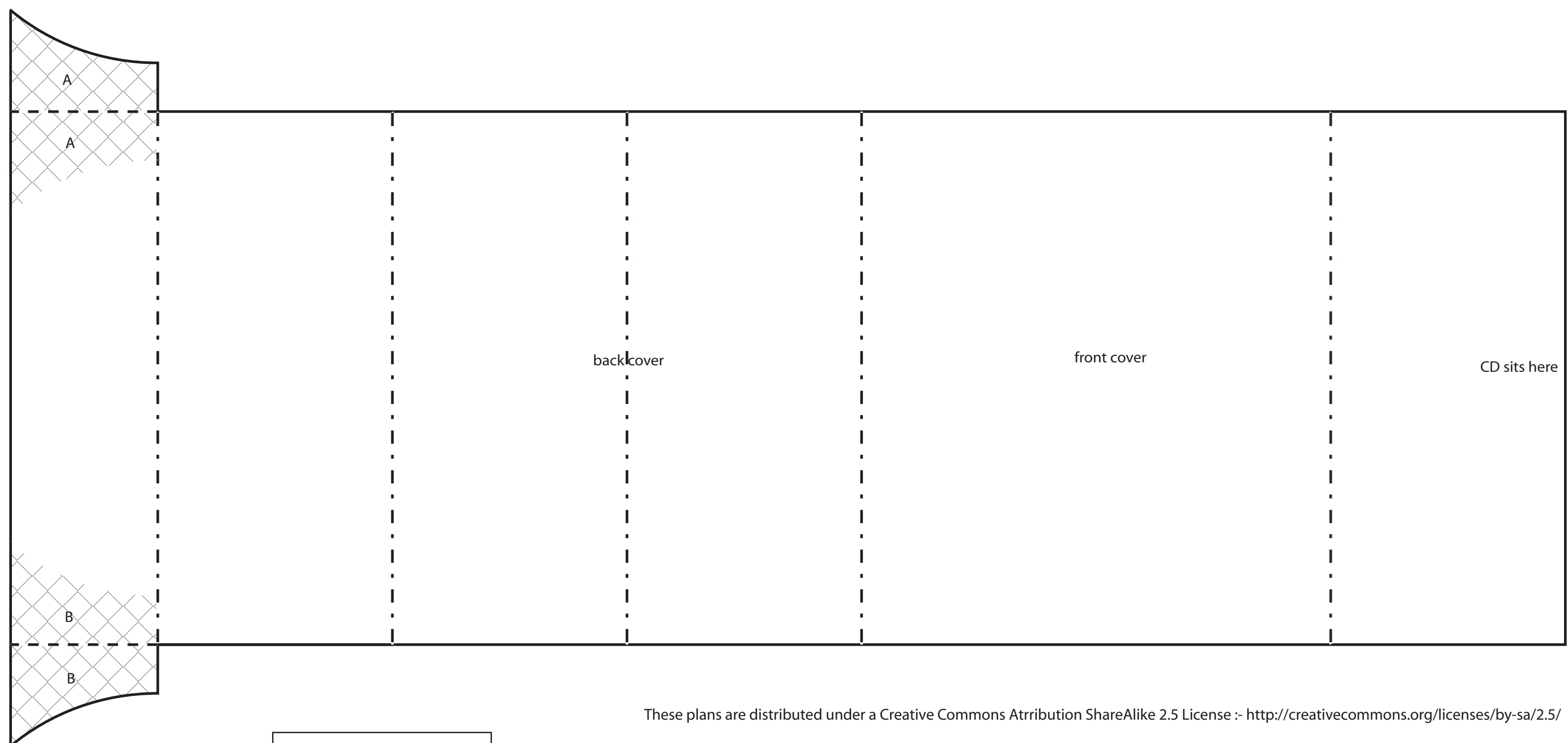
OpenCDCase I - 19/05/06 by zero-waste design

Parts:
1x Sheet A3 card, ~130gsm, printed with artwork

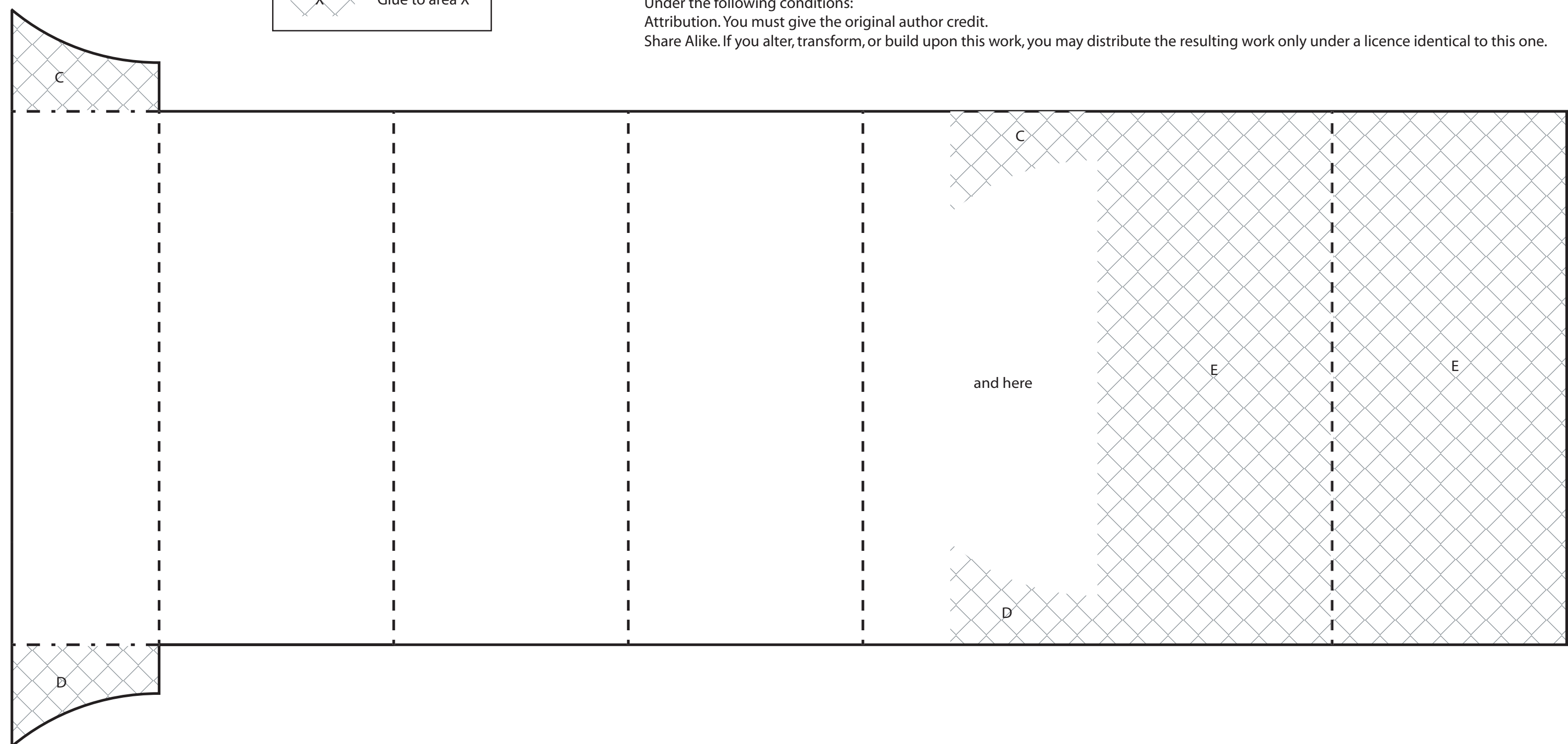
Tools:
1x craft knife or guillotine
Good glue, eg. UHU
1x scoring tool
1x steel rule

Production:
Cut, score and glue as directed.
Allow to dry thoroughly under compression.

Printed side:



Reverse side:



These plans are distributed under a Creative Commons Attribution ShareAlike 2.5 License :- <http://creativecommons.org/licenses/by-sa/2.5/>

You are free:

- * to copy, distribute, display, and perform the work
- * to make derivative works
- * to make commercial use of the work

Under the following conditions:

Attribution. You must give the original author credit.

Share Alike. If you alter, transform, or build upon this work, you may distribute the resulting work only under a licence identical to this one.