



# Afrofuturism + Mathematics Examples

## Portals

one part of the design is illustrative of completing a road into another space, so that it becomes a continuous path for movement throughout the complex this works with Tera's "radio" ideas and the idea of moving around a large track, and Susan's first drawings



### Dog Ear the Site



MIT Press 2018 42



Recreated patterns from elements in the complex. Still as a 3D object across a continuous surface, precisely this is just done by chop and sampling our ground pattern details

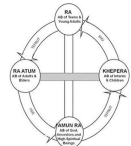


personalized to preserve game, so perhaps something very basic by a kids eye view (look through holes) is dog about on big kids' basketball court, etc.



## Cosmogram

the cosmogram includes all ages visually resembles our initial idea of the site Cosmograms show the flow between worlds and have portals of transition between them



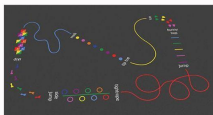
movable, reconfigurable platforms these are the shapes from which "open/closed" are thought



these are extra octagonal



Mutation introduces the game (as in first at 12 patterns, etc) and has participatory open spaces. Conceptually, what is there that you didn't imagine?



as the overall path is linear but with "wobblers" throughout it that the kids will get to know best, but can perhaps show each other



the photograph is illustrative of water boundaries, how they get from place to place to play Flying Colors & Storyboard https://www.youtube.com/watch?v=pmH1C0R07U

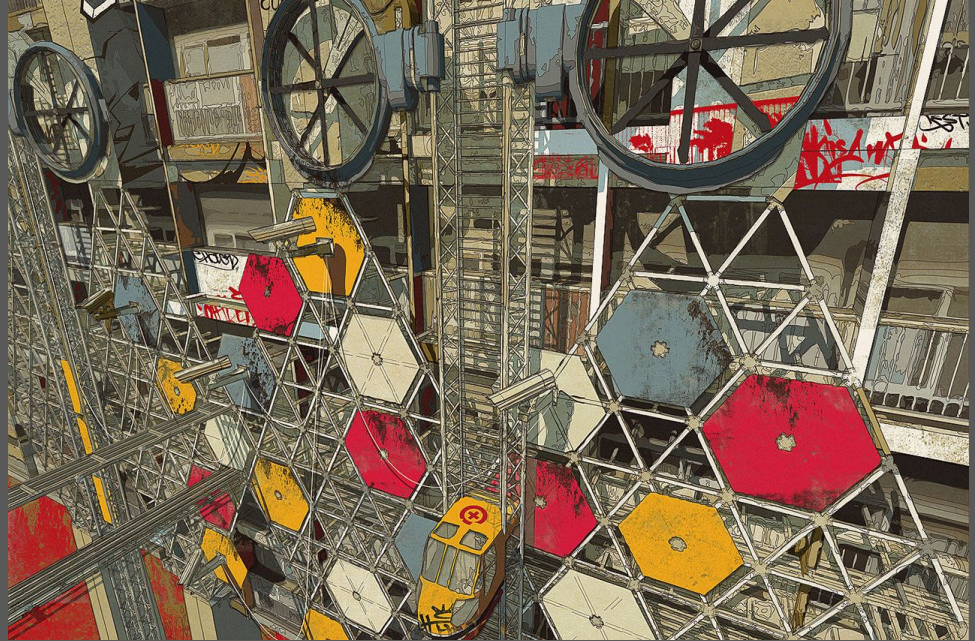
## Play Courts



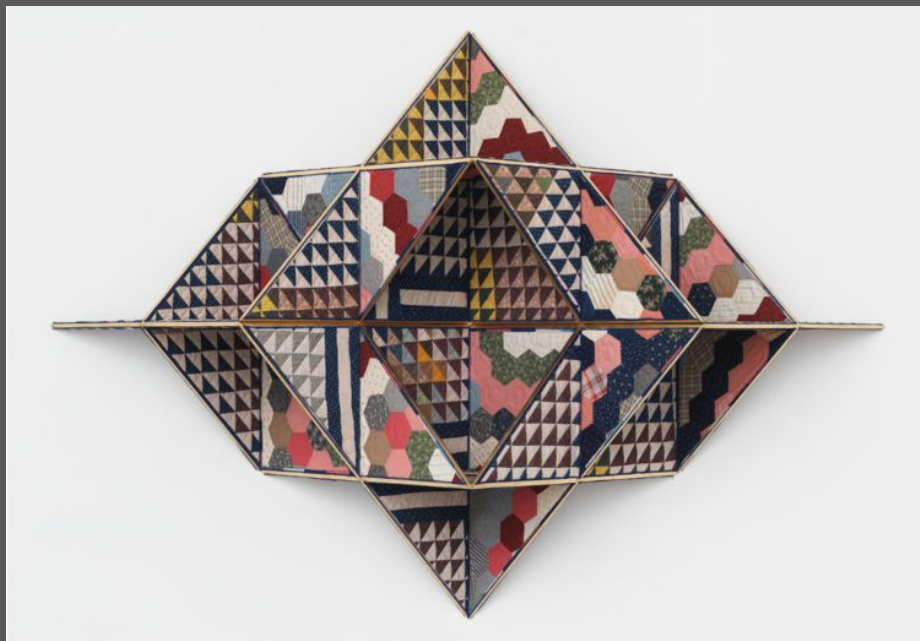
Not every flying hero wears a cape—  
Michael Jordan

**OX4D Plays**

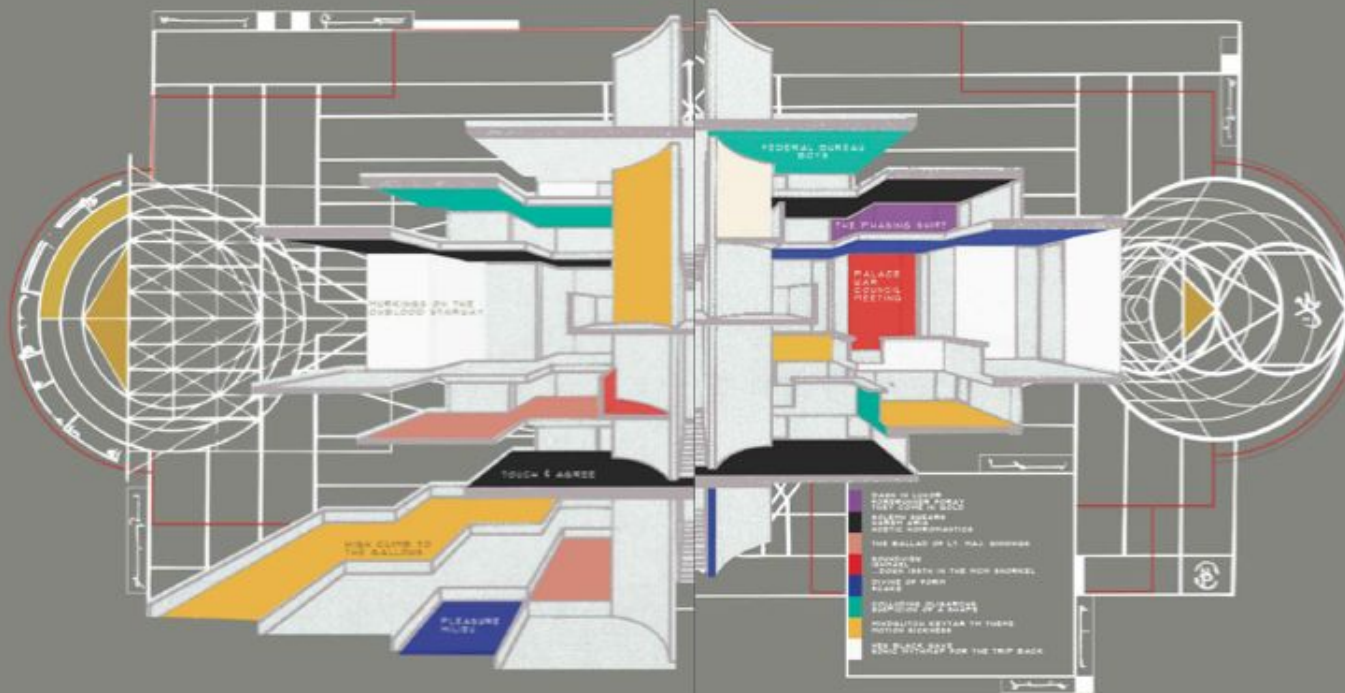




**Olalekan Jeyifous**



**Sanford Biggers**



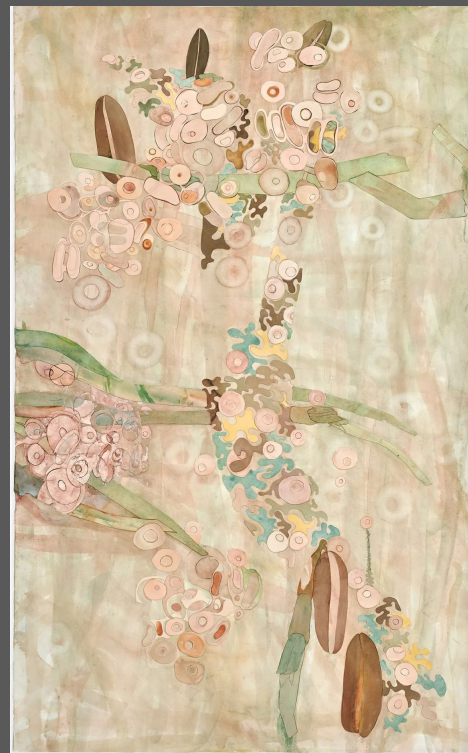
LENE MAJESTY A PALACEERING THE TRUE  
 A NEXT BOMB ACTION FROM SHABAZZ  
 PALACES PRODUCED BY KNIFE KNIGHTS  
 A SHADOW GOVT STANDBY FACILITY OF  
 PHANTASY RECORDED ON THE CHESTAH  
 WAVES AT PROTECT AND EXALT LARSA  
 A BLACK SPACE DOWN HERE AT THE TOP  
 WAR HOMES JOYOUS RAISED BY THEM OF  
 CONSTELLATORY RANKING VESTH ON  
 DOWN HIGHER PIVED IN PUNYALPUMH  
 BY BLOOD THE PHIBINGS CONTAINED  
 HEREIN DON ARTWORKS SHIPPED IN  
 REACTION AND PARALLEL BY NEP SONU  
 THE PUCK 16TH BC CHAMP/HAB/MS  
 OCES,TT,B,TH AN SO ON.

# Shabazz Palaces



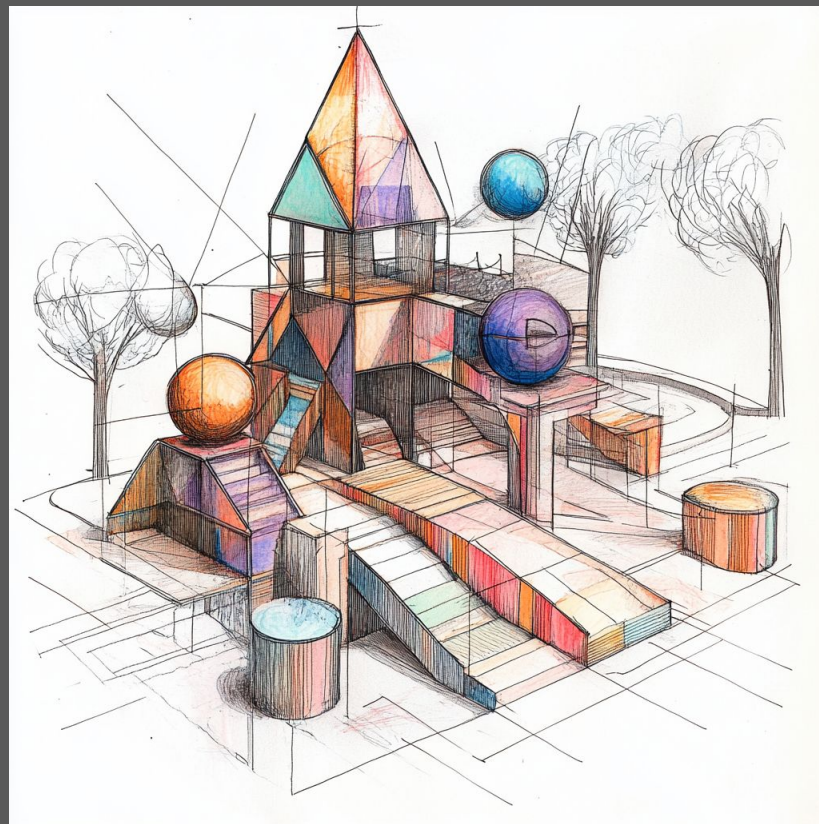


**Wangechi Mutu**



**Ellen Gallagher**





**Nettrice Gaskins**