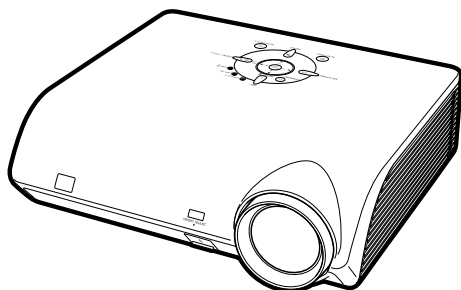


SHARP**SERVICE MANUAL**

SX5Q3XGMB70XA

**MULTIMEDIA-PROJECTOR****MODEL XG-MB70X A**

In the interests of user-safety (Required by safety regulations in some countries) the set should be restored to its original condition and only parts identical to those specified should be used.

OUTLINE

This Service Manual covers only different points from Model XG-MB70X. For other technical points, refer to the XG-MB70X Service Manual.

CONTENTS

	Page
● SPECIFICATIONS	2
● A COMPARISON TABLE WITH THE UNIT OF XG-MB70X A	3
● IMPORTANT SERVICE SAFETY NOTES (FOR USA)	4
● NOTE TO SERVICE PERSONNEL	5
● BALLAST UNIT OUTPUT POWER (LAMP OUTPUT) ADJUSTMENT	9
● TROUBLESHOOTING TABLE	10
● DESCRIPTION OF SCHEMATIC DIAGRAM	13
● SCHEMATIC DIAGRAM	14
● PRINTED WIRING BOARD ASSEMBLIES	20
● PARTS LIST	24
● PACKING OF THE SET	34

SHARP CORPORATION

This document has been published to be used for after sales service only.
The contents are subject to change without notice.

SPECIFICATIONS

Product type	Multimedia Projector
Model	XG-MB70X
Video system	NTSC3.58/NTSC4.43/PAL/PAL-M/PAL-N/PAL-60/SECAM/ DTV480I/DTV480P/DTV540P/DTV576I/DTV576P/DTV720P/DTV1035I/DTV1080I
Display method	Single Chip Digital Micromirror Device™ (DMD™) by Texas Instruments
DMD panel	Panel size: 0.7" No. of dots: 786,432 dots (1,024 [H] X 768 [V])
Lens	1.5 X electric zoom / focus lens, F2.0–2.5, f = 21.3–31.6 mm
Projection lamp	275 W DC lamp
Component input (INPUT 1/2)/ output (OUTPUT) signal	15-pin mini D-sub connector Y: 1.0 Vp-p, sync negative, 75 Ω terminated PB: 0.7 Vp-p, 75 Ω terminated PR: 0.7 Vp-p, 75 Ω terminated
Horizontal resolution	750 TV lines (DTV720P)
Computer RGB input (INPUT 1/2)/ output (OUTPUT) signal	15-pin mini D-sub connector RGB separate/sync on green type analog input: 0–0.7 Vp-p, positive, 75 Ω terminated HORIZONTAL SYNC. SIGNAL: TTL level (positive/negative) VERTICAL SYNC. SIGNAL: Same as above
Video input signal (INPUT 3)	RCA connector: VIDEO, composite video, 1.0 Vp-p, sync negative, 75 Ω terminated
S-video input signal (INPUT 4)	4-pin mini DIN connector Y (luminance signal): 1.0 Vp-p, sync negative, 75 Ω terminated C (chrominance signal): Burst 0.286 Vp-p, 75 Ω terminated
Audio input signal	ø3.5 mm minijack: AUDIO, 0.5 Vrms, more than 22 kΩ (stereo)
USB terminal	4-pin B-type USB female connector
RS-232C terminal	9-pin mini DIN connector
LAN terminal	8-pin RJ-45 modular connector
Pixel clock	12–108 MHz
Vertical frequency	43–85 Hz
Horizontal frequency	15–70 kHz
Audio output	2.0 W (monaural)
Speaker system	4.0 cm X 2.85 cm oval X1
Rated voltage	AC 100–240 V
Input current	3.9 A
Rated frequency	50/60 Hz
Power consumption	370 W (Standard mode)/320 W (Eco mode) with AC 100 V 350 W (Standard mode)/300 W (Eco mode) with AC 240 V
Power consumption (standby)	6 W (AC 100 V) – 8 W (AC 240 V)
Heat dissipation	1,390 BTU/hour (Standard mode)/1,200 BTU/hour (Eco mode) with AC 100 V 1,315 BTU/hour (Standard mode)/1,130 BTU/hour (Eco mode) with AC 240 V
Operating temperature	41°F to 104°F (+5°C to +40°C)
Storage temperature	–4°F to 140°F (–20°C to +60°C)
Cabinet	Plastic
I/R carrier frequency	38 kHz
Dimensions (approx.)	12 ⁷ / ₃₂ " X 3 ³³ / ₆₄ " X 11 ⁷ / ₆₄ " (310 (W) X 89 (H) X 282 (D) mm) (main body only) 12 ⁷ / ₃₂ " X 4 ⁷ / ₆₄ " X 11 ⁵ / ₁₆ " (310 (W) X 104 (H) X 287 (D) mm) (including adjustment foot and projecting parts)
Weight (approx.)	9.1 lbs. (4.1 kg)
Replacement parts	Lamp unit (Lamp/cage module) (AN-MB70LP), Remote control (RRMCGA313WJSA), Power cord for U.S., Canada, etc. (QACCCA007WJPZ), Power cord for Europe, except U.K. (QACCA011WJPZ), Power cord for U.K., Hong Kong and Singapore (QACCA036WJPZ), Power cord for Australia, New Zealand and Oceania (QACCLA018WJPZ), RGB cable (QCNWGA045WJPZ), USB cable (QCNWGA014WJPZ), Storage case (GCASNA014WJSA), Lens cap (RCAPHA021WJSA), Projector manual and technical reference CD-ROM (UDSKAA072WJZZ), "QUICK GUIDE" label (TLABZA717WJZZ), Operation manual (TINS-C177WJZZ)

As a part of policy of continuous improvement, SHARP reserves the right to make design and specification changes for product improvement without prior notice. The performance specification figures indicated are nominal values of production units. There may be some deviations from these values in individual units.

A COMPARISON TABLE WITH THE UNIT OF XG-MB70X A

	XG-MB70X			XG-MB70X A		
Ref. No.	Parts No.	Change	★	Parts No.	Description	Code
	DUNTKC612WEF0	→	J	DUNTKC612WEF5	MAIN Unit	CU
	DUNTKC613WEF0		J	←	FORMATTER Unit	CK
	DUNTKC615WEF0	→	J	DUNTKC615WEF5	FRONT R/C Unit	AN
	DUNTKC681WEF0	→	J	DUNTKC681WEF5	REAR R/C Unit	AN
	RDENCA082WJZZ or RDENCA118WJZZ	→	J	DUNTKD556WEF1	POWER SUPPLY Unit	BR
	RDENCA088WJZZ	→	J	DSETUD496FMF2	BALLAST POWER Unit	
			–	DUNTKD496WEF2	BALLAST Unit When you exchange a ballast unit (DUNTKD496WEF2), please order a ballast power supply unit (DSETUD496FMF2).	–
			J	DUNTKD497FMF2	BALLAST Control Unit	
	RUNTKA090WJZZ		J	←	CMOS CAMERA Unit	BS
	RUNTKA091WJZZ		J	←	PHOTO SENSOR Unit	AZ

IMPORTANT SERVICE SAFETY NOTES (for USA)

- Service work should be performed only by qualified service technicians who are thoroughly familiar with all safety checks and servicing guidelines as follows:

WARNING

1. For continued safety, no modification of any circuit should be attempted.
2. Disconnect AC power before servicing.

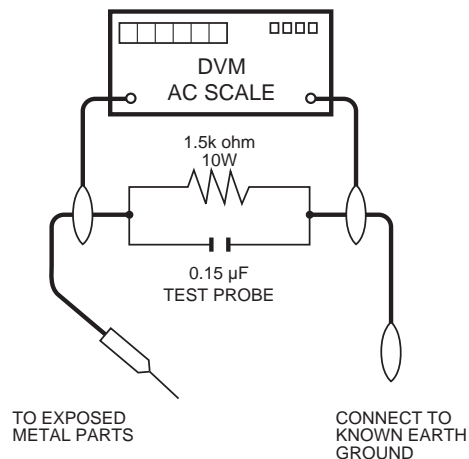
CAUTION: FOR CONTINUED PROTECTION AGAINST RISK OF FIRE REPLACE ONLY WITH SAME TYPE F701 (6.3A, AC250V)

BEFORE RETURNING THE PROJECTOR: (Fire & Shock Hazard)

Before returning the projector to the user, perform the following safety checks:

1. Inspect lead wires are not pinched between the chassis and other metal parts of the projector.
2. Inspect all protective devices such as non-metallic control knobs, insulating materials, cabinet backs, adjustment and compartment covers or shields, isolation resistor-capacity networks, mechanical insulators, etc.
3. To be sure that no shock hazard exists, check for current leakage in the following manner:
 - Plug the AC cord directly into a 120-volt AC outlet, (Do not use an isolation transformer for this test).
 - Using two clip leads, connect a 1.5k ohm, 10 watt resistor paralleled by a 0.15 μ F capacitor in parallel between all exposed metal cabinet parts and earth ground.

- Use an AC voltmeter with sensitivity of 5000 ohm per volt., or higher, sensitivity to measure the AC voltage drop across the resistor (See Diagram).
- All checks must be repeated with the AC plug connection reversed. (If necessary, a non-polarized adapter plug must be used only for the purpose of completing these checks.) Any reading of 0.3 volts RMS (this corresponds to 0.2 milliamp. AC.) or more is excessive and indicates a potential shock hazard which must be corrected before returning the unit to the owner.



SAFETY NOTICE

Many electrical and mechanical parts in DMD™ Projector have special safety-related characteristics. These characteristics are often not evident from visual inspection, nor can protection afforded by them be necessarily increased by using replacement components rated for higher voltage, wattage, etc.

Replacement parts which have these special safety characteristics are identified in this manual; electrical components having such features are identified by “ \triangle ” and shaded areas in the Replacement Parts Lists and Schematic Diagrams. For continued protection, replacement parts must be identical to those used in the original circuit. The use of a substitute replacement parts which do not have the same safety characteristics as the factory recommended replacement parts shown in this service manual, may create shock, fire or other hazards.

WARNING: The bimetallic component has the primary conductive side exposed. Be very careful in handling this component when the power is on.

AVIS POUR LA SECURITE

De nombreuses pièces, électriques et mécaniques, dans les projecteur à DMD™ présentent des caractéristiques spéciales relatives à la sécurité, qui ne sont souvent pas évidentes à vue.

Le degré de protection ne peut pas être nécessairement augmentée en utilisant des pièces de remplacement étalonnées pour haute tension, puissance, etc.

Les pièces de remplacement qui présentent ces caractéristiques sont identifiées dans ce manuel; les pièces électriques qui présentent ces particularités sont identifiées par la marque “ \triangle ” et hachurées dans la liste des pièces de remplacement et les diagrammes schématiques. Pour assurer la protection, ces pièces doivent être identiques à celles utilisées dans le circuit d'origine. L'utilisation de pièces qui n'ont pas les mêmes caractéristiques que les pièces recommandées par l'usine, indiquées dans ce manuel, peut provoquer des électrocutions, incendies ou autres accidents.

AVERTISSEMENT: La composante bimétallique dispose du conducteur primaire dénudé. Faire attention lors de la manipulation de cette composante sous tension.

NOTE TO SERVICE PERSONNEL

UV-RADIATION PRECAUTION

The light source, UHP lamp, in the LCD projector emits small amounts of UV-Radiation.

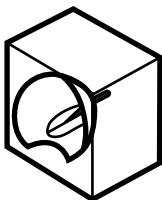
AVOID DIRECT EYE AND SKIN EXPOSURE.

To ensure safety please adhere to the following:

1. Be sure to wear sun-glasses when servicing the projector with the lamp turned "on" and the top enclosure removed.



2. Do not operate the lamp outside of the lamp housing.



3. Do not operate for more than 2 hours with the enclosure removed.



UV-Radiation and Medium Pressure Lamp Precautions

1. Be sure to disconnect the AC plug when replacing the lamp.
2. Allow one hour for the unit to cool down before servicing.
3. Replace only with same type lamp. Type AN-MB70LP rated 275W.
4. The lamp emits small amounts of UV-Radiation, avoid direct-eye contact.
5. The medium pressure lamp involves a risk of explosion. Be sure to follow installation instructions described below and handle the lamp with care.

NOTE POUR LE PERSONNEL D'ENTRETIEN

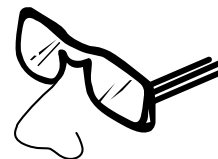
PRECAUTION POUR LES RADIATIONS UV

La source de lumière, la lampe UHP, dans le projecteur LCD émet de petites quantités de radiation UV.

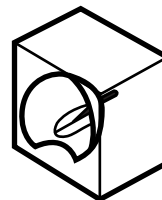
EVITEZ TOUTE EXPOSITION DIRECTE DES YEUX ET DE LA PEAU.

Pour votre sécurité, nous vous prions de respecter les points suivants:

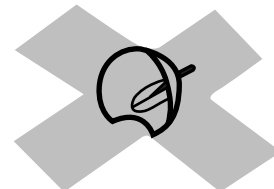
1. Toujours porter des lunettes de soleil lors d'un entretien du projecteur avec la lampe allumée et le haut du coffret retiré.



2. Ne pas faire fonctionner la lampe à l'extérieur du boîtier de lampe.



3. Ne pas faire fonctionner plus de 2 heures avec le coffret retiré.



Précautions pour les radiations UV et la lampe moyenne pression

1. Toujours débrancher la fiche AC lors du remplacement de la lampe.
2. Laisser l'unité refroidir pendant une heure avant de procéder à l'entretien.
3. Ne remplacer qu'avec une lampe du même type. Type AN-MB70LP, caractéristique 275W.
4. La lampe émet de petites quantités de radiation UV-éviter tout contact direct avec les yeux.
5. La lampe moyenne pression implique un risque d'explosion. Toujours suivre les instructions d'installation décrites ci-dessous et manipuler la lampe avec soin.

UV-RADIATION PRECAUTION (Continued)

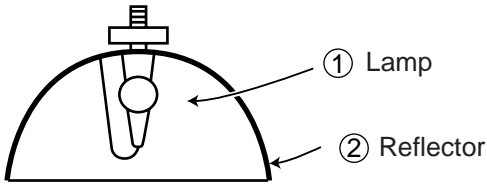
■ Lamp Replacement

Note:

Since the lamp reaches a very high temperature during units operation replacement of the lamp should be done at least one hour after the power has been turned off. (to allow the lamp to cool off.)

Installing the new lamp, make sure not to touch the lamp (bulb) replace the lamp by holding its reflector ②.

[Use original replacement only.]



DANGER ! — Never turn the power on without the lamp to avoid electric-shock or damage of the devices since the stabilizer generates high voltages at its start.

Since small amounts of UV-radiation are emitted from an opening between the exhaust fans, it is recommended to place the cap of the optional lens on the opening during servicing to avoid eye and skin exposure.

PRECAUTION POUR LES RADIATIONS UV (Suite)

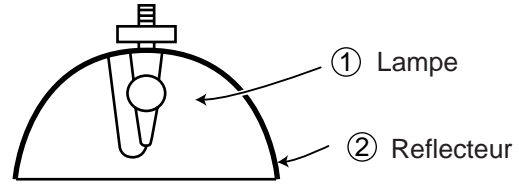
■ Remplacement de la lampe

Remarque:

Comme la lampe devient très chaude pendant le fonctionnement de l'unité, son remplacement ne doit être effectué au moins une heure après avoir coupé l'alimentation (pour permettre à la lampe de refroidir).

En installant la nouvelle lampe, s'assurer de ne pas toucher la lampe (ampoule). Remplacer la lampe en tenant son réflecteur ②.

[N'utiliser qu'un remplacement d'origine.]





DANGER ! — Ne jamais mettre sous tension sans la lampe pour éviter un choc électrique ou des dommages des appareils car le stabilisateur génère de hautes tensions à sa mise en route.

Comme de petites quantités de radiation UV sont émises par une ouverture entre les ventilateurs aspirants, il est recommandé de placer le capuchon de l'optique optionnelle sur l'ouverture pendant l'entretien pour éviter une exposition des yeux et la peau.

WARNING: High brightness light source, do not stare into the beam of light, or view directly. Be especially careful that children do not stare directly in to the beam of light.

WARNING: TO REDUCE THE RISK OF FIRE OR ELECTRIC SHOCK, DO NOT EXPOSE THIS UNIT TO MOISTURE OR WET LOCATIONS.

	CAUTION RISK OF ELECTRIC SHOCK. DO NOT REMOVE SCREWS EXCEPT SPECIFIED USER SERVICE SCREW.	
<p>CAUTION: TO REDUCE THE RISK OF ELECTRIC SHOCK, DO NOT REMOVE CABINET. NO USER-SERVICEABLE PARTS EXCEPT LAMP UNIT. REFER SERVICING TO QUALIFIED SERVICE PERSONNEL.</p>		




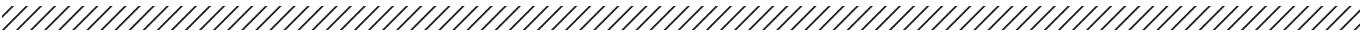
The lighting flash with arrowhead within a triangle is intended to tell the user that parts inside the product are risk of electric shock to persons.



The exclamation point within a triangle is intended to tell the user that important operating and servicing instructions are in the manual with the projector.



CAUTION
(POWER Unit)

For continued protection against a risk of fire, replace only with same type 6.3A, AC250V fuse. (F701)

AVERTISSEMENT: Source lumineuse de grande intensité. Ne pas fixer le faisceau lumineux ou le regarder directement. Veiller particulièrement à éviter que les enfants ne fixent directement le faisceau lumineux.

AVERTISSEMENT: AFIN D'EVITER TOUT RISQUE D'INCENDIE OU D'ELECTROCUTION, NE PAS PLACER CET APPAREIL DANS UN ENDROIT HUMIDE OU MOUILLE.

	ATTENTION RISQUE D'ÉLECTROCUTION. NE PAS ETIRER LES VIS À L'EXCEPTION DE LA VIS DE REPARATION UTILISATEUR SPECIFIEES	
<p>ATTENTION: POUR EVITER TOUT RISQUE D'ELECTROCUTION, NE PAS RETIRER LE CAPOT. AUCUNE DES PIECES INTERIEURES N'EST REPARABLE PAR L'UTILISATEUR, A L'EXCEPTION DE L'UNITE DE LAMPE. POUR TOUTE REPARATION, S'ADRESSER A UN TECHNICIEN D'ENTRETIEN QUALIFIE.</p>		



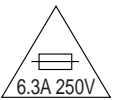
L'éclair terminé d'une flèche à l'intérieur d'un triangle indique à l'utilisateur que les pièces se trouvant dans l'appareil sont susceptibles de provoquer une décharge électrique.



Le point d'exclamation à l'intérieur d'un triangle indique à l'utilisateur que les instructions de fonctionnement et d'entretien sont détaillées dans les documents fournis avec le projecteur.

PRECAUTION
(Unité de PUTSSANCE)

Pour une protection continue contre un risques d'incendie, ne remplacer qu'avec un fusible 6.3A,AC250V du même type. (F701)



Precautions for using lead-free solder

1 Employing lead-free solder

"PWBs" of this model employs lead-free solder. The LF symbol indicates lead-free solder, and is attached on the PWBs and service manuals. The alphabetical character following LF shows the type of lead-free solder.

Example:



Sn-Ag-Cu

Indicates lead-free solder of tin, silver and copper.

2 Using lead-free wire solder

When fixing the PWB soldered with the lead-free solder, apply lead-free wire solder. Repairing with conventional lead wire solder may cause damage or accident due to cracks.

As the melting point of lead-free solder (Sn-Ag-Cu) is higher than the lead wire solder by 40°C, we recommend you to use a dedicated soldering bit, if you are not familiar with how to obtain lead-free wire solder or soldering bit, contact our service station or service branch in your area.

3 Soldering

As the melting point of lead-free solder (Sn-Ag-Cu) is about 220°C which is higher than the conventional lead solder by 40°C, and as it has poor solder wettability, you may be apt to keep the soldering bit in contact with the PWB for extended period of time. However, since the land may be peeled off or the maximum heat-resistance temperature of parts may be exceeded, remove the bit from the PWB as soon as you confirm the steady soldering condition.

Lead-free solder contains more tin, and the end of the soldering bit may be easily corroded. Make sure to turn on and off the power of the bit as required.

If a different type of solder stays on the tip of the soldering bit, it is alloyed with lead-free solder. Clean the bit after every use of it.

When the tip of the soldering bit is blackened during use, file it with steel wool or fine sandpaper.

Be careful when replacing parts with polarity indication on the PWB silk.

Lead-free wire solder for servicing

Part No.	★	Description	Code
ZHNDAi123250E	J	φ0.3mm 250g(1roll)	BL
ZHNDAi126500E	J	φ0.6mm 500g(1roll)	BK
ZHNDAi12801KE	J	φ1.0mm 1kg(1roll)	BM

BALLAST UNIT OUTPUT POWER (LAMP OUTPUT) ADJUSTMENT

1. List of adjustment-related parts

When the following parts have been replaced, adjust the ballast unit output power (lamp output).

	Parts Name	Ref. No.	Parts Code
1	Cement resistor	R922	RR-WZA015WJZZ
2	Control PWB	---	DUNTKD497FMF2
3	Ballast microprocessor (FLASH)	IC7707	RH-iXB384WJZZQ
3'	Ballast microprocessor (MASK)	IC7707	RH-iXB390WJZZQ
4	5V regulator	IC7704	VHiTA78L05F-1Y
5	PWM controller	IC7701	VHiM51995AF-1Y

2. Adjustment tools

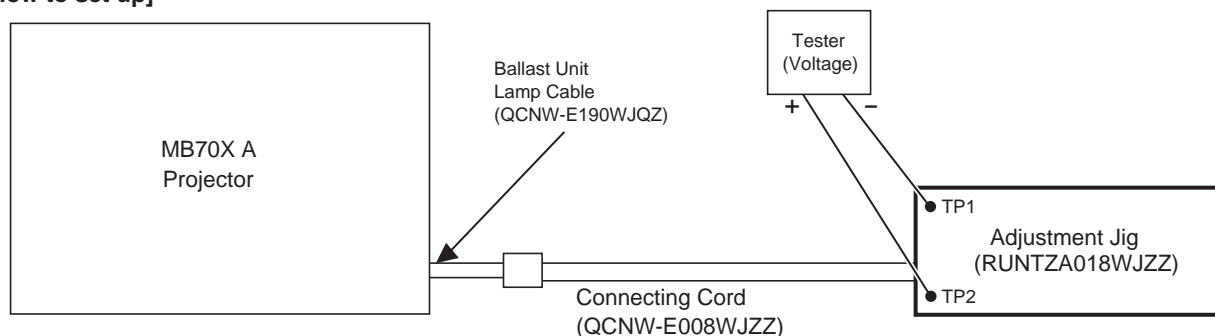
The following tools are required in order to adjust the ballast unit output power (lamp power).

	Parts Name	Parts Code	Maker
1	Adjustment jig (resistance load 25Ω)	RUNTZA018WJZZ	Asahi Tushin
2	Connecting cord (conversion cable)	QCNW-E008WJZZ	SMK

3. Adjusting the ballast unit output power (lamp power)

Take the following procedure to adjust the ballast unit output power (lamp power).

[How to set up]



[How to adjust]

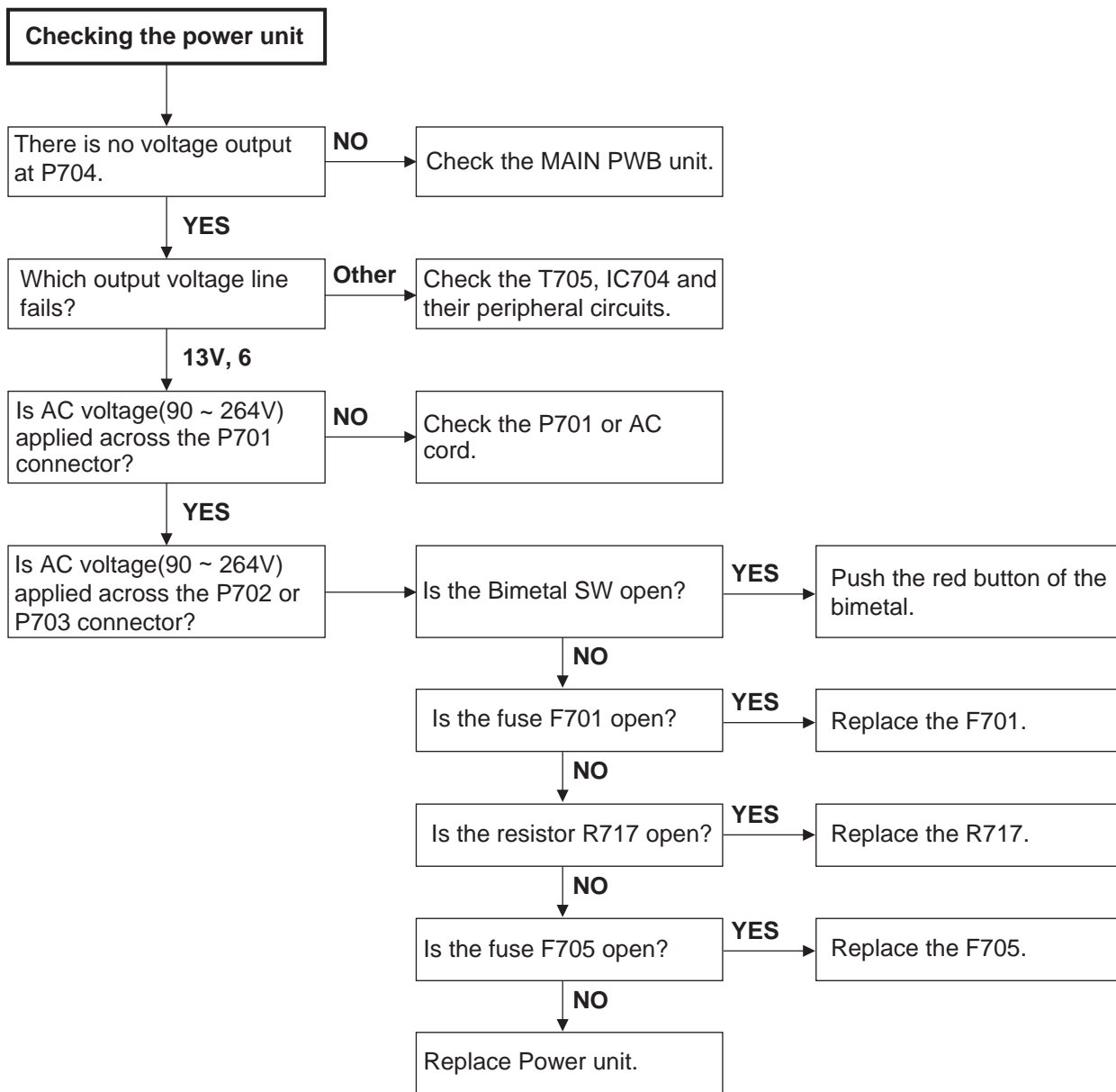
1. Disconnect the MB70X A projector's ballast unit lamp cable from the lamp. Connect the cable to the connecting cord (QCNW-E008WJZZ).
2. Connect the connecting cord (QCNW-E008WJZZ) to the adjustment jig (RUNTZA018WJZZ).
3. Hook up the tester's negative probe and positive probe to the TP1 and TP2, respectively, of the adjustment jig (RUNTZA018WJZZ).
4. Turn on the power of the MB70X A projector.
5. Warm up the projector for longer than 60 seconds.
6. Adjust the variable control (R7728) of the ballast control PWB (DUNTKD497FMF2) to achieve the tester reading of 83 ± 0.5 V.

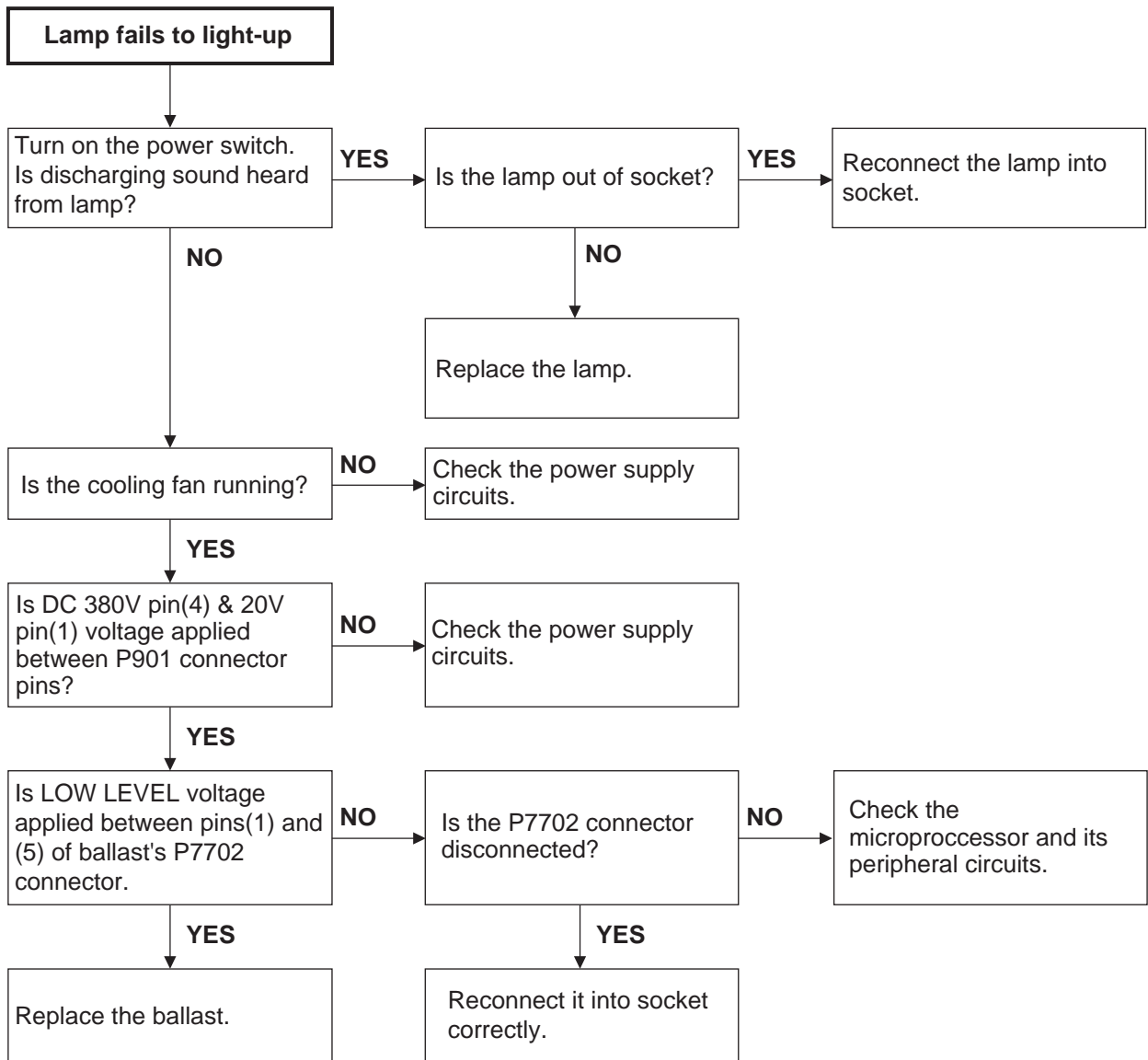
Specification: 83 ± 0.5 V

4. Precautions

- 1) Electric shock:
Be careful not to touch the adjustment jig's test points TP1 and TP2 during continuity because high voltage and large current are applied at them.
- 2) Heat hazard:
Keep in mind that the adjustment jig's resistance load is hot during continuity.
- 3) Lamp cable connection:
Make sure the lamp cable and the connecting cord (QCNW-E008WJZZ) are tightly connected. If they are poorly connected, smoke or fire may be caused due to an arc discharge.

TROUBLESHOOTING TABLE





DESCRIPTION OF SCHEMATIC DIAGRAM

VOLTAGE MEASUREMENT CONDITION:

1. Voltages at test points are measured at the supply voltage of AC 220V. Signals are fed by a color bar signal generator for servicing purpose and the above voltages are measured with a 20k ohm/V tester.

WAVEFORM MEASUREMENT CONDITION:

1. Waveforms at test points are observed at the supply voltage of AC 220V. Signals are fed by a color bar signal generator for servicing purpose.

INDICATION OF RESISTOR & CAPACITOR:

RESISTOR

1. The unit of resistance “ Ω ” is omitted.
(K=k Ω =1000 Ω , M=M Ω).
2. All resistors are $\pm 5\%$, unless otherwise noted.
(J= $\pm 5\%$, F= $\pm 1\%$, D= $\pm 0.5\%$)
3. All resistors are 1/10W, unless otherwise noted.
4. All resistors are Carbon type, unless otherwise noted.
 ©: Solid Ⓜ: Cement
 Ⓢ: Oxide Film Ⓣ: Special
 Ⓝ: Metal Coating

CAPACITOR

1. All capacitors are μF , unless otherwise noted.
(P=pF= $\mu\mu\text{F}$).
2. All capacitors are 50V, unless otherwise noted.
3. All capacitors are Ceramic type, unless otherwise noted.
 (ML): Mylar (TA): Tantalum
 (PF): Polypro Film (ST): Styrol


CAUTION:

This circuit diagram is original one, therefore there may be a slight difference from yours.

SAFETY NOTES:

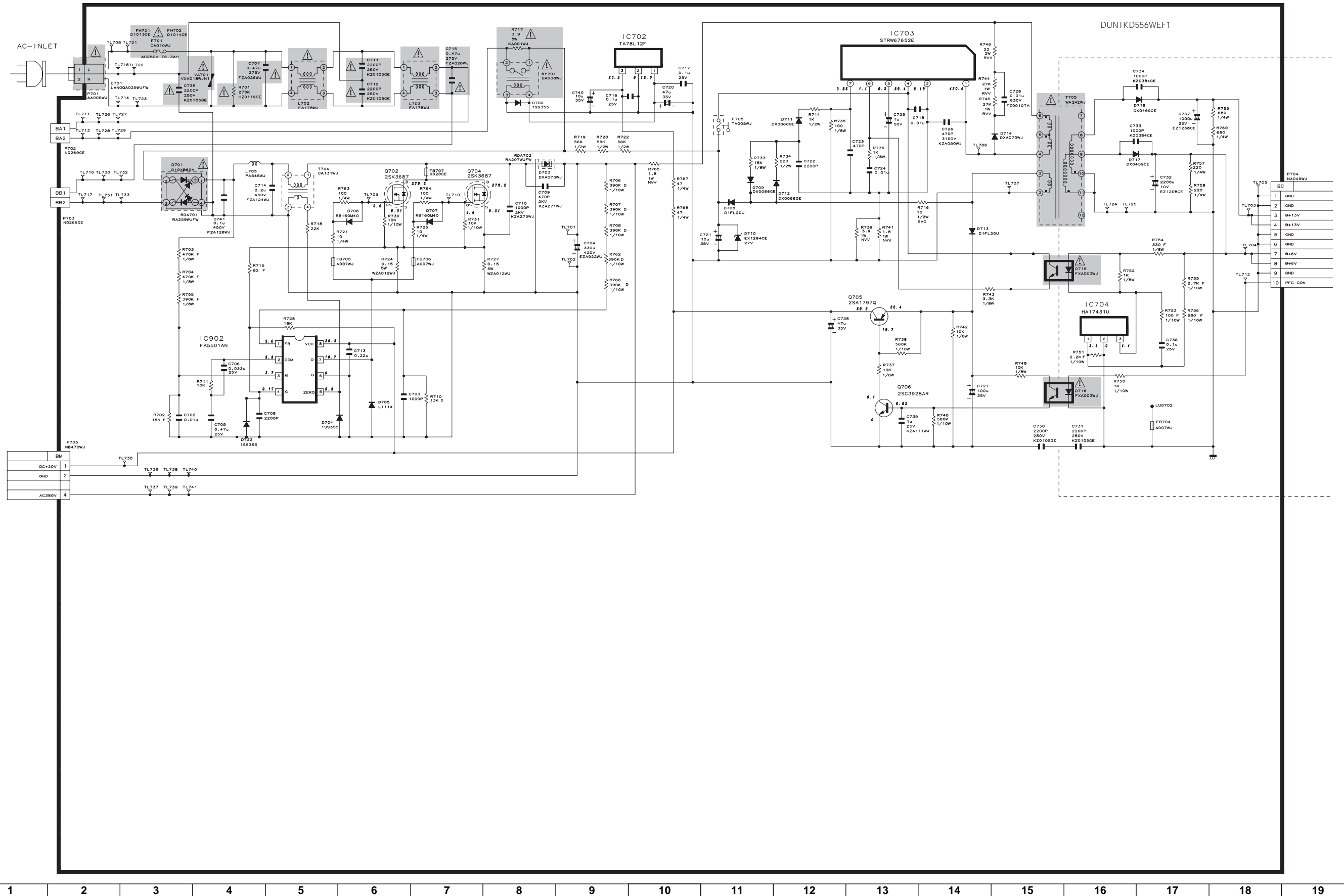
1. DISCONNECT THE AC PLUG FROM THE AC OUTLET BEFORE REPLACING PARTS.
2. SEMICONDUCTOR HEAT SINKS SHOULD BE REGARDED AS POTENTIAL SHOCK HAZARDS WHEN THE CHASSIS IS OPERATING.

IMPORTANT SAFETY NOTICE:

PARTS MARKED WITH “ \triangle ” () ARE IMPORTANT FOR MAINTAINING THE SAFETY OF THE SET. BE SURE TO REPLACE THESE PARTS WITH SPECIFIED ONES FOR MAINTAINING THE SAFETY AND PERFORMANCE OF THE SET.

SCHEMATIC DIAGRAM

POWER SUPPLY Unit



BM	
DC+20V	1
GND	2
AC380V	4

P704	NAD49WJ
BC	
1	GND
2	GND
3	B+13V
4	B+13V
5	GND
6	GND
7	B+6V
8	B+6V
9	GND
10	RFC CDN

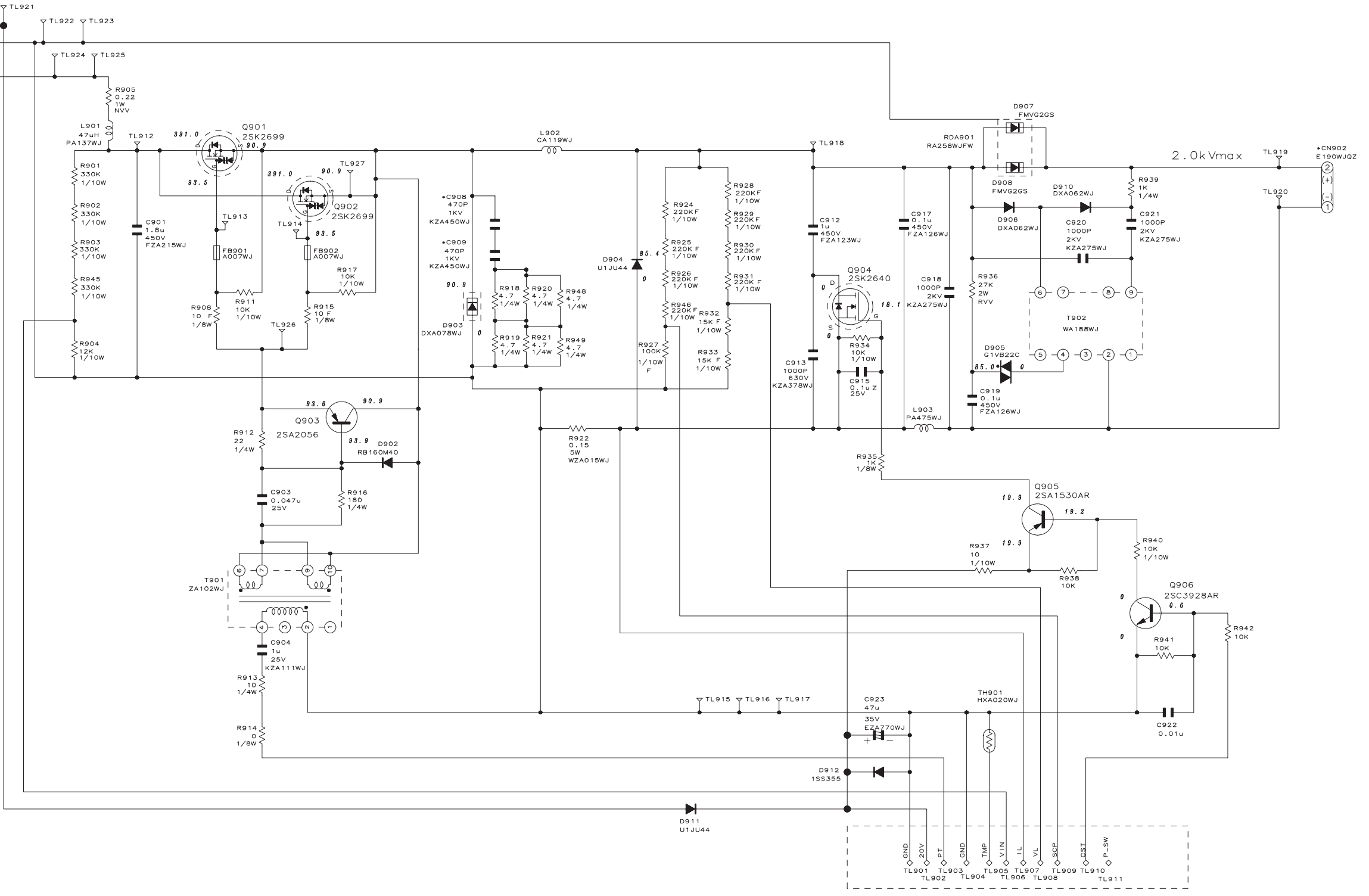
BALLAST Unit

BALLAST UNIT

DUNTKD496WEF2

H
G
F
E
D
C
B
A

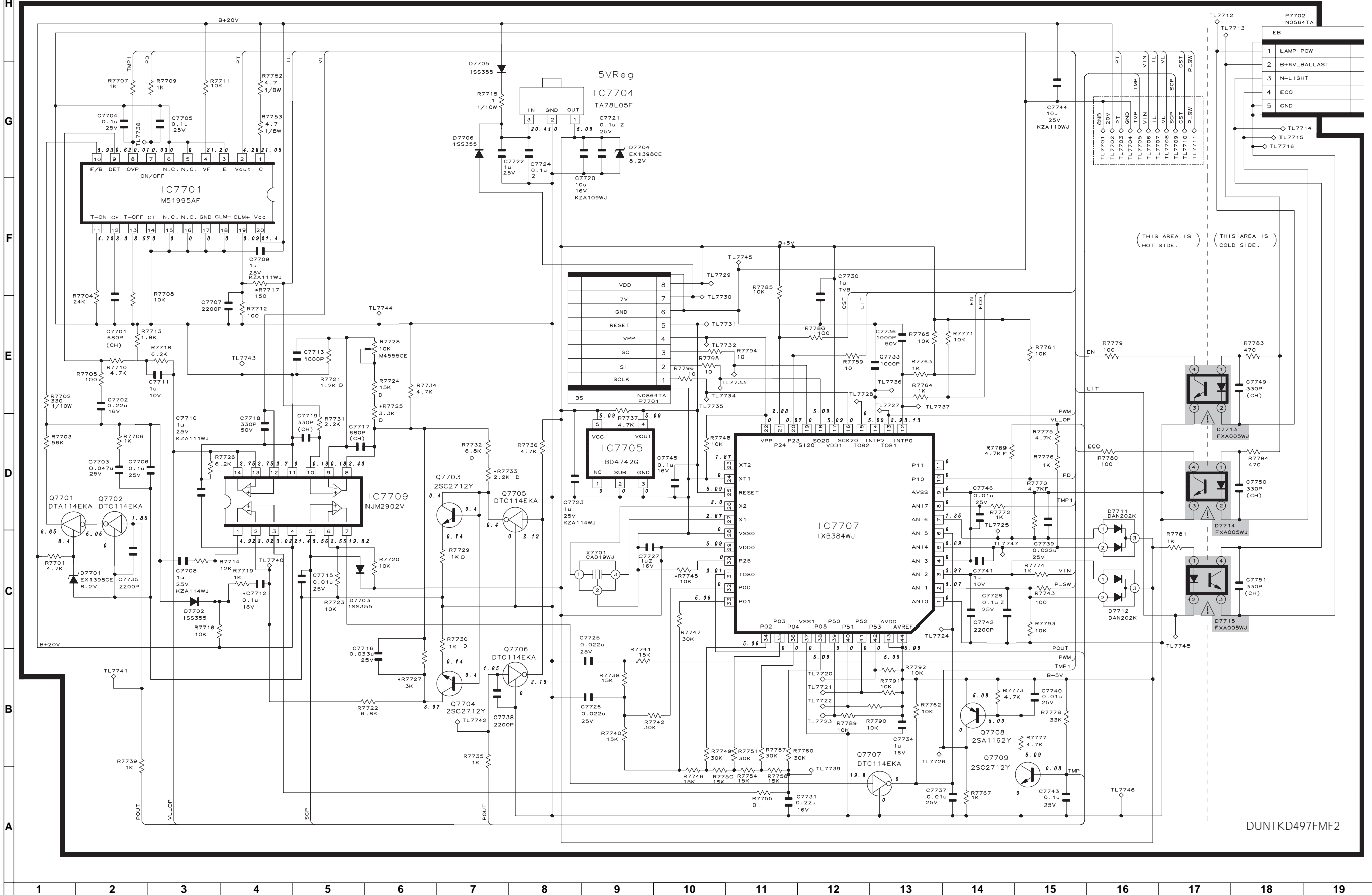
P901	NB470WJ
20V	1
GND	2
380V	4



1 2 3 4 5 6 7 8 9 10 11 12 13 14 15 16 17 18 19

BALLAST CONTROL Unit

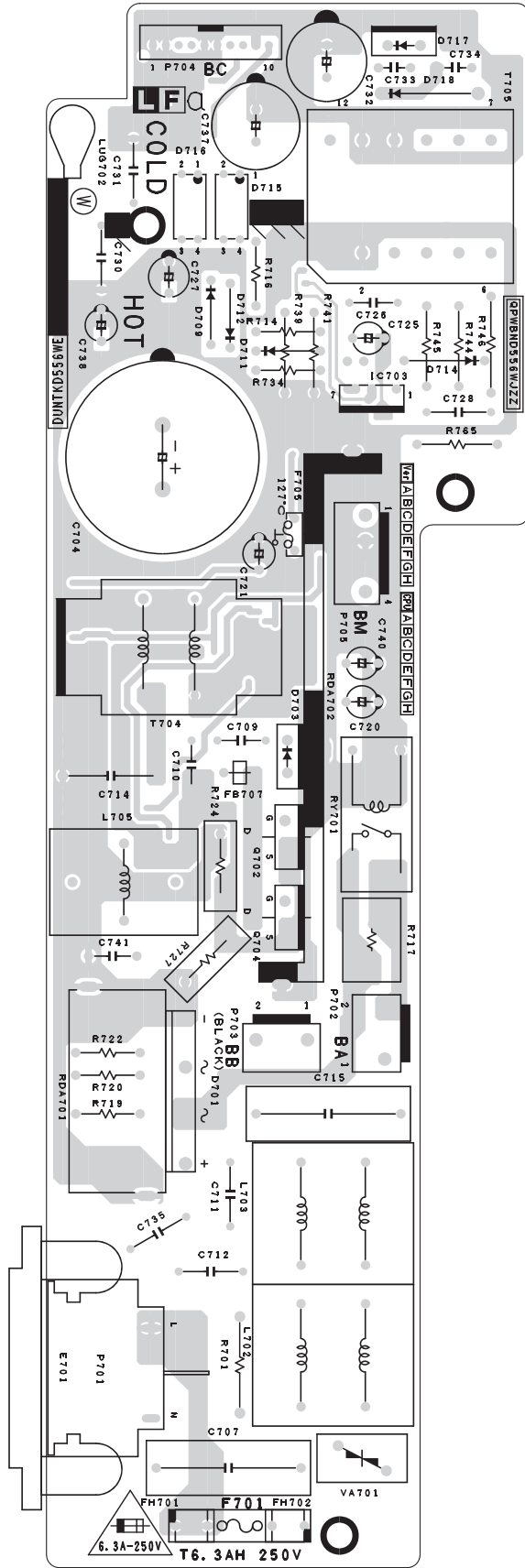
BALLAST CONTROL UNIT



DUNTKD497FMF2

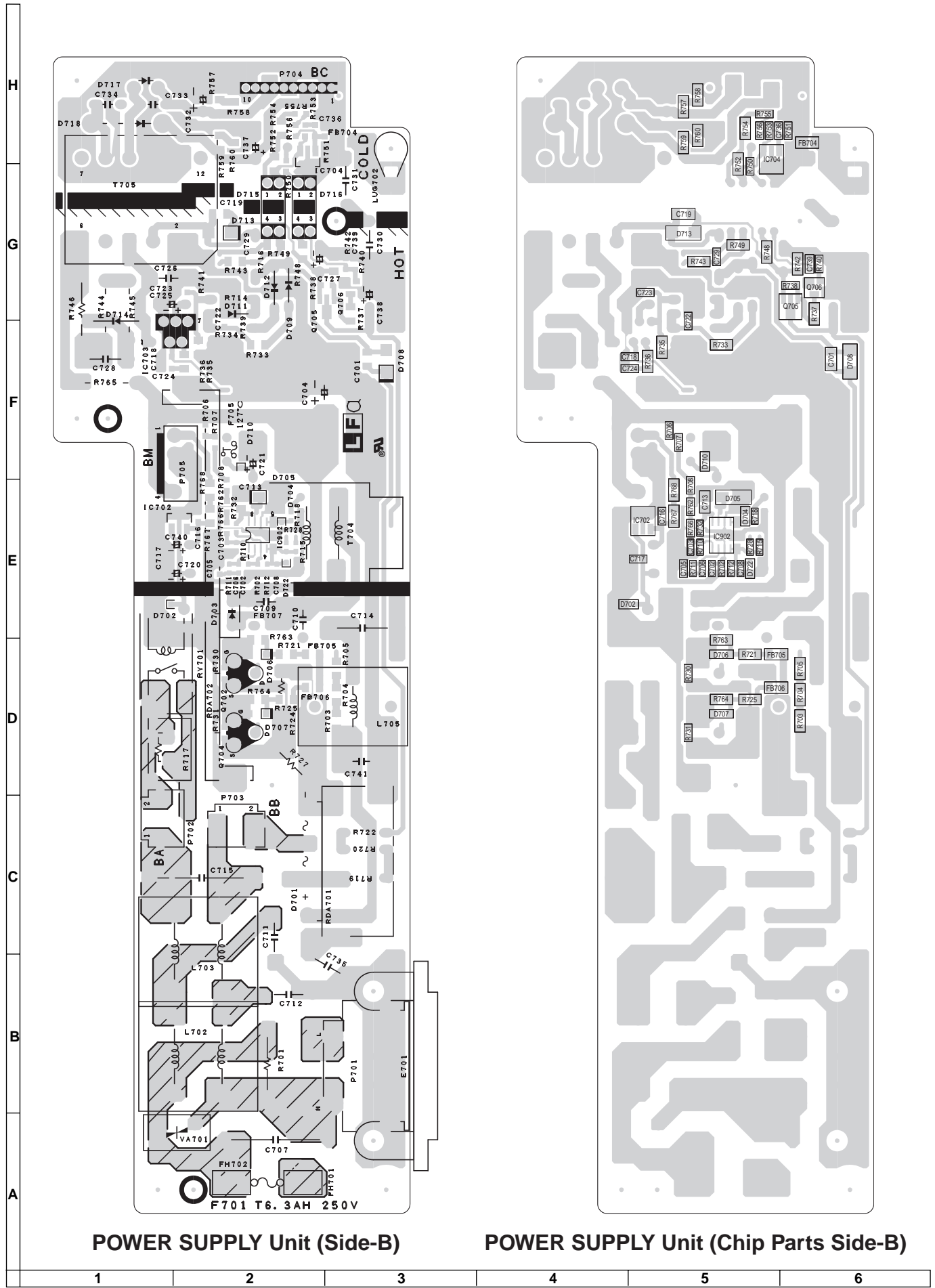
PRINTED WIRING BOARD ASSEMBLIES

H
G
F
E
D
C
B
A



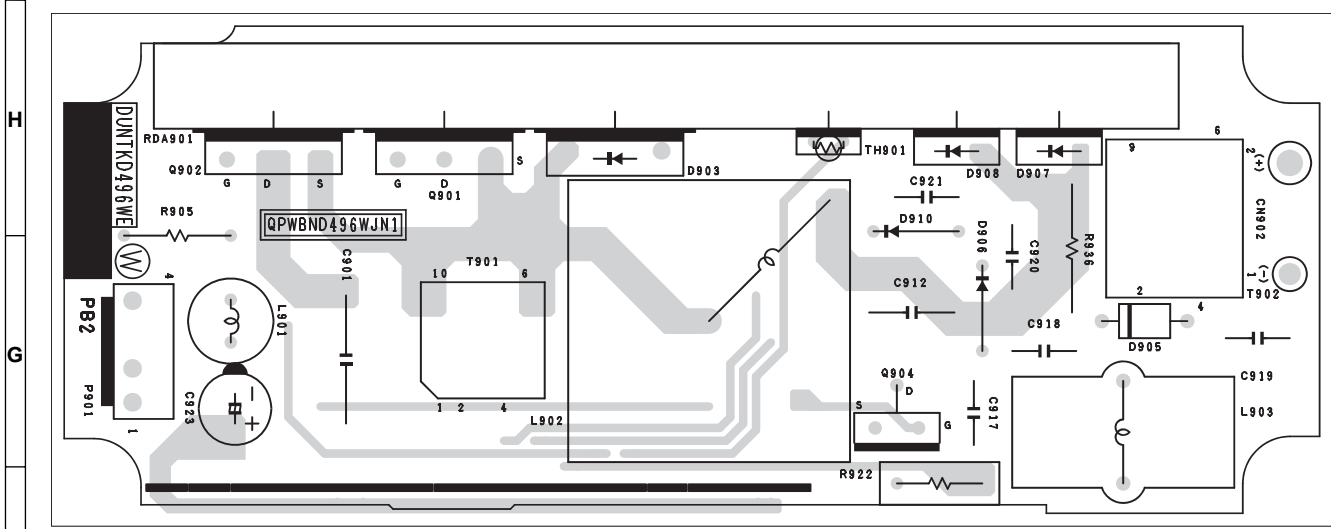
POWER SUPPLY Unit (Side-A)

1 2 3 4 5 6

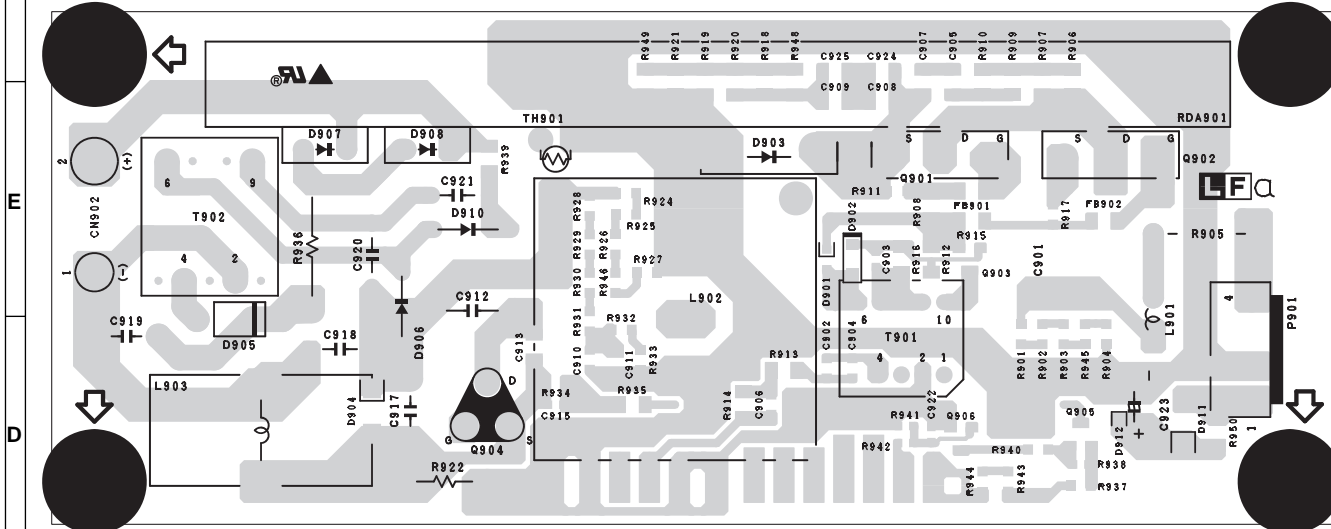


POWER SUPPLY Unit (Side-B)

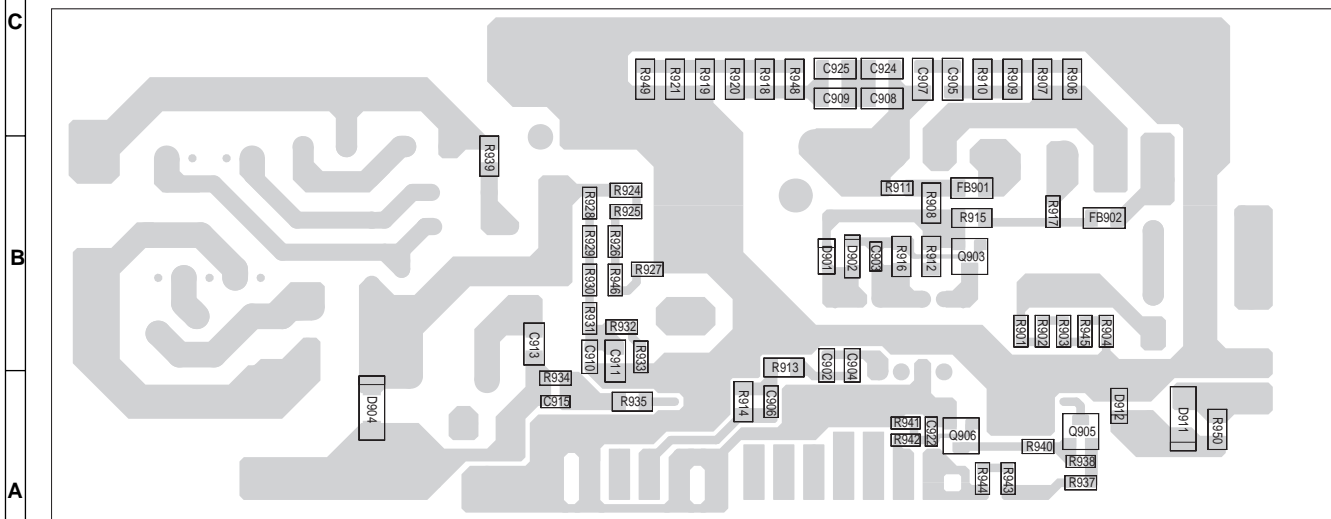
POWER SUPPLY Unit (Chip Parts Side-B)



BALLAST Unit (Side-A)



BALLAST Unit (Side-B)

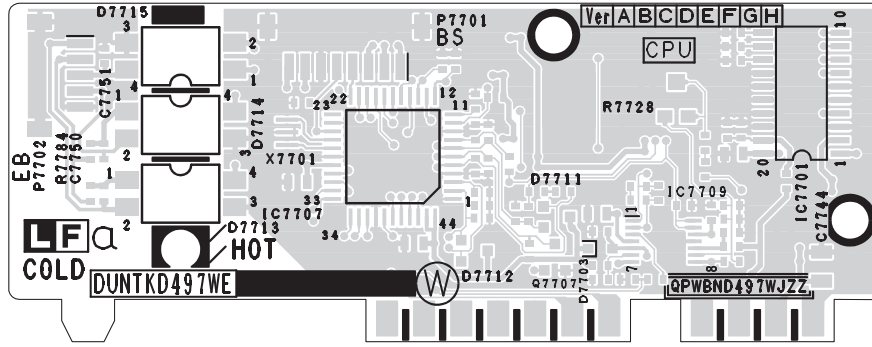


BALLAST Unit (Chip Parts Side-B)

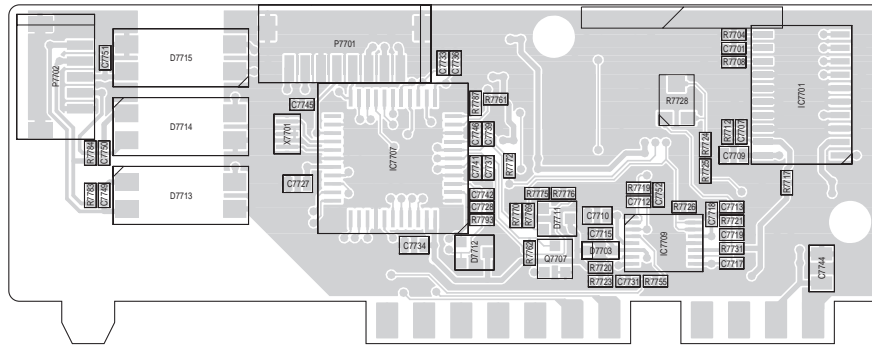
1	2	3	4	5	6
---	---	---	---	---	---

H
G
F
E
D
C
B
A

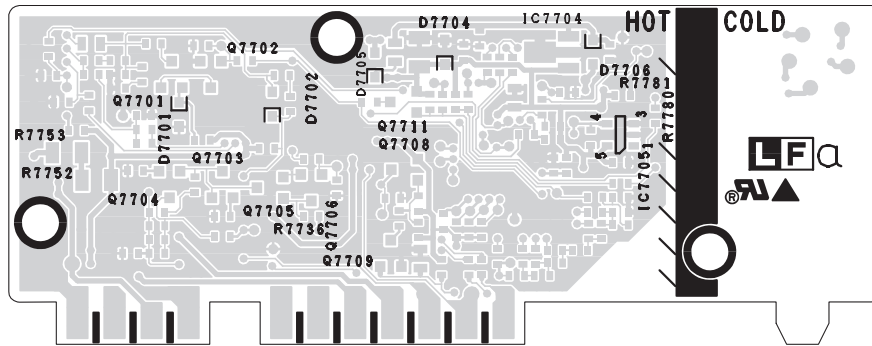
1 2 3 4 5 6



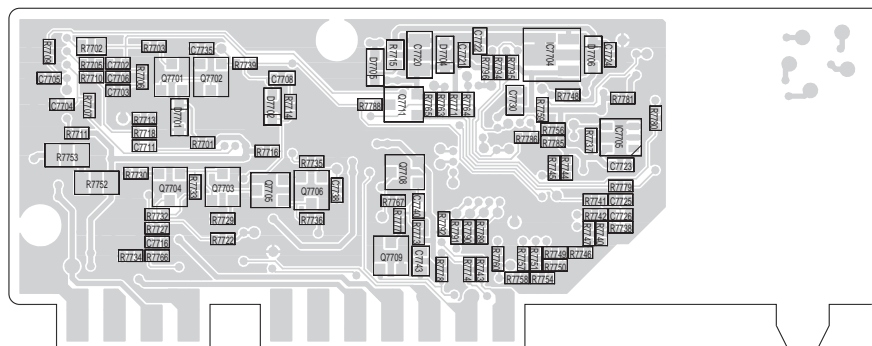
BALLAST CONTROL Unit (Side-A)



BALLAST CONTROL Unit (Chip Parts Side-A)



BALLAST CONTROL Unit (Side-B)



BALLAST CONTROL Unit (Chip Parts Side-B)

PARTS LIST

PARTS REPLACEMENT

Parts marked with "▲" are important for maintaining the safety of the set. Be sure to replace these parts with specified ones for maintaining the safety and performance of the set.

HOW TO ORDER REPLACEMENT PARTS

To have your order filled promptly and correctly, please furnish the following informations.

- | | |
|-----------------|----------------|
| 1. MODEL NUMBER | 2. REF. NO. |
| 3. PART NO. | 4. DESCRIPTION |
| 5. CODE | 6. QUANTITY |

in **USA**: Contact your nearest SHARP Parts Distributor.
For location of SHARP Parts Distributor,
Please call Toll-Free; 1-800-BE-SHARP

in **CANADA**: Contact SHARP Electronics of Canada Limited
Phone (416) 890-2100.

★ MARK: SPARE PARTS-DELIVERY SECTION

Ref. No.	Part No.	★	Description	Code
----------	----------	---	-------------	------

PRINTED WIRING BOARD ASSEMBLIES

Unit Code change

DUNTKC612WEF5	J	MAIN Unit	CU
DUNTKC615WEF5	J	FRONT R/C Unit	AN
DUNTKC681WEF5	J	REAR R/C Unit	AN

Unit composition change

DUNTKD556WEF1	J	POWER SUPPLY Unit	BR
DSETUD496FMF2	J	BALLAST POWER Unit	BT
DUNTKD496WEF2	-	BALLAST Unit	—

When you exchange a ballast unit (DUNTKD496WEF2), please order a ballast power supply unit (DSETUD496FMF2).

DUNTKD497FMF2	J	BALLAST Control Unit	BD
---------------	---	----------------------	----

No change

DUNTKC613WEF0	J	FORMATTER Unit	CK
RUNTKA090WJZZ	J	CMOS CAMERA Unit	BS
RUNTKA091WJZZ	J	PHOTO SENSOR Unit	AZ

Ref. No.	Part No.	★	Description	Code
----------	----------	---	-------------	------

DUNTKD556WEF1 POWER SUPPLY UNIT

INTEGRATED CIRCUITS

IC702	VHiTA78L12F-1Y	J	TA78L12F	AF
IC703	VHiSTRW67652E	J	STR-W6765N	AL
IC704	VHiHA17431U-1Y	J	HA17431UA-TL	AE
IC902	VHiFA5501AN-1Y	J	FA5501AN-D1	AQ

TRANSISTORS

Q702	VS2SK3687++-1	J	2SK3687	AS
Q704	VS2SK3687++-1	J	2SK3687	AS
Q705	VS2SA1797Q+-1Y	J	2SA1797Q	AD
Q706	VS2SC3928AR-1Y	J	2SC3928AR	AB

DIODES

▲ D701	VHDD10XB60H-1	J	D10XB60H	AL
D702	VHD1SS355/-1Y	J	1SS355	AB
D703	RH-DXA073WJZZ	J	Diode, DXA073WJ	AM
D704	VHD1SS355/-1Y	J	1SS355	AB
D705	VHDLi114+++1Y	J	Li114	AC
D706	VHDRB160M40-1Y	J	RB160M40	AC
D707	VHDRB160M40-1Y	J	RB160M40	AC
D708	VHDD1FL20U/-1Y	J	D1FL20U	AC
D709	RH-DX0066GEZZY	J	Diode, DX0066GE	AC
D710	RH-EX1294CEZZY	J	Zener Diode, 27V	AB
D711	RH-DX0066GEZZY	J	Diode, DX0066GE	AC
D712	RH-DX0066GEZZY	J	Diode, DX0066GE	AC
D713	VHDD1FL20U/-1Y	J	D1FL20U	AC
D714	RH-DXA070WJZZY	J	Diode, DXA070WJ	AE
▲ D715	RH-FXA003WJZZ	J	PC123Y82	AD
▲ D716	RH-FXA003WJZZ	J	PC123Y82	AD
D717	RH-DX0459CEZZ	J	Diode, DX0459CE	AE
D718	RH-DX0469CEZZ	J	Diode, DX0469CE	AF
D722	VHD1SS355/-1Y	J	1SS355	AB

PACKAGED CIRCUIT

▲ VA701	RH-VXA018WJN1	J	Varistor	AD
---------	---------------	---	----------	----

COILS AND TRANSFORMERS

▲ L702	RCiLFA178WJZZ	J	Filter Coil	AK
▲ L703	RCiLFA178WJZZ	J	Filter Coil	AK
L705	RCiLPA546WJZZ	J	Peaking Coil	AH
T704	RCiLCA131WJZZ	J	High Frequency Choke Coil	AW
▲ T705	RTRNWA242WJZZ	J	Transformer	

CAPACITORS

C702	VCKYCY1HB103KY	J	0.01 50V Ceramic	AA
C703	VCKYCY1HB102KY	J	1000p 50V Ceramic	AA
C704	RC-EZA922WJZZ	J	330 420V Electrolytic	AU
C705	VCKYTV1EB474KY	J	0.47 25V Ceramic	AC
C706	VCKYCY1EB333KY	J	0.033 25V Ceramic	AA
▲ C707	RC-FZA026WJZZ	J	0.47 275V Metallized Plastic Film	AE
C708	VCKYCY1HB222KY	J	2200p 50V Ceramic	AA
C709	RC-KZA271WJZZ	J	470p 2kV Ceramic	AC
C710	RC-KZA275WJZZ	J	1000p 2kV Ceramic	AD
▲ C711	RC-KZ0105GEZZ	J	2200p 250V Ceramic	AD
▲ C712	RC-KZ0105GEZZ	J	2200p 250V Ceramic	AD
C713	VCKYTV1EB224KY	J	0.22 50V Ceramic	AC
C714	RC-FZA124WJZZ	J	2.2 450V Metallized Plastic Film	AG
▲ C715	RC-FZA026WJZZ	J	0.47 275V Metallized Plastic Film	AE
C716	VCKYTV1EB104KY	J	0.1 25V Ceramic	AB
C717	VCKYTV1EB104KY	J	0.1 25V Ceramic	AB
C718	VCKYTV1HB103KY	J	0.01 50V Ceramic	AA
C720	VCEA4A1VN476M+	J	47 35V Electrolytic	AC
C721	VCEA4A1VN106M+	J	10 35V Electrolytic	AC
C722	VCKYTV1HB222KY	J	2200p 50V Ceramic	AA
C723	VCKYTV1HB471KY	J	470p 50V Ceramic	AA
C724	VCKYTV1HB103KY	J	0.01 50V Ceramic	AA
C725	VCEA4A1HN105M+	J	1 50V Electrolytic	AB
C726	RC-KZA050WJZZ	J	470p 3.15kV Ceramic	AD

Ref. No.	Part No.	★	Description	Code	Ref. No.	Part No.	★	Description	Code
DUNTKD556WEF1									
POWER SUPPLY UNIT (Continued)									
C727	VCEA4A1VN107M+	J	100 35V Electrolytic	AC	R765	VRN-VV3AB1R8J	J	1.8 1W Metal Film	AA
C728	RC-FZ0010TAZZ	J	0.01 630V Metallized Plastic Film	AC	R766	VRN-TV1JD394DY	J	390k 1/10W Metal Film	AB
C730	RC-KZ0105GEZZ	J	2200p 250V Ceramic	AD	R767	VRS-TQ2EF470JY	J	47 1/4W Metal Oxide	AA
C731	RC-KZ0105GEZZ	J	2200p 250V Ceramic	AD	R768	VRS-TQ2EF470JY	J	47 1/4W Metal Oxide	AA
C732	RC-EZ1208CEZZ	J	2200 10V Electrolytic	AD	MISCELLANEOUS PARTS				
C733	RC-KZ0384CEZZ+	J	1000p 1kV Ceramic	AC	△ RY701	RRLYDA008WJZZ	J	Relay	AG
C734	RC-KZ0384CEZZ+	J	1000p 1kV Ceramic	AC	△ F701	QFS-CA010WJZZ	J	Fuse, T6.3AH/AC250V	AF
△ C735	RC-KZ0105GEZZ	J	2200p 250V Ceramic	AD	F705	QFS-TA005WJZZ	J	Thermal Fuse	AG
C736	VCKYTV1EB104KY	J	0.1 25V Ceramic	AB	FB704	RBLN-A007WJZZY	J	Ferrite Bead	AC
C737	RC-EZ1238CEZZ	J	1000 25V Electrolytic	AE	FB705	RBLN-A007WJZZY	J	Ferrite Bead	AC
C738	VCEA4A1VN476M+	J	47 35V Electrolytic	AC	FB706	RBLN-A007WJZZY	J	Ferrite Bead	AC
C739	RC-KZA111WJZZY	J	1 25V Ceramic	AC	FB707	RBLN-0020CEZZ+	J	Ferrite Bead	AB
C740	VCEA4A1VN106M+	J	10 35V Electrolytic	AC	△ FH701	QFSD1013CEZZ+	J	Fuse Holder	AC
C741	RC-FZA126WJZZ	J	0.1 450V Metallized Plastic Film	AE	△ FH702	QFSD1014CEZZ+	J	Fuse Holder	AC
RESISTORS					P701	QPLGAA005WJZZ	J	AC Plug, 2pin	AL
△ R701	RR-HZ0119CEZZY	J	High Voltage High Resistor	AC	P702	QPLGN0269GEZZ	J	Lead Relay Plug, 2pin (BA)	AB
R702	VRS-CY1JF153FY	J	15k 1/16W Metal Oxide	AA	P703	QPLGN0269GEZZ	J	Lead Relay Plug, 2pin (BB)	AB
R703	VRS-TQ2BD474FY	J	470k 1/8W Metal Oxide	AA	P704	QPLGNA049WJZZ	J	Lead Relay Plug, 10pin (BC)	AD
R704	VRS-TQ2BD474FY	J	470k 1/8W Metal Oxide	AA	P705	QPLGNB470WJZZ	J	Lead Relay Plug, 4pin (BM)	AD
R705	VRS-TQ2BD394FY	J	390k 1/8W Metal Oxide	AA	RDA701	PRDARA259WJFW	J	Heat Sink A	AE
R706	VRN-TV1JD394DY	J	390k 1/10W Metal Film	AB	RDA702	PRDARA297WJFW	J	Heat Sink A	
R707	VRN-TV1JD394DY	J	390k 1/10W Metal Film	AB	LUG702	QLUGHA002WJZZ	J	Lug	AB
R708	VRN-TV1JD394DY	J	390k 1/10W Metal Film	AB	E701	LANGQA025WJFW	J	Inlet Bracket	AF
R710	VRN-CY1JF133DY	J	13k 1/16W Metal Film	AB		PRDARA303WJFW	J	Heat Sink B	AH
R711	VRS-CY1JF103JY	J	10k 1/16W Metal Oxide	AA		QCNW-E104WJQZ	J	(Hf)Power-Main	AM
R714	VRD-RM2HD102JY	J	1k 1/2W Carbon	AA		QCNW-E105WJPZ	J	(Lf)Power-Sw	AM
R715	VRS-CY1JF820FY	J	82 1/16W Metal Oxide	AA		QCNW-E106WJPZ	J	Power-Ballast	AR
R716	VRS-SV2HC100JY	J	10 1/2W Metal Oxide	AB		LX-BZ3100CEFN	J	Screw, x4	AA
△ R717	RMPTKA001WJZZ	J	3.9 5W Cement/thermal Fuse	AH		LX-BZA044WJFU	J	Screw, x2	AA
R718	VRS-CY1JF223JY	J	22k 1/16W Metal Oxide	AA		XBSSN30P06000	J	Screw, x4	AA
R719	VRD-RM2HD563JY	J	56k 1/2W Carbon	AA					
R720	VRD-RM2HD563JY	J	56k 1/2W Carbon	AA					
R721	VRS-TQ2EF100JY	J	10 1/4W Metal Oxide	AA					
R722	VRD-RM2HD563JY	J	56k 1/2W Carbon	AA					
R724	RR-WZA012WJZZ	J	0.15 5W Resistor Wire	AE					
R725	VRS-TQ2EF100JY	J	10 1/4W Metal Oxide	AA					
R727	RR-WZA012WJZZ	J	0.15 5W Resistor Wire	AE					
R728	VRS-CY1JF183JY	J	18k 1/16W Metal Oxide	AA					
R730	VRS-TV1JD103JY	J	10k 1/10W Metal Oxide	AA					
R731	VRS-TV1JD103JY	J	10k 1/10W Metal Oxide	AA					
R733	VRS-TQ2BD153JY	J	15k 1/8W Metal Oxide	AA					
R734	VRD-RM2HD221JY	J	220 1/2W Carbon	AA					
R735	VRS-TQ2BD101JY	J	100 1/8W Metal Oxide	AA					
R736	VRS-TQ2BD102JY	J	1k 1/8W Metal Oxide	AA					
R737	VRS-TQ2BD103JY	J	10k 1/8W Metal Oxide	AA					
R738	VRS-TV1JD564JY	J	560k 1/10W Metal Oxide	AA					
R739	VRN-VV3AB3R9J	J	3.9 1W Metal Film	AA					
R740	VRS-TV1JD564JY	J	560k 1/10W Metal Oxide	AA					
R741	VRN-VV3AB1R8J	J	1.8 1W Metal Film	AA					
R742	VRS-TQ2BD103JY	J	10k 1/8W Metal Oxide	AA					
R743	VRS-TQ2BD332FY	J	3.3k 1/8W Metal Oxide	AA					
R744	VRS-VV3AB273J	J	27k 1W Metal Oxide	AA					
R745	VRS-VV3AB273J	J	27k 1W Metal Oxide	AA					
R746	VRS-VV3DB220J	J	22 2W Metal Oxide	AA					
R748	VRS-TQ2BD103JY	J	10k 1/8W Metal Oxide	AA					
R750	VRS-TV1JD102JY	J	1k 1/10W Metal Oxide	AA					
R751	VRS-TV1JD222FY	J	2.2k 1/10W Metal Oxide	AA					
R752	VRS-TQ2BD102JY	J	1k 1/8W Metal Oxide	AA					
R753	VRS-TV1JD101FY	J	100 1/10W Metal Oxide	AA					
R754	VRS-TQ2BD331FY	J	330 1/8W Metal Oxide	AA					
R755	VRS-TV1JD272FY	J	2.7k 1/10W Metal Oxide	AA					
R756	VRS-TV1JD681FY	J	680 1/10W Metal Oxide	AA					
R757	VRS-TQ2EF221JY	J	220 1/4W Metal Oxide	AA					
R758	VRS-TQ2EF221JY	J	220 1/4W Metal Oxide	AA					
R759	VRS-TQ2EF681JY	J	680 1/4W Metal Oxide	AA					
R760	VRS-TQ2EF681JY	J	680 1/4W Metal Oxide	AA					
R762	VRN-TV1JD394DY	J	390k 1/10W Metal Film	AB					
R763	VRS-TQ2EF101JY	J	100 1/4W Metal Oxide	AA					
R764	VRS-TQ2EF101JY	J	100 1/4W Metal Oxide	AA					

Ref. No.	Part No.	★	Description	Code	Ref. No.	Part No.	★	Description	Code
DUNTKD496WEF2									
BALLAST UNIT									
TRANSISTORS									
Q901	VS2SK2699++-1	J	2SK2699	AR	R927	VRS-TV1JD104FY	J	100k 1/10W	Metal Oxide AA
Q902	VS2SK2699++-1	J	2SK2699	AR	R928	VRS-TV1JD224FY	J	220k 1/10W	Metal Oxide AA
Q903	VS2SA2056++-1Y	J	2SA2056	AE	R929	VRS-TV1JD224FY	J	220k 1/10W	Metal Oxide AA
Q904	VS2SK2640++-1	J	2SK2640	AN	R930	VRS-TV1JD224FY	J	220k 1/10W	Metal Oxide AA
Q905	VS2SA1530AR-1Y	J	2SA1530AR	AB	R931	VRS-TV1JD224FY	J	220k 1/10W	Metal Oxide AA
Q906	VS2SC3928AR-1Y	J	2SC3928AR	AB	R932	VRS-TV1JD153FY	J	15k 1/10W	Metal Oxide AA
DIODES AND THERMISTER									
D902	VHDRB160M40-1Y	J	RB160M40	AC	R933	VRS-TV1JD153FY	J	15k 1/10W	Metal Oxide AA
D903	RH-DXA078WJZZ	J	Diode, DXA078WJ	AQ	R934	VRS-TV1JD103JY	J	10k 1/10W	Metal Oxide AA
D904	VHDU1JU44//1Y	J	U1JU44	AE	R935	VRS-TQ2BD102JY	J	1k 1/8W	Metal Oxide AA
D905	VHSG1VB22C+-1	J	G1VB22C	AK	R936	VRS-VV3DB273J	J	27k 2W	Metal Oxide AA
D906	RH-DXA062WJZZY	J	Diode, DXA062WJ	AE	R937	VRS-TV1JD100JY	J	10 1/10W	Metal Oxide AA
D907	VHDFMVG2GS+-1	J	FMVG2GS	AM	R938	VRS-CY1JF103JY	J	10k 1/16W	Metal Oxide AA
D908	VHDFMVG2GS+-1	J	FMVG2GS	AM	R939	VRS-TQ2EF102JY	J	1k 1/4W	Metal Oxide AA
D910	RH-DXA062WJZZY	J	Diode, DXA062WJ	AE	R940	VRS-TV1JD103JY	J	10k 1/10W	Metal Oxide AA
D911	VHDU1JU44//1Y	J	U1JU44	AE	R941	VRS-CY1JF103JY	J	10k 1/16W	Metal Oxide AA
D912	VHD1SS355//1Y	J	1SS355	AB	R942	VRS-CY1JF103JY	J	10k 1/16W	Metal Oxide AA
TH901	RH-HXA020WJZZ	J	Thermister	AK	R945	VRS-TV1JD334FY	J	330k 1/10W	Metal Oxide AA
COILS AND TRANSFORMERS									
L901	RCILPA137WJZZ	J	Peaking Coil	AF	R946	VRS-TV1JD224FY	J	220k 1/10W	Metal Oxide AA
L902	RCILCA119WJZZ	J	High Frequency Choke Coil	AX	R948	VRS-TQ2EF4R7JY	J	4.7 1/4W	Metal Oxide AA
L903	RCILPA475WJZZ	J	Peaking Coil	AK	R949	VRS-TQ2EF4R7JY	J	4.7 1/4W	Metal Oxide AA
T901	RTRNZA102WJZZ	J	Transformer	AH	MISCELLANEOUS PARTS				
T902	RTRNWA188WJZZ	J	Transformer	AK	CN902	QCNW-E190WJQZ	J	Connecting Cord	AU
					FB901	RBLN-A007WJZZY	J	Ferrite Bead	AC
					FB902	RBLN-A007WJZZY	J	Ferrite Bead	AC
					P901	QPLGNB470WJZZ	J	Lead Relay Plug, 4pin	AD
					RDA901	PRDARA258WJFW	J	Heat Sink	AG
						PRDARA296WJFW	J	Heat Sink-C	AK
						LX-BZA044WJFU	J	Screw, x2	AA
						LX-BZ3049GEFN	J	Screw, x6	AB
						PSPAZA737WJZZ	J	Spacer For Q901 Q902	AK
						XBSSN30P06000	J	Screw, x3	AA
CAPACITORS									
C901	RC-FZA215WJZZ	J	1.8 450V Metallized Plastic Film	AH					
C903	VCKYCY1EB473KY	J	0.047 25V Ceramic	AA					
C904	RC-KZA111WJZZY	J	1 25V Ceramic	AC					
C908	RC-KZA450WJZZY	J	470p 1kV Ceramic	AD					
C909	RC-KZA450WJZZY	J	470p 1kV Ceramic	AD					
C912	RC-FZA123WJZZ	J	1 450V Metallized Plastic Film	AF					
C913	RC-KZA378WJZZY	J	1000p 630V Ceramic	AD					
C915	VCKYCY1EF104ZY	J	0.1 25V Ceramic	AA					
C917	RC-FZA126WJZZ	J	0.1 450V Metallized Plastic Film	AE					
C918	RC-KZA275WJZZ	J	1000p 2kV Ceramic	AD					
C919	RC-FZA126WJZZ	J	0.1 450V Metallized Plastic Film	AE					
C920	RC-KZA275WJZZ	J	1000p 2kV Ceramic	AD					
C921	RC-KZA275WJZZ	J	1000p 2kV Ceramic	AD					
C922	VCKYCY1HB103KY	J	0.01 50V Ceramic	AA					
C923	RC-EZA770WJZZ	J	47 35V Electrolytic	AE					
RESISTORS									
R901	VRS-TV1JD334FY	J	330k 1/10W	Metal Oxide AA					
R902	VRS-TV1JD334FY	J	330k 1/10W	Metal Oxide AA					
R903	VRS-TV1JD334FY	J	330k 1/10W	Metal Oxide AA					
R904	VRS-TV1JD123FY	J	12k 1/10W	Metal Oxide AA					
R905	VRN-VV3ABR22J	J	0.22 1W	Metal Film AA					
R908	VRS-TQ2BD100FY	J	10 1/8W	Metal Oxide AA					
R911	VRS-TV1JD103JY	J	10k 1/10W	Metal Oxide AA					
R912	VRS-TQ2EF220JY	J	22 1/4W	Metal Oxide AA					
R913	VRS-TQ2EF100JY	J	10 1/4W	Metal Oxide AA					
R914	VRS-TQ2BD000JY	J	0 1/8W	Metal Oxide AA					
R915	VRS-TQ2BD100FY	J	10 1/8W	Metal Oxide AA					
R916	VRS-TQ2EF181JY	J	180 1/4W	Metal Oxide AA					
R917	VRS-TV1JD103JY	J	10k 1/10W	Metal Oxide AA					
R918	VRS-TQ2EF4R7JY	J	4.7 1/4W	Metal Oxide AA					
R919	VRS-TQ2EF4R7JY	J	4.7 1/4W	Metal Oxide AA					
R920	VRS-TQ2EF4R7JY	J	4.7 1/4W	Metal Oxide AA					
R921	VRS-TQ2EF4R7JY	J	4.7 1/4W	Metal Oxide AA					
R922	RR-WZA015WJZZ	J	0.15 5W	Resistor Wire AE					
R924	VRS-TV1JD224FY	J	220k 1/10W	Metal Oxide AA					
R925	VRS-TV1JD224FY	J	220k 1/10W	Metal Oxide AA					
R926	VRS-TV1JD224FY	J	220k 1/10W	Metal Oxide AA					

Ref. No.	Part No.	★	Description	Code	Ref. No.	Part No.	★	Description	Code
DUNTKD497FMF2									
BALLAST CONTROL UNIT									
INTEGRATED CIRCUITS									
IC7701	VHiM51995AF-1Y	J	M51995AFP	AM	C7737	VCKYCY1EB103KY	J	0.01 25V	Ceramic AA
IC7704	VHiTA78L05F-1Y	J	TA78L05F	AE	C7738	VCKYCY1HB222KY	J	2200p 50V	Ceramic AA
IC7705	VHiBD4742G+-1Y	J	BD4742G-TR	AD	C7739	VCKYCY1EB223KY	J	0.022 25V	Ceramic AA
IC7707	RH-iXB384WJZZQ	J	UPD78F9177AGB-	AY	C7740	VCKYCY1EB103KY	J	0.01 25V	Ceramic AA
IC7709	VHiNJM2902V-1Y	J	NJM2902V	AD	C7741	VCKYCY1AB105KY	J	1 10V	Ceramic AB
TRANSISTORS									
Q7701	VSDTA114EKA-1Y	J	DTA114EKA	AB	C7742	VCKYCY1HB222KY	J	2200p 50V	Ceramic AA
Q7702	VSDTC114EKA-1Y	J	DTC114EKA	AB	C7743	VCKYTV1EB104KY	J	0.1 25V	Ceramic AB
Q7703	VS2SC2712Y/-1Y	J	2SC2712Y	AB	C7744	RC-KZA110WJZZY	J	10 25V	Ceramic AD
Q7704	VS2SC2712Y/-1Y	J	2SC2712Y	AB	C7745	VCKYCY1CB104KY	J	0.1 16V	Ceramic AB
Q7705	VSDTC114EKA-1Y	J	DTC114EKA	AB	C7746	VCKYCY1EB103KY	J	0.01 25V	Ceramic AA
Q7706	VSDTC114EKA-1Y	J	DTC114EKA	AB	C7749	VCCCCY1HH331JY	J	330p 50V	Ceramic AA
Q7707	VSDTC114EKA-1Y	J	DTC114EKA	AB	C7750	VCCCCY1HH331JY	J	330p 50V	Ceramic AA
Q7708	VS2SA1162Y/-1Y	J	2SA1162Y	AB	C7751	VCCCCY1HH331JY	J	330p 50V	Ceramic AA
Q7709	VS2SC2712Y/-1Y	J	2SC2712Y	AB	RESISTORS				
DIODES					R7701	VRS-CY1JF472JY	J	4.7k 1/16W	Metal Oxide AA
D7701	RH-EX1398CEZZY	J	Zener Diode, 8.2V	AB	R7702	VRS-TV1JD331JY	J	330 1/10W	Metal Oxide AB
D7702	VHD1SS355/-1Y	J	1SS355	AB	R7703	VRS-CY1JF563JY	J	56k 1/16W	Metal Oxide AA
D7703	VHD1SS355/-1Y	J	1SS355	AB	R7704	VRS-CY1JF243JY	J	24k 1/16W	Metal Oxide AA
D7704	RH-EX1398CEZZY	J	Zener Diode, 8.2V	AB	R7705	VRS-CY1JF101JY	J	100 1/16W	Metal Oxide AA
D7705	VHD1SS355/-1Y	J	1SS355	AB	R7706	VRS-CY1JF102JY	J	1k 1/16W	Metal Oxide AA
D7706	VHD1SS355/-1Y	J	1SS355	AB	R7707	VRS-CY1JF102JY	J	1k 1/16W	Metal Oxide AA
D7711	VHDDAN202K/-1Y	J	DAN202K	AB	R7708	VRS-CY1JF103JY	J	10k 1/16W	Metal Oxide AA
D7712	VHDDAN202K/-1Y	J	DAN202K	AB	R7709	VRS-CY1JF102JY	J	1k 1/16W	Metal Oxide AA
⚠ D7713	RH-FXA005WJZZY	J	PC123ZY8	AD	R7710	VRS-CY1JF472JY	J	4.7k 1/16W	Metal Oxide AA
⚠ D7714	RH-FXA005WJZZY	J	PC123ZY8	AD	R7711	VRS-CY1JF103JY	J	10k 1/16W	Metal Oxide AA
⚠ D7715	RH-FXA005WJZZY	J	PC123ZY8	AD	R7712	VRS-CY1JF101JY	J	100 1/16W	Metal Oxide AA
PACKAGED CIRCUIT					R7713	VRS-CY1JF182JY	J	1.8k 1/16W	Metal Oxide AA
X7701	RCRMCA019WJZZY	J	Packaged Circuit	AF	R7714	VRS-CY1JF123JY	J	12k 1/16W	Metal Oxide AA
CONTROL					R7715	VRS-TV1JD1R0JY	J	1 1/10W	Metal Oxide AA
R7728	RVR-M4555CEZZY	J	Variable resistor, 10k	AC	R7716	VRS-CY1JF103JY	J	10k 1/16W	Metal Oxide AA
CAPACITORS					R7717	VRS-CY1JF151JY	J	150 1/16W	Metal Oxide AA
C7701	VCCCCY1HH681JY	J	680p 50V Ceramic	AB	R7718	VRS-CY1JF622JY	J	6.2k 1/16W	Metal Oxide AA
C7702	VCKYCY1CB224KY	J	0.22 16V Ceramic	AB	R7719	VRS-CY1JF102JY	J	1k 1/16W	Metal Oxide AA
C7703	VCKYCY1EB473KY	J	0.047 25V Ceramic	AA	R7720	VRS-CY1JF103JY	J	10k 1/16W	Metal Oxide AA
C7704	VCKYCY1EF104ZY	J	0.1 25V Ceramic	AA	R7721	VRN-CY1JF122DY	J	1.2k 1/16W	Metal Film AA
C7705	VCKYCY1EF104ZY	J	0.1 25V Ceramic	AA	R7722	VRS-CY1JF682JY	J	6.8k 1/16W	Metal Oxide AA
C7706	VCKYCY1EB104KY	J	0.1 25V Ceramic	AB	R7723	VRS-CY1JF103JY	J	10k 1/16W	Metal Oxide AA
C7707	VCKYCY1HB222KY	J	2200p 50V Ceramic	AA	R7724	VRN-CY1JF153DY	J	15k 1/16W	Metal Film AA
C7708	RC-KZA114WJZZY	J	1 25V Ceramic	AB	R7725	VRS-CY1JF332DY	J	3.3k 1/16W	Metal Oxide AA
C7709	RC-KZA111WJZZY	J	1 25V Ceramic	AC	R7726	VRS-CY1JF622JY	J	6.2k 1/16W	Metal Oxide AA
C7710	RC-KZA111WJZZY	J	1 25V Ceramic	AC	R7727	VRS-CY1JF302JY	J	3k 1/16W	Metal Oxide AA
C7711	VCKYCY1AB105KY	J	1 10V Ceramic	AB	R7728	VRN-CY1JF102DY	J	1k 1/16W	Metal Film AA
C7712	VCKYCY1CB104KY	J	0.1 16V Ceramic	AB	R7729	VRN-CY1JF102DY	J	1k 1/16W	Metal Film AA
C7713	VCKYCY1HB102KY	J	1000p 50V Ceramic	AA	R7730	VRN-CY1JF102DY	J	1k 1/16W	Metal Film AA
C7715	VCKYCY1EB103KY	J	0.01 25V Ceramic	AA	R7731	VRS-CY1JF222JY	J	2.2k 1/16W	Metal Oxide AA
C7716	VCKYCY1EB333KY	J	0.033 25V Ceramic	AA	R7732	VRN-CY1JF682DY	J	6.8k 1/16W	Metal Film AB
C7717	VCCCCY1HH681JY	J	680p 50V Ceramic	AB	R7733	VRS-CY1JF222DY	J	2.2k 1/16W	Metal Oxide AA
C7718	VCCCCY1HH331JY	J	330p 50V Ceramic	AA	R7734	VRS-CY1JF472JY	J	4.7k 1/16W	Metal Oxide AA
C7719	VCCCCY1HH331JY	J	330p 50V Ceramic	AA	R7735	VRS-CY1JF102JY	J	1k 1/16W	Metal Oxide AA
C7720	RC-KZA109WJZZY	J	10 16V Ceramic	AC	R7736	VRS-CY1JF472JY	J	4.7k 1/16W	Metal Oxide AA
C7721	VCKYCY1EF104ZY	J	0.1 25V Ceramic	AA	R7737	VRS-CY1JF472JY	J	4.7k 1/16W	Metal Oxide AA
C7722	RC-KZA114WJZZY	J	1 25V Ceramic	AB	R7738	VRS-CY1JF153JY	J	15k 1/16W	Metal Oxide AA
C7723	RC-KZA114WJZZY	J	1 25V Ceramic	AB	R7739	VRS-CY1JF102JY	J	1k 1/16W	Metal Oxide AA
C7724	VCKYCY1HF104ZY	J	0.1 50V Ceramic	AA	R7740	VRS-CY1JF153JY	J	15k 1/16W	Metal Oxide AA
C7725	VCKYCY1EB223KY	J	0.022 25V Ceramic	AA	R7741	VRS-CY1JF153JY	J	15k 1/16W	Metal Oxide AA
C7726	VCKYCY1EB223KY	J	0.022 25V Ceramic	AA	R7742	VRS-CY1JF303JY	J	30k 1/16W	Metal Oxide AA
C7727	VCKYTV1CF105ZY	J	1 16V Ceramic	AB	R7743	VRS-CY1JF101JY	J	100 1/16W	Metal Oxide AA
C7728	VCKYCY1EF104ZY	J	0.1 25V Ceramic	AA	R7744	VRS-CY1JF153JY	J	15k 1/16W	Metal Oxide AA
C7730	VCKYTV1CB105KY	J	1 16V Ceramic	AC	R7745	VRS-CY1JF103JY	J	10k 1/16W	Metal Oxide AA
C7731	VCKYCY1CB224KY	J	0.22 16V Ceramic	AB	R7746	VRS-CY1JF153JY	J	15k 1/16W	Metal Oxide AA
C7733	VCKYCY1HB102KY	J	1000p 50V Ceramic	AA	R7747	VRS-CY1JF303JY	J	30k 1/16W	Metal Oxide AA
C7734	VCKYTV1CB105KY	J	1 16V Ceramic	AC	R7748	VRS-CY1JF103JY	J	10k 1/16W	Metal Oxide AA
C7735	VCKYCY1HB222KY	J	2200p 50V Ceramic	AA	R7749	VRS-CY1JF303JY	J	30k 1/16W	Metal Oxide AA
C7736	VCKYCY1HB102KY	J	1000p 50V Ceramic	AA	R7750	VRS-CY1JF153JY	J	15k 1/16W	Metal Oxide AA
					R7751	VRS-CY1JF303JY	J	30k 1/16W	Metal Oxide AA
					R7752	VRS-TQ2BD4R7JY	J	4.7 1/8W	Metal Oxide AA
					R7753	VRS-TQ2BD4R7JY	J	4.7 1/8W	Metal Oxide AA
					R7754	VRS-CY1JF153JY	J	15k 1/16W	Metal Oxide AA
					R7755	VRS-CY1JF000JY	J	0 1/16W	Metal Oxide AA
					R7757	VRS-CY1JF303JY	J	30k 1/16W	Metal Oxide AA
					R7758	VRS-CY1JF153JY	J	15k 1/16W	Metal Oxide AA
					R7759	VRS-CY1JF100JY	J	10 1/16W	Metal Oxide AA
					R7760	VRS-CY1JF303JY	J	30k 1/16W	Metal Oxide AA
					R7761	VRS-CY1JF103JY	J	10k 1/16W	Metal Oxide AA
					R7762	VRS-CY1JF103JY	J	10k 1/16W	Metal Oxide AA
					R7763	VRS-CY1JF102JY	J	1k 1/16W	Metal Oxide AA
					R7764	VRS-CY1JF102JY	J	1k 1/16W	Metal Oxide AA

Ref. No.	Part No.	★	Description	Code
----------	----------	---	-------------	------

Ref. No.	Part No.	★	Description	Code
----------	----------	---	-------------	------

DUNTKD497FMF2**BALLAST CONTROL UNIT (Continued)**

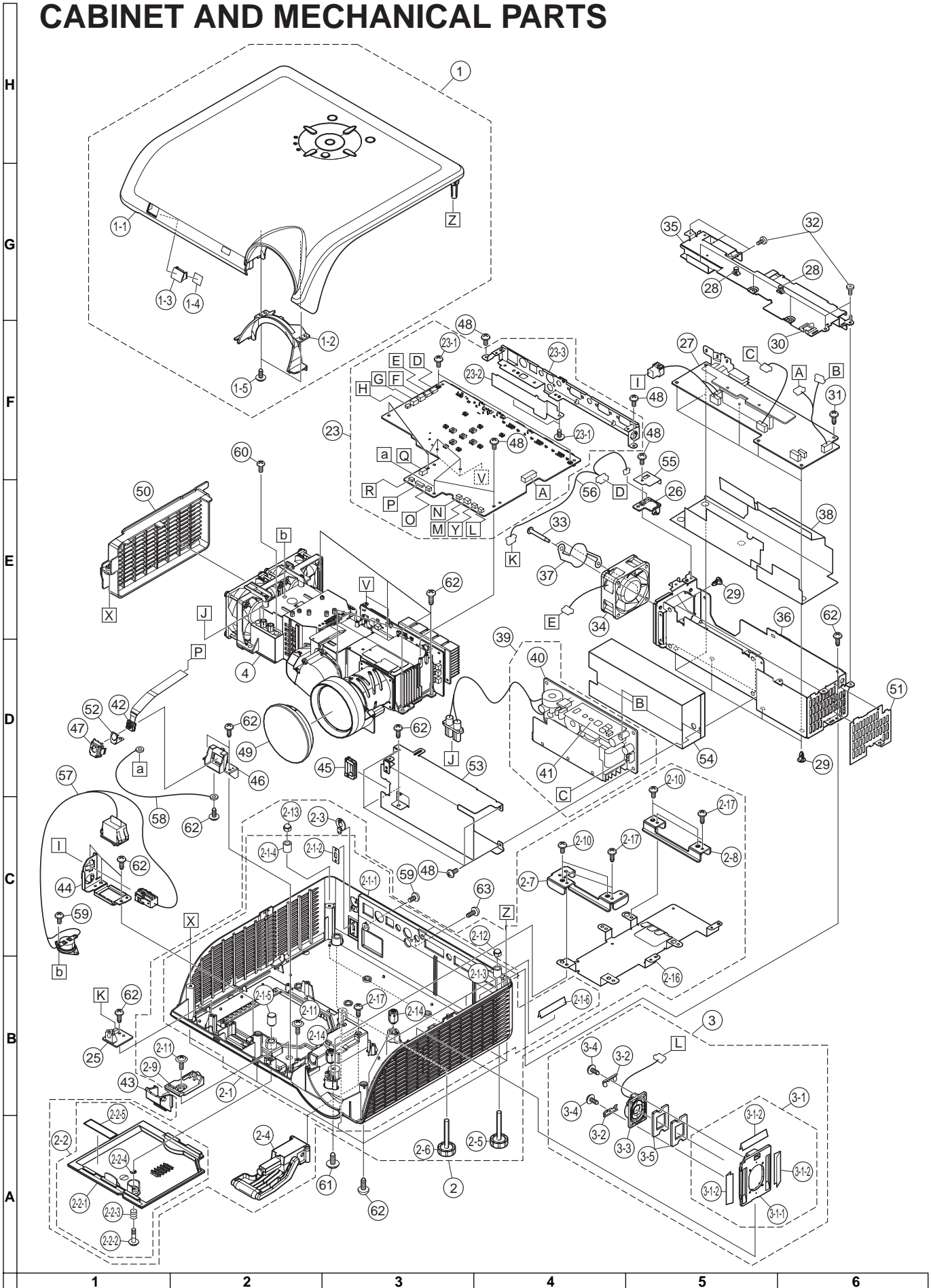
R7765	VRS-CY1JF103JY	J	10k 1/16W	Metal Oxide	AA
R7767	VRS-CY1JF102JY	J	1k 1/16W	Metal Oxide	AA
R7769	VRS-CY1JF472FY	J	4.7k 1/16W	Metal Oxide	AA
R7770	VRS-CY1JF472FY	J	4.7k 1/16W	Metal Oxide	AA
R7771	VRS-CY1JF103JY	J	10k 1/16W	Metal Oxide	AA
R7772	VRS-CY1JF102JY	J	1k 1/16W	Metal Oxide	AA
R7773	VRS-CY1JF472JY	J	4.7k 1/16W	Metal Oxide	AA
R7774	VRS-CY1JF102JY	J	1k 1/16W	Metal Oxide	AA
R7775	VRS-CY1JF472JY	J	4.7k 1/16W	Metal Oxide	AA
R7776	VRS-CY1JF102JY	J	1k 1/16W	Metal Oxide	AA
R7777	VRS-CY1JF472JY	J	4.7k 1/16W	Metal Oxide	AA
R7778	VRS-CY1JF333JY	J	33k 1/16W	Metal Oxide	AA
R7779	VRS-CY1JF101JY	J	100 1/16W	Metal Oxide	AA
R7780	VRS-CY1JF101JY	J	100 1/16W	Metal Oxide	AA
R7781	VRS-CY1JF102JY	J	1k 1/16W	Metal Oxide	AA
R7783	VRS-CY1JF471JY	J	470 1/16W	Metal Oxide	AA
R7784	VRS-CY1JF471JY	J	470 1/16W	Metal Oxide	AA
R7785	VRS-CY1JF103JY	J	10k 1/16W	Metal Oxide	AA
R7786	VRS-CY1JF101JY	J	100 1/16W	Metal Oxide	AA
R7789	VRS-CY1JF103JY	J	10k 1/16W	Metal Oxide	AA
R7790	VRS-CY1JF103JY	J	10k 1/16W	Metal Oxide	AA
R7791	VRS-CY1JF103JY	J	10k 1/16W	Metal Oxide	AA
R7792	VRS-CY1JF103JY	J	10k 1/16W	Metal Oxide	AA
R7793	VRS-CY1JF103JY	J	10k 1/16W	Metal Oxide	AA
R7794	VRS-CY1JF100JY	J	10 1/16W	Metal Oxide	AA
R7795	VRS-CY1JF100JY	J	10 1/16W	Metal Oxide	AA
R7796	VRS-CY1JF100JY	J	10 1/16W	Metal Oxide	AA

MISCELLANEOUS PARTS

P7701	QPLGN0864TAZZY	J	Lead Relay Plug, 8pin (BS)	AE
P7702	QPLGN0564TAZZY	J	Lead Relay Plug, 5pin (EB)	AC

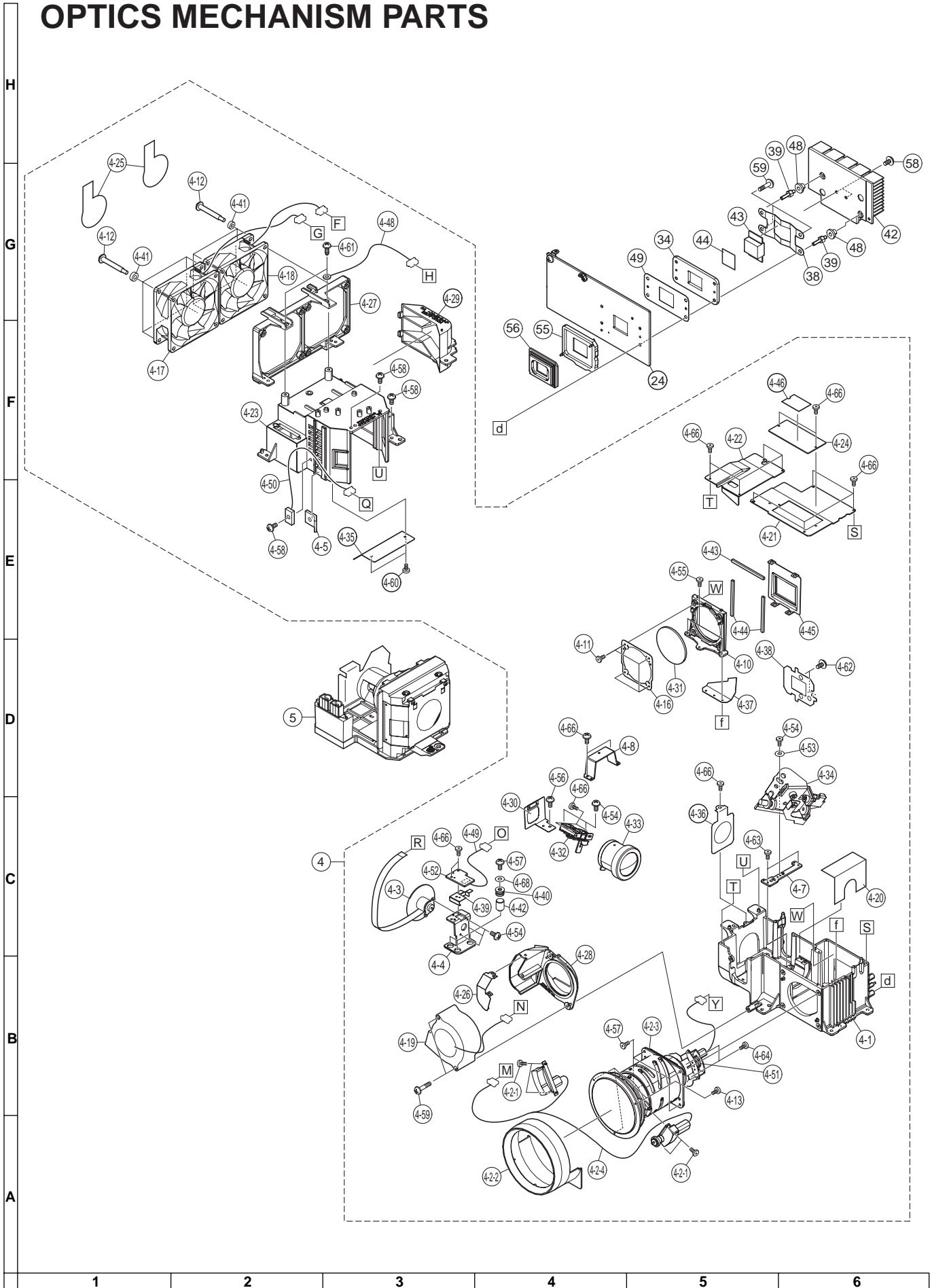
Ref. No.	Part No.	★	Description	Code	Ref. No.	Part No.	★	Description	Code
CABINET AND MECHANICAL PARTS					40	DUNTKD496WEF2	—	BALLAST Unit	—
					41	DUNTKD497FMF2	J	BALLAST Control Unit	BD
					42	RUNTKA090WJZZ	J	Af Ccd Unit	BS
					43	JBTN-A328WJKA	J	Adjuster Button	AH
					44	LANGKA329WJFW	J	Switch Bracket	AF
					45	LHLDWA032WJZZ	J	Edge Saddle	AD
					46	LHLDZA409WJKZ	J	A/F Holder A	AF
					47	CHLDZA410WJF0	J	A/F Holder B	AF
					48	LX-BZA085WJFN	J	Screw, PWB x7/BA x4/DM x2	AB
					49	PCAPHA021WJSA	J	Lens Cap	AL
					50	PDUC-A056WJKZ	J	Duct	AH
					51	PSHEPA232WJZZ	J	Power Shield Sheet	AG
					52	PSLDCA019WJFW	J	Ccd Shield	AD
					53	PSLDMA442WJFW	J	Ballast Shield	AP
					54	PZETKA098WJKZ	J	Ballast Insulat	AS
					55	PZETKA110WJKZ	J	R/C_Insulator	AC
					56	QCNW-C667WJPZ	J	Connecting Cord	AH
					57	QCNW-C671WJPZ	J	Connecting Cord (PA) Power Sw	AZ
					58	QCNW-C939WJPZ	J	Connecting Cord	AC
					59	XBBSN30P08000	J	Screw, AC x2 Ter x2 MK x1	AA
					60	XBPSN30P08JS0	J	Screw	AB
					61	XBPSN40P08JS0	J	Screw, Bot/Opt	AC
					62	XEBSN30P12000	J	Screw, x2 for Lens Cover	AA
					63	XEBSN30P08000	J	Screw, RCA	AA
1	<i>Not Available</i>	—	Top Body Ass'y	—					
1-1	DBDYTA072WJF0	J	Top Body Ass'y	BB					
1-2	GCOVAA949WJSA	J	A/F Cover	AE					
1-3	GCOVAA948WJSA	J	R/C Cover Front	AE					
1-4	PFILDA015WJZZ	J	R/C Filter	AD					
1-5	XEBSN30P12000	J	Screw, x2 for Lens Cover	AA					
2	<i>Not Available</i>	—	Bottom Body Ass'y	—					
2-1	DBDYUA172WEF0	J	Bottom Body Ass'y	BH					
2-1-1	<i>Not Available</i>	—	Bottom Body	—					
2-1-2	LANGFA025WJFW	J	Kensington Angle	AC					
2-1-3	LX-NZ3120CEFW	J	Outsertnut M5_R	AB					
2-1-4	LX-NZ3122CEFW	J	Outsertnut M5_L	AC					
2-1-5	LX-NZ3144CEFW	J	Lamp Door Nut	AC					
2-1-6	<i>Not Available</i>	—	Tefron Tape, x2	—					
2-2	CDORUA023WJF0	J	Lamp Door Ass'y	AR					
2-2-1	<i>Not Available</i>	—	Lamp Door	—					
2-2-2	LX-BZ1009CEFN	J	Screw, for Lamp Door	AE					
2-2-3	MSPRC0023SEFW	J	Spring	AB					
2-2-4	XRESJ30-06000	J	E-Ring	AA					
2-2-5	<i>Not Available</i>	—	Tefron Tape	—					
2-3	GCOVAA299WJSA	J	R/C Cover	AD					
2-4	GLEGPA029WJKA	J	Adjuster (Front)	BA					
2-5	GLEGPA030WJSA	J	Adjuster (R_R)	AK					
2-6	GLEGPA031WJSA	J	Adjuster (R_L)	AK					
2-7	LANGFA113WJFW	J	Bracket A	AE					
2-8	LANGFA114WJFW	J	Bracket B	AF					
2-9	LHLDZA416WJKZ	J	Adjuster Holder	AF					
2-10	LX-BZA067WJFN	J	Screw, x4 for Ceiling Nut	AB					
2-11	LX-HZ3105CEFN	J	Screw, x2 for Adjust Holder	AB					
2-12	LX-NZ3095CEFN	J	2-12	AB					
2-13	LX-NZ3123CEFN	J	2-13	AD					
2-14	LX-NZA003WJFW	J	Ceiling Nut, x4	AD					
2-16	QEARPA134WJFW	J	Bottom Earth	AL					
2-17	XEBSN30P12000	J	Screw, x2 for Lens Cover	AA					
3	<i>Not Available</i>	—	Speaker Holder Ass'y	—					
3-1	DBFL-A017WJF0	J	Speaker Holder Ass'y	AK					
3-1-1	<i>Not Available</i>	—	Speaker Holder	—					
3-1-2	<i>Not Available</i>	—	Tefron Tape, x3	—					
3-2	LANGSA006WJFW	J	Speaker Bracket, x2	AD					
3-3	RSP-ZA085WJQZ	J	Speaker	AP					
3-4	XEBSN20P06000	J	Screw, x2 for Speaker Bracket	AA					
3-5	PSPAHA464WJZZ	J	Speaker Holder Sheet	AE					
4	Refer to the OPTICAL MECHANISM PARTS								
23	DUNTKC612WEF5	J	MAIN Unit	CU					
23-1	LX-BZ3266CEFN	J	Screw, x4	AB					
23-2	PCOVUA044WJ00	J	Light Shield	AE					
23-3	PSLDMA441WJFW	J	Terminal Shield	AM					
25	DUNTKC615WEF5	J	FRONT R/C Unit	AN					
26	DUNTKC681WEF5	J	REAR R/C Unit	AN					
27	DUNTKD556WEF1	J	POWER SUPPLY Unit	BR					
28	LHLDFA024WJKZ	J	MAIN PWB Suport	AD					
29	LHLDFA025WJKZ	J	POWER PWB Suport	AC					
30	LHLDW1220CEZZ	J	Edge Saddle	AD					
31	LX-BZ3100CEFN	J	Screw	AA					
32	LX-BZA143WJF7	J	Screw, for Power Saddle x7	AB					
33	LX-BZA144WJF9	J	Screw, for Power Fan x2	AB					
34	NFANRA061WJ00	J	Power Fan	AS					
35	PSLDMA872WJFW	J	Power Shield Top	AN					
36	PSLDMA873WJFW	J	Power Shield Bottom	AV					
37	PSLDMA874WJSA	J	Fan Shield	AF					
38	PZETKA166WJKZ	J	Power Insulation	AP					
39	DSETUD496FMF2	J	BALLAST POWER Unit	BT					

CABINET AND MECHANICAL PARTS



Ref. No.	Part No.	★	Description	Code	Ref. No.	Part No.	★	Description	Code
OPTICAL MECHANISM PARTS									
4	CCHSKA016WJ31	J	Optical Mecha	EC	38	MSPRPA039WJFW	J	Stud Spring	AL
4-1	LCHSKA016WJFW	J	Main Frame	BP	39	NSFTZA101WJFW	J	Shaft, x2	AE
4-2-1	LX-EZA018WJFN	J	Screw, for Z/F Motor x4	AC	42	PRDARA124WJFW	J	Heat Spreader	AY
4-2-2	PCOVPA024WJSA	J	Focus Ring	AY	43	PRDARA125WJFW	J	Stud	AL
4-2-3	PLNS-A046WJZZ	J	Pj Lens Ass'y	CT	44	PSHEGA031WJKZ	J	Thermal Pad	AF
4-2-4	RMOTBA005WJZZ	J	Z/F Motor Ass'y	BS	48	PSPAZ0445CEZZ	J	Spacer, x2	AC
4-3	CFILWA086WJ02	J	CW Au Al-Cap		49	PSPAZA479WJZZ	J	Kapton Insulator	AL
4-4	LANGKA291WJFW	J	CW Angle	AM	55	QSOCZA081WJZZ	J	C-Spring	BA
4-5	LANGKA404WJFW	J	Temp Fuse Angle	AH	56	RDMDPA014WJZZQ	J	Dmd 0.7 XGA	EK
4-7	LANGKA408WJFW	J	Frame Plate	AX	58	XBPSN30P08JS0	J	Screw, Stud x2 Blst_Socket x2	AB
4-8	LHLDZA389WJFW	J	Lens Hold	AQ	59	XBPSN30P12JS0	J	Screw, for DMD Unit x2	AB
4-10	LHLDZA518WJFW	J	Field Lnse Hold	BB					
4-11	LX-AZA001WJ00	J	Screw, for Field Lens Spring x4	AC					
4-12	LX-BZA090WJF9	J	Screw, Exhaust Fan x8	AX					
4-13	LX-EZA019WJFN	J	Screw, for Focus Ring x3	AD					
4-16	MSPRPA041WJFW	J	FI Spring	AT					
4-17	NFANRA034WJZZ	J	Exhaust Fan2	BG					
4-18	NFANRA035WJZZ	J	Exhaust Fan1	BG					
4-19	NFANSA017WJZZ	J	Lamp Fan	BG					
4-20	PCOVMA018WJFW	J	Dust Proof Plat	AK					
4-21	PCOVZA038WJFW	J	Frame Cover L	AR					
4-22	PCOVZA039WJFW	J	C/W Cover	AR					
4-23	PCOVZA040WJKZ	J	Lamp House	BG					
4-24	PCOVZA044WJFW	J	Frame Plate	AM					
4-25	PCOVZA049WJKZ	J	Exhaust Fan Sheet x2	AV					
4-26	PCOVZA050WJFW	J	Lamp Duct Cover	AK					
4-27	PDUC-A050WJKZ	J	Exhaust Duct	BB					
4-28	PDUC-A051WJKZ	J	Lamp Duct B	AQ					
4-29	PDUC-A055WJKZ	J	Lamp Ex Duct	AR					
4-30	CFILWA082WJ01	J	UV Filter Ass'y	BD					
4-31	PLNS-A047WJZZ	J	Field Lens	BK					
4-32	CLNS-A048WJ01	J	Relay Lens Ass'y	BQ					
4-33	CLNS-A051WJ01	J	Rod Ass'y	BU					
4-34	CMiR-A101WJ01	J	Mirror Ass'y	BF					
4-35	PSLDHA031WJFW	J	House Syanetu	AK					
4-36	PSLDPA022WJFW	J	Frame Apch	AK					
4-37	PSLDPA027WJFW	J	F Lnse Shading	AV					
4-38	PSLDPA028WJFW	J	DMD Apature	AR					
4-39	PSLDPA029WJFW	J	Syakouita A	AR					
4-40	PSPAGA245WJZZ	J	Anti Vib Rubber x3	BC					
4-41	PSPAGA246WJZZ	J	Exhaust Fan Spacer x16	AY					
4-42	PSPAZA511WJZZ	J	Ring Bush CW x3	AP					
4-43	PSPAZA584WJZZ	J	F Lens Packing D	AS					
4-44	PSPAZA589WJZZ	J	F Lens Packing C x4	AK					
4-45	PSPAZA590WJZZ	J	Dustproof Plate	AW					
4-46	PSPAZA603WJZZ	J	Blind Seal x2	AF					
4-48	RH-HXA005WJZZ	J	Temperature Sensor	AK					
4-49	QCNW-C720WJQZ	J	P Sensor Wire	AM					
4-50	QCNW-D665WJQZ	J	Temp Huse Wire	AR					
4-51	CMOTBA006WJ01	J	Iris Ass'y	BL					
4-52	RUNTKA091WJZZ	J	P Sensor Unit	AZ					
4-53	XWHSN20-03050	J	FP Washer x1						
4-54	XBPSN20P04J00	J	Screw, for Ep x1 Rod x2 CW x3	AD					
4-55	XBPSN20P06J00	J	Screw, for FI Hold x2	AD					
4-56	XBPSN25P04JS0	J	Screw, for UV Filter Hold	AD					
4-57	XBPSN25P10JS0	J	Screw, for CW x3 Pj-Lens x4	AD					
4-58	XBPSN30P06000	J	Screw, for Lamp Duct1 Fuse	AA					
4-59	XBPSN30P35JS0	J	Screw, for Lamp Fan Fix x2	AD					
4-60	XEBSN20P04000	J	Screw, for Lamp Hs Heat Pl	AB					
4-61	XEBSN30P08000	J	Screw, RCA	AA					
4-62	XSBSN14P03000	J	Screw, for DMD Aperture x3	AD					
4-63	XSBSN20P04000	J	Screw, for Frame Plate x2	AD					
4-64	XSPSN17P02500	J	Screw, for Iris Motor Fix x2	AD					
4-66	XSPSN20P04000	J	Screw, for CW RD Mirror Fram	AC					
4-68	XWHUW40-03000	J	CW Washer x3	AK					
5	AN-MB70LP	—	Lamp Unit (Option)	—					
24	DUNTKC613WEF0	J	FORMATTER Unit	CK					
34	LHLDZA384WJFW	J	Backer Plate	AM					

OPTICS MECHANISM PARTS



Ref. No.	Part No.	★	Description	Code
----------	----------	---	-------------	------

SUPPLIED ACCESSORIES

△ X1	QACCCA007WJPZ	J	AC Cord for U.S., Canada, etc. (XG-MB70U A)	AR
△ X1	QACCVA011WJPZ	J	AC Cord for Europe, except U.K. (XG-MB70E A)	AT
△ X1	QACCBA036WJPZ	J	AC Cord for U.K., Hong Kong and Singapore (XG-MB70K A)	AX
△ X1	QACCLA018WJPZ	J	AC Cord for Australia, New Zealand and Oceania (XG-MB70K A)	AU
X2	RRMCGA313WJSA	J	Remote Control	BA
X3	QCNWGA045WJPZ	J	RGB Cable	AU
X4	QCNWGA014WJPZ	J	USB Cable	AQ
X5	GCASNA014WJSA	J	Storage Case	AZ
X6	UDSKAA072WJZZ	J	CD ROM (Instruct)	AL
X7	TLABZA717WJZZ	J	"Quick Guide" Label	AF
X8	TiNS-C177WJZZ	J	Operation Manual	AH
X9	SSAKAA160CEZZ	J	Polystyrene Bag	AB
X10	SSAKAA037WJZZ	J	Polystyrene Bag	AE
X11	TLABV0003SEZZ	J	MO Name Label	AB
X12	TLABVA333WJZZ	J	Bar Code Label	AB
X13	TLABZA255WJZZ	J	ER Sticker (XG-MB70U A)	AE
X14	TLABZA734WJZZ	J	MAC Address Label	AZ
X15	TGAN-A019WJZZ	J	SECL Warranty (XG-MB70U A)	AF
X15	TGAN-A232WJZZ	J	SEC ER Infomation (XG-MB70U A)	AC
X15	TGAN-A233WJZZ	J	SECL ER Information (XG-MB70U A)	AC
X15	TGAN-A325WJZZ	J	SEC Warranty (XG-MB70U A)	AB
X16	TCAUZA187WJZZ	J	WEEE Sheet (XG-MB70E/K A)	AC
X16	TCAUZA155WJZZ	J	Caution Sheet	AA
X16	TCAUZA143WJZZ	J	System Lock Caution	AA
X17	TLABZA610WJZZ	J	Recycle Label (XG-MB70E A)	AC
X17	TLABZA956WJZZ	J	WEEE Label (XG-MB70E/K A)	AB
X17	TLABZA957WJZZ	J	Cw Label, x2 (XG-MB70E/K A)	AB





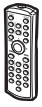




Ref. No.	Part No.	★	Description	Code
----------	----------	---	-------------	------

PACKING PARTS (NOT REPLACEMENT ITEM)

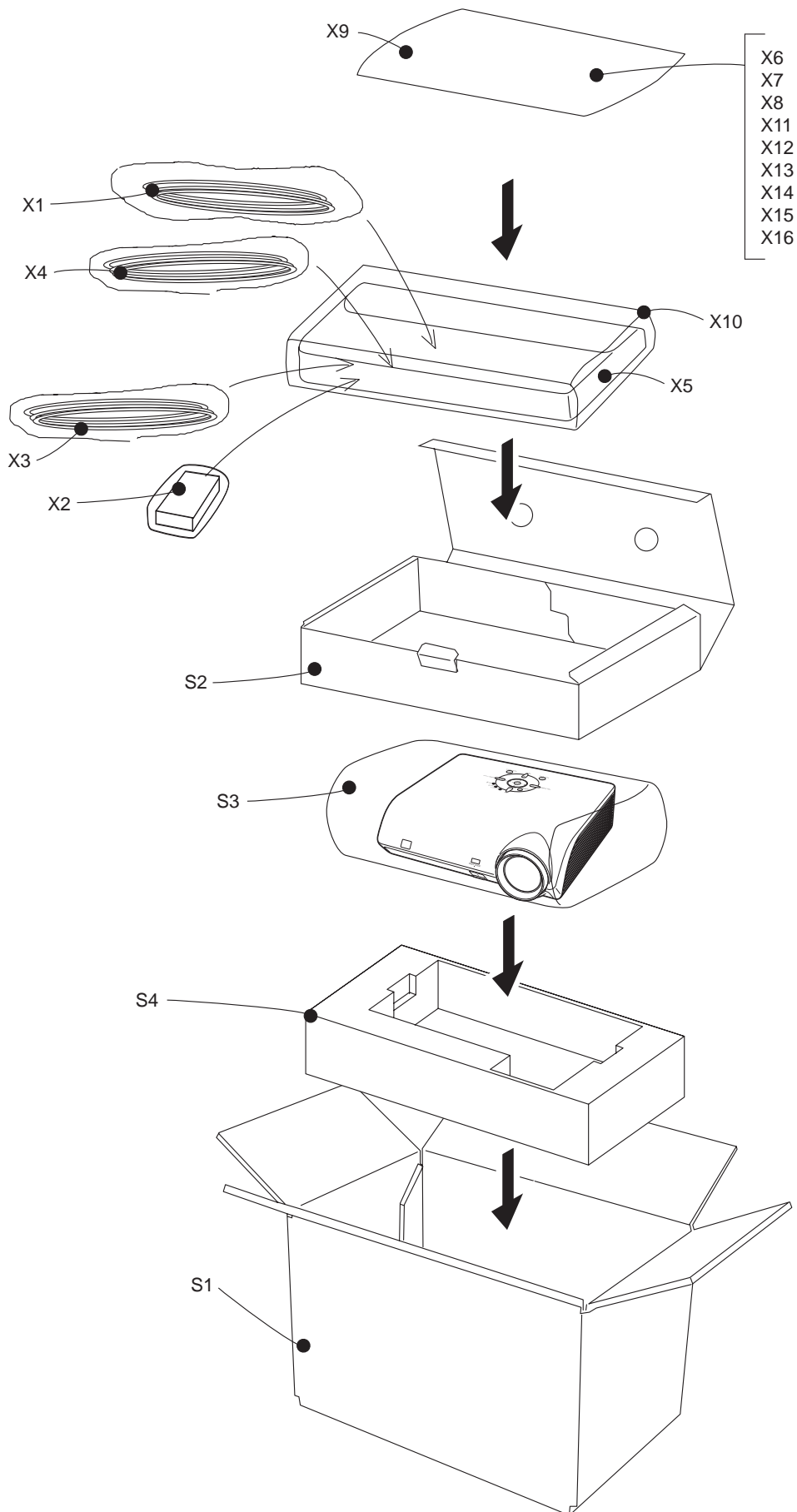
S1	SPAKCC355WJZZ	-	Packing Case	—
S2	SPAKFA577WJZZ	-	Accessories Case	—
S3	SPAKPA360WJZZ	-	Polystyrene Cover	—
S4	SPAKXA533WJZZ	-	Buffer Material	—

SERVICE JIGS (Use For Servicing)

QCNW-5869CEZZ	J	Extension Cable 120pins, Main-Formatter	CL
QCNW-C516WJQZ	J	Extension Cable 3pins, Main-Fan	AG
QCNWKA002WJZZ	J	Extension Cable 3pins, Main-Fan	AS
QCNWKA005WJZZ	J	Extension Cable 4pins, Main-Fan	AX
QCNWKA006WJZZ	J	Extension Cable 4pins, Main-Fan	AX
QCNWKA007WJZZ	J	Extension Cable 16pins, Main-Power	BL
QCNW-E008WJZZ	J	Extension Cable 3 to 2pins, Adjustment Jig to Lamp	AT
RUNTZA018WJZZ	J	Adjustment Jig, for the Ballast Unit	DR

<p>X1 AC Cord*</p> <p>(1)  For U.S., Canada, etc. (6' (1.8 m)) QACCCA007WJPZ</p> <p>(2)  For Europe, except U.K. (6' (1.8 m)) QACCVA011WJPZ</p> <p>(3)  For U.K., Hong Kong and Singapore (6' (1.8 m)) QACCBA036WJPZ</p> <p>(4)  For Australia, New Zealand and Oceania (6' (1.8 m)) QACCLA018WJPZ</p> <p>*Use the power cord that corresponds to the wall outlet in your country.</p>			
<p>X2</p>  <p>Remote Control RRMCGA313WJSA</p>	<p>X3</p>  <p>RGB Cable (9'10" (3.0 m)) QCNWGA045WJPZ</p>	<p>X4</p>  <p>USB Cable (9'10" (3.0 m)) QCNWGA014WJPZ</p>	<p>X5</p>  <p>Storage Case GCASNA014WJSA</p>
<p>X6</p> <p>Projector Manual and technical reference CD-ROM UDSKAA072WJZZ</p>	<p>X7</p> <p>"Quick Guide" Label TLABZA717WJZZ</p>	<p>X8</p> <p>Operation Manual (this manual) TiNS-C177WJZZ</p>	 <p>Lens Cap (attached) PCAPHA021WJSA</p>

PACKING OF THE SET



SHARP

COPYRIGHT © 2005 BY SHARP CORPORATION

ALL RIGHTS RESERVED.

No part of this publication may be reproduced, stored in a retrieval system, or transmitted in any form or by any means, electronic, mechanical, photocopying, recording, or otherwise, without prior written permission of the publisher.

TQ1970-S

Dec. 2005 Printed in Japan

Design and Production Information

Design : JAPAN

Production : NSEC

MY. KD

SHARP CORPORATION
AV Systems Group
CS Promotion Center
Yaita, Tochigi 329-2193, Japan