

## Frozen Potion



Oh No! One of your potions has gone frozen!

If you are in the Mistwood Mountains, discard a potion of your choice into the potion area.

## Spell Spy

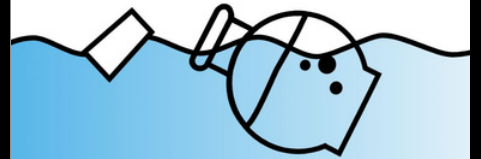
Shhh...



You saw another wizard perform a secret spell!

Take an upward facing spell card from another player and place it face up in your spell card area.

## Waterlogged Potion



Oh No! One of your potions fell into Lavender Lake!

If you are in Silver Springs, discard a potion of your choice into the potion area.

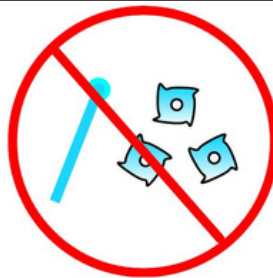
## Spell Refresh



An older wizard sees you and refreshes all of your spells.

Flip over all of your inactive spells. They can now be used.

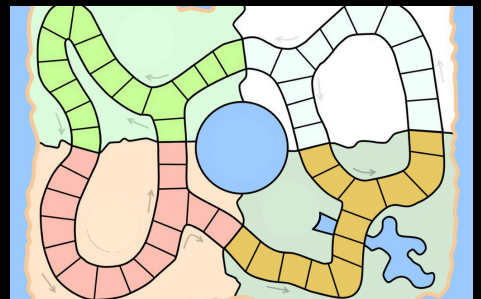
## No, Thanks



Maybe next time I'll battle you...

Keep this card on the table. Next time you need to battle but don't want to, discard this card and the battle won't happen.

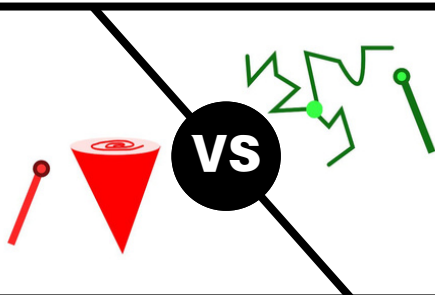
## Wandering Wizard



You sure like to wander!

Move your character to any space on the game board. Do not roll the die to move this turn.

## Forced Battle



Another wizard has challenged you to a battle!

At the end of your turn, battle another wizard with the most potions. If multiple people have the most potions, choose one of them to battle.

## Spell Spy

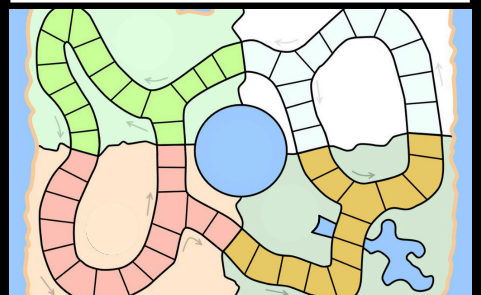
Shhh...



You saw another wizard perform a secret spell!

Take an upward facing spell card from another player and place it face up in your spell card area.

## Wandering Wizard



You sure like to wander!

Move your character to any space on the game board. Do not roll the die to move this turn.