

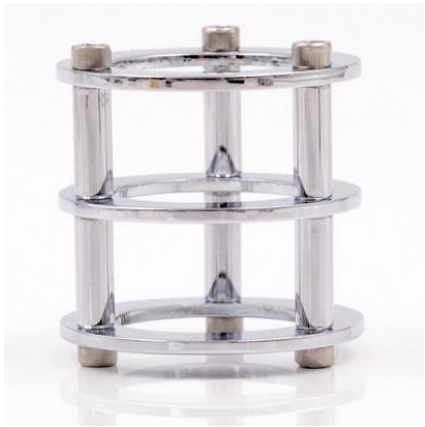
R1, R2, R18	100K
R3, R4	2M2
R5, R9	1K
R6, R12, R13	10K
R7	560E
R8	47E
R10	1K5
R11, R19	1M
R14	27K
R15	68K
R16	220K
R17	470K
R20, R21	2K2
R22	15K
C1	2200uF
C2	10N
C3, C16	1uF
C4, C12	22N
C5	1N
C6	33pF
C7	100pF
C8, C10	4.7uF
C9	2.2uF
C11	3.3N
C 13	10uF
C14, C15	47N
D1, D2, D5	1N4148
D3, D4	LED (any colour)
LED1	Orange LED (Warp303 distortion/overdrive on/off)
LED2	Orange LED (Vacuum Tube Backlight)
LED3	Blue LED (Power On)
P1, P2, P4	100K (B) - Miniature (1.5mm) potentiometer
P3	50K (B) - Miniature (1.5mm) potentiometer
U1	OP07
Q1	MPF102
Vacuum Tube	12AU7 or ECC82
Input/Output: 2 x 6.3mm, Mono jack chassis socket	
Input/Output 2 x 3.5mm, mono jack chassis socket	
S1	1 x Toggle Switch

1 x Relay: 12V Mini PCB Relay SPDT



1 x Chrome Brass Vacuum Tube Guard for 12AU7/ECC82

[Link](#)



1 x 12V Illuminated LED ON/OFF Toggle Switch Aircraft Missile Style Flip Up Cover



1 x Hammond Diecast Aluminium Stompbox Enclosure (Purple)  
145 x 121 x 139 (1590XX)



4 x Flat Top Metal Control knobs For Telecaster Stratocaster Electric Guitar (6mm shaft)



Valve Vacuum Tube Base Socket B9A 9 Pin



1 x Chrome Metal 3mm LED Bezel Clip Holder Mount



1 x 5.5MM PANEL CHASSIS MOUNT DC SOCKET CHARGER POWER JACK PLUG



1 x Philips SBCCS030/05 12V 200 mA Power Supply UK DC Mains

