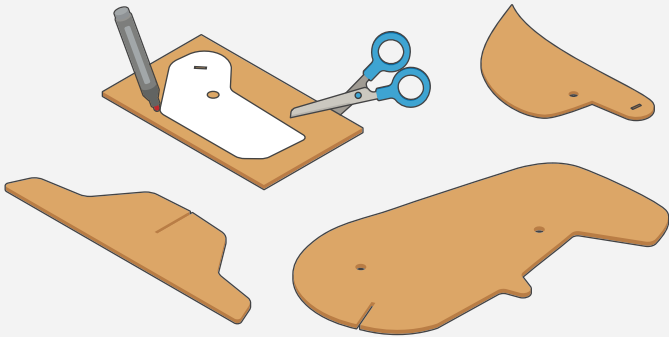


TINYREX

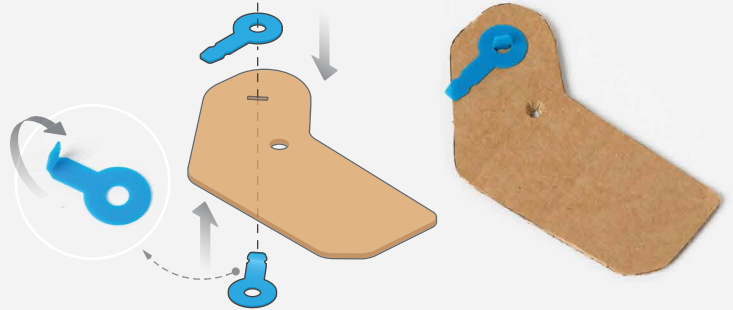
A tiny, yet mighty cardboard dinosaur with a lot to say.



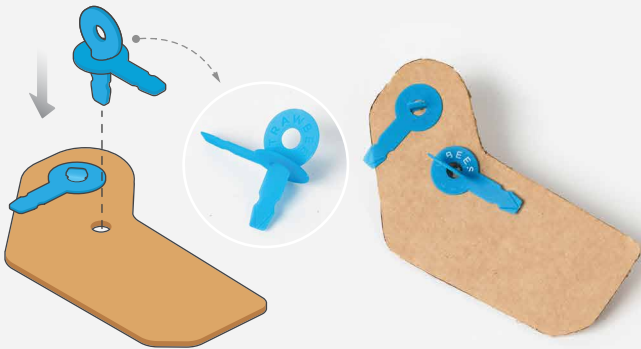
- ① Trace all 4 body pieces on cardboard, cut out, then poke holes through each



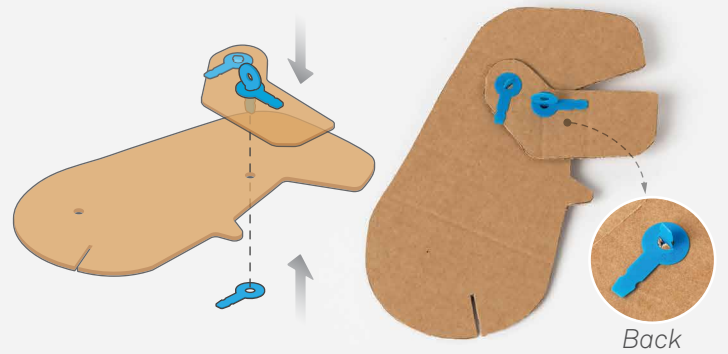
- ② Bend a connector and poke through the flat slot of jaw. Click a connector on the leg to secure



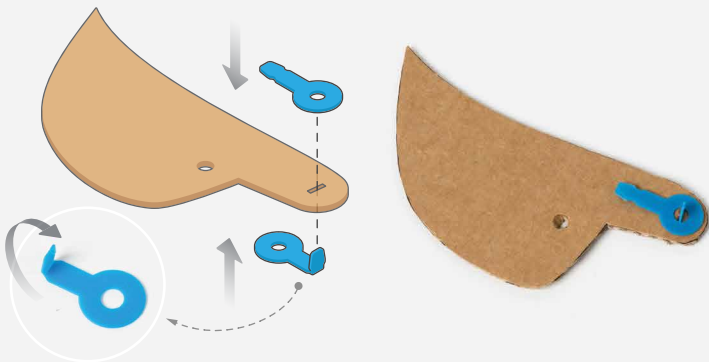
- ③ Make a locked joint then fit into hole



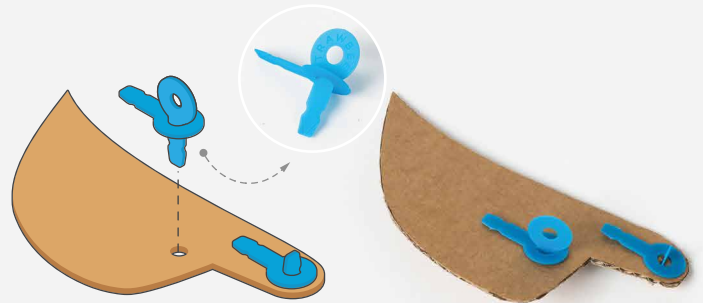
- ④ Fit the jaw on the body pointing to the right then lock with a connector



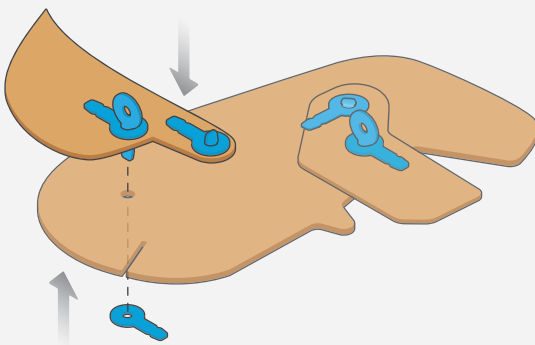
- ⑤ Bend a connector then fit into slot of tail. Lock end joint of tail



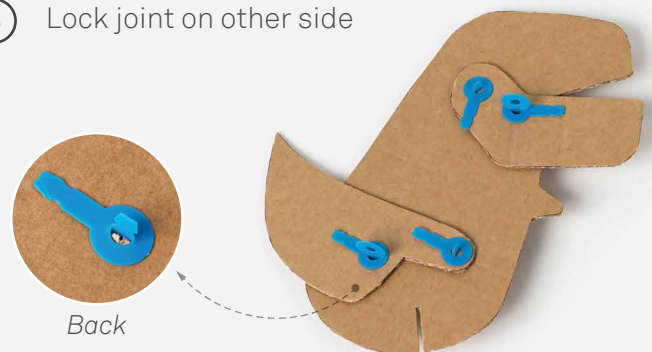
- ⑥ Make a locked joint then insert inside hole



- ⑦ Attach tail to the body

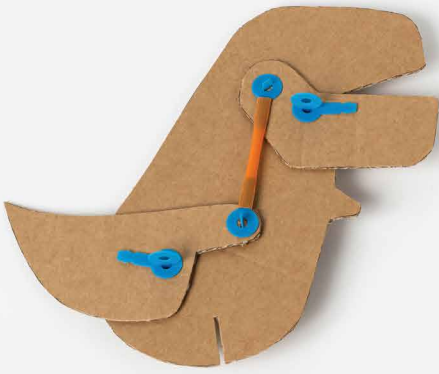


- ⑧ Lock joint on other side

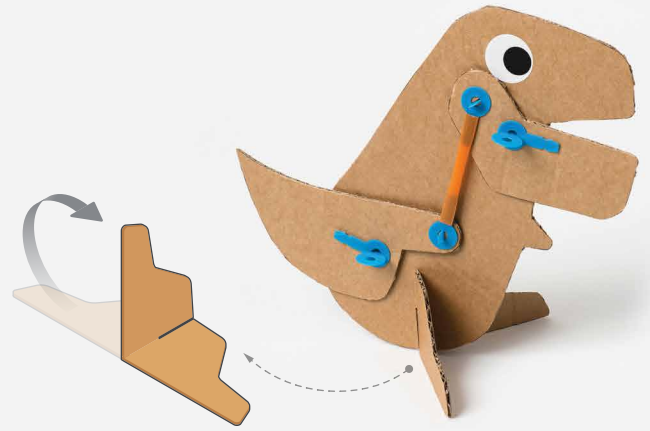


9 Connect a straw between the bottom of jaw and tail

— × 2



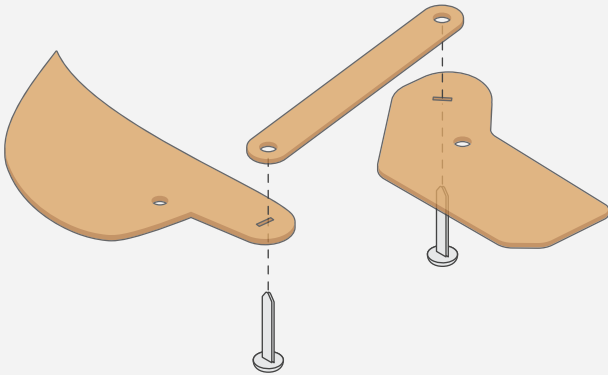
10 Bend the feet and attach, draw an eye on the tiny rex, then animate a roar!



If you don't have Strawbees connectors and straws:

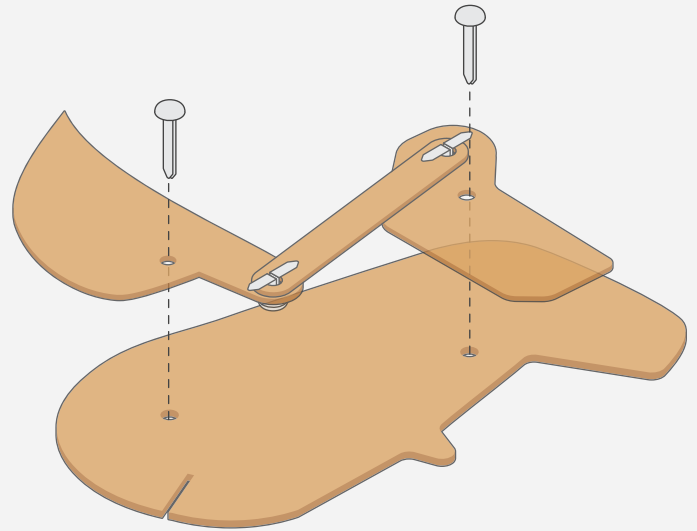
1 Align linkage with slots of jaw and tail and connect with brads

— × 2

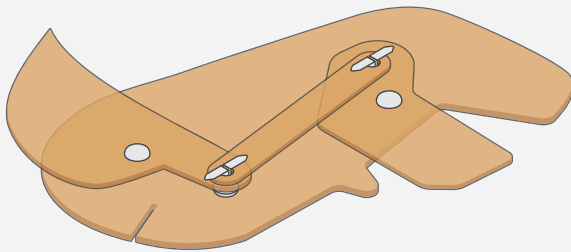


2 Place structure on top of the body then fit brads in holes

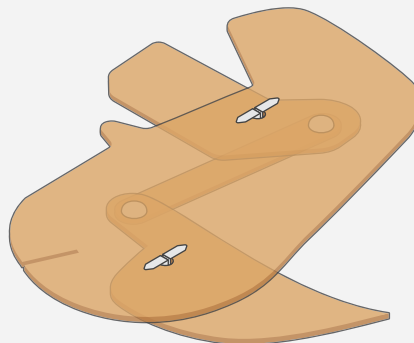
— × 2



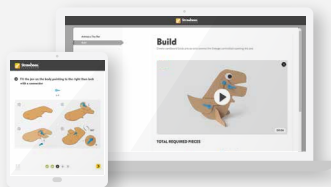
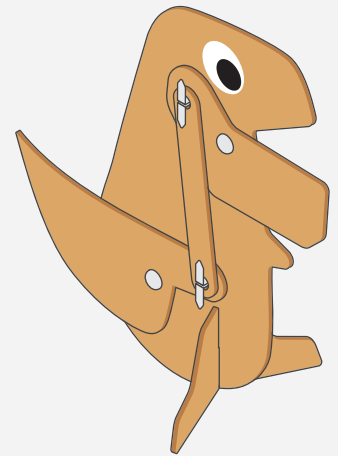
3 Open brads to secure then add feet and eyes



Front



Back



Explore more on Strawbees Classroom

strawbees.com/tinyrex



Strawbees.
CLASSROOM

© Strawbees AB. All rights reserved.