



How to Setup a Wi-Fi Network



What you will need to complete the setup process:



DSL/Cable
Modem



Existing Router



Computer



Ethernet cablex2



Wifi Setup Disk



Power
Adapter



Setting Up

Step 1: Connect the *coax cable* from the *wall jack* (located in the *Coax Wall Plate*) to the *modem*.





Step 2: Using the Ethernet cable, connect the *modem* to the *Wireless router*.



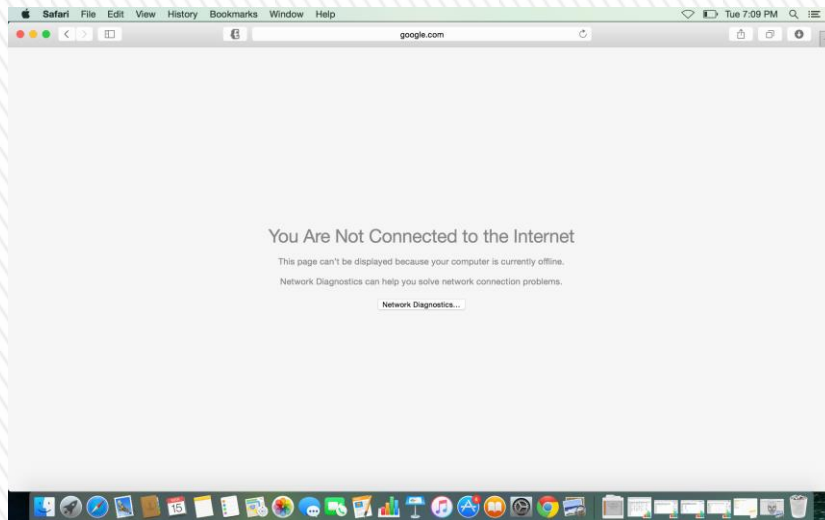


Step 3: Connect the *router's power adapter* to the *router*, and the *modem's power adapter* to the *modem*. Now plug them into the wall.





Step 4: Turn on the *computer* and locate your *web browser*. Go to www.google.com to verify you have internet.



Google Search

I'm Feeling Lucky



Step 5: There are two methods to set up the router.

1. You can use the WIFI setup disc. If so, *skip to step 7.*

OR

2. Visit the routers website, which is the preferred method.

Log into the router by entering 192.168.1.1 in the web address field of your internet browser. If you are prompted to enter a user name and password, enter admin for both.

In the Wireless Name (SSID) field enter the *name* of your router - a name of your choice.

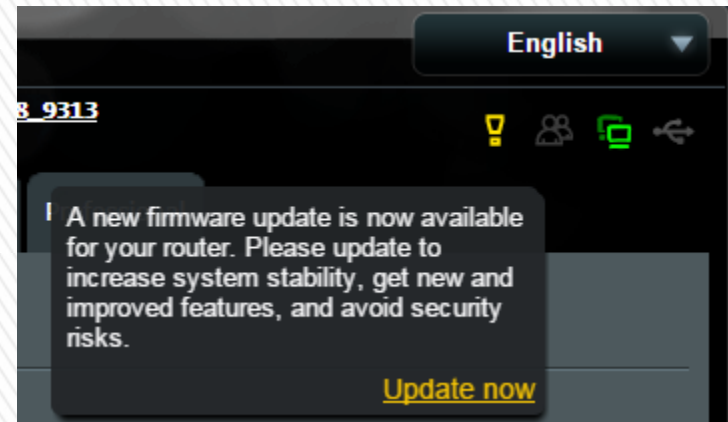
In the WPA-PSK key field enter a *password* of your choice.

The screenshot shows a 'System Status' configuration page for a router. It features three tabs: '2.4GHz', '5GHz', and 'Status'. The 'Status' tab is selected. The page contains several fields for configuration:

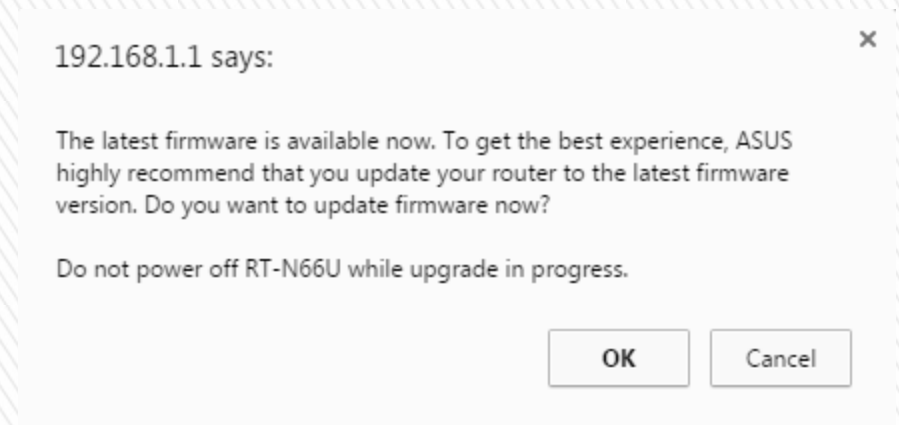
- Wireless name(SSID):** A text input field containing 'WitchHouse'.
- Authentication Method:** A dropdown menu set to 'WPA2-Personal'.
- WPA Encryption:** A dropdown menu set to 'AES'.
- WPA-PSK key:** A text input field filled with ten dots, representing a masked password.
- Apply:** A large black button at the bottom right to save the settings.



Step 6: Make sure the *firmware* is up to date. To do this check the top right of the page. If you see a *yellow exclamation point*, click that and then click “update now.”

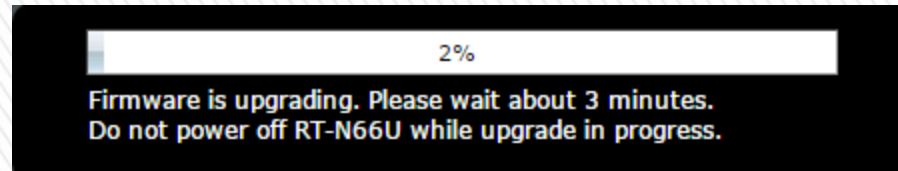


A box will ask you to confirm - click “OK.”

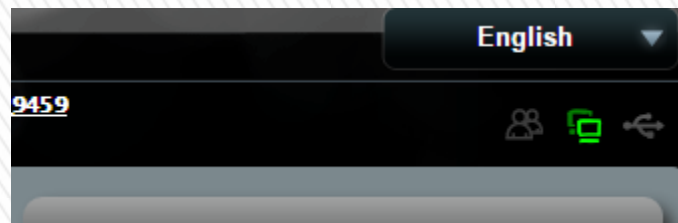




Step 6 Continued: Once the update starts you will see a loading bar with an estimated time.



When the update is finished, you may be asked to log back in. If so, please log in. Now check to see if the *yellow exclamation point* is gone. If it is gone, there are no other updates.





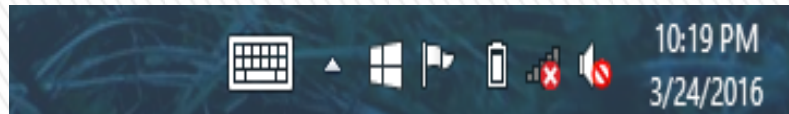
Step 7: Insert the *setup disc* into your *computer* and follow the on screen instructions to set up your *Wi-Fi network*.





Step 8: Once you have setup your router and you have updated your settings, you are ready to log into your wireless internet.

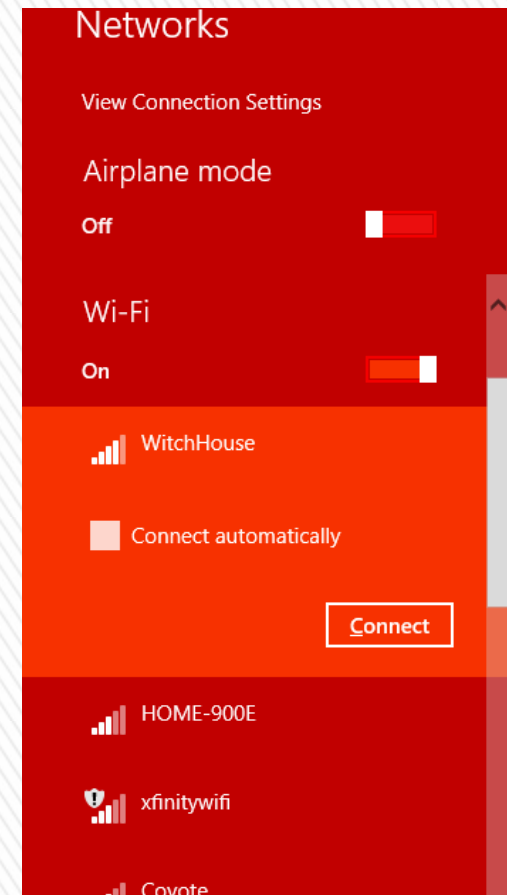
At the bottom right of your computer you will see an icon that looks similar to a bar graph with an “x” – Click on the icon.



Step 9: In the list of wireless networks, find the one with the name that you selected during your setup. Click on that and click *connect*.

If you made up a password then you will be requested to enter it. Enter the password and click “OK.”

Note: You can check the connect automatically box so you don’t have to log into the internet every time.





Once you are *finished* setting up your WI-FI, your hardware should look like this.

