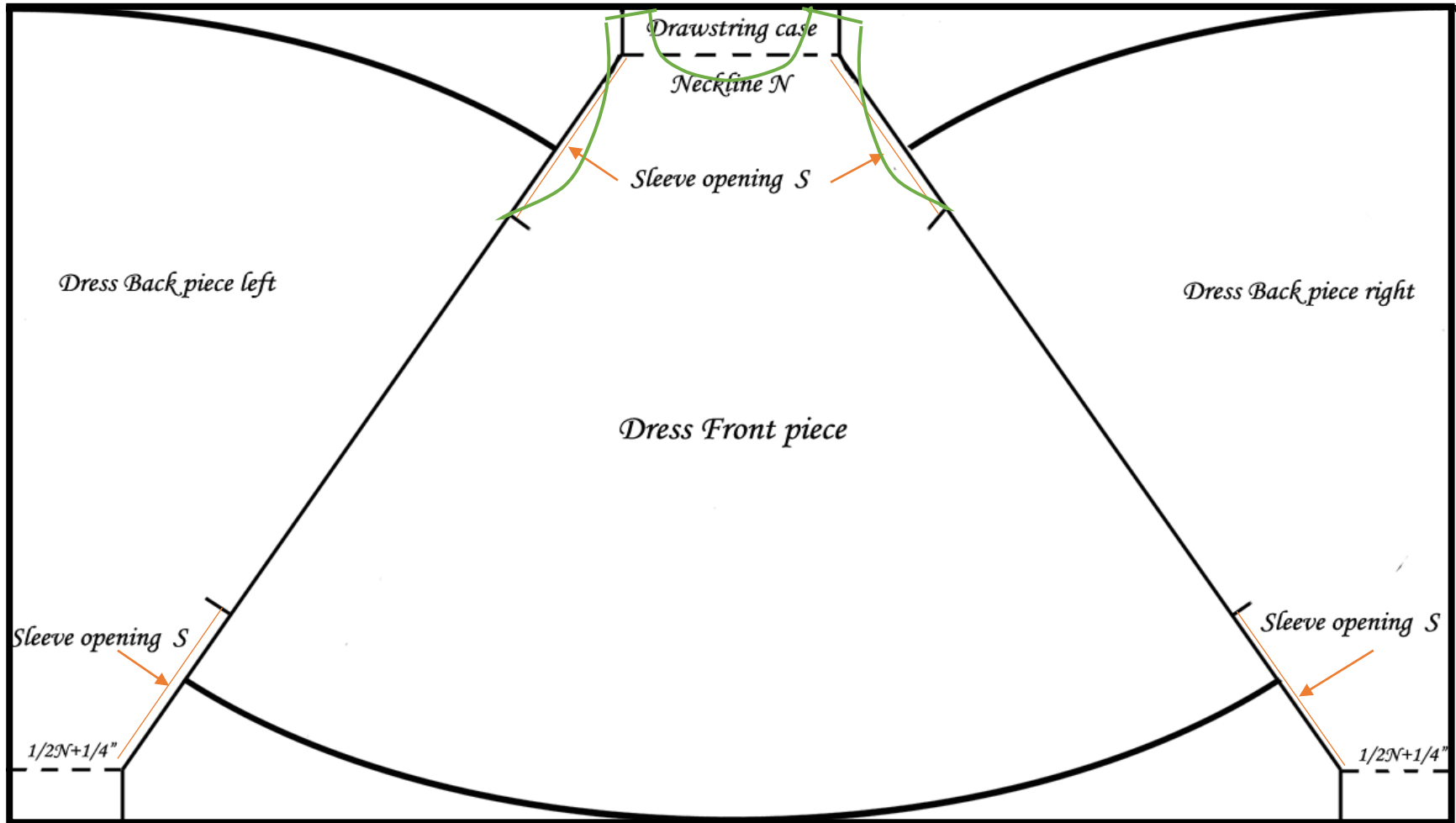


Swimming suit cover dress pattern



This pattern is based on 2m long and 1.2m wide fabric. The dress length is the width of the fabric minus the neck part, one can adjust the length of the dress as desired. Depends on the material, the drawstring case part might need some inner lining.

Sizes:

	Neck line N	Sleeve Opening S
XS	11"	15"
S	12"	15.5"
M	13"	16"
L	14"	16.5"
XL	15"	17"

How to make:

- Cut all the pieces according to the pattern (black lines)
- Sew 2 back pieces together into 1
- Cut 1.5cm (5/8") slots on sleeve opening lines
- Hem drawstring case edges and sleeve openings for front and back pieces
- Fold the neck part in half to form a drawstring case and sew on the neckline for both front and back pieces
- Sew the front piece and back piece together
- Hem the bottom of the dress
- Threading the drawstring through the casing, both front and back
- Use the remaining of the fabric to make a belt for the dress or find a nice belt for the dress

By adding trims and/or change the top part and/or change the length of the dress, one can create different style dresses from this simple design. Green line in the pattern shows one example of the alternative designs.

