

**SUPERHERO
TRIVIA**

**SUPERHERO
TRIVIA**

**SUPERHERO
TRIVIA**

**SUPERHERO
TRIVIA**

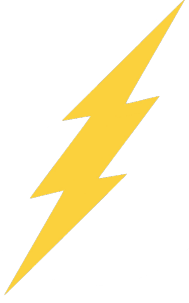
**SUPERHERO
TRIVIA**

**SUPERHERO
TRIVIA**

**SUPERHERO
TRIVIA**

**SUPERHERO
TRIVIA**

**Hydra
Member**



**Hydra
Member**

SHIELD Agent



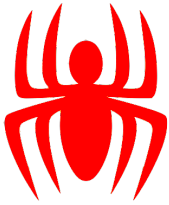
SHIELD Agent

**Marvel
Superhero**



**Marvel
Superhero**

**DC Comics
Superhero**



**DC Comics
Superhero**

**DC Comics
Supervillain**



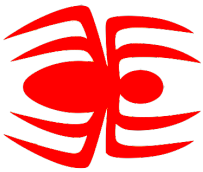
**DC Comics
Supervillain**

**Marvel
Supervillain**



**Marvel
Supervillain**

**DC Comics
Movie**



**DC Comics
Movie**

Marvel Movie



Marvel Movie

Male Actor



Male Actor

Male Superhero



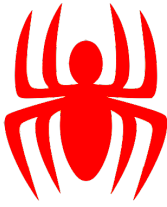
Male Superhero

Masked Villain



Masked Villain

Female Superhero



Female Superhero

Female Actor



Female Actor

Masked Hero



Masked Hero

Enemy of the

X-Men



Enemy of the

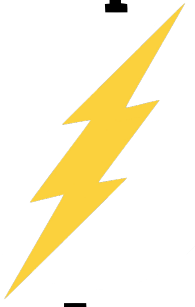
X-Men

X-Men



X-Men

**Special
Weapon**



**Special
Weapon**

Secret Base



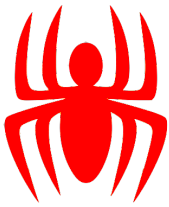
Secret Base

TV Show



TV Show

**Special
Vehicle**



**Special
Vehicle**

Scientist



Scientist

Mutant



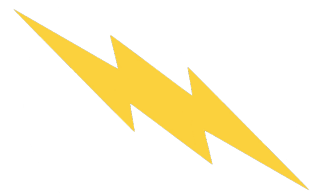
Mutant

Alien



Alien

Flying Hero



Flying Hero

Location



Location

Planet



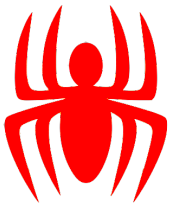
Planet

Alliance



Alliance

Enemy of Spider-Man



Enemy of Spider-Man

Batman Tool



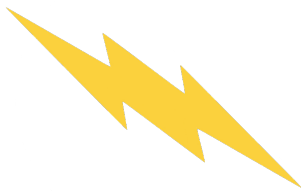
Batman Tool

True Identity



True Identity

Guardian of the Galaxy



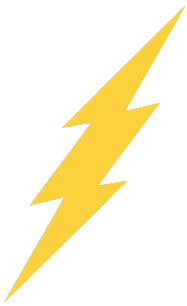
Guardian of the Galaxy

Avenger



Avenger

Traitor



Traitor

Super Saying



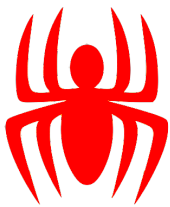
Super Saying

**Super
Accessory**



**Super
Accessory**

**Powerless
Superhero**



**Powerless
Superhero**

Super Power



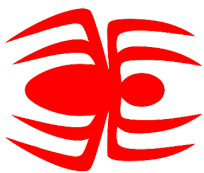
Super Power

Shape-shifter



Shape-shifter

**Rich
Superhero**



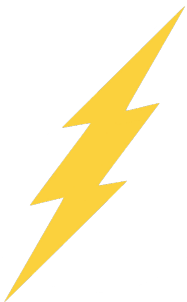
**Rich
Superhero**

**Super
Color-Combo**



**Super
Color-Combo**

**Animal-Like
Superhero**



True Identity



Civilian

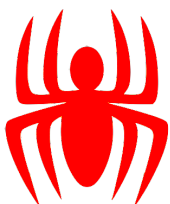


**Animal-Like
Superhero**

True Identity

Civilian

**Assistant/
Sidekick**



**Enemy of
Batman**



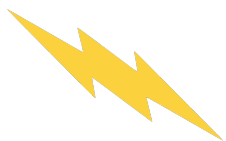
**Weaponless
Hero**



**Assistant/
Sidekick**

**Enemy of
Batman**

**Weaponless
Hero**



**Wild Card
Wild Card**

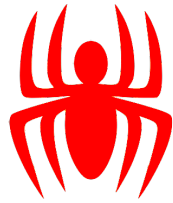


**Wild Card
Wild Card**





Wild Card
Wild Card



Wild Card
Wild Card



Wild Card
Wild Card



Scan For
Directions



Scan For
Directions



Wild Card
Wild Card



Players: 3-6 players, Ages 10 and up.

Goal: To win the most cards by facing-off with other players.

Cards: 1 deck. Each deck has 46 unique playing cards and 6 Wild Cards.

Gameplay:

The person who shuffles the cards should go first. When it's your turn, draw a card from one of the draw piles, then quickly flip it face-up so that everyone sees it at the same time. Put the card face-up in front of you -- this is the beginning of your play pile. Take turns in clockwise-order, drawing cards one-at-a-time and adding them to your play pile. Each card has one of 6 symbols. Continue drawing cards until the symbols match.

Face offs (aka what to do when the symbols match).

If the symbol on your card matches that of another player, you have entered what's known as a "face-off round" -- this is the core of the game.

- In order to win the face-off round, provide a correct example of the person, place or thing on your opponent's card.
- If you finish blurting out a correct answer first, you win the card.
- If you win, you take the other player's card and put it face-down into your winning pile (not to be confused with your play pile of face-up cards). Do not move or block the view of your top card

Cascades (what to do if the loser's pile reveals a new top card).

Once a new top card is revealed, check to see if the loser's card matches that of another player. If so, immediately enter into face-off mode. Do not draw cards until all possible face-offs have been played.

- After all the face-offs and cascades are over, resume normal game play.

Wild cards. A card with two symbols is a wild card and should be placed face-up between the two draw piles. If the two wild card symbols appear on cards topping any two player's play piles, then it's time to go into another face-off round.

- Once a wild card is in play, you must look for both cards matching you own card or matches that match the wild card.

Ending the game. The game is over when all the draw piles are empty. Count the cards in your winning pile. Whoever has the most cards wins.