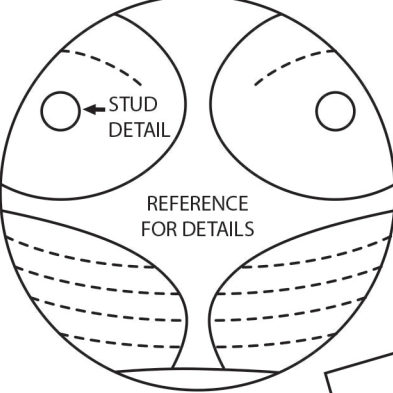


RIGHT INNER  
CUT 2  
(FLIP FOR LEFT SIDE)

CUT OUT HOLES FOR UPPER SOLES

SNITCH BASE / BACKING  
CUT 4  
(CUT SLITS IN 2)



CUT 4  
FLIP 2

CUT 4  
FLIP 2

FOLD LINE

FOLD LINE

FOLD LINE

1B

1B



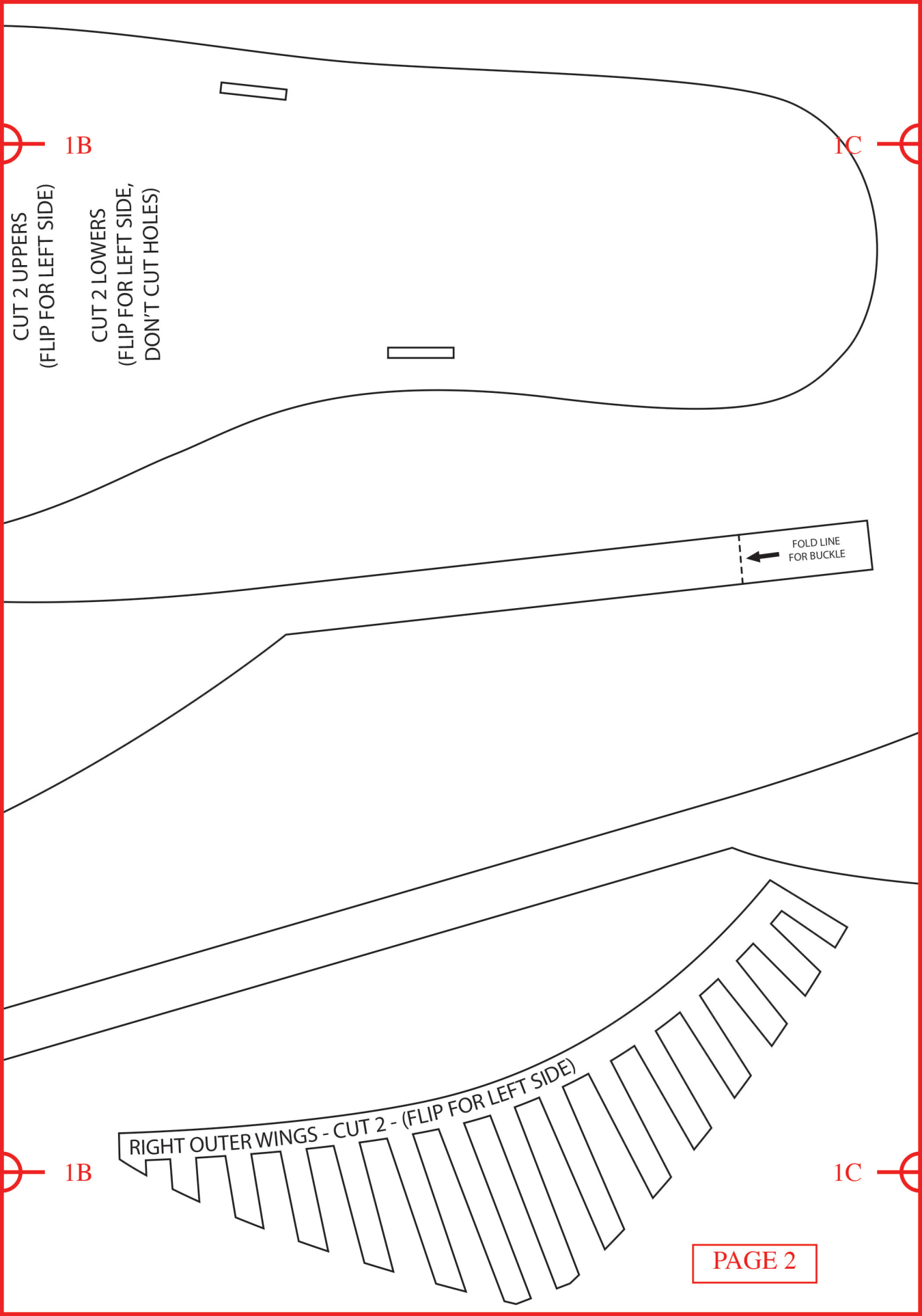
1B



1C

CUT 2 UPPERS  
(FLIP FOR LEFT SIDE)

CUT 2 LOWERS  
(FLIP FOR LEFT SIDE,  
DON'T CUT HOLES)



FOLD LINE  
FOR BUCKLE  
←



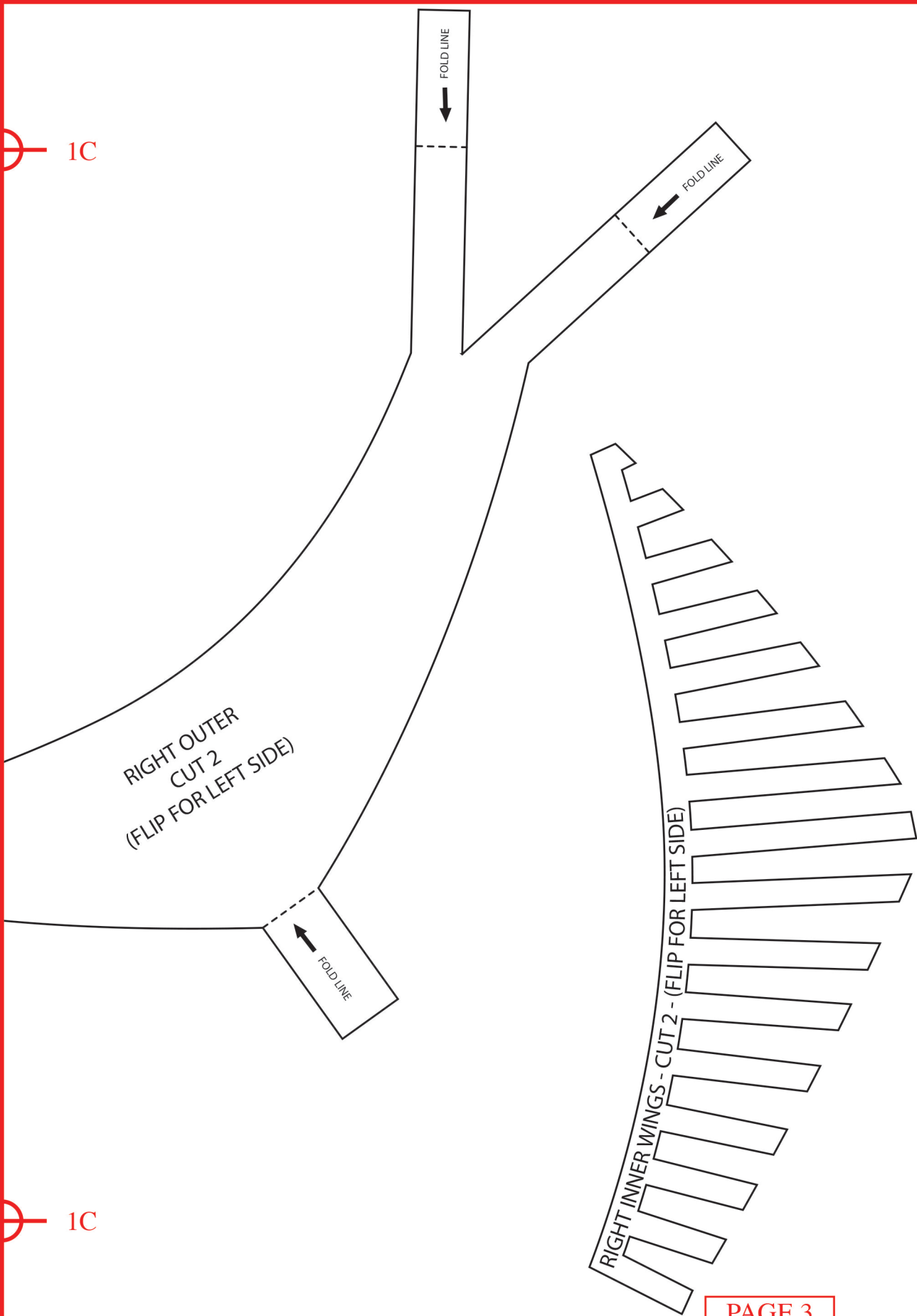
1B



1C

RIGHT OUTER WINGS - CUT 2 - (FLIP FOR LEFT SIDE)

1C



1C