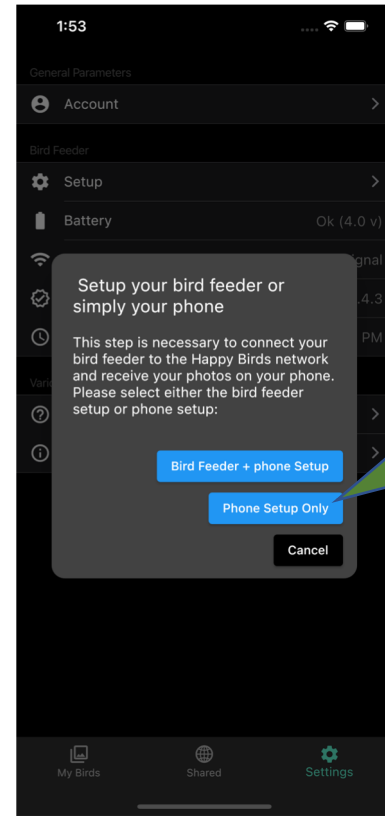
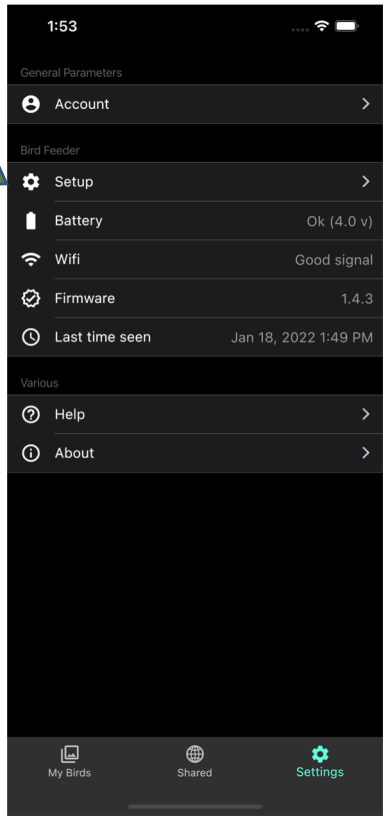




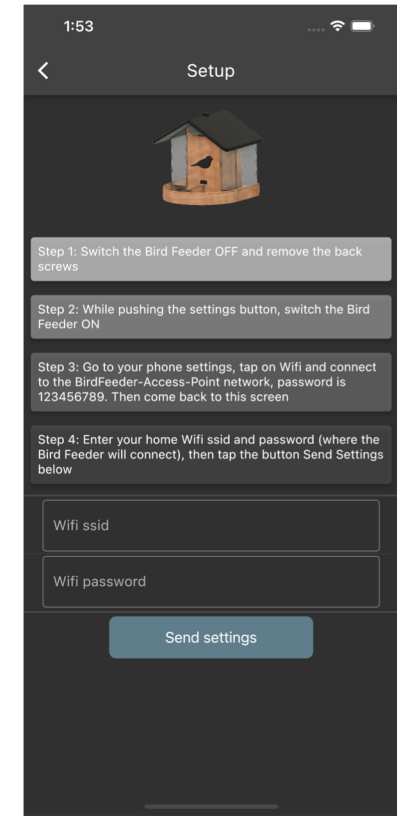
Happy Birds Setup



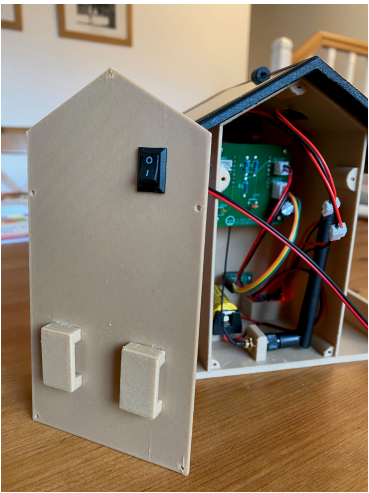
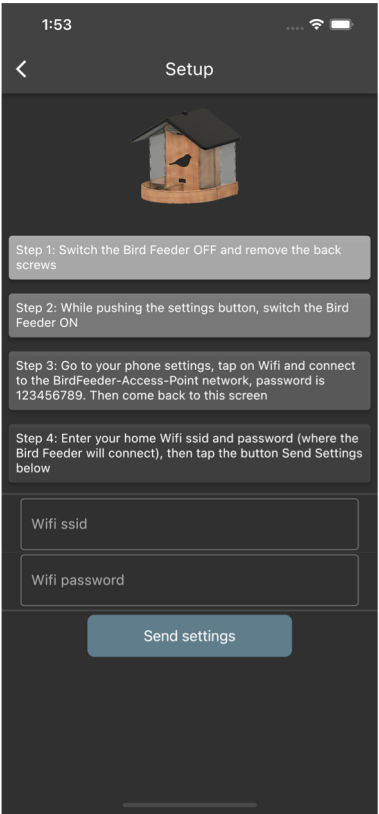
Tap Setup to start
Toucher (cliquer) sur Configurer pour démarrer



Select Bird Feeder + phone Setup
Sélectionner Configuration Mangeoire + téléphone



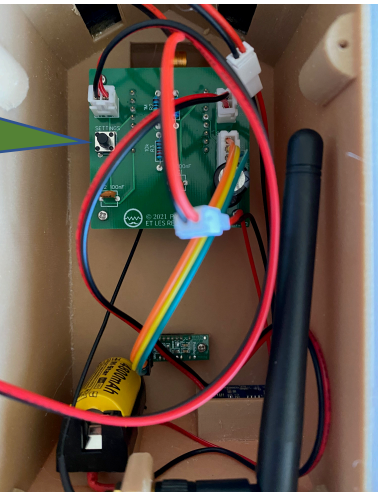
Bird Feeder Setup 1/3



Step 1: Switch the Bird Feeder OFF and remove the back screws

Etape 1: Mettre la mangeoire hors tension et retirer les vis du panneau arrière

Push the settings button

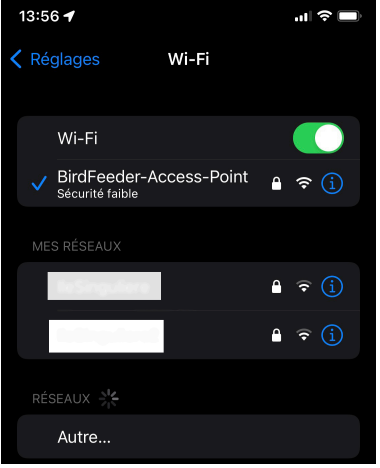


Step 2: While pushing the settings button, switch the Bird Feeder ON

Etape 2: Tout en appuyant sur le bouton settings, remettre la mangeoire sous tension

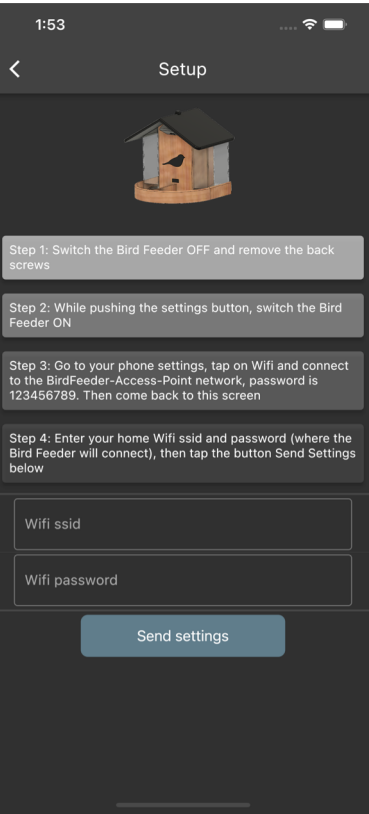


Bird Feeder Setup 2/3



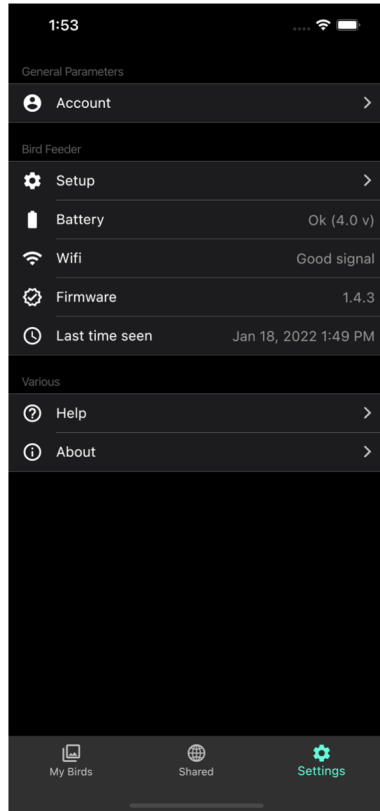
Step 3: Go to your phone settings, tap on Wifi and connect to the BirdFeeder-Access-Point network, password is 123456789

Etape 3: Allez dans le menu réglages Wifi de votre smartphone, et connectez-vous au réseau BirdFeeder-Access-Point avec le mot de passe 123456789



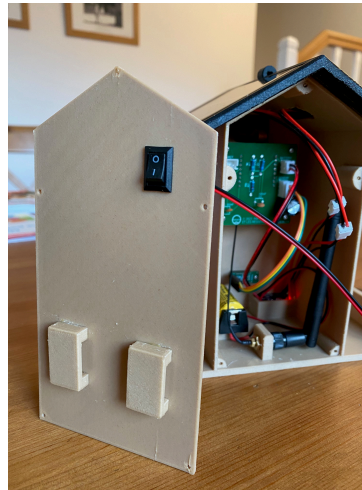
Step 4: Enter your home Wifi ssid and password (where the Bird Feeder will connect), then tap the button Send Settings below

Etape 4: Entrez le nom de votre réseau Wifi (où se connectera votre mangeoire) avec son mot de passe, puis appuyez sur le bouton Envoyer



After successful setup,
you are back to the
Settings page

*Lorsque la configuration
est terminée, vous êtes de
retour sur la page
Réglages*



Switch the Bird Feeder
OFF and ON again

*Eteignez et rallumez la
mangeoire*



Go back to your phone
settings, tap on Wifi and
connect back to your
home network

Retournez dans le menu
Wifi de votre smartphone
et reconnectez vous à
votre Wifi.

Bird Feeder Setup 3/3