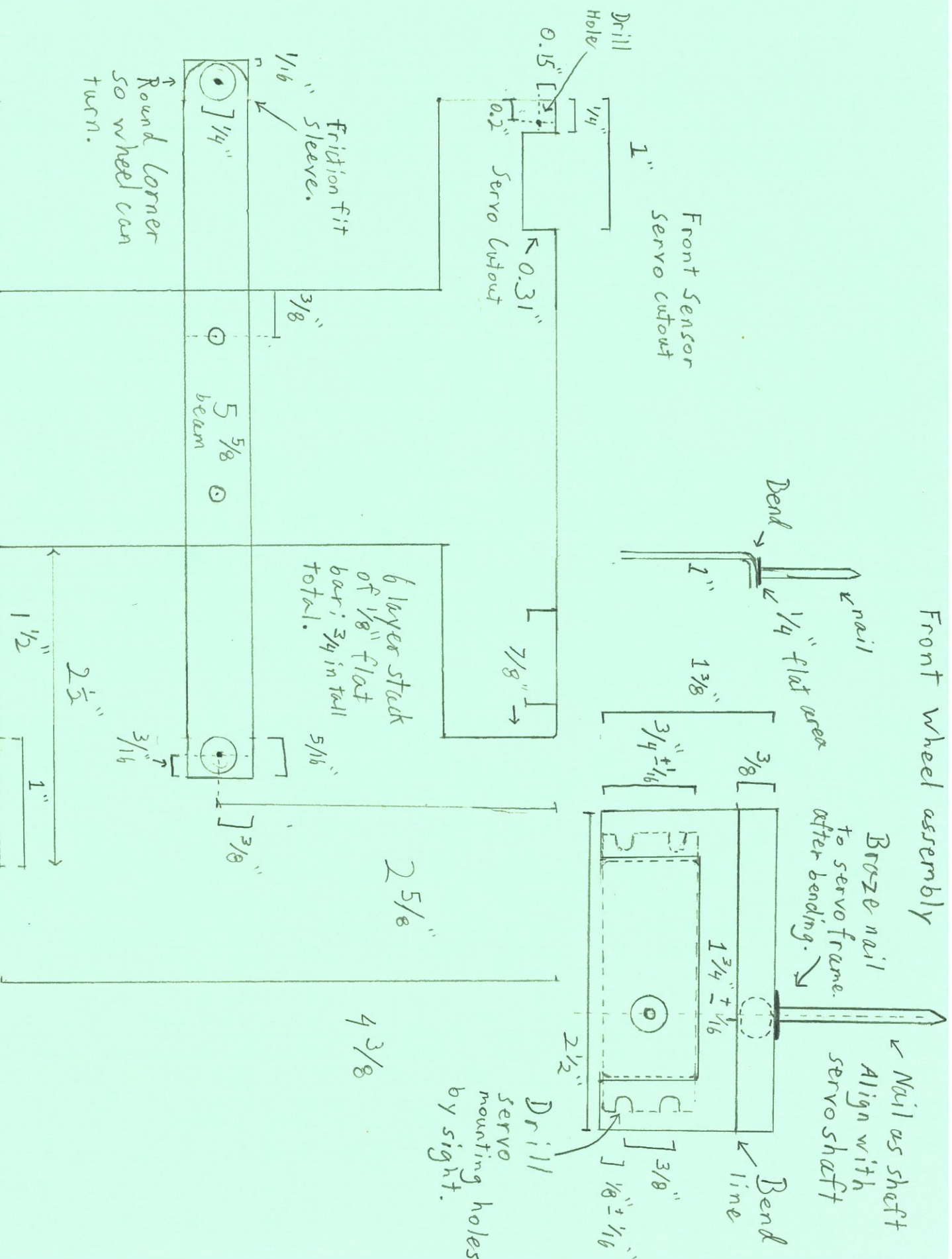


Front wheel assembly



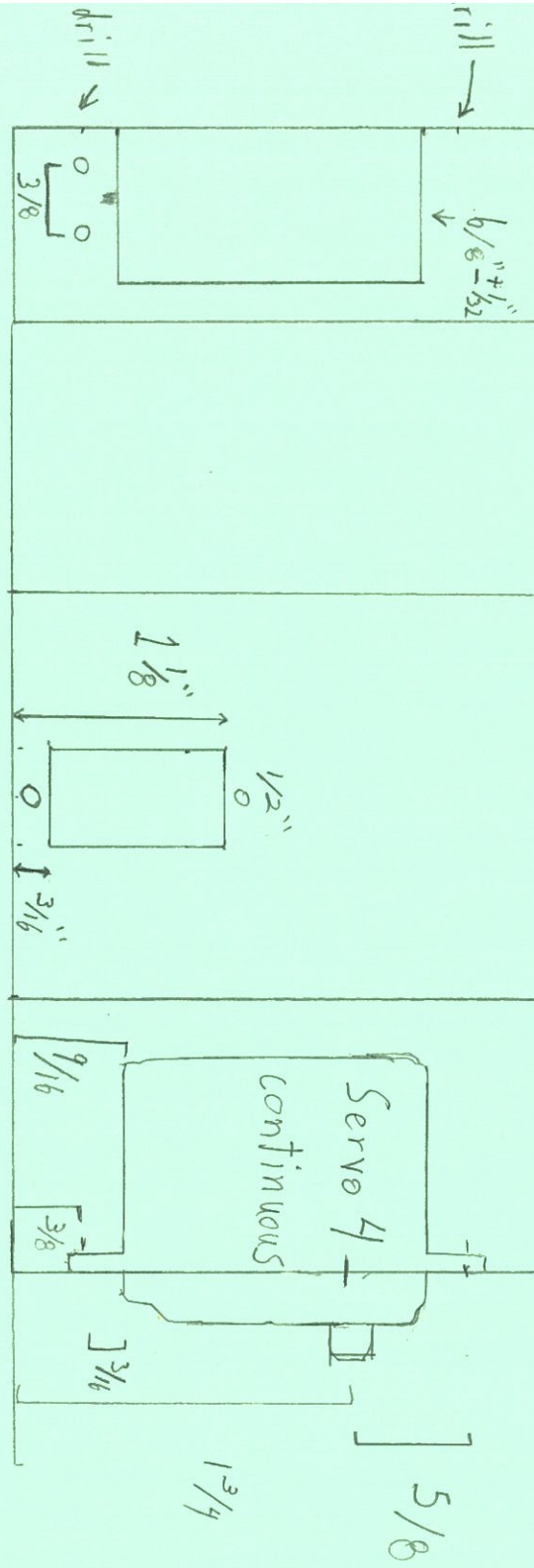
← Nail as shaft
 Align with servo shaft
 ← Bend line
 ← 1/4" flat areas
 ← nail
 ← Bend
 ← 1"

← Bend Line
 Bend to 90°

← Round corner so wheel can turn.
 ← 1/16" sleeve.
 ← Friction fit

← Drill servo mounting holes by sight.

Printed Circuit Board



7 in

Ben Rawstron