

FIXPERTS HIT

A Portable Dressing Assistance Tool

Fixperts: Lottem Shmuel
Aviv Kelty

Mentors

Fixperts: Prof. Gad Charny
Yael Avni

Product Portfolio

Parts .1

:Manufacturing Instructions .2

Wooden poles -2.1

Bending a metal rod -2.2

3D Nylon printed parts -2.3

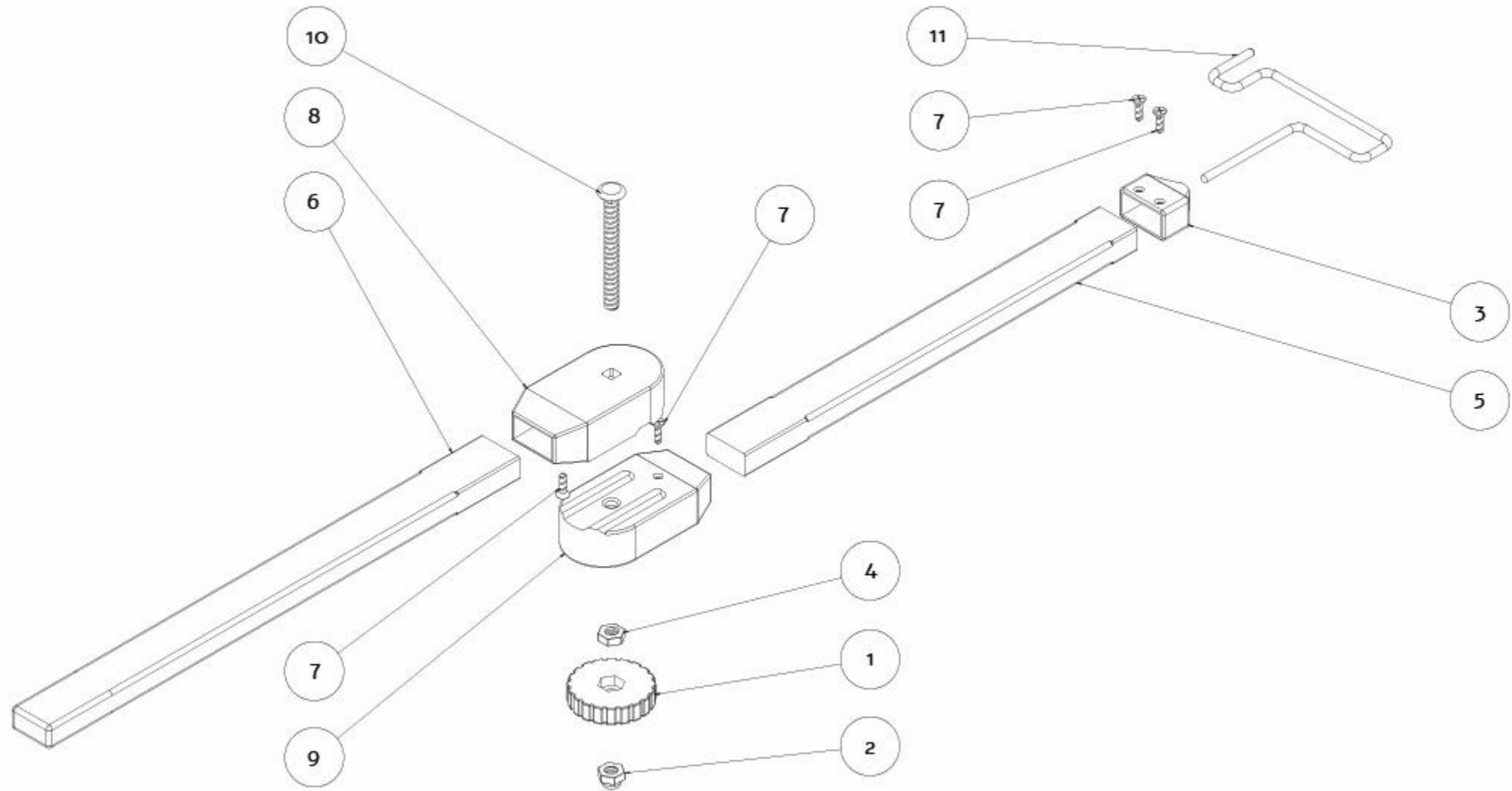
screws & Nuts -2.4

Assembly -2.5

STL files for 3D printing .3

Product portfolio

Parts .1



Manufacturing Instructions .2

Wooden poles 2.1

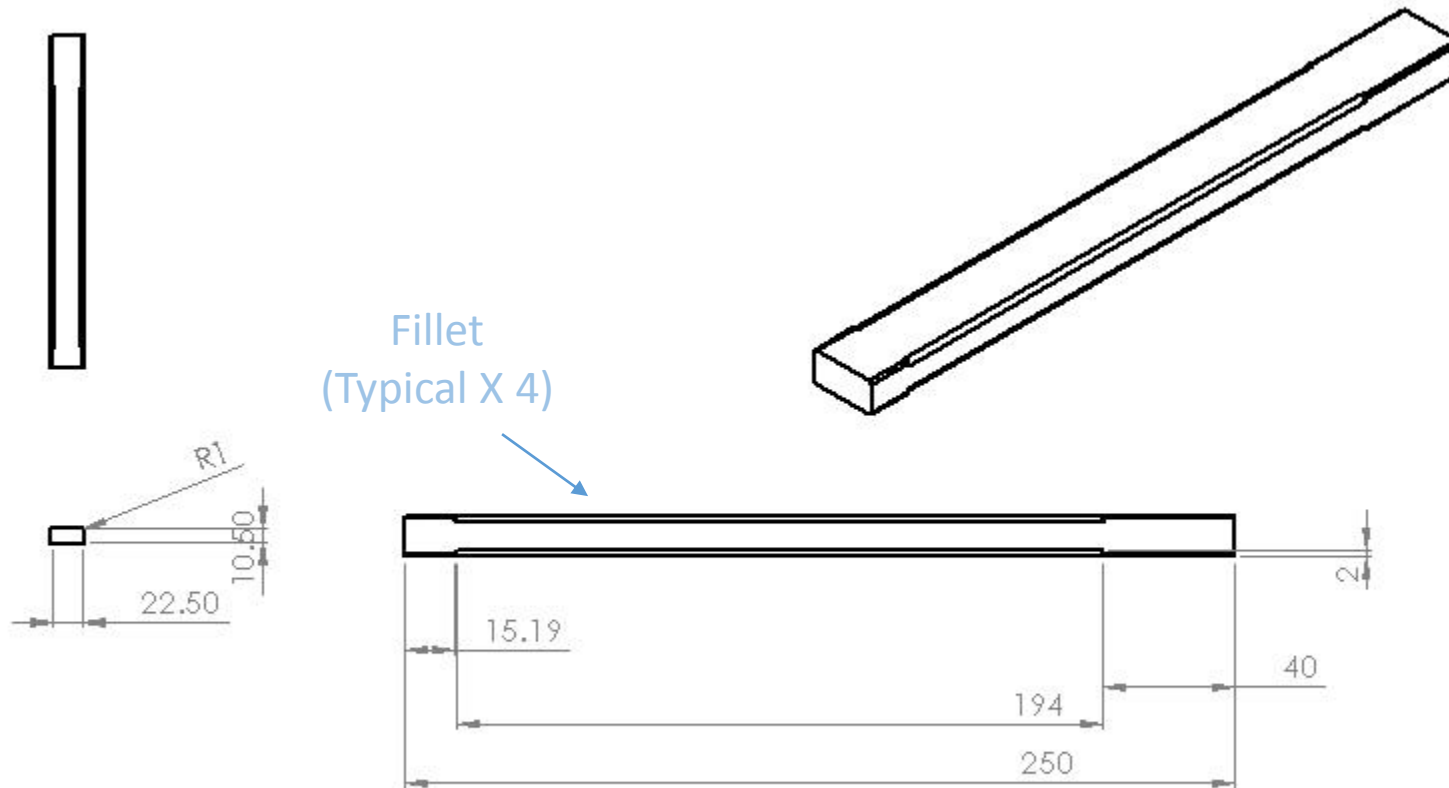
Two wooden poles

Wooden pole 1 [#5]

Take a Pine Wood, cut it into two pieces, With the following dimensions:

:Wooden pole 1 •

Length 25 cm
Width 24.5 cm
Height 12.5 cm

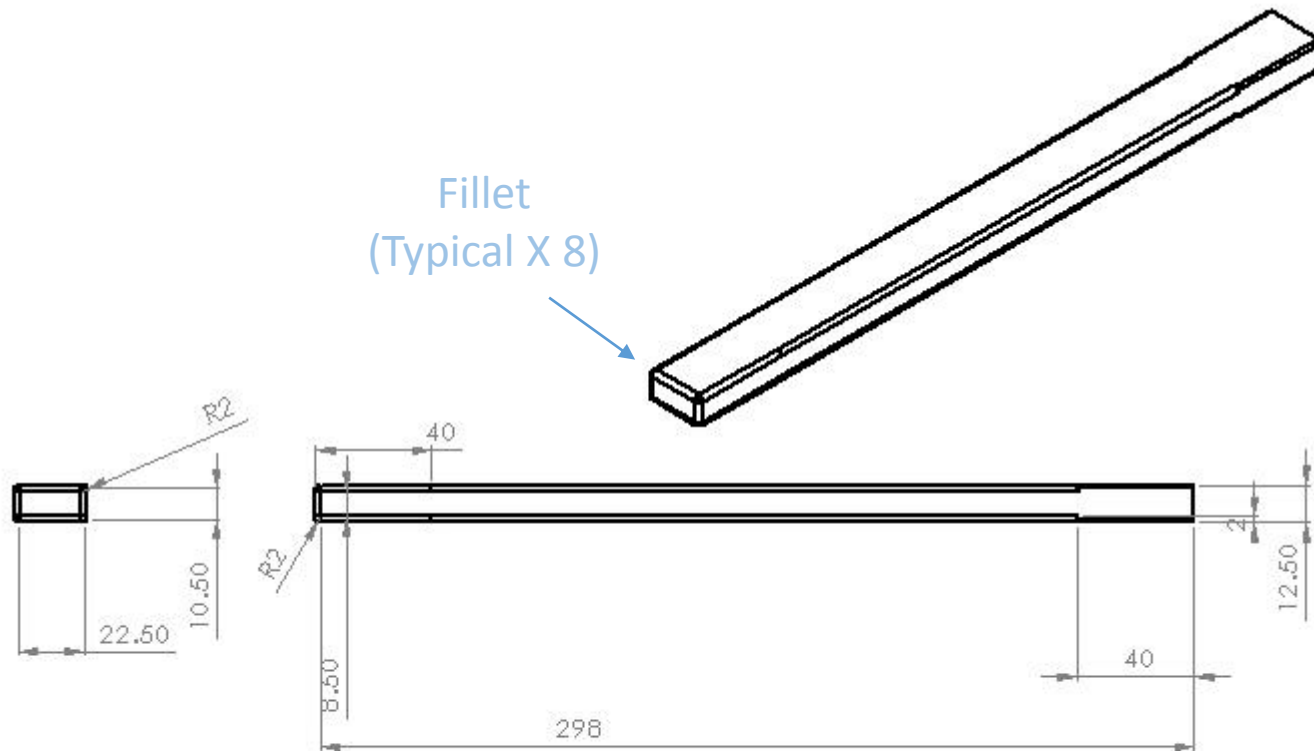


Manufacturing Instructions .2

Wooden poles 2.1

Wooden pole 2 [#6]

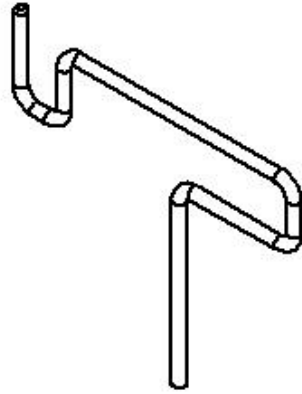
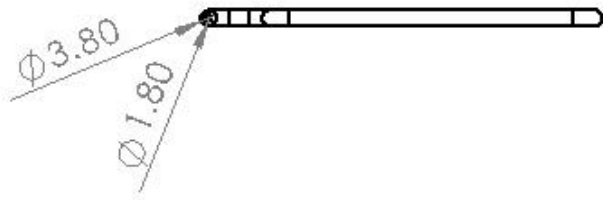
:Wooden pole 2 •



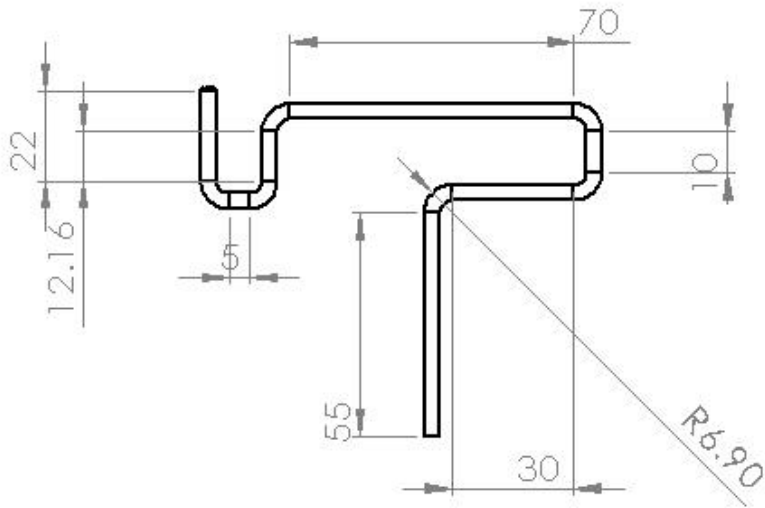
Length 30 cm
Width 24.5 cm
Height 12.5 cm

Manufacturing Instructions .2

[#11] Bending a metal rod 2.2



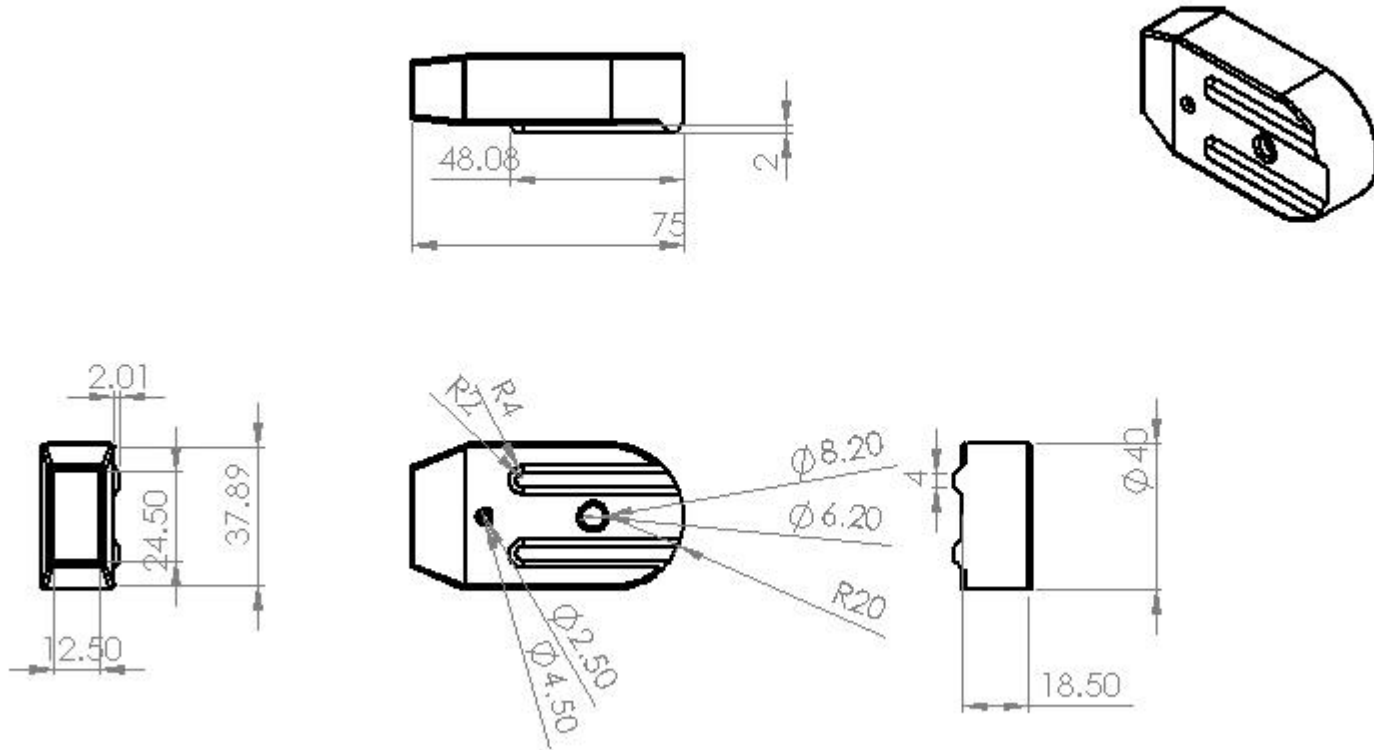
- Take a Metal rod 3-4 mm
- Bend each corner 90° , according to the drawing
- Finish: Plasti Dip Immersion



Manufacturing Instructions .2

3D Nylon printed parts 2.3

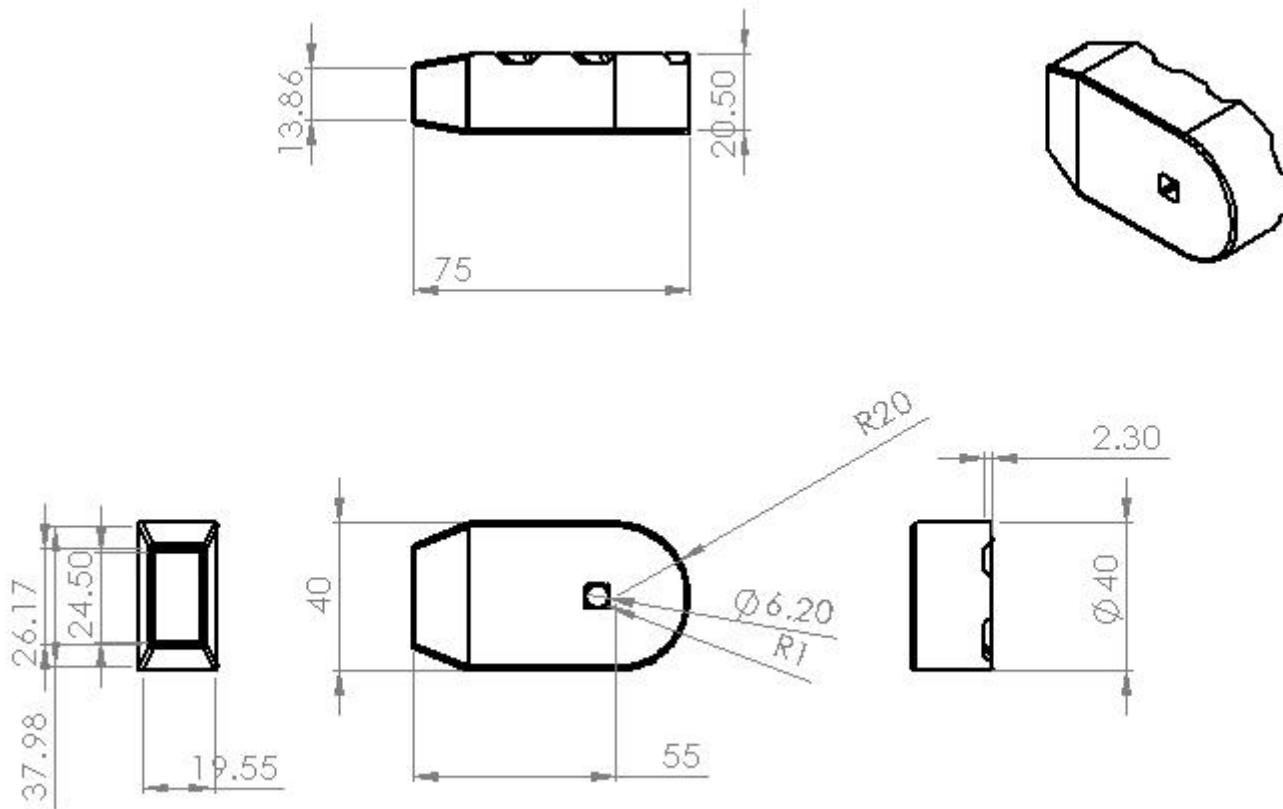
• Male - Part A [#9] •



Manufacturing Instructions .2

3D Nylon printed parts 2.3

:Female -Part B [#8] •

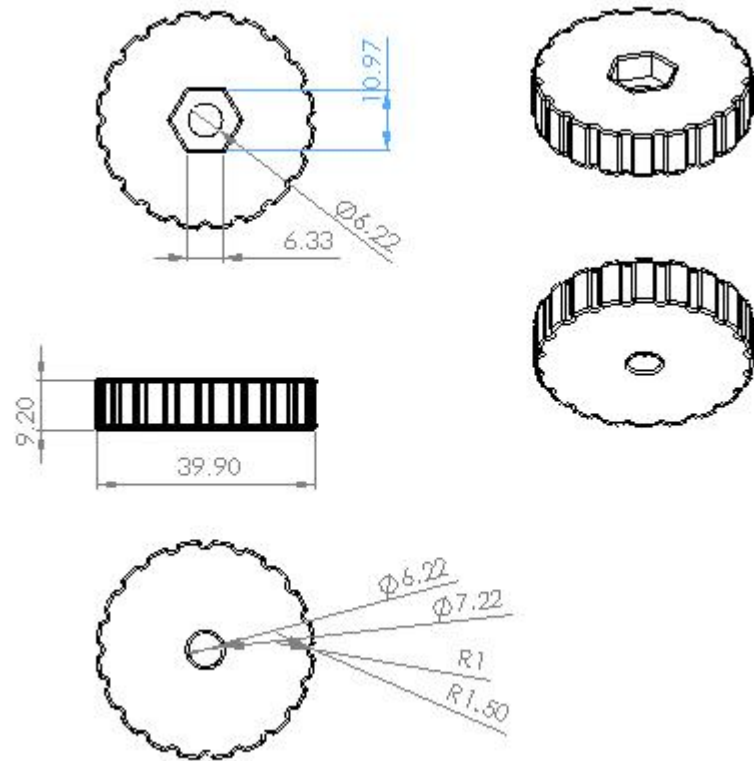


Manufacturing Instructions .2

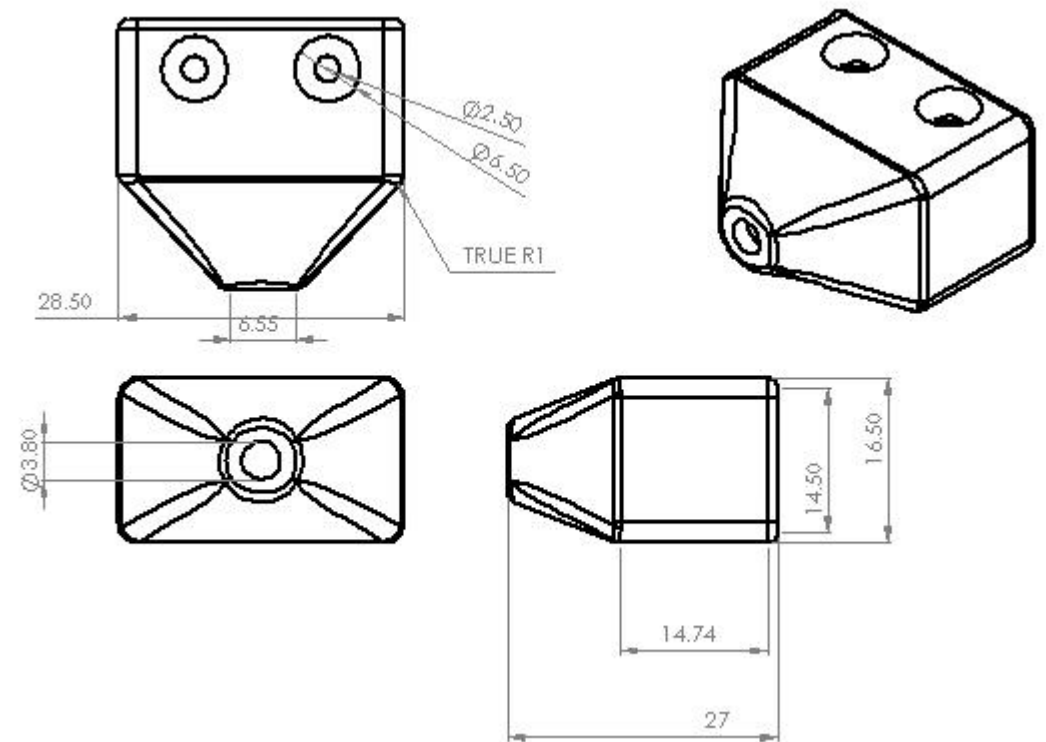
3D Nylon printed parts 2.3

:Circle + Hook •

Circle [#1]



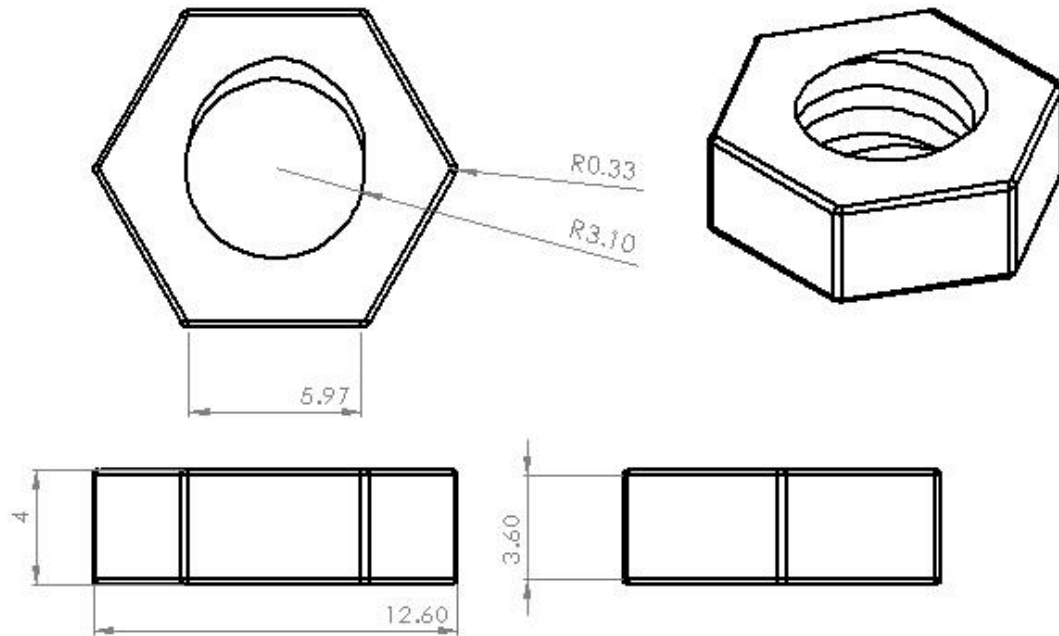
Hook (Keres) [#3]



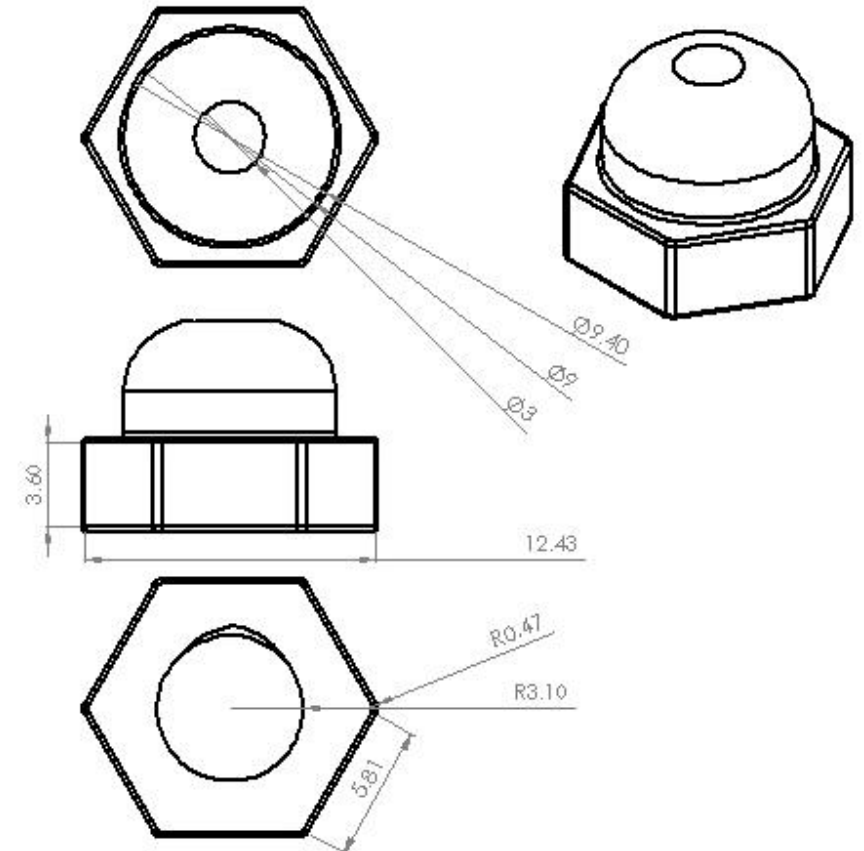
Manufacturing Instructions .2

Screw & Nuts 2.4

Nut 6 mm [#4]



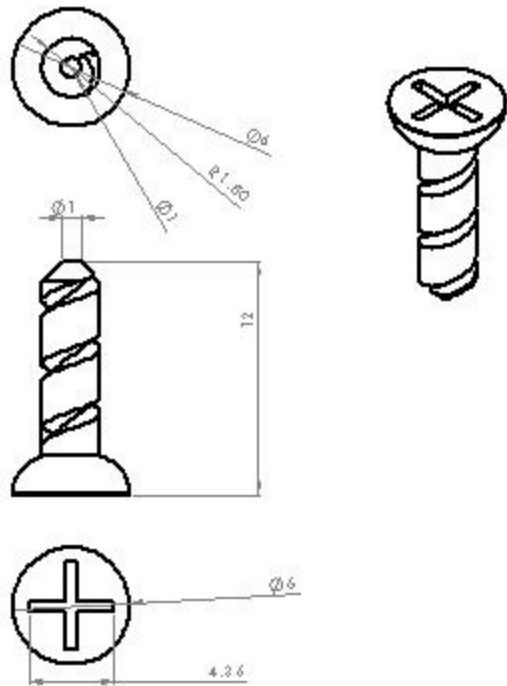
Dome Nut 6 mm [#2]



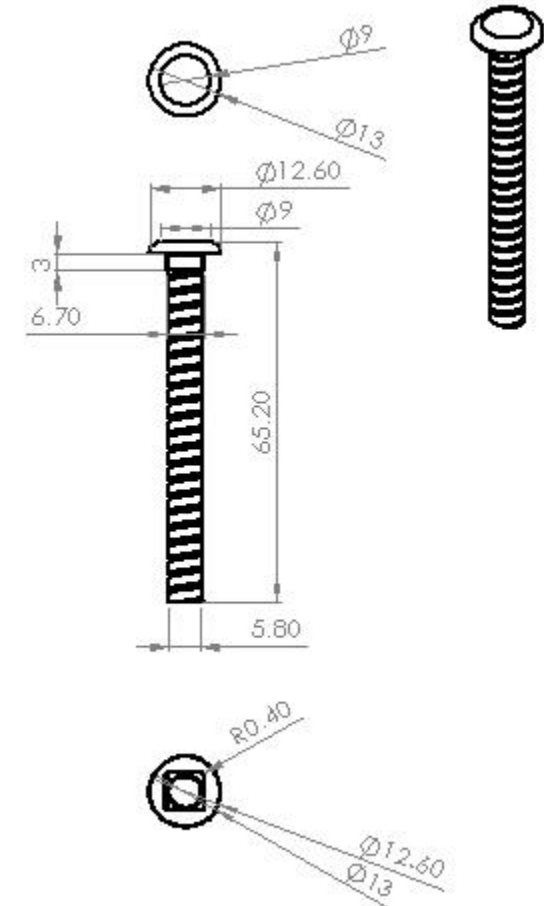
Manufacturing Instructions .2

Screw & Nuts 2.4

Wooden screw - 1.5 mm [#7]



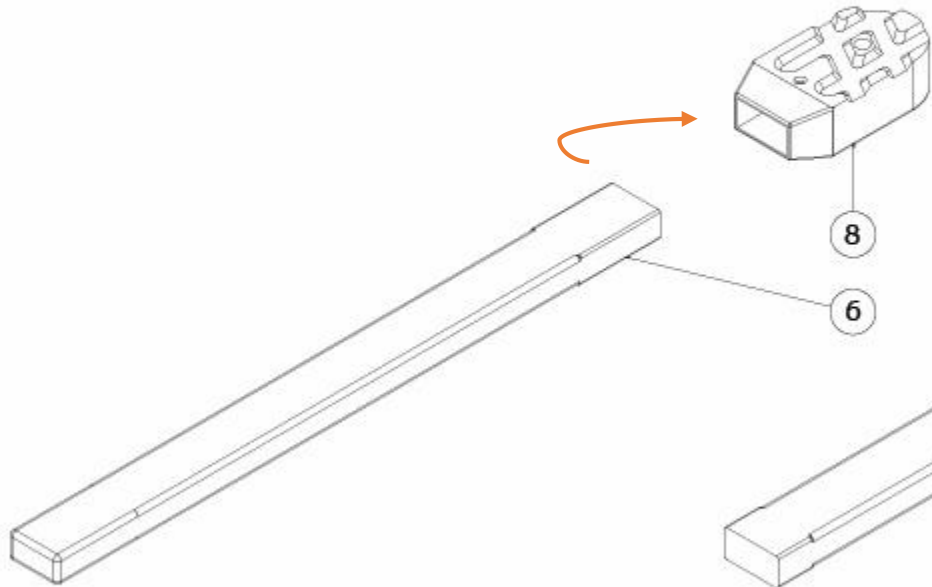
Blind Bolt- 6 mm [#10]



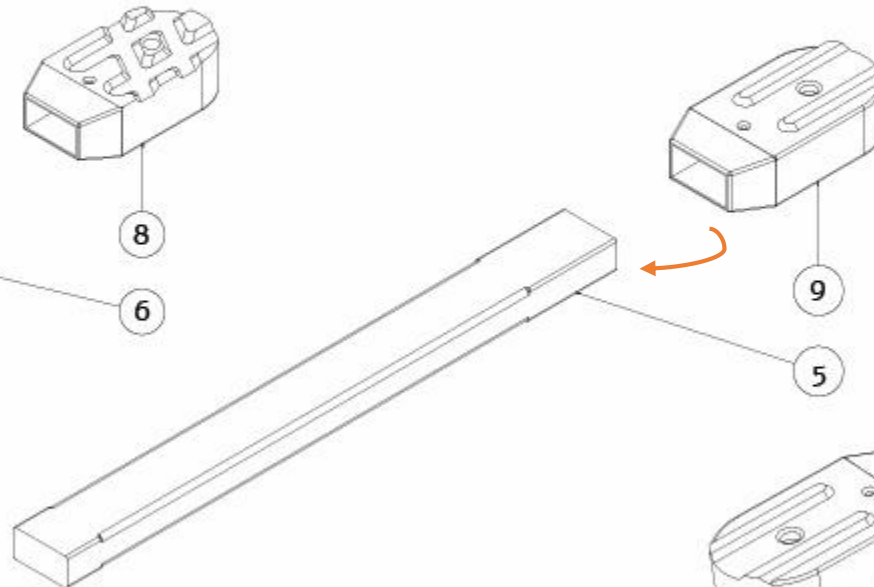
Manufacturing Instructions .2

Assembly Order A to I 2.5

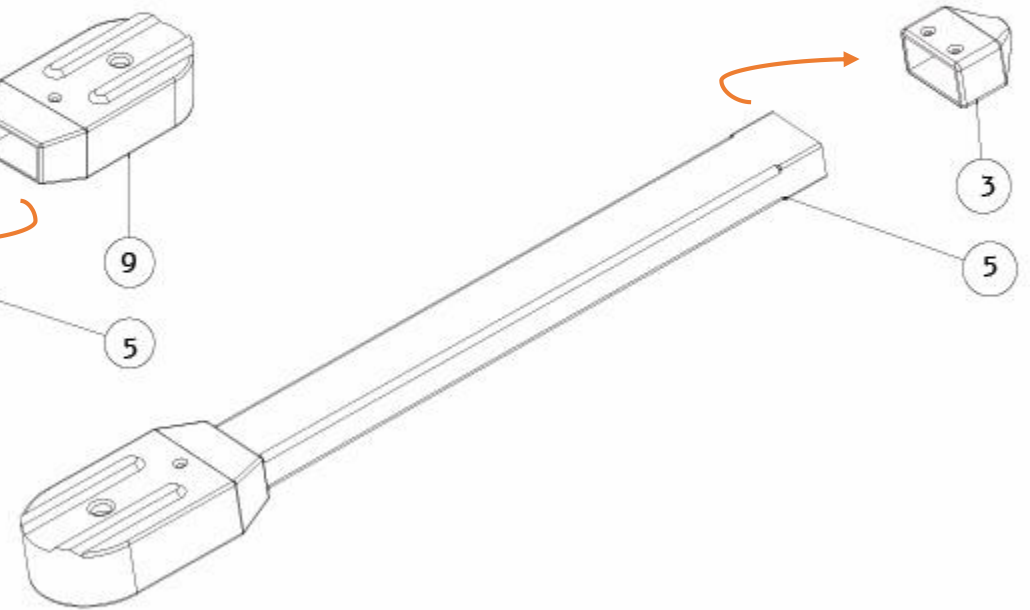
Step A:
insert part 6 into part 8.



Step B:
insert part 5 into part 9.



Step C:
insert part 5 into part 3.

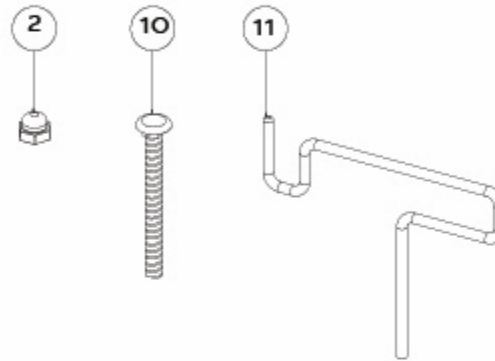


Manufacturing Instructions .2

Assembly Order A to I 2.5

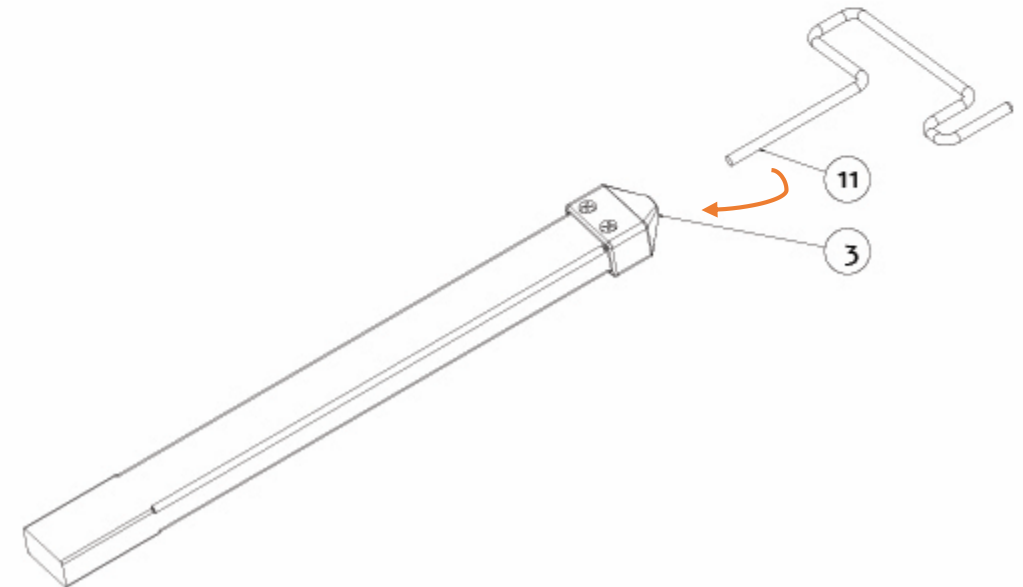
Step E

dip the marked edges of parts 2, 10 and 11 in a "Plasti Dip" container for 10 seconds, take it out and let it dry for 4 hours.



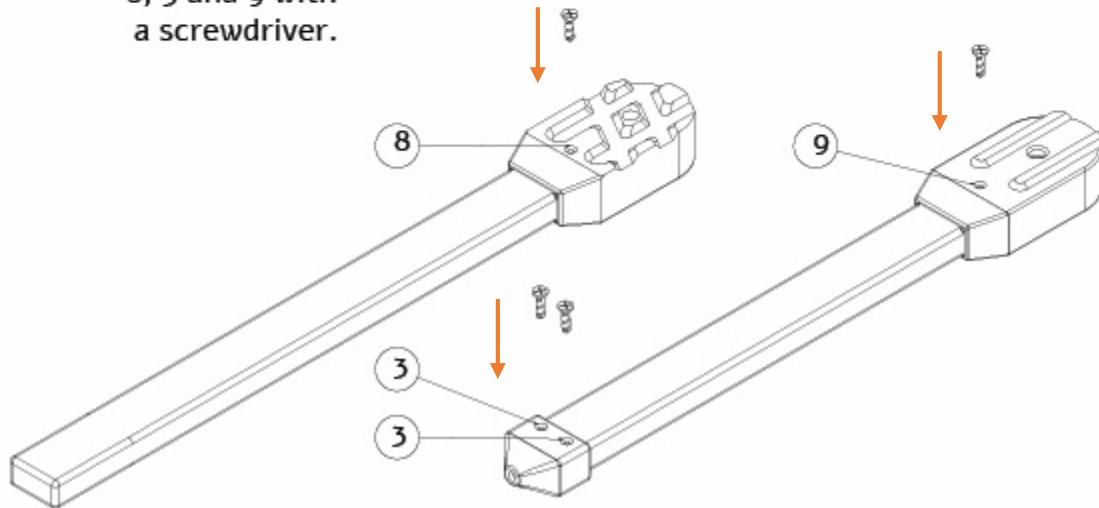
Step F

insert "10 Minute Epoxy" into the marked hole of part 3, then insert part 11 into the same hole and let it dry for 10 minutes.



Step D

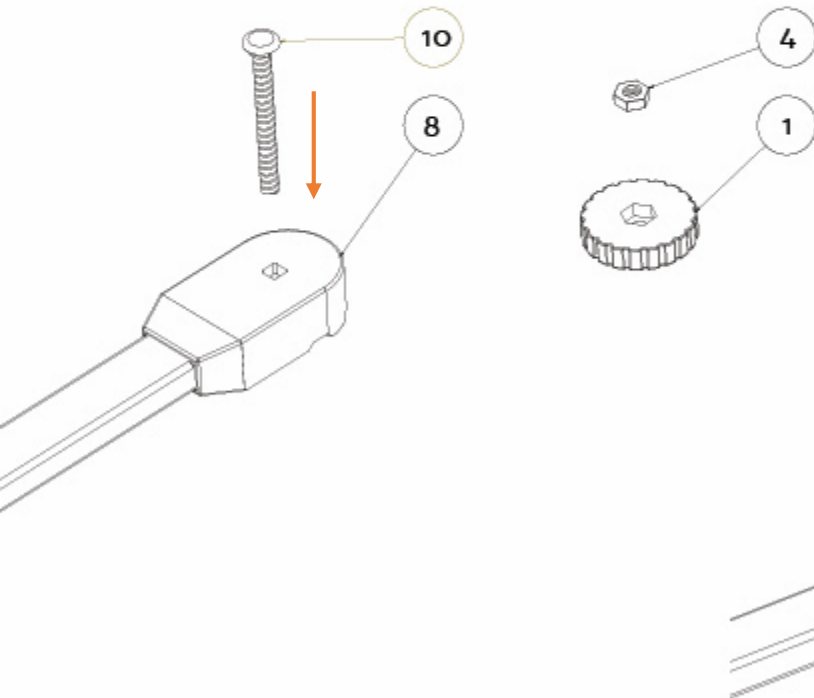
screw the wood screws (part 7) into parts 8, 3 and 9 with a screwdriver.



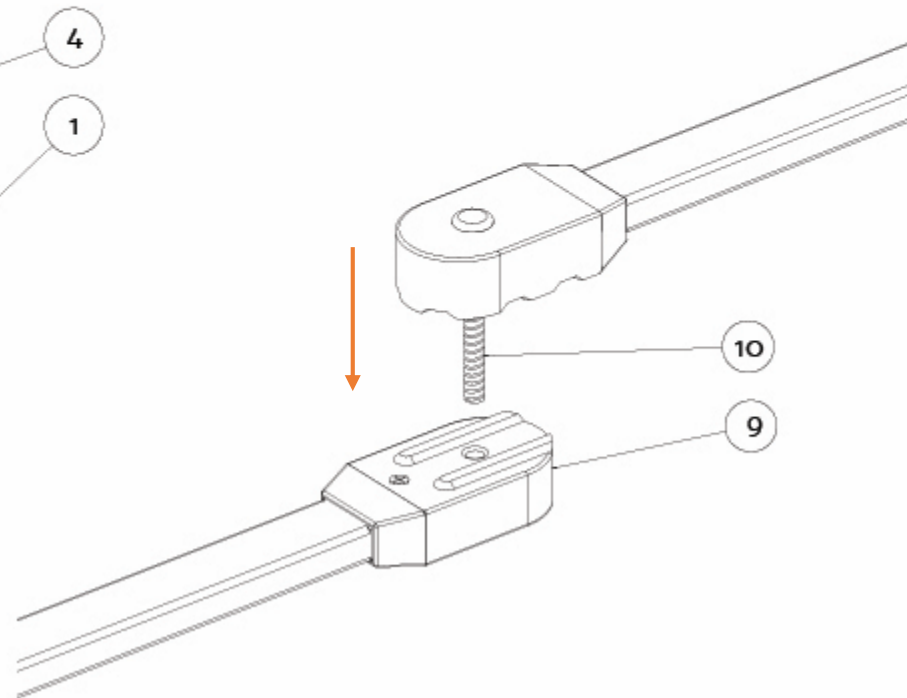
Manufacturing Instructions .2

Assembly Order A to I 2.5

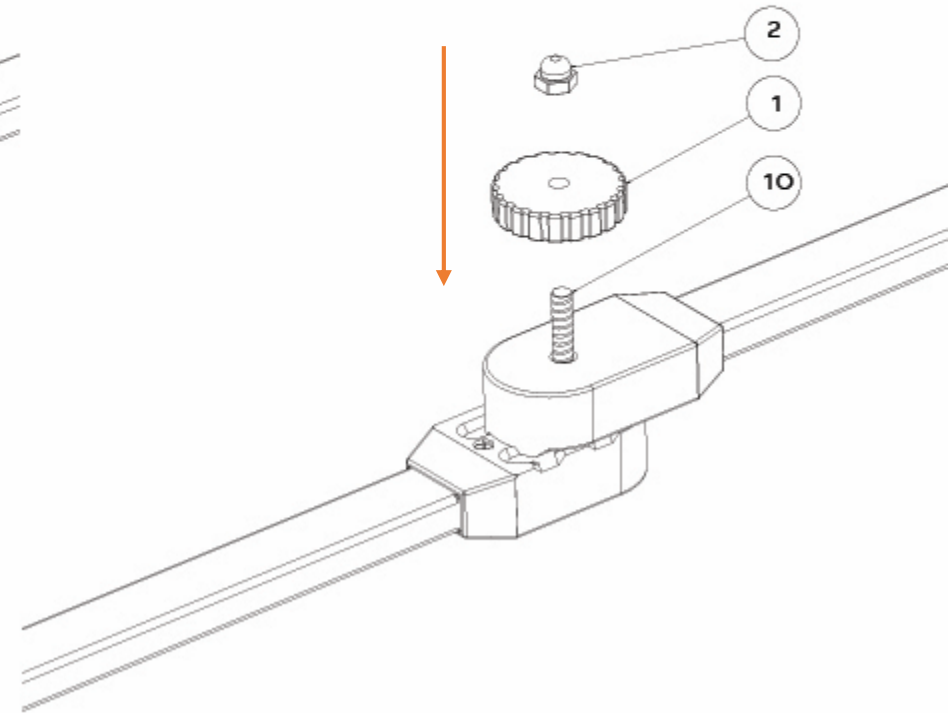
Step G:
apply "10 Minute Epoxy" on the
inner marked side of part 10 and on the
hexagonal groove of part 1.
then insert part 10 into the square
hole of part 8, and part 4 into the
hexagonal groove in part 1.
let it dry for 10 minutes.



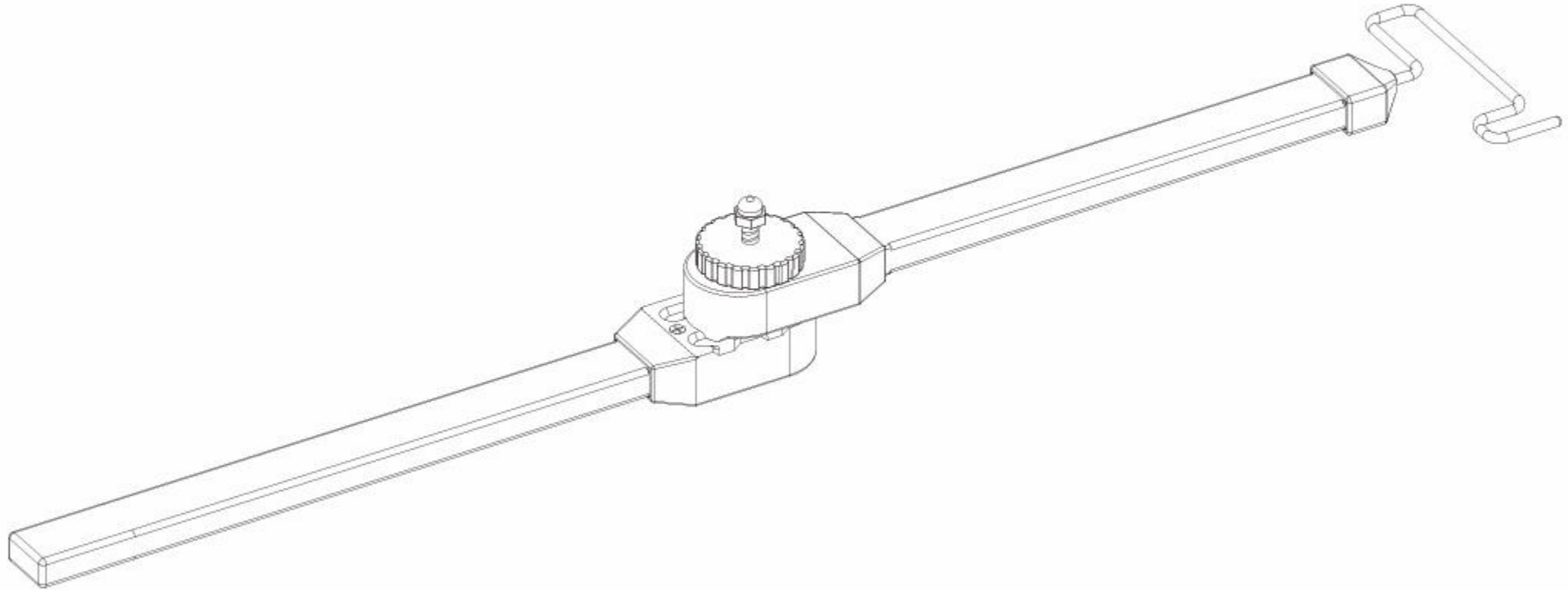
Step H:
insert part 10 into the hole
in part 9.



Step I:
screw part 1 on part 10
and tighten.
insert "10 Minute Epoxy" into the
threaded side of part 2 and screw
it on part 10.
let it dry for 10 minutes.



Your product is ready to use !



STL files for 3D Nylon printing .3



circle.STL

3.3



Wood_female_hinge (1).STL

3.1



KERES.STL

3.4



Wood_male_hinge (1).STL

3.2