

9V - 12V Power Supply

Speaker

- R1 100k
- R2, R3 10k
- R4, R8 1k
- R5 4.7k
- R6, R7 220k
- R9 1M
- R10 3k
- R11 3.3Ω

- C1 10μF
- C2, C7 1000μF

- C3, C4, C5, C6 100nF

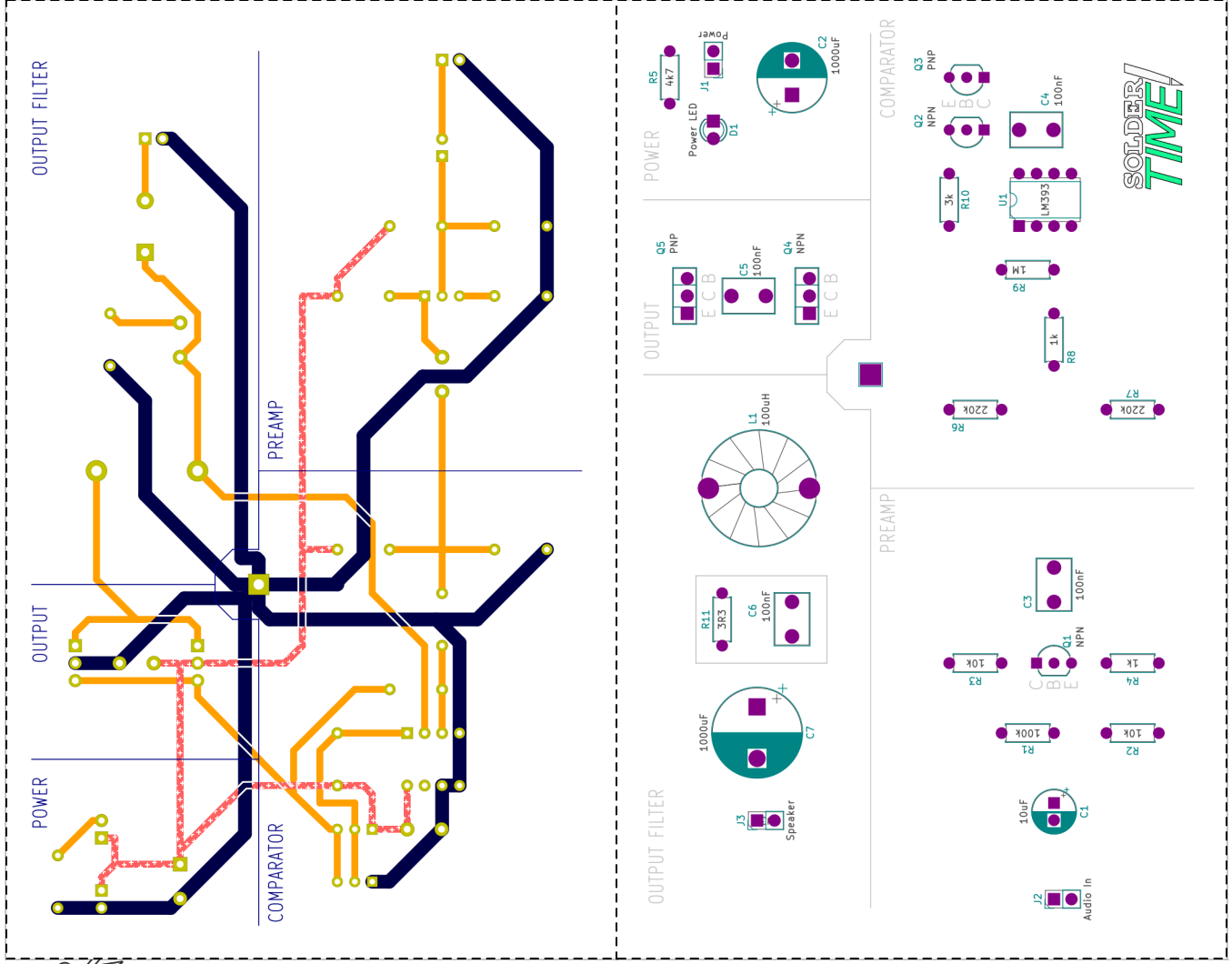
- Q1, Q2 Small Signal NPN
- Q3 Small Signal PNP
- Q4 Medium Power NPN
- Q5 Medium Power PNP

- U1 LM393

- L1 100μH

- D1 LED

- J1 Power Connector
- J2 Audio In
- J3 Speaker Connector



Handwritten signature or mark.