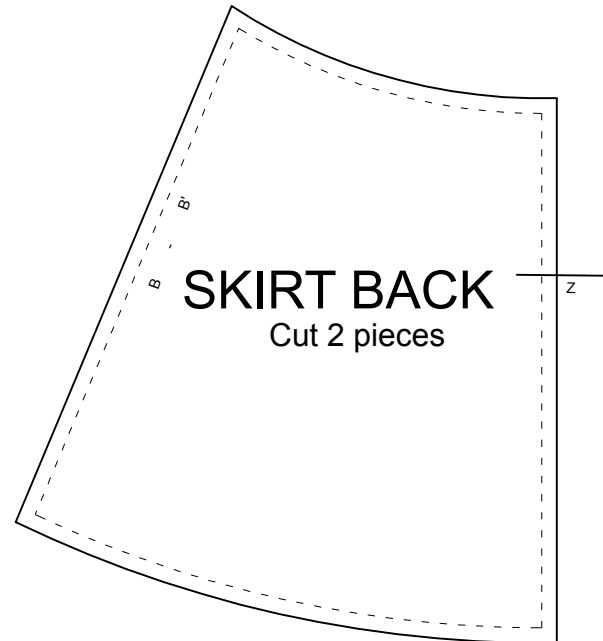
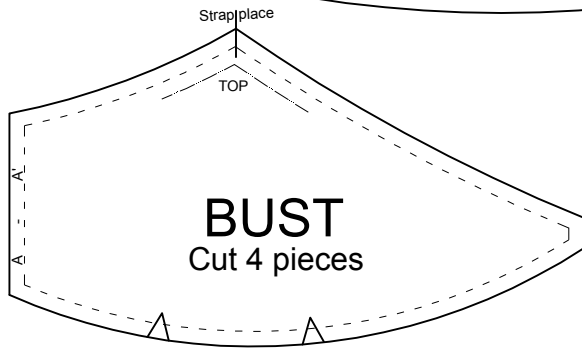




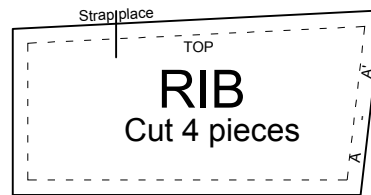
**SKIRT FRONT**  
Cut 1 piece



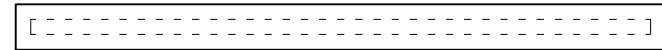
**SKIRT BACK**  
Cut 2 pieces



**BUST**  
Cut 4 pieces



**RIB**  
Cut 4 pieces



**STRAP**  
Cut 2 pieces



**BELT SHORT**  
Cut 1 piece



**BELT LONG**  
Cut 1 piece

**BELTED BLOUSE**

cm       
inch

Scale 1:500