

# Paint Spinner

Component List		
No.	Description	Qty
1	Rubber sanding disk backing pad 125mm	1
2	Cordless Drill	1
3	Strap hinge	1
4	700 X 700 X 12 mm Ply wood BC	1
5	Cable Tie	2
6	Ply wood BC strips	As required
7	Cardboard	As required
8	Woodscrews 20 mm	As required
9	Staple gun / Drawing pins / A3 paper / Acrylic paint	As required

Make a cardboard box 700 x 700 mm and higher than the spinning table to catch paint spray.

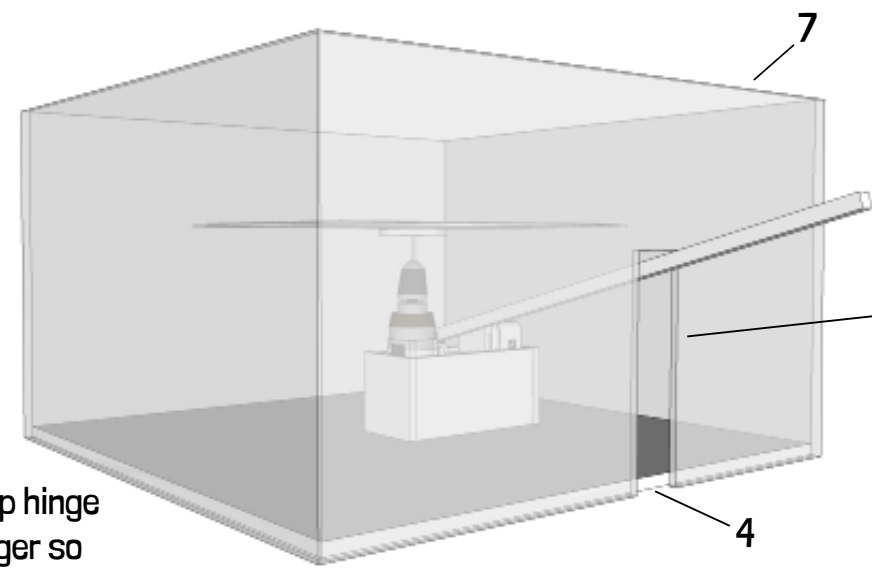
Cut and tape box to suit.

Staple bottom of cardboard box to Ply base.

Cut access hole for drill trigger.

(Note – do not cut higher than spray zone or you'll decorate yourself!)

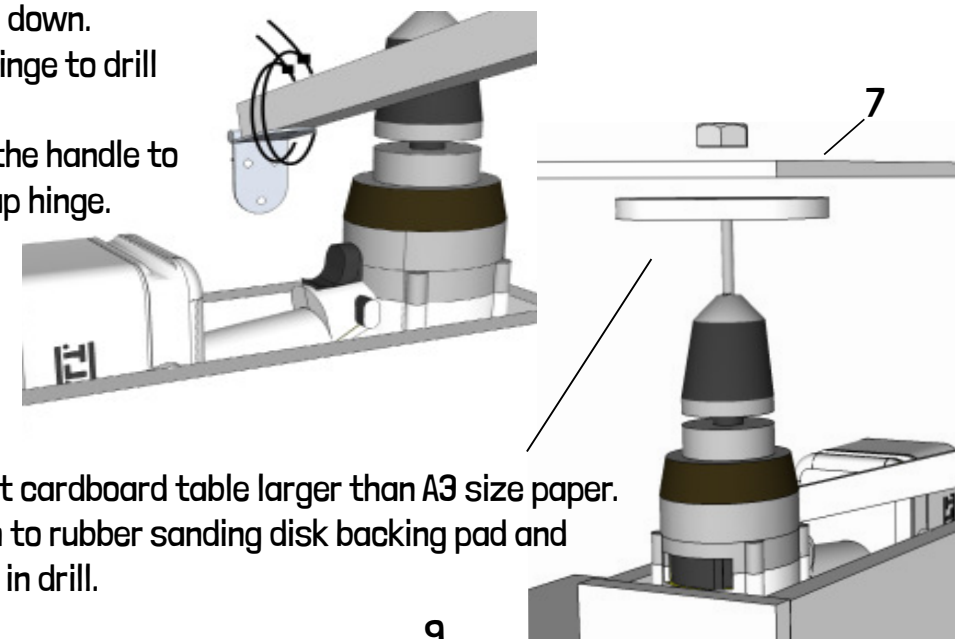
Staple bottom of cardboard to Ply base.



Position strap hinge over drill trigger so contact is made when pressed down.

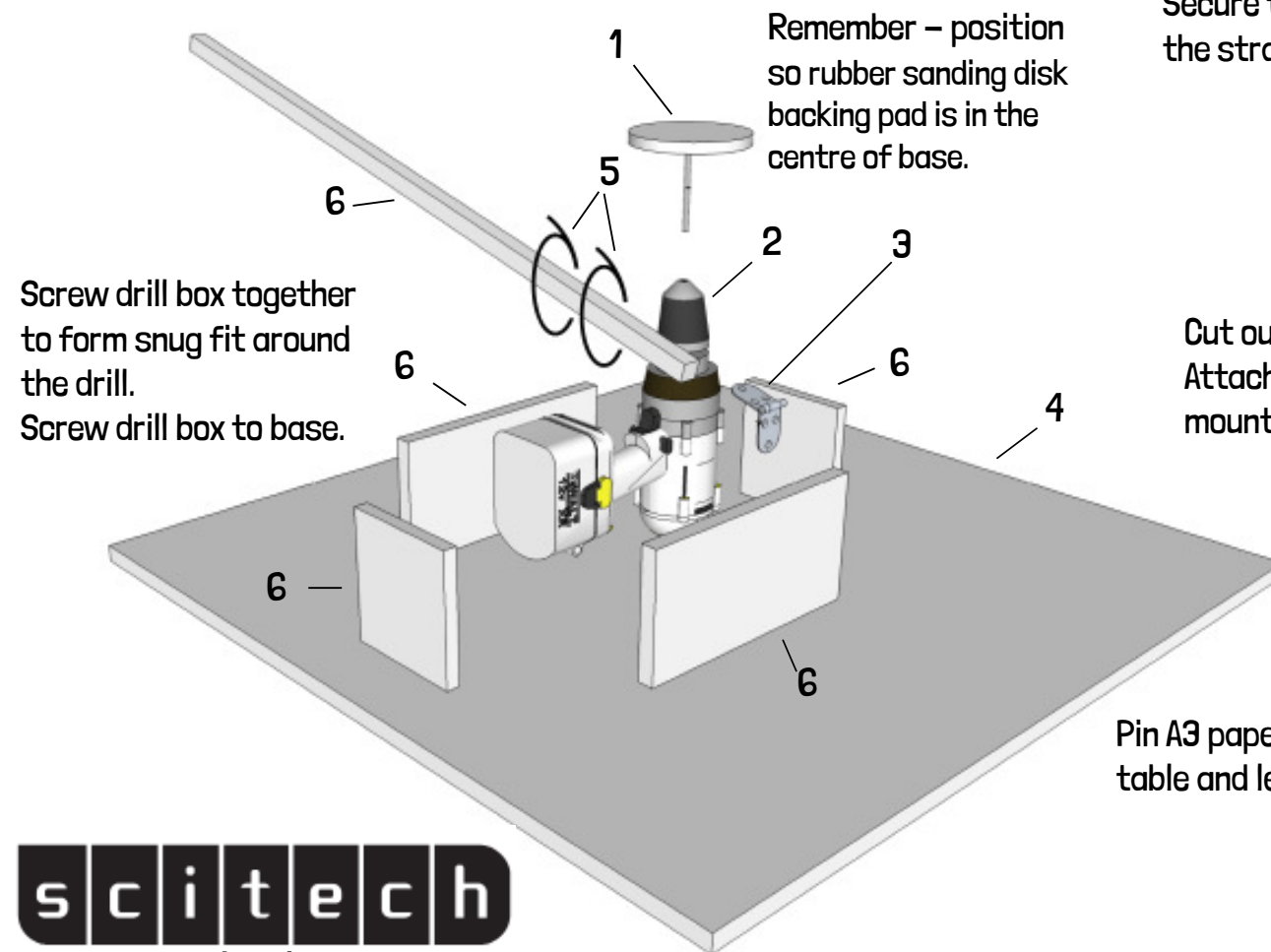
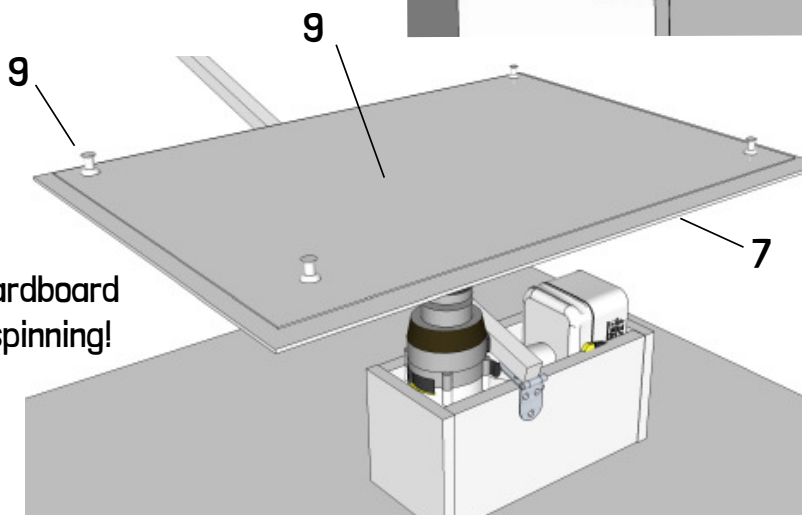
Screw hinge to drill box.

Secure the handle to the strap hinge.



Cut out cardboard table larger than A3 size paper. Attach to rubber sanding disk backing pad and mount in drill.

Pin A3 paper onto cardboard table and let's get spinning!



Screw drill box together to form snug fit around the drill.  
Screw drill box to base.

Remember – position so rubber sanding disk backing pad is in the centre of base.

## Wood Cutting List

12mm Plywood BC

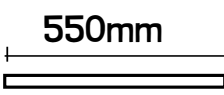
Cut to suit width of drill / height of drill button

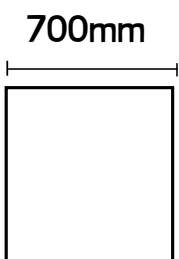
 No.2 Qty, 2

Cut to suit length of drill / height of drill button

 No.4 Qty, 2

Cut to suit width of strap hinge

 550mm No.6 Qty, 1

 700mm No.7 Qty, 1  
700mm