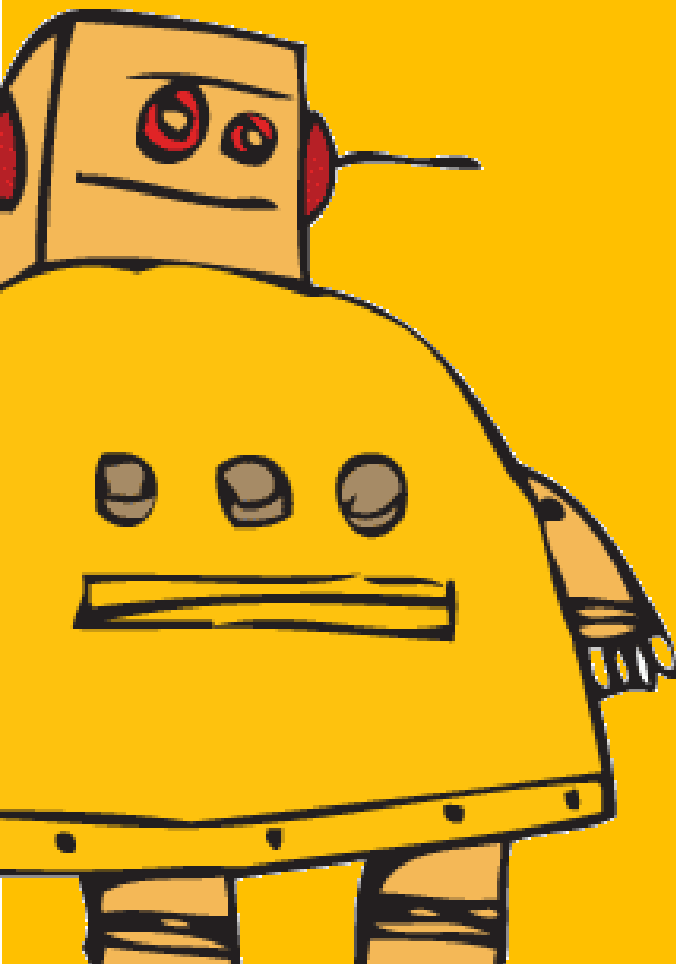


PAPER-MADE STIRLING ENGINE MODEL

How to make

Pieces manual



by

F _ A _ B _ A _ S

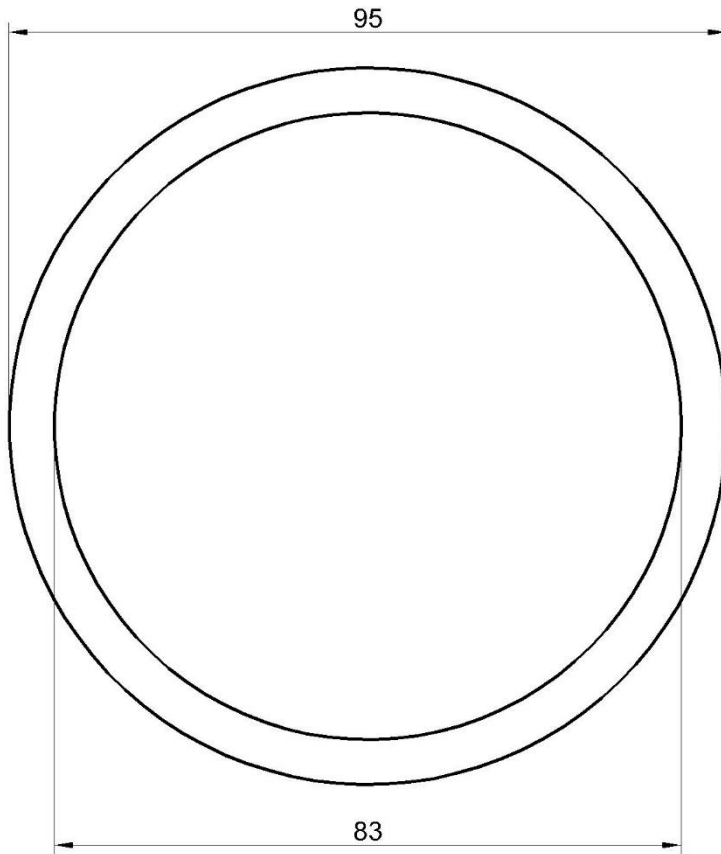
Consider...

- * all measurements are in millimeters
- * to strengthen and paste the paper I used superglue
 - * you can use the same measurements
or use them as a reference

Piece Nº

1

TOP VIEW



x1

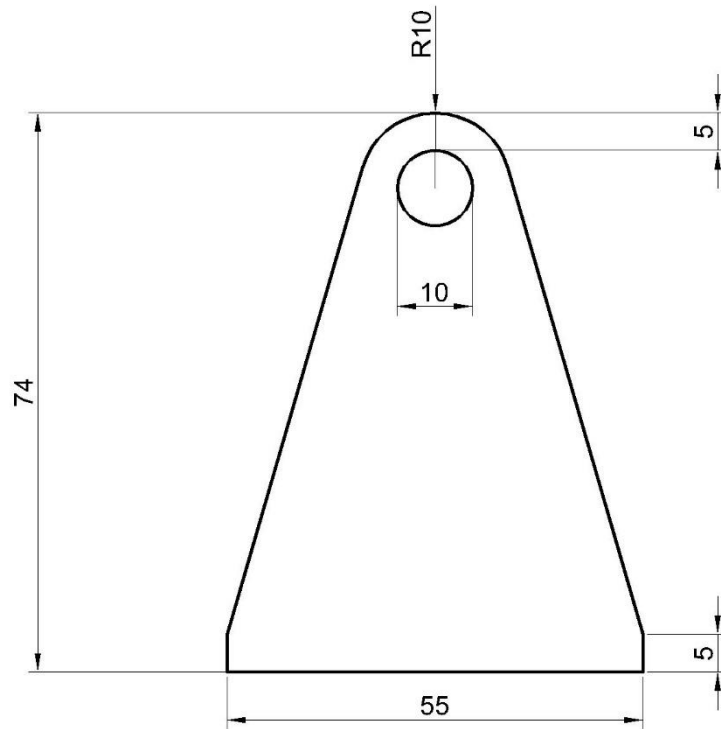
HEIGHT: 12

Use strips of paper around an object with the necessary diameter, and use superglue for the entire circumference



Piece N°

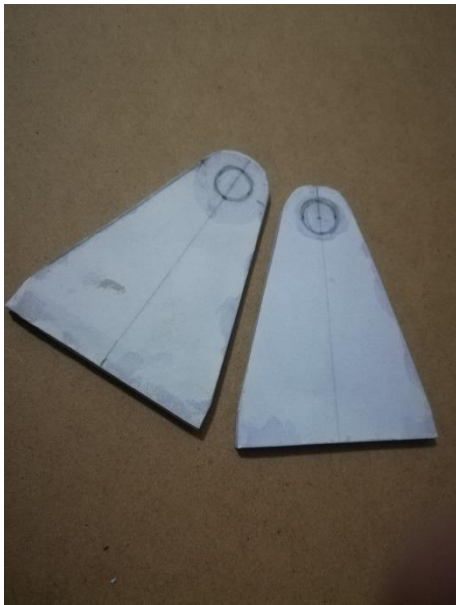
2



x2

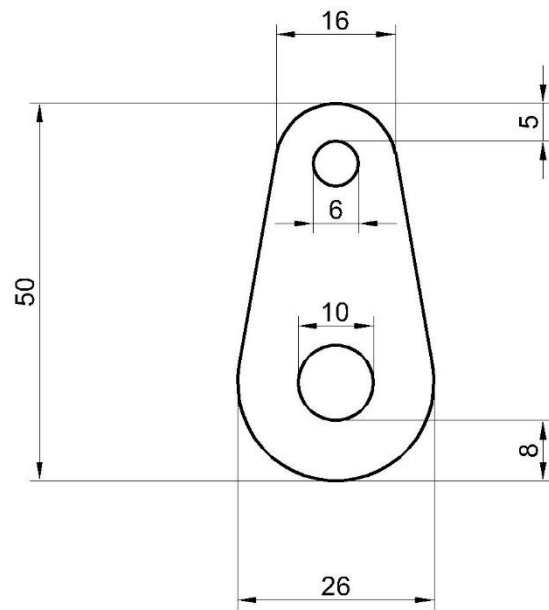
THICKNESS: 3

I pasted some leaves until I got the necessary thickness, I used a dremel to make the hole



Piece Nº

3

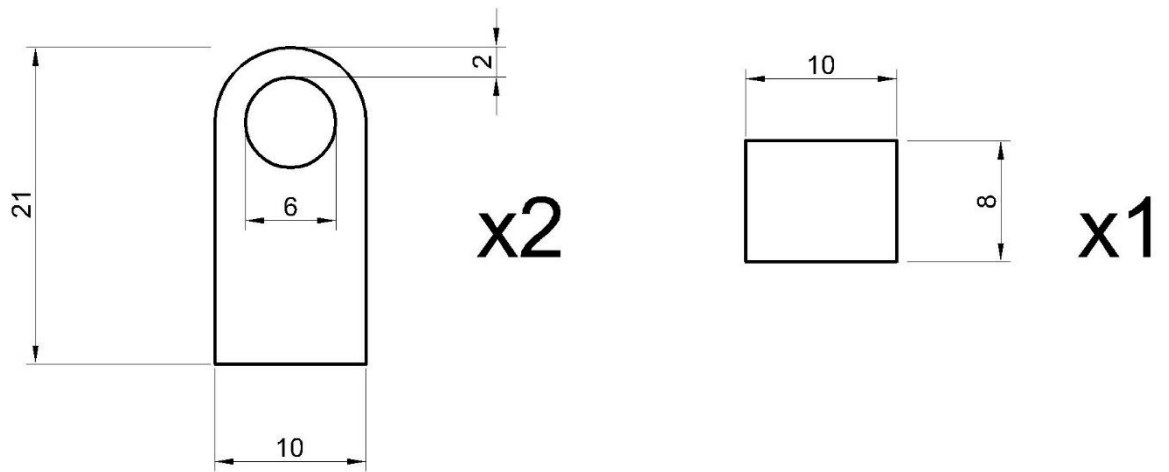


x2

THICKNESS: 2

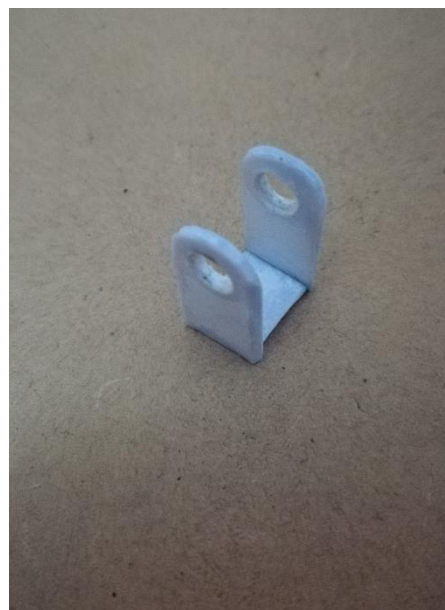
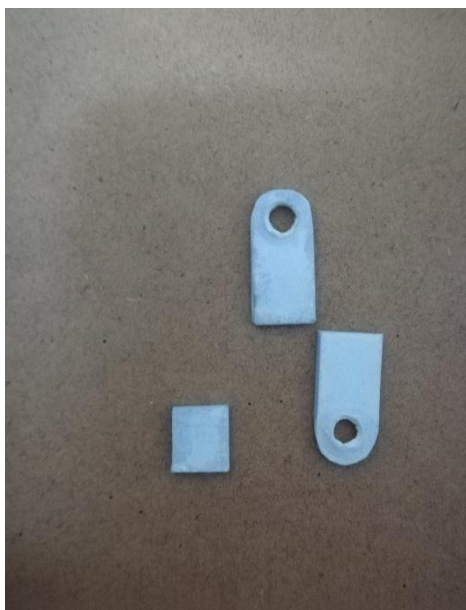
usé el mismo proceso que el paso anterior...





THICKNESS: 1

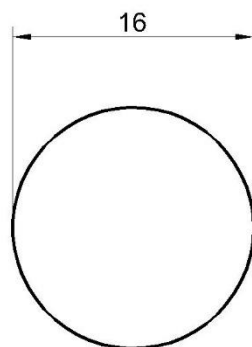
Same process :)
 then you must paste the three pieces in this way



Piece Nº

5

TOP VIEW



x2

HEIGHT: 10

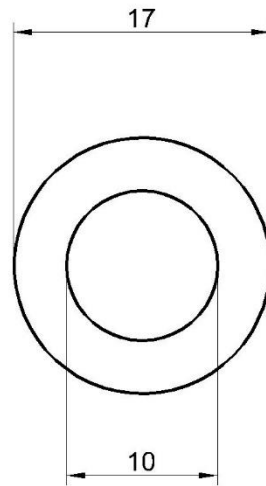
You must make a solid roll, then you have to seal it (you can use superglue+ sodium bicarbonate), the air should not pass through this



Piece №

6

TOP VIEW



x1

HEIGHT: 12

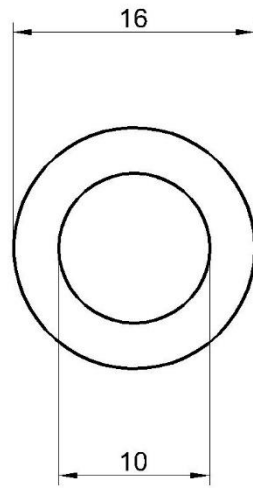
Make a ring with the paper and reinforce it with superglue



Piece №

7

TOP VIEW



x1

HEIGHT: 10

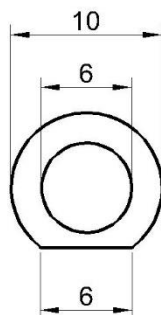
same...



Piece N°

8

TOP VIEW



x2

HEIGHT: 13

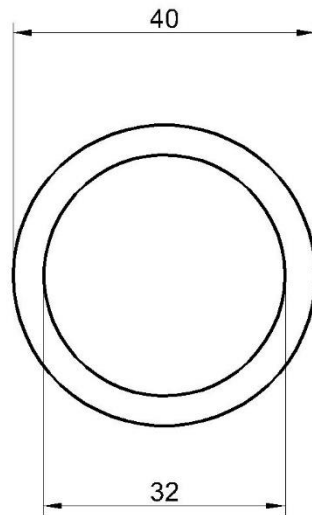
Same process...
But now you have to sand a little to flatten one side



Piece N°

9

TOP VIEW



x1

HEIGHT: 95

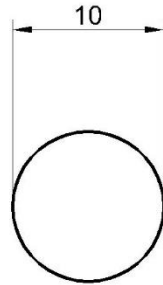
now you must make a paper pipe
try to make the internal walls as smooth and regular as possible



Piece N°

10

TOP VIEW



x1

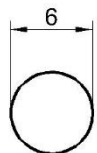
HEIGHT: 46

Make a solid rod..
the process is the same for the rest of the pieces

Piece N°

11

TOP VIEW



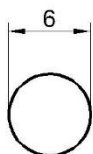
x1

HEIGHT: 95

Piece N°

12

TOP VIEW



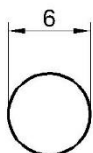
x1

HEIGHT: 40

Piece N°

13

TOP VIEW



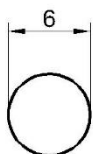
x2

HEIGHT: 45

Piece N°

14

TOP VIEW



x6

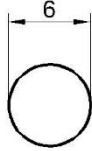
HEIGHT: 33

Piece N°

15

TOP VIEW

Note: this piece should have a hole of approximately 3 mm



x1

HEIGHT: 15

Piece N°

16

TOP VIEW



x2

HEIGHT: 22