

General Settings Infill

Reinforcement

Material
Onyx

Reinforcement Material
Fiberglass

• Configure fiber settings in X-Ray View.

Printer Type
Desktop Series (Onyx, Mark Two)

Orientation Manual Rotation

X	90	Y	85.91	Z	94.09
---	----	---	-------	---	-------

Lock Orientation No

Cloud Slicing Yes

General Settings Infill

Reinforcement

Layer Height (mm)
0.100

Original Units
Metric

Scale
1

Use Supports Yes

Supports Direction
0

Raise Part No

Expand Thin Features No

Use Brim No

Stagger Seams No

General Settings Infill

Reinforcement

Fill Pattern
Triangular Fill

Fill Density
28 37% 55

Roof & Floor Layers 0.40mm

1 2 3 **4** 5 6 7 8 9 10

Wall Layers 0.80mm

1 **2** 3 4 5 6 7 8 9 10 11 12 13 14 15

Part Details

Add Description...

Dimensions
64.4mm x 12.5mm x 8.0mm

Print Time ?
50m

Final Part Mass ?
2.91g

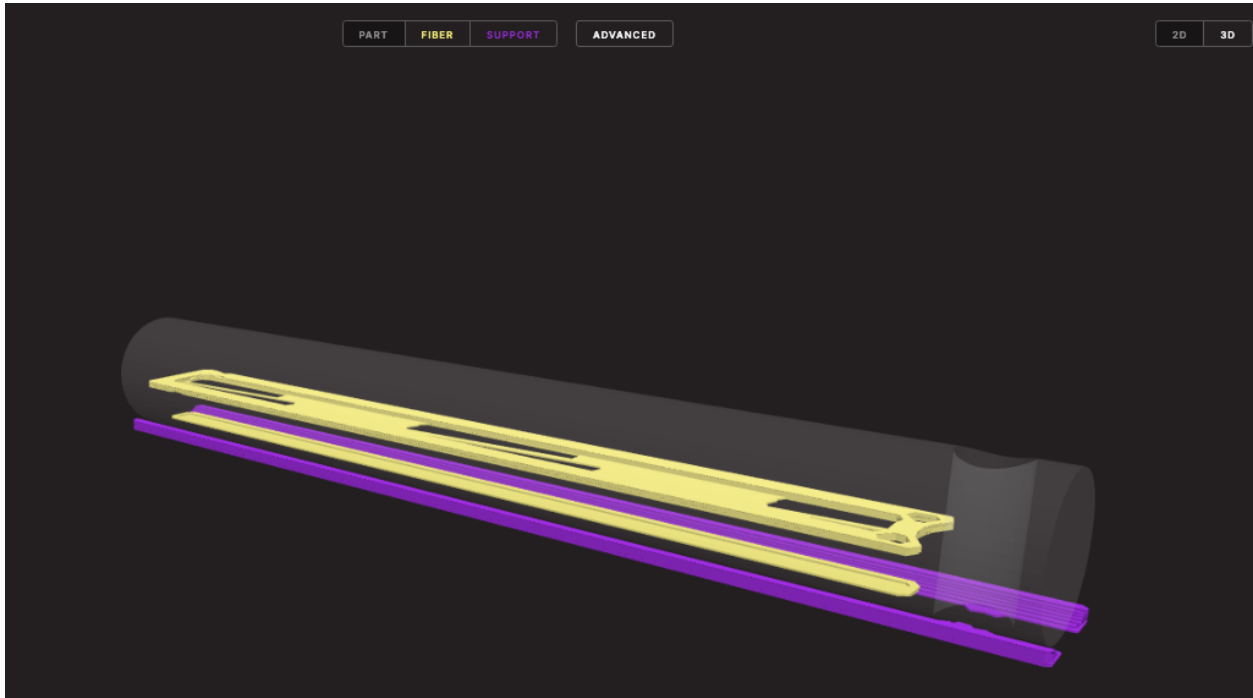
Plastic Volume ?
3.41 cm³

Fiber Volume
0.11 cm³

Material Cost
0.99 USD

Versions >

Print Jobs >



Add Fiber	
Contains 4 layers.	3.40 mm - 3.80 mm
Fiber Pattern Type	Entire Group ▾
Fiber Fill Type	Isotropic Fiber ▾
Concentric Fiber R...	2
Start Rotation Per...	
Fiber Angles	0, 45, 90, 135

Add Fiber	
Contains 4 layers.	0.40 mm - 0.80 mm
Fiber Pattern Type	Entire Group ▾
Fiber Fill Type	Isotropic Fiber ▾
Concentric Fiber R...	2
Start Rotation Per...	
Fiber Angles	0, 45, 90, 135

Add Fiber	
Contains 4 layers.	7.20 mm - 7.60 mm
Fiber Pattern Type	Entire Group ▾
Fiber Fill Type	Isotropic Fiber ▾
Concentric Fiber R...	2
Start Rotation Per...	
Fiber Angles	0, 45, 90, 135

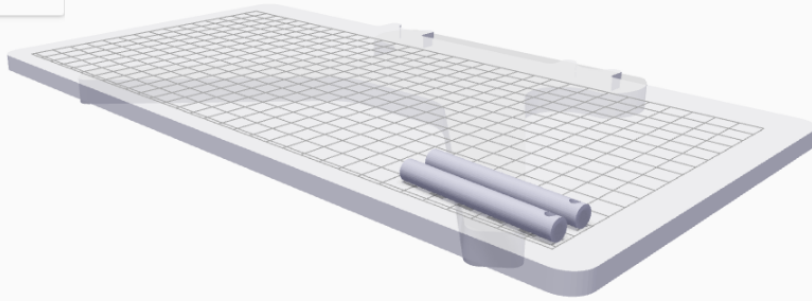
Build Details ▾

Estimated Print Time
1h 31m

Onyx Volume
5.74 cm³

Fiberglass Volume
0.22 cm³

Material Cost
1.72 USD



BUILD SETTINGS
Review and modify your build settings.

Printer Type
Desktop Series (Onyx, Mark Two) ▾

Select Printer
Steelix ▾

Parts In Build
Select...

axle
- 2 +

Cloud Print Generation Yes

Part View

Save Build

Print