

LexaPics Instructions

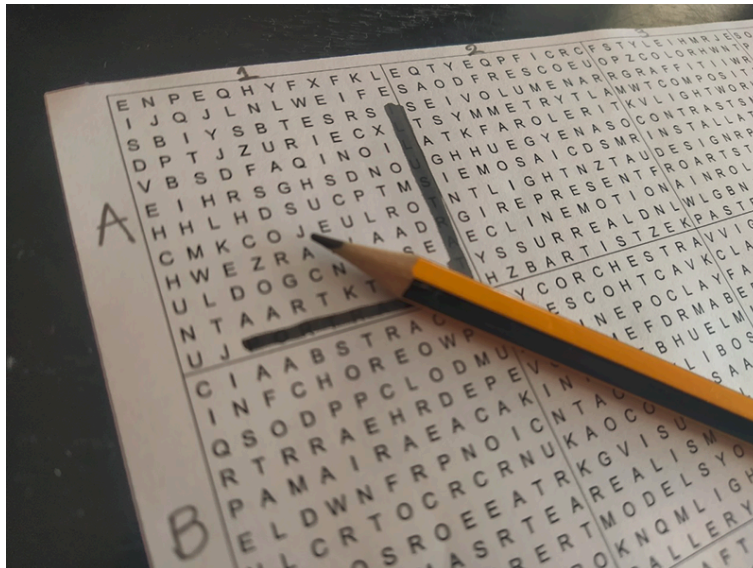
Welcome to LexaPics — a creative puzzle experience where hidden words form beautiful pixel-style images. This illustrated guide walks you through every step: printing, solving, and customizing your own artwork, some tips, plus a Bonus: Fast Track or 'Creative Cheating', If you're short on time, or just want to see the result quickly.

1. Print Your Puzzle Grid

Each puzzle comes as a high-resolution PDF. You can print it at home in A4, A3, or even create large-format posters.

identify grids

We intentionally did not include grid labels in the file, as the design is meant to be framed and displayed, since this is our canvas, we wanted to keep the layout as clean possible. The grid labeling follows a simple format: each row is assigned a letter (a, b, c, ...) and each column a number (1, 2, 3, ...) So first row's left cell is A1, second A2. To label the grid for reference, you can lightly write the row letters and column numbers with a pencil in the blank margins on the left and top, or mark them subtly next to each cell—preferably in a way that can be easily erased later.



No A3 printer? No problem.

If you want to home print it in A3 or bigger but **don't have an A3 printer**, you can use **Adobe Acrobat Reader's "Poster" print option** to tile across A4/letter pages.

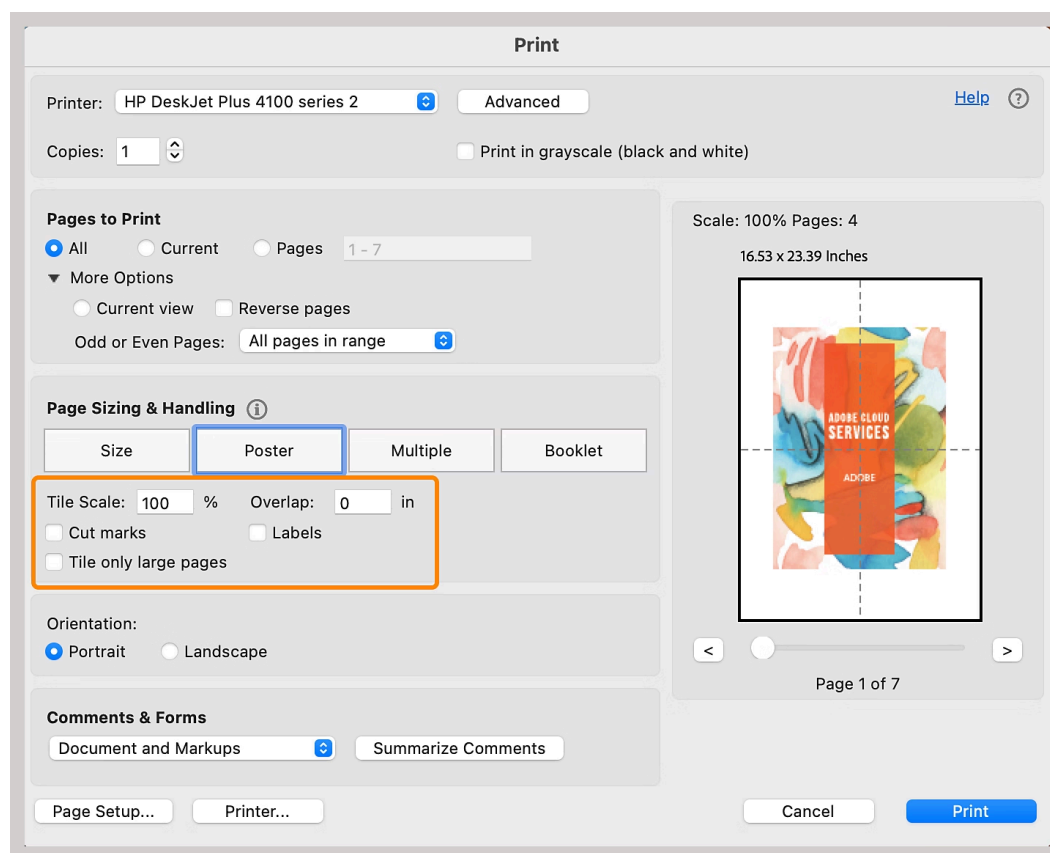
Alternatively, you can take the file to a **local print shop** and choose any paper type or quality — especially useful if you plan to frame your work. The file you own is made out of vector graphics and lettering so you can go as big as you want without losing print quality.

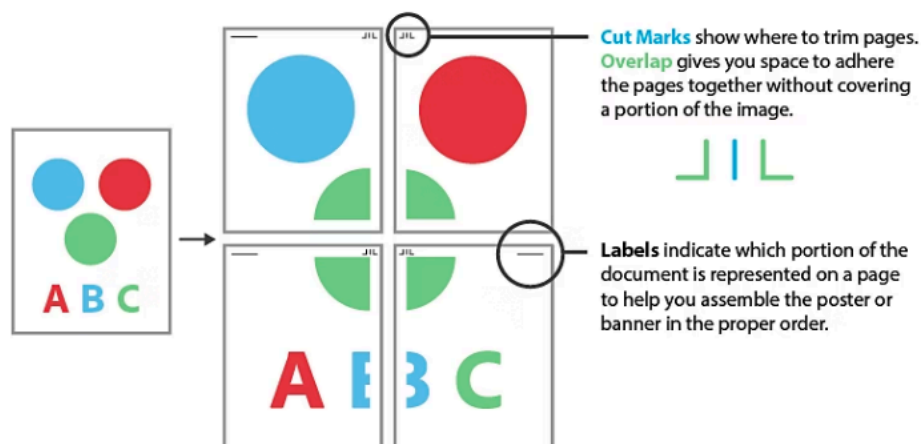
Here's how:

Full guide from Adobe:

<https://helpx.adobe.com/acrobat/kb/print-posters-banners-acrobat-reader.html>

1. Open a file in Acrobat or Acrobat Reader. Select **Print** this file from the upper right.
2. Select **Poster** in the Page Sizing & Handling section of the Print dialog box.
3. Set the following **options** as needed:
 - **Tile Scale**- Scales the pages by the amount you specify.
 - **Overlap**- Determines the amount each tile overlaps adjacent tiles.
 - **Cut marks**- Add guide marks to each page to help you trim the overlap.
 - **Labels**- Adds the filename and page number on each "tile".
 - **Tile only large pages**- Tiles only the pages that are larger than the paper.
4. **Print**





2. Print the Wordlist

Print the wordlist file on A4/letter paper (landscape mode). Each wordlist page matches two rows of your puzzle grid.

In multi-color puzzles, the wordlist is split into color groups:

- First: lighter-color words (e.g. blue, red)
- Then: a section marked ' - black - ' for the final shading layer

3. Search and Shade

Find the words and shade them directly on the puzzle grid. As you go, a pixel-style image gradually appears. You can use **markers**, or **paint & brush**, or **watercolor markers**. The key is using transparent coloring so the underlying letters remain visible to be able to find the remaining grid's words.

♦ Recommended tools:

- WaterColor markers (they leave visible ink but allow the grid to show through)
- Dry-erase markers (they leave visible ink but allow the grid to show through)
- Brushes with watercolor or diluted acrylic paint for a more artistic finish

💡 **Pro tip:** Use a pencil to lightly outline the words before shading. This helps if you're using ink or paint and want to plan ahead.

🎨 **Don't aim for perfection — aim for expression!**

The beauty of LexaPics lies in its imperfection.

Your lines don't have to be perfect. Your brush strokes can wander.

This is art — not a test.

As you shade and uncover, you're not just solving a puzzle.

You're creating a piece that's entirely yours.

No two finished LexaPics look the same — and that's the magic.

Embrace every unique mark. Frame your version.
Let your creativity lead the way.

🎨 check the shading examples section for photos OR apply your own technique!

4. Color Variations

If your puzzle includes multiple colors:

- Start with the first color section of the wordlist (e.g. red or blue).
- After completing that layer, continue with the second section (usually black).

This layered approach reveals the final image gradually and accurately.

💡 Pro tip: **Make your LexaPics puzzle truly your own!**

- Choose any color palette that matches your decor or mood.
- Frame your final piece as original wall art — handmade by you.

💡 Bonus: Fast Track or 'Creative Cheating'

If you're short on time, or just want to see the result quickly — we've got you covered.

Every LexaPics theme includes a high-resolution preview image, showing all shaded words by color.

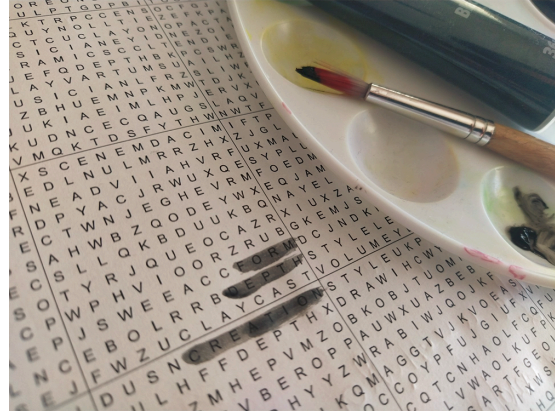
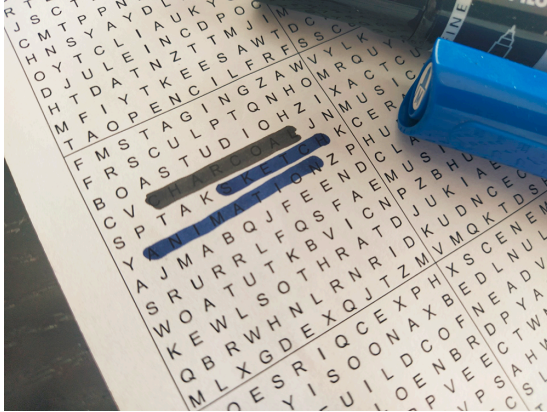
You can:

- Use it as a reference to copy word placements onto your printed grid.
- Or, print the preview directly and display it as-is!

Even when using the preview, the grid remains visible underneath — so it still feels like your creation.

💡 Shading Examples

(a) straight to paper shading with marker or brush and paint



(b) Using a pencil to lightly outline the words before shading, and shade with required medium marker or brush

