

UNC BeAM
Hanes Art Center or Murray Hall
ULS UCP (Laser Cutter Control Software)
Standard Operating Procedures (SOP):

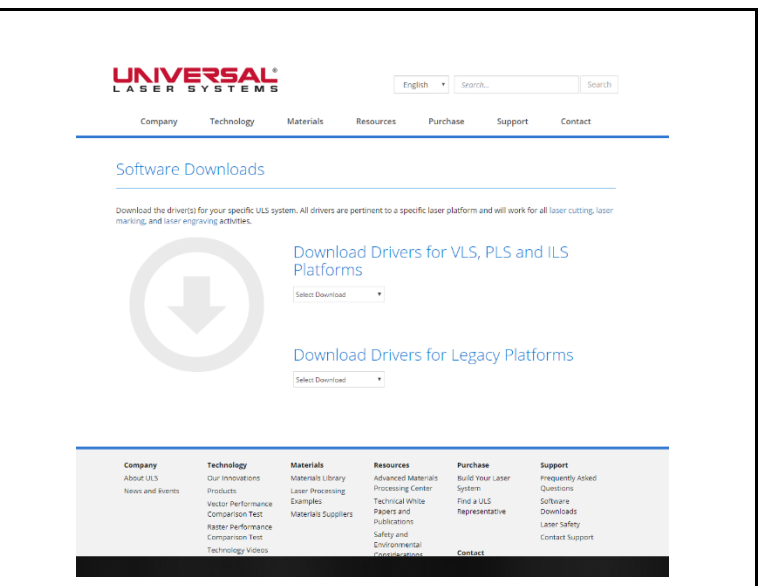
Introduction

Universal Laser Systems offers its Universal Control Panel software as a free download on its website. This software is used to position and duplicate your design, as well as determine power, speed and PPI settings in preparation for cutting. Downloading and using this software will allow one to determine the required settings and estimated time of a cut *before* actually getting on the laser cutter.



Download and Installation

Begin by downloading your software. Navigate to ULS's downloads page at <https://www.ulsinc.com/support/software-downloads>.



Under “Download Drivers for VLS, PLS, and ILS Platforms”, select “UCP Installer” from the drop-down menu. Then click “Download UCP Installer”

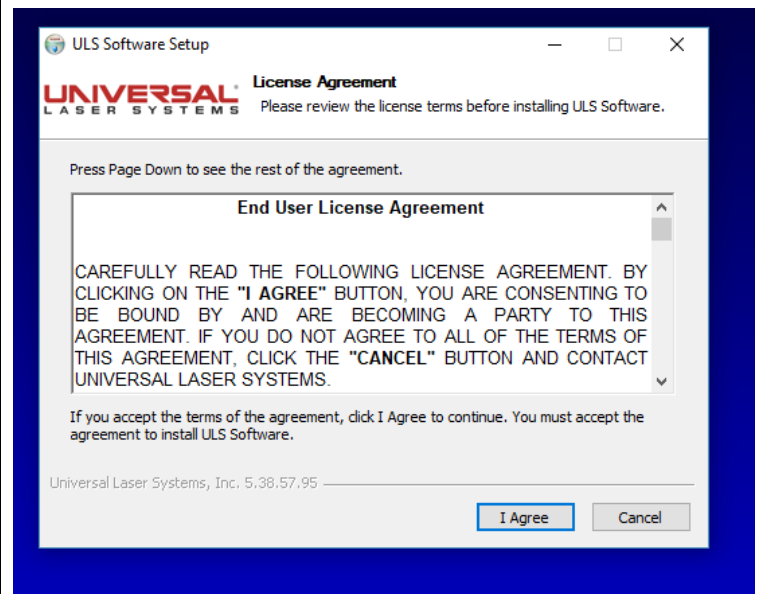
Download Drivers for VLS, PLS and ILS Platforms

UCP Installer

Items to Download

Download UCP Installer

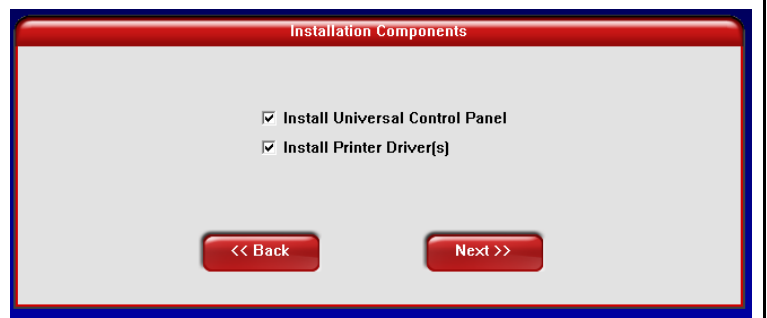
Run the file that you have downloaded. Read and agree to the EULA.



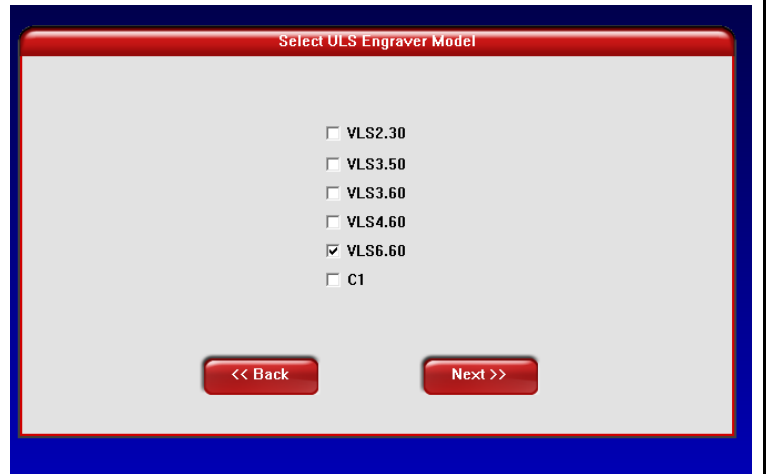
To download the software for the laser cutters in Murray, select “VLS DESKTOP | VLS PLATFORM” (highlighted in red). To download the software for the laser cutter in Hanes, select “ILS PLATFORM” (highlighted in yellow).



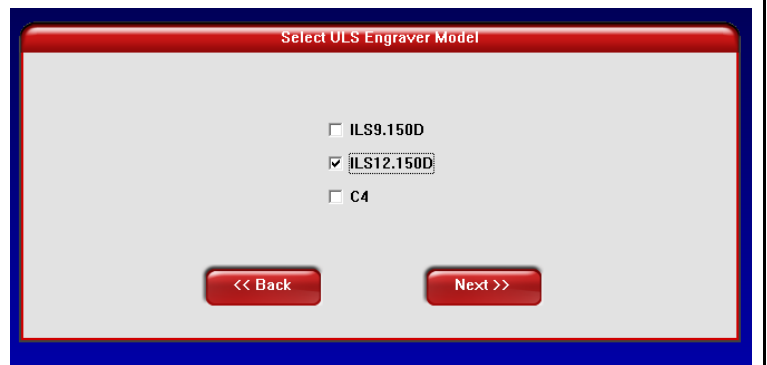
Check both boxes to install both the UCP software and the required drivers. Then click "Next."



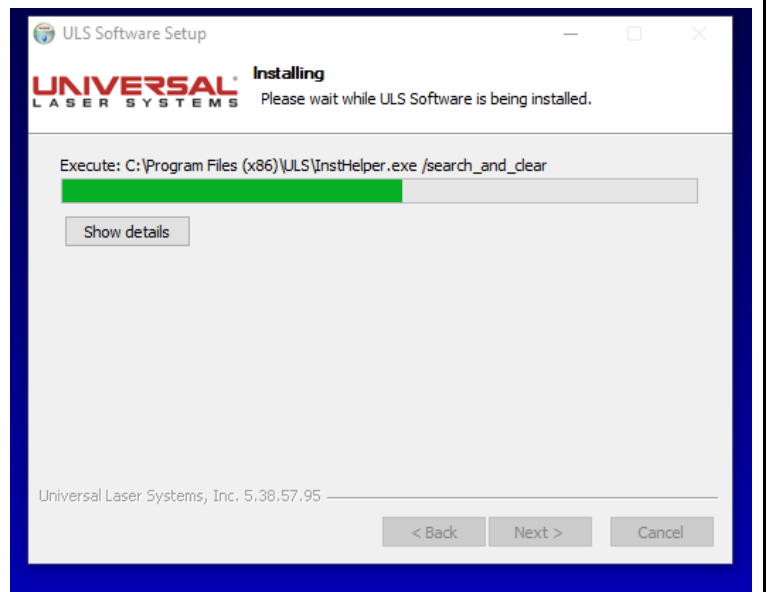
To install the drivers for the Murray cutters, select the box for "VLS6.60"



For the Hanes laser, select "ILS12.150D." Then click next

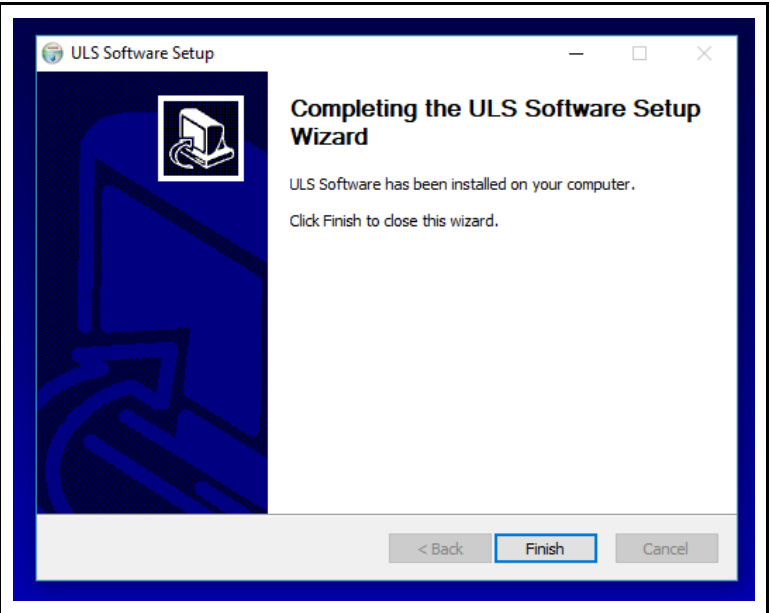


The installer will now install your software.



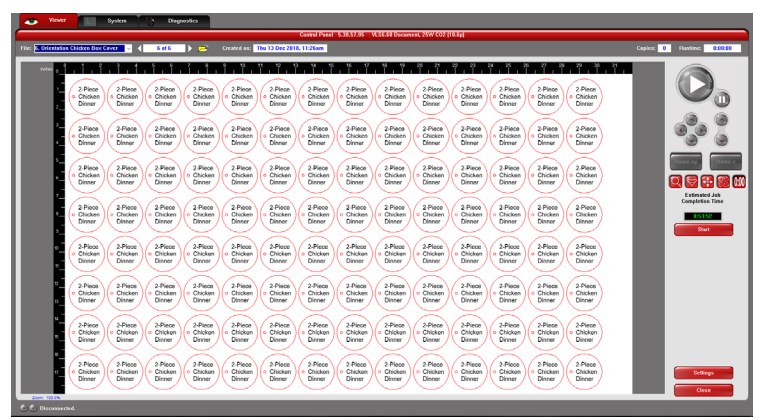
Click "Finish" to close the wizard.

Your software is now successfully installed.



Export/Import Your Cutfile from UCP

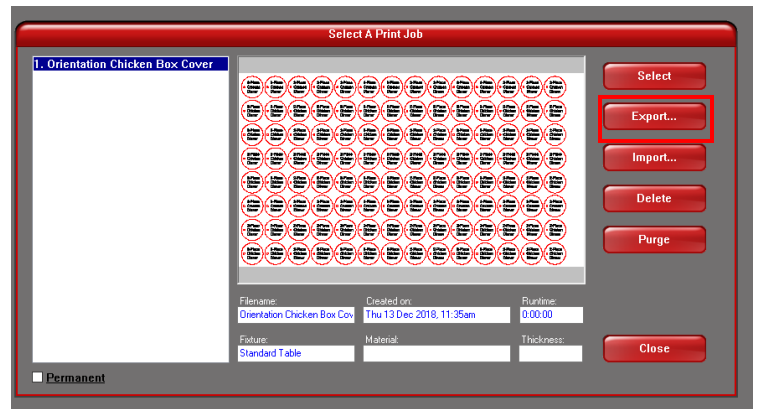
Once you have downloaded UCP, you can set up your cuts for the laser cutter from the comfort of your own computer. Then, it is easy to export your cutfile to a flash drive, then import it to the computer connected to BeAM's laser cutters.



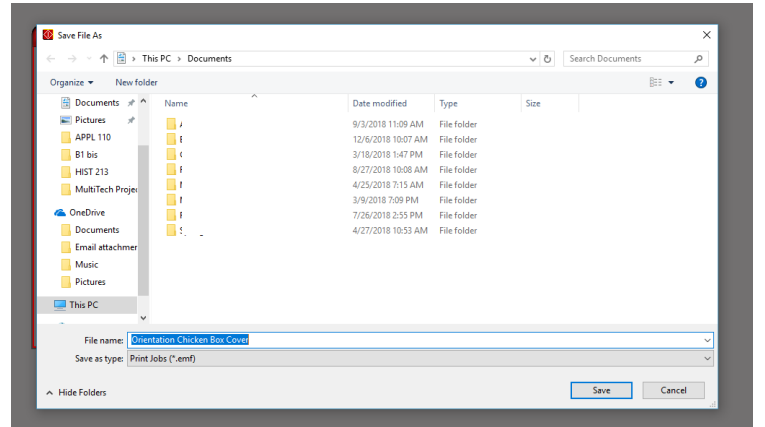
After setting up your print in UCP and determining how long it will take using the timer tool, select the folder icon near the top left of the window.



Select your print job in the left-hand menu. Then, select the button in the right marked "Export."



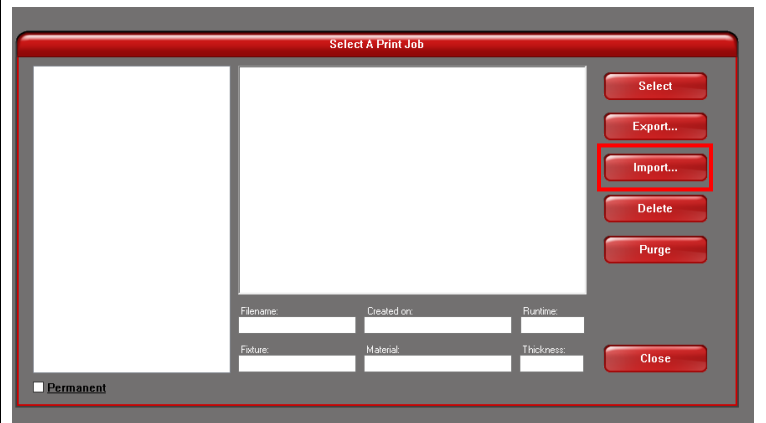
Save the file to a flash drive.



To import a file, select the folder near the top of the screen.

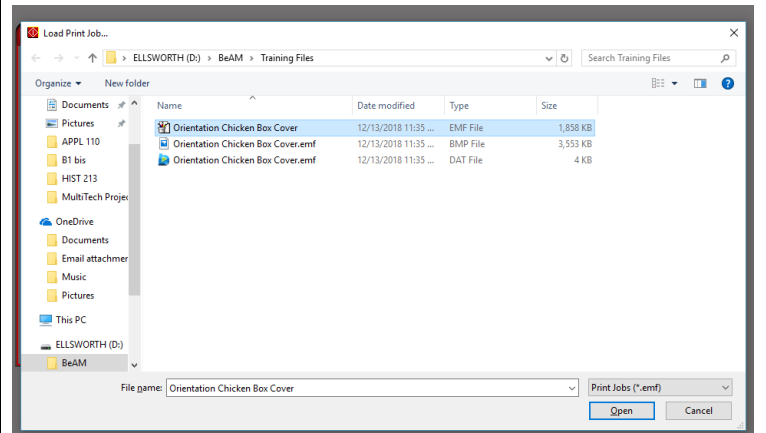


Select the box marked "Import."

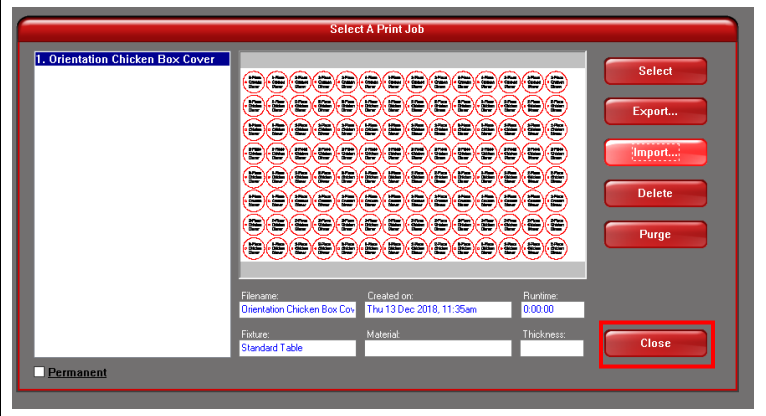


Select the EMF file from of your design from your flash drive.

The program creates three different types of your cut file when exporting—The .EMF is the one you want to use when importing.



Select "Close" on the window.



Your file has now been successfully imported into the UCP software on the computer attached to the laser cutter. You are now ready to cut. Proceed as normal.

