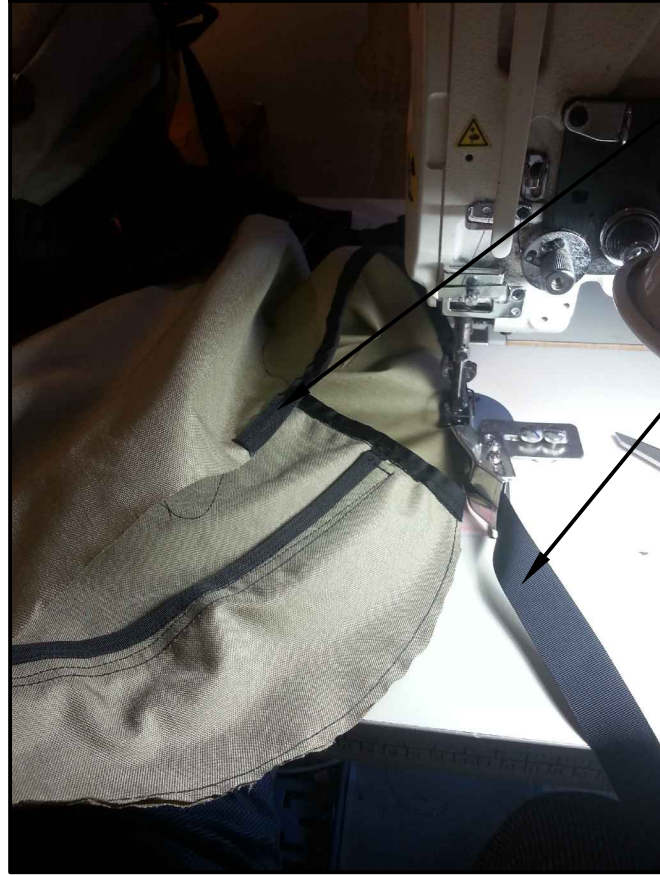


OUTSIDE BACK STEP 3 CTD: RIBBON BIND LID/OPENING

PRODUCED BY AN AUTODESK EDUCATIONAL PRODUCT



overlap ribbon for clean look

when you overlap, cut ribbon and fold it into the ribbon binding attachment



overlapped and done!

PRODUCED BY AN AUTODESK EDUCATIONAL PRODUCT