

Instruction Manual

Mark 1

Weight Limit 100 lbs (39.4 kg)



Objective:

The objective is to build the Mark 1 which is a snow sled for children under a 100 pounds. Once the customer follows the six steps listed below they will have a functional sled.

General:

Read all instructions before using the Mark 1. The sled should be built with adult supervision. To ensure proper performance follow the instructions. The Mark 1 is to be used by people weighing less than 100 pounds.

Sledding Safety:

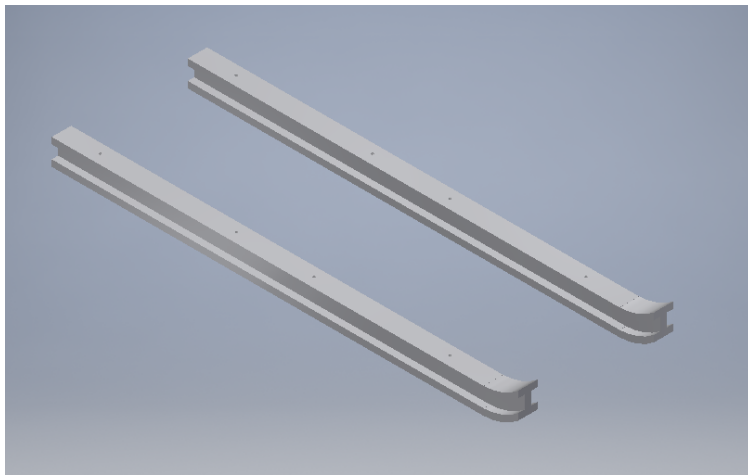
Like any sport, sledding can be dangerous and caution must be taken. The sled is to be used on a snow covered slope free of trees or an other dangerous objects that may cause harm to a sledder. Make sure the sledder does not have any loose clothing that could get caught in the sled and cause harm. Wearing a helmet is recommended when sledding.

It would be impossible for our company to anticipate every situation that may occur when sledding. Therefore, this manual makes no representation about the safety of the sledding. Please use caution when sledding.

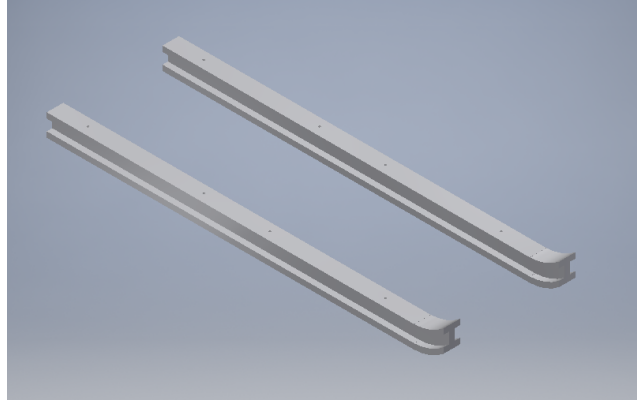
Troubleshooting/Service:

If you have any questions on building or about riding the sled please contact us by email (sledrus@gmail.com) or by phone (1-800-sle-drus). If you have any questions about building Mark 1 or need additional parts, please visit our website at www.sledrus.com or by phone (1-800-sle-drus).

Step 1: Open the box and make sure the following parts are all in the package: 8 bolts, 2 runners, an allen wrench, 2 top plates, and a four foot rope



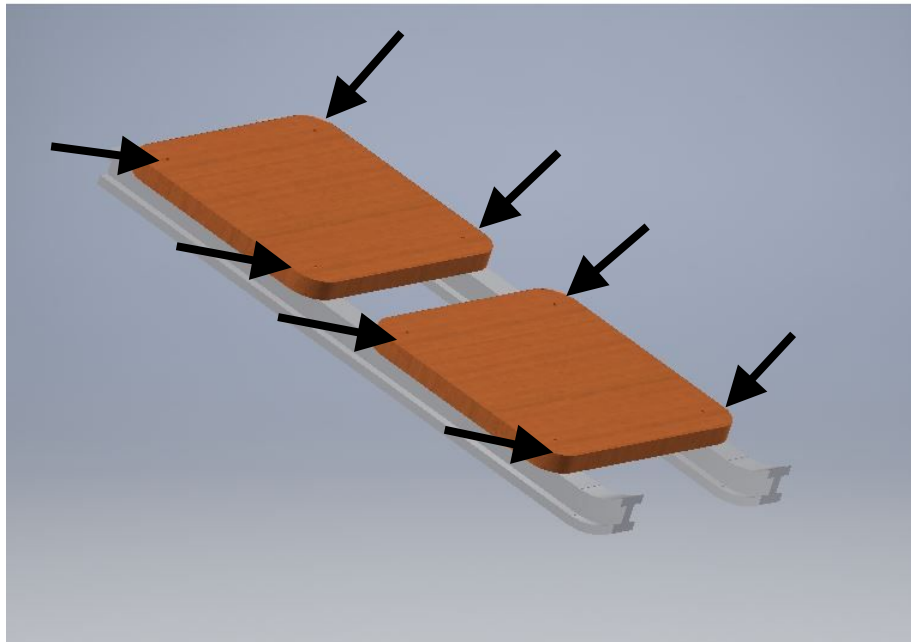
Step 2: Line the two Runners parallel to each other with the curved end facing up and on the same side.



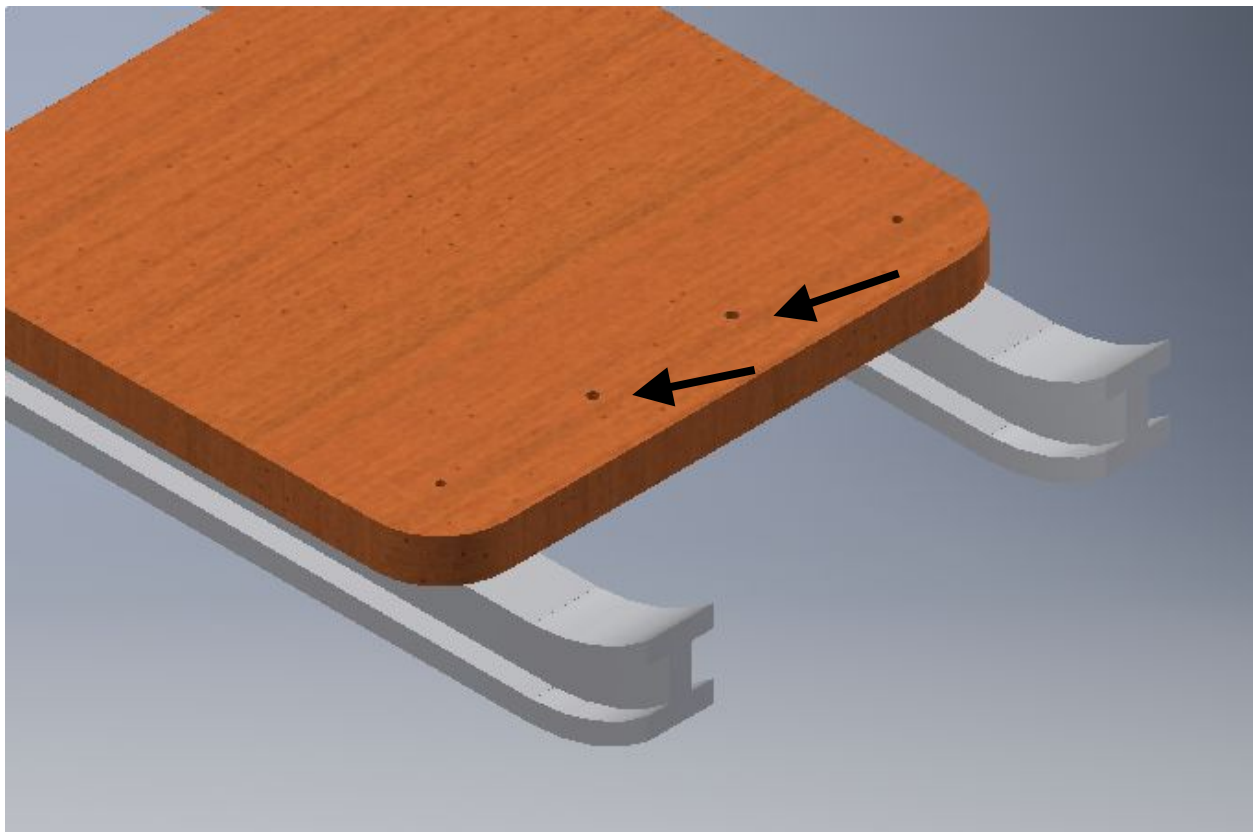
Step 3: Place the two top plates on the runners so the holes line up with those on the runners and put the one with two hole on the front near the curved ends of the runners.



Step 4: Thread the bolts through the wood plates and into the threaded holes in the metal runners.



Step 5: Take the rope and thread both ends through the holes in the front and make a knot on the underside of the plate therefore not allowing it to move and forming the rains of the sled.



Step 6: Take your Mark 1 sled to the top of a hill on a snowy day and ride it down to the bottom.

Warranty:

Sledrus warrants all parts of the Mark 1 if used properly for one year from date of purchase for the original owner. Improper use of Mark 1 will cancel the warranty.