



1: jigsaw power tool (wipzaag)



2: sanding machine (schuurmachine)



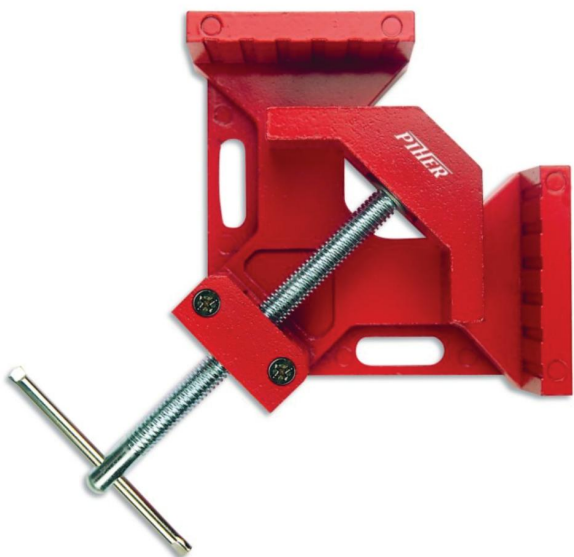
4: panel saw (paneelzaag)



3: cordless drill + drill bits (accuboormachine + boren)



7: soldering iron (soldeerbout)



5: 2 angle clamps (2 hoekklemmen)

6: belt sander (lintzaag)



1: wood glue (houtlijm)



2: all-purpose glue (spray) (universele lijm (spray))



10: mounting wire kit + tin (solder) (kabeleendraad + soldeer-tin)



3: SPAX screws (black) (SPAX schroeven (zwart))



4: 2 L-brackets (2 L-beslag)

5: 4 push buttons (4 drukknoppen)



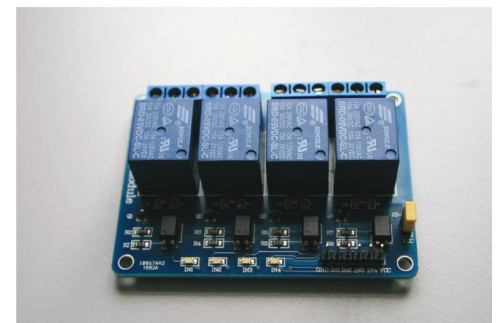
6: water-resistant glued plywood (watervast gelijmde multiplex) 4 m<sup>2</sup> (2 plates of 1220 x 2440 mm) thickness 12 mm



7: 2 sheets of plexi (perspex) (2 plexiplaten (perspex)) thickness 3 mm; dimensions 800 X600 mm



8: 4 water pumps (4 water pompjes)

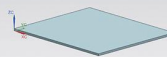


9: relay (relais)

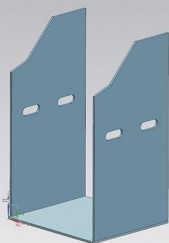
# building JokeBox: wooden housing

1

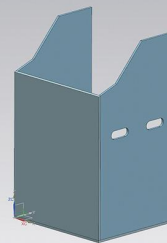
SHEET 1



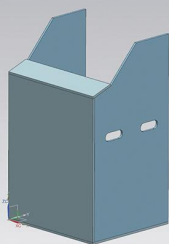
2



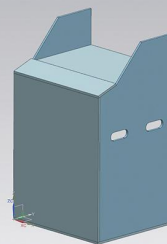
3



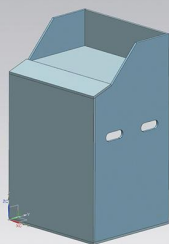
4



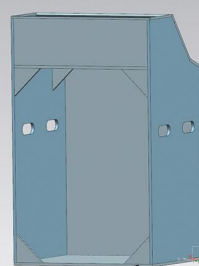
5



6

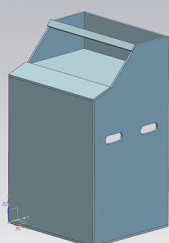


7

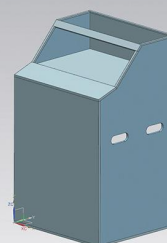


*Between step 7 and 8, the steps in sheet 2 must be performed first*

8



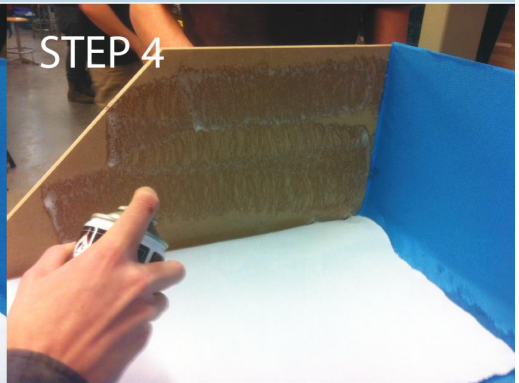
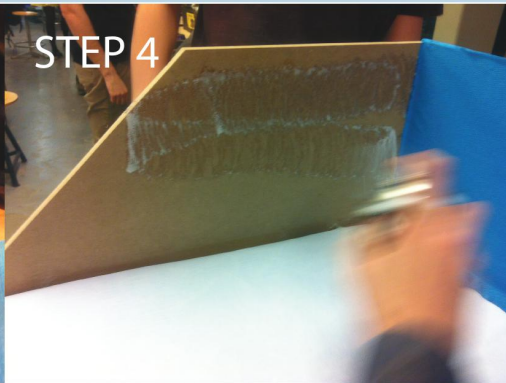
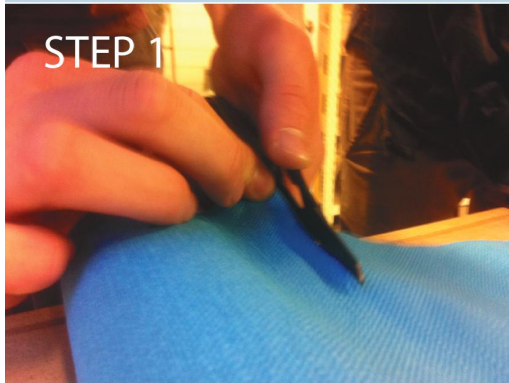
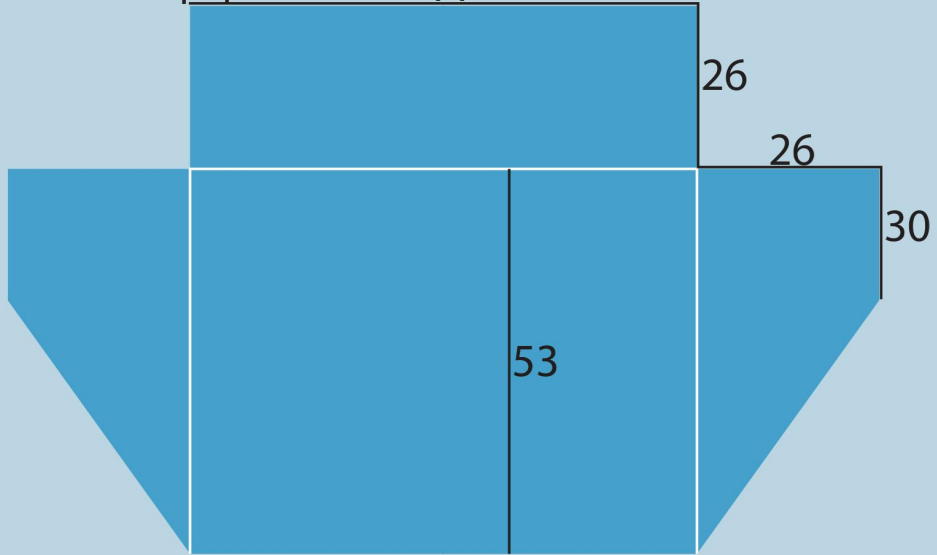
9



1 unfolded tablecloth paper

77

STEP 1

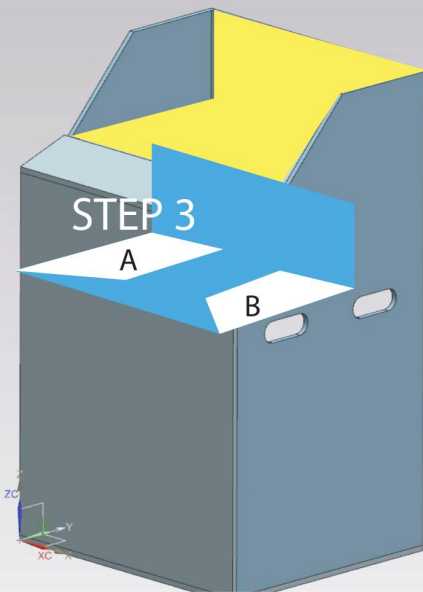


2 put the tablecloth paper in the housing

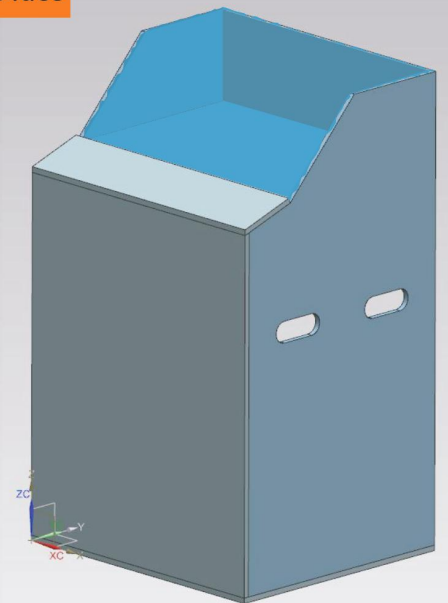
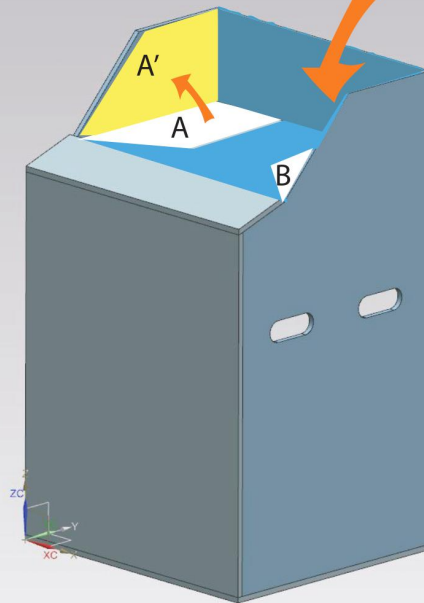
STEP 2

STEP 5




STEP 6



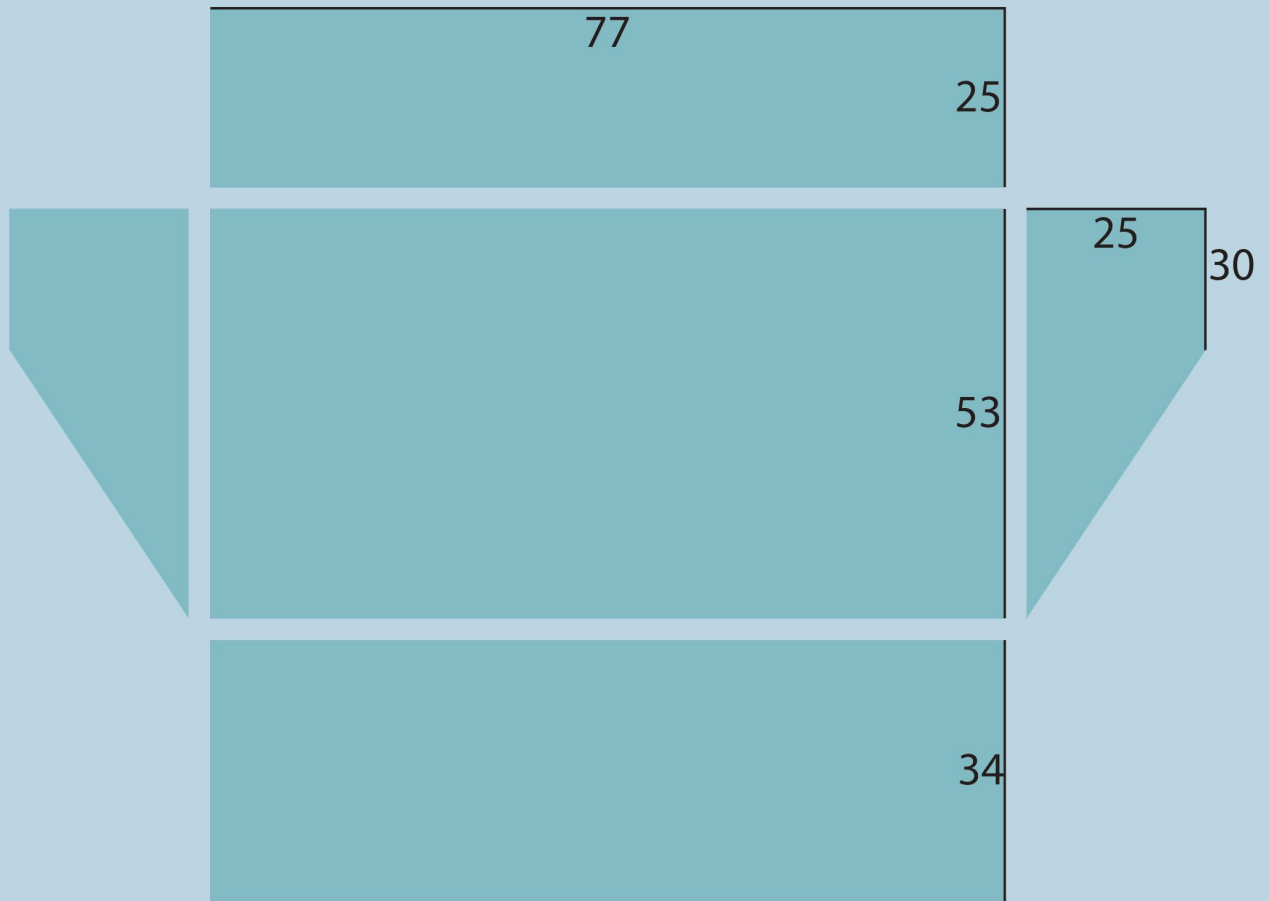
do the same for the opposite face



KEY

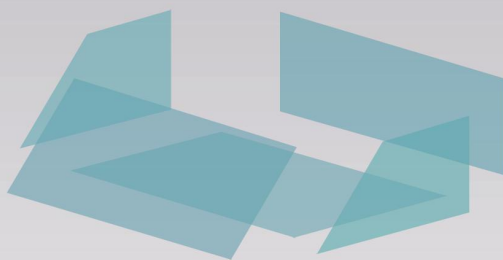
-  reversed side tablecloth paper
-  tablecloth paper
-  glue

## 1 Parts of the aquarium (plexi sheets)



## 2 Assembly of the aquarium (waterproof with silicone)

Exploded view aquarium  
Glue these parts together inside the JokeBox.



— Where to apply silicone (inside aquarium)

