

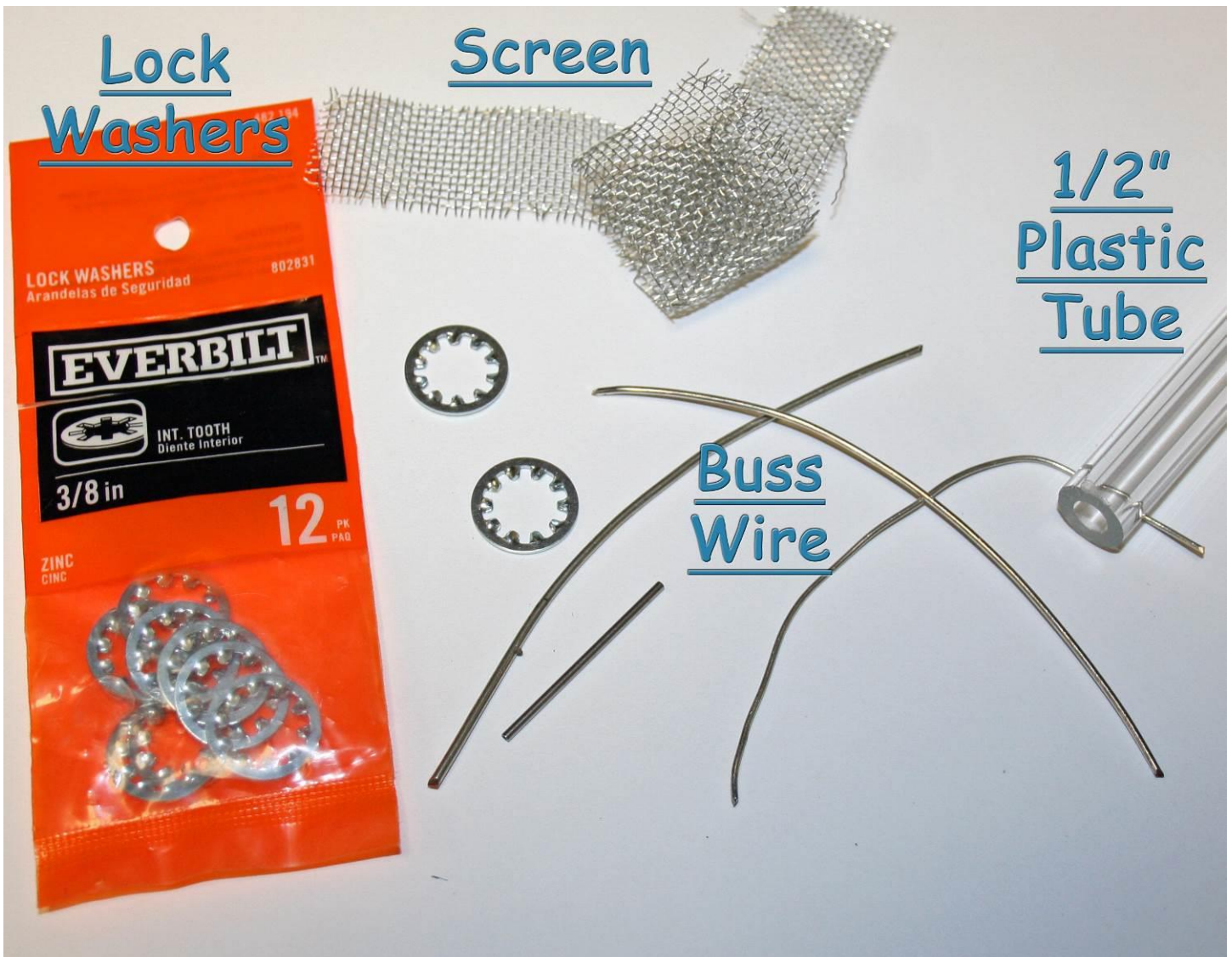
Innards	
Written By: J. E. Graham	
Date: 10/13/2016	Pg. 1 of 5

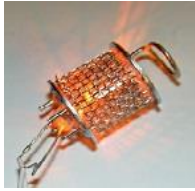
Ok, so I've gotten a couple of comments about destroying old vacuum tubes and that they may not be easily obtainable. When I was a kid you could pick up a whole box full for a couple of bucks, but now I realize that they may be needed for antique radio enthusiasts. So, I came up with a fast and easy way to make some tube innards. I would search the internet for pictures and get creative to add on to my design. This is a fast easy basis to build on.

Let's get started:

### Parts Used:

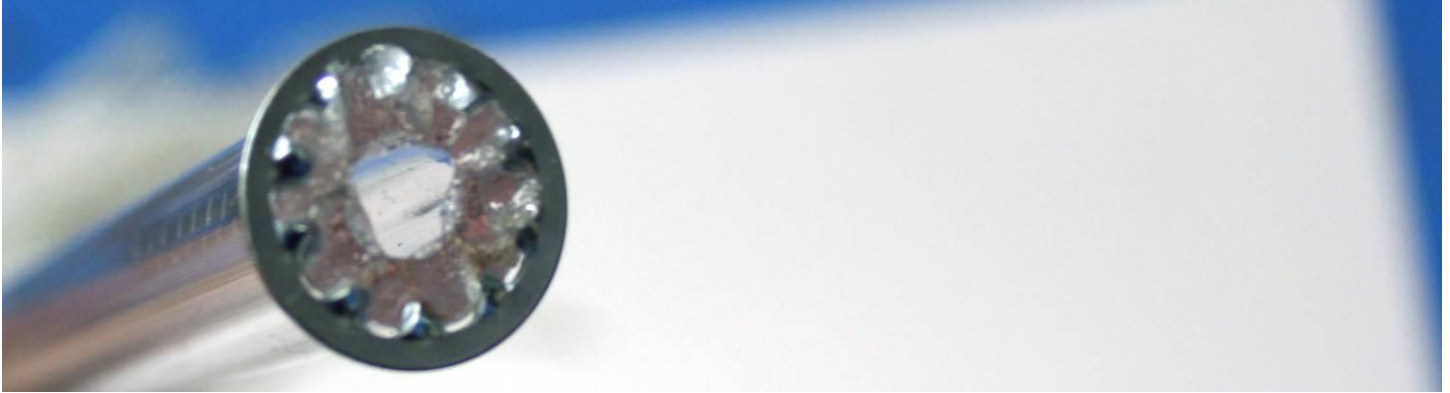
First I looked around for parts that look like what's in a vacuum tube. I came up with some buss wire (a paper clip would work), some window screening (a finer mesh might look better), 3/8" internal lock washers, and some 1/2" plexiglass tubing (eBay).





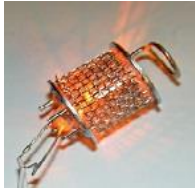
Innards	
Written By: J. E. Graham	
Date: 10/13/2016	Pg. 2 of 5

Center the lock washer on one end of the tubing then, using a soldering iron, melt the washer into the end of the tube.



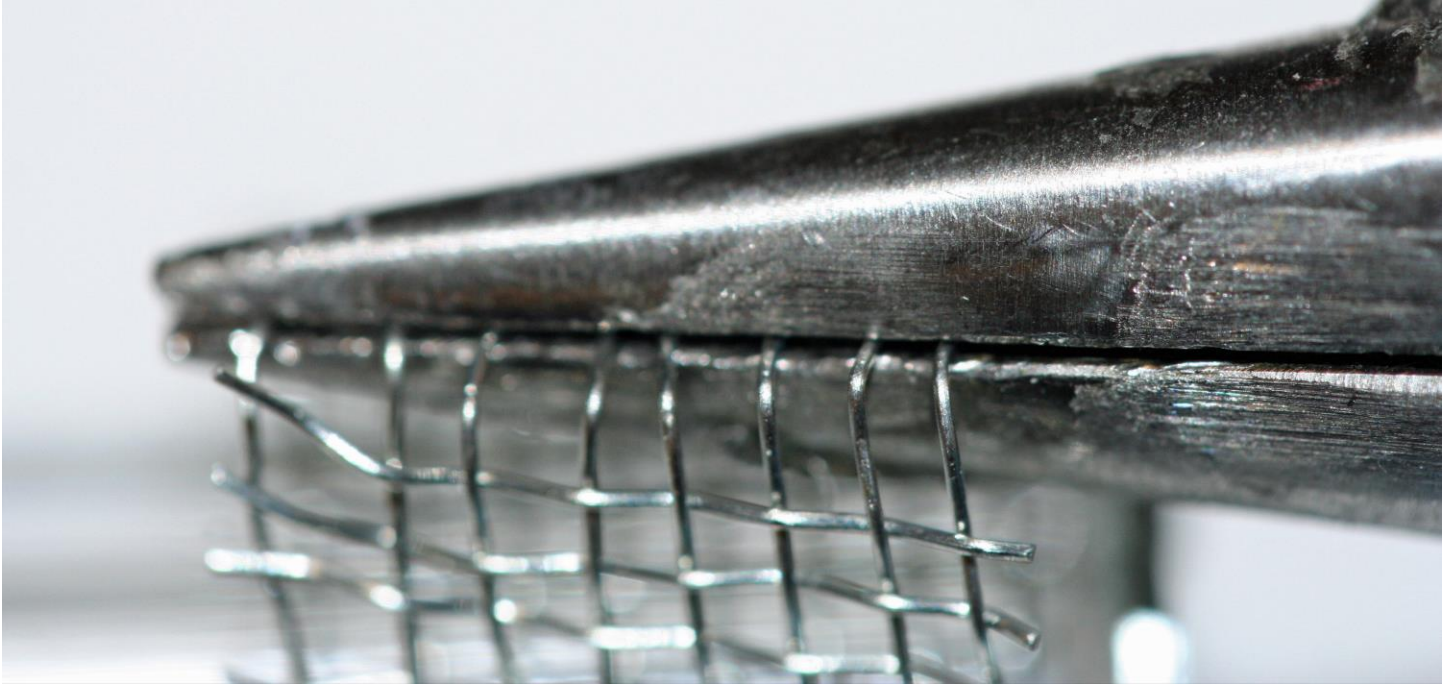
Cut the screen into a 1/2" wide strip and, using a soldering iron, melt one end into the tube.



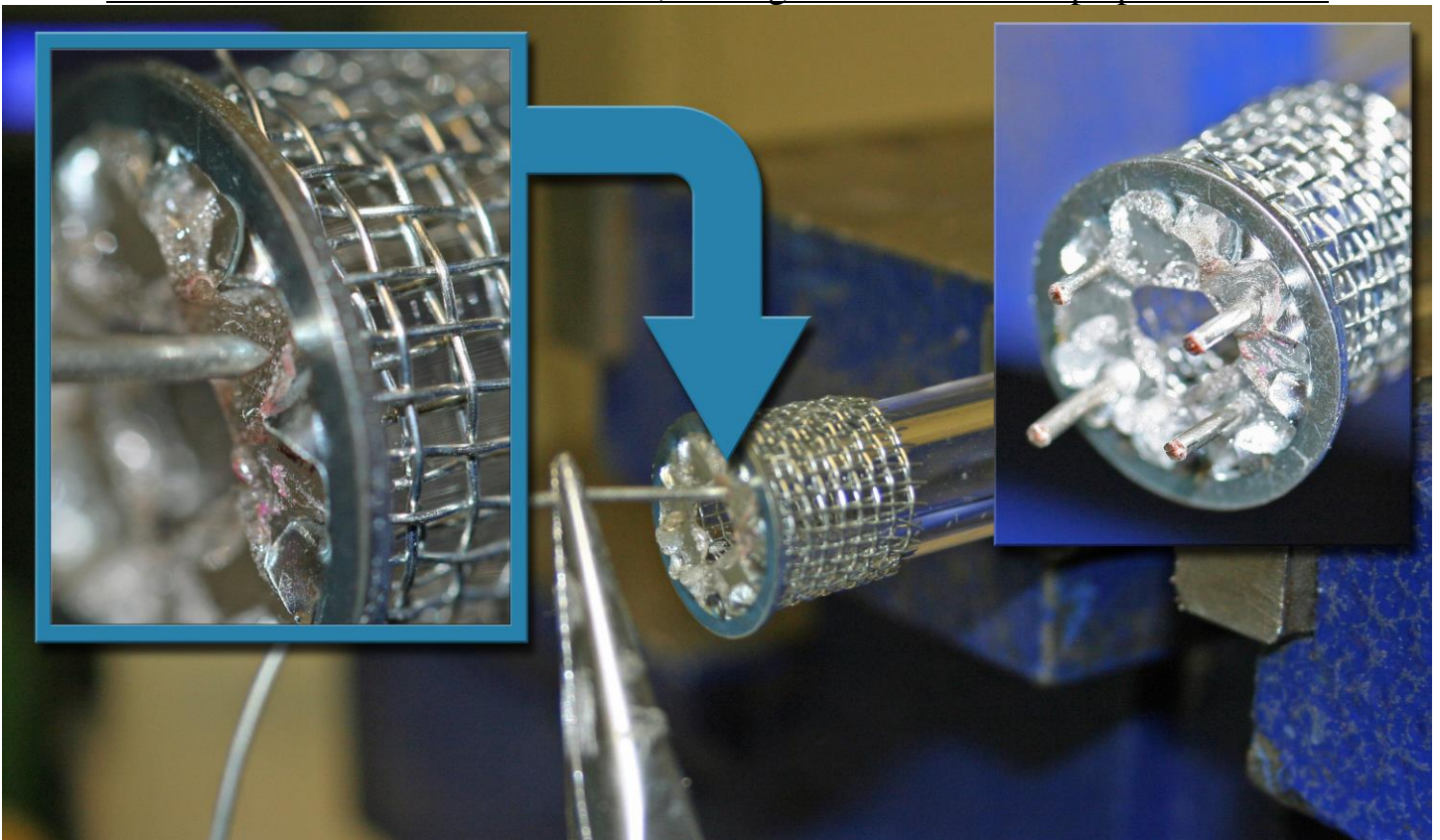


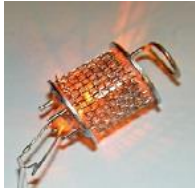
Innards	
Written By: J. E. Graham	
Date: 10/13/2016	Pg. 3 of 5

Pull the screen around the tube twice, bent the wires down and melted that end in, as well.



Melt some wire into the end and trim, making 3 or 4 wires to keep up off the base.





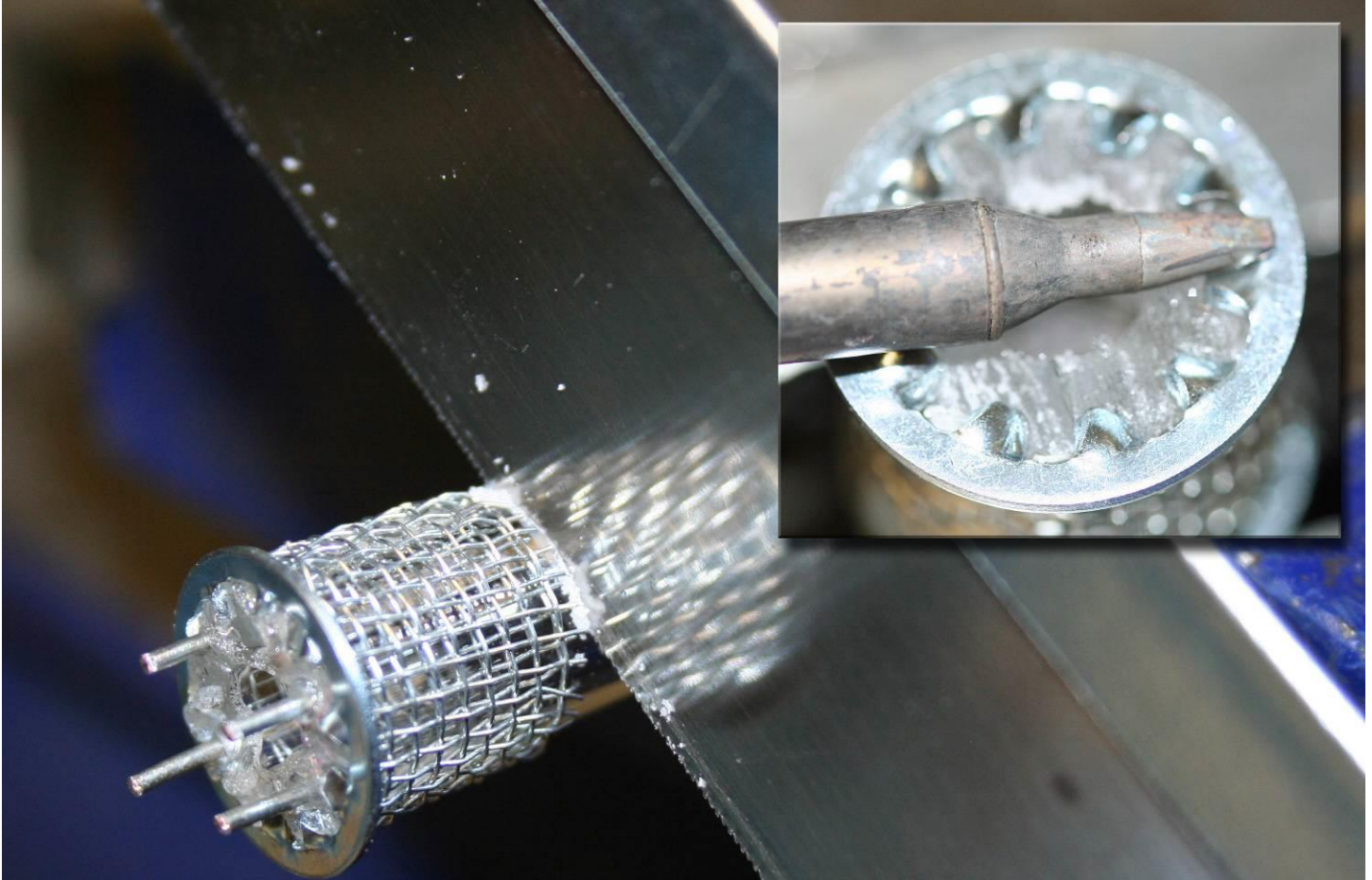
Innards

Written By: J. E. Graham

Date: 10/13/2016

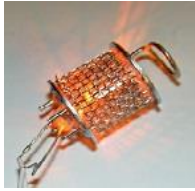
Pg. 4 of 5

Cut the tube at the screen line and melt another washer into the other end.



With pliers, bend a piece of wire, as shown, and melt it into the top.





Innards	
Written By: J. E. Graham	
Date: 10/13/2016	Pg. 5 of 5

BOOM, there you are. Not perfect, but with some pieces of shiny metal or other small parts glued on you can make tis look very real.

