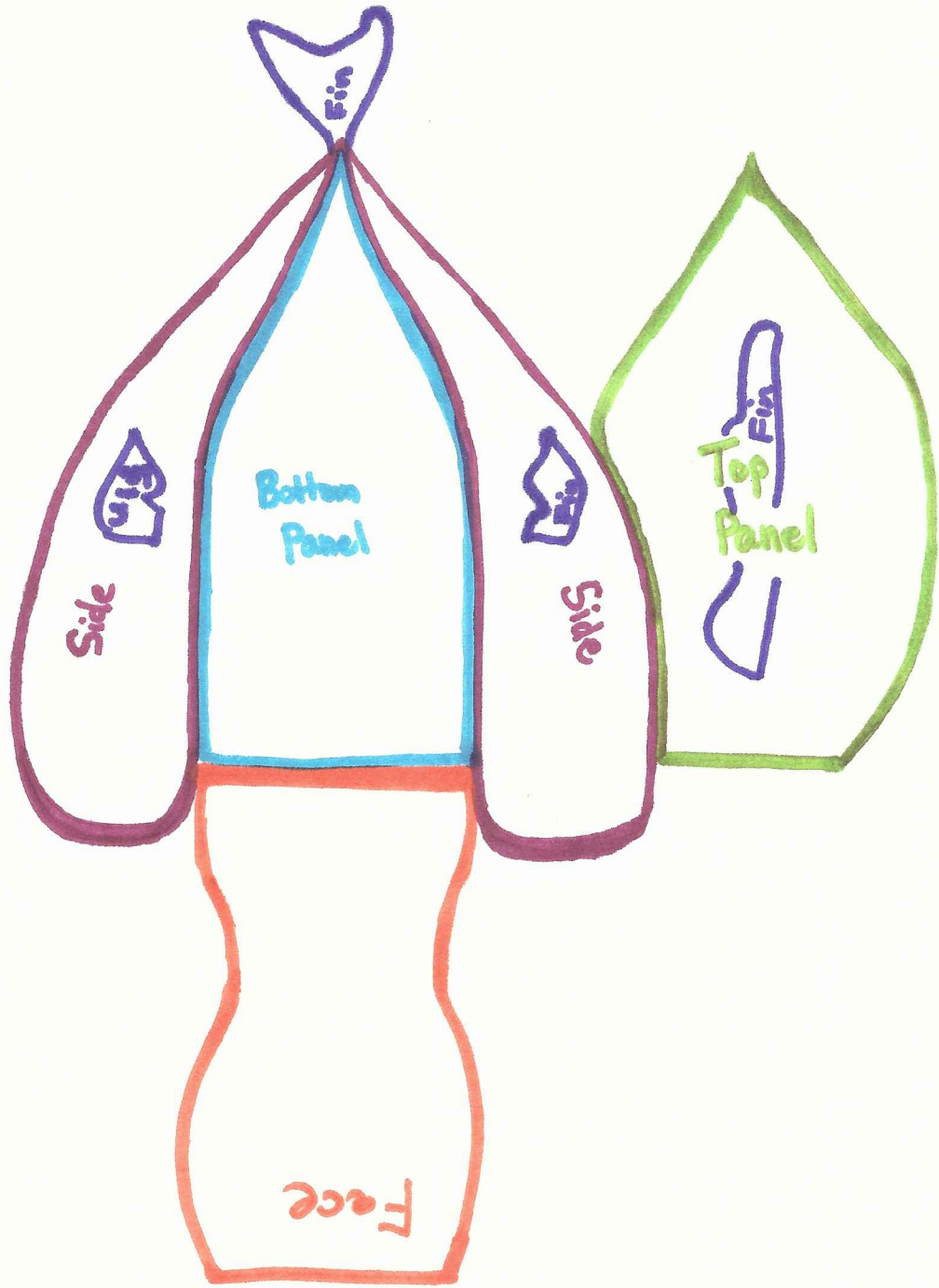


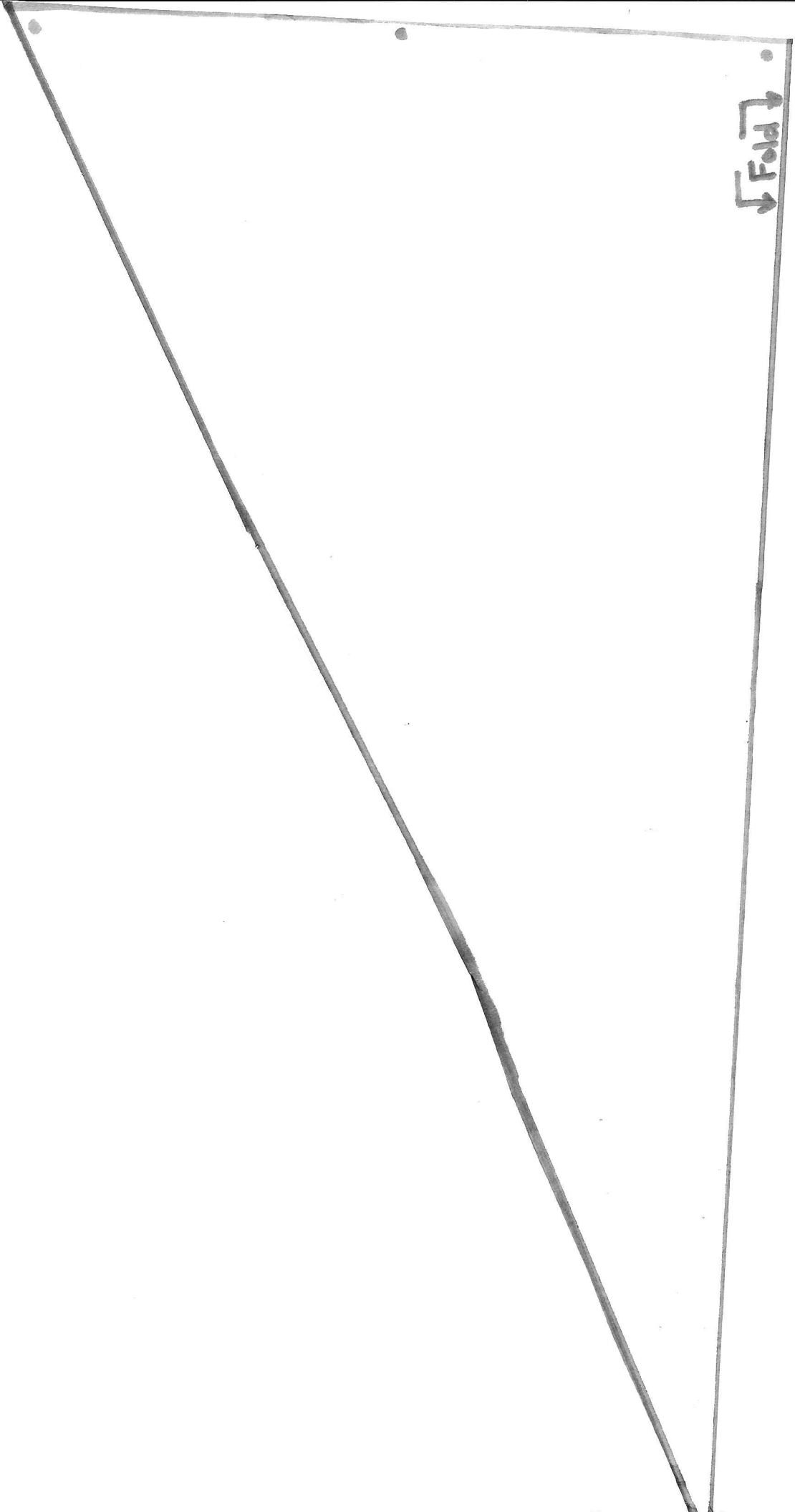
Cat
Fish House Pattern Pieces

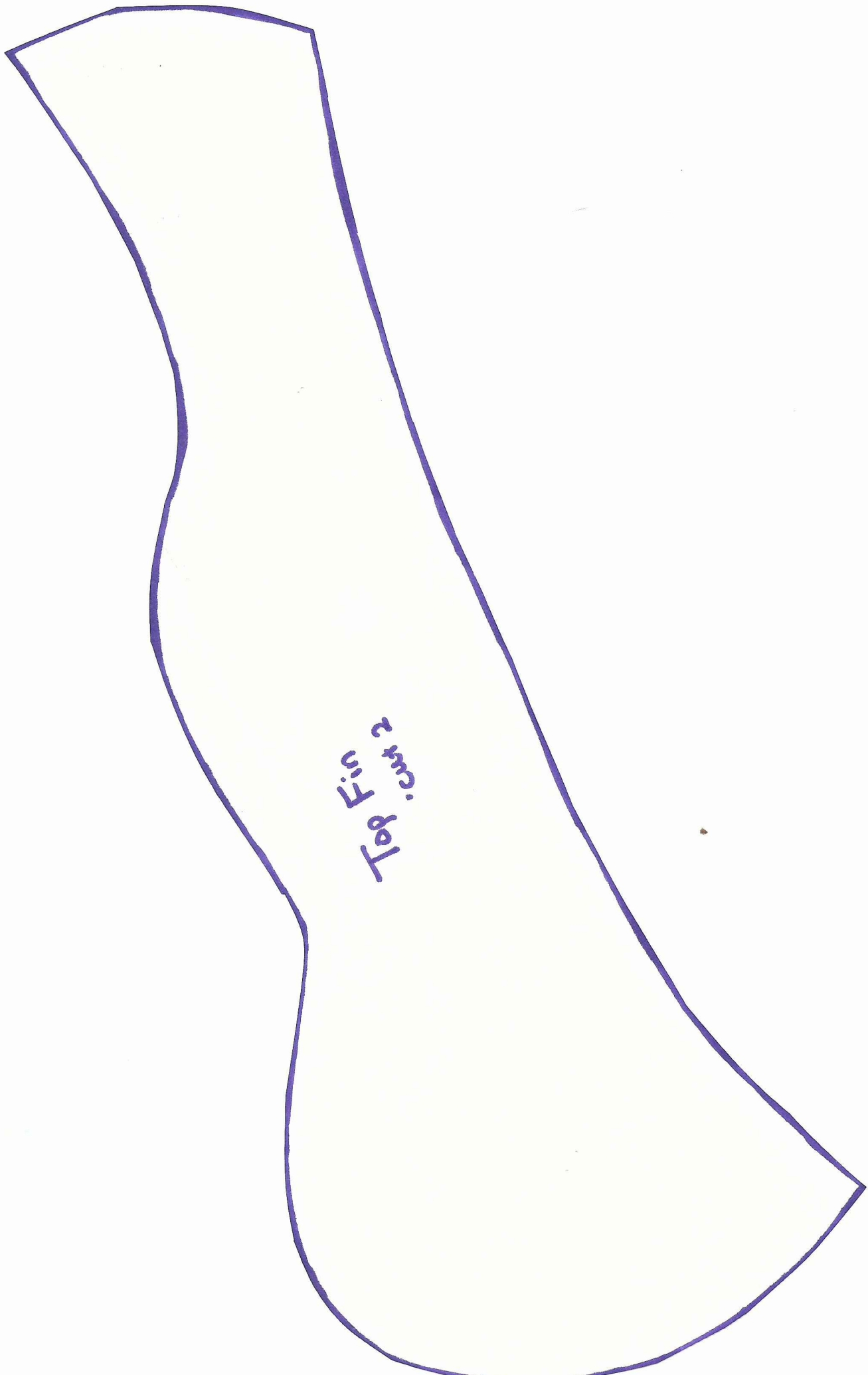




Top Pattern
Piece

- cut one, plus inside
soft lining and
fusible interfacing





Top Fin
2 cm



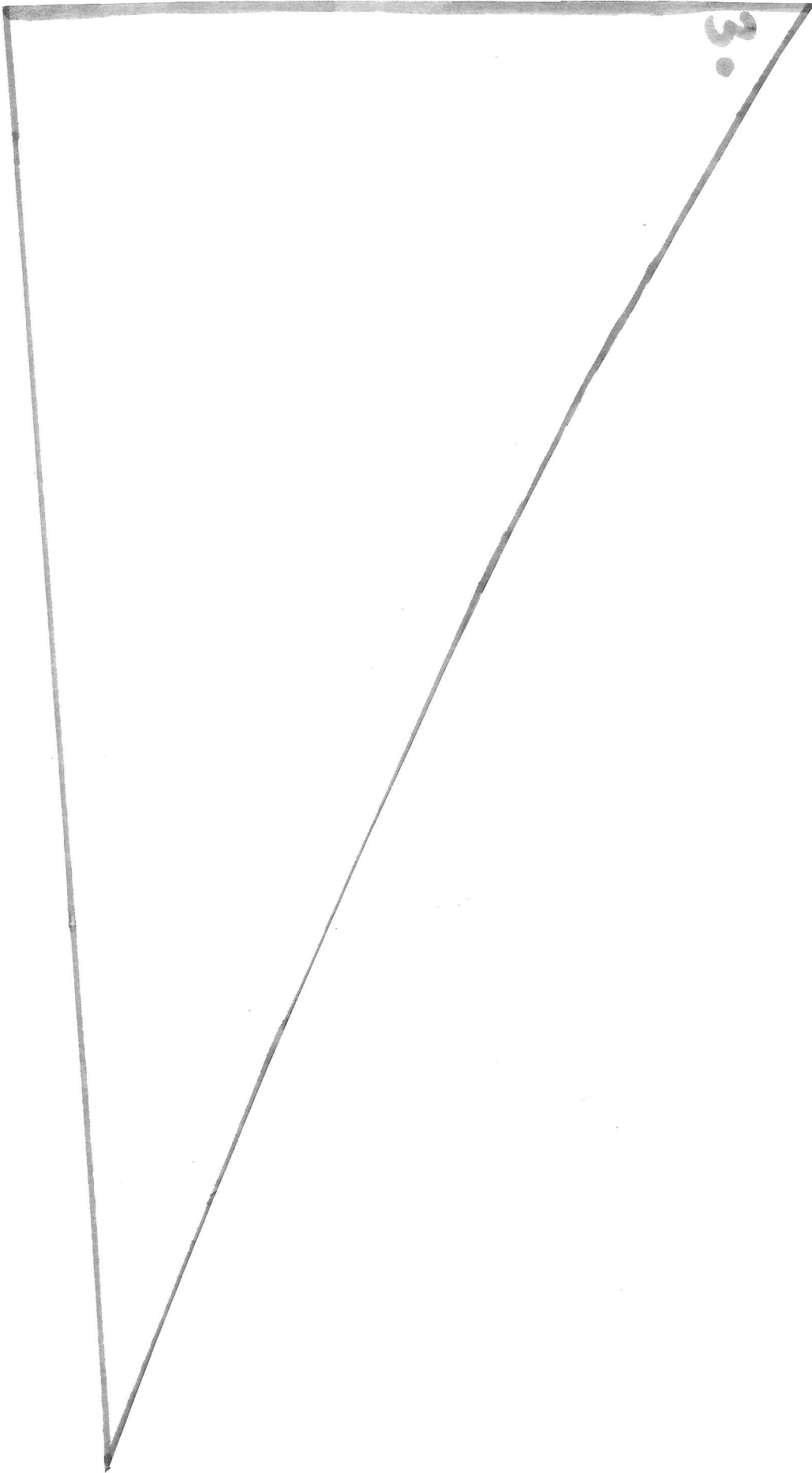
Side Body

- cut one for left side
plus soft inside lining
- also flip and cut
plus soft lining

2

le,
ing and one for fusible interfacing.

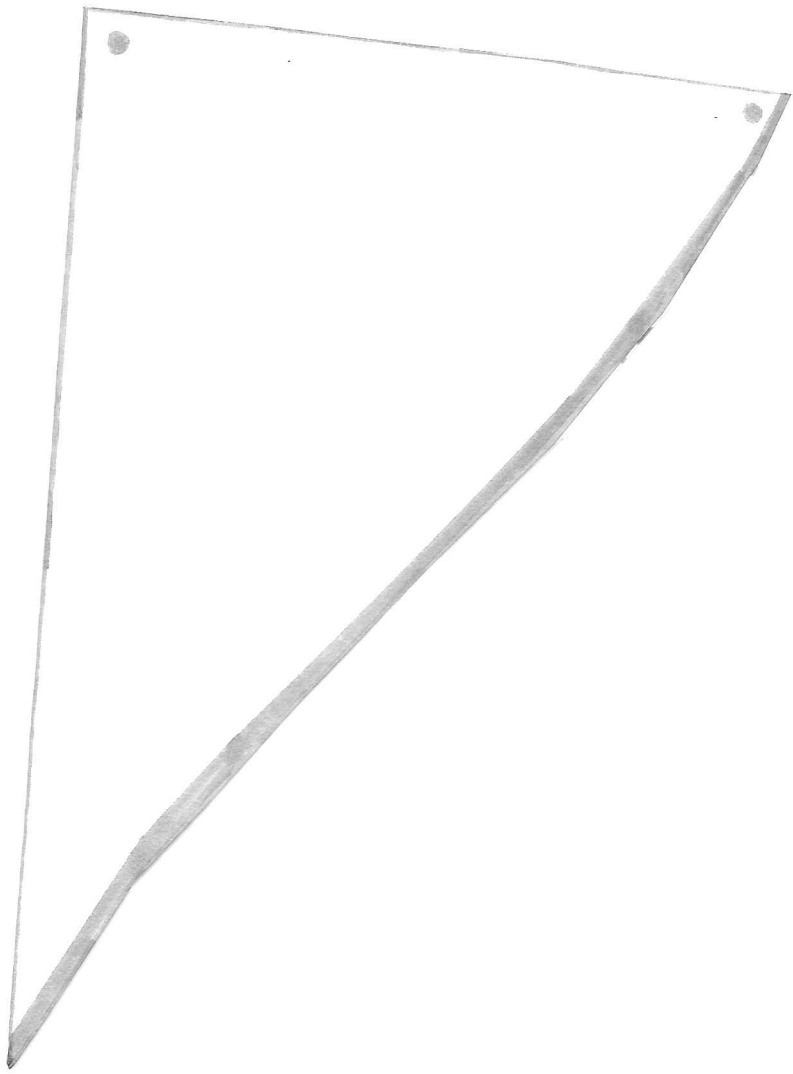
one for right side,
and fusible interfacing

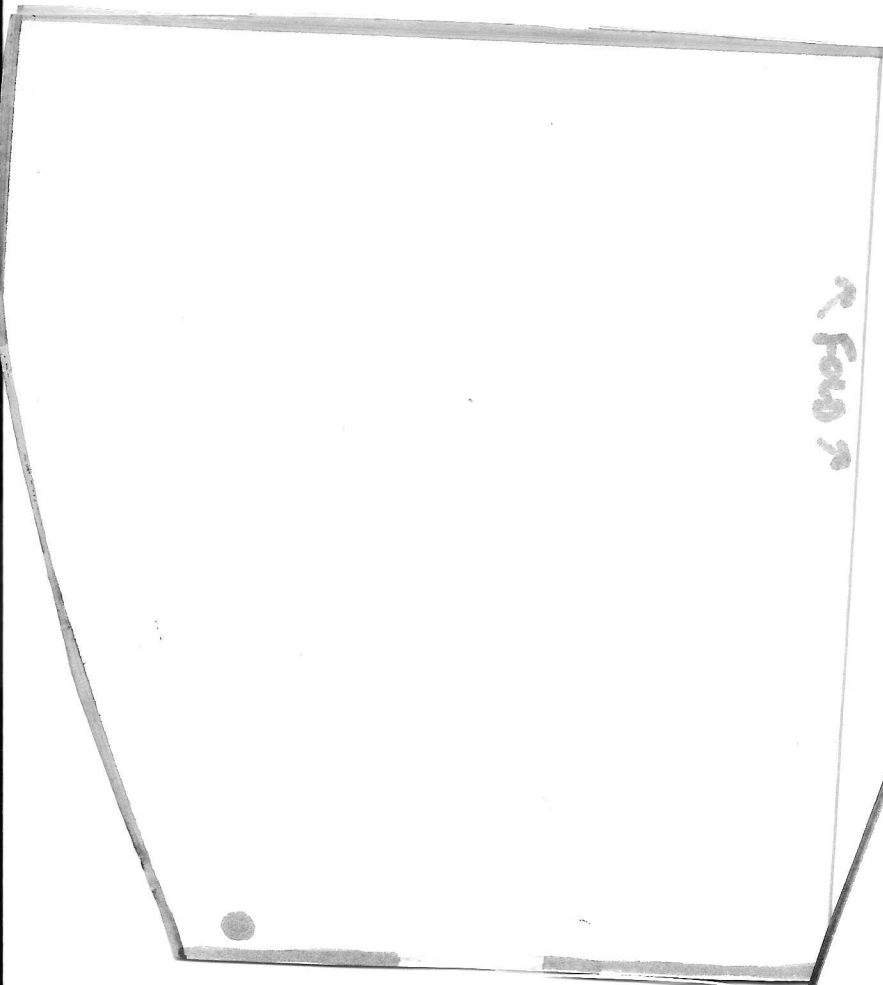


Bottom Panel

- cut one for outside fabric
- cut one for soft inside fabric
- cut one foam pc. (1/2 in. thick)

↙ Fold ↘





Fold

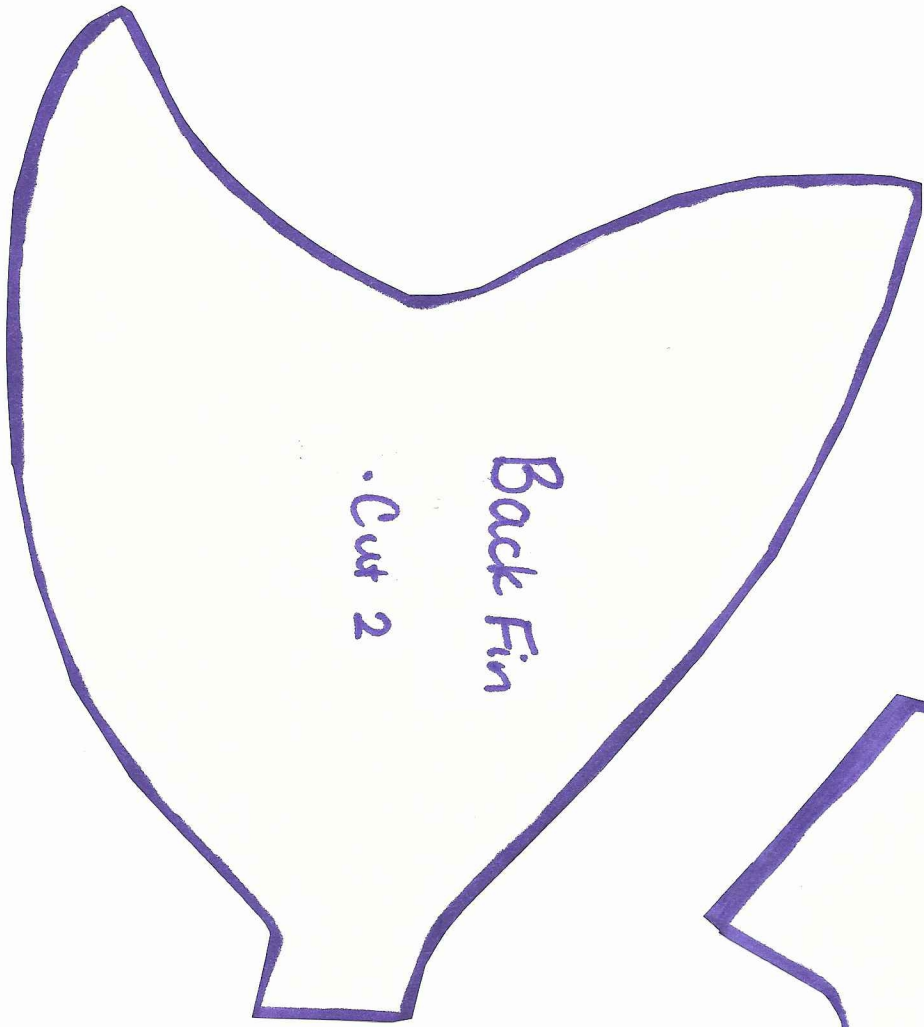


Fold

Mouth

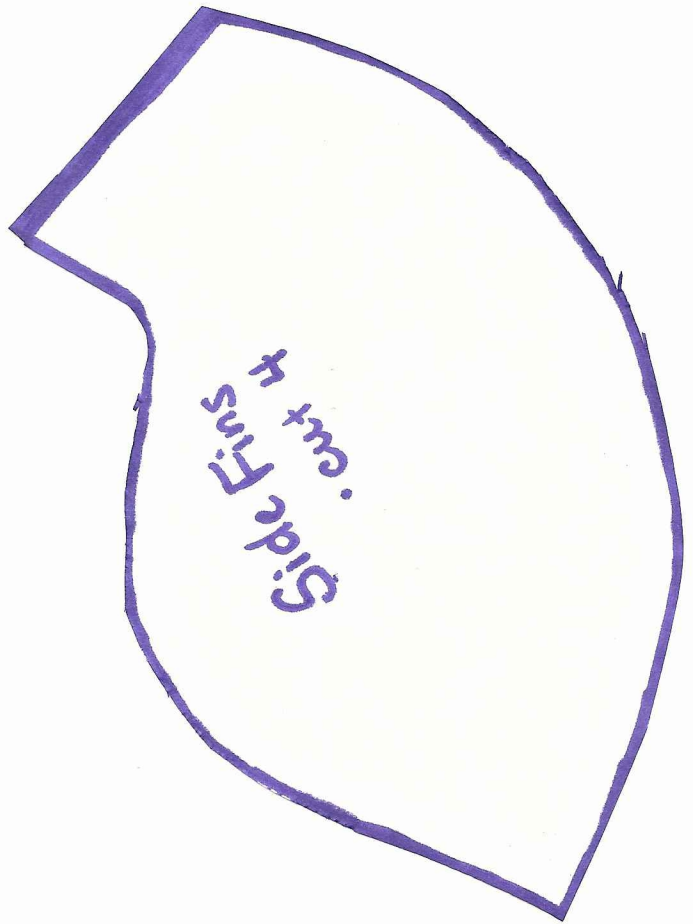
Top

Top Front of Fish Face
• Cut one for outside
fabric
• cut one for soft inside lining



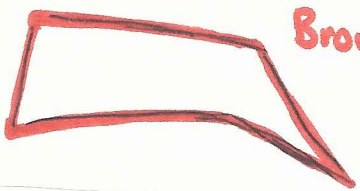
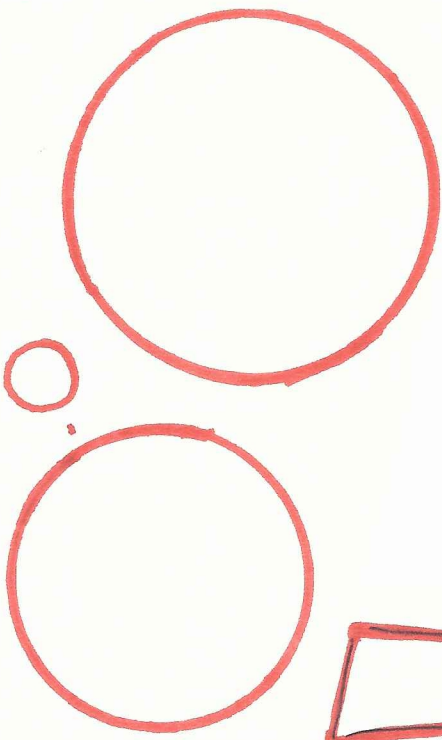
Back Fin

. Cut 2



Side Fins
. cut 4

Eyes



Brow