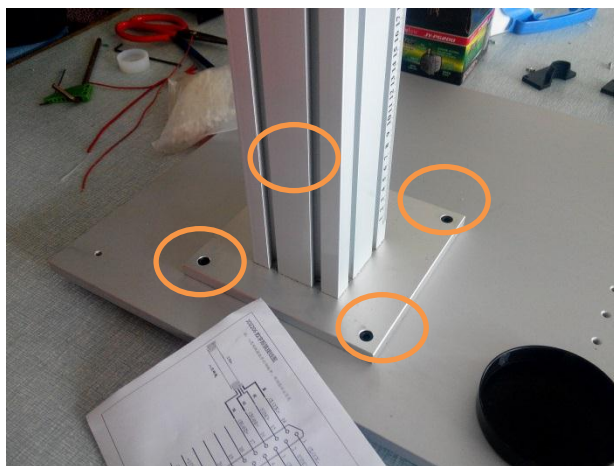


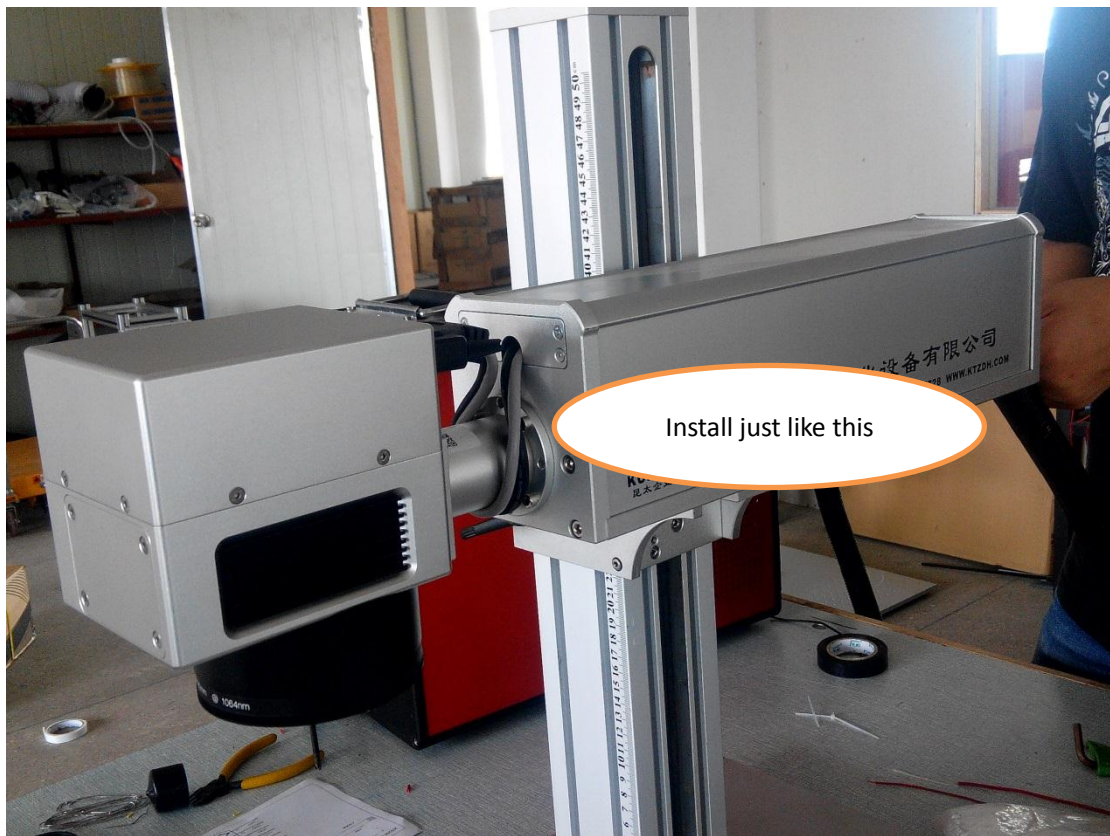
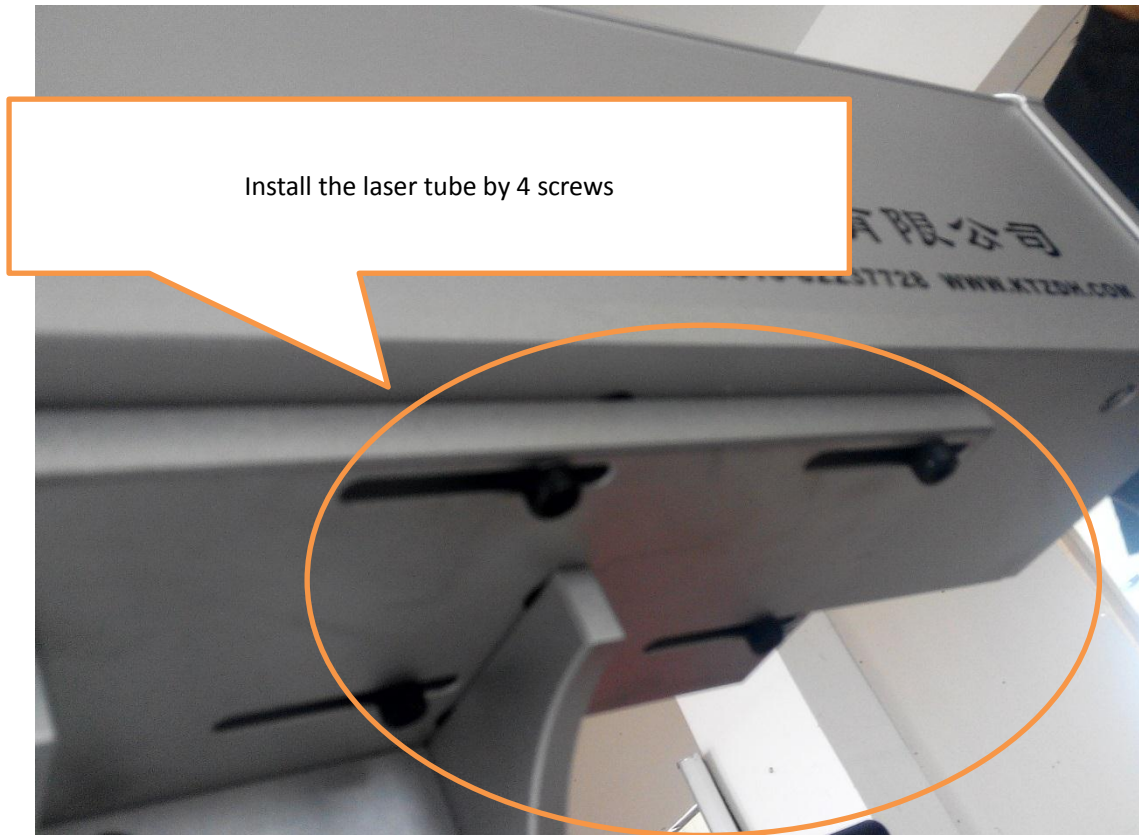


1. Install the column follow this four screw position,



2. Install the laser tube, connect laser tube on the column, follow the

screw position as follow,

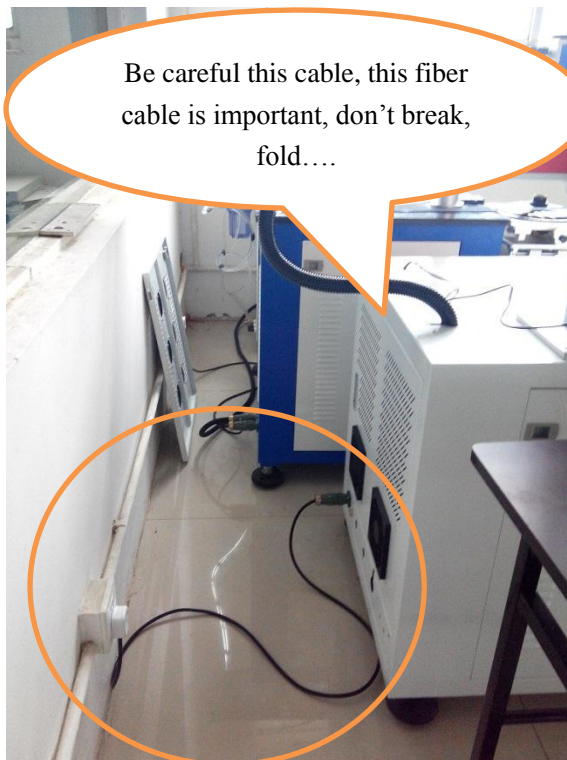


3. Connect USB cable to Lab



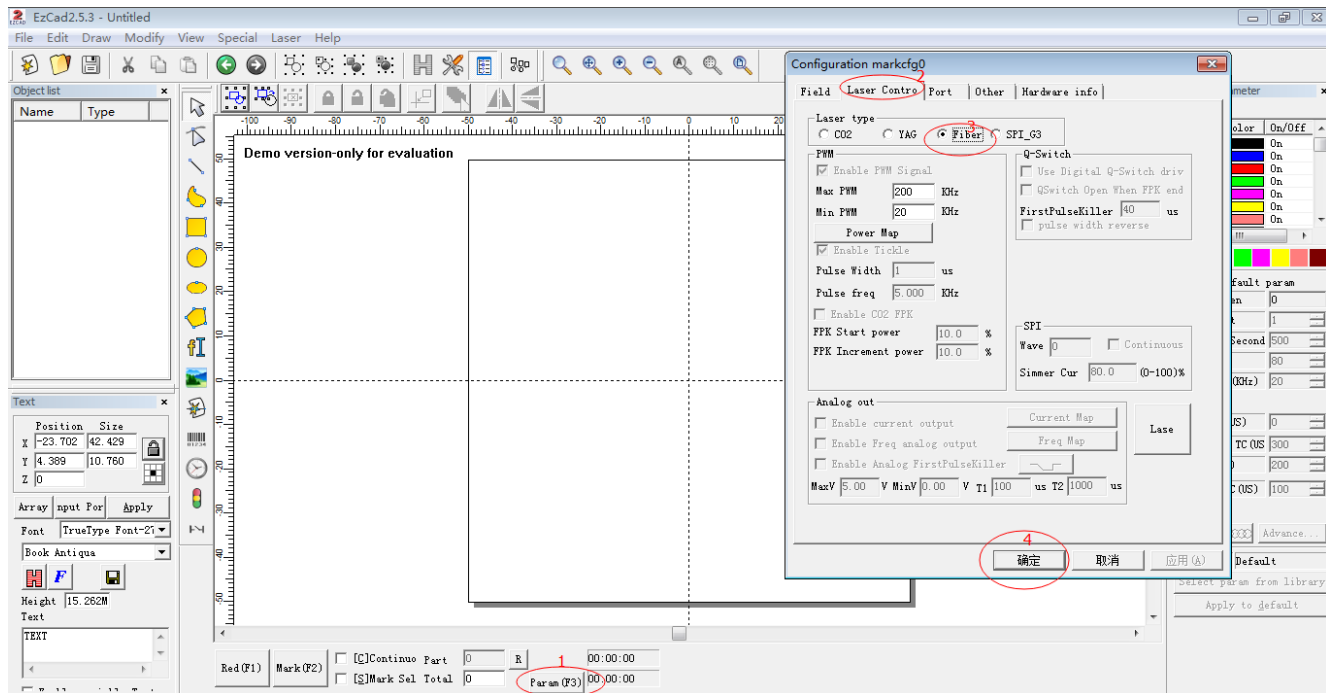


4. Connect the power source cable.

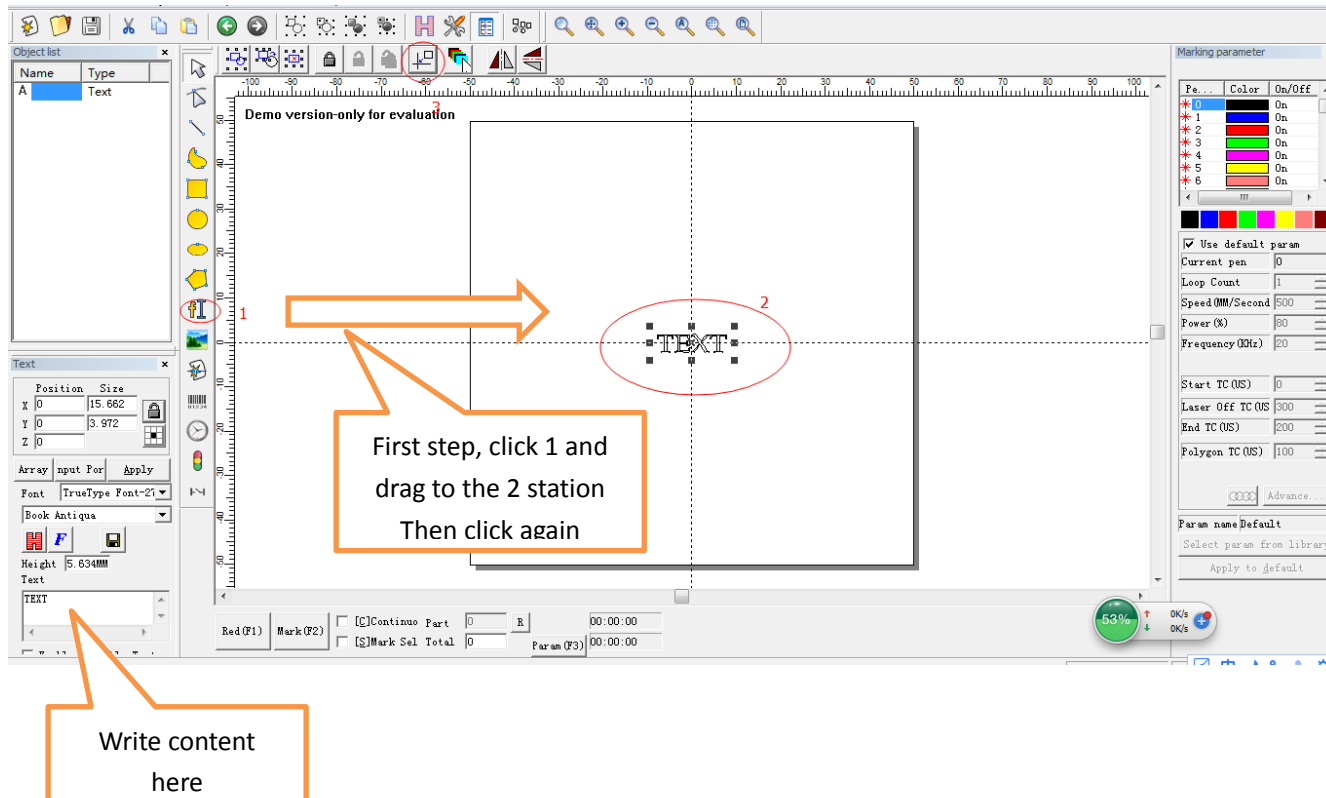


Software Simple guide:

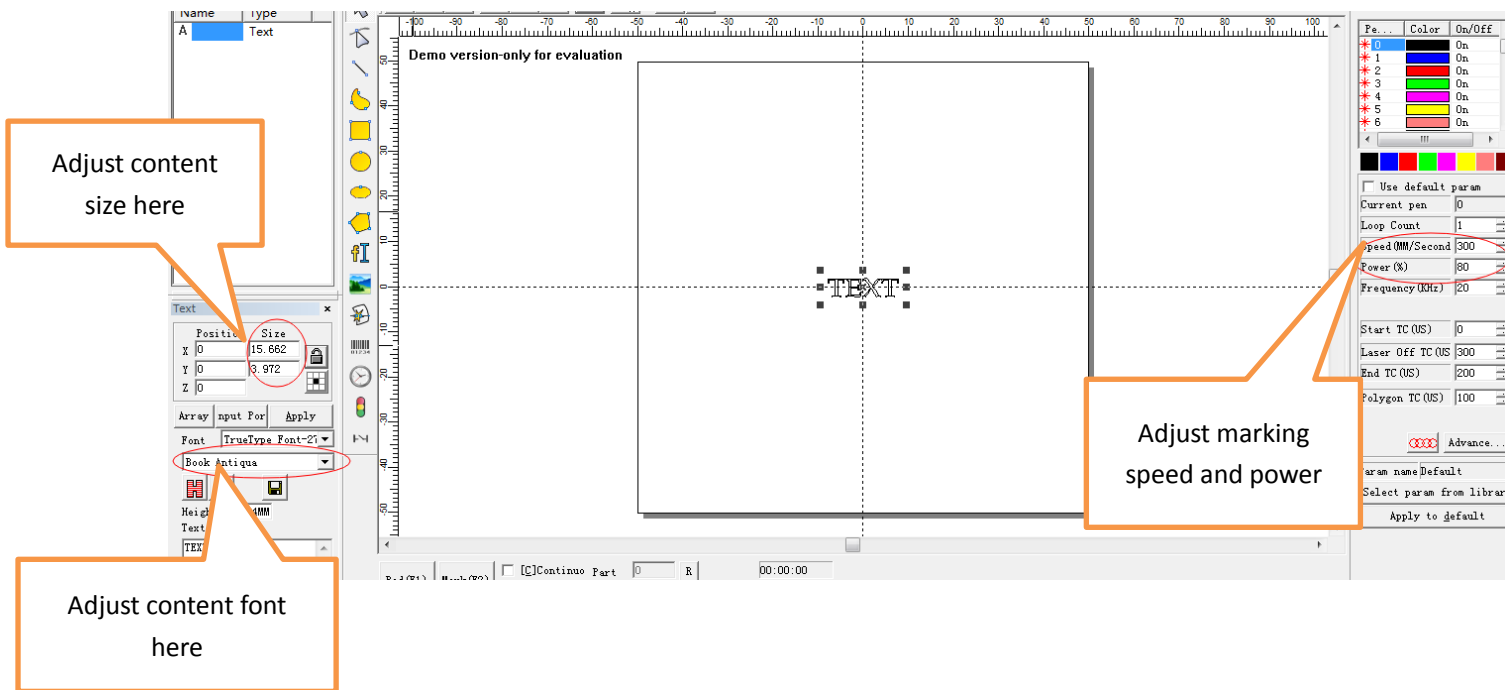
1. Make sure the machine is on Fiber model.



2. Create content.

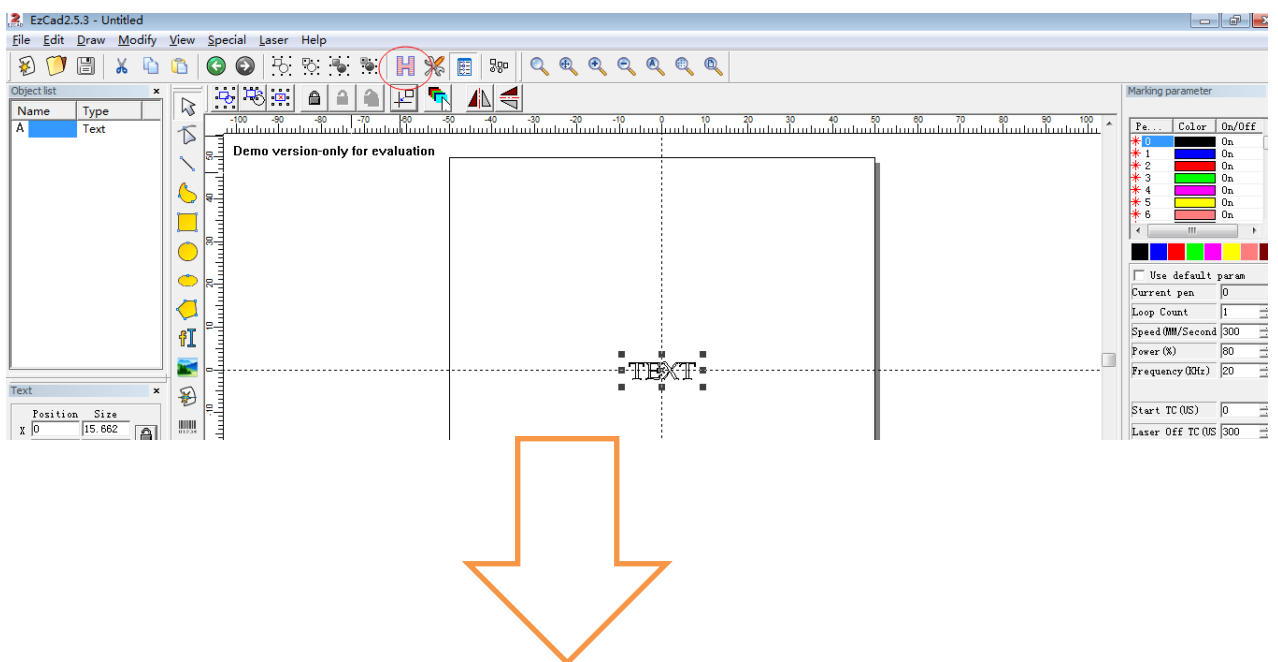


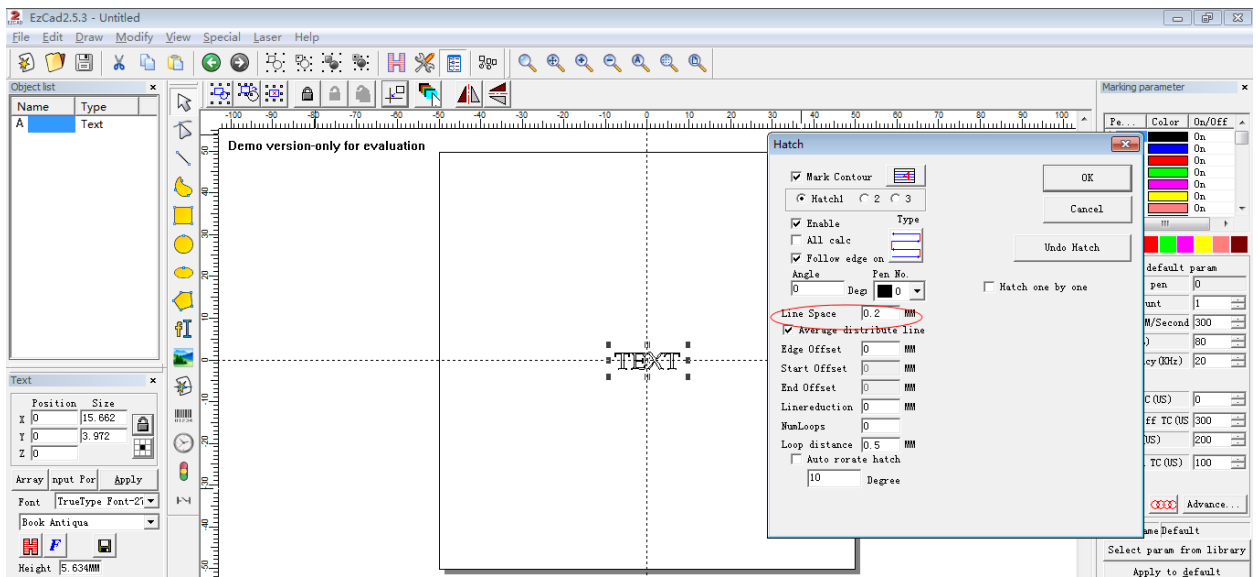
3. Content set



Tips: you could try different power(0~100) and speed (0~1500) , if you want deep marking, you could try high power and low speed,if you want mark fast, could adjust high speed.

4. Infill the content.





Normally you just need adjust line space, different line space will show different marking result, you could adjust from 0.01mm ~0.2mm, we recommend make it 0.05mm~0.1mm

5. Check red line and marking

