

Fascinating Quilt Along



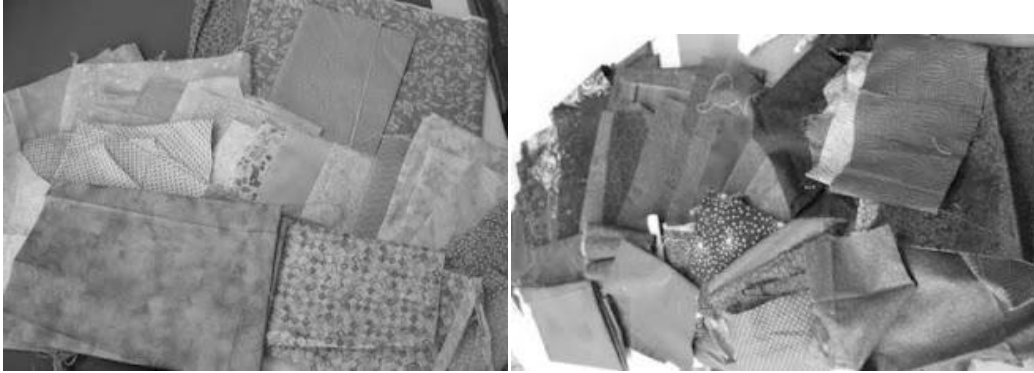
This quilt was originally designed to be an 11 week quilt along. It's a great project for using up fabric scraps. The quilt measures 58 x 82 inches. The design is meant to look chaotic up close and come into focus as you back away.

Gather Your Fabrics

Let's get started by gathering our fabrics. This quilt is great for using up your scraps. The colors don't matter so much but they have to fall into the category of light or dark. I created two piles of fabrics. One lights and the other darks (see photos 1 & 2).



Since we need the colors to "read" as darks and lights you should take a photo of them in black and white to see how close they looked to each other. In my black and white photo of the light fabrics you can see that the two at the top, the blue on the lower right and the yellow at lower left don't quite "read" the same as the other lights (see photo 3). In the black and white photo of my dark fabrics the black on the right side of the pile really "reads" way too dark (see photo 4). All of these were removed from the piles.



Gather the Supplies

PDF step by step directions for each section
Your light fabrics
Your dark fabrics
1 yard border fabric
Batting
Backing fabric
Cutting mat
Rotary cutter
Grid ruler
1/4 inch presser foot for your machine (optional)
Sewing supplies

Recommended Tools

It is very important that you cut and sew as accurately as possible. Some tools that I highly recommend for this project are a rotary cutter, grid ruler, cutting mat and 1/4 inch foot for your machine.

Pressing

The second most important tip is about pressing. Press each seam as you go with a dry iron. Press straight up and down. Do not use steam and do not push the iron back and forth. Both of these will distort, stretch and change the shape of your fabric. You have a lot of seams in this quilt and want to keep everything as accurate as possible.

Cutting Information

This quilt is designed to be a scrap buster quilt made with random light and dark fabrics. The cutting charts will only be written as lights and darks not colors. It will be up to you to randomly cut your fabrics into those two categories.

All measurements will be in inches. Blocks measurements are written in width x length.

Sewing

All seams are 1/4 inch.

Terms used

Blocks - individual cut squares and rectangles
Unit - several blocks sewn together
Section - several units sewn together

Assembly and Viewing help

This quilt has a random assembly. It is not made with a set block size or in equal rows. To keep from getting lost I highly recommend that you keep each section labeled. You can use a flannel sheet or piece of batting as a design wall. Pin your sections to it as you make them that way they will always be in the right spot when you start back again.

<http://funthreads.blogspot.com/>

This design comes into focus as you back away from it. Having a design wall will also help you with viewing the design clearly. Another helpful tip...for some reason viewing the quilt through a camera lens also makes the design easier to see.