



www.flitetest.com

FT 22

Recommended electronics:

- 24 g 1300 kv motor
- 10-25 amp ESC
- 500 - 1300 mAH 3s
- (2) 9 gram servos

Throws:

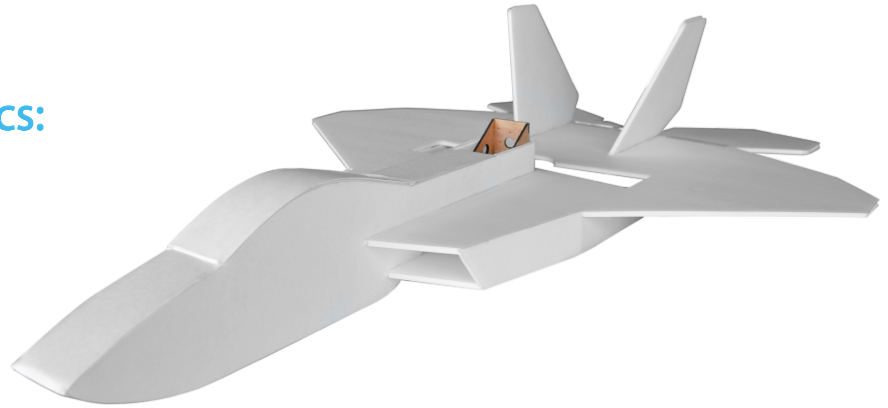
- 40° deflection
- Expo 30%

Weight Without Battery:

8.3 oz (235 g)

Recommended Prop:

9 x 4.7 slow fly



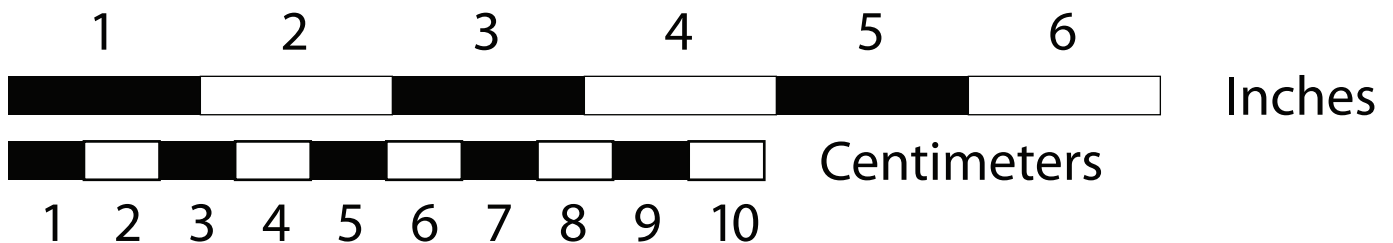
black = cut

red = score 50%

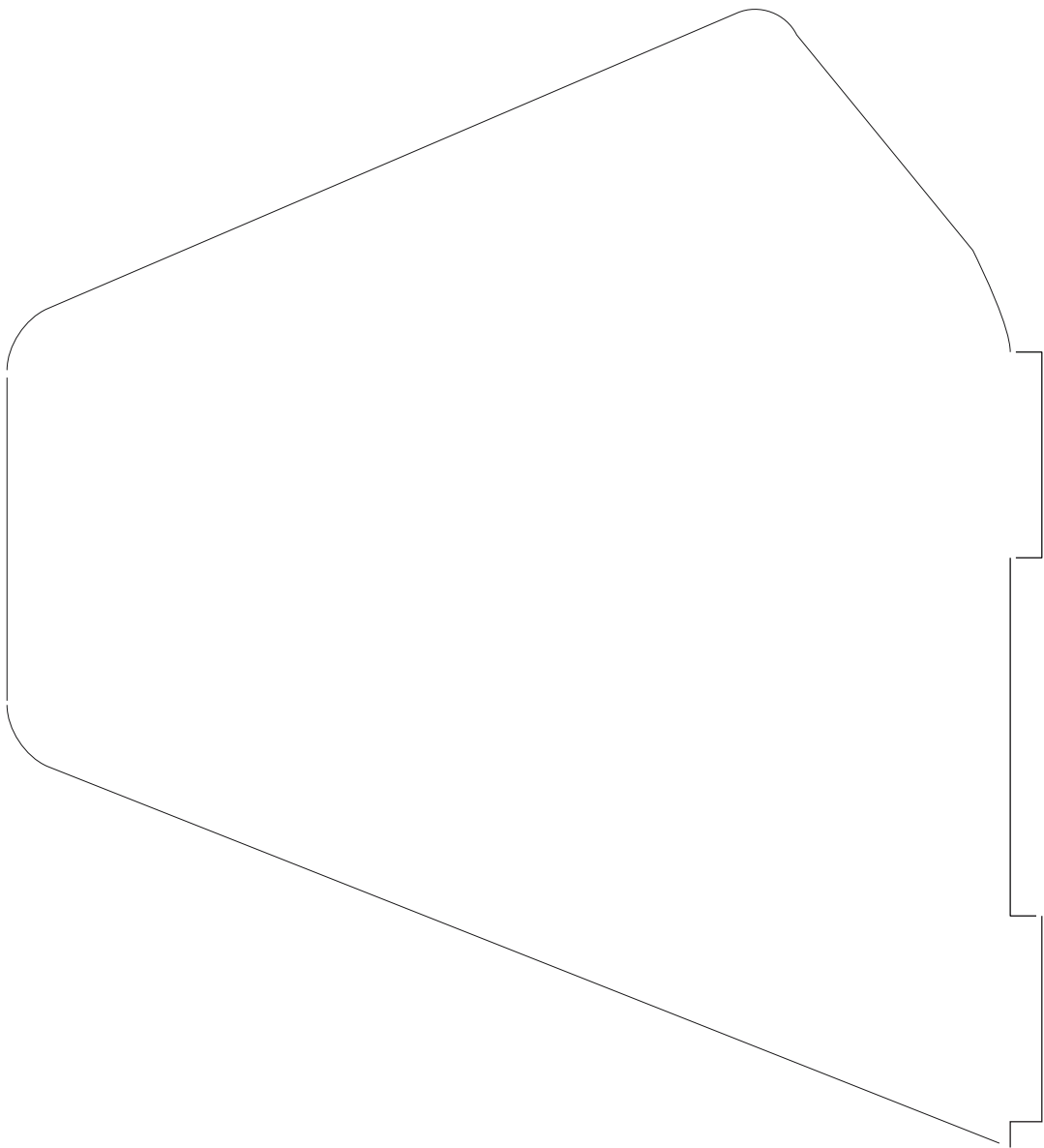
blue = lightly crease

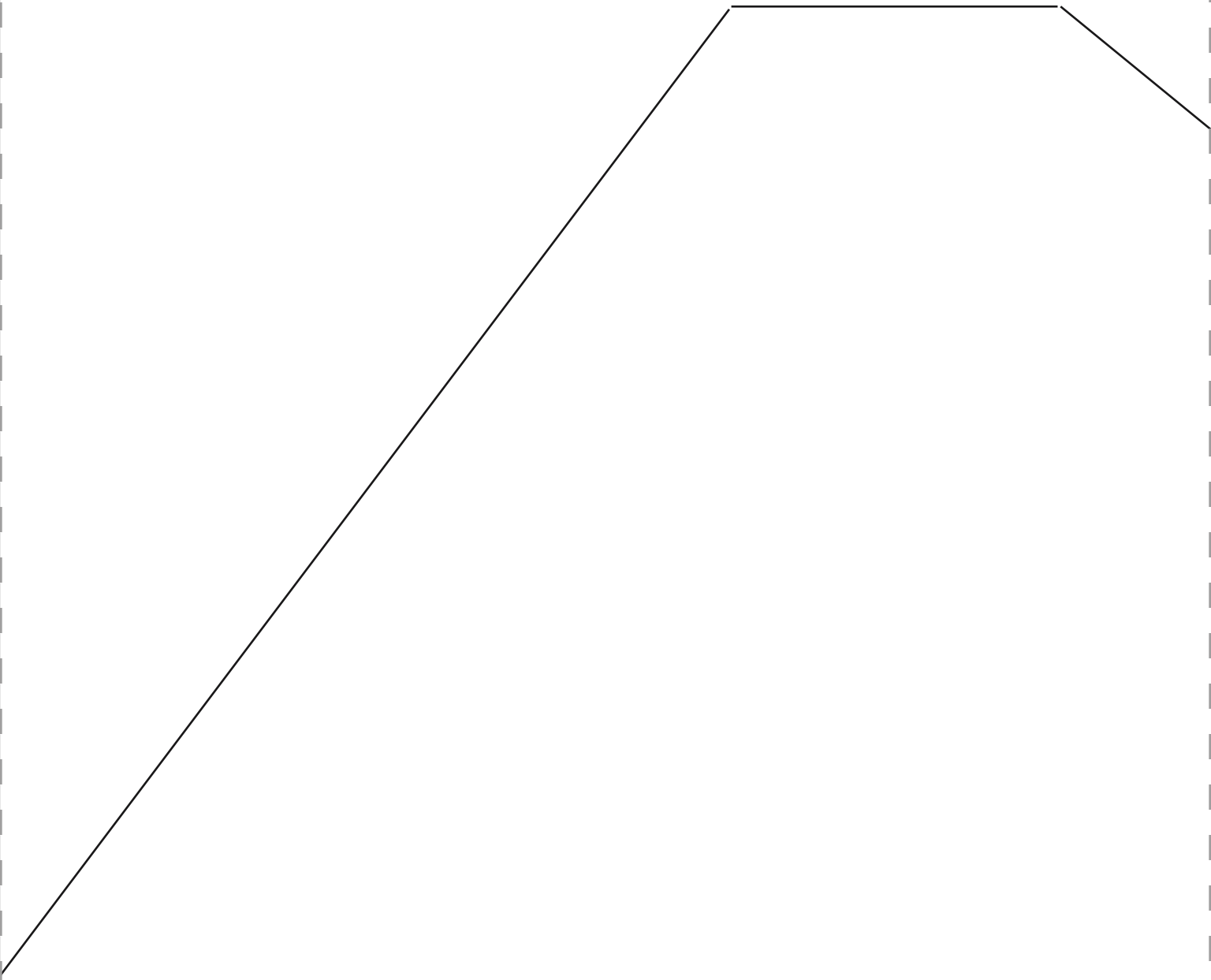
Tiled plans dimensions:

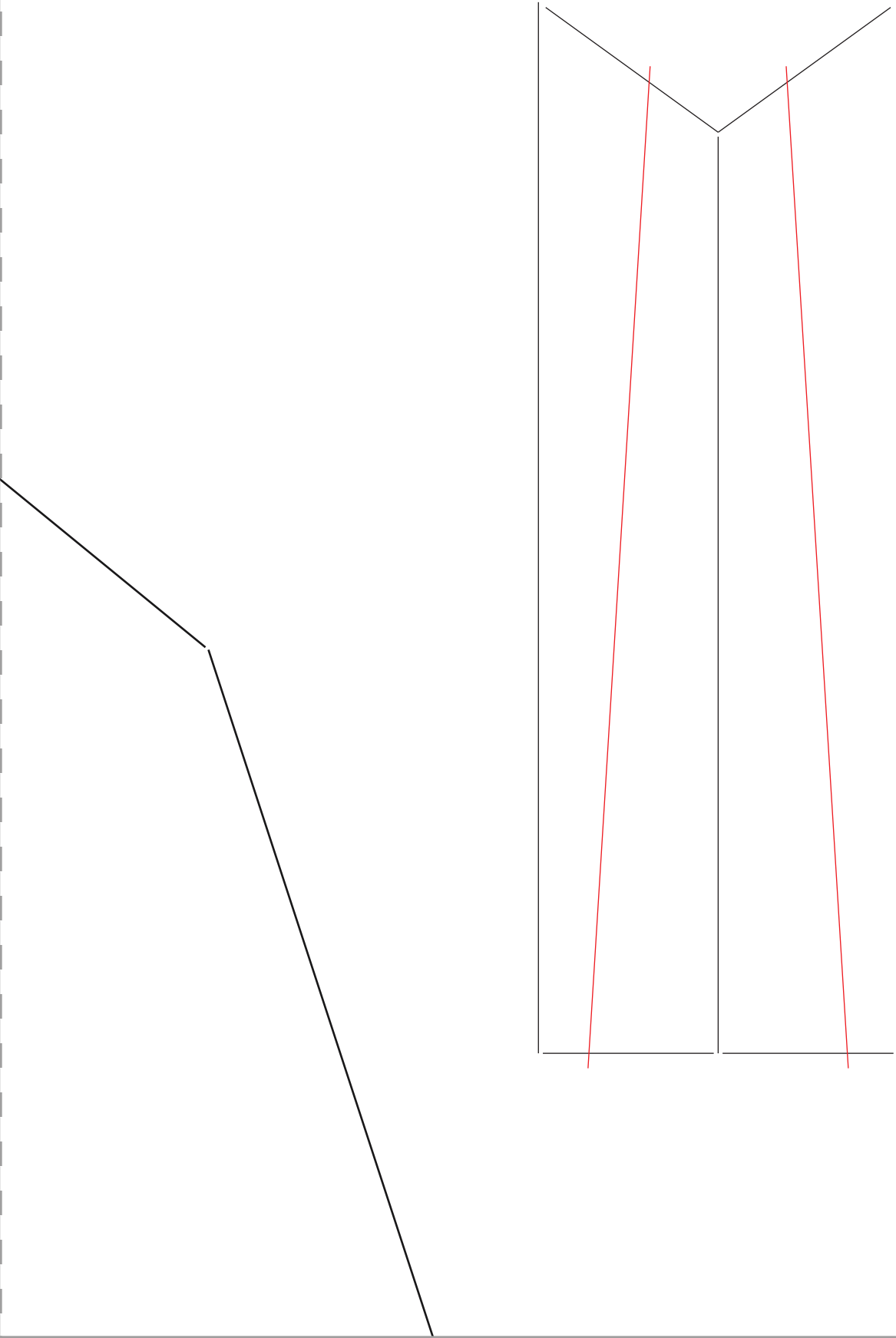
| | | | | | |
|----|----|----|----|----|----|
| 1 | 2 | 3 | 4 | 5 | 6 |
| 7 | 8 | 9 | 10 | 11 | 12 |
| 13 | 14 | 15 | 16 | 17 | |

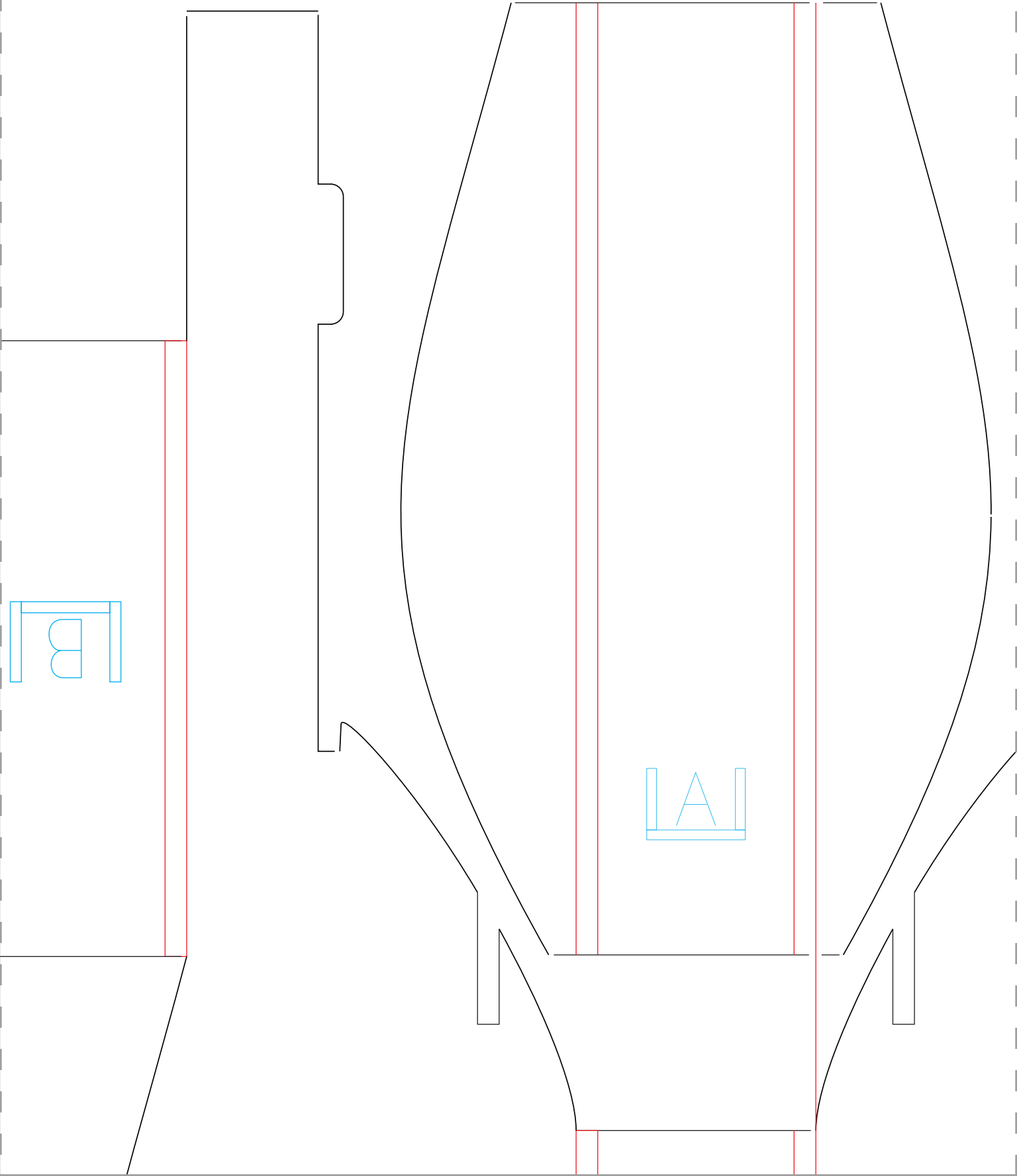


Design By: Josh Bixler



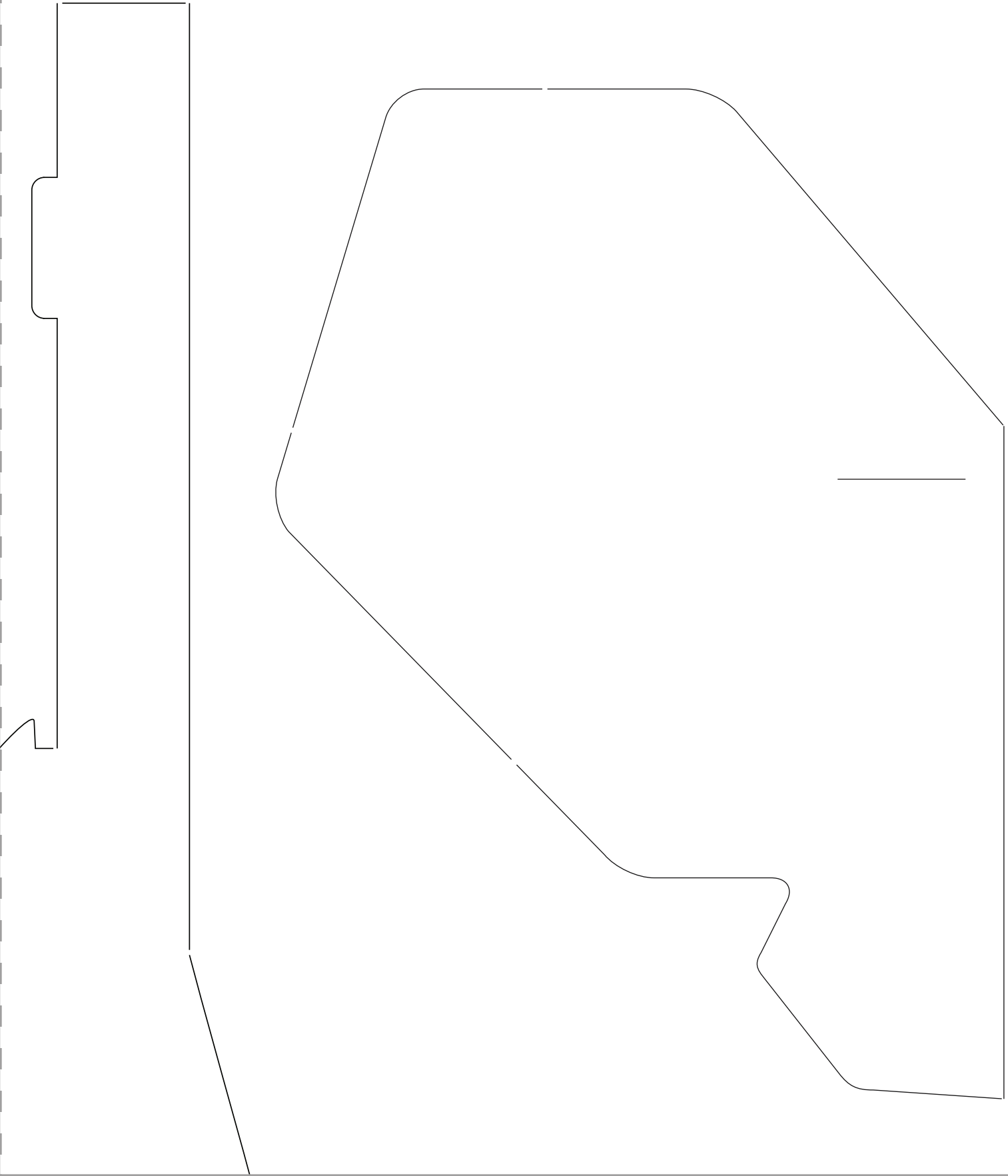






LA

LA



posterboard

FT Elements Simple Firewall (3/32" Aircraft grade plywood)

