

Back - Size 6

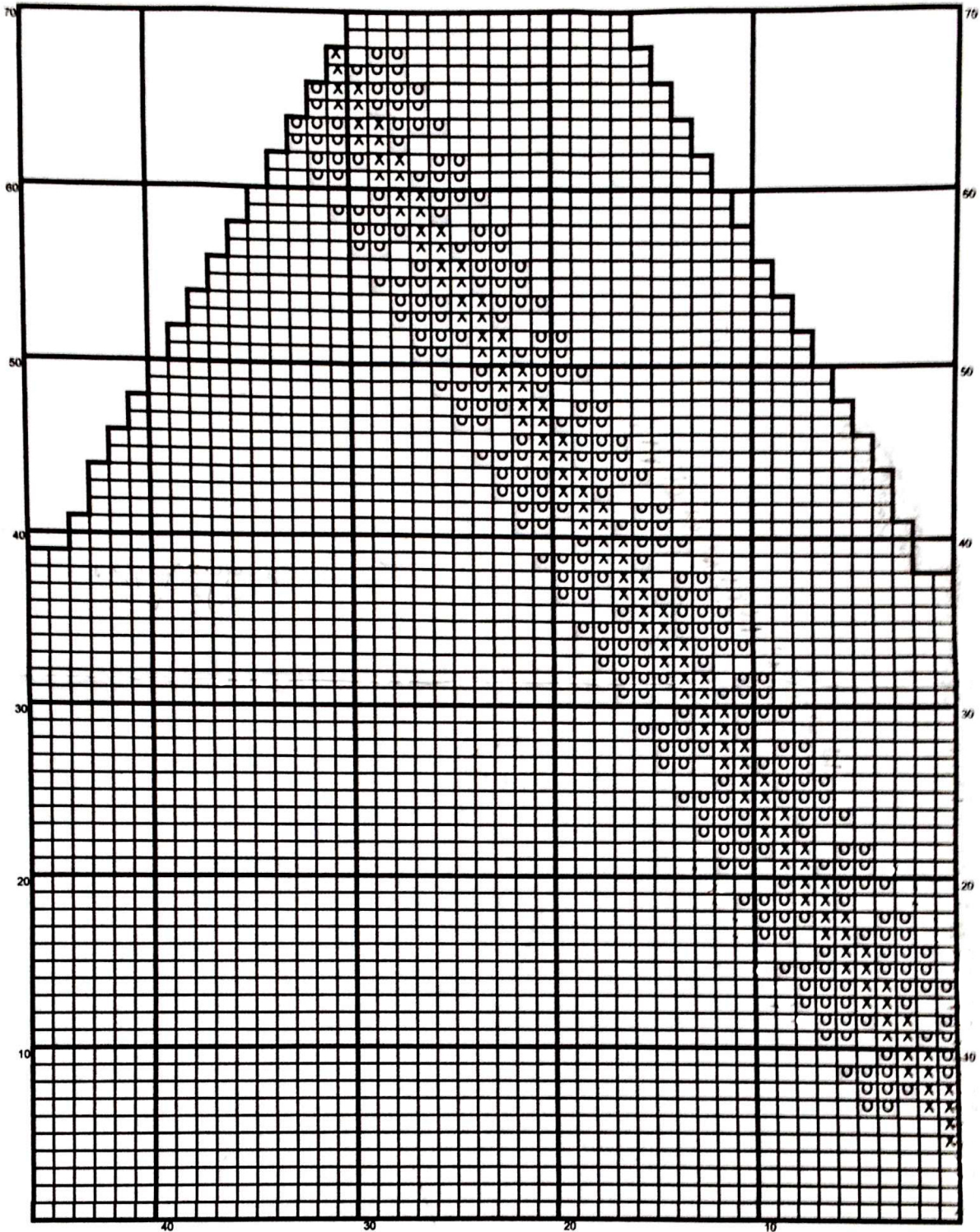
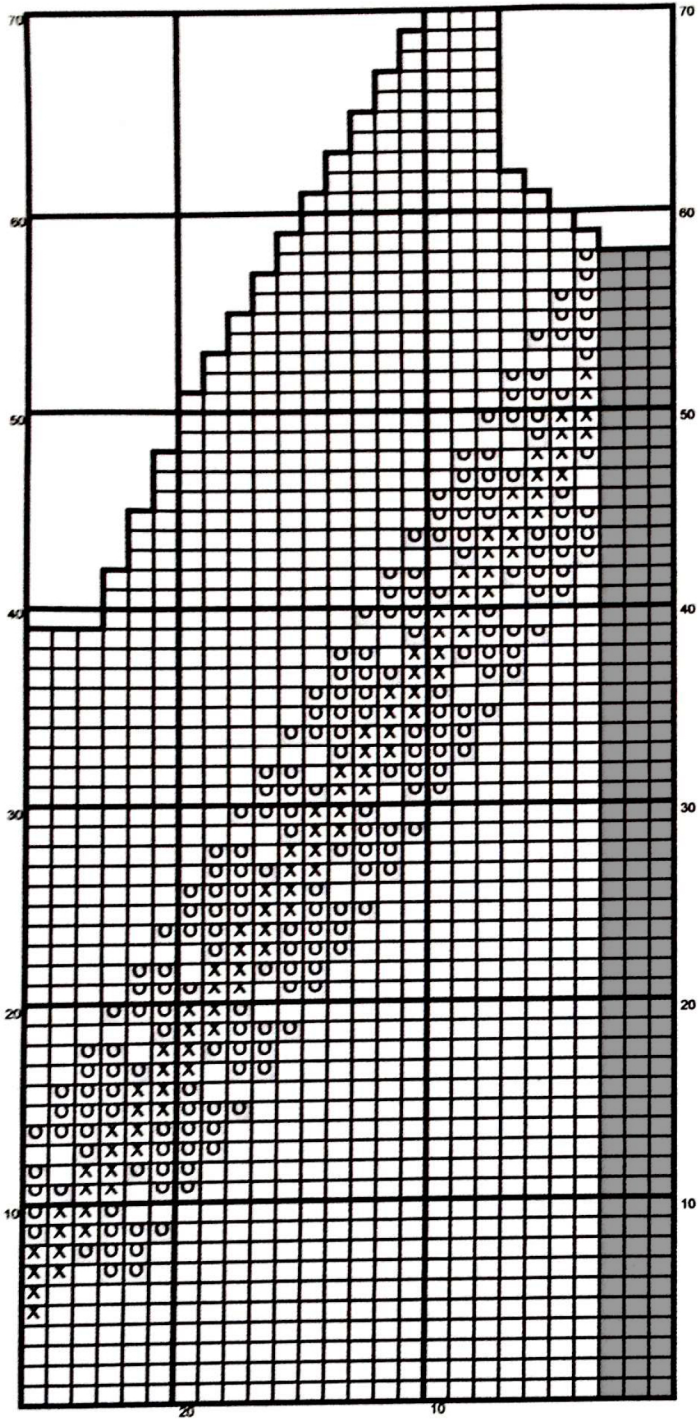


Chart shows back above ribbed band.

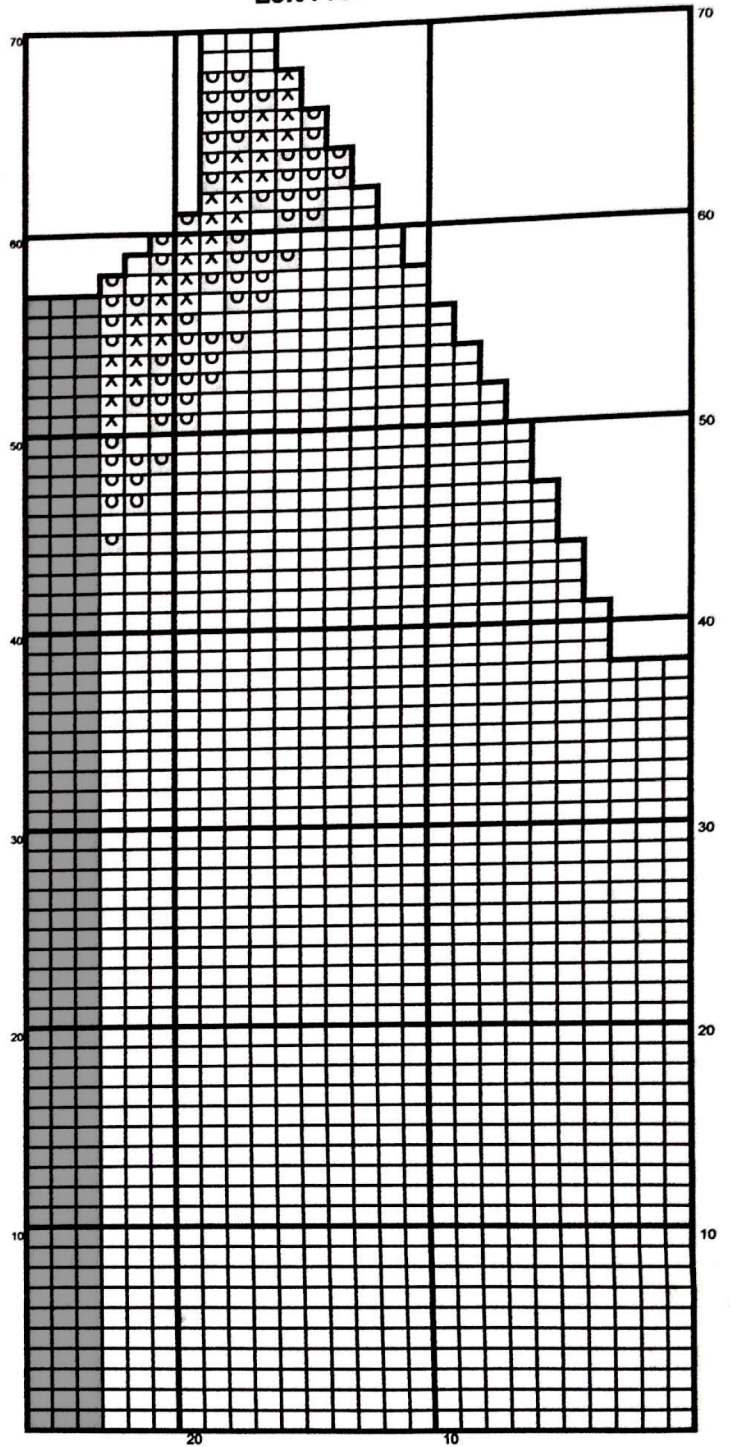
- x Black
- o White
- Brown (w/ fur?)

Use #6 needles for 2" of ribbing and #9 needles for body.

Right Front - Size 6



Left Front - Size 6



**Chart shows right and left front above ribbed band.
Keep three inner stitches in gray in garter stitch.**

Sleeve - Size 6

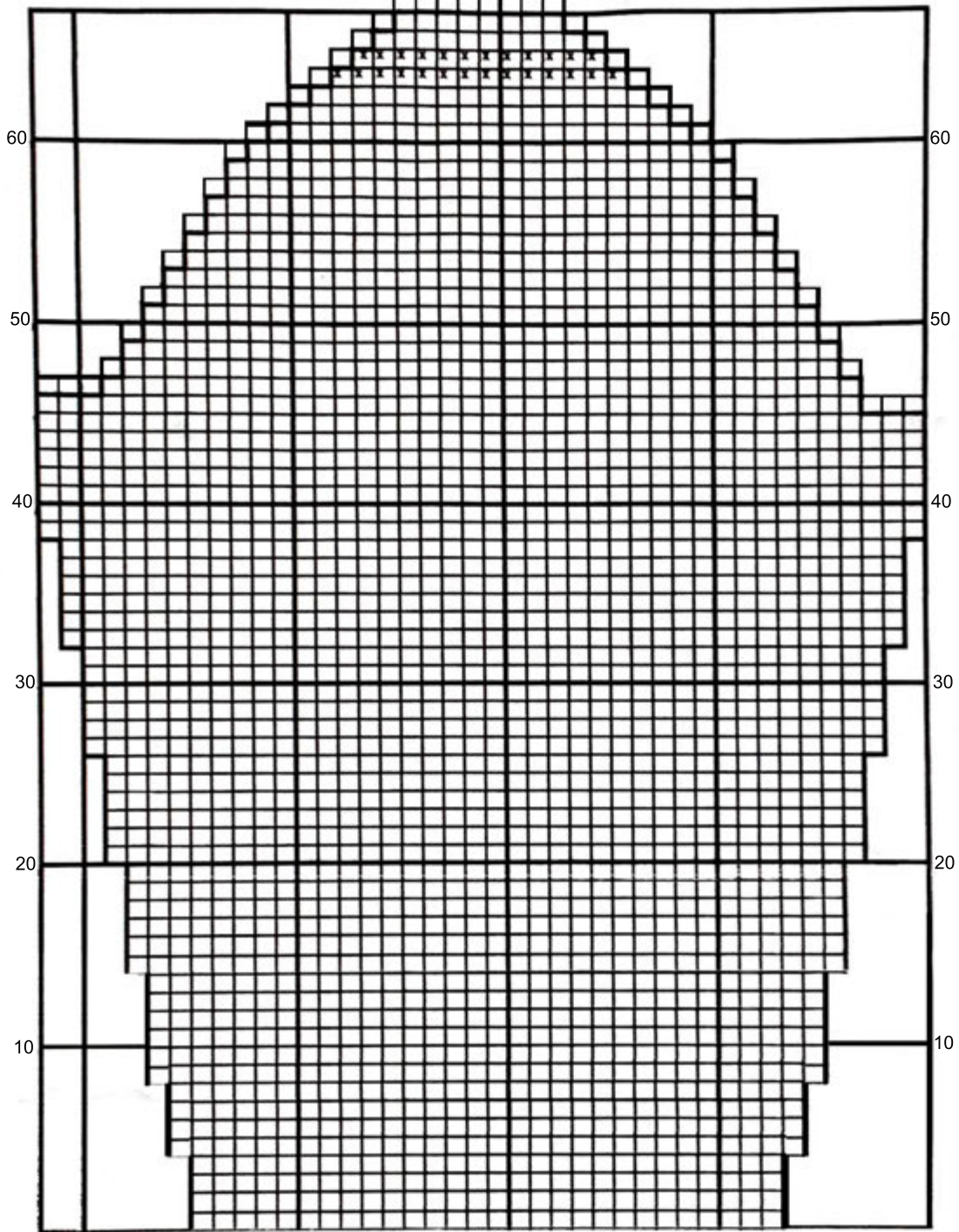


Chart Shows Sleeve Above Ribbed Band
Make 2 sleeves, but only make the black line on the top of the sleeve for the left arm, the other arm will be all brown.

Shawl Collar - Size 6

With larger needles (size 9) cast on 6 stitches.

1st Row: K

2nd Row: K 2 inc in next st to last 3 sts. Incl in next st. K 2

Repeat these two rows twice more (12 sts on needle).

7th Row: K

8th Row: K 2 inc in next st. K to end

Repeat the 7th and 8th rows 3 times more (16 sts on needle)

Knit 46 rows even

Now begin to shape for the other side

61st Row: K to last 4 sts. K 2 tog. K 2

62nd Row: K

Repeat the last 2 rows until 12 sts remain

Next Row: K 2, K 2 tog, K to last 4 sts, K2 tog, K2

Next Row: K

Repeat the last 2 rows until 6 sts remain

Cast off