

Portable Fiber Laser Marking Systems (HS-FL20/HS-FL30)



Laser power range

- 20W (HS-FL20)
- 30W (HS-FL30)



- Advanced laser generation offers greater output stability
- High-speed Galvo scanner results in a 20% speed increase
- Marks perfectly accurate characters in very small areas
- Offers increased flexibility and convenience
- Eco-friendliness helps combat environment damage
- Increased savings with low power consumption

Optional Designs:

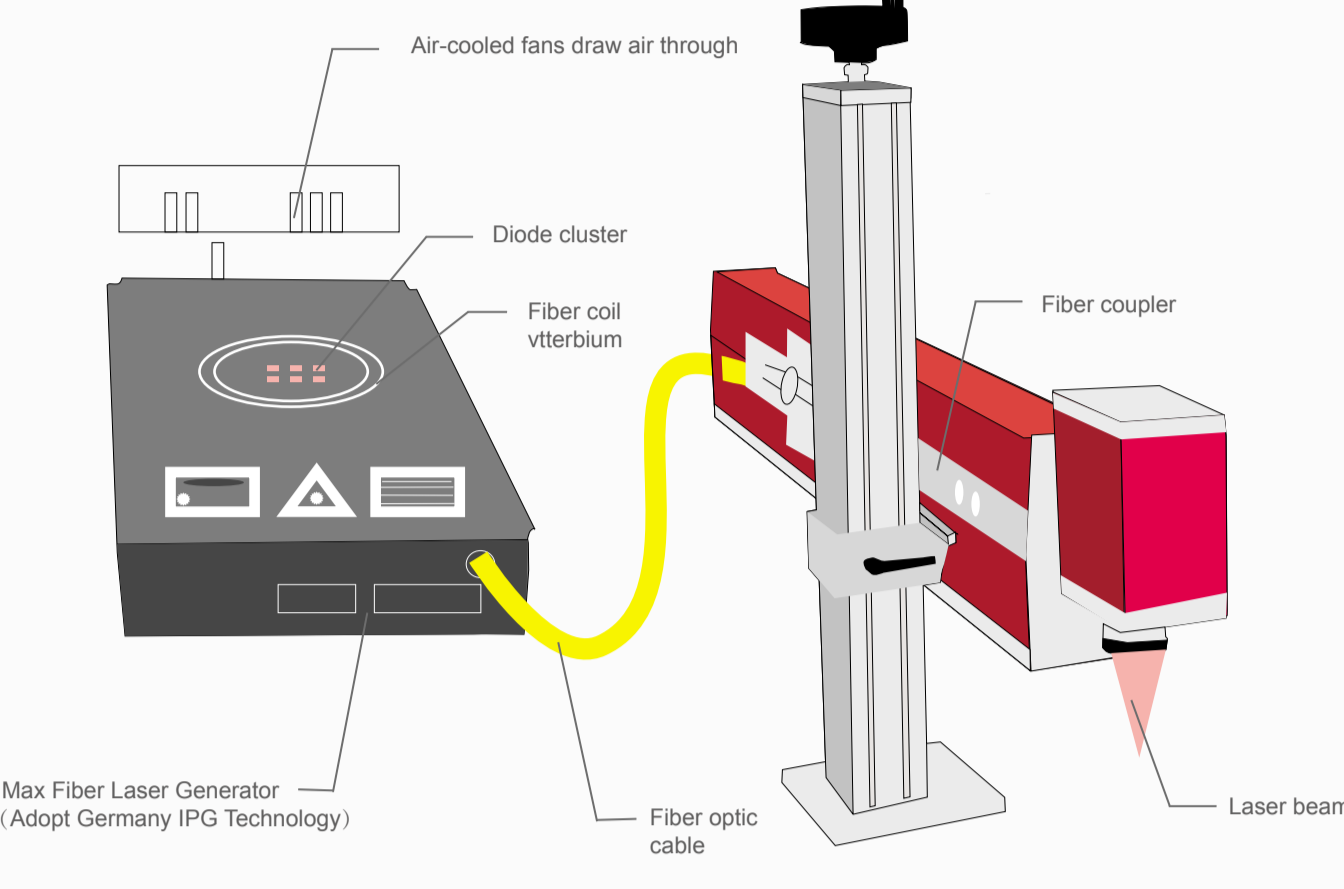


- Small fiber laser marker
- High level of part integration
- Suitable for small-part marking



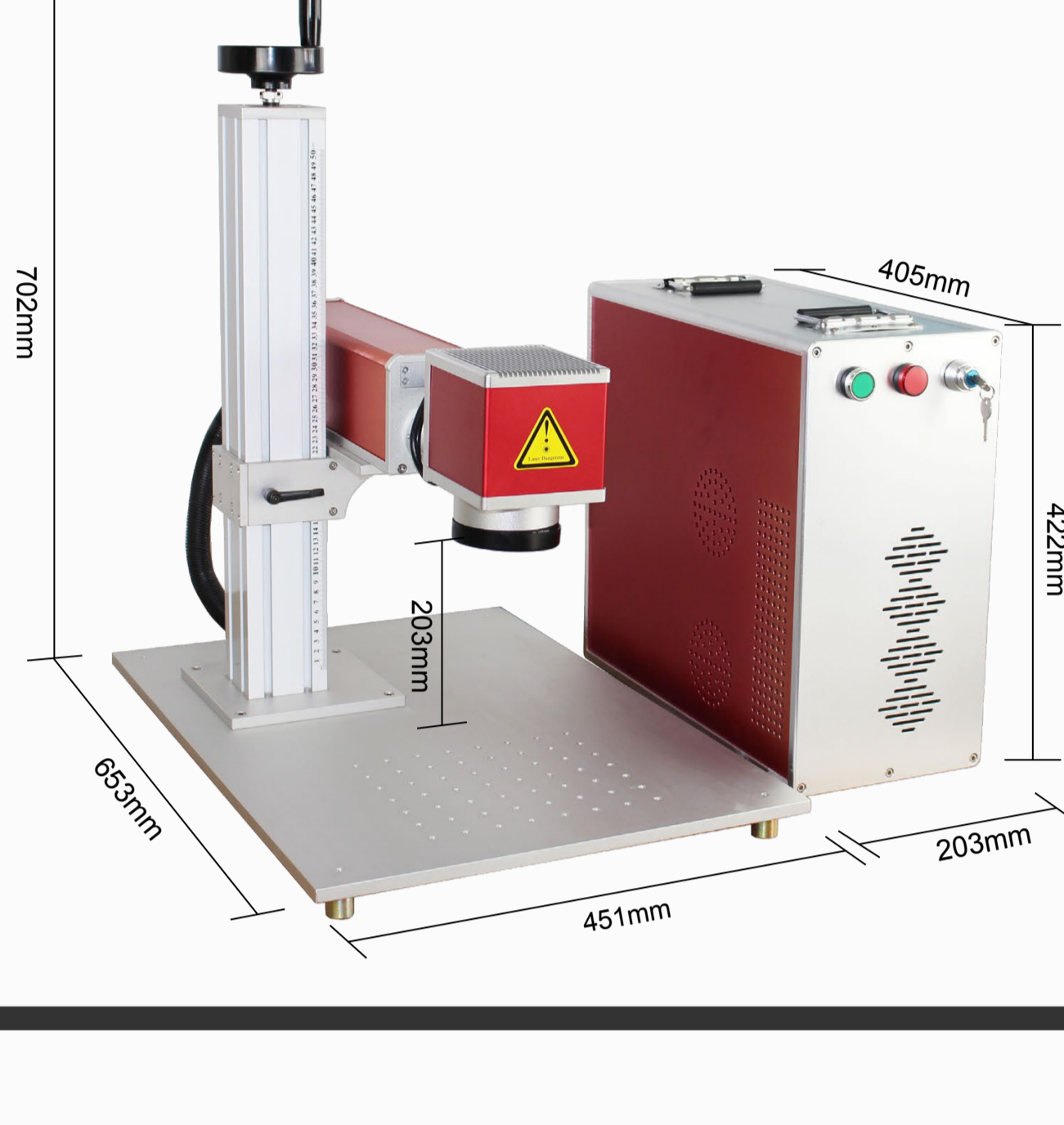
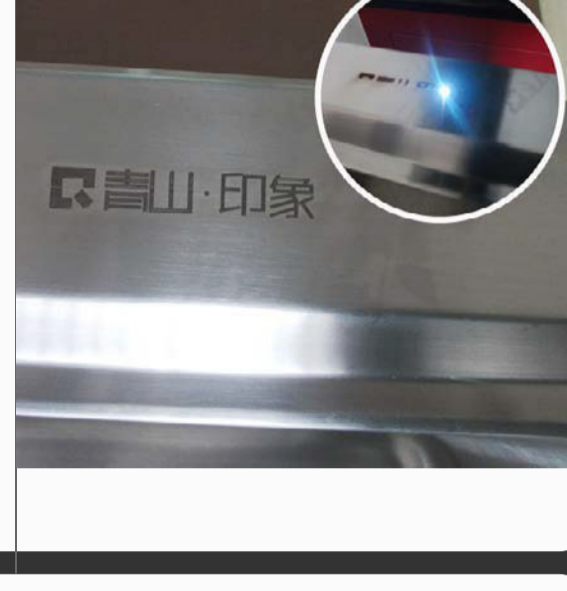
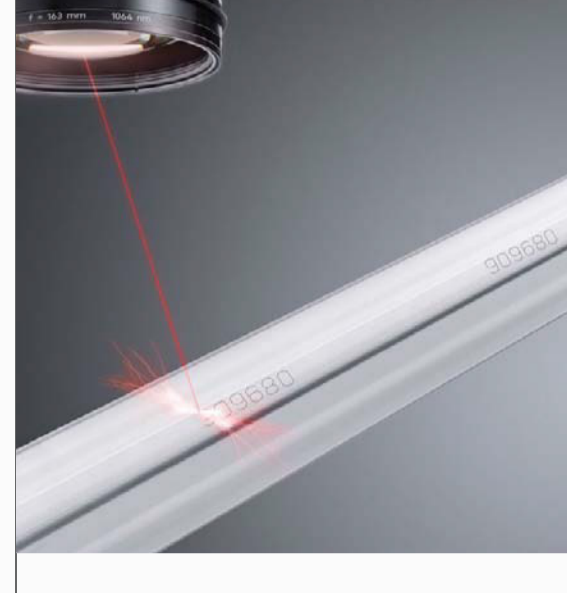
- Portable fiber laser marker
- Easy to move and operate
- Suitable for big-part marking

Fiber Laser Technology



The Fiber Laser marking machine offers the best electro-optical conversion rate. It is fitted with the world's most advanced laser generator. The machine is superior in many ways. It is robustly built, the power output is stable, has a good air cooling system and a great design.

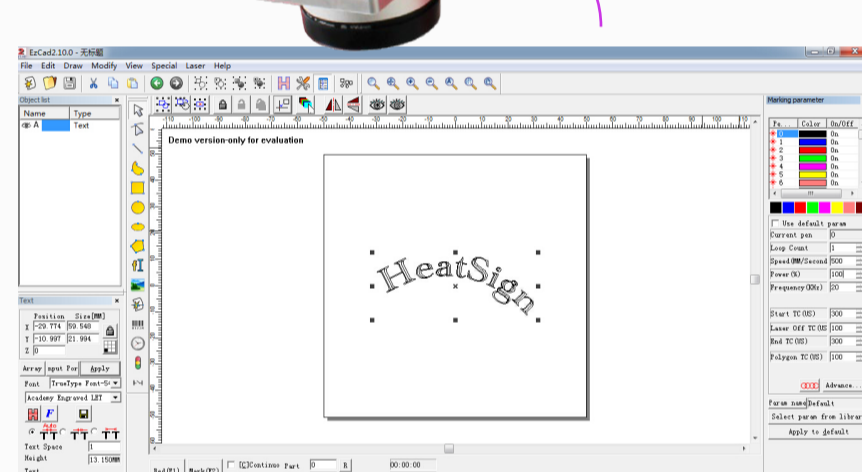
The laser generator contains a Fiber Bundle that is doped with Ytterbium, and light emitting diodes are then pumped into it. The laser light is then fiber delivered to the optical head that consists of a beam expander, collimating optics and back reflection protection.



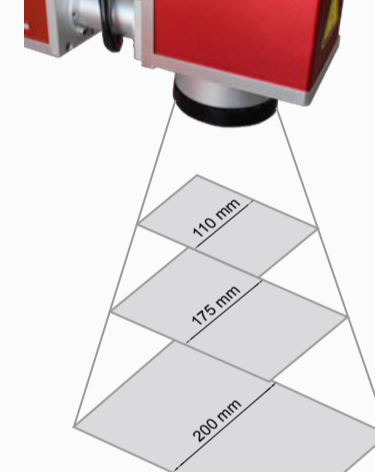
Features & Benefits

- Performance.**
 - Highly versatile and offers high-precision marking
 - Marks all surfaces with a min. line width of 0.01mm
 - Bar Code/2d Code marking possible
 - High speed marking of up to 7000mm/s
 - Supports high-definition logo and image marking
- Ease-of-Use**
 - Easy to move and operate
 - Maintenance free
- Reliability**
 - No fear of shock during operation
 - Superior quality laser module (working life 50000 – 100000 hours)
 - Ability to work 24/7 continuously
- Security.**
 - Efficient water cooling system
 - The high-speed flow pump offers working stability
 - Standard CE certification eliminates all risk for users

Laser source 20W(HS-FL20) 30W(HS-FL30)



Marking area: 110 x 110 mm / 3.9 x 3.9 inches
Option: 175 x 175 mm / 6.7 x 6.7 inches
Option: 200 x 200 mm / 8.3 x 8.3 inches



Model	HS-FL20	HS-FL30
Laser Type	Fiber laser	
Power Output	20W	30W
Standard Marking Area	110mm x 110mm	
Optional Marking Area	175mm x 175mm/200mm x 200mm	
Marking Speed	≤7000mm/s	
Repeated Precision	0.001mm	
Wave Length	1064±10nm	
Frequency Of Pluse	20-80KHZ	
Marking Depth	≤0.15mm (depends on material)	≤0.25mm (depends on material)
Mini Line Width	0.01mm	
Mini Line Characters	0.2mm	
Power Supply	AC220V±10% 50Hz or AC110V±10% 60Hz	
Cooling	Air cooling	
Operation Temperature	10-35°C	
Laser Generator Life	50000~100000 hours	
Software	EZCAD (PC required)	
System / Compatible Formats	Windows XP ,7.8.10 /AI, PLT, DXF, DST, BMP, JPG, JPEG, PNA, TIF etc.	

Applications & Materials

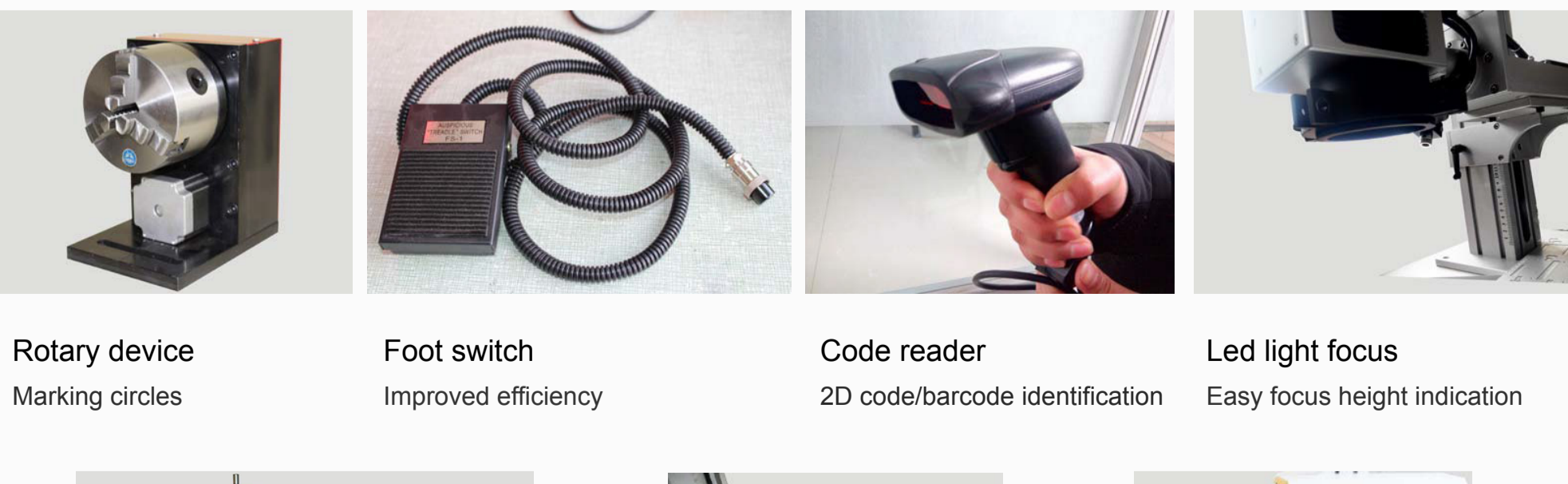
The HS-FL 10/15 Series Fiber Laser marking machines can mark an inexhaustible range of metals and alloys. Listed below are just some of the materials:



Materials	Mark	Materials	Mark
Alloy	√	Hardware	√
Copper	√	Mobile Phones	√
Aluminium	√	Eye Glass Frames	√
Zinc	√	Clocks And Watches	√
Rare Metals	√	Plastic Buttons	√
Electronic Components	√	Building Material	√
Integrated Circuits(IC)	√	Chemical And Food Packaging	√
Electrical Appliances	√	Medical Instruments	√
Pvc Pipe	√	Metallic Oxide	√
Plate Surface	√	Alarm	√
Commodity	√	Printed Material	√
Brass	√	Auto Spare Parts	√
Precision Equipment	√	ABS	√
Tool Accessories	√	Motor Accessories	√

- All metals and alloys (iron, copper, aluminum, magnesium, zinc etc.)
- Rare metals and alloys (gold, silver, titanium etc.)
- All types of metal oxides
- Specially treated surfaces (anodized aluminum, phosphating, electroplating etc.)
- Material coated surfaces

Options & Accessories



- Rotary device**
Marking circles
- Foot switch**
Improved efficiency
- Code reader**
2D code/barcode identification
- Led light focus**
Easy focus height indication



Frame protection system



Automatic round table



Production marking line