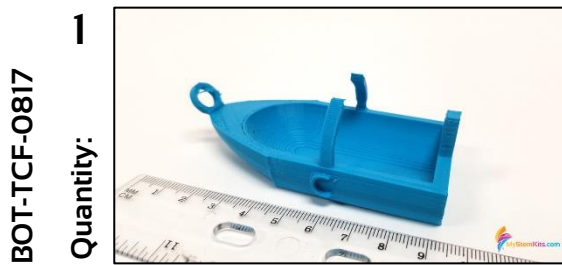


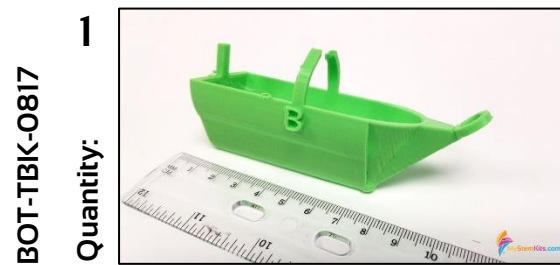
**Boat A**



**Boat C**



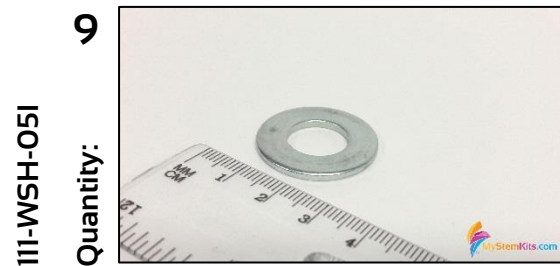
**Ramp**



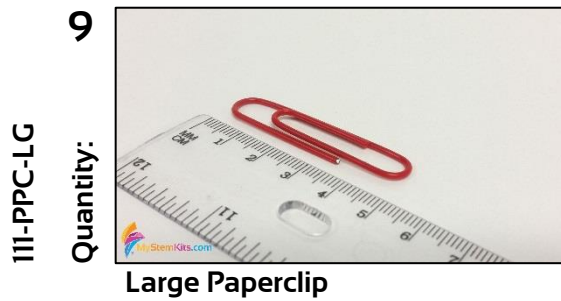
**Boat B**



**Boat D**



**1/2" Washer or Penny**

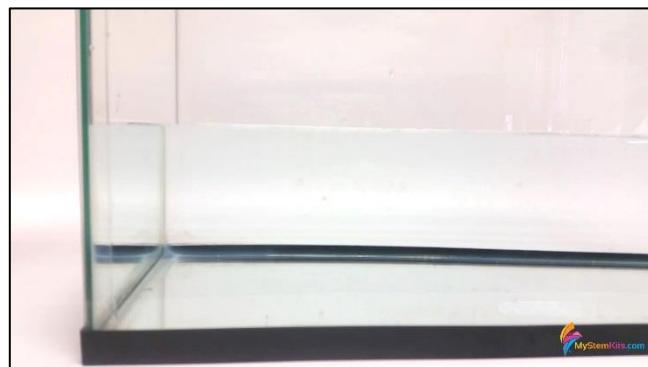


3D printed parts pictured in the below Assembly Guide are from our other version of this kit. The function is exactly the same between the pictured boats and the ones available in this Instructable.

**Step 1:**  
Remove all supports as necessary. See before below and after to the right.

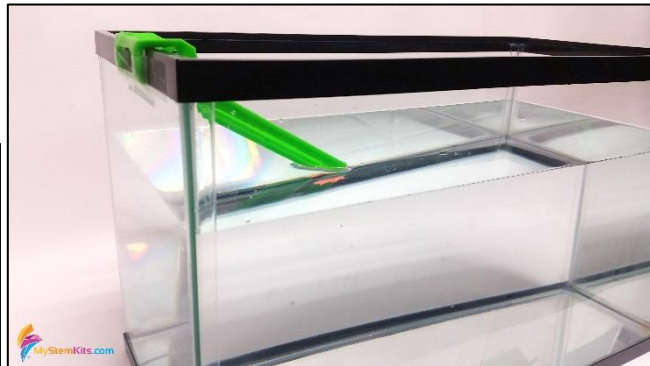


**Step 2:**  
Fill a fish tank or large plastic container with water.



### Step 3:

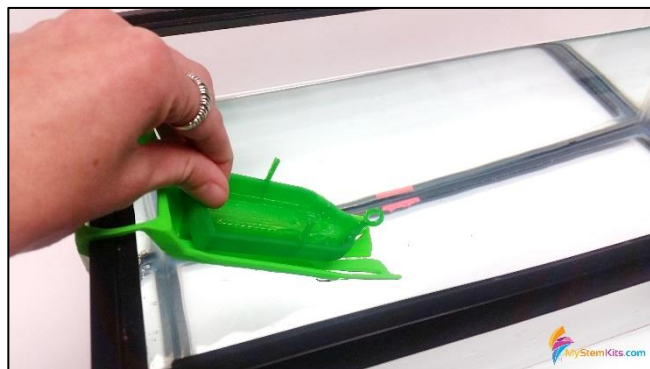
Secure the ramp to the side of the fish tank. Use tape to hold in place. Make sure the water height overlaps the ramp.



### Step 4:

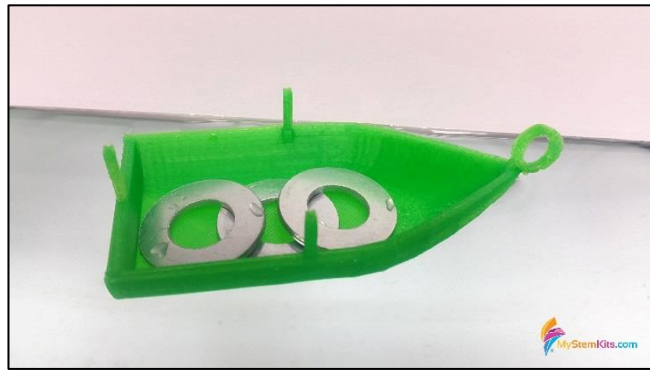
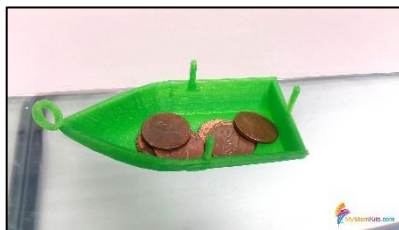
To test for speed and ability to travel in a straight line, use the ramp. Hold the boat by the back peg up to the rear of the ramp. Release.

If the front of the boat dips into the water before leveling out, add more water and retest.



### Step 5:

To test for carrying capacity, use washers or coins and add weight until the boat sinks.



### Step 6:

To test for stability, loop paperclips onto the pegs until the boat capsizes.

