

SPECIFICATION FOR APPROVAL

产品承认书

CUSTOMER: _____

CUSTOMER NO. : _____

JXD PART NO. : B1601S

DESCRIPTION: 10/100 BASE-T MAGNETICS MODULES

ATTACHMENT:

■ SPECIFICATION

■ SAMPLE Q'TY OF SAMPLES _____ PCS

CUSTOMER APPROVAL
(客户承认章)

JXD APPROVAL
(公司承认章)

SALES BY:

SALES BY:

QA DEPT. :

CHECKED BY:

ENG. DEPT.:

APPROVAL BY:

華 馳 精 密 股 份 有 限 公 司

W A H S O N I C Corporation

TEL: 03-5358977

FAX:03-5322132

PLEASE REPLY THIS SHEET TO US AFTER SIGNATURE(请签字后回传本页)

1. FEATURES:

- 1.1 Compatible with various 10/100 Base-TX transceiver requiring 1:1 transmit and 1:1 receive turns ratio
- 1.2 Compliant with IEEE 802.3 standard including baseline wander compensation specification of 350uH OCL when Biased at 8mA from 0°C to 70°C
- 1.3 Low profile Surface Mount Packaging designed for Hi-Temp Reflow Process
- 1.4 Single channel interface for 10/100Mbps Ethernet applications with CMC's tuned to Enhance EMC system performance
- 1.5 Operating Temperature range:0°C to 70°C

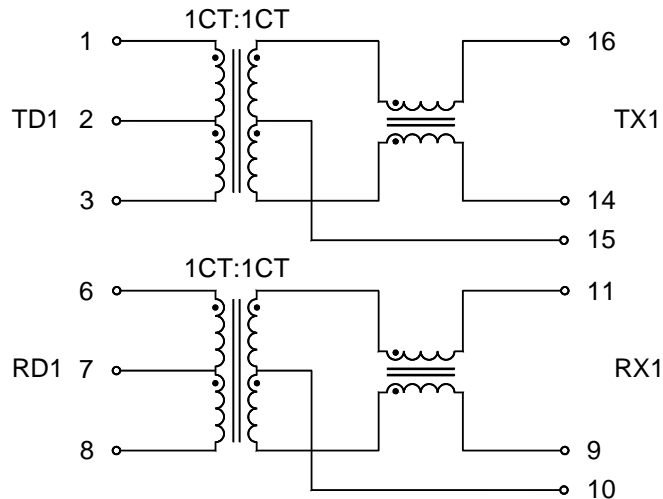
2.ELECTRICAL SPECIFICATIONS @25°C

- 2.1 OCL : 350 uH Min. @ 100 KHz, 100mV with 8mA DC Bias
- 2.2 Leakage Inductance: 0.5 uH Max. @ 100KHz, 0.2V
- 2.3 Cw/w: 28 pF Max. @ 100KHz, 0.2V
- 2.4 DCR: 1.2Ω Max.
- 2.5 Turns Ratio(±5%): 1CT:1CT(TX), 1CT:1CT(RX)
- 2.6 Polarity: 1-16, 6-11 In-Phase
- 2.7 Insertion Loss: -1.1 dB Max. @ 1-100MHz
- 2.8 Return Loss: -16 dB Min. @ 1-30MHz
 - 12 dB Min. @ 30-60 MHz
 - 10 dB Min. @ 60-80 MHz
- 2.9 Cross Talk: -42 dB Min. @ 1-60 MHz
 - 35 dB Min. @ 60-100 MHz
- 2.10 Common Mode Rejection : -40 dB Min. @ 1-30 MHz
 - 35 dB Min. @ 60 MHz
 - 30 dB Min. @ 80-100 MHz
- 2.11 Isolation HI-POT: 1500Vrms 1mA 1Second

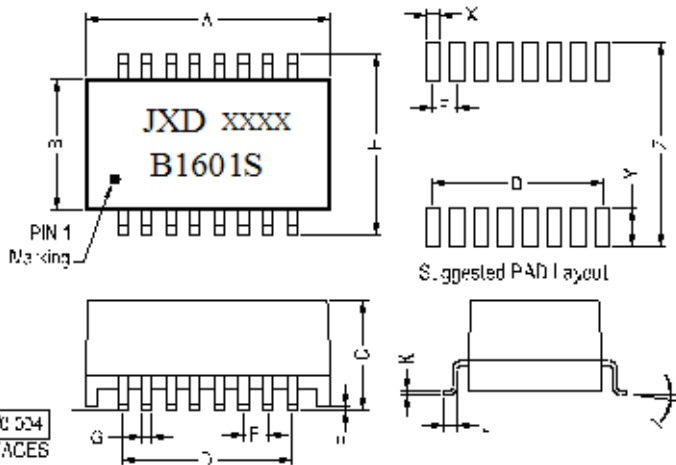
DRAWN BY:	CHECKED BY:	APPROVED BY:	CUSTOMER:
吴红	唐志森	李海辉	PART NO. : B1601S



C. SCHEMATICS:



4. DIMENSIONS & MARKING:



NOTES:

4.1 CASE: BLACK PLASTIC
SELF-EXTINGUISHING PER
UL 94V-0

4.2 LEAD: SOLDERABILITY PER
MIL-STD-202, METHOD 208

0.1N 024
16 SURFACES

DIM	MILLIMETERS		INCHES	
	MIN	MAX	MIN	MAX
A	12.40	12.90	0.488	0.508
B	6.70	7.20	0.264	0.283
C	5.40	5.90	0.187	0.207
D	8.89(Typical)		0.350(Typical)	
E	0.10	0.20	0.004	0.008
F	1.27(Typical)		0.050(Typical)	
G	0.45	0.55	0.018	0.022

DIM	MILLIMETERS		INCHES	
	MIN	MAX	MIN	MAX
H	9.25	9.75	0.350	0.370
I	0°	8°	0°	8°
J	2.55	3.05	0.100	0.120
X	0.71	0.81	0.028	0.032
Y	1.78	2.28	0.070	0.090
Z	10.42	10.92	0.410	0.430
K	0.20	0.30	0.008	0.012

DRAWN BY:	CHECKED BY:	APPROVED BY:	CUSTOMER:
吴红	唐志森	李海辉	PART NO. : B1601S



華馳精密股份有限公司

REV. : A

PAGE: 2 OF 7

SAMPLE TEST DATA

NO	1	2	3	4	5	6	7	8	9	10
SPEC										
TURNS RATIO($\pm 5\%$): 1-3:16-14=1CT:1CT 6-8:11-9=1CT:1CT	OK	OK	OK	OK	OK					
HI-POT: AT 1500Vrms 1mA 1Second 1-3 TO 16-14 6-8 TO 11-9	OK	OK	OK	OK	OK					
DCR:(AT 25°C) 0.9 Ω Max. 1-3 6-8	0.58	0.57	0.49	0.46	0.47					
OCL(AT 100KHz, 0.1V With 8mA DC Bias) 350 uH Min. 1-3 6-8	578	523	535	536	532					
LK:(AT 100KHz, 0.2V) 0.5 uH Max. 1-3(16-14 short) 6-8(11-9 short)	0.31	0.29	0.28	0.32	0.29					
Cw/w:(AT 100KHz, 0.2V) 28 pF Max. 2 TO 15 7 TO 10	19	18	16	18	16					

MAIN TEST EQUIPMENT

- TOPWARD TPT-500 WITHSTANDING VOLTAGE TESTER
- HEWLETT PACKARD 4277A LCZ METER
- CHEN HWA 3250 AUTOMATIC TRANSFORMER TEST SYSTEM
- CHEN HWA 502A LOW-OHM METER
- RF NETWORK ANALYZERS HP8712ET

REPORT BY:	CHECKED BY:	APPROVED BY:	CUSTOMER:
吴红	唐志森	李海辉	PART NO. : B1601S



華馳精密股份有限公司

REV. : A

PAGE: 3 OF 7

SAMPLE TEST DATA

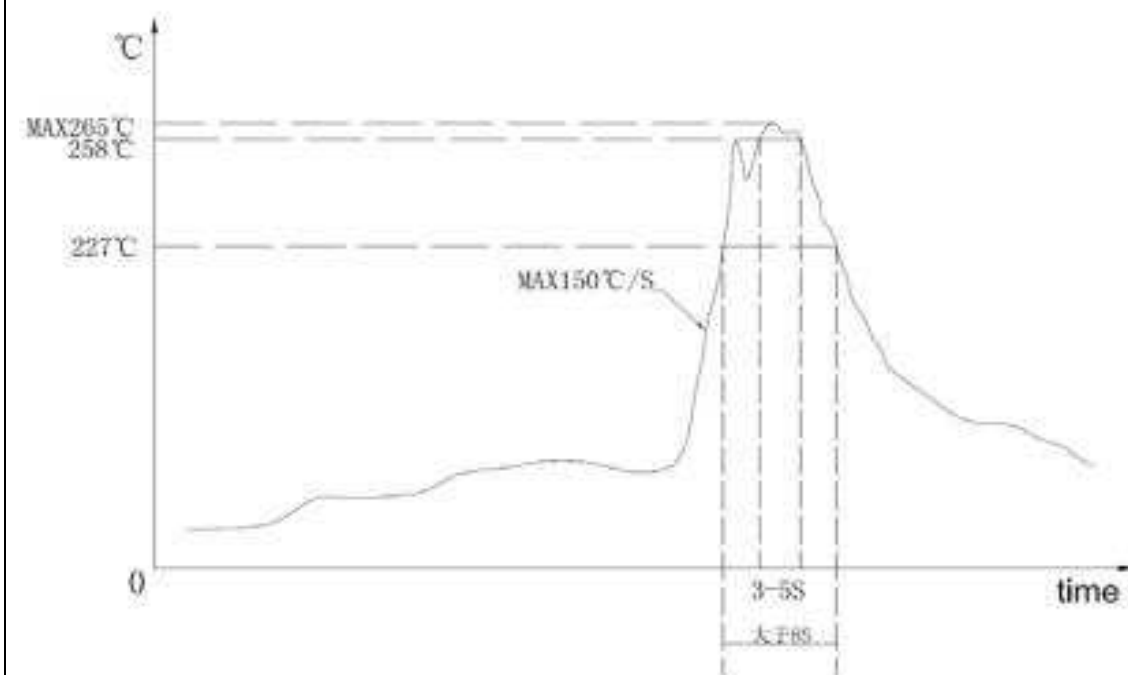
SPEC \ NO	1	2	3	4	5	6	7	8	9	10
Insertion Loss:										
-1.0 dB Max. @ 1-100MHz										
TX1(1-3):										
30MHz	-0.24	-0.24	-0.26	-0.33	-0.25					
40MHz	-0.30	-0.31	-0.31	-0.35	-0.31					
50MHz	-0.41	-0.38	-0.42	-0.39	-0.38					
60MHz	-0.51	-0.52	-0.53	-0.42	-0.41					
80MHz	-0.49	-0.51	-0.46	-0.55	-0.46					
100MHz	-0.53	-0.57	-0.60	-0.53	-0.53					
TX2(6-8):										
30MHz	-0.25	-0.26	-0.25	-0.24	-0.29					
40MHz	-0.36	-0.33	-0.31	-0.31	-0.29					
50MHz	-0.38	-0.39	-0.38	-0.42	-0.33					
60MHz	-0.46	-0.42	-0.41	-0.42	-0.42					
80MHz	-0.52	-0.51	-0.46	-0.51	-0.51					
Return Loss:										
-16 dB Min. @ 1-30MHz										
-12 dB Min. @ 30-60 MHz										
-10 dB Min. @ 60-80 MHz										
TX1(1-3):										
30MHz	-25.9	-24.2	-26.3	-25.6	-26.6					
40MHz	-23.1	-24.1	-22.2	-23.3	-24.3					
50MHz	-21.2	-23.2	-21.0	-23.0	-20.9					
60MHz	-18.5	-22.1	-18.5	-21.2	-19.6					
80MHz	-18.2	-20.3	-17.9	-18.8	-16.8					
100MHz	-15.6	-15.8	-15.9	-15.8	-14.9					
TX2(6-8):										
30MHz	-26.1	-24.1	-25.6	-26.3	-25.3					
40MHz	-22.3	-22.4	-22.5	-21.6	-24.3					
50MHz	-20.5	-18.9	-21.1	-21.2	-21.0					

MAIN TEST EQUIPMENT

- TOPWARD TPT-500 WITHSTANDING VOLTAGE TESTER
- HEWLETT PACKARD 4277A LCZ METER
- CHEN HWA 3250 AUTOMATIC TRANSFORMER TEST SYSTEM
- CHEN HWA 502A LOW-OHM METER
- RF NETWORK ANALYZERS HP8712ET

REPORT BY:	CHECKED BY:	APPROVED BY:	CUSTOMER:
吴红	唐志森	李海辉	PART NO. : B1601S

6、无铅焊接温度曲线图

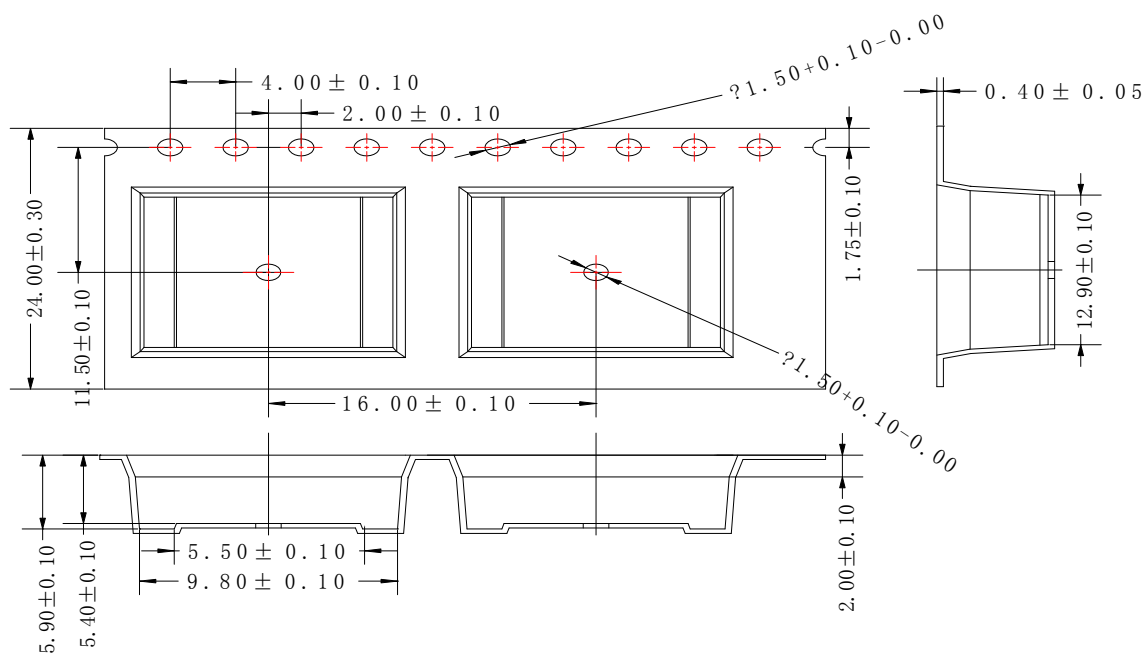
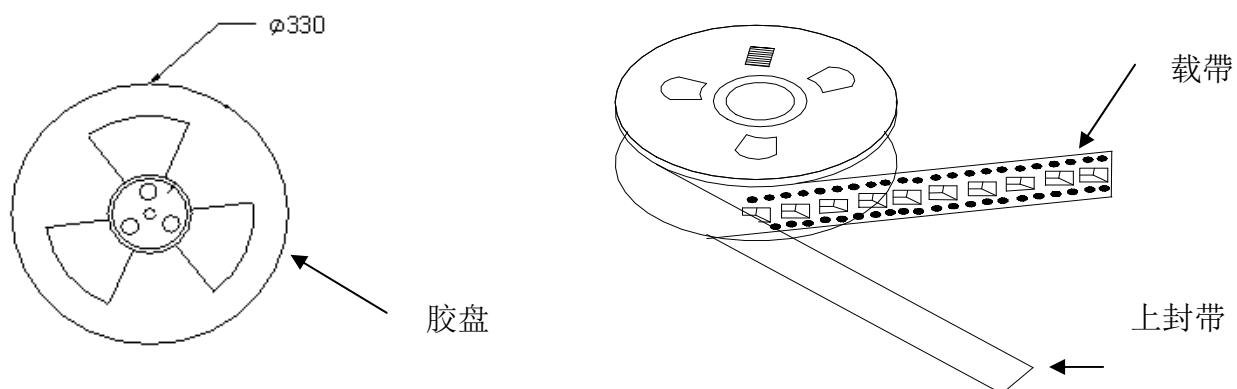


物料要求:

- 1、焊接最高温度为 265°C，物料最大承受温度应满足在 265°C 5S 的焊接时间；
- 2、元件引脚能承受 150°C/S 的热冲击,且能循环 2 次以上。
- 3、贴片元器件的本体塑封（塑胶部分）必须在 60-90 秒内耐 120°C 高温。
- 4、能保证在 227°C-265°C 承受 8S 连续焊接时间，258°C-265°C 5S 的焊接时间。
- 5、贴装物料手工焊接保证在温度设置 390°C 时，8 秒的焊接时间。

REPORT BY:	CHECKED BY:	APPROVED BY:	CUSTOMER:
吴红	唐志森	李海辉	PART NO. : B1601S
 華馳精密股份有限公司			REV. : A
			PAGE: 6 OF 7

7、包装说明:



卷带包装方式说明:

1. 单卷包装600PCS产品,包装方式为前空25PCS格,后空10PCS格(靠近卷轴端为前);
2. 将10卷产品放入包装箱里 $600 \times 10 = 6000$ PCS.

REPORT BY:

CHECKED BY:

APPROVED BY:

CUSTOMER:

吴红

唐志森

李海辉

PART NO. : B1601S



華馳精密股份有限公司

REV. : A

PAGE: 7 OF 7