

ArduiBox Feather

Rev A

construction manual

Rev.	Date	Description
A	2023-10-10	First Release

Tools:

*a regulated soldering iron
(25..40W) with small tip*



*a wet sponge to clean the
tip*



thin solder wire



Side cutting pliers



Needle nose pliers



Medium cross slot screwdriver



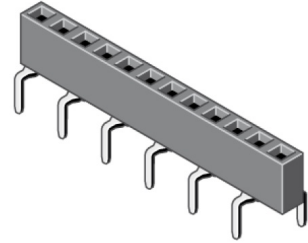
Parts:



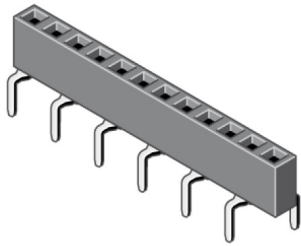
1x
2pole terminal block



2x
3pole terminal block



1x
12pole centipede header



1x
16pole centipede header



1x
12pole female header



1x
16pole female header



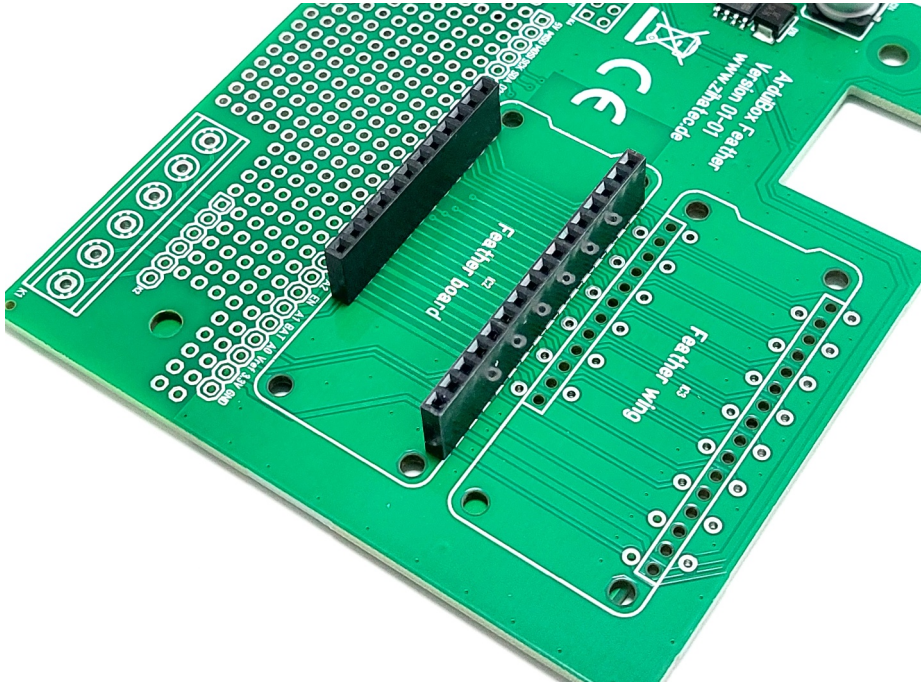
1x
2x5pole female header



2x
self-tapping screws

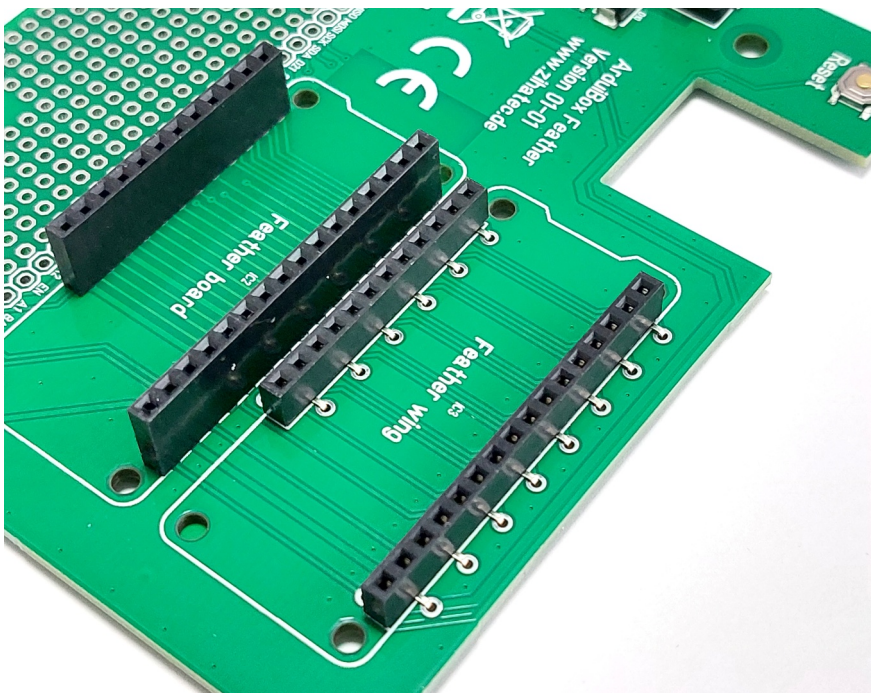
1.) *Place and solder the female headers*

Please assemble and solder the both female headers as in the picture below:



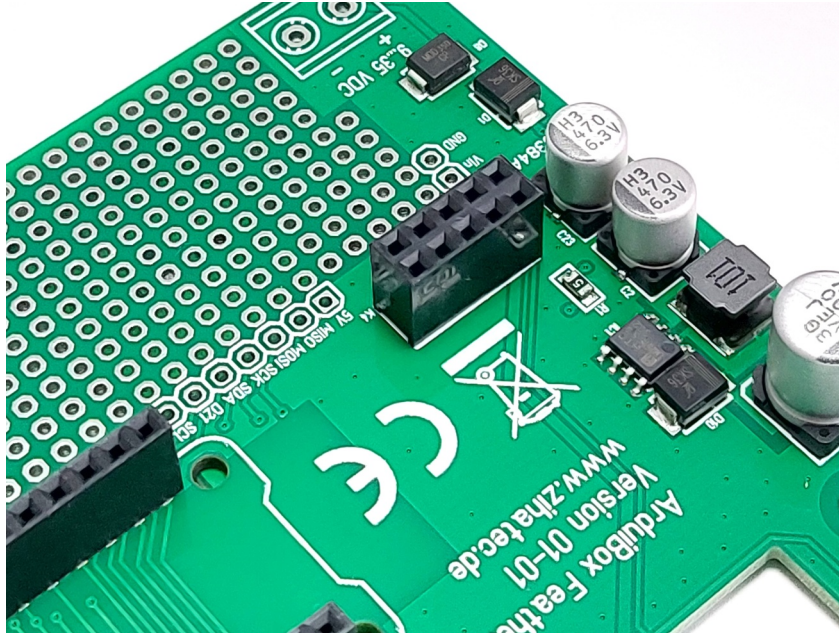
2.) *Place and solder the centipede headers*

Please assemble and solder the 2 centipede headers as in the picture below:



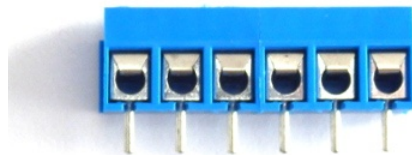
3.) *Place and solder female header K4*

Please assemble and solder the 2x5 female header as in the picture below:



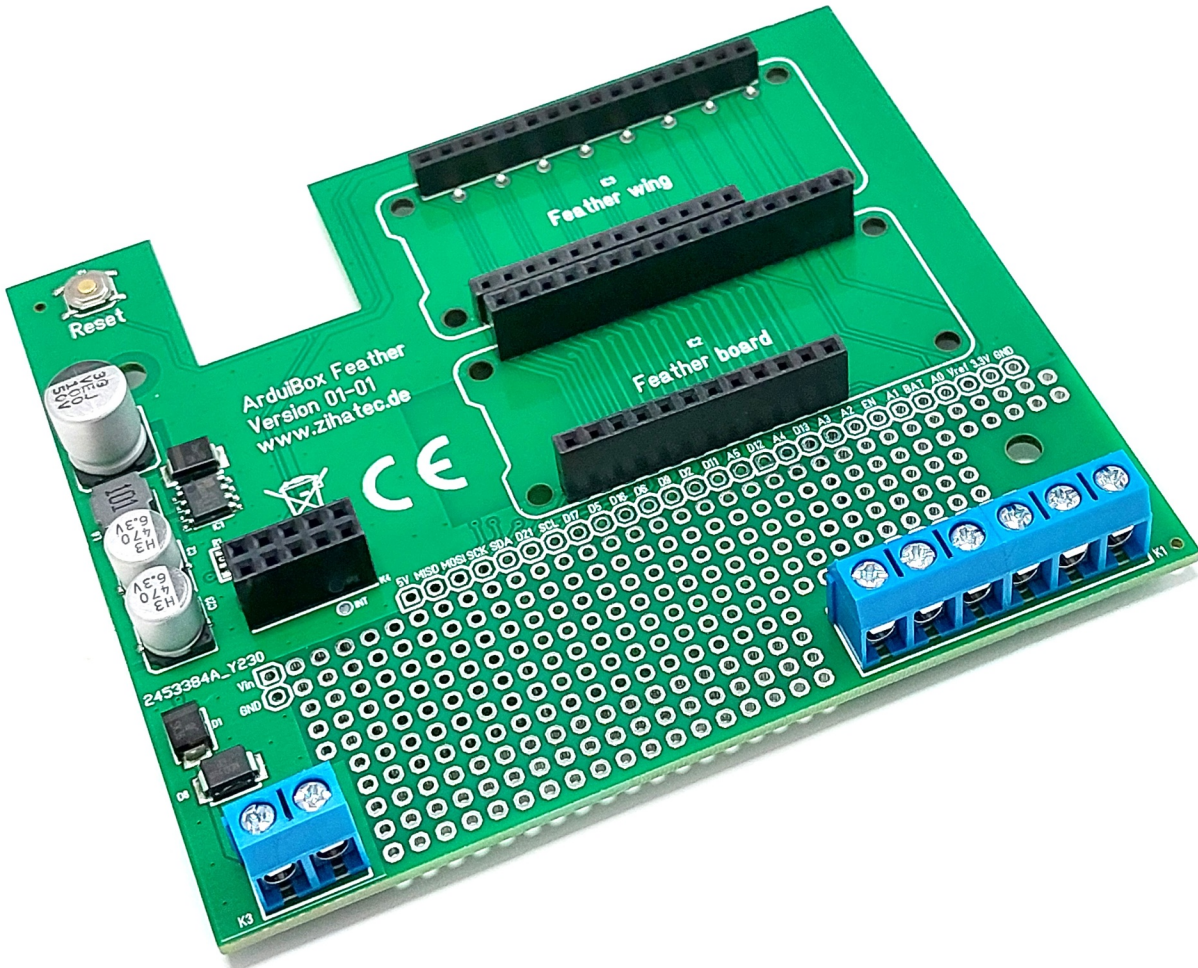
4.) *Preparing of 3pole terminal blocks*

Find the terminal blocks, they're grey or blue and come in 3-pin shape. We'll need to slide two 3-pin blocks together:

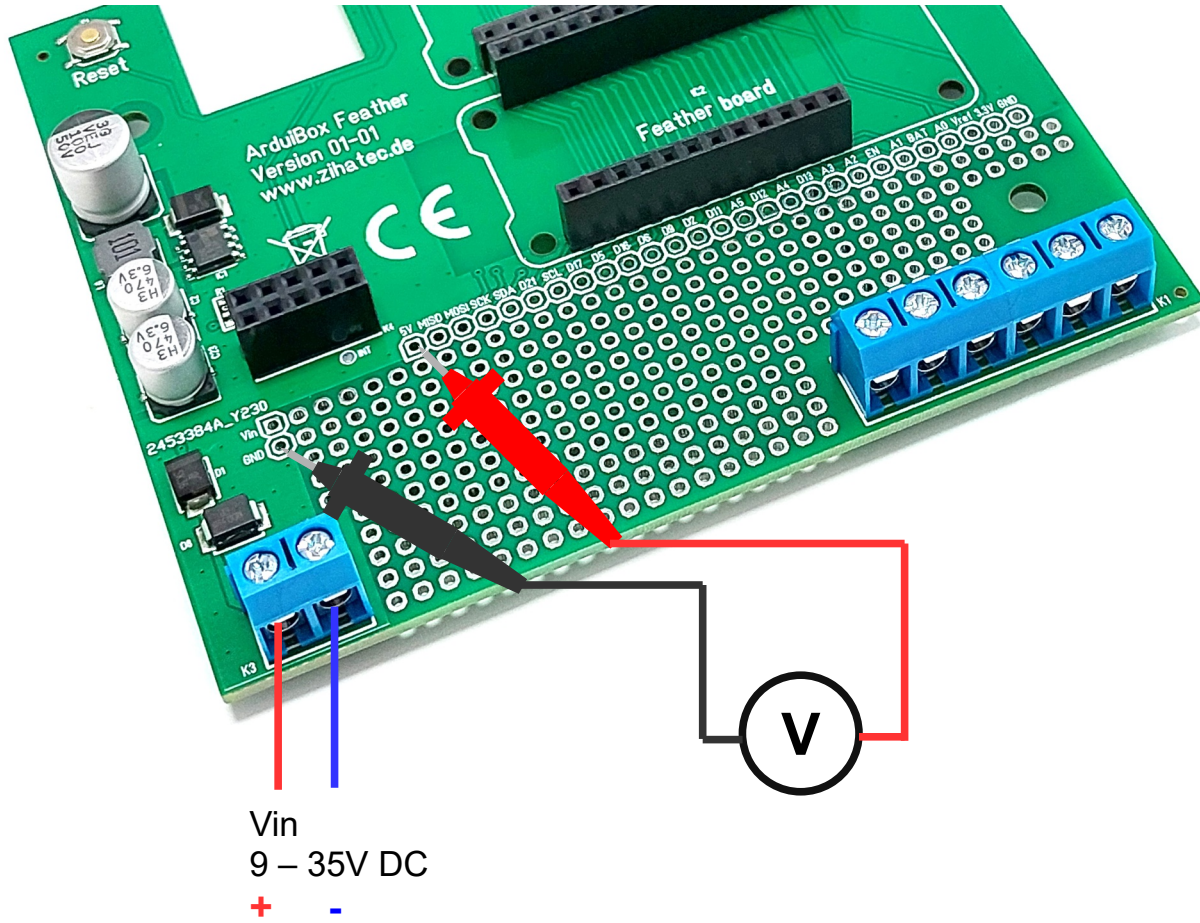


5.) Place and solder the terminal blocks

We've to put the blocks into the proto plate. Make sure you place them so that the open ends are facing out as shown:

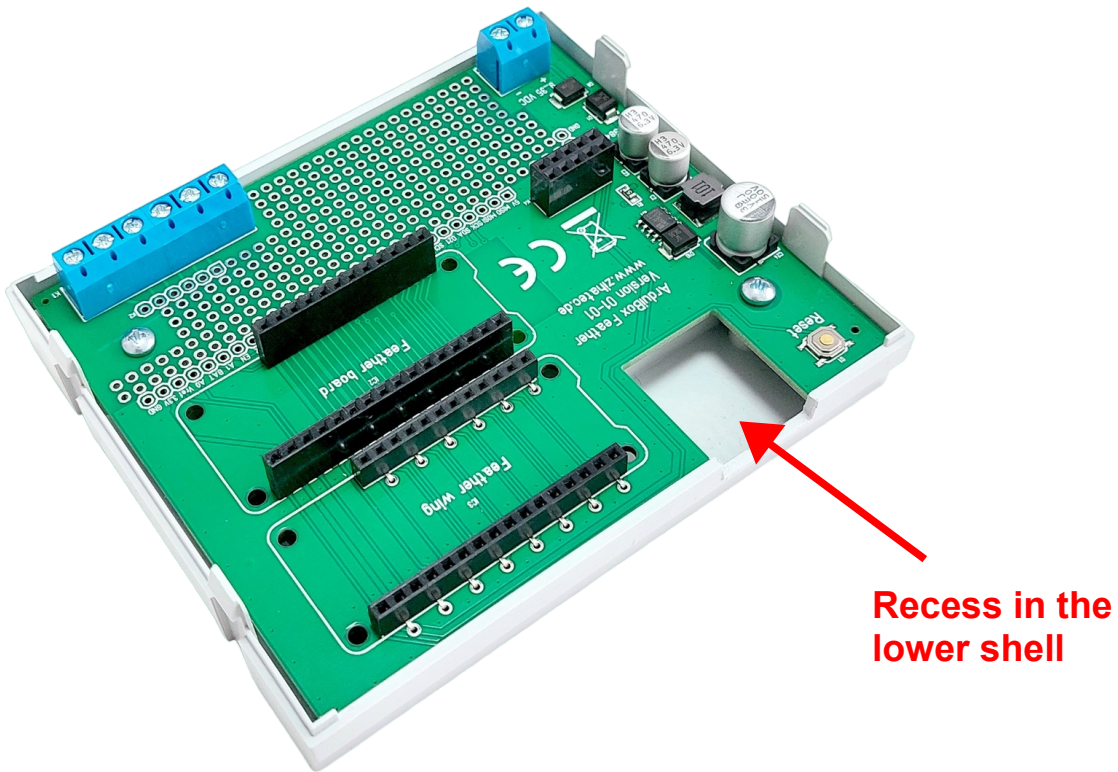


6.) Test the voltage regulator

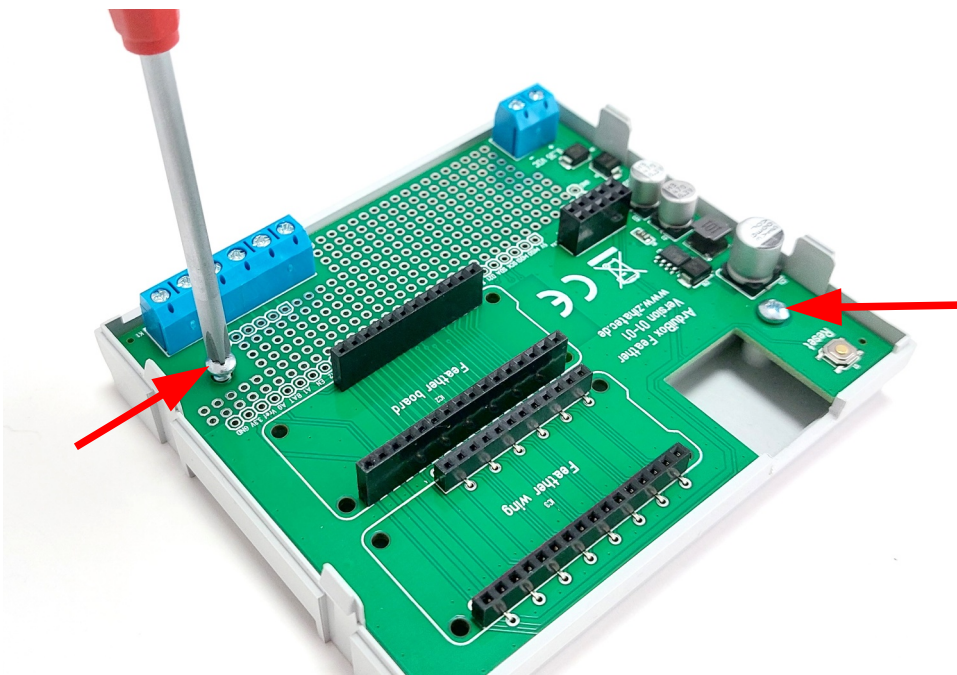


You have to measure a voltage between 4.9 – 5.1V between GND and 5V pad!

7.) Mount the pcb into the bottom shell

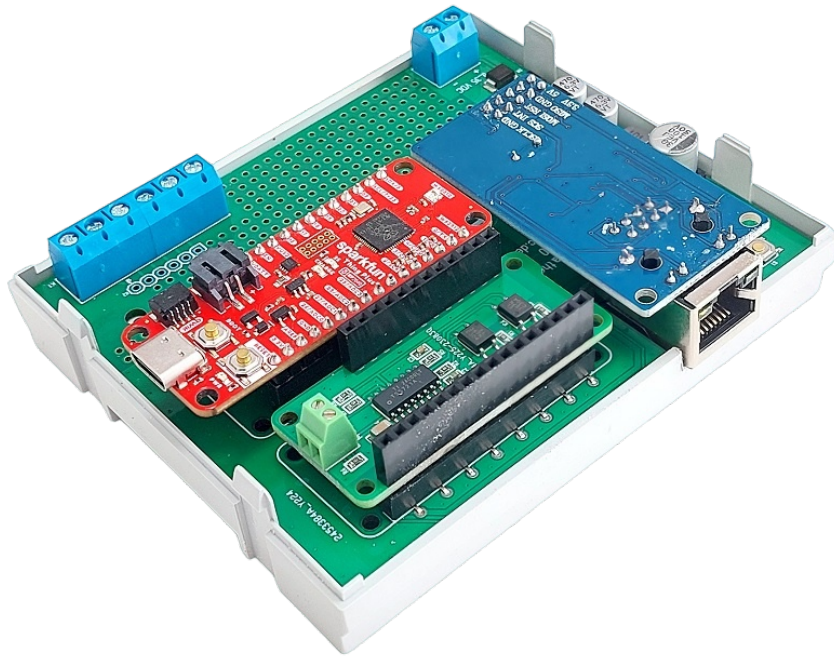


8.) Fix the pcb in the lower shell with the screws



9.) Mount the Feather boards

It's time to mount the Feather board and optional wing and/or Ethernet module:



10.) Mount the top shell



Finish!