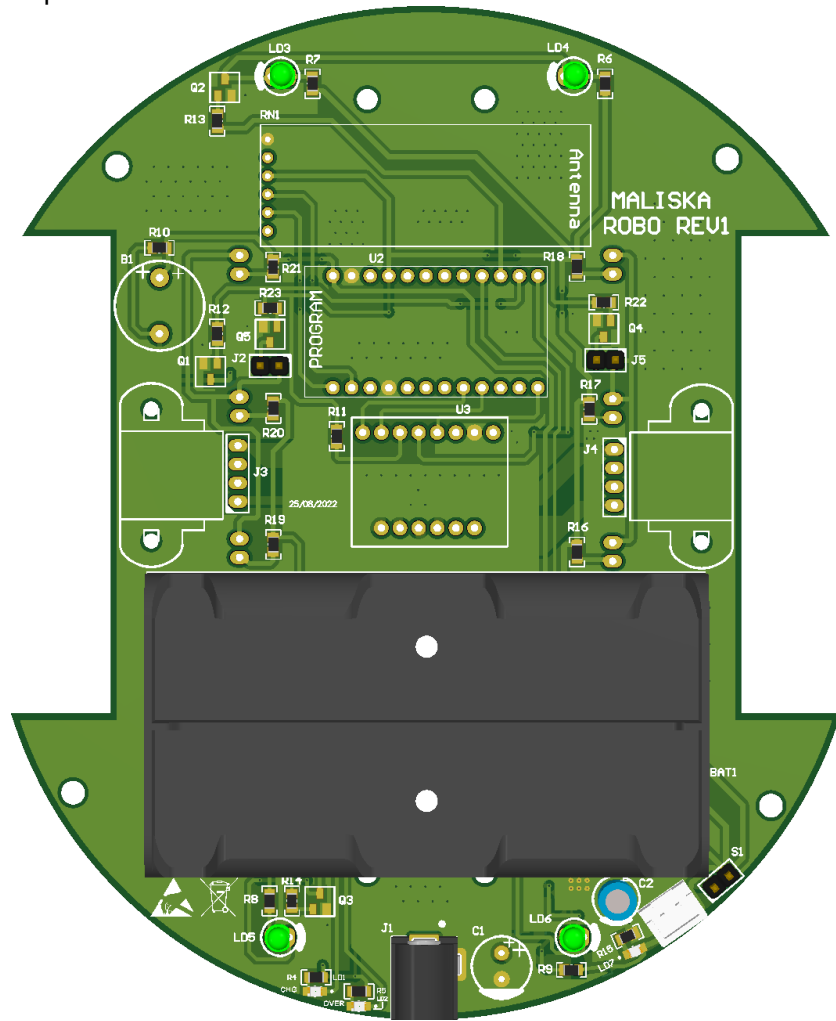
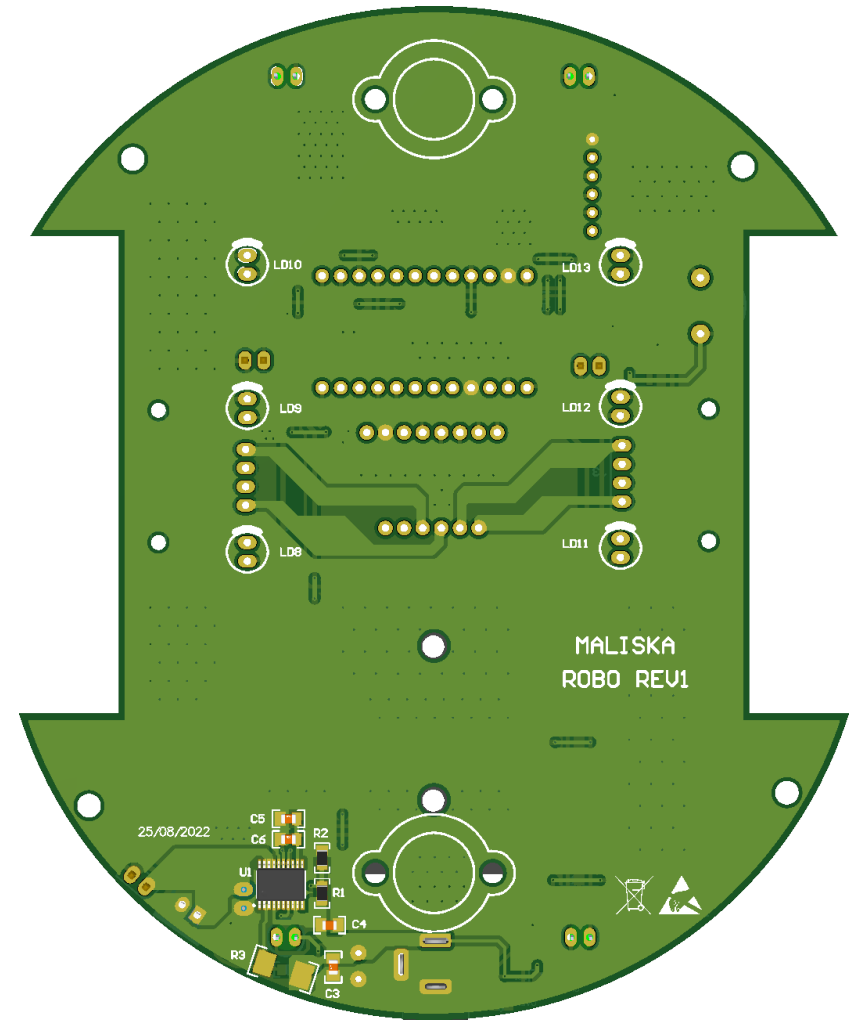


# Robo Main PCB - Hardware Documentation

Top View



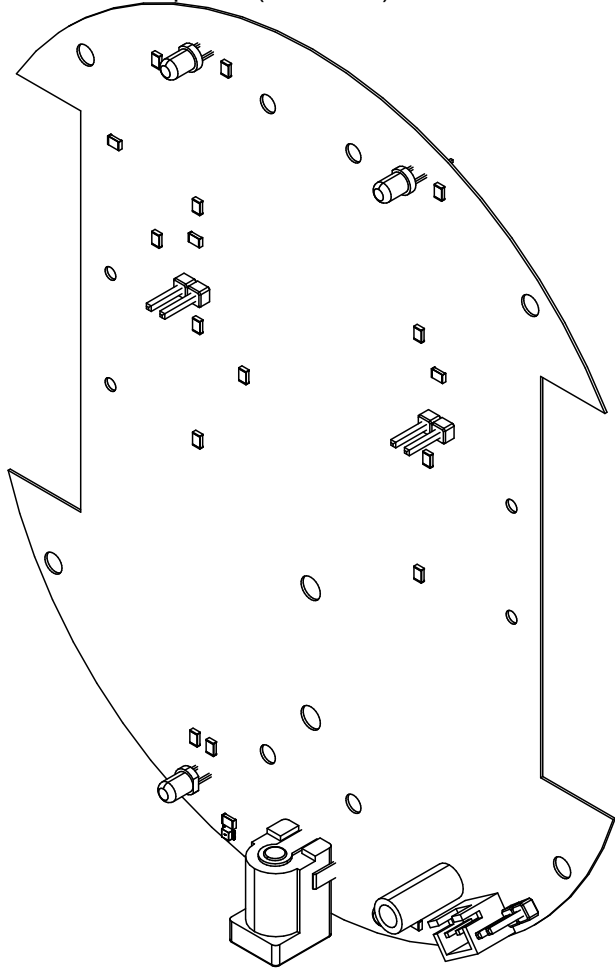
Bottom View



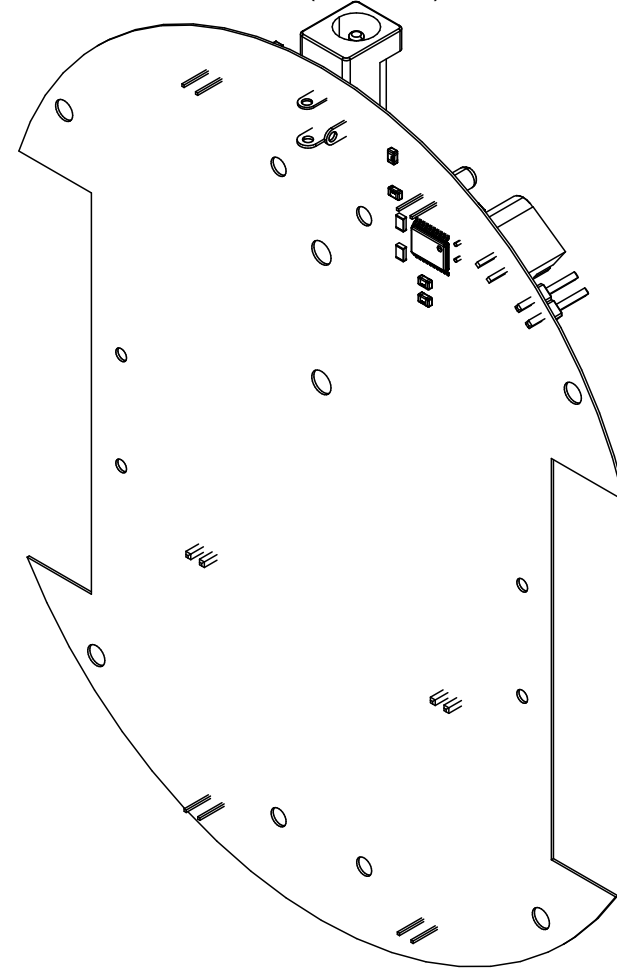
Width = 113.1 mm, Height = 138.1 mm, Thickness = 1.6mm

# Robo Main PCB - ISO View

View from Top side (Scale 1:1)

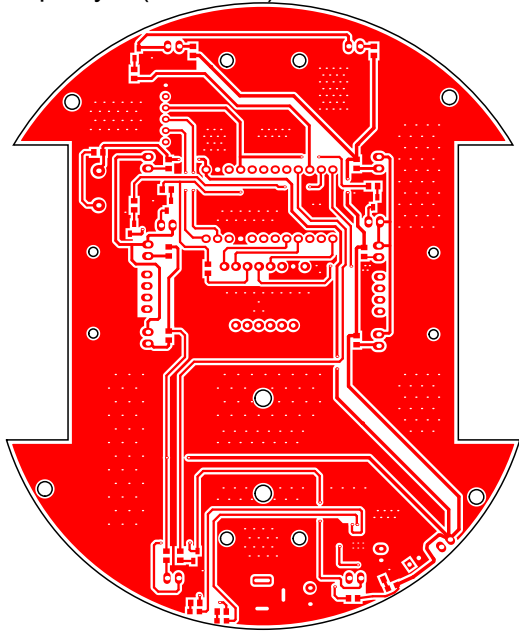


View from Bottom side (Scale 1:1)

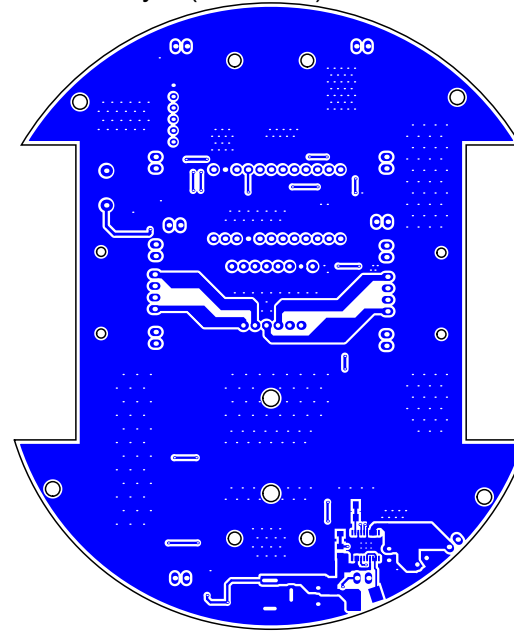


# Robo Main PCB - Layers

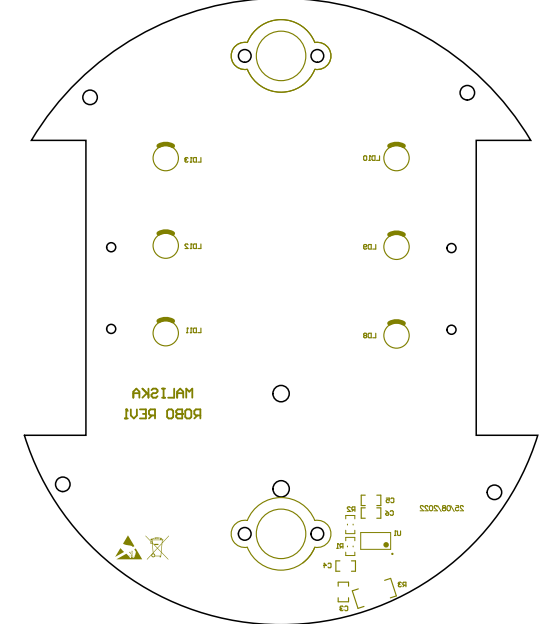
Top Layer (Scale 0.6)



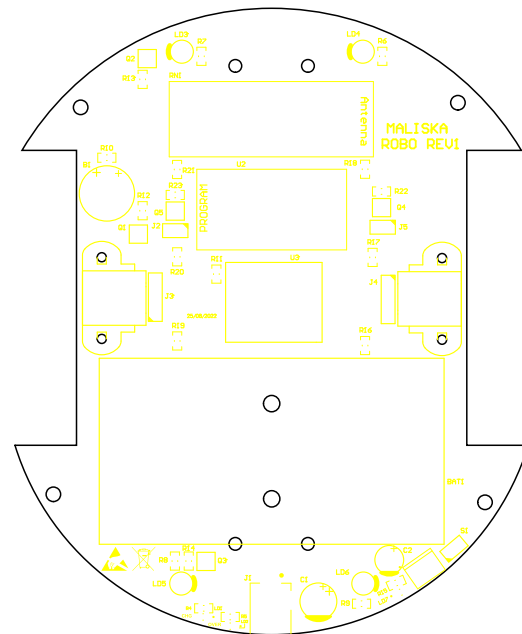
Bottom Layer (Scale 0.6)



Bottom Overlay (Scale 0.6)

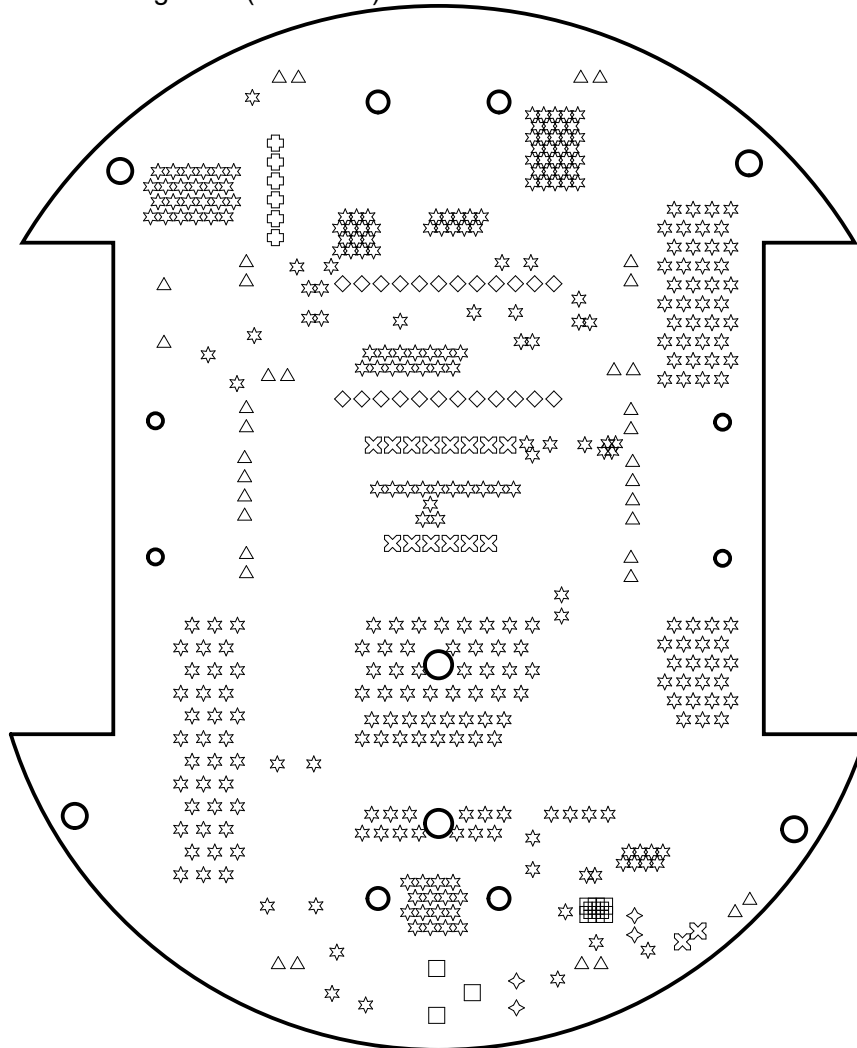


Top Overlay (Scale 0.6)



# Robo Main PCB - Drills

Drill Drawing View (Scale 1:1)

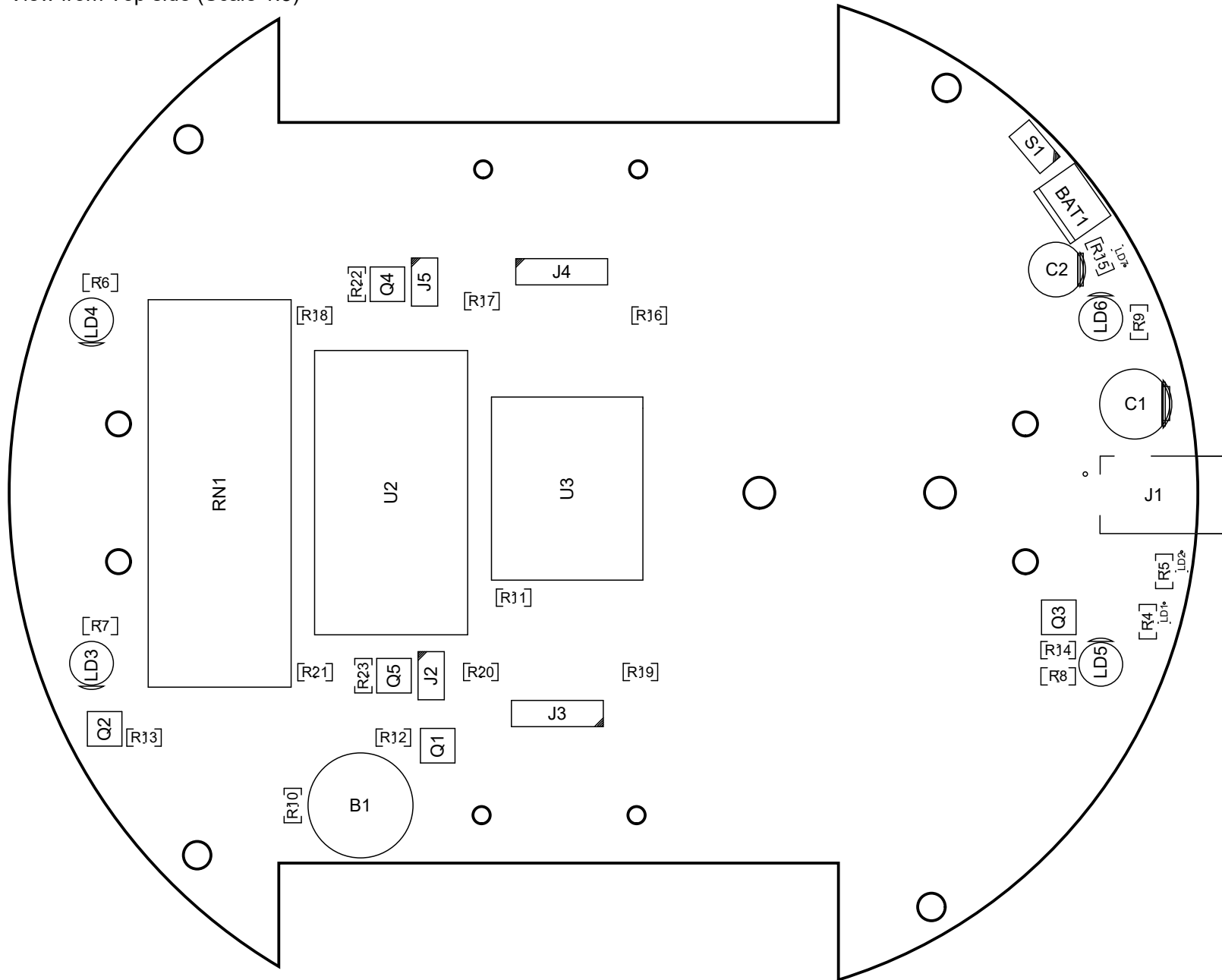


Drill Table

Symbol	Count	Hole Size	Plated	Hole Tolerance
□	6	0.20mm	Plated	
☆	338	0.30mm	Plated	
⊕	6	0.76mm	Plated	
□	3	0.80mm	Plated	
◇	4	0.81mm	Plated	
△	36	0.99mm	Plated	
⊗	16	1.00mm	Plated	
◇	24	1.02mm	Plated	
433 Total				

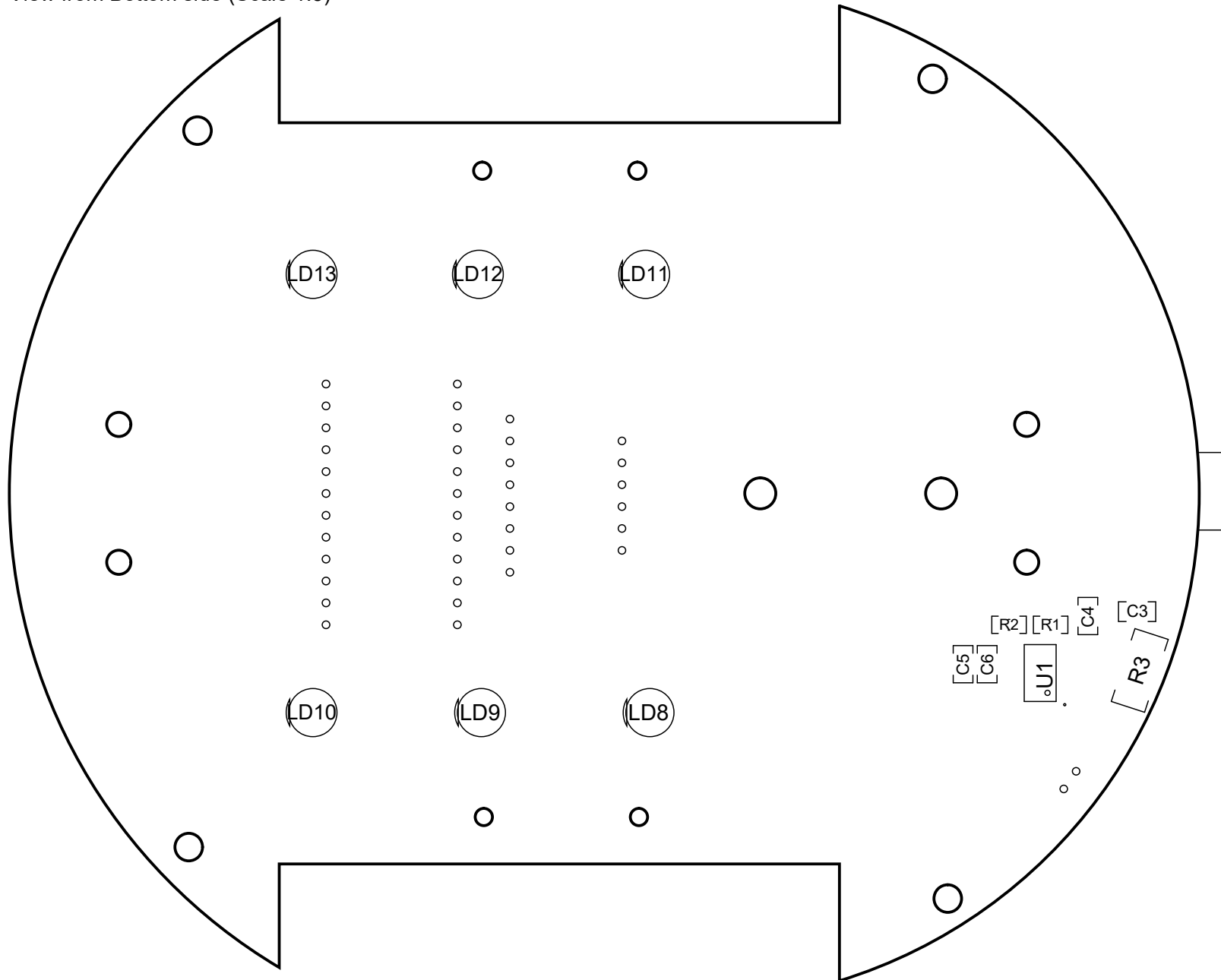
# Robo Main PCB - Assembly Top

View from Top side (Scale 1.5)



# Robo Main PCB - Assembly Bottom

View from Bottom side (Scale 1.5)



# Robo Main PCB - BOM

## Bill Of Materials

Line #	Designator	Comment	Quantity
1	B1	12V BUZZER	1
2	BAT1, J3, J4	2PIN PAD	3
3	C1	100uF	1
4	C2	10uF	1
5	C3, C4, C5, C6	0.1uF	4
6	J1	KLDX-0202-A	1
7	J2, J5	2PIN Molex	2
8	LD1	3MM RED	1
9	LD2, LD7	3MM GRN	2
10	LD3, LD4, LD8, LD9, LD10, LD11, LD12, LD13	5MM WHITE	8
11	LD5, LD6	5MM RED	2
12	Q1, Q2, Q3, Q4, Q5	BC547	5
13	R1, R10, R11	10k	3
14	R2	1.2k	1
15	R3	0.2E	1
16	R4, R5, R12, R13, R14, R22, R23	470E	7
17	R6, R7, R8, R9, R16, R17, R18, R19, R20, R21	560	10
18	R15	330E	1
19	RN1	RN42-I/RM SILVER	1
20	S1	SW-SPST	1
21	U1	BQ24005PWP	1
22	U2	Arduino Pro Mini	1
23	U3	DRV8833 Adafruit Module	1