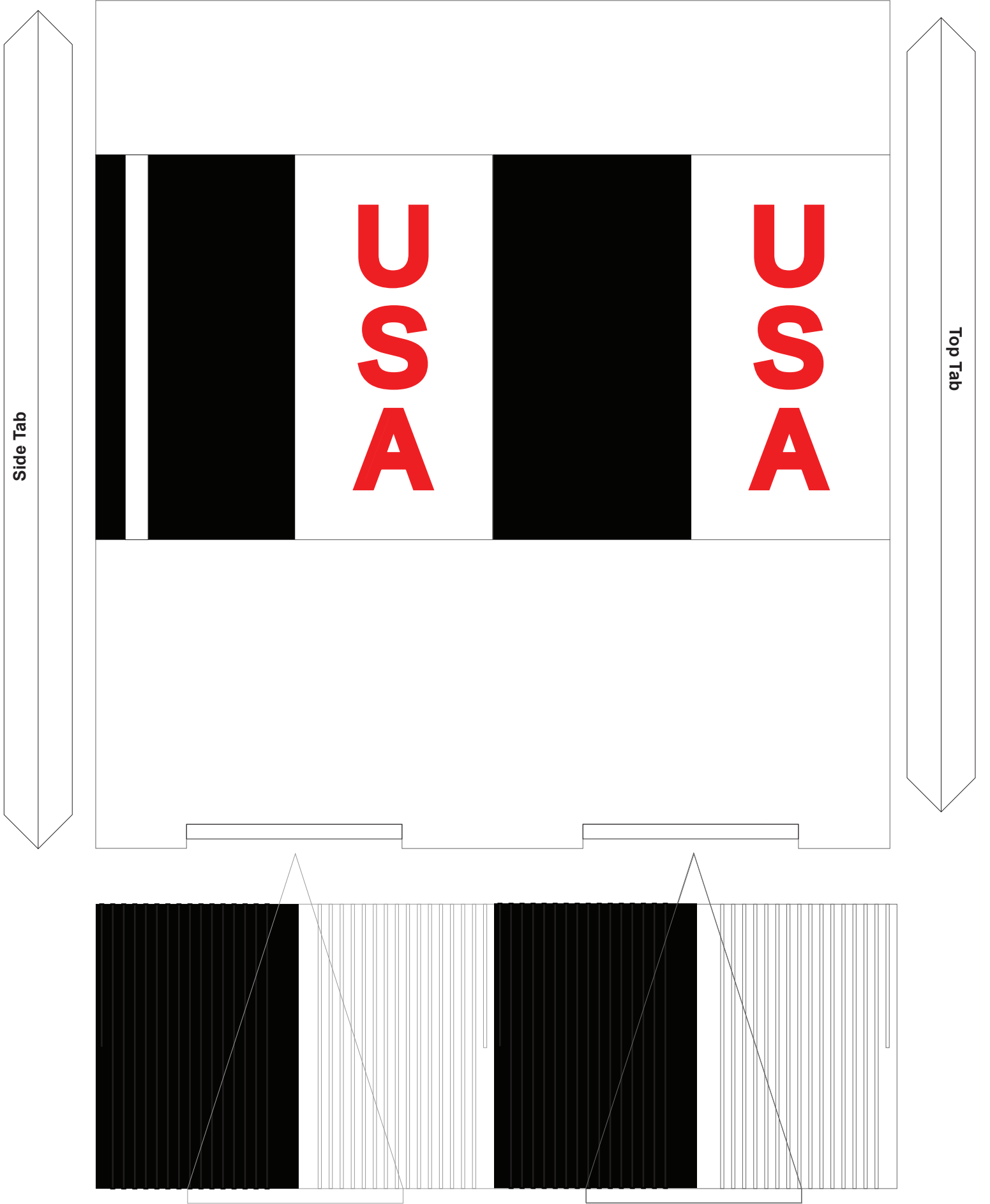


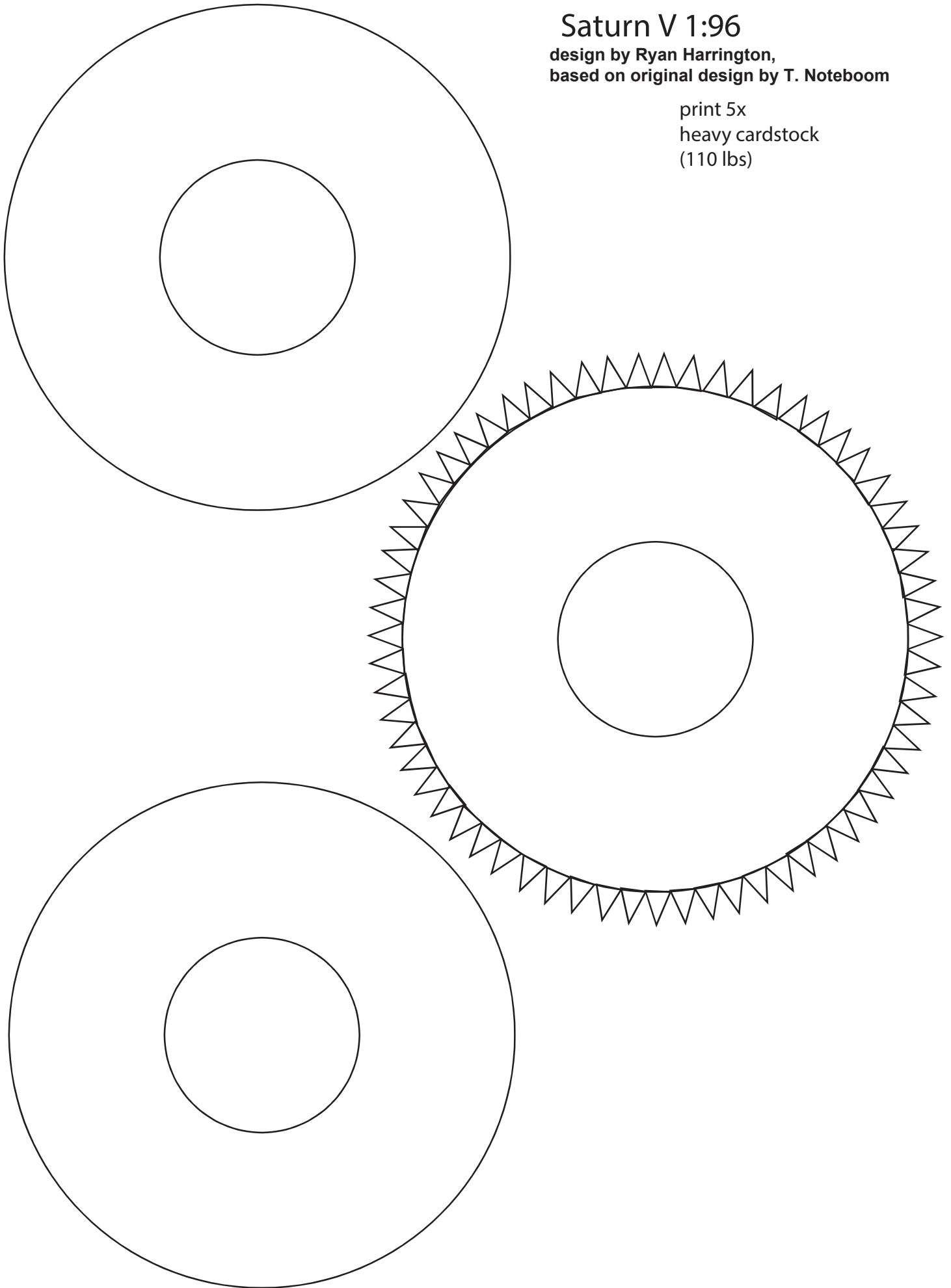
NOT FOR COMMERCIAL USE

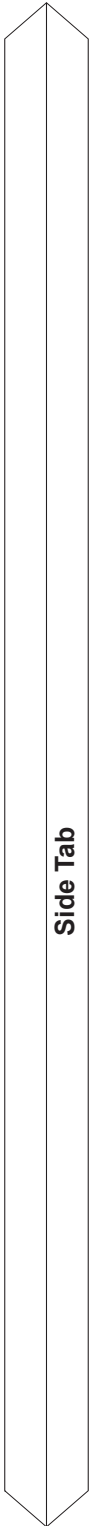
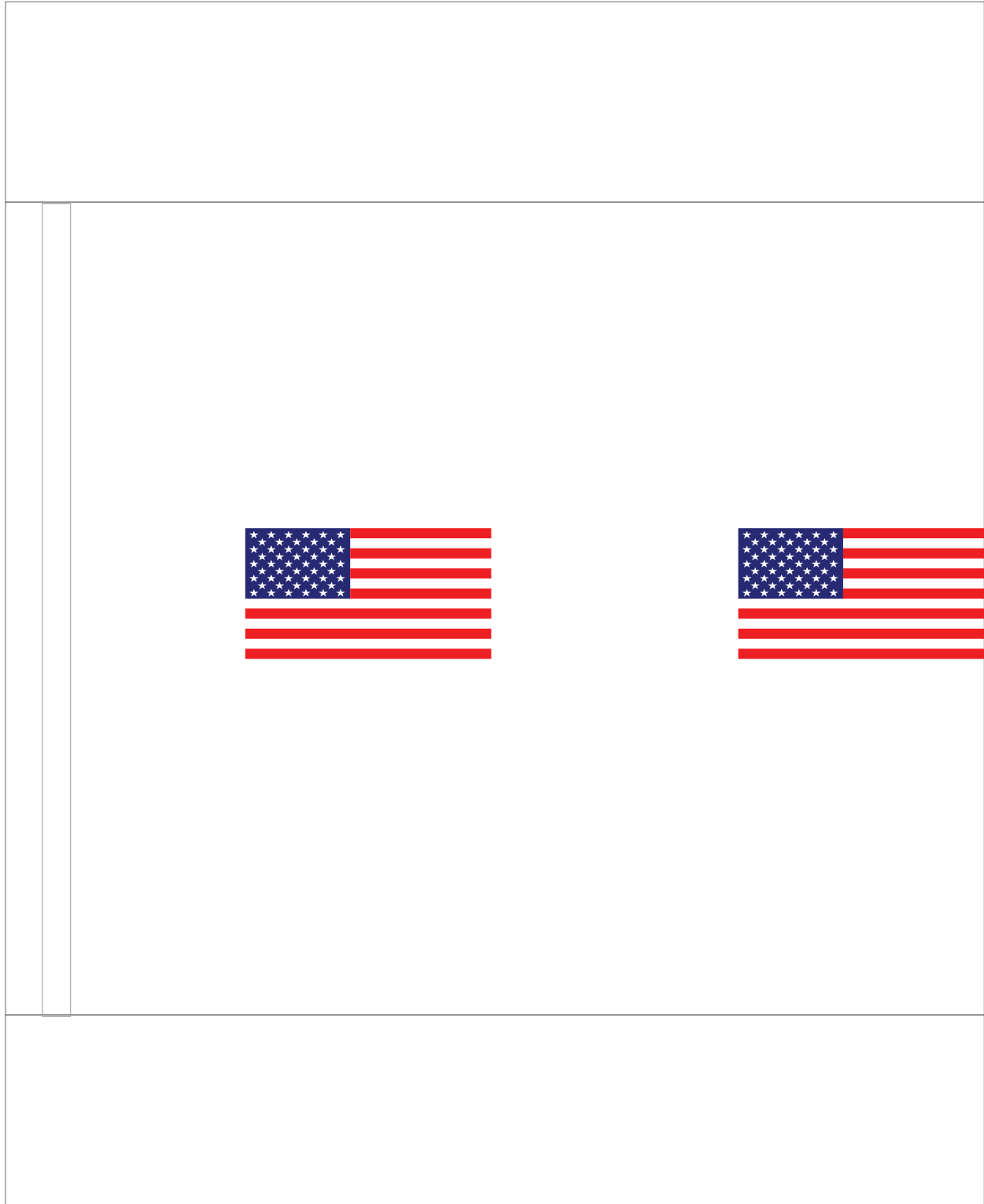
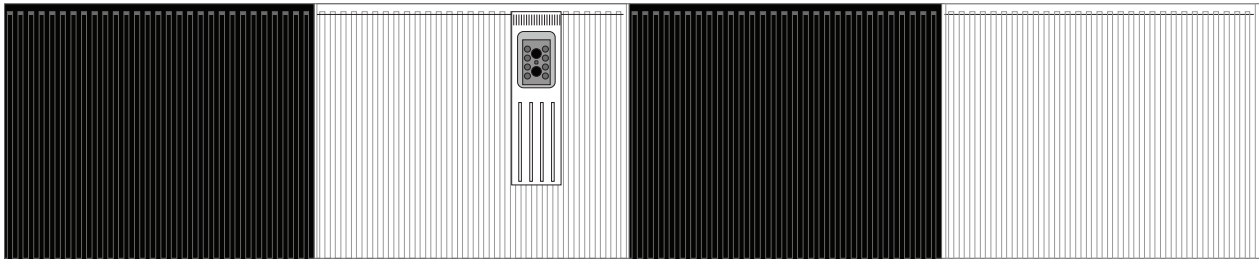


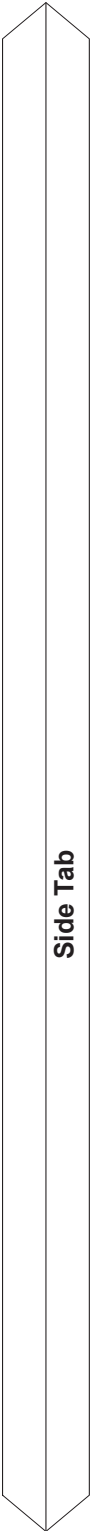
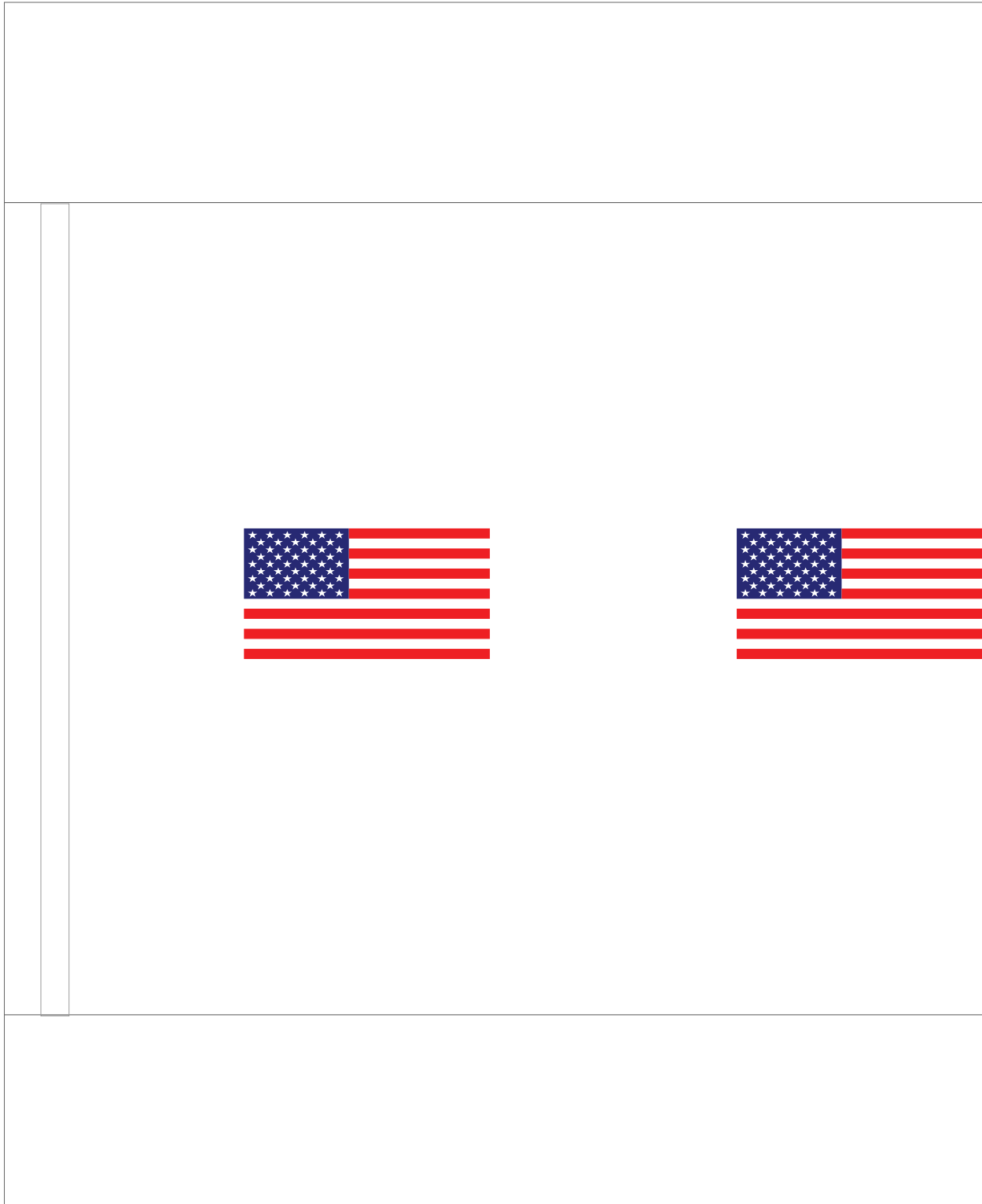
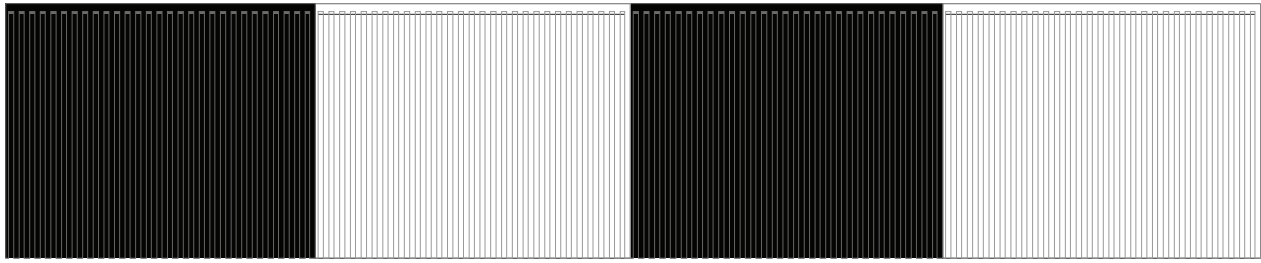
# Saturn V 1:96

design by Ryan Harrington,  
based on original design by T. Noteboom

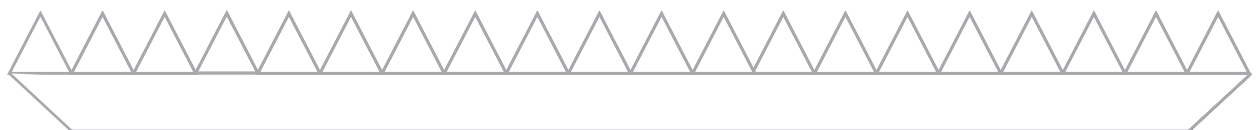
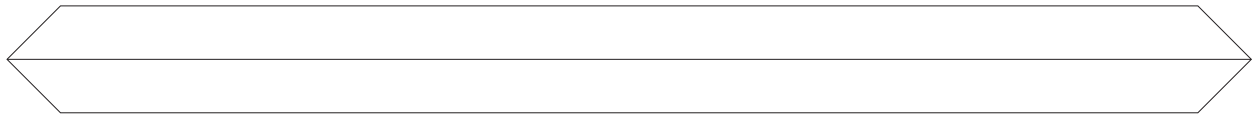
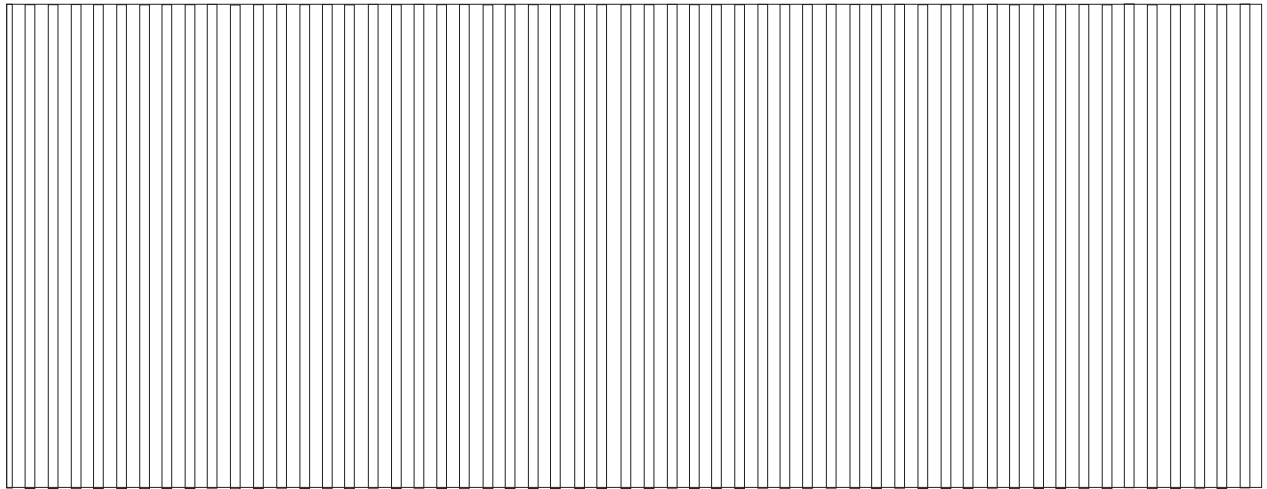
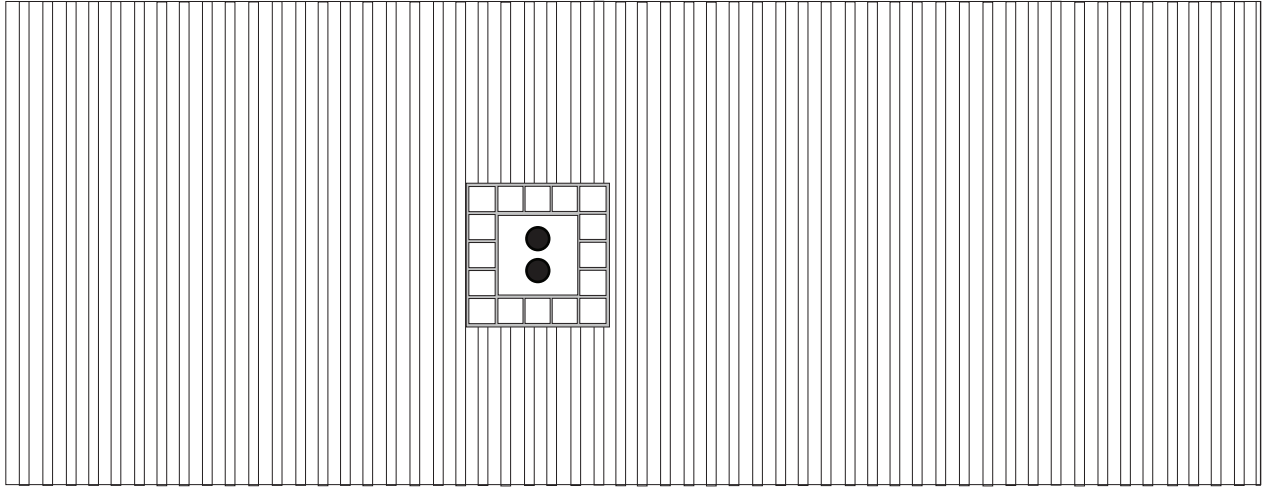
print 5x  
heavy cardstock  
(110 lbs)



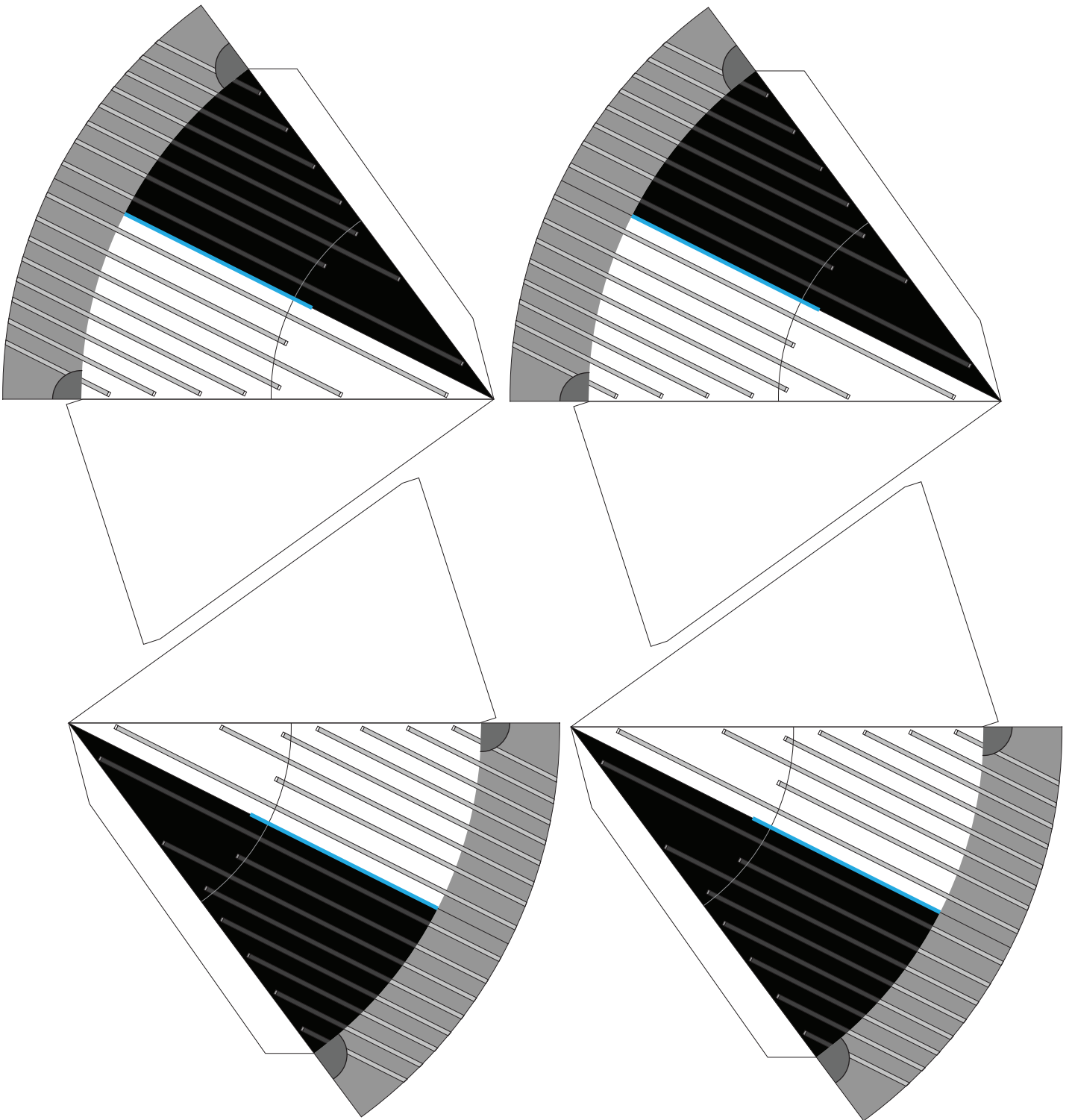




Side Tab

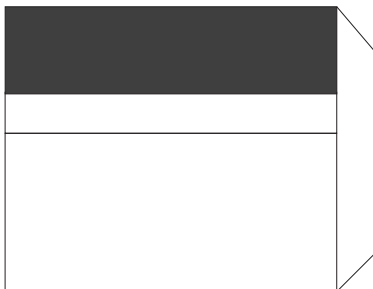
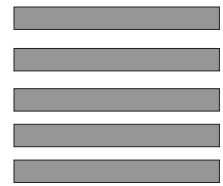
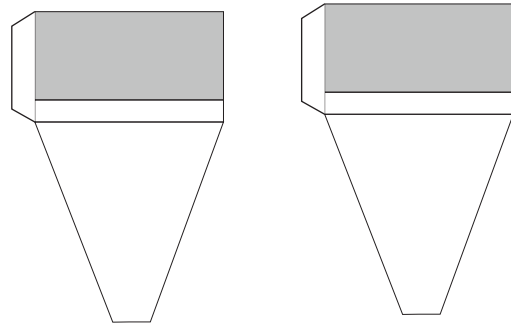
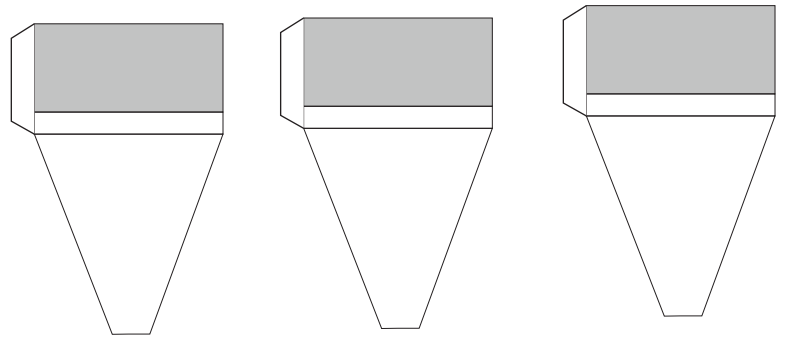


F1 engine covers print on heavy cardstock

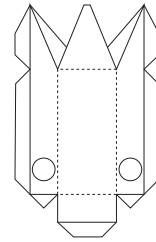
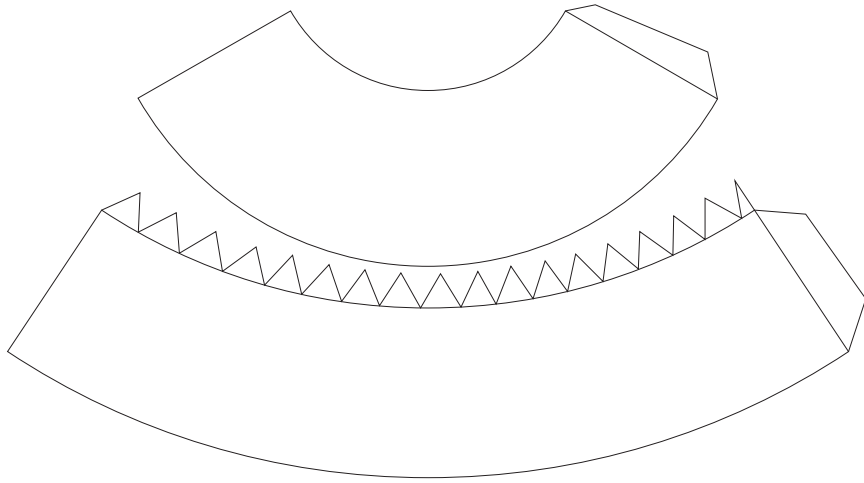
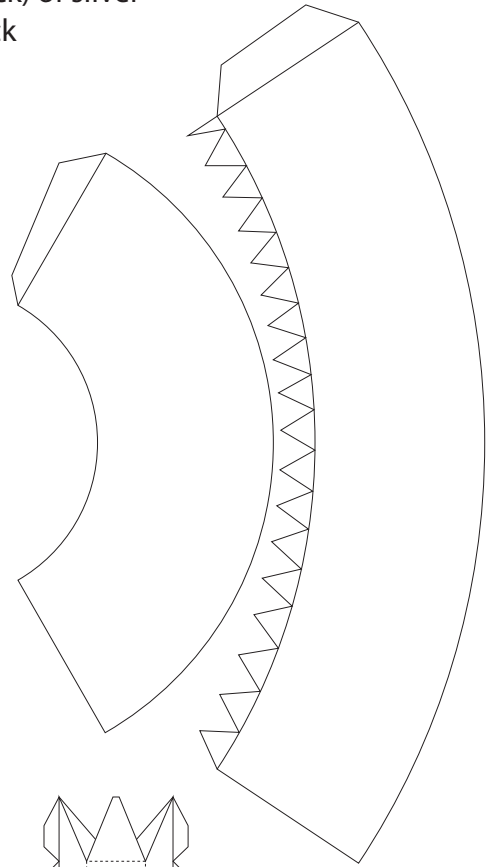
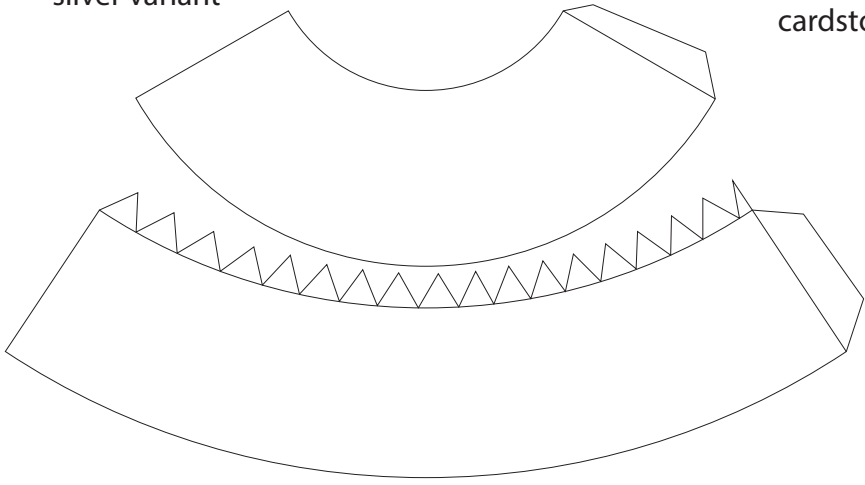


print on the white  
side (back) of silver  
cardstock

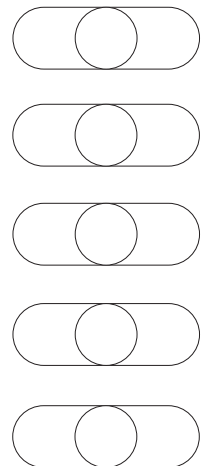
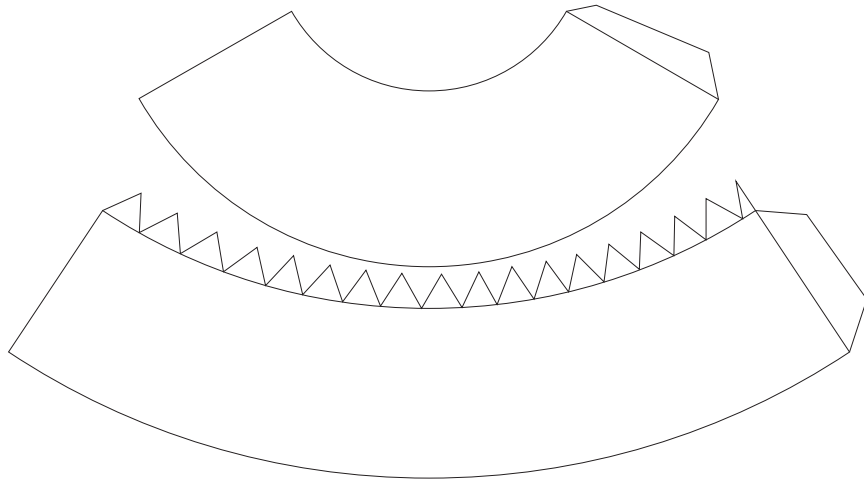
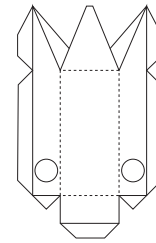
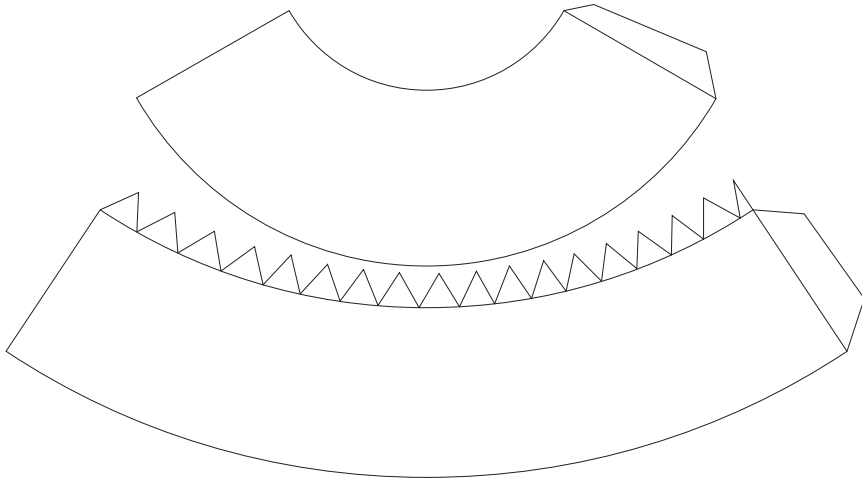
These parts are for the F1  
engines, silver variant



These parts are the exhaust nozzles of the F1 engines, print this page on the white side (back) of silver cardstock



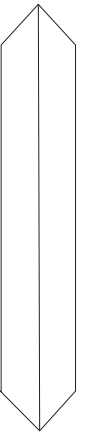
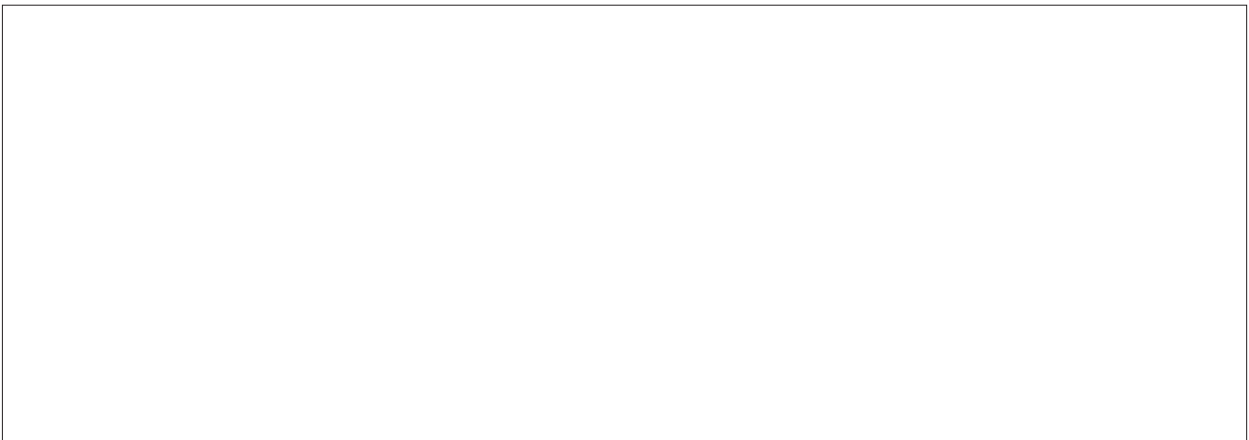
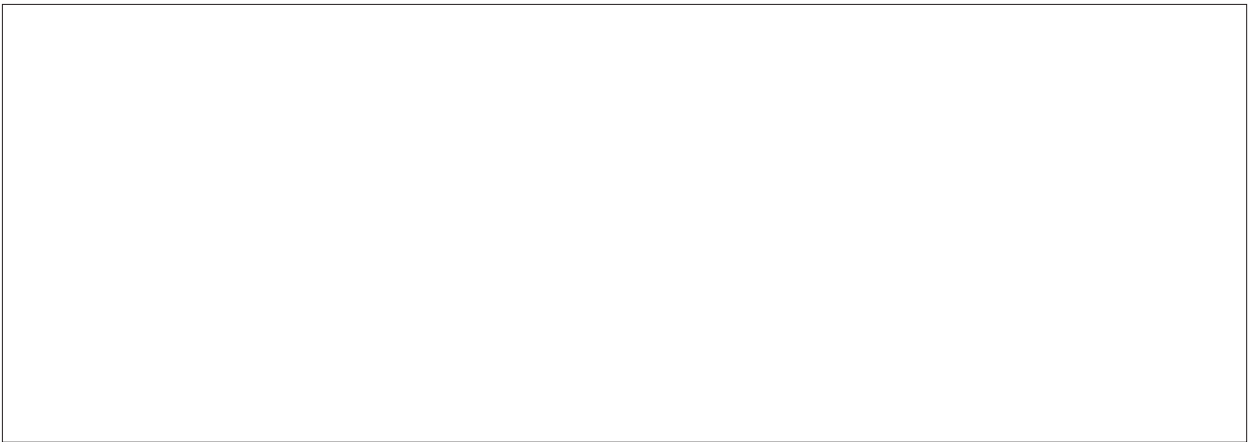
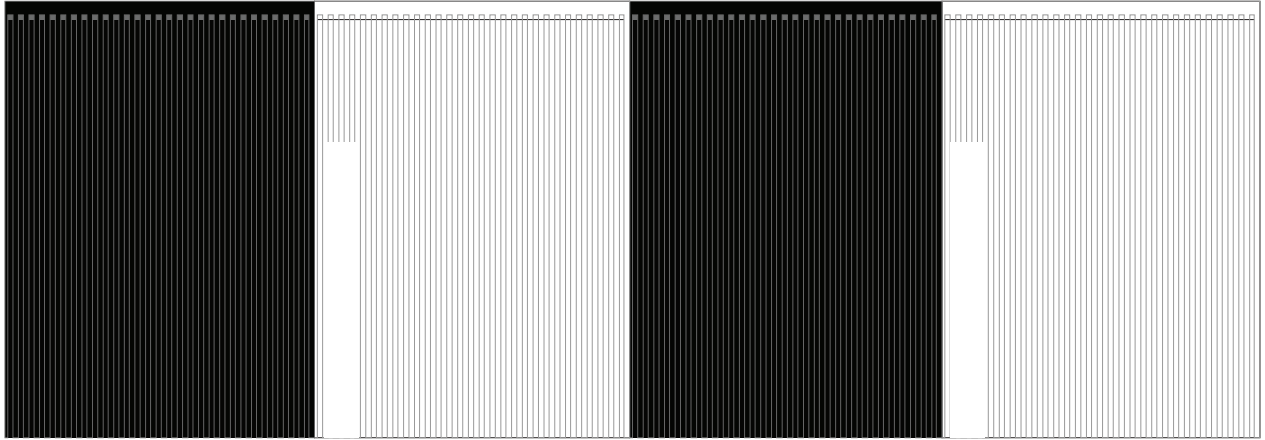
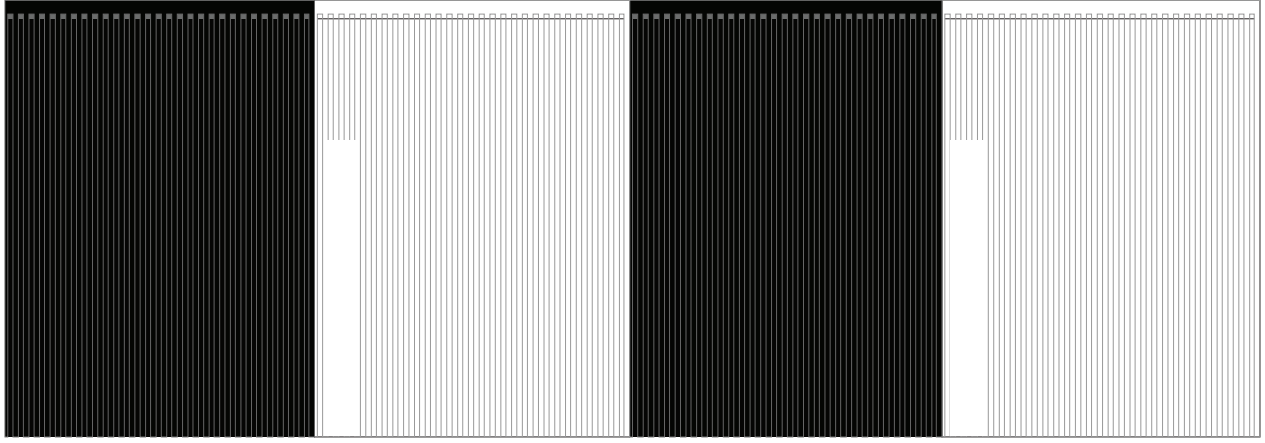
These two parts go on the third stage of the rocket



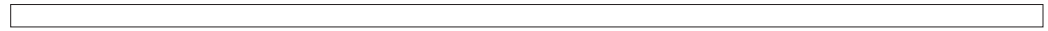
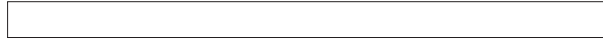


interstage ring

print on  
heavy cardstock

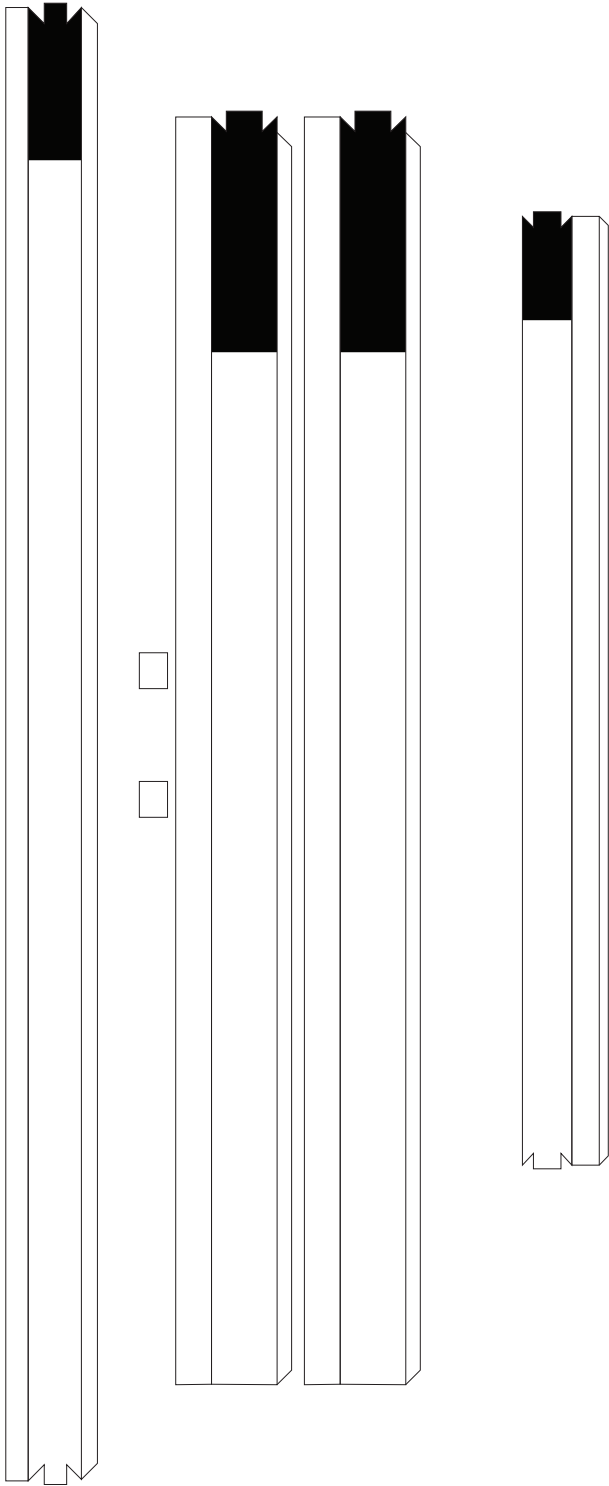


print on  
heavy cardstock

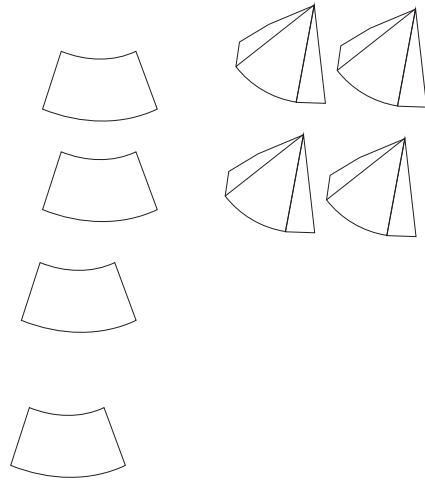


These pieces go underneath the fuel lines

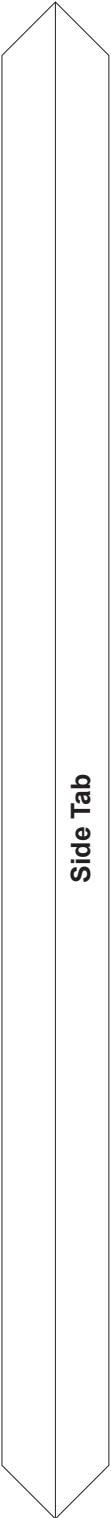
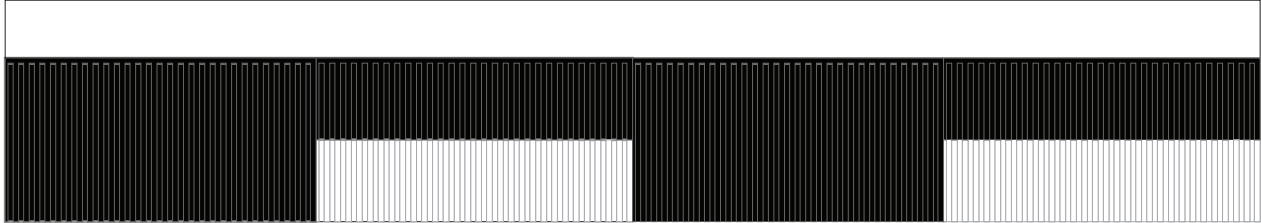
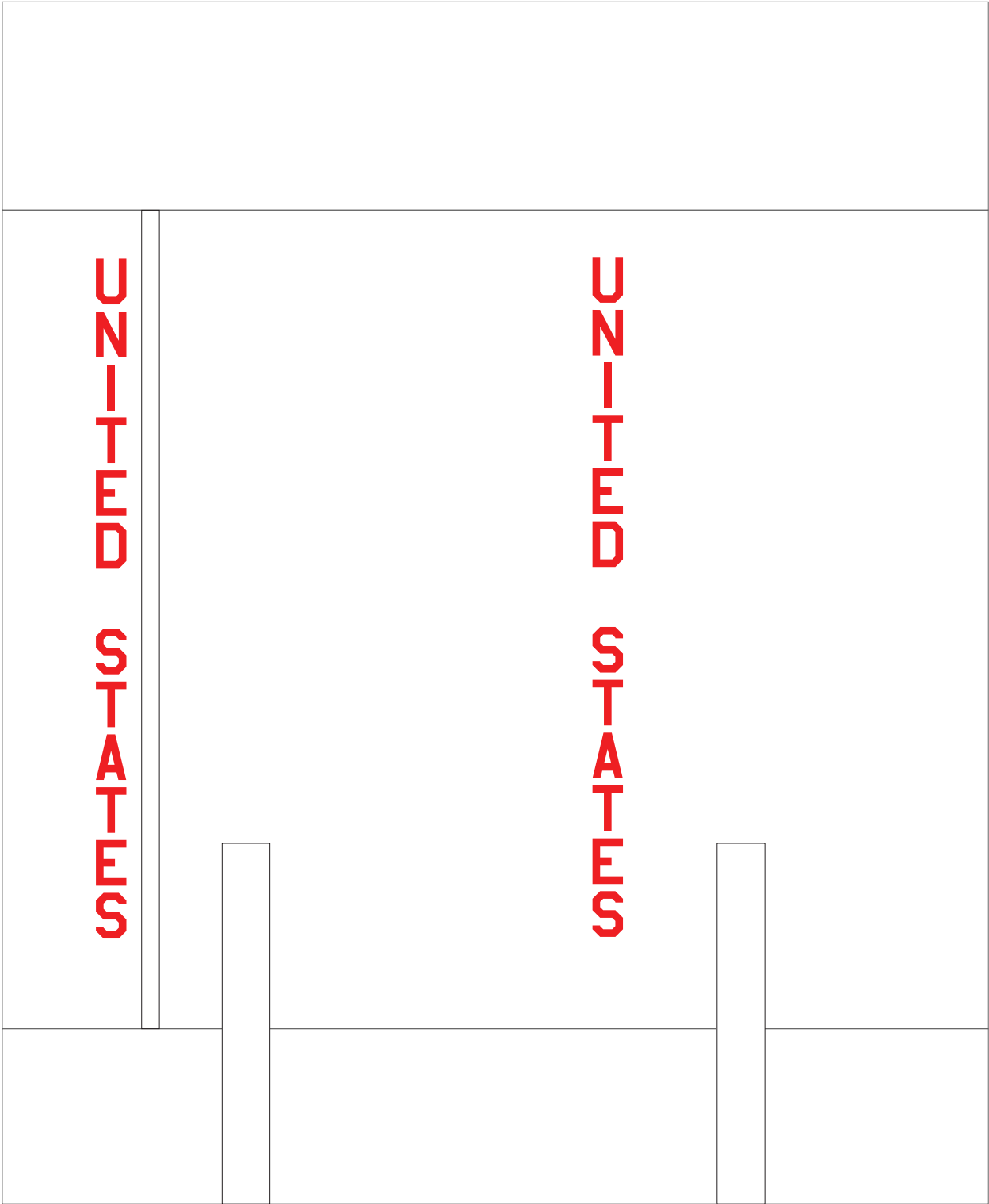




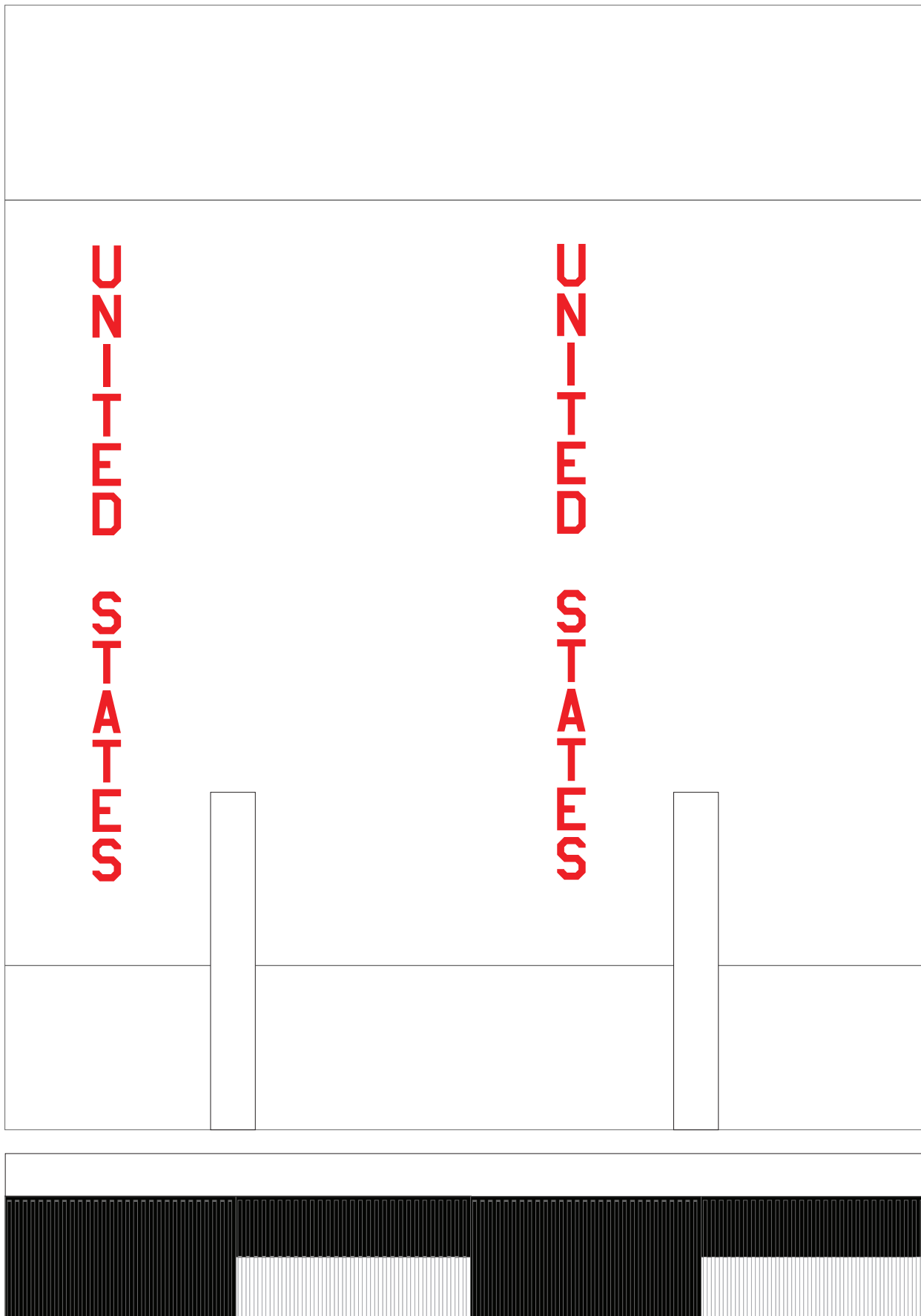
print on lighter cardstock, 80-90 lbs



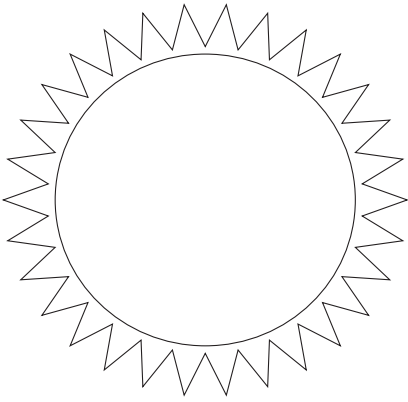
print on  
heavy cardstock



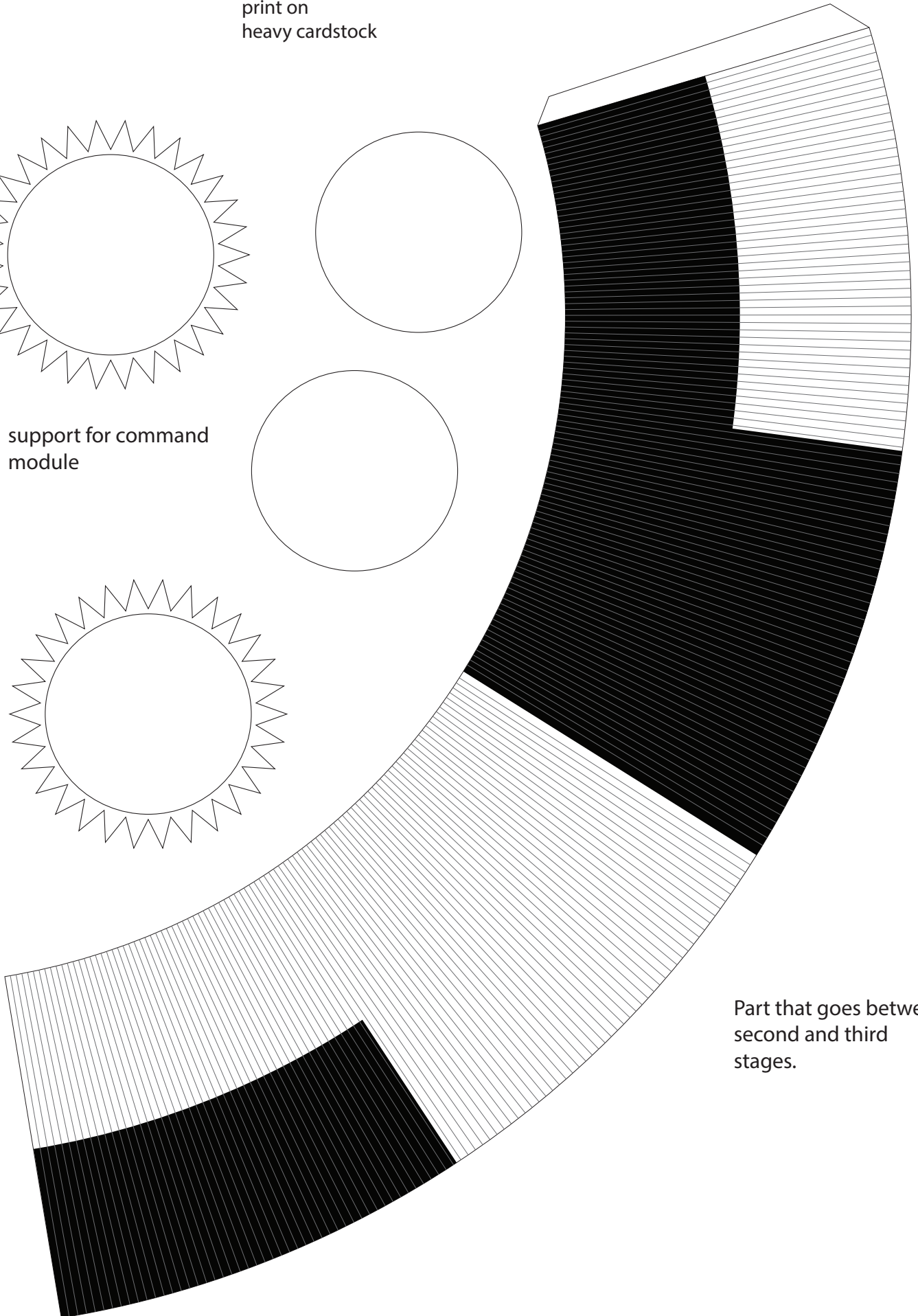
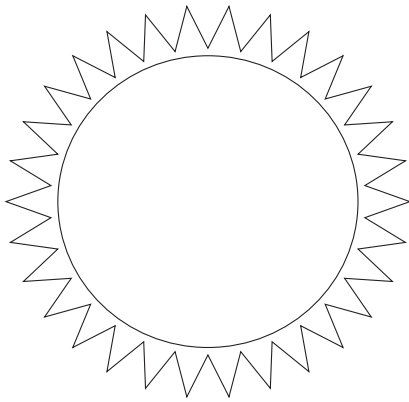
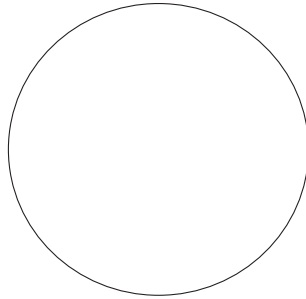
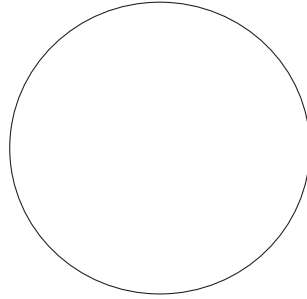
print on  
heavy cardstock



print on  
heavy cardstock

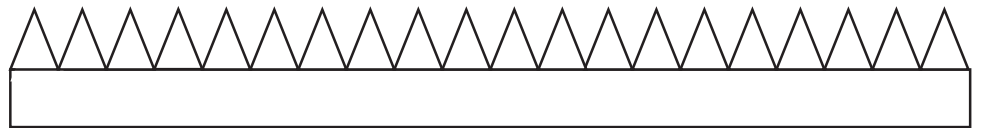
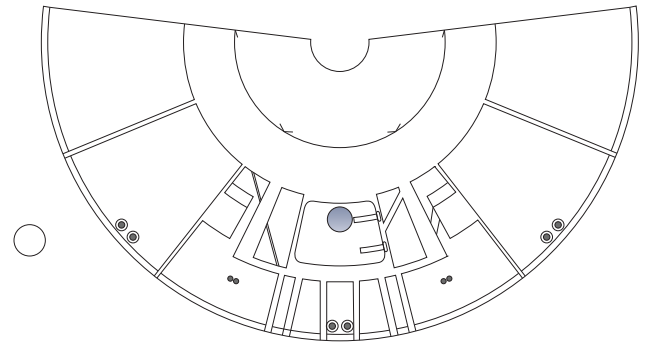
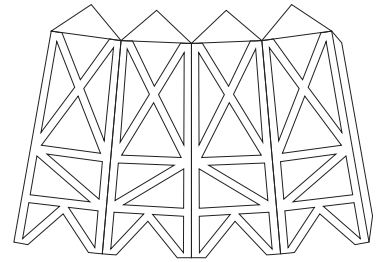
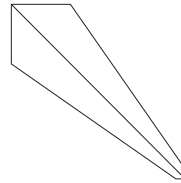
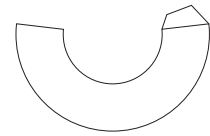
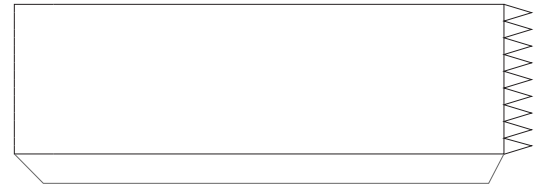
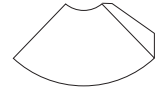
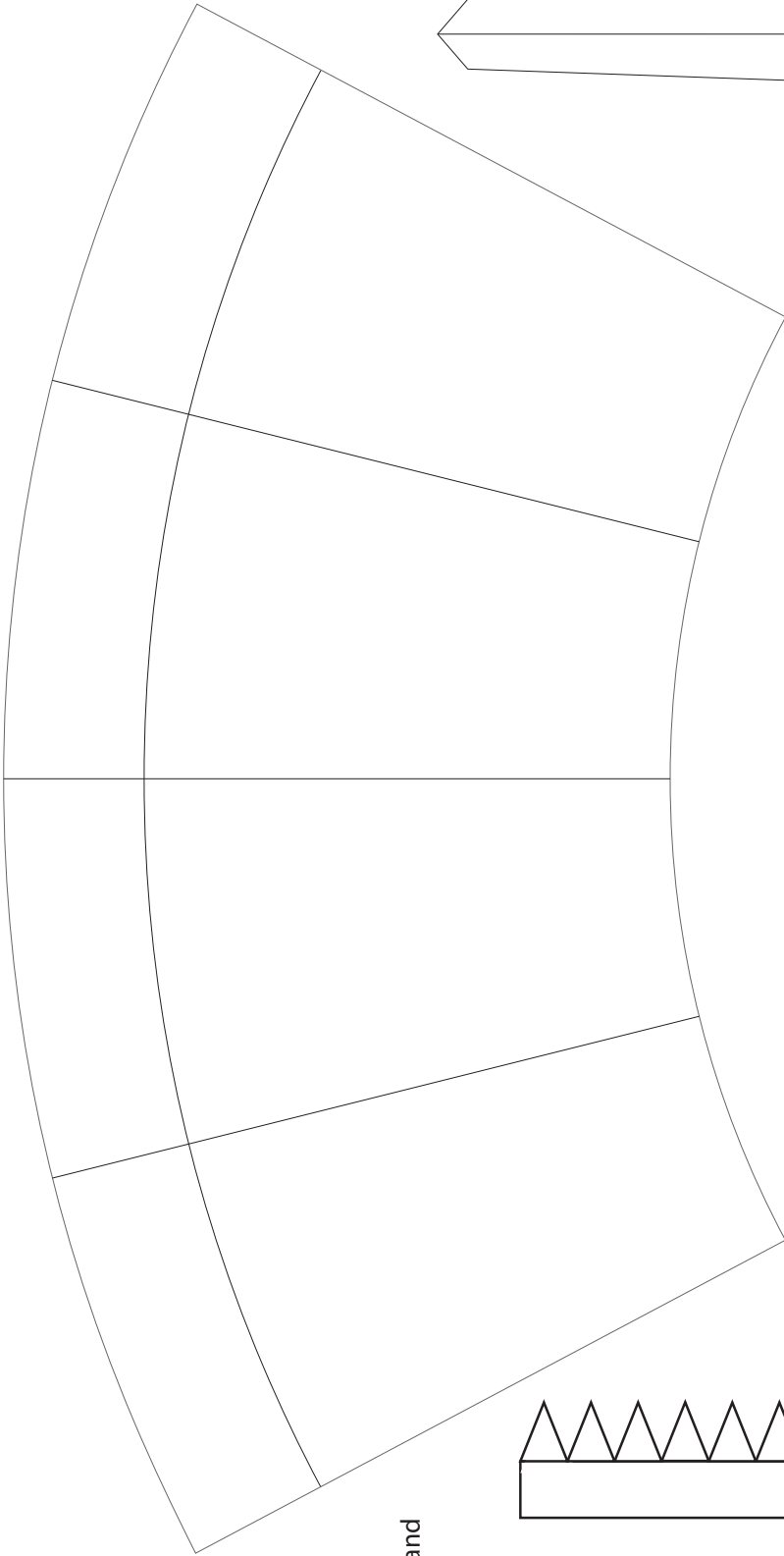


support for command  
module

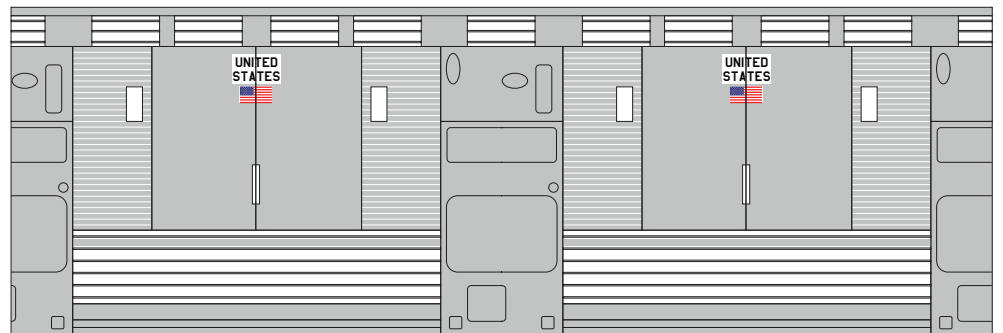


Part that goes between  
second and third  
stages.

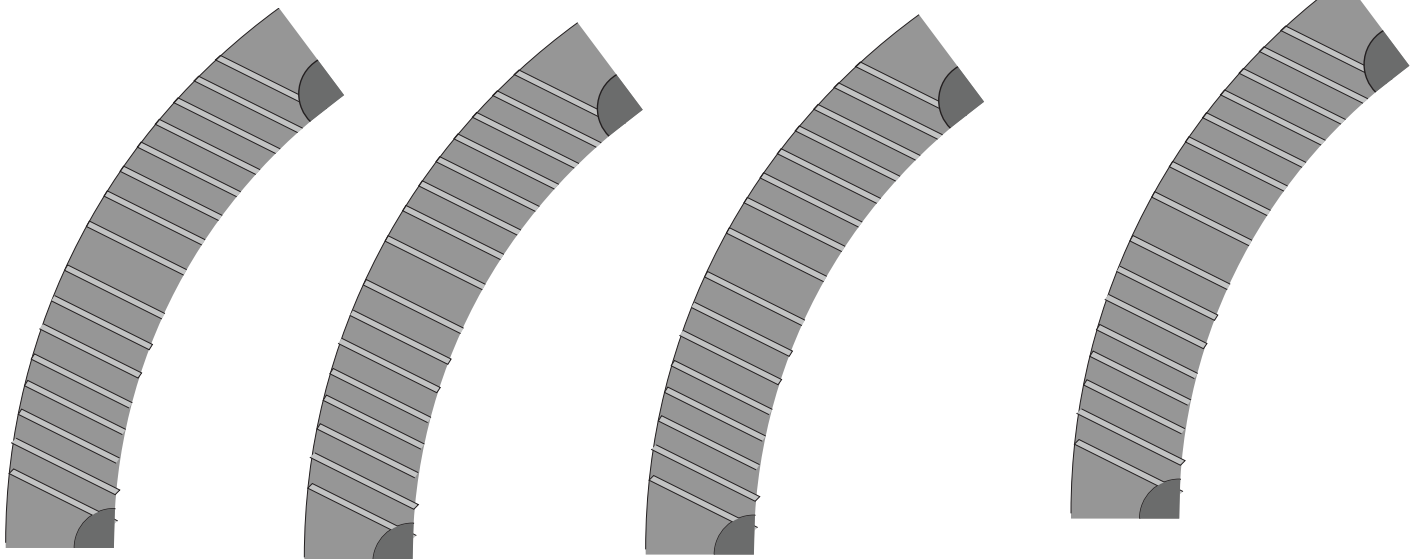
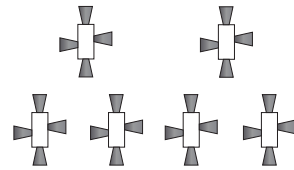
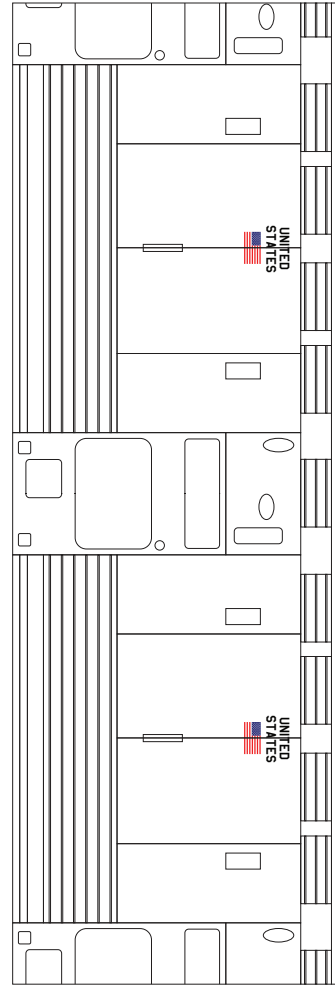
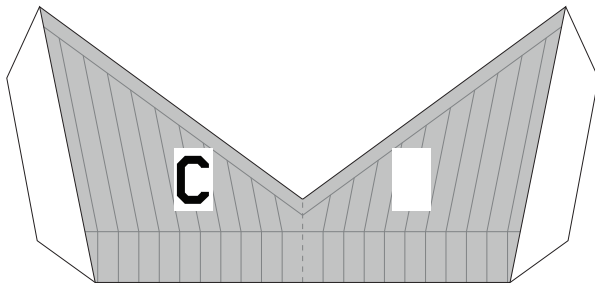
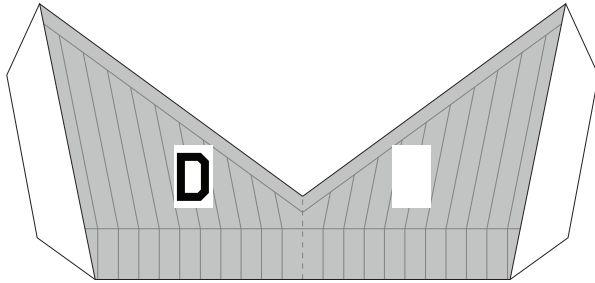
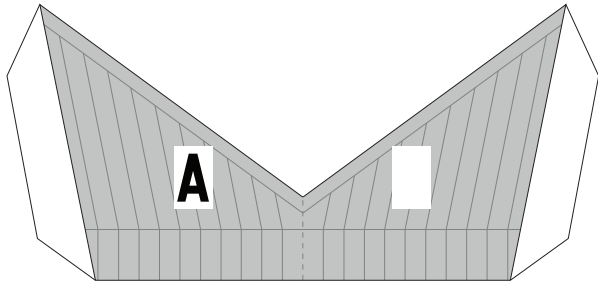
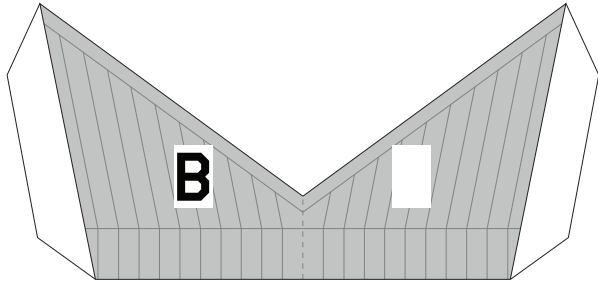
print on heavy cardstock



Use this panel to build the command module without silver cardstock

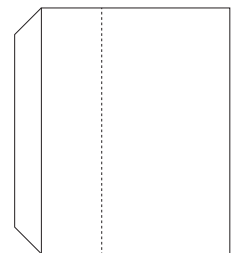
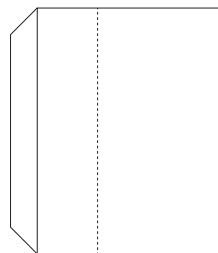
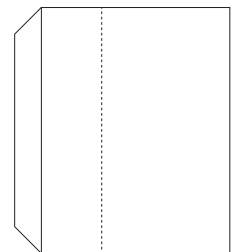
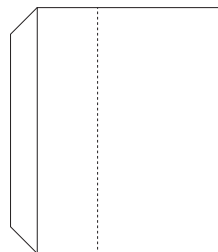
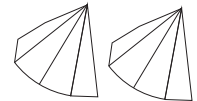
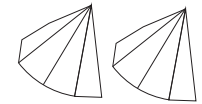
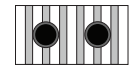
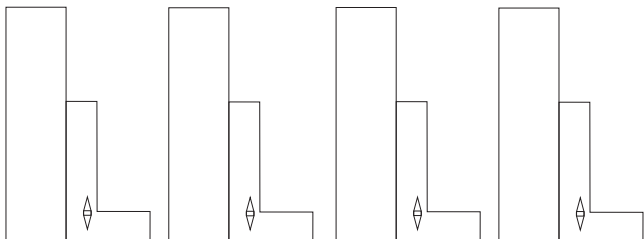
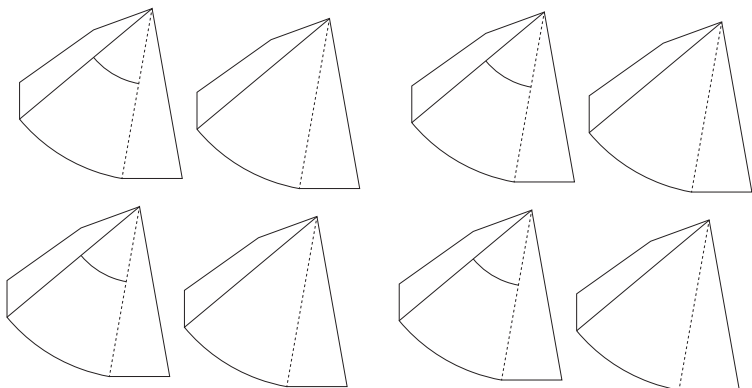
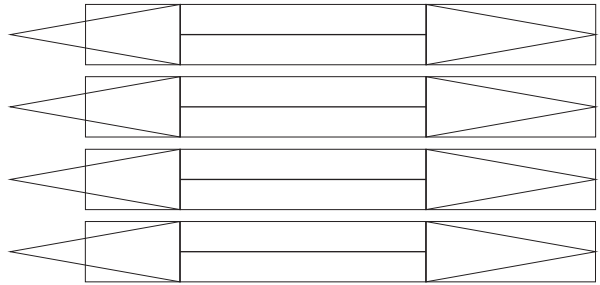
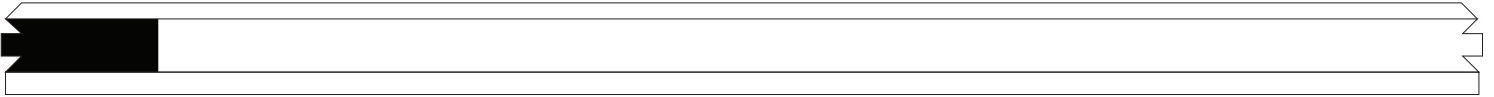
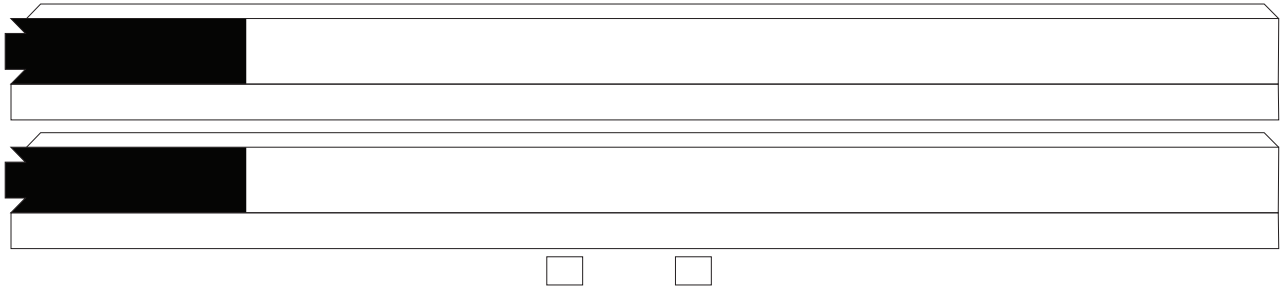


print onto clear sticker paper, then cut out and transfer stickers onto shiny side of silver cardstock

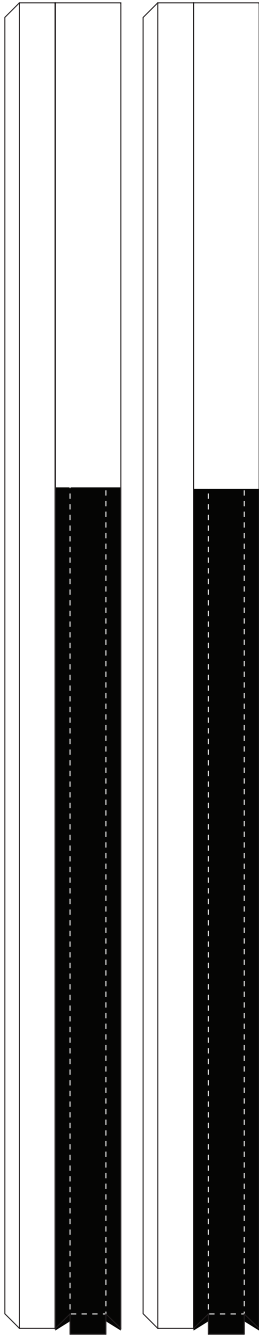
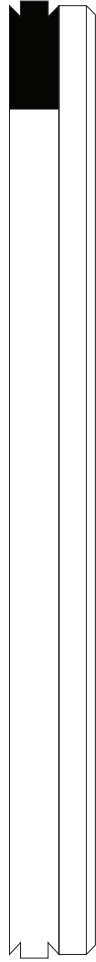
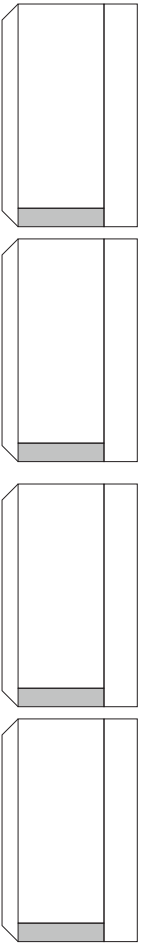
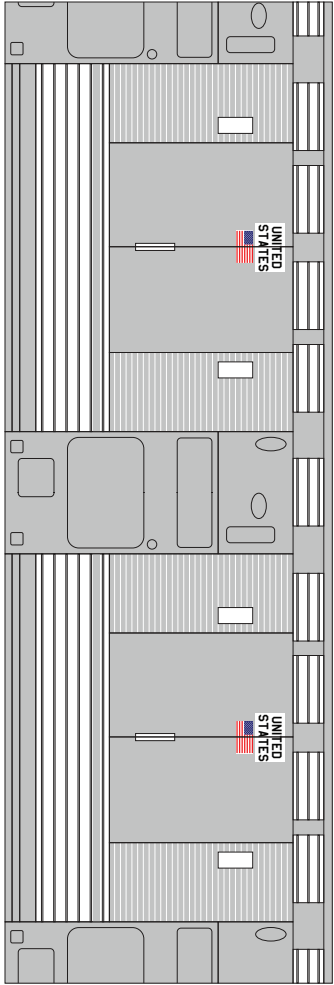




print on lighter cardstock, 80-90 lbs

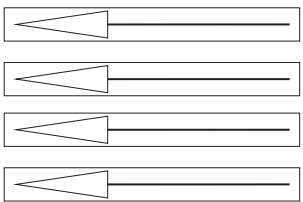


print on lighter cardstock, 80-90 lbs

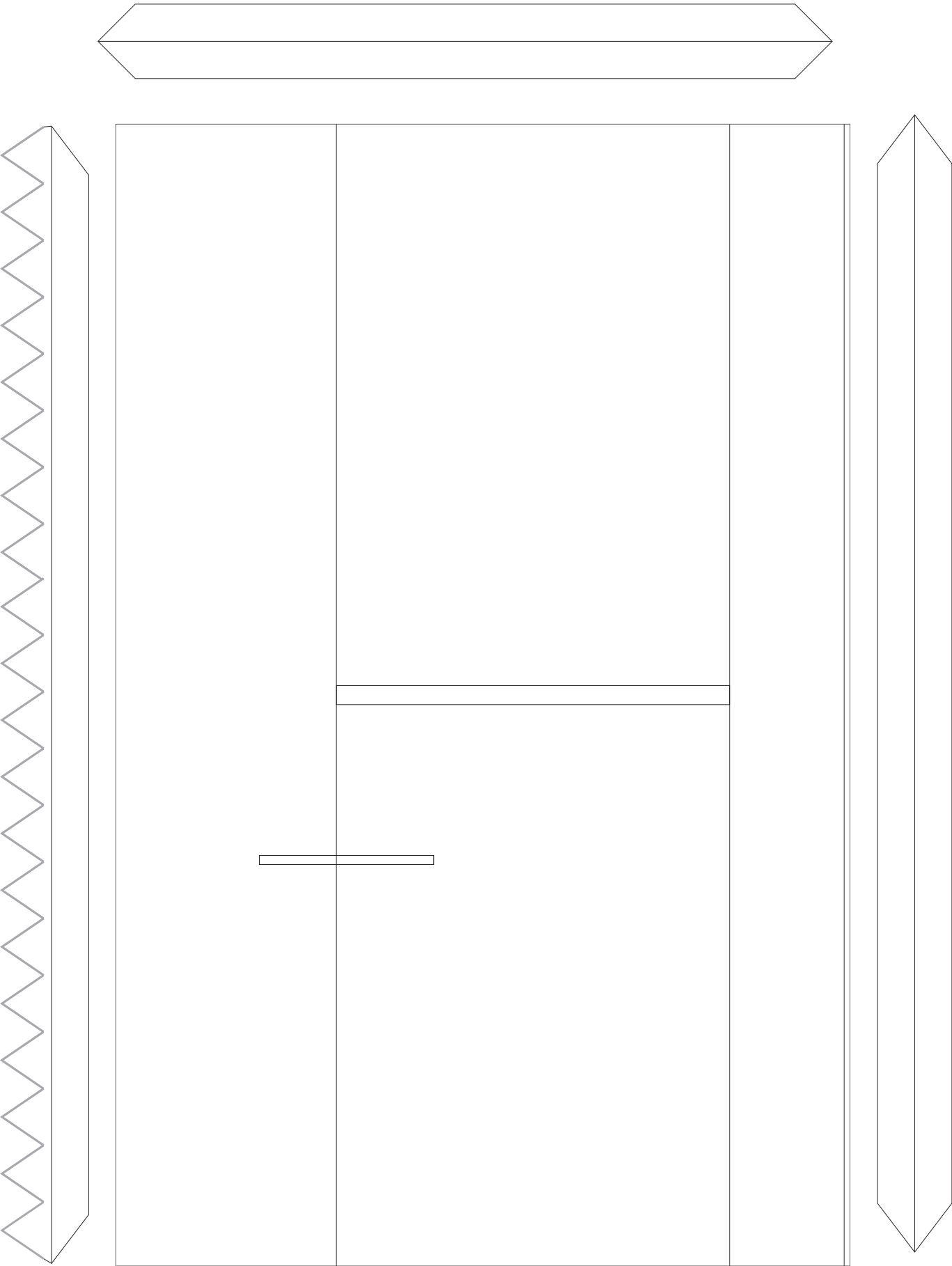


**B**  
**A**  
**D**  
**C**

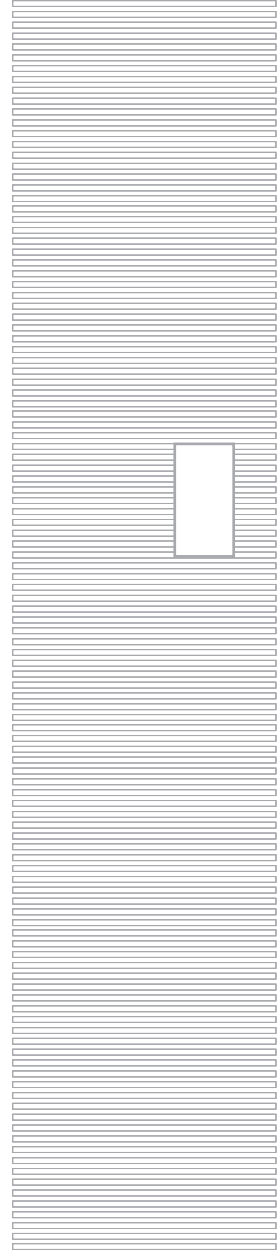
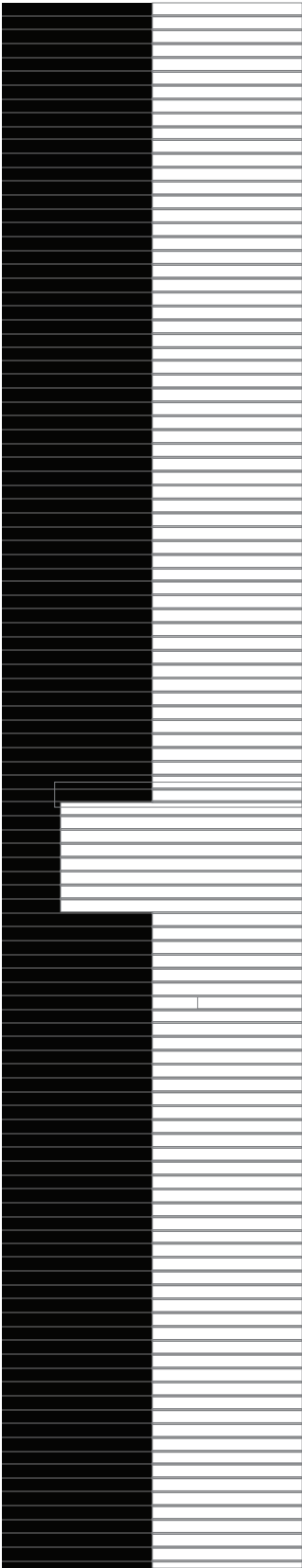
**B**  
**A**  
**D**  
**C**



print on heavy cardstock

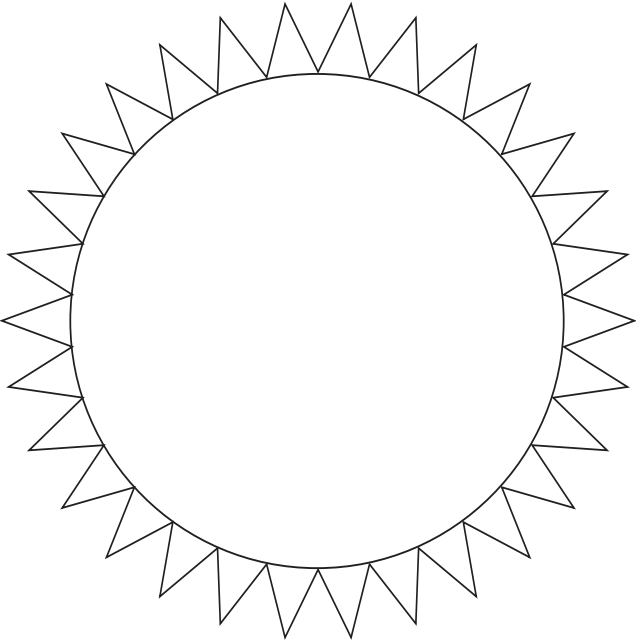
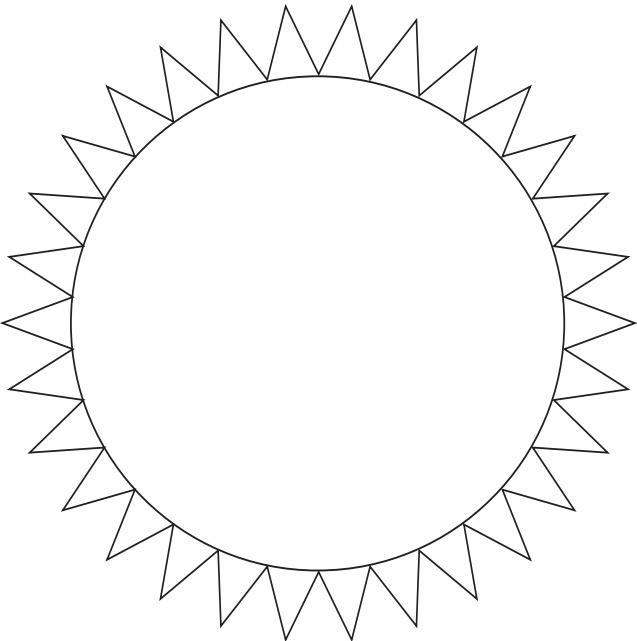
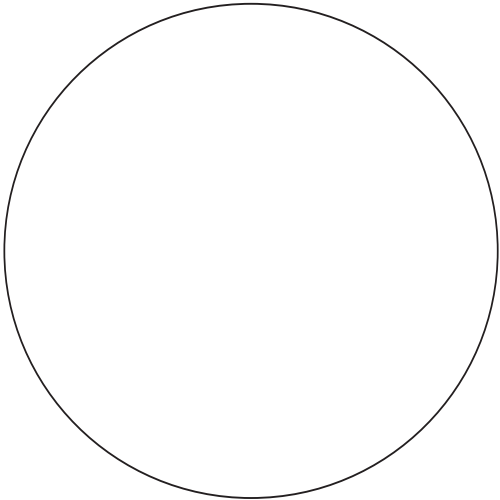
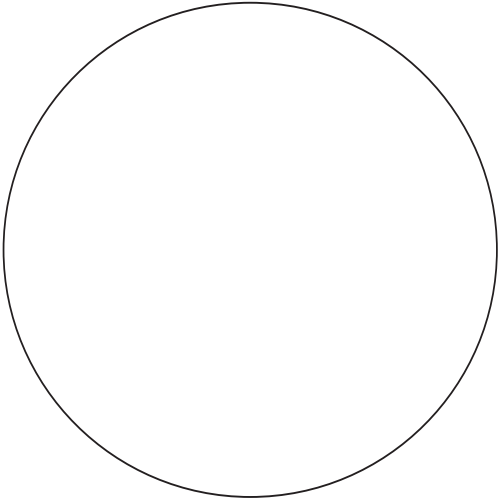
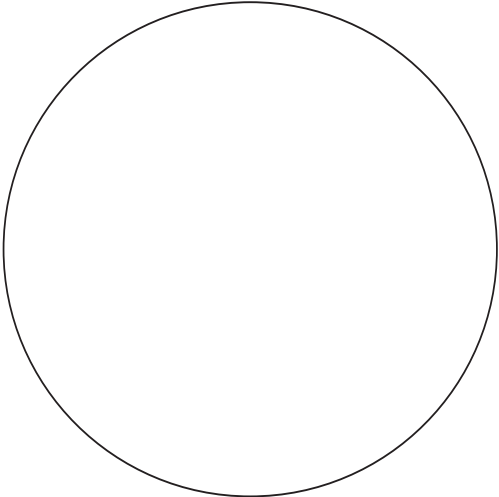
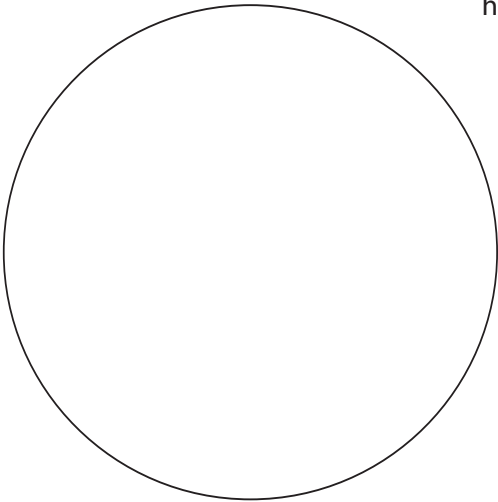


print on  
heavy cardstock



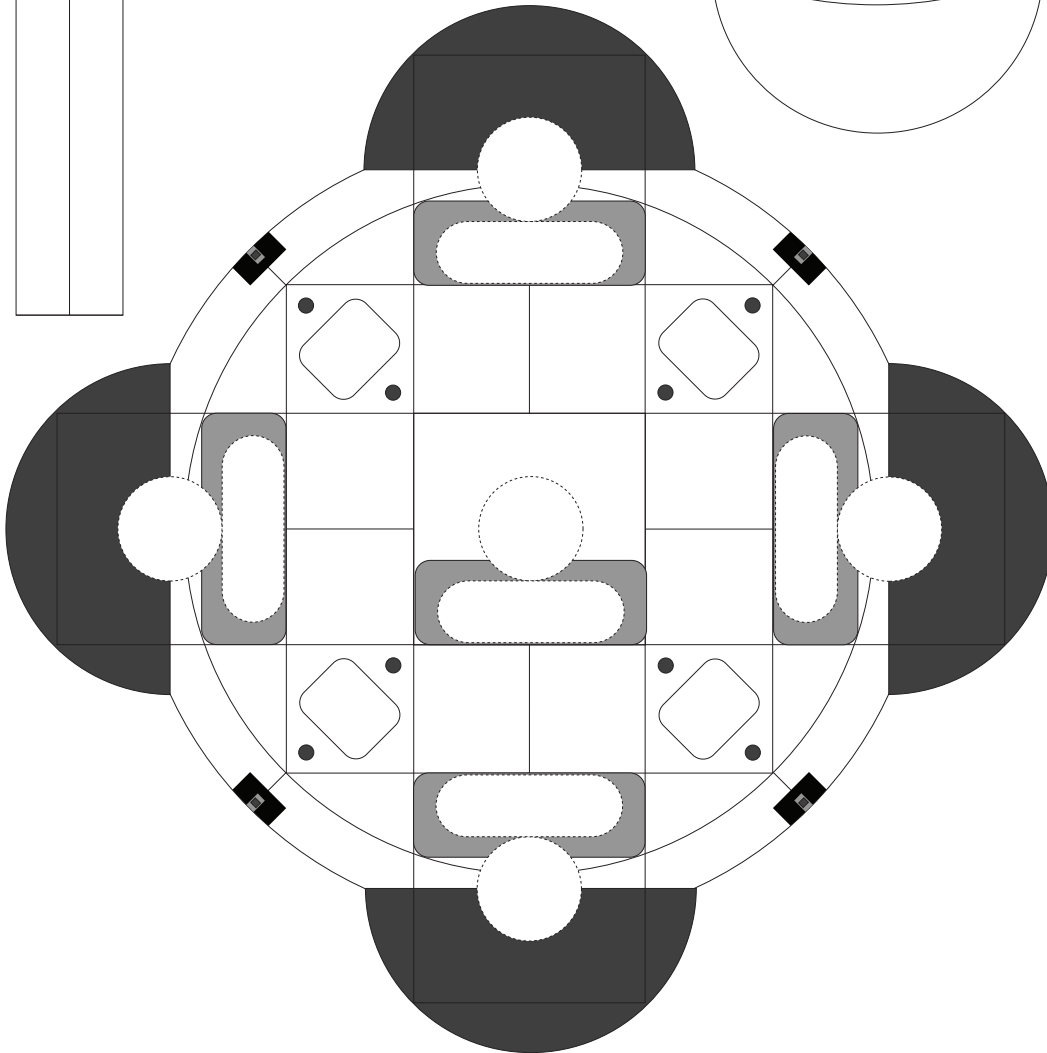
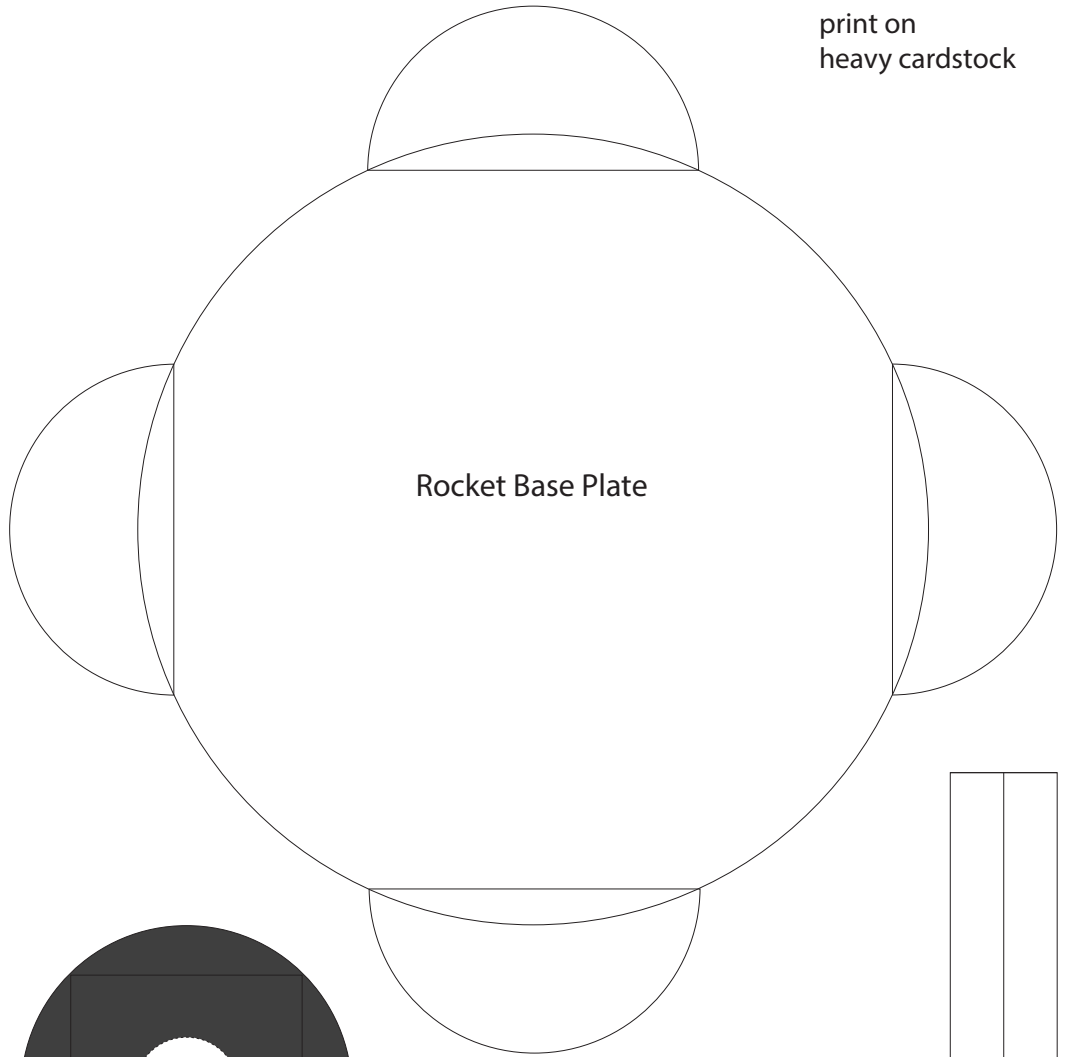
Core formers for the third stage

print on  
heavy cardstock



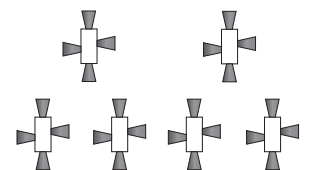
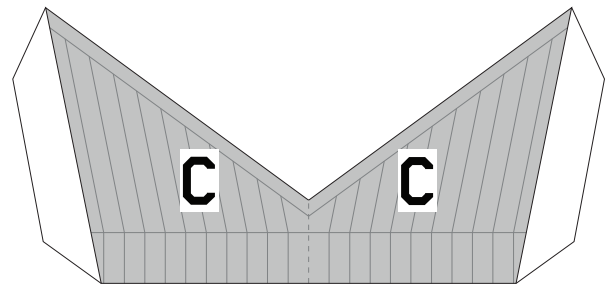
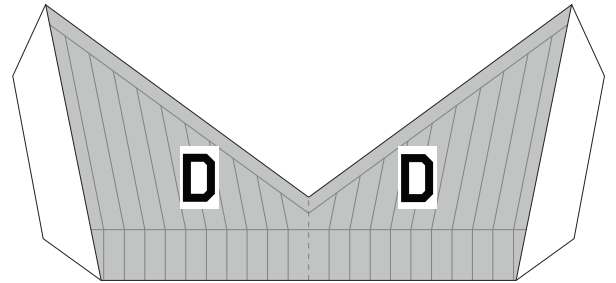
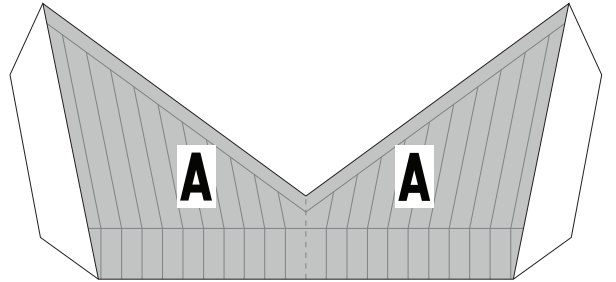
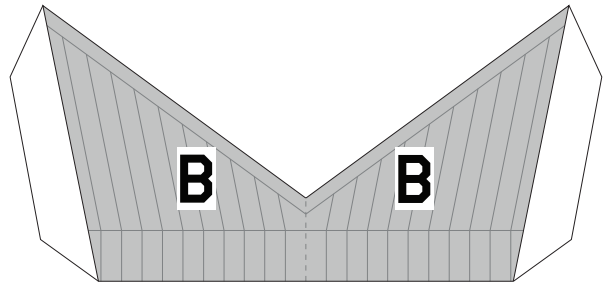
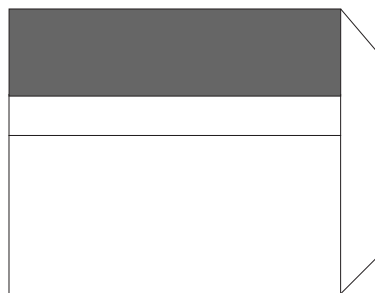
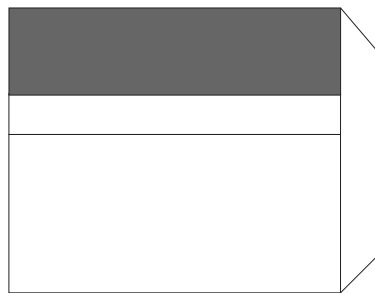
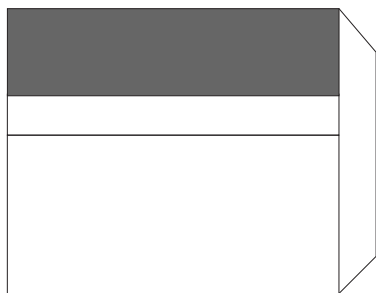
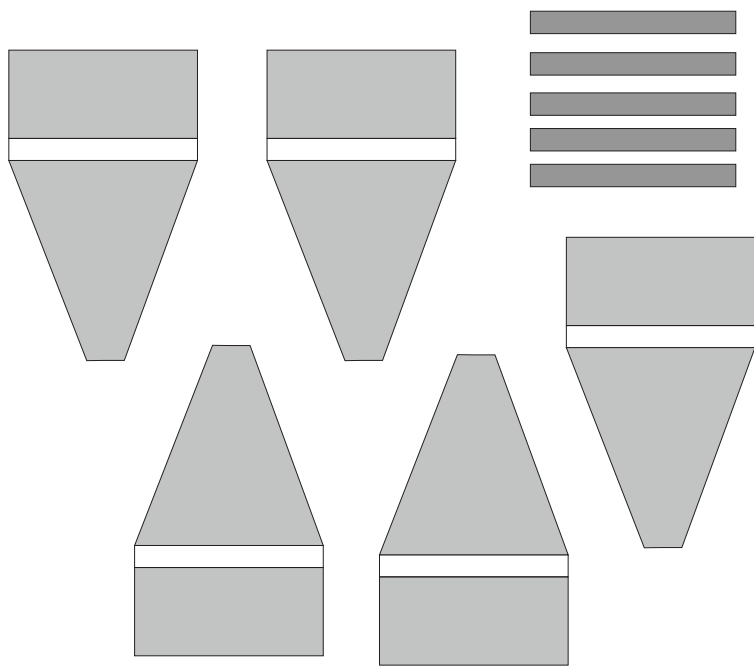
print on  
heavy cardstock

Bottom Tab for First Stage



Bottom Tab for First Stage

These are optional parts used for building the model without silver cardstock  
Print on heavy cardstock (110 lbs)



These are optional parts used for building the model without silver cardstock  
Print on heavy cardstock (110 lbs)

