

# Suzanne's Woodworking

Projects for Carviewright and CNC Routers

[www.suzanne woodworking.ca](http://www.suzanne woodworking.ca)

[info@suzanne woodworking.ca](mailto:info@suzanne woodworking.ca)



## Antique Table Lamp

A lamp is another thing I always wanted to do for myself and decided to match it with the vase project. In other words, the same type of finish.

Very easy to put together but you definitely need a table saw for your miter cuts.

Make sure you're lamp shade will work with your lamp kit since there are more than one type.

Enjoy!



### Material List

#### Patterns

- Sides and bottom
- Sides and top

#### Bits

- 1/32" or 1/16" carving bit
- 1/8" cutting bit

#### Material

- 3/4" x 11 pine boards
- wood glue
- sandpaper or mop 220g
- lamp kit
- lamp shade
- chalk paint of your choice
- medium-dark stain
- high gloss varnish
- foam brushes
- lint-free rags

#### Tools

- table saw
- featherboard (optional)
- clamps
- flat screwdriver

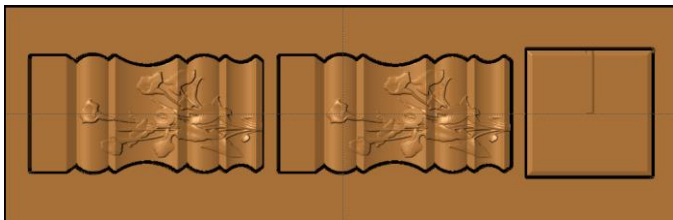
Projects By Suzanne's Woodworking

[www.suzanne woodworking.ca](http://www.suzanne woodworking.ca)

[info@suzanne woodworking.ca](mailto:info@suzanne woodworking.ca)

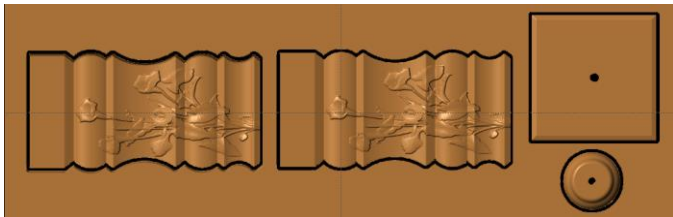
©2014 Suzanne's Woodworking, All rights reserved

# Antique Table Lamp



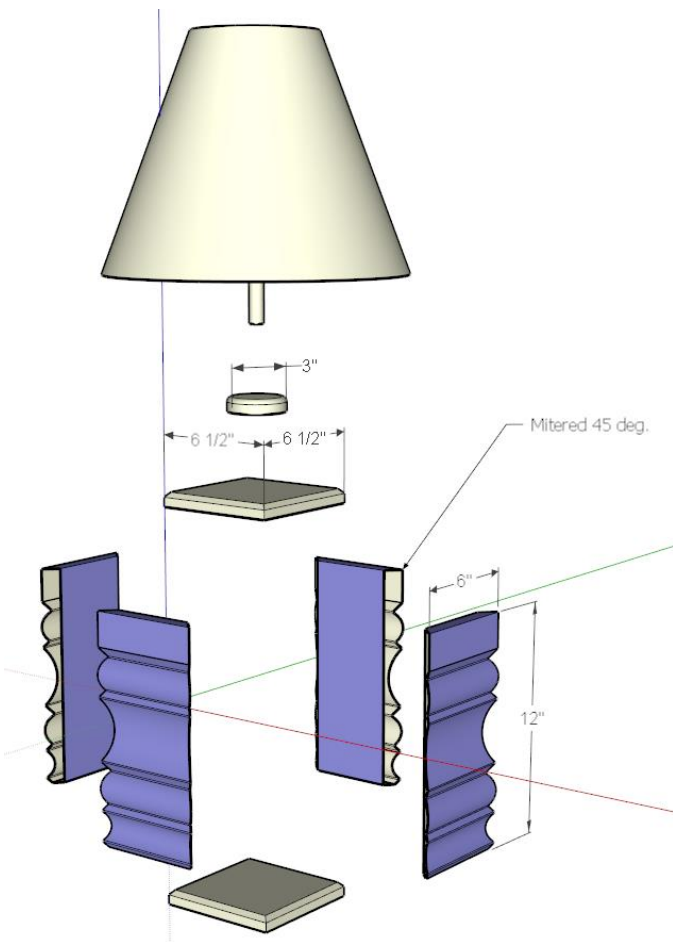
Sides and bottom 34" board

Best: 4h45 – Optimal: 9h30 approx.



Sides and top 34" board

Best: 5h10 – Optimal: 10h00 approx.



## INTRO

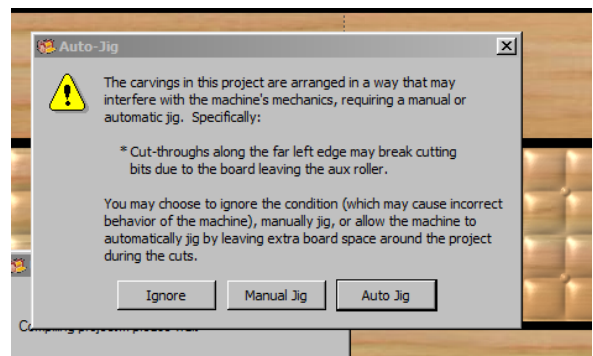
### Carviewright users

The round top is carved at .700" so you may want to use a bigger feather like 1/4". Just follow the steps:

- click on the pattern
- click on the small arrow by the blue feather
- choose 1/4"

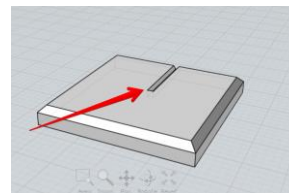
Like always, do not forget your 7" rule for each board and just follow the instructions on your machine.

If you see this message while uploading your files to your card, just click the "Ignore" button and continue uploading



### STL users

When importing STL files, refer to the layout provided to make sure you have the right dimensions as it may change during the importing process. The sides, top and bottom are all carved a .500" and the round top is carved at .700". Add a hole in the two top pieces of .375" dia. Add a slot of 1/4" x 1/4" x 3" to your bottom piece for the cord.



# Antique Table Lamp

## STEP 1

Remove your pieces from the boards by cutting of the tabs with a utility knife or flex hobby saw. Sand all your pieces properly with a 220g sandpaper, mop or sponge.

## STEP 2

Miter all four sides at 45°. Your miter has to go all to the round curve as shown in figure 1. Be as precise as possible otherwise your corners won't look good. (figure 1)



Figure 1

## STEP 2

With clamps ready, glue your four sides together and let dry completely. (figure 2)



Figure 2

## STEP 3

Now align the two holes for the top and glue. Adding weight is probably the best way to secure them. Let dry for a little while and glue the top to the sides. (figure 3)



Figure 3

## STEP 4

There are two types of lamp kits which you need to make sure to buy the one that will fit your shade. I am using the bottom one (figure 4,5)



Figure 4



Figure 5



# Antique Table Lamp

## STEP 5

With you lamp kit instructions in hand, start putting it together and run it through your lamp box. This step can also be done after the finishing process and before gluing the bottom. (figure 6, 7)



Figure 6



Figure 7

## STEP 6

Before going any further with the lamp kit, pull it out a couple of inches and begin the finishing process by apply one coat of stain and let dry completely. This will prevent the wood grain from puff up and show through in the final sanding process. (figure 8)

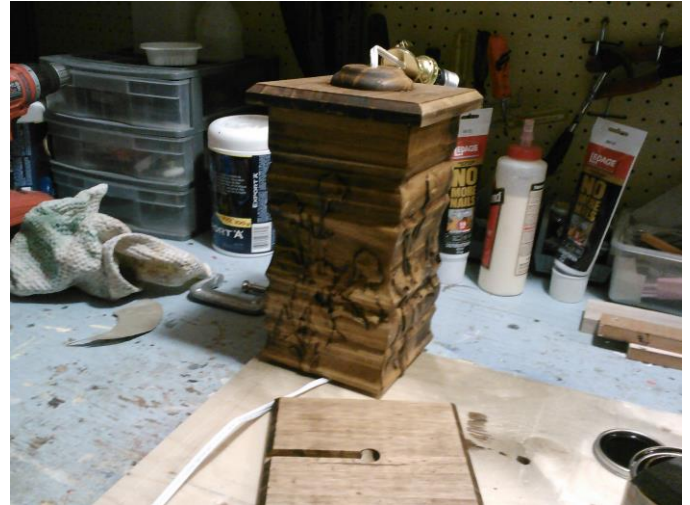


Figure 8

## STEP 7

Now apply at least 2 coats of chalk paint and let dry completely. (figure 9)



Figure 9

# Antique Table Lamp

## STEP 8

By making sure your lamp kit is installed properly, you can now glue your bottom by aligning the cord into the slot, let dry. (figure 10)



Figure 10

## STEP 9

Start the final sanding process and a 220g mop or sponge is the best way to go. (figure 11, 12)



Figure 11



Figure 12

## STEP 10

Apply one or two coats of varnish. I used the high gloss sheen from [www.sherwin-williams.com](http://www.sherwin-williams.com) which dries very quickly and gives a beautiful shine. (figure 13)



Figure 13



# Antique Table Lamp

## STEP 11

Once your varnish is completely dry, you can finish installing your lamp kit by pulling the cord back out and making sure the socket assembly sits properly on your base. (figure 14)



Figure 14

Now add a light bulb, your shade and your lamp is done.

I hope you've enjoyed this project and if you have any questions or comments, do not hesitate to communicate with me via email at [info@suzannewoodworking.ca](mailto:info@suzannewoodworking.ca) or by phone at 1-877-623-0412.

For more individual projects, go to.



For a VIP membership which gives you unlimited access to all my projects, go to [www.suzannewoodworking.ca](http://www.suzannewoodworking.ca)



Thank you for your support!



*Suzanne Ramsay*