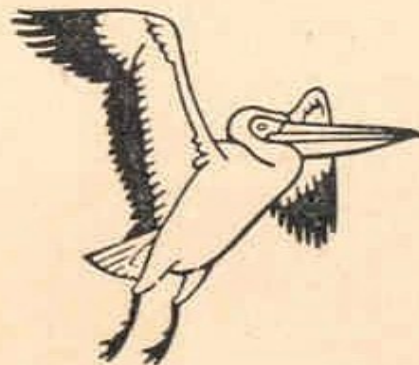


W. SLUCKIN

Minds and Machines

What are 'electronic brains'? Are they capable of thought? What can they do? These are some of the questions answered in this book, which describes the workings of these machines, and discusses the influence the study of them has had on modern psychology



A PELICAN BOOK

A PELICAN BOOK



Wladyslaw Sluckin was born in 1919 in Warsaw. He received his schooling there, and later graduated in Engineering at London University. He then had a number of industrial jobs, mostly concerned with electrical engineering, and later did some teaching. While working full-time, he attended evening lectures at Birkbeck College, London, and in 1950 graduated in Psychology. Apart from some articles in technical journals, he has published a small text-book, *Principles of Alternating Currents*, and is also the co-author of *Statistics for the Social Sciences*. He is married with two children. His main professional interests lie in the study of Perception and Learning and in Industrial Psychology. He is at present a lecturer in Psychology in the University of Durham.

GENIAC

MANUALS, TEXTS AND COURSE MATERIALS

CONTENTS:

1. SIMPLE ELECTRIC BRAIN MACHINES AND HOW TO MAKE THEM.
2. BEGINNERS MANUAL.
3. WIRING DIAGRAMS.
4. MINDS AND MACHINES.
5. SYMBOLIC ANALYSIS OF RELAY CIRCUITS.
6. GENIAC STUDY GUIDE.
7. LABELS FOR GENIAC.

IF YOU HAVE ANY QUESTIONS WRITE, USING INQUIRY BLANKS TO: COURSE SUPERVISOR,
OLIVER GARFIELD CO., 126 LEXINGTON AVENUE, NEW YORK 16, N. Y.

OLIVER GARFIELD

DESIGN MANUFACTURING DISTRIBUTION

126 LEXINGTON AVENUE

NEW YORK 16, N. Y.

6106

POSTMA

INS

RECHANGEMENTS
NECESSARY

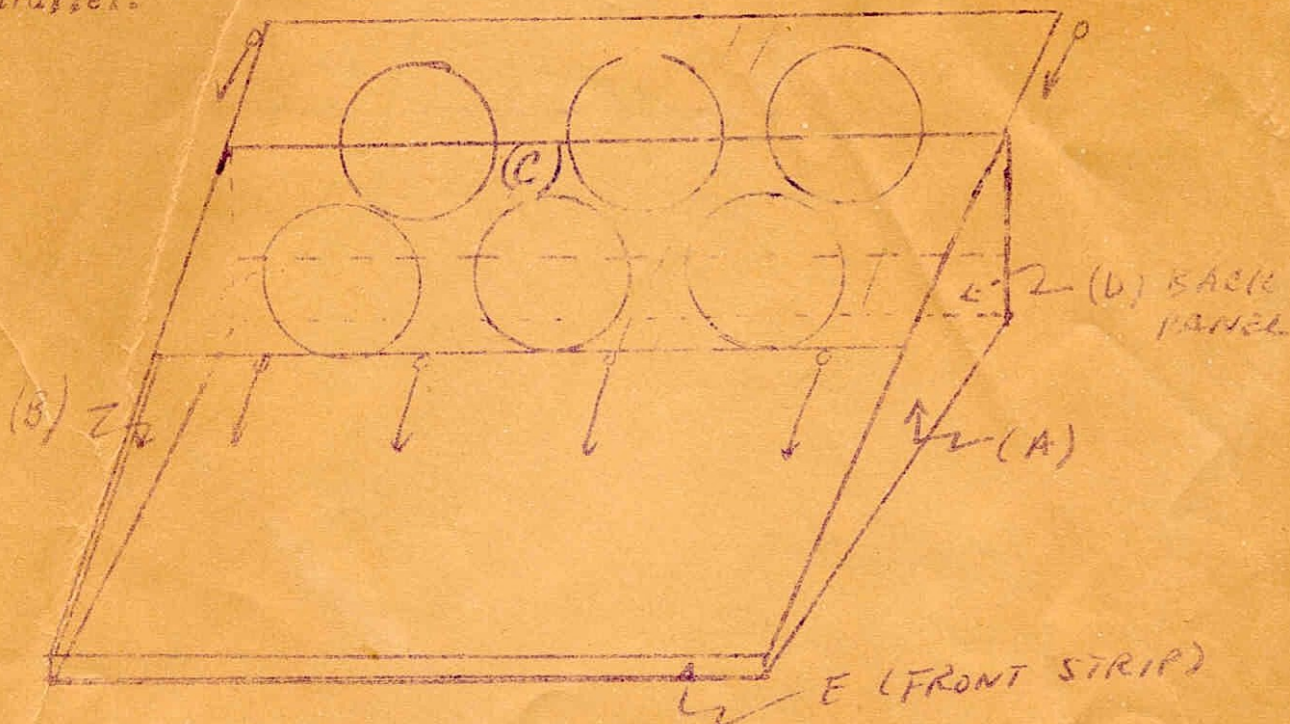
THIS PARCEL MAY BE OPENED FOR POSTAL INSPECTION IF NECESSARY
RETURN POSTAGE GUARANTEED

INSTRUCTIONS FOR PUPPING GENIAC FRAME TOGETHER

TO SPACE WOODEN SIDE PANELS A and B so that they are just far enough apart to fit the masonite control board C with its sections punched holes into grooves.

1) Lock on the rear strip D so that the position of the side panels is unchanged. There may be a slight overlap.

2) Pack on the front strip E so that the two side panels remain parallel.



FOR YOUR INFORMATION:

To increase the ease of operation we have introduced a new combination switch and battery holder. This may be used in place of the two separate items now listed in the GENIAC Manual by connecting one lead of the Pfun stock Slip and the other, grounded, to the bolt holding the switch to the panel.

Instead of the crayoff pencils listed in the book we now provide labels printed on paper.