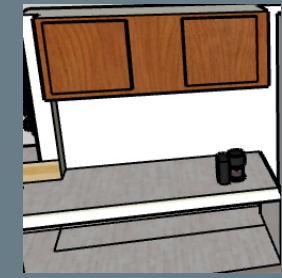




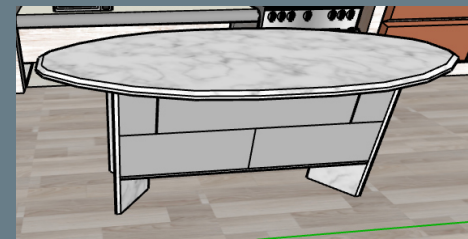
Roll-Under Sink



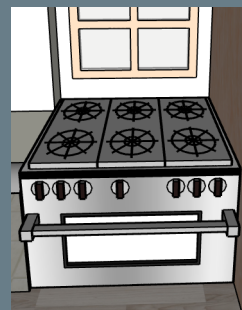
Cabinet



Countertop Table



Stove Oven



Microwave



Intended Clients

My accessible kitchen is tailored for clients with multiple sclerosis using wheelchairs. Maneuverability and space management were considered, with a roll-under sink and reachable cabinets. A lower countertop table and space for the wheelchair under the table with the microwave ensure accessibility to these kitchen features. Durable, easy-to-clean materials for floors and cabinets guarantee that wheelchair clients can thrive in their kitchens for a long time.

Wheelchair Kitchen