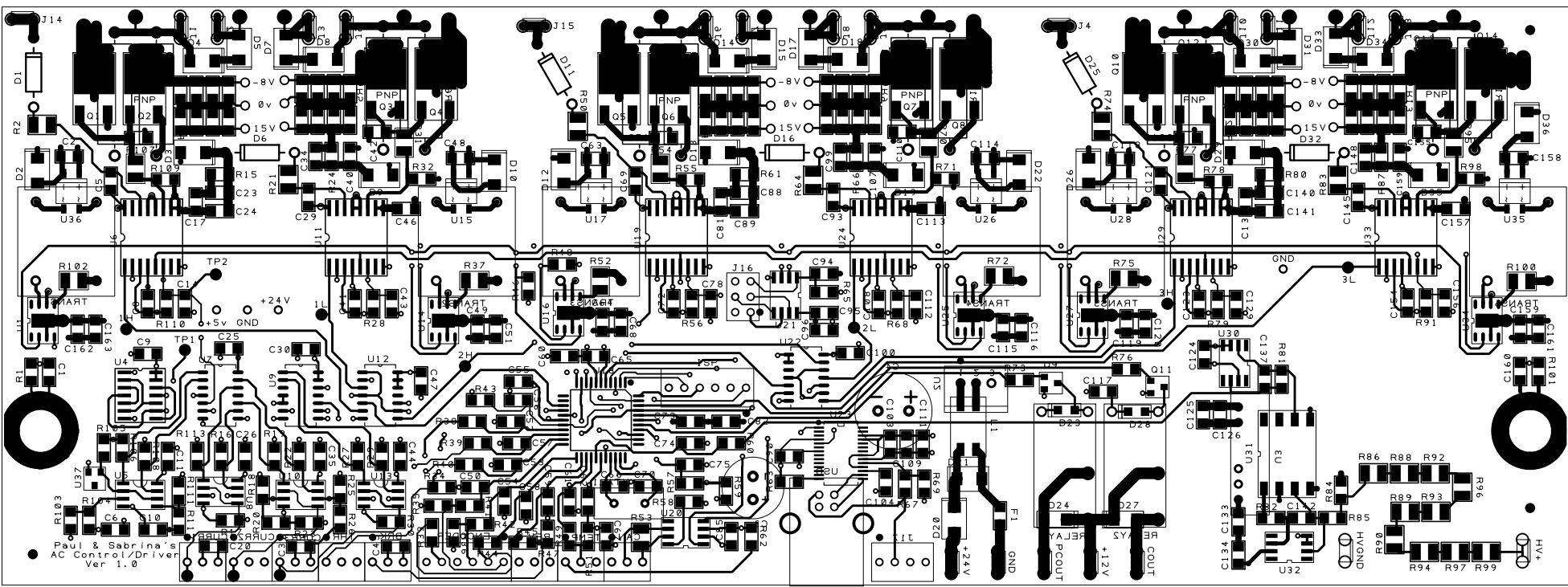
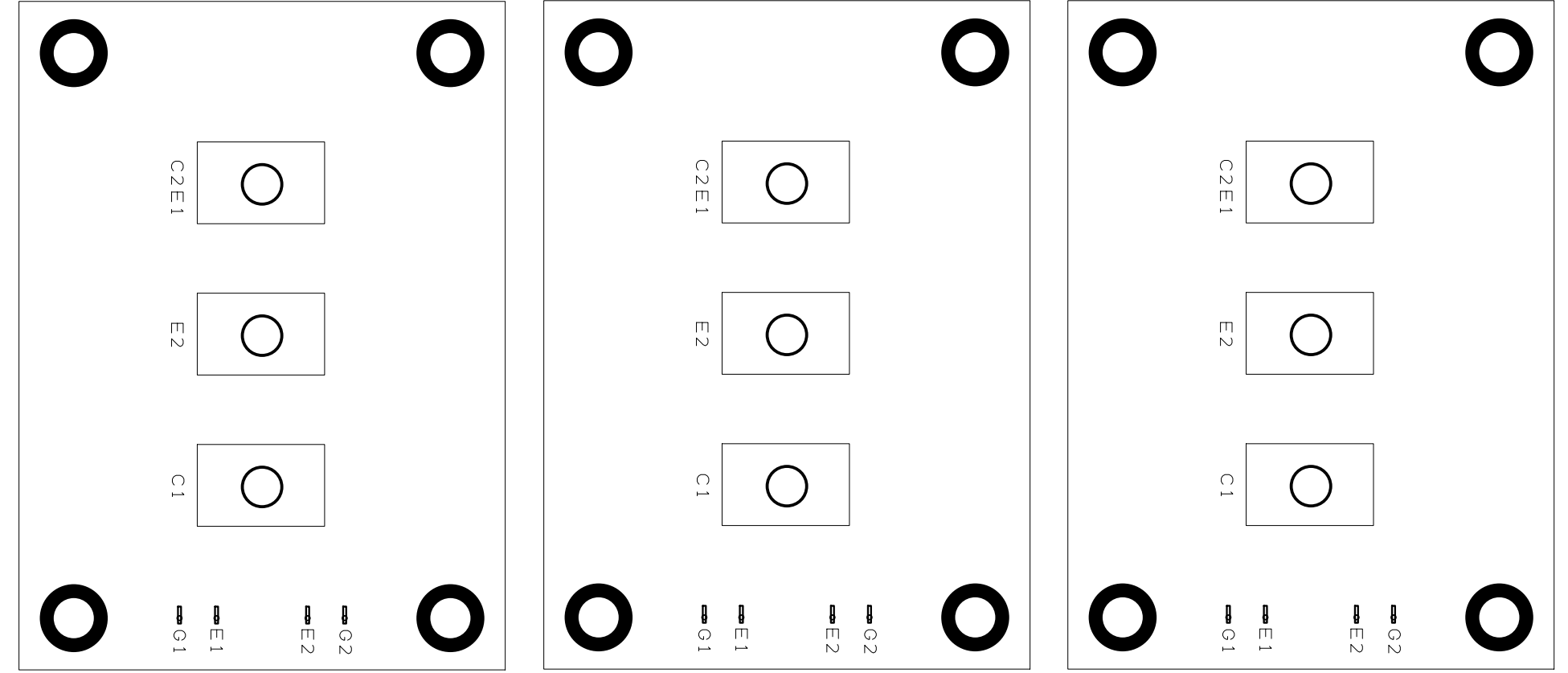


J14, J15, J4 are all connected together, and then connected to bus capacitor +
 The 12 female spade connectors on the bottom of the board plug into the 12 tabs of the IGBTs (G1/E1/E2/G2)



Paul & Sabrina's
 AC Control/Driver
 Ver 1.0

- current sensor #1 output
- current sensor #1 gnd
- current sensor #1 +5v
- current sensor #2 output
- current sensor #2 gnd
- current sensor #2 +5v
- current sensor #3 output
- current sensor #3 gnd
- current sensor #3 +5v
- hall throttle output
- hall throttle gnd
- hall throttle +5v
- hall brake output
- hall brake gnd
- hall brake +5v
- encoder +24v
- encoder +5v
- encoder gnd
- encoder OE
- encoder DEB
- encoder INDEX
- forward/reverse input
- forward/reverse gnd
- forward/reverse
- forward/reverse gnd
- temperature wire 1
- temperature wire 2
- temperature shield gnd
- CAN GND
- CAN LOW
- CAN HIGH
- USB serial communications
- CONTROL BOARD POWER +24V
- CONTROL BOARD GROUND
- Out to precharge coil +
- System +24V IN
- Out to actuator coil +
- Bus Capacitor GROUND
- Bus Capacitor +