

## Brains: Motor Shield

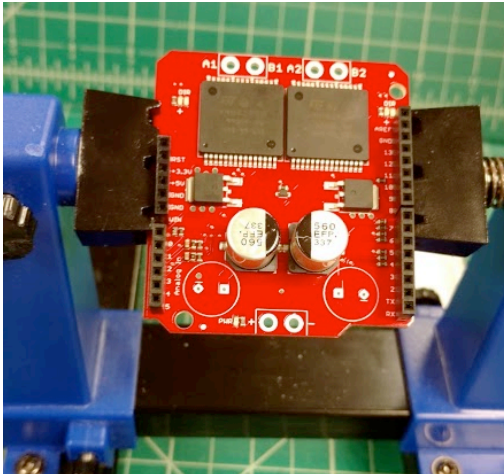
The next board to assemble is the Motor Shield. This shield allows the DC motor to move in both directions, but like the Screw Shield this board still needs headers and screw terminals attached to it. In this section, you will solder the Motor Shield together.

### Bill of Materials:

Name	Number
Monster Moto Shield	1
6 Terminal Shield Stacking Headers for Arduino (R3 Compatible)	2
8 Terminal Shield Stacking Headers for Arduino (R3 Compatible)	2
Screw Terminal – 2-pin 5mm	3

Tools
Wire Cutters
Wire Strippers
Soldering Iron
Solder (Lead Free)

## Step 1:

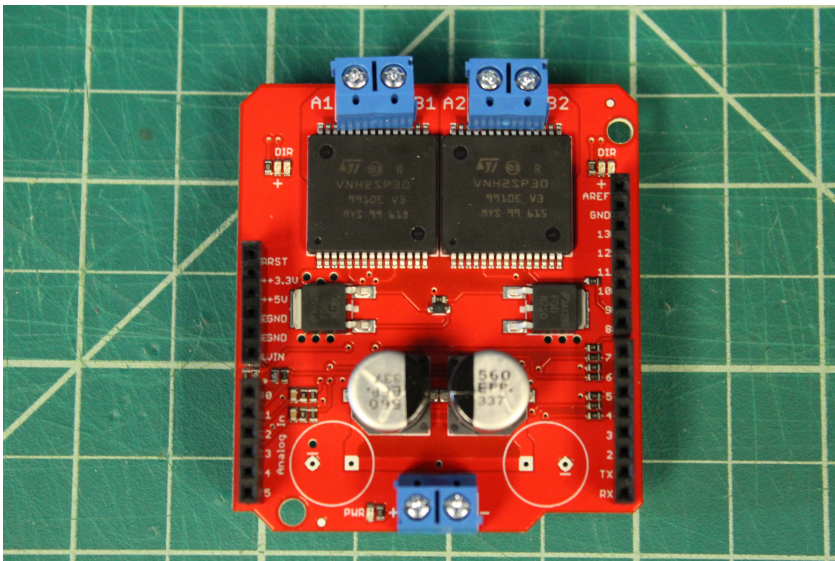


Need:

- 1x Monster Moto Shield
- 2x 6 Terminal Shield Stacking Headers for Arduino (R3 Compatible)
- 2x 8 Terminal Shield Stacking Headers for Arduino (R3 Compatible)

Solder one 6 terminal piece of shield stacking header from VIN to RST, the other at Analog In, 0 to 5. Solder one 8 terminal piece of shield stacking header from RX to 7, the other from 8 to AREF.

## Step 2:



Need:

- 3x Screw Terminal – 2-pin 5mm

Ensuring that the side entries to the terminal block are facing outwards, solder the sets to pins A1 and B1, A2 and B2, and PWR + and PWR -.

You're Done

