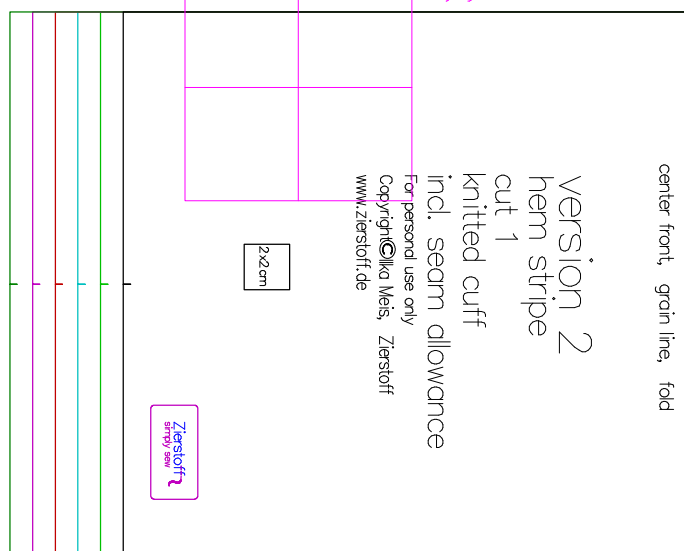


53-55  
55-57  
57-59  
59-61  
61-63  
63-65

control square  
10x10 cm /  
3, 9 x 3, 9 inches  
If necessary join the lines



You will find the "how to print" instructions under: [www.zierstoff.com](http://www.zierstoff.com),  
"about our patterns"  
The pattern is divided into rows (horizontal) and columns (vertical)  
Preferably print out in color.  
Some lines do not show up very clearly when printing black-and-white.  
An overview shows what the pattern looks like at the end.