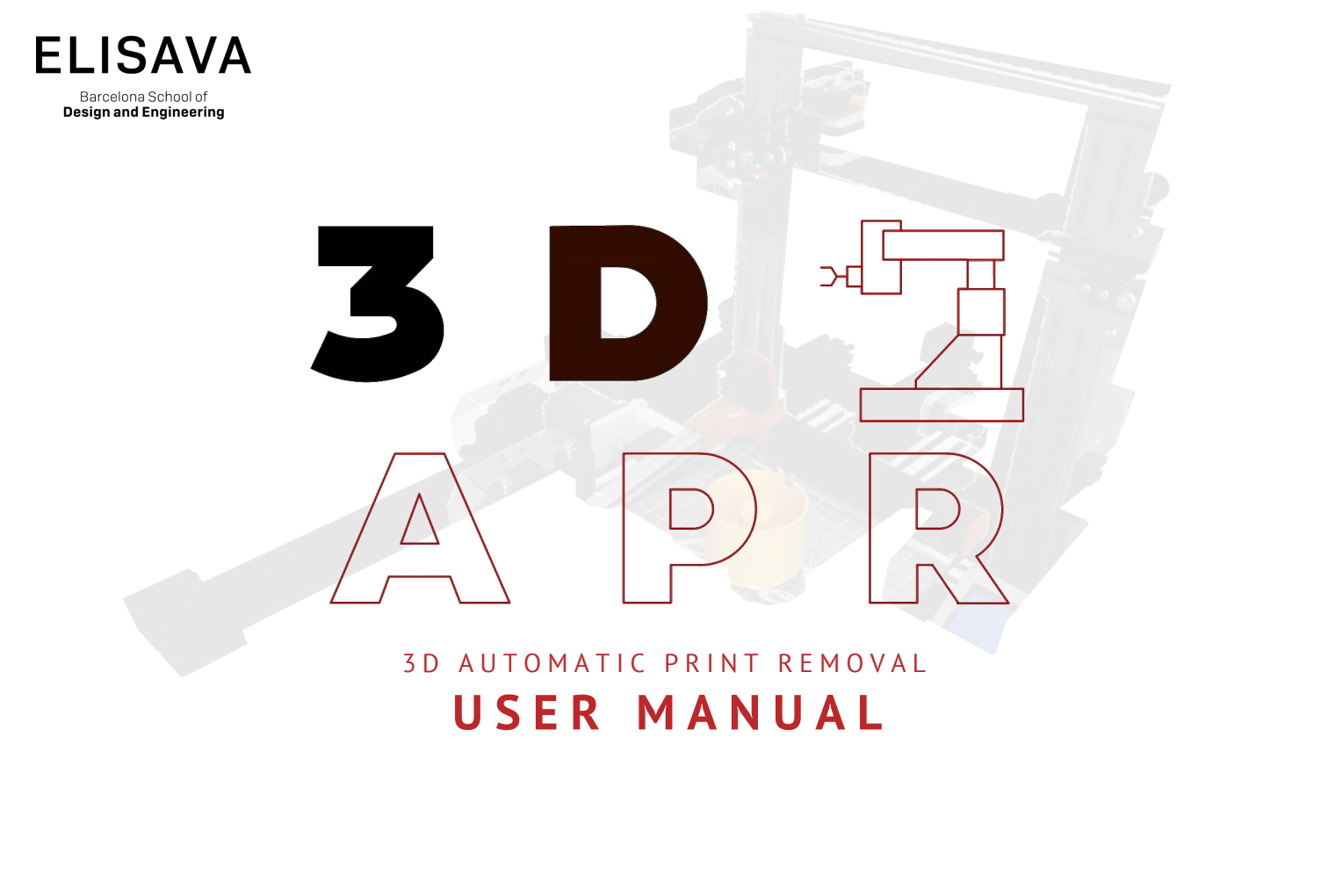


ELISAVA

Barcelona School of
Design and Engineering



3D APR

3D AUTOMATIC PRINT REMOVAL
USER MANUAL

CONTENTS

03 INTRODUCTION

05 PRODUCT OVERVIEW

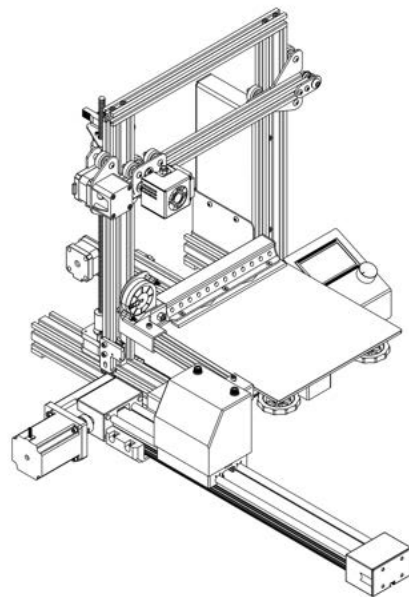
07 PACKAGE LIST

10 ASSEMBLY

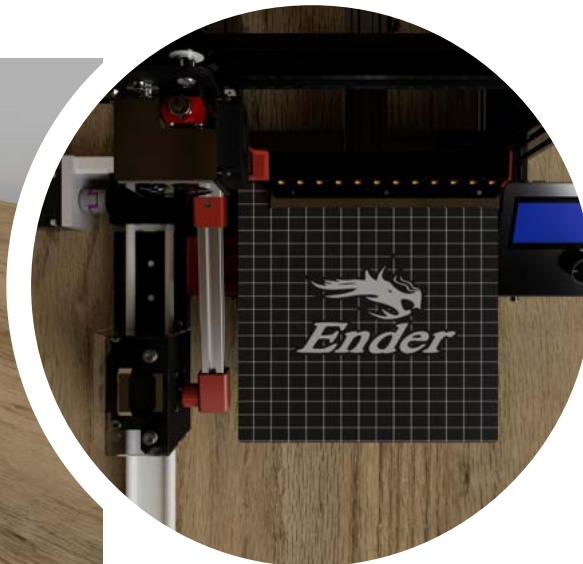
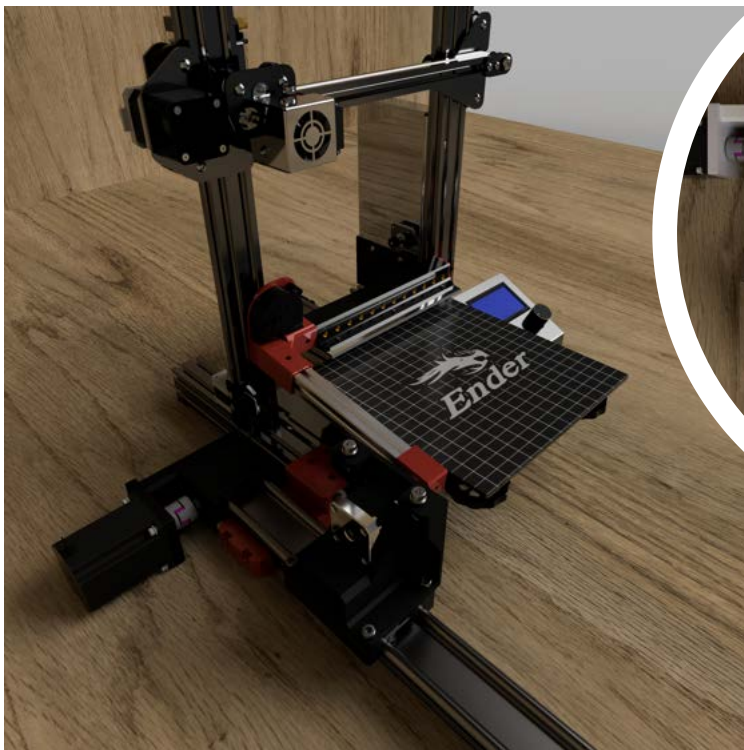
28 OPERATION

35 COMPANION APP

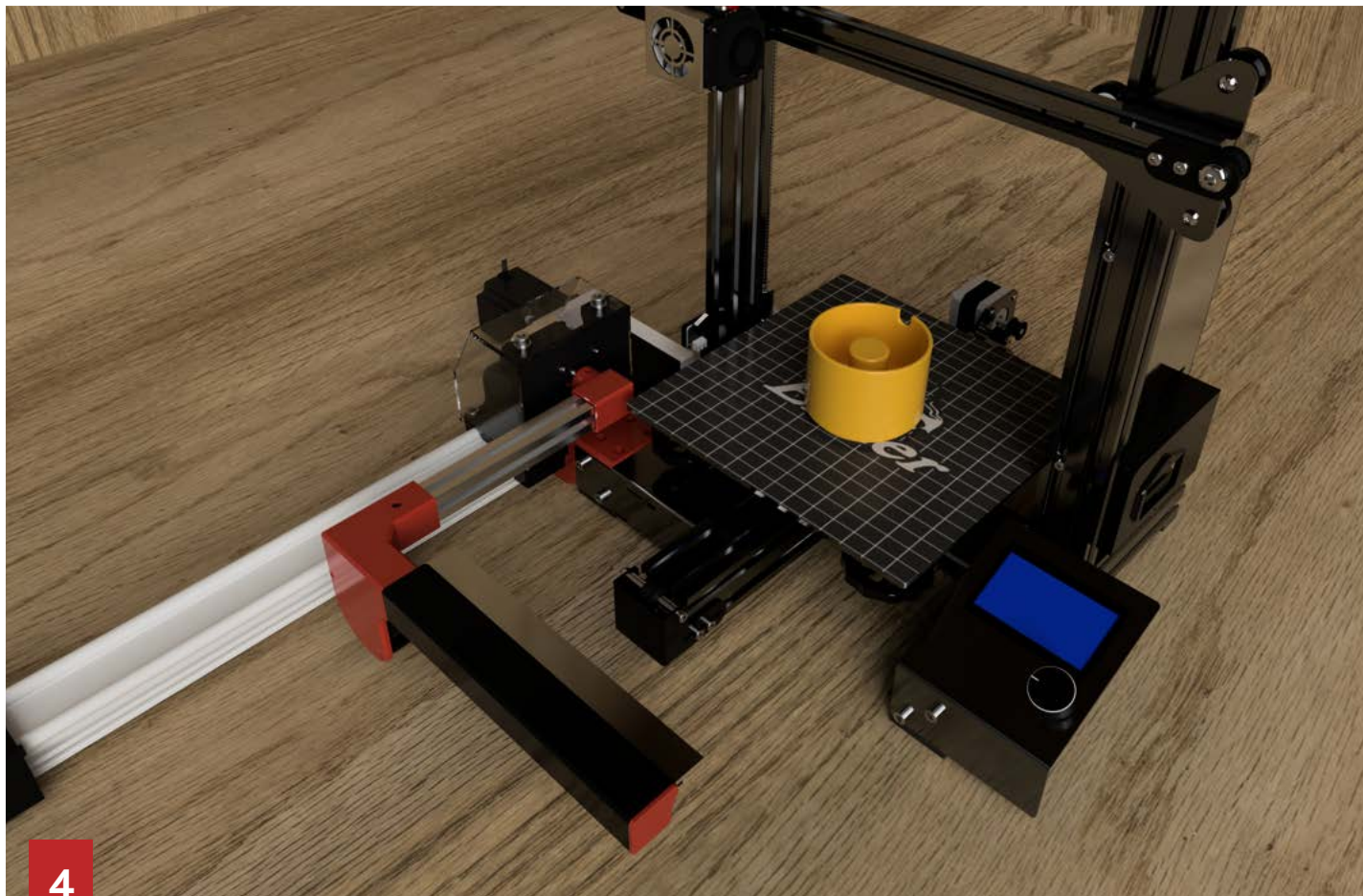
38 TROUBLESHOOTING



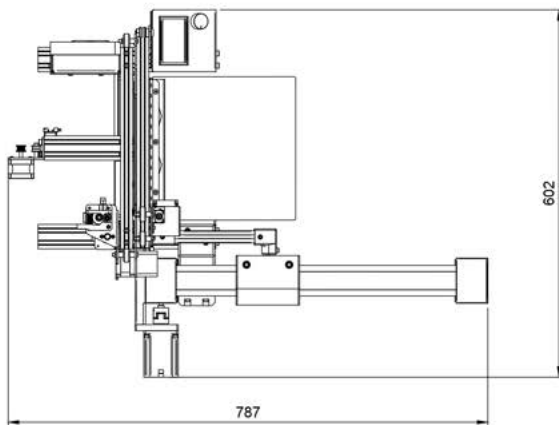
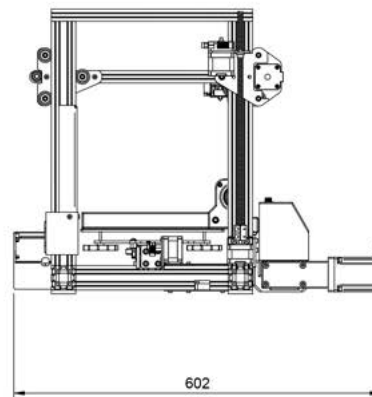
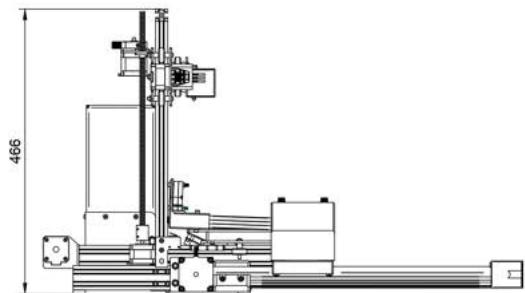
INTRODUCTION



In association with Creality and IGUS, 3D APR is a system which allows for hands-free extraction of a printed piece, both for safety and continuous production reasons.



PRODUCT OVERVIEW



General Description

Assembly of 3D APR, IGUS DLE and Creality Ender 3 Pro
Includes all necessary components (aside from 3D Printed parts)
3D Printed parts in ABS Plastic

Technical Specifications

General Dimensions: 466x787x602 [mm]

Weight: 10.3 [kg]

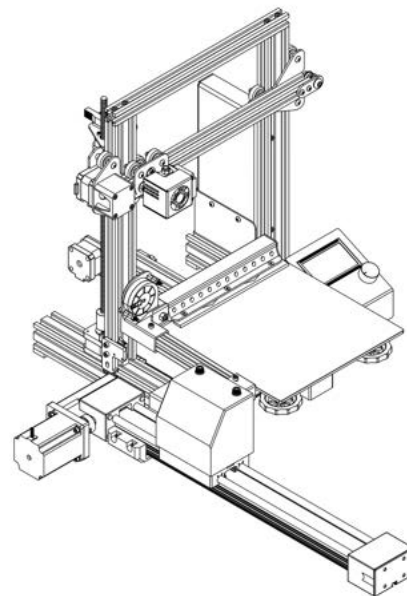
Stepper Motor Torque: 0.53 [Nmm]

Stepper Motor Power: 0.2 [W]

5015 Fan Airflow: 8.5 [L/s]

Input Voltage: 220 [V]

Linear Actuator Model: IGUS DLE-FG-0003



Maintenance

Clean all components with a soft rag with no abrasives or solvents

European Legislation

CE

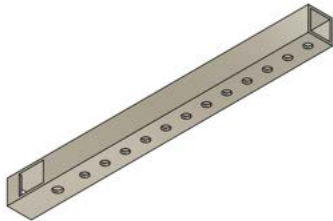


85/374/CEE

2004/48/CE

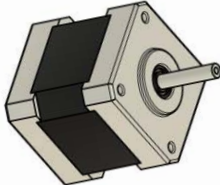

UNE-EN- ISO/ASTM 17296-3:2017

PACKAGE LIST












Structural Components

		
Square Aluminum Tube	2020 Extrusion	Scraper x3

Electronic Components

	
LongRunner Stepper Motor Nema17	5015 Spiral Fan

Fasteners

 <p>M3x7 DIN912 x4pcs</p>	 <p>M4x10 DIN912 x8pcs</p>	 <p>USB Drive x1pcs</p>
 <p>M4x5 DIN7991 x3pcs</p>	 <p>M4x16 DIN912 x4pcs</p>	
 <p>M4x30 DIN912 x2pcs</p>		
 <p>M6x16 DIN912 x4pcs</p>	 <p>M4 T-Nut x6pcs</p>	
 <p>M6x30 DIN912 x5pcs</p>		
 <p>M4 Hex Nut x2pcs</p>	 <p>M6 Hex Nut x3pcs</p>	

Other Components



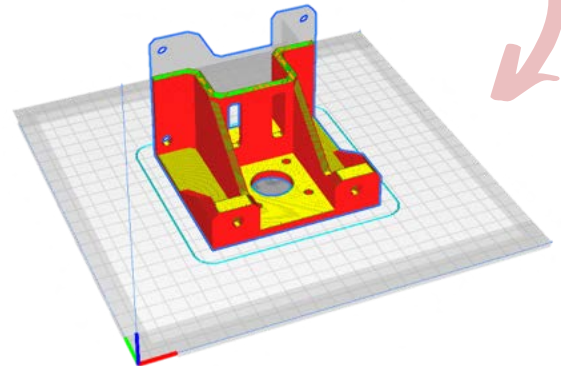
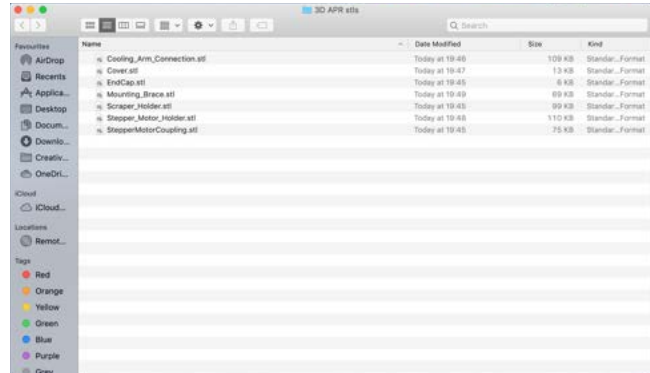
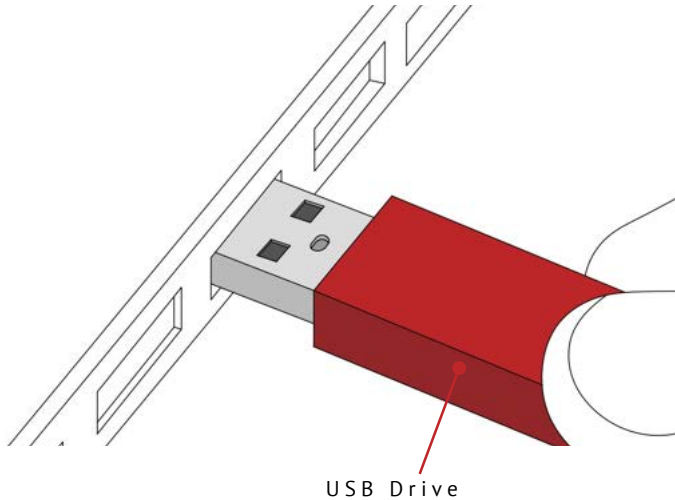
IGUS DLE-FG-0003



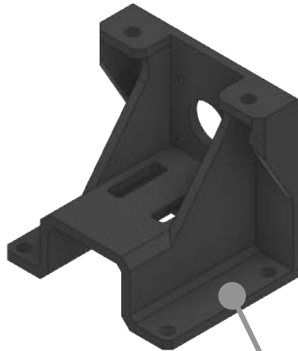
Crealty Ender 3 Pro

ASSEMBLY

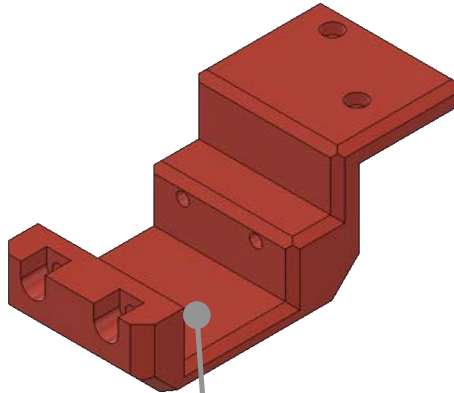
3D print all the included files (found in the included USB Drive) in ABS Plastic with the Creality Ender 3 Pro



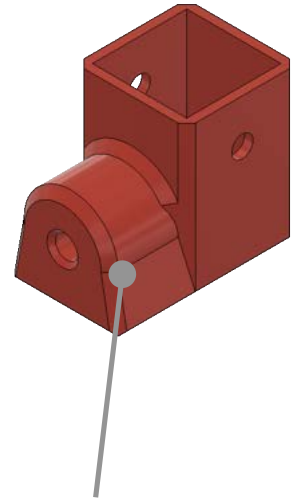
Parts that need to be 3D printed:



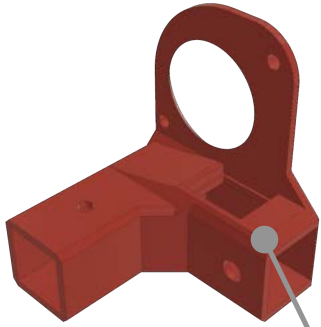
Stepper Motor
Holder



Mounting
Brace



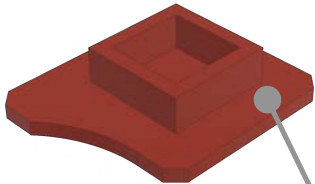
Stepper Motor
Coupling



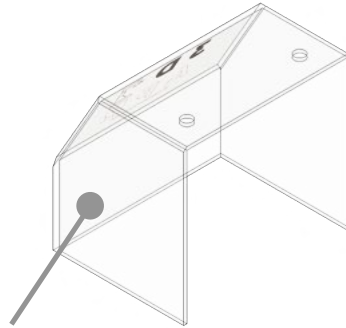
Cooling Arm
Connection



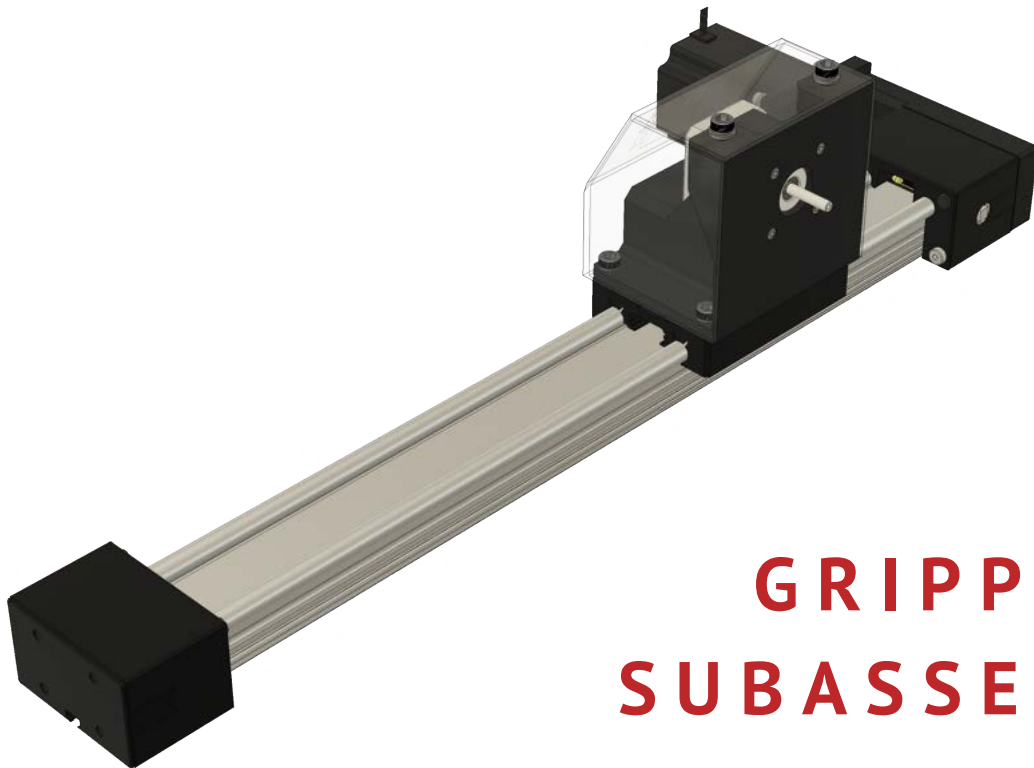
Scraper Holder



End Cap

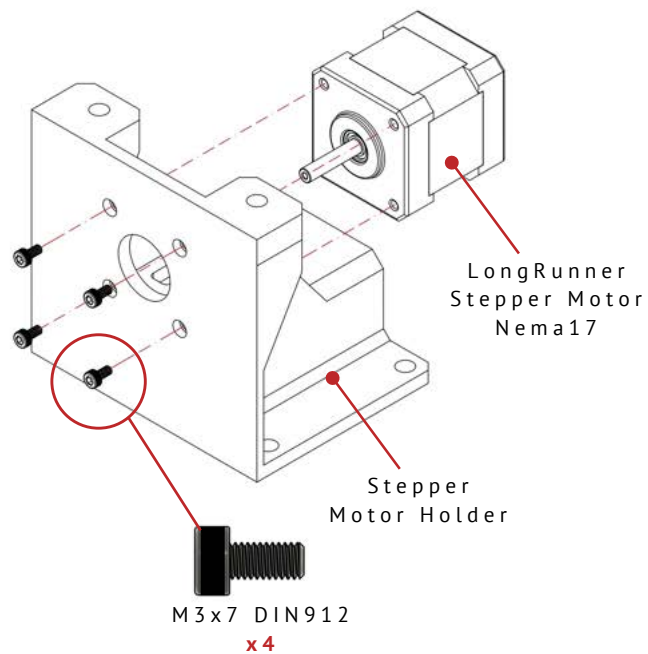


Cover

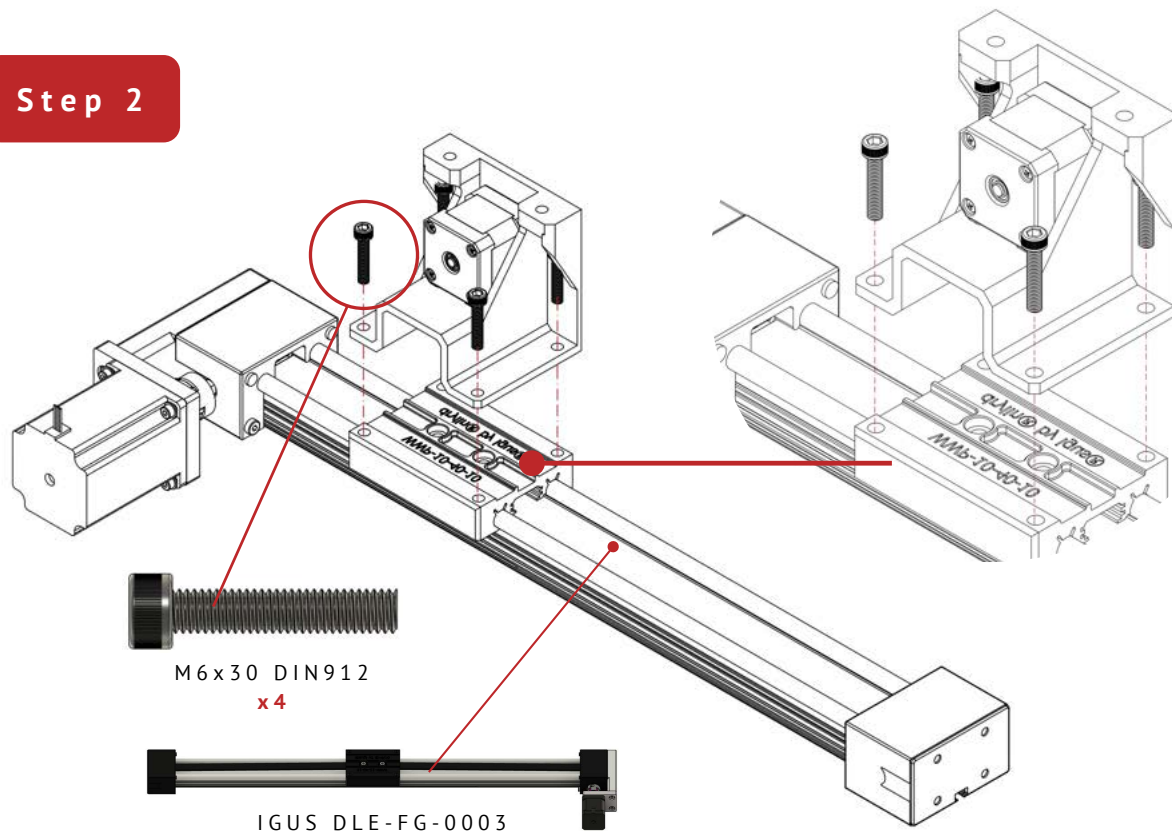


**GRIPPER
SUBASSEMBLY**

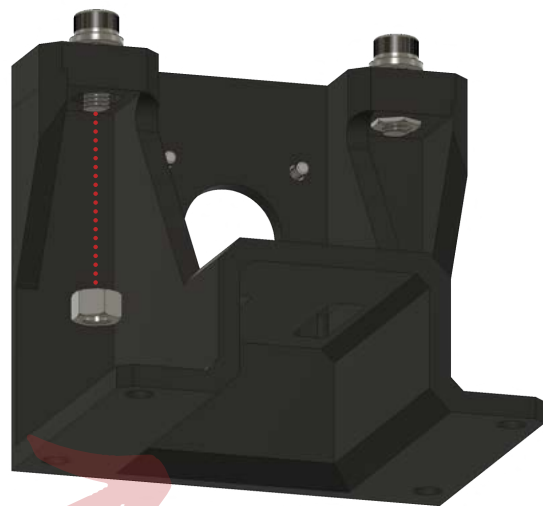
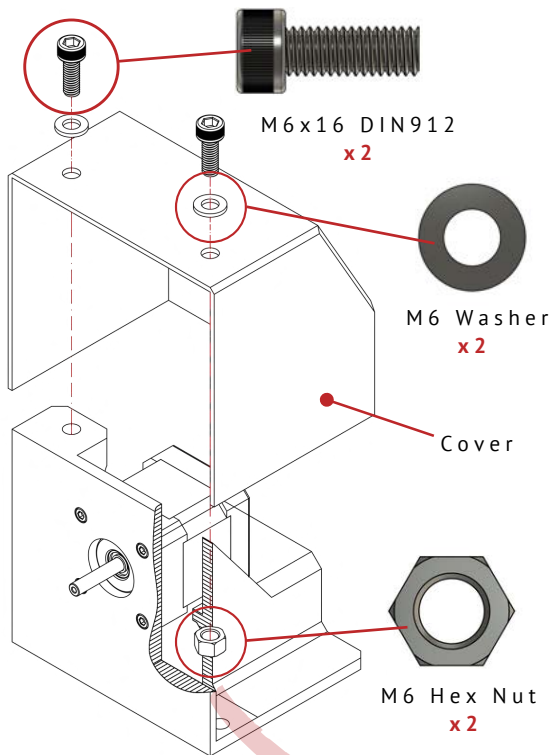
Step 1

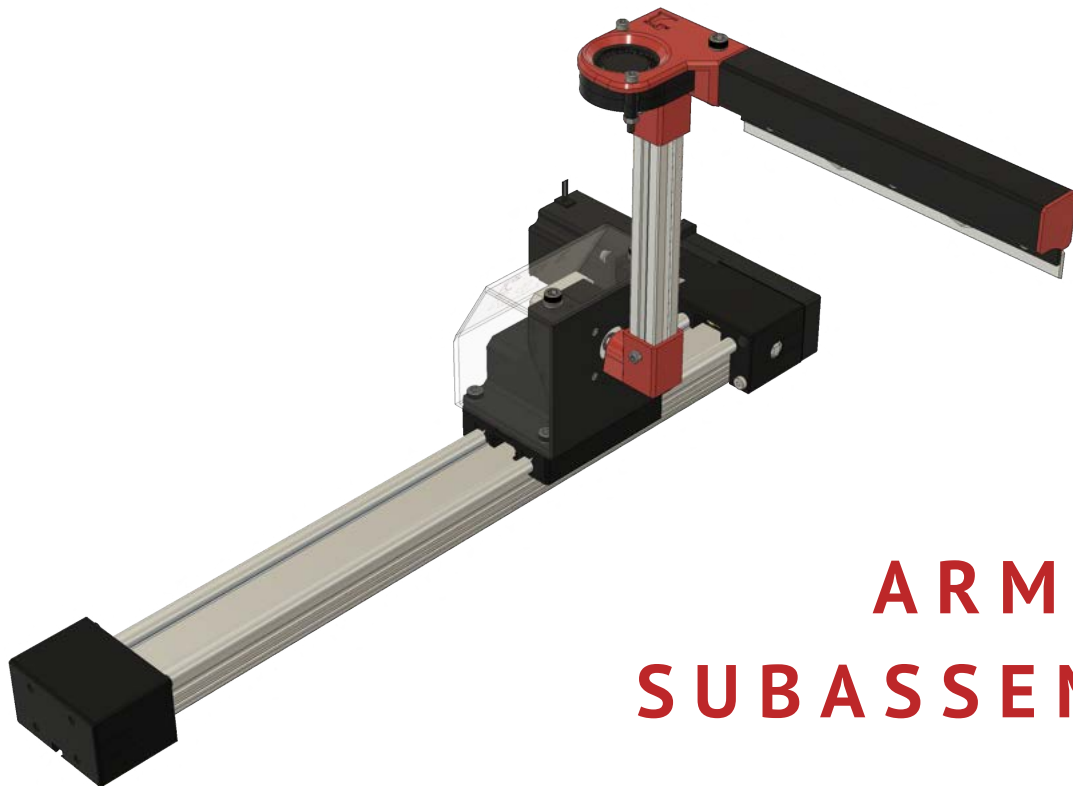


Step 2



Step 3

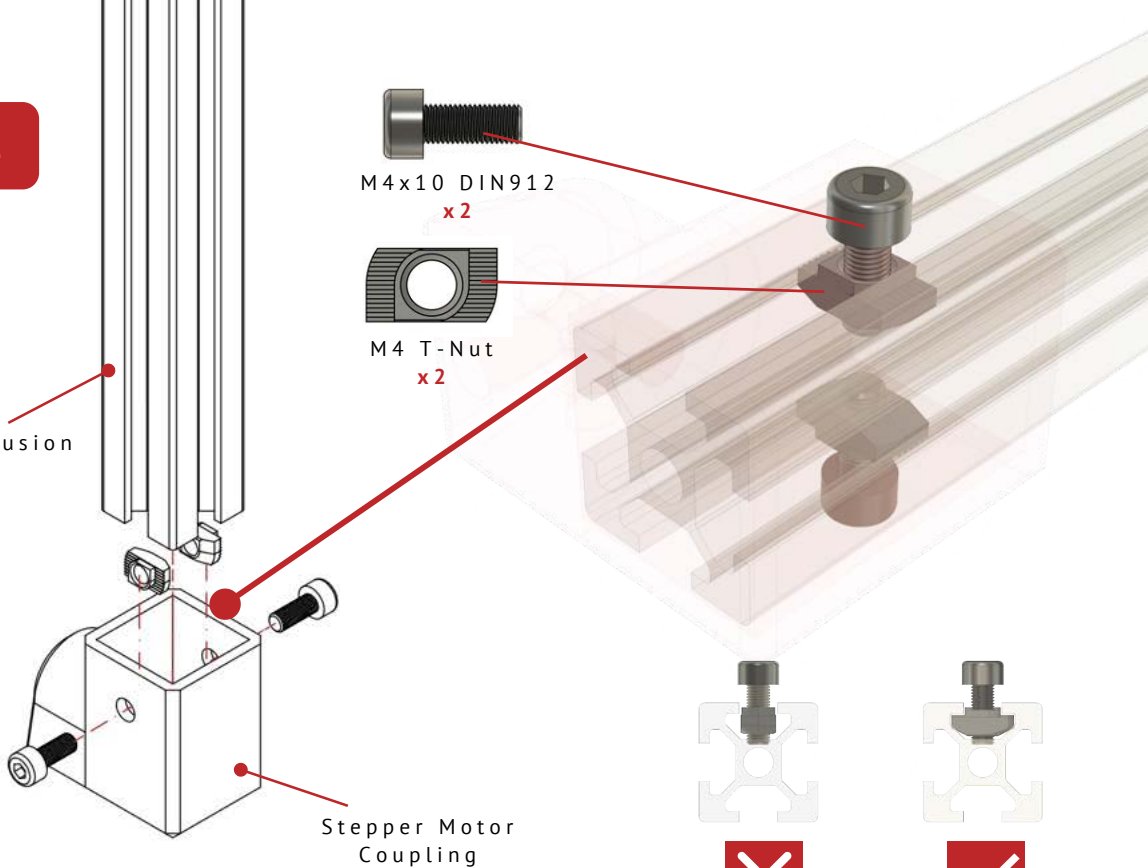




**ARM
SUBASSEMBLY**

Step 1

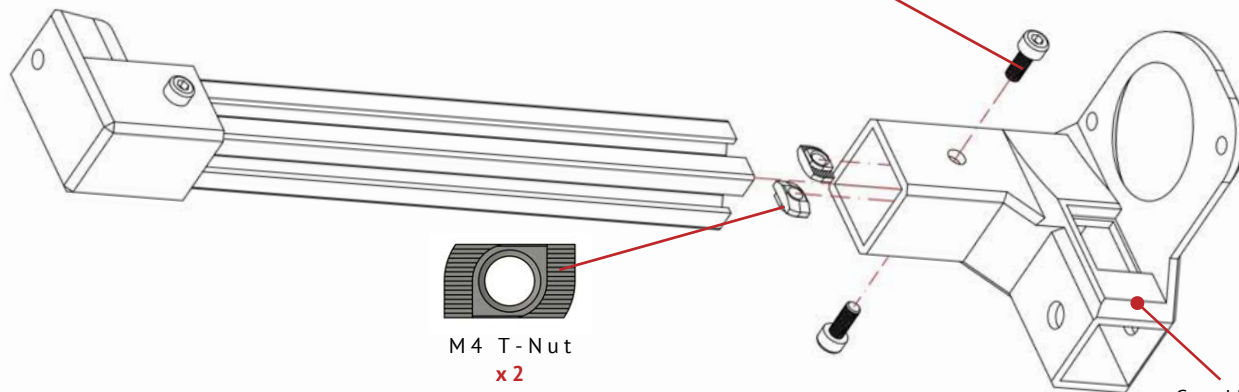
2020 Extrusion



Step 2

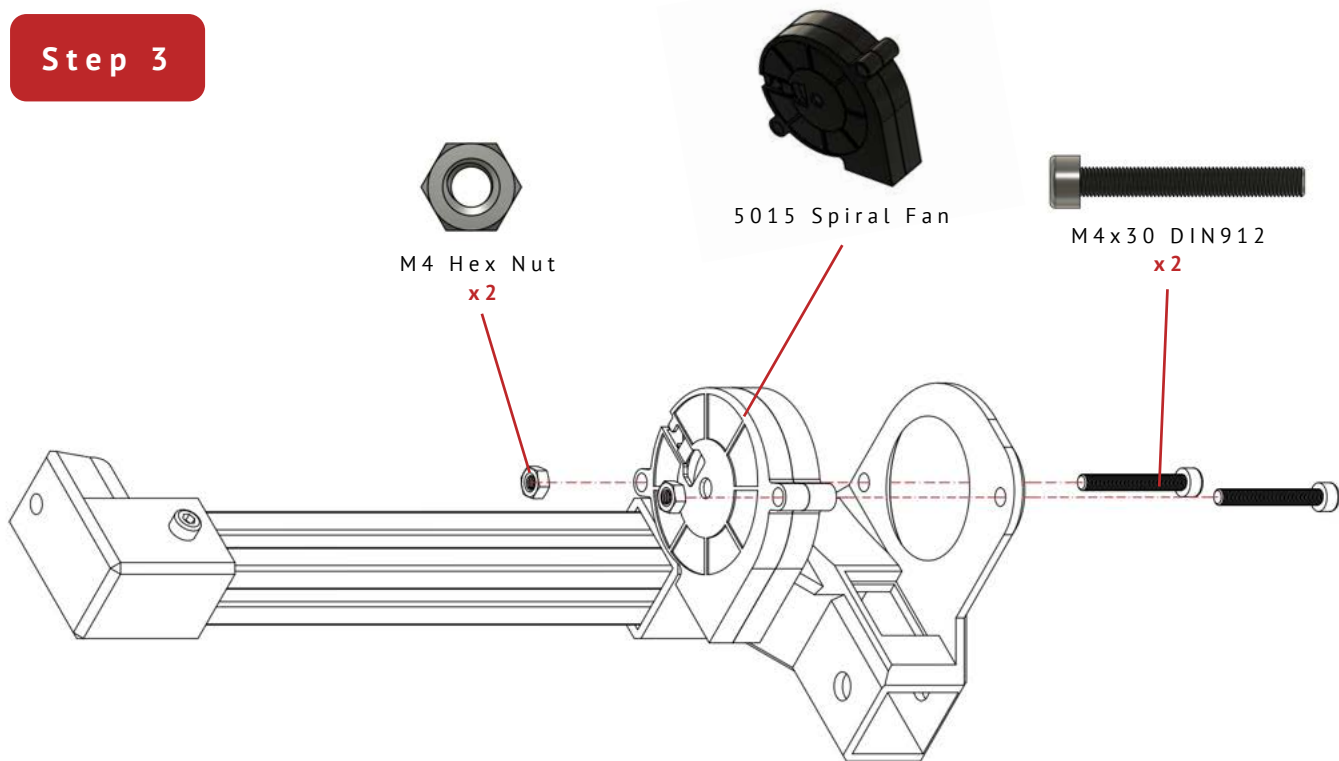
M4x10 DIN912
x 2

M4 T-Nut
x 2

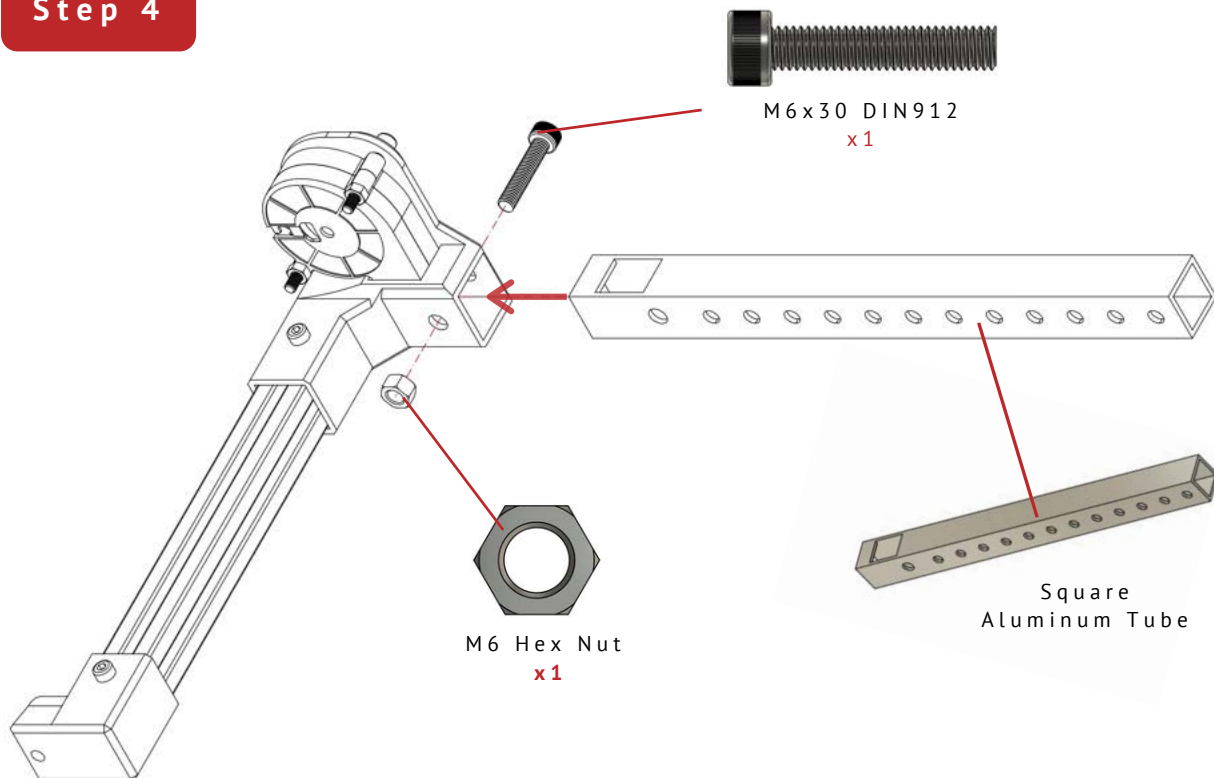


Cooling Arm
Connection

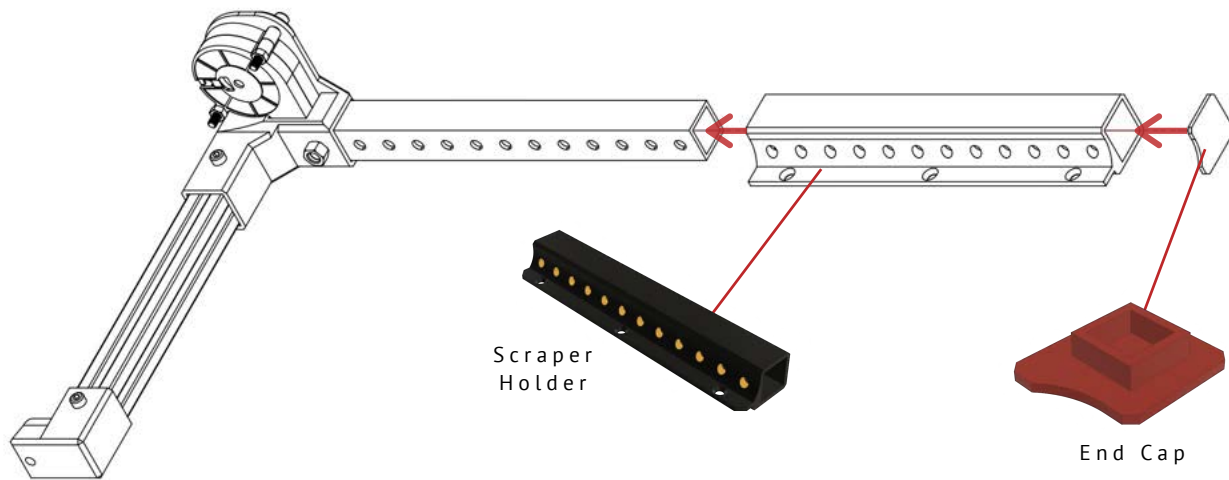
Step 3



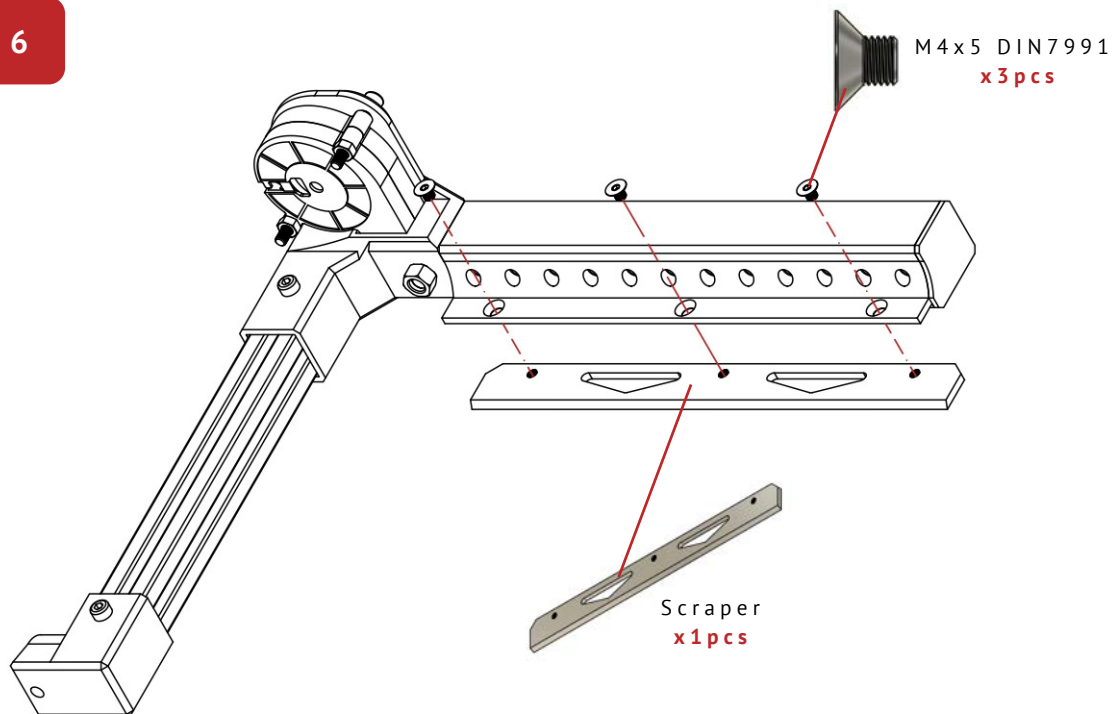
Step 4



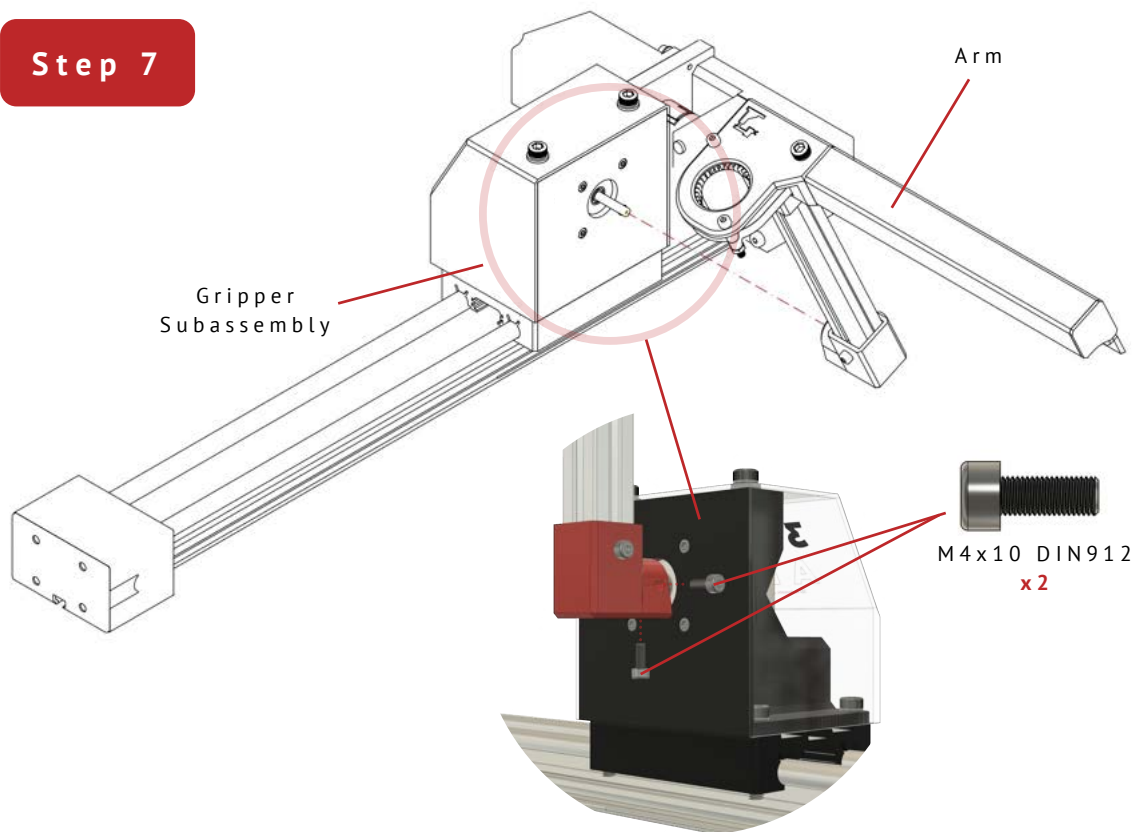
Step 5

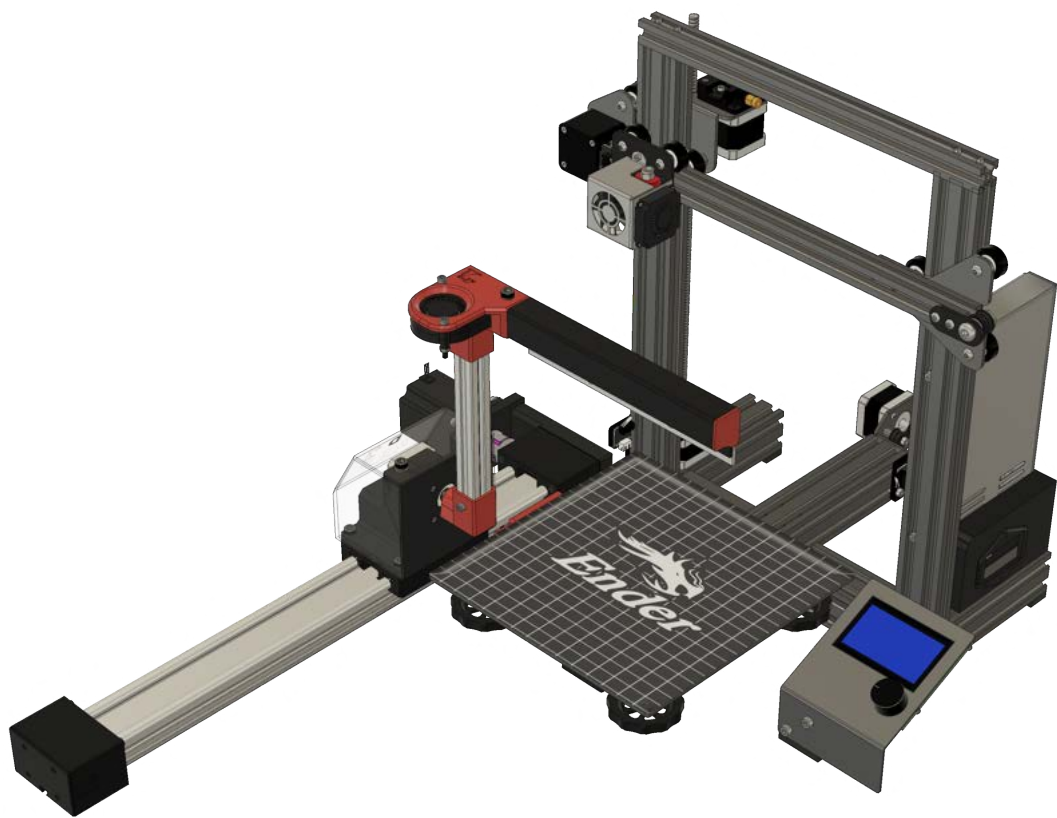


Step 6



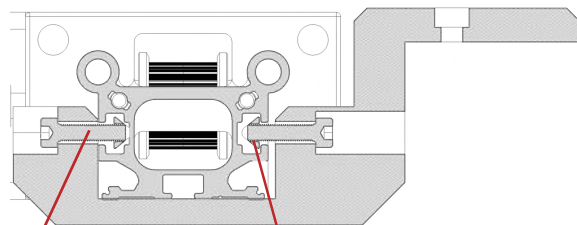
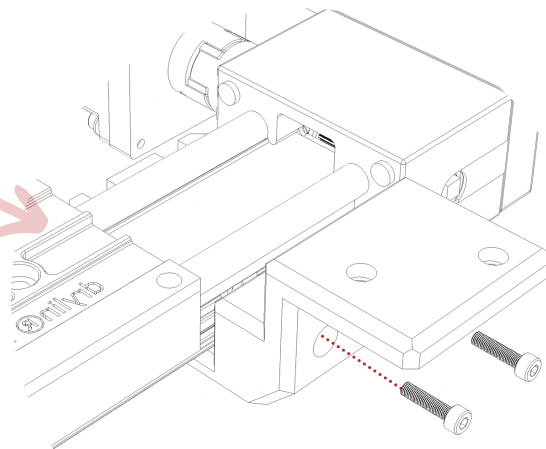
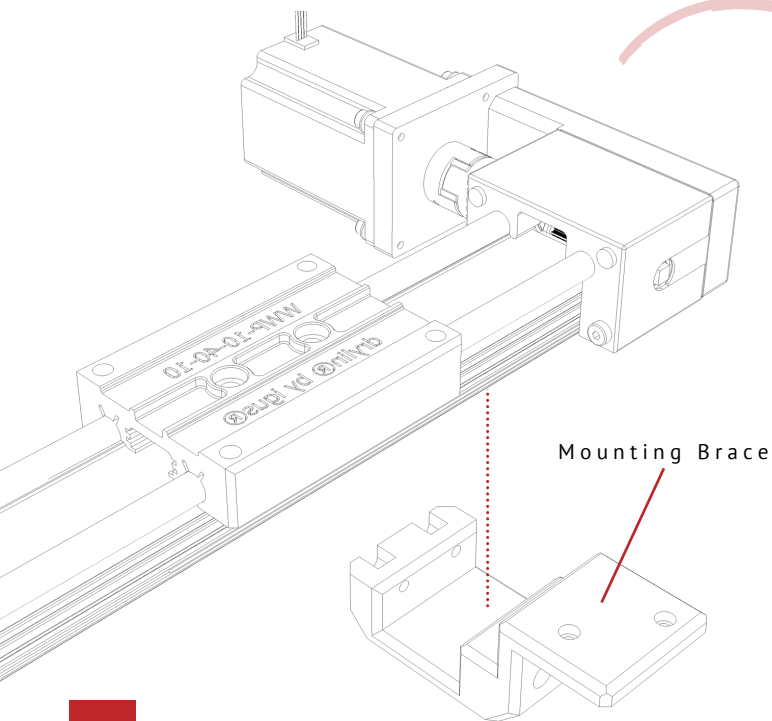
Step 7





**ENDER 3
SUBASSEMBLY**

Step 1



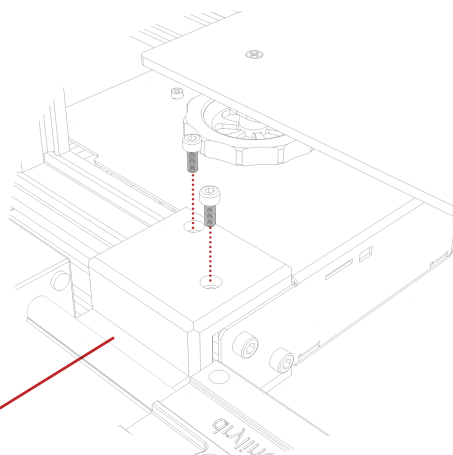
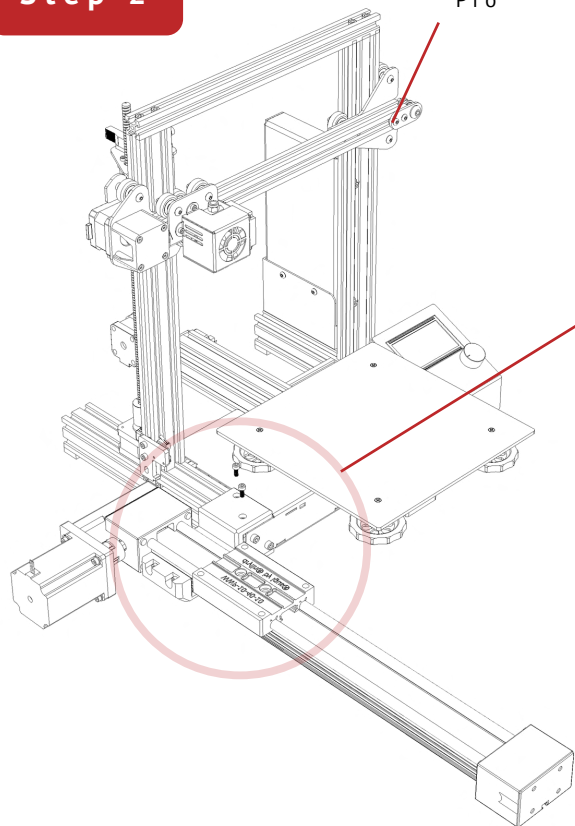
M4x16 DIN912
x4



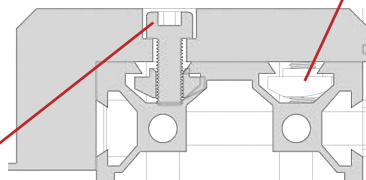
M4 T-Nut
x4

Step 2

Creativity Ender 3
Pro



M4 T-Nut
x 2

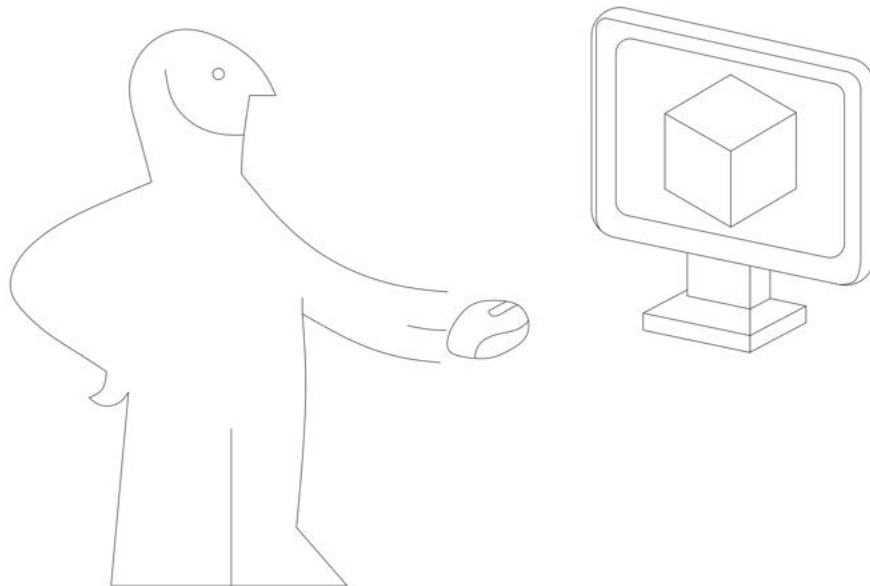


M4x10 DIN912
x 2



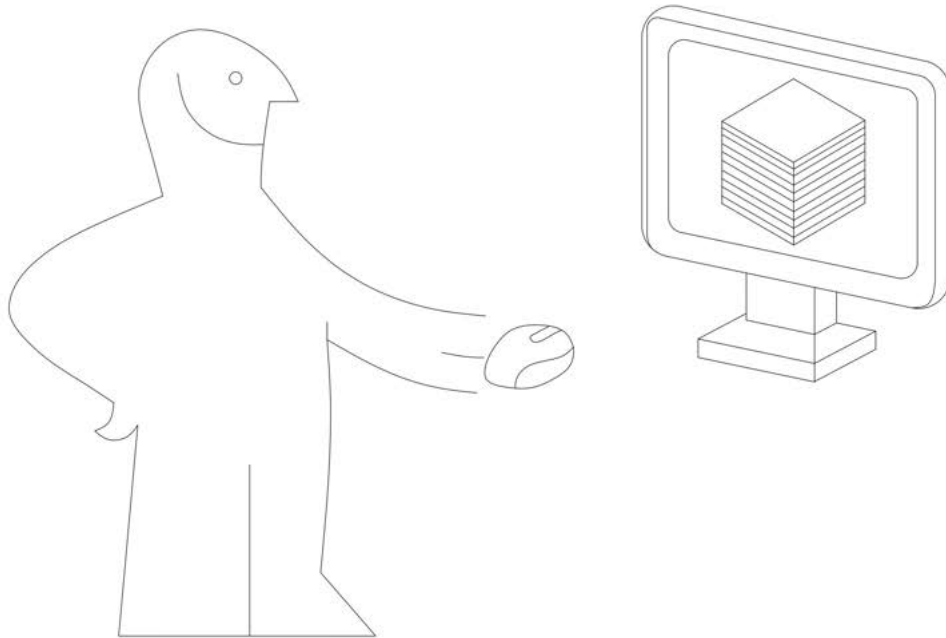
OPERATION

Step 1



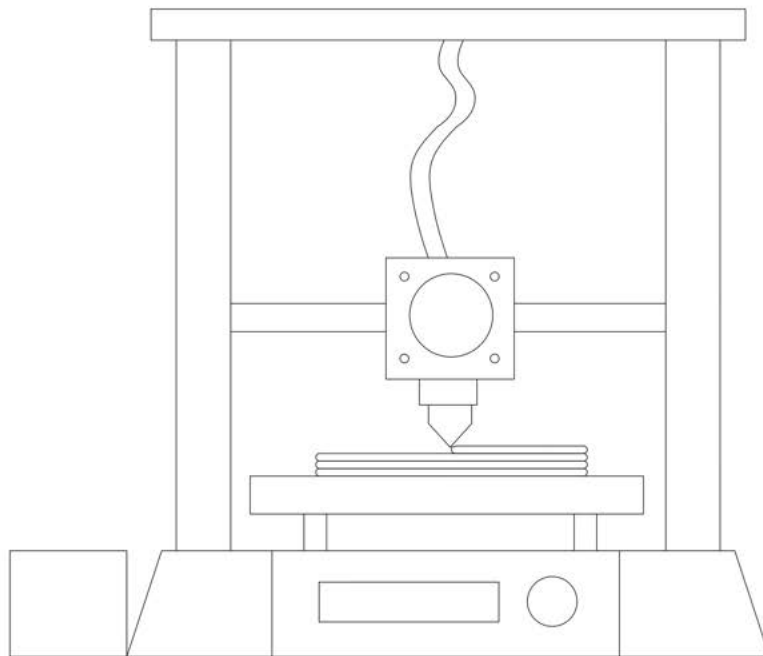
Design your piece in your preferred CAD software

Step 2



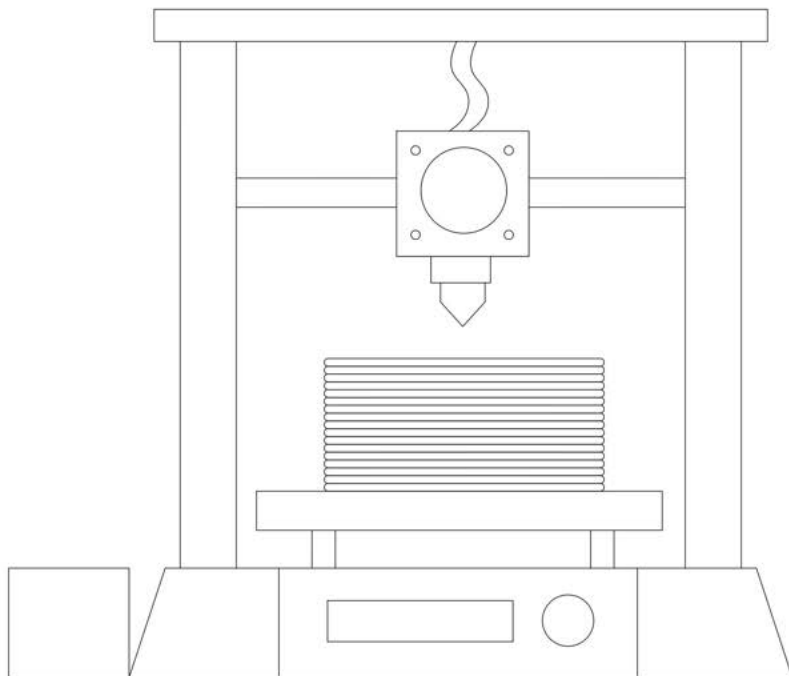
Slice the designed part using your preferred slicing software

Step 3



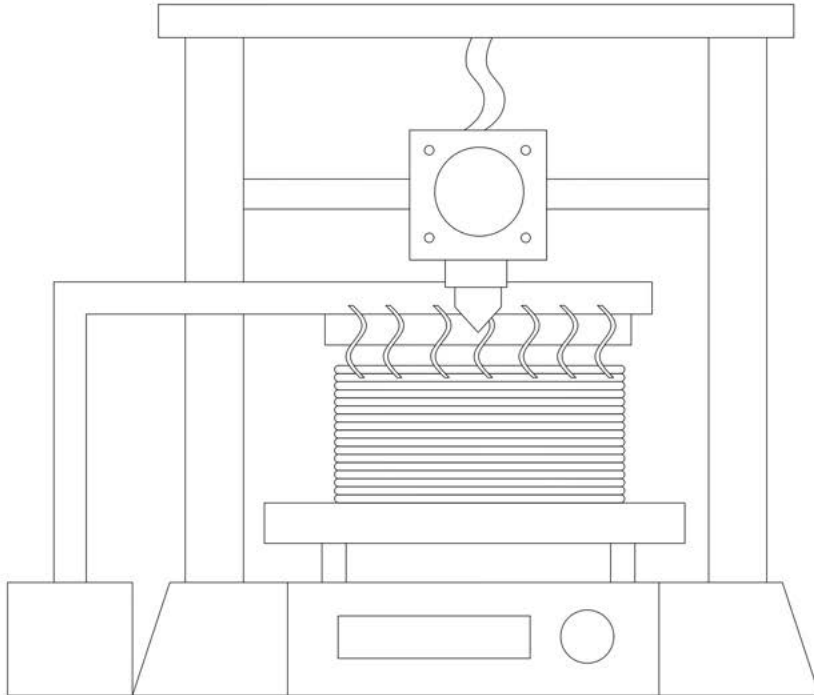
Start 3D Print using Creality Ender 3 Pro 3D Printer

Step 4



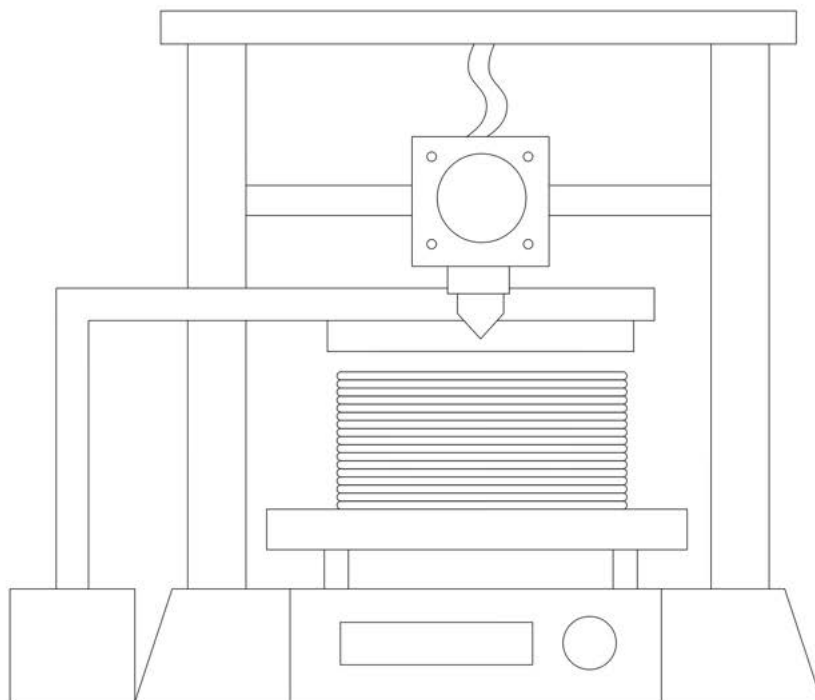
Wait for print to finish

Step 5



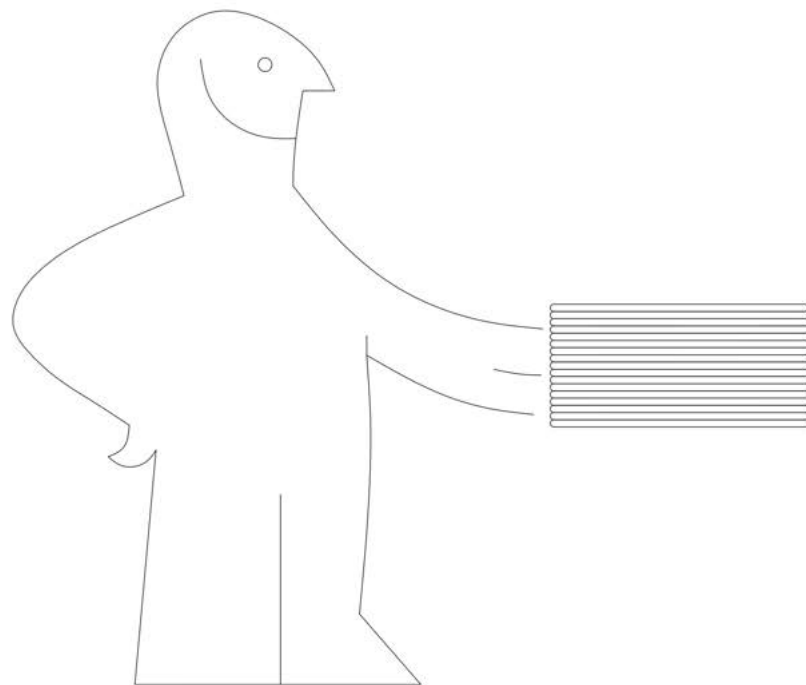
3D APR will commence the cooling process by activating the 5015 Spiral Fan and performing 3 cycles

Step 6



The piece is extracted using the linear movement of the actuator

Step 7

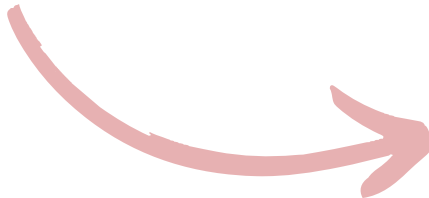


Pick-up the extracted piece

COMPANION APP

This companion app tells the user how much time is left before the print taking place finishes and the amount of prints it has already done.

Download the app now!



Step 1



Create a username and a password

Step 2



Enter and set-up your 3D Printer(s)

TROUBLESHOOTING

Q&A support team is on standby and ready to help you with any problems you may have with your 3D APR kit. If the issues or questions are not covered in this User Manual, you can seek for solutions on our official website or contact us via email.

The Q&A support team can be reached by e-mail between the hours of 8:00 a.m. to 5:00 p.m. (PST) Monday through Saturday. In case you contact us during off-duty time, your inquiry will be answered the following business day.

Official Website: www.q&a.com

Email: support@q&a.com

ADD: ELISAVA, La Rambla, 30, 32, 08002 Barcelona

Find Us Socially:

Facebook (@3DAPR)

Instagram (@3DAPR)

Twitter (@3D_APR)

When contacting support, please have your serial number ready.