



- [Enlarge image](#)
- [Enlarge image](#)

**Very compact 13 mm (0.5") ferro-fluid cooled tweeter** with a polycarbonat [cone](#), featuring an absolutely linear [frequency response](#). Crisp high-range reproduction and excellent omnidirectional [sound](#) distribution. Tweeter in low to medium-output 2- or 3-way systems or as an additional tweeter. Can be surface or flush mounted. Especially suitable for mounting in confined spaces (e.g. mirror vicinity and door handles).

Accessories: Mounting ring and connecting cables included

## Technical Data

**Nominal power handling with high pass** 60 W (12 dB/Okt.; 6000 Hz)

**Peak power handling with high pass** 100 W (12 dB/Okt.; 6000 Hz)

**Nominal impedance Z** 4 Ohm

**Frequency response** 1700. 22000 Hz

**Mean sound pressure level** 86 dB (1 W/1 m)

**Opening angle (-6 dB)** 180°/8000 Hz

**Resonance frequency fs** 2400 Hz

**Magnetic induction** 0,8 T

**Magnetic flux** 65 µWb

**Voice coil diameter** 13 mm

**Height of winding** 1,5 mm

**Cutout diameter** 33,5 mm

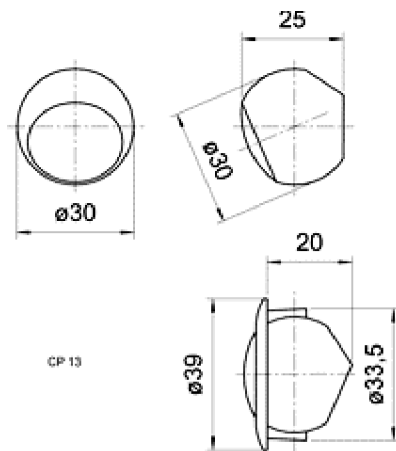
**Net weight** 0,033 kg

**D.C. resistance R<sub>dc</sub>** 3,3 Ohm

**Inductance of the voice coil L** 0,4 mH

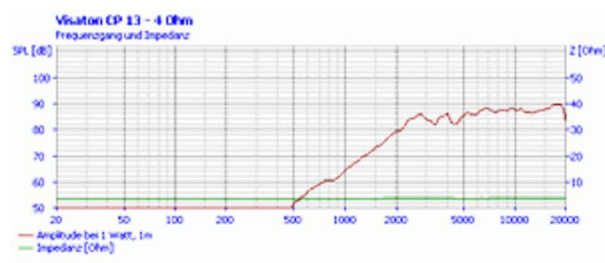
Hide data

## sketch



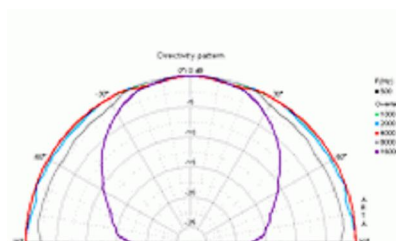
[Enlarge image](#)

## frequency- and impedance response



[Enlarge image](#)

## directivity pattern



[Enlarge image](#)

- [Any questions?](#)